



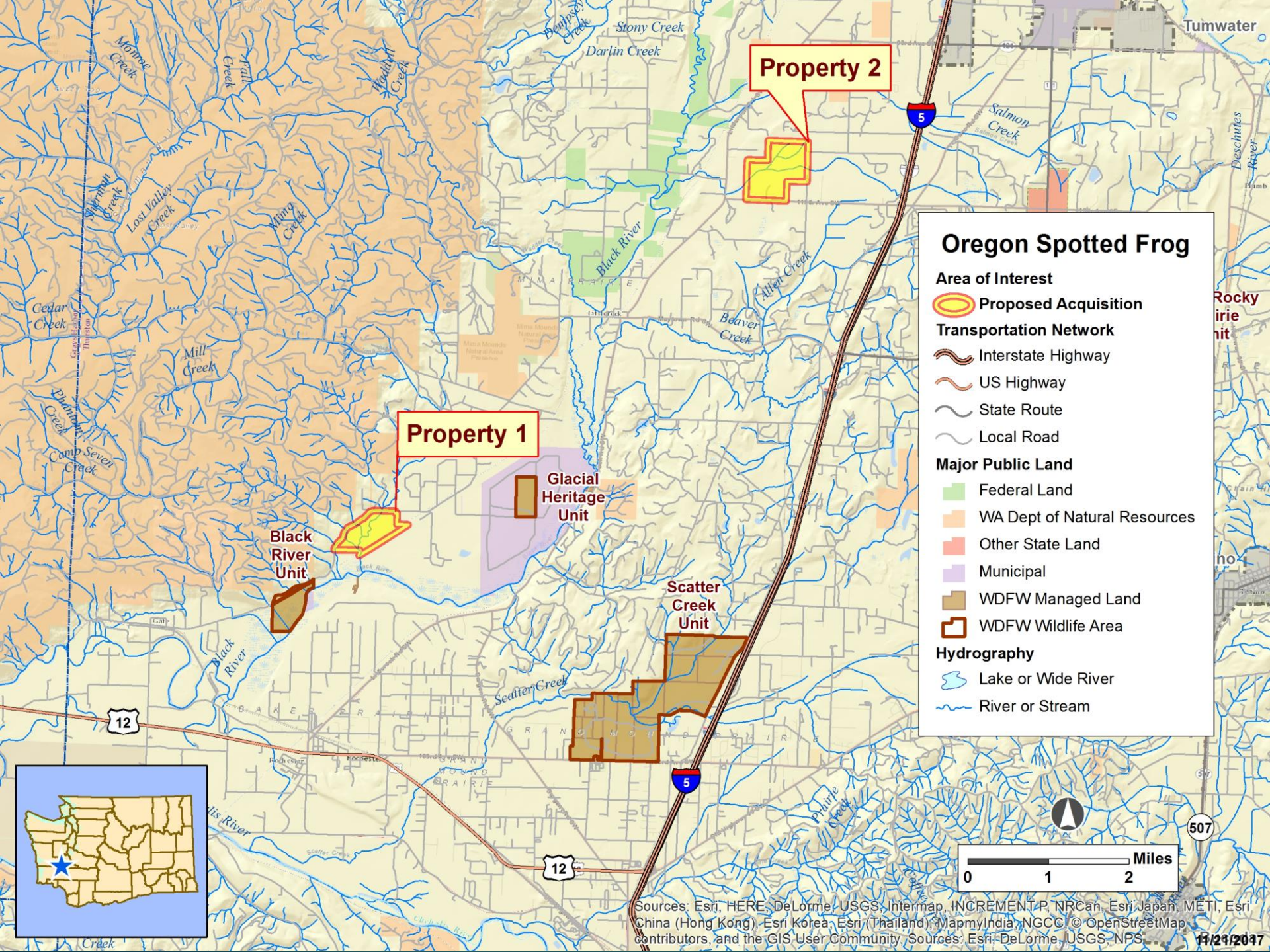
# Oregon Spotted Frog – 248 Acres Thurston County

**Description:** These parcels add to a current pass-through project and protect habitat for Oregon Spotted Frog. Part conservation easement, part fee title purchase (property rights to be held by a partner organization).

**Species/Habitat Benefits:** Oregon spotted frog, overall pass-through project protects 95% of unprotected privately owned Oregon spotted frog egg-laying habitat in South Puget Sound and is part of South Puget Sound Working Lands for Wildlife collaborative landscape conservation effort.

**Additional Project Benefits:** Allows continued on-going compatible working land practices.

**Support:** Capital Land Trust, South of the Sound Community Farm Land Trust, JBLM, Northwest Trek, Point Defiance Zoo & Aquarium, NW Zoo & Aquarium Alliance, Center for Natural Lands Management, Mountain View Conservation & Breeding Centre, Port Blakeley Tree Farms, Washington Department of Natural Resources.



### Oregon Spotted Frog

**Area of Interest**

- Proposed Acquisition

**Transportation Network**

- Interstate Highway
- US Highway
- State Route
- Local Road

**Major Public Land**

- Federal Land
- WA Dept of Natural Resources
- Other State Land
- Municipal
- WDFW Managed Land
- WDFW Wildlife Area

**Hydrography**

- Lake or Wide River
- River or Stream

Property 2

Property 1

Black River Unit

Glacial Heritage Unit

Scatter Creek Unit

