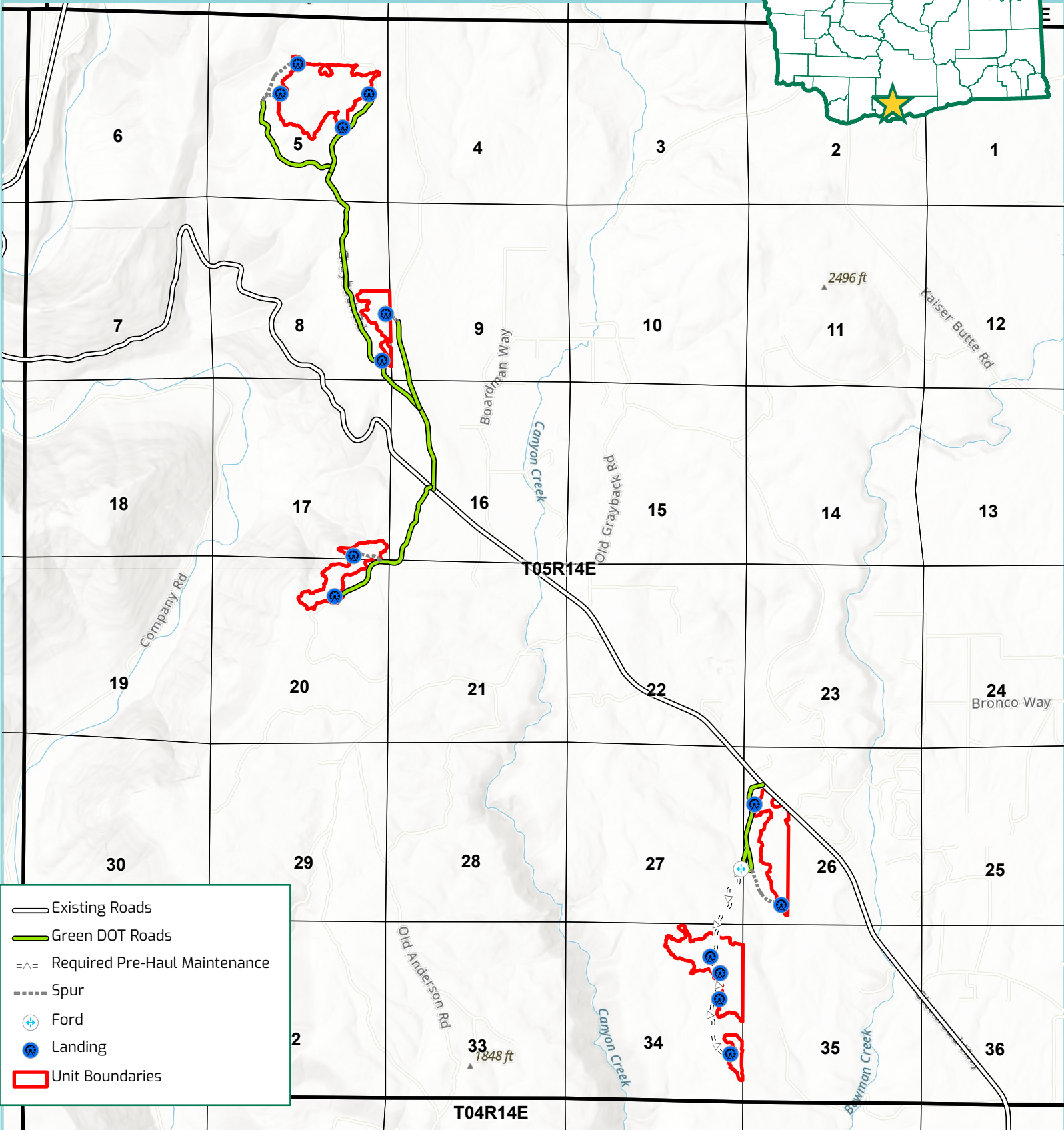
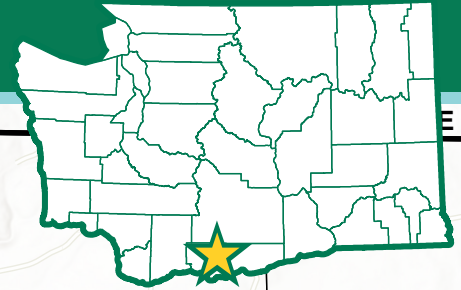


# Soda Springs Phase 2

Klickitat County

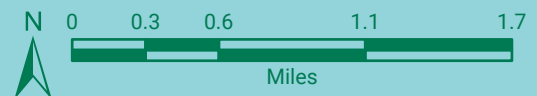
SEPA



- Existing Roads
- Green DOT Roads
- Required Pre-Haul Maintenance
- Spur
- Ford
- Landing
- Unit Boundaries



Department of Fish and Wildlife



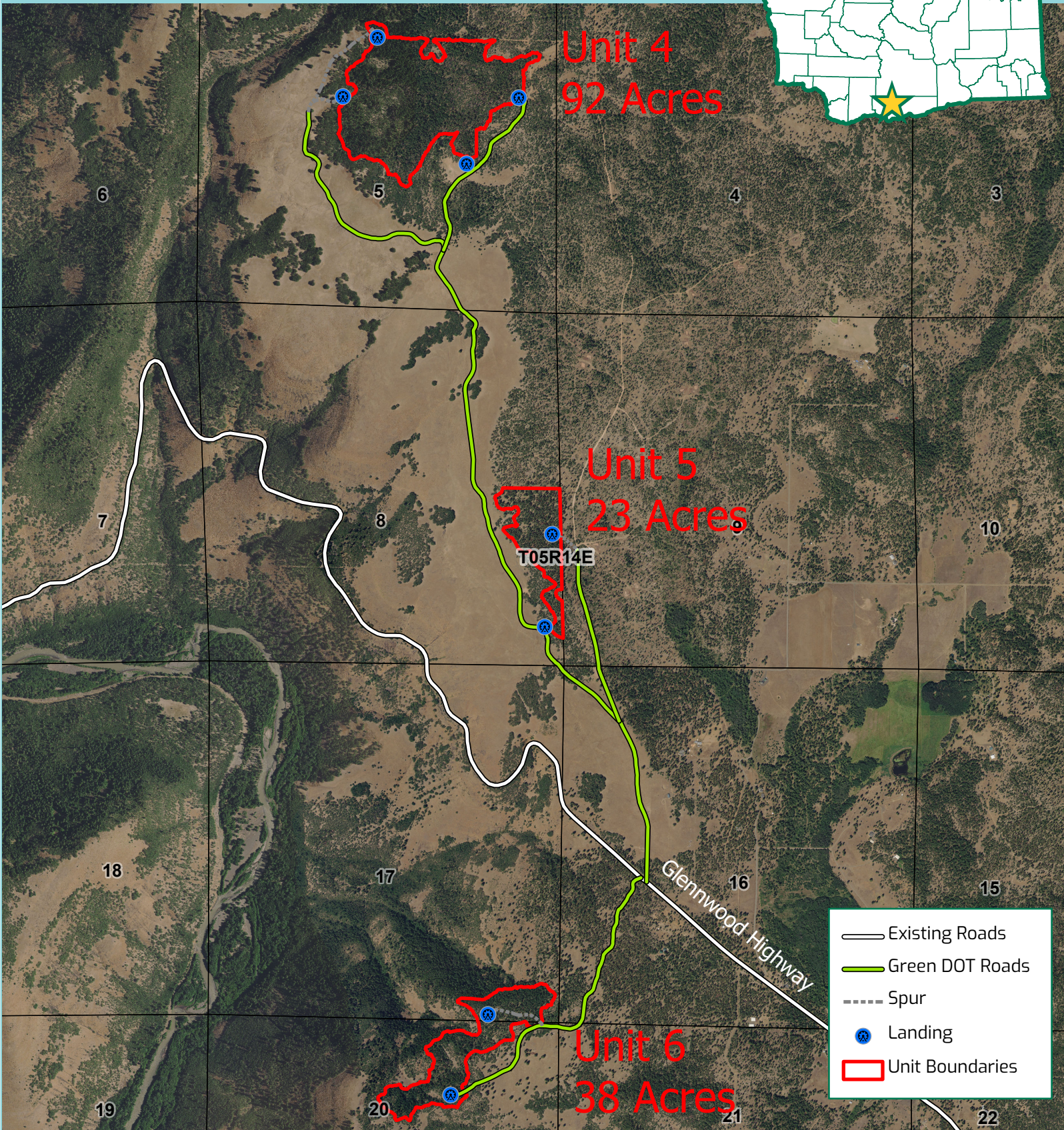
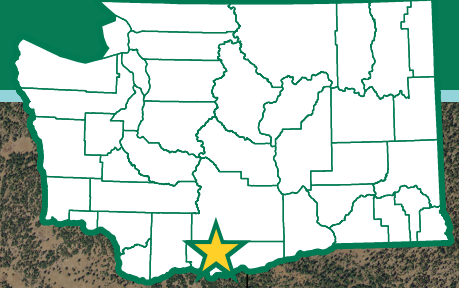
This product is for informational purposes and may not have been prepared for or be suitable for legal, engineering, or surveying purposes. It does not represent an on-the-ground survey and represents only the approximate relative location of property boundaries.



# Soda Springs Phase 2

Klickitat County

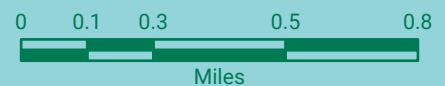
SEPA



- Existing Roads
- Green DOT Roads
- Spur
- Landing
- Unit Boundaries



Department of Fish and Wildlife



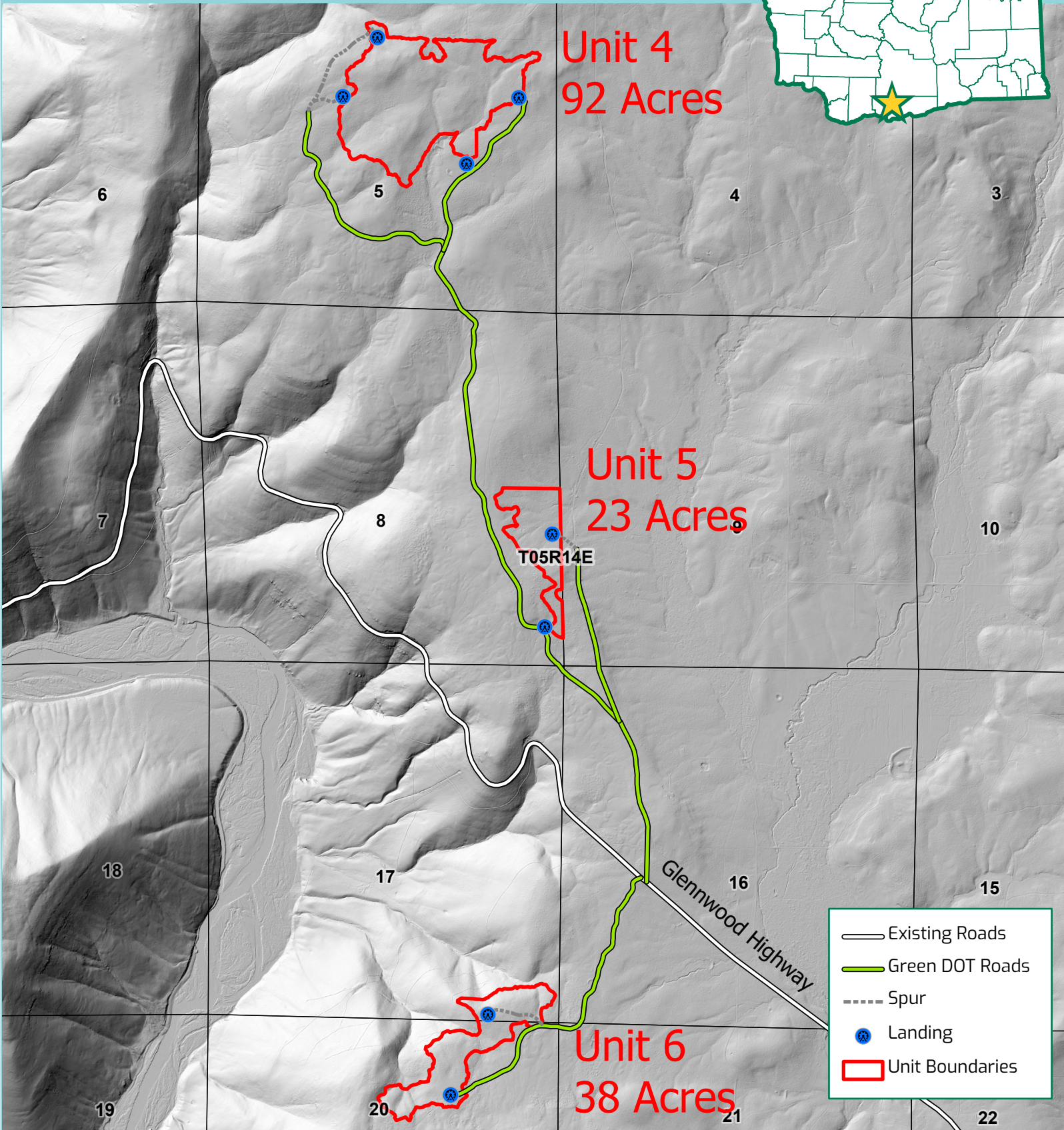
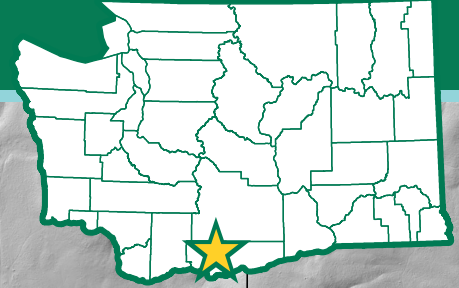
This product is for informational purposes and may not have been prepared for or be suitable for legal, engineering, or surveying purposes. It does not represent an on-the-ground survey and represents only the approximate relative location of property boundaries.



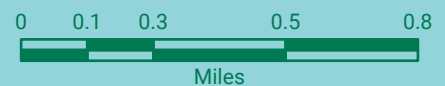
# Soda Springs Phase 2

Klickitat County

SEPA



Department of Fish and Wildlife



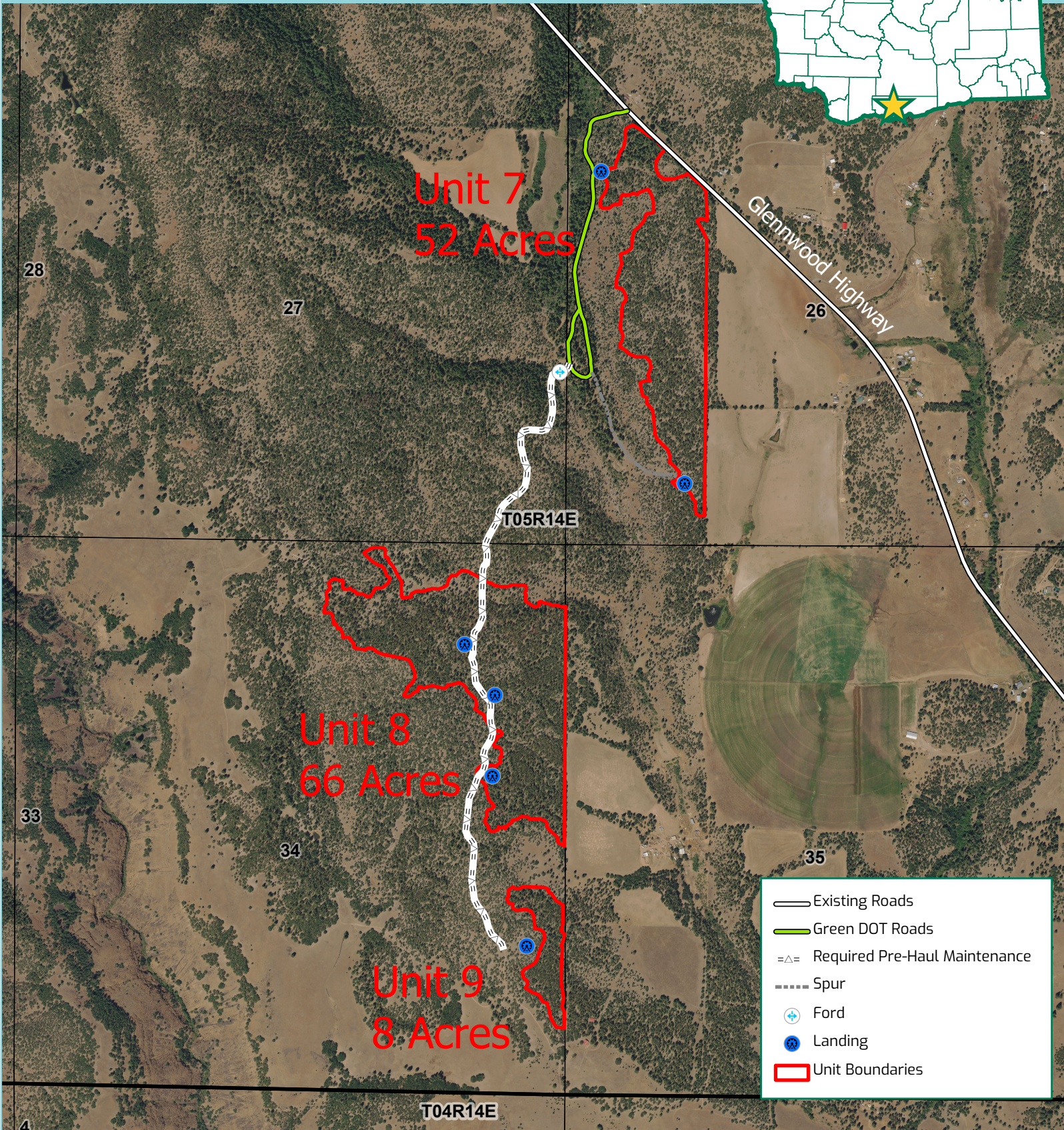
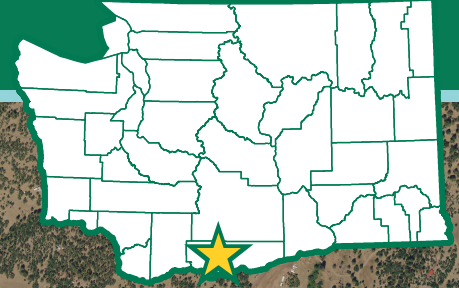
This product is for informational purposes and may not have been prepared for or be suitable for legal, engineering, or surveying purposes. It does not represent an on-the-ground survey and represents only the approximate relative location of property boundaries.



# Soda Springs Phase 2

Klickitat County

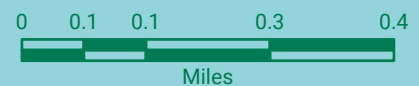
SEPA



- Existing Roads
- Green DOT Roads
- Required Pre-Haul Maintenance
- Spur
- Ford
- Landing
- Unit Boundaries



Department of Fish and Wildlife



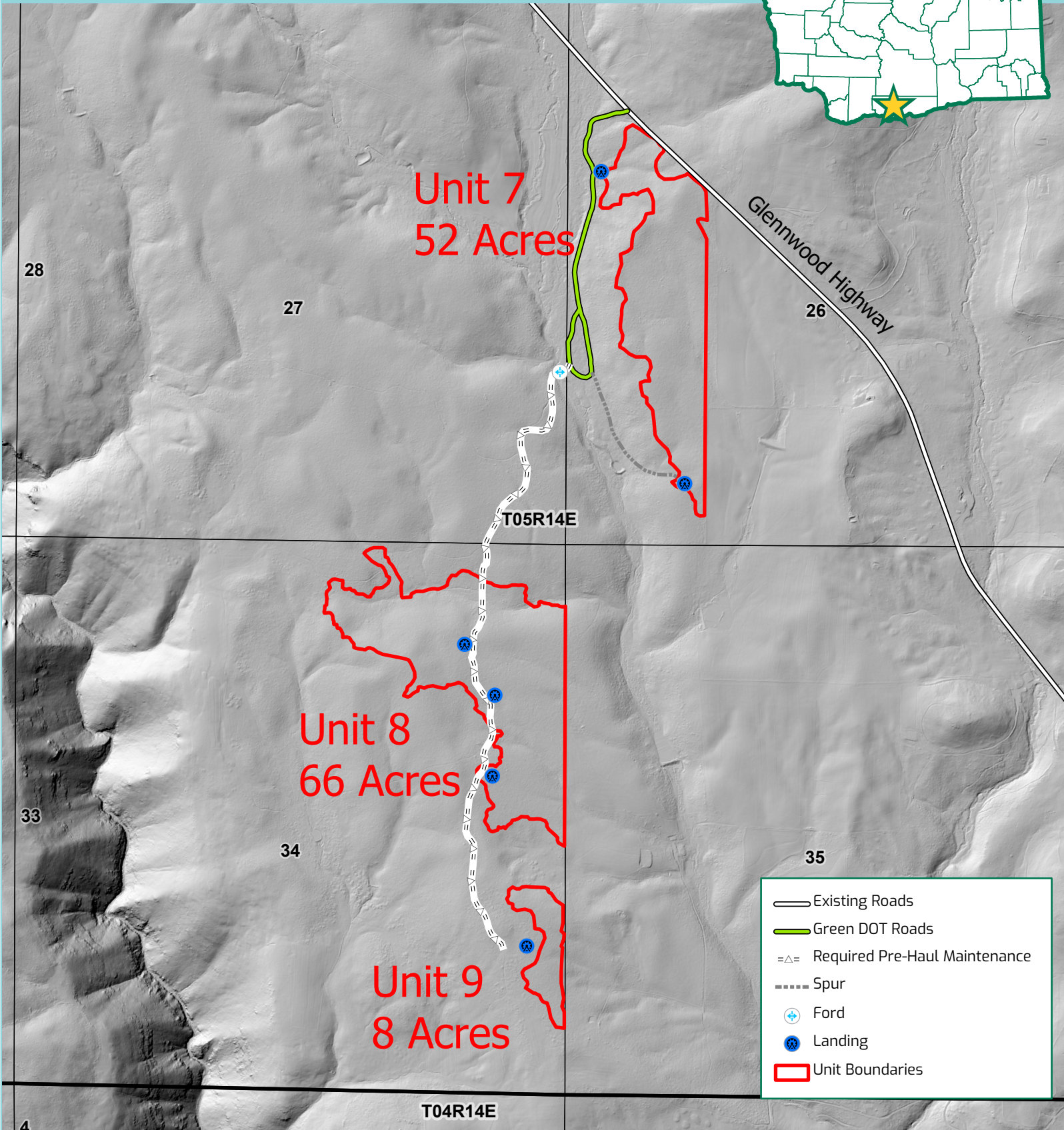
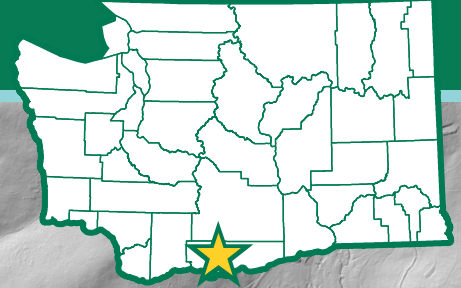
This product is for informational purposes and may not have been prepared for or be suitable for legal, engineering, or surveying purposes. It does not represent an on-the-ground survey and represents only the approximate relative location of property boundaries.



# Soda Springs Phase 2

Klickitat County

SEPA



Unit 7  
52 Acres

Unit 8  
66 Acres

Unit 9  
8 Acres

Glennwood Highway

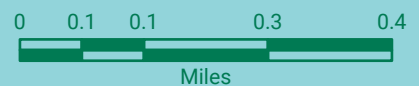
T05R14E

T04R14E

- Existing Roads
- Green DOT Roads
- =Δ= Required Pre-Haul Maintenance
- Spur
- ⊕ Ford
- ⊗ Landing
- Unit Boundaries



Department of Fish and Wildlife



This product is for informational purposes and may not have been prepared for or be suitable for legal, engineering, or surveying purposes. It does not represent an on-the-ground survey and represents only the approximate relative location of property boundaries.