

FIGURE 1: VICINITY MAP
THE GRANDE RONDE
RIVER ACCESS

APPLICANT:

WASHINGTON DEPT. of FISH & WILDLIFE
 600 CAPITOL WAY N.
 OLYMPIA, WA 98501-1091

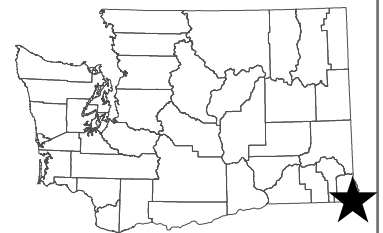
DRAWN BY: ALICIA ROSE

PROJECT LOCATION ADDRESS:

GRANDE RONDE ACCESS SITES
 GRANDE RONDE ROAD
 WA 97347

COUNTY: ASOTIN
 LAT/LONG: 46.040°N 117.253°W
 PORTION OF: T7N, R44E, S35/36

SHEET 01 OF 01 DATE: 10/12/2023





Dreamz Rd

Boggan's Oasis on the Grande Ronde River

129

WHEELER SITE -
CABIN DEMO & CXT
INSTALLATION

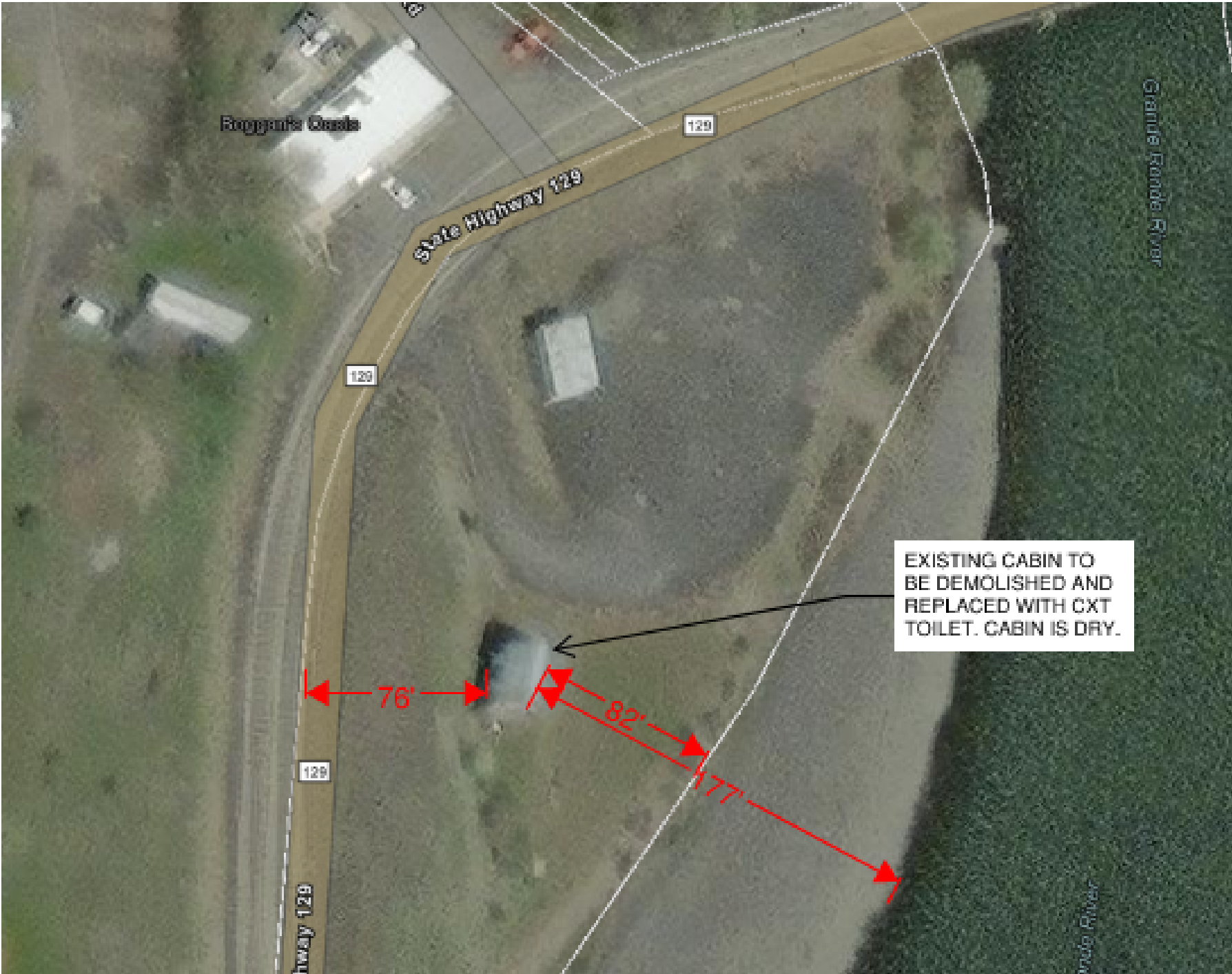


NEW ACCESS SITE
KIOSK

CONCRETE PICNIC
TABLES

CXT TOILET WITH PAVED
ADA PARKING SPACE

WHEELER SITE PROPERTY LINES



Grande Ronde River Boggan Site - Proposed Plan



Grande Ronde River Bezona Site - Proposed Plan



Grande Ronde Rd
46.035166, -117.272924

(1) concrete picnic table
planned. Potential locations

Grande Ronde River