



Washington
Department of
**FISH and
WILDLIFE**

Snohomish Estuary Project Prioritization





Advisory Group Members

Name	Affiliation
Grant Moen	City of Everett
Jim Shannon	Hart Crowser
Josh Chamberlin	NOAA
Mike Rustay	Snohomish County
Frank Leonetti	Snohomish County
Scott Moore	Snohomish County
Lisa Tario	Snohomish County
Kye Iris	Snohomish County
Sharon Swan	Snohomish County
Gretchen Glaub	Snohomish County: Snohomish Basin Lead Entity

Name	Affiliation
Kurt Nelson	Tulalip Tribes
Morgan Ruff	Tulalip Tribes
Brett Shattuck	Tulalip Tribes
Colin Wahl	Tulalip Tribes
CK Eidem	Ducks Unlimited
Matt Baerwalde	Snoqualmie Tribe
Molly Bogeberg	The Nature Conservancy
RaeLynn Asah	Puget Sound Energy
Karen Worcester	Puget Sound Energy
Patrick Robinson	Puget Sound Energy
Eliza McGovern	WSDOT

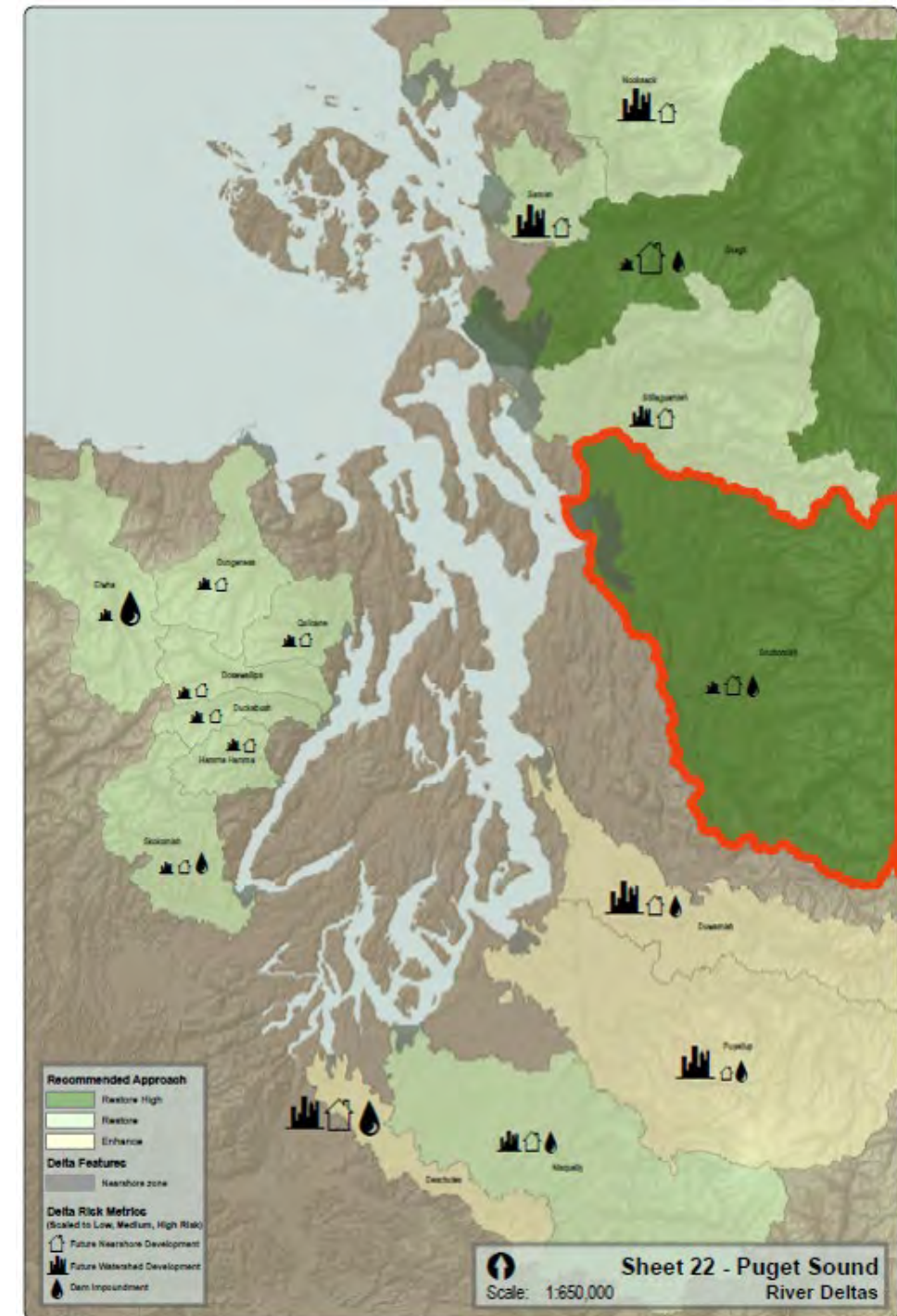
The Snohomish delta is significant at a Puget Sound and nation-wide scale.

2nd largest watershed in Puget Sound – 1,856 square miles.

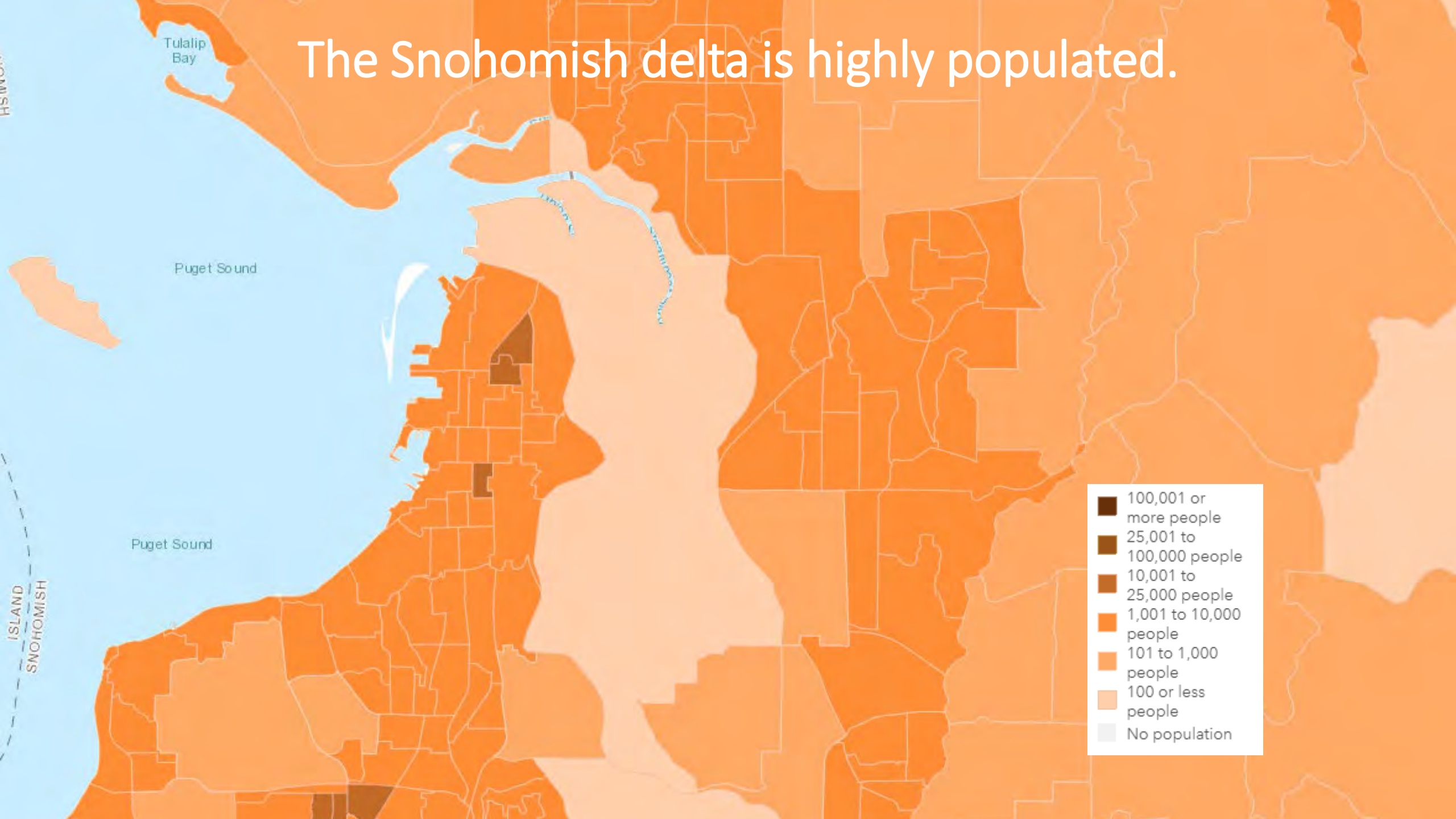
1 of only 2 deltas that PSNERP Strategies Report recommends as “**High Priority Restore**”.

25-50% of coho in Puget Sound come from the Snohomish.

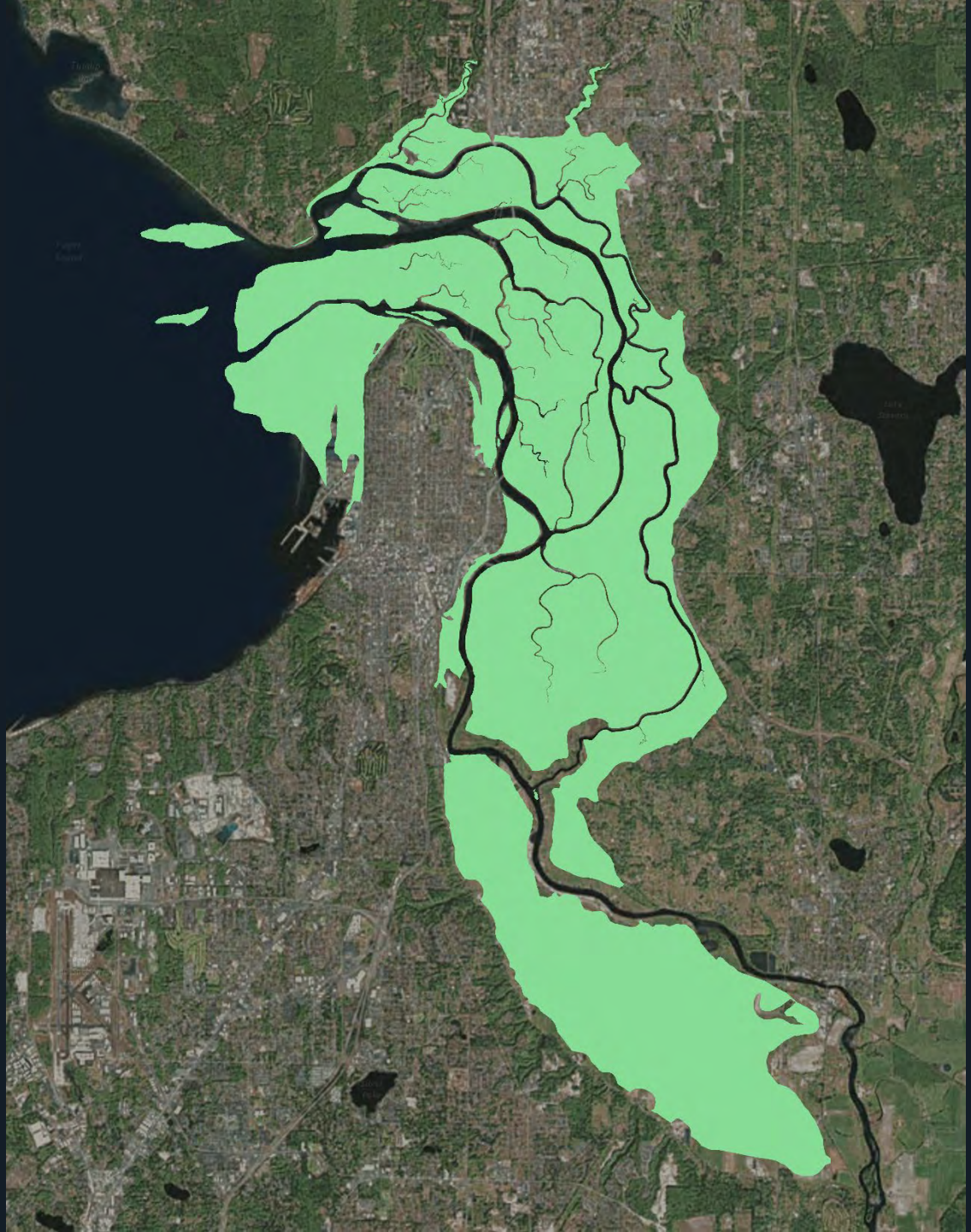
1 of 7 Resilient Lands and Waters designated nationwide by Obama Administration.



The Snohomish delta is highly populated.



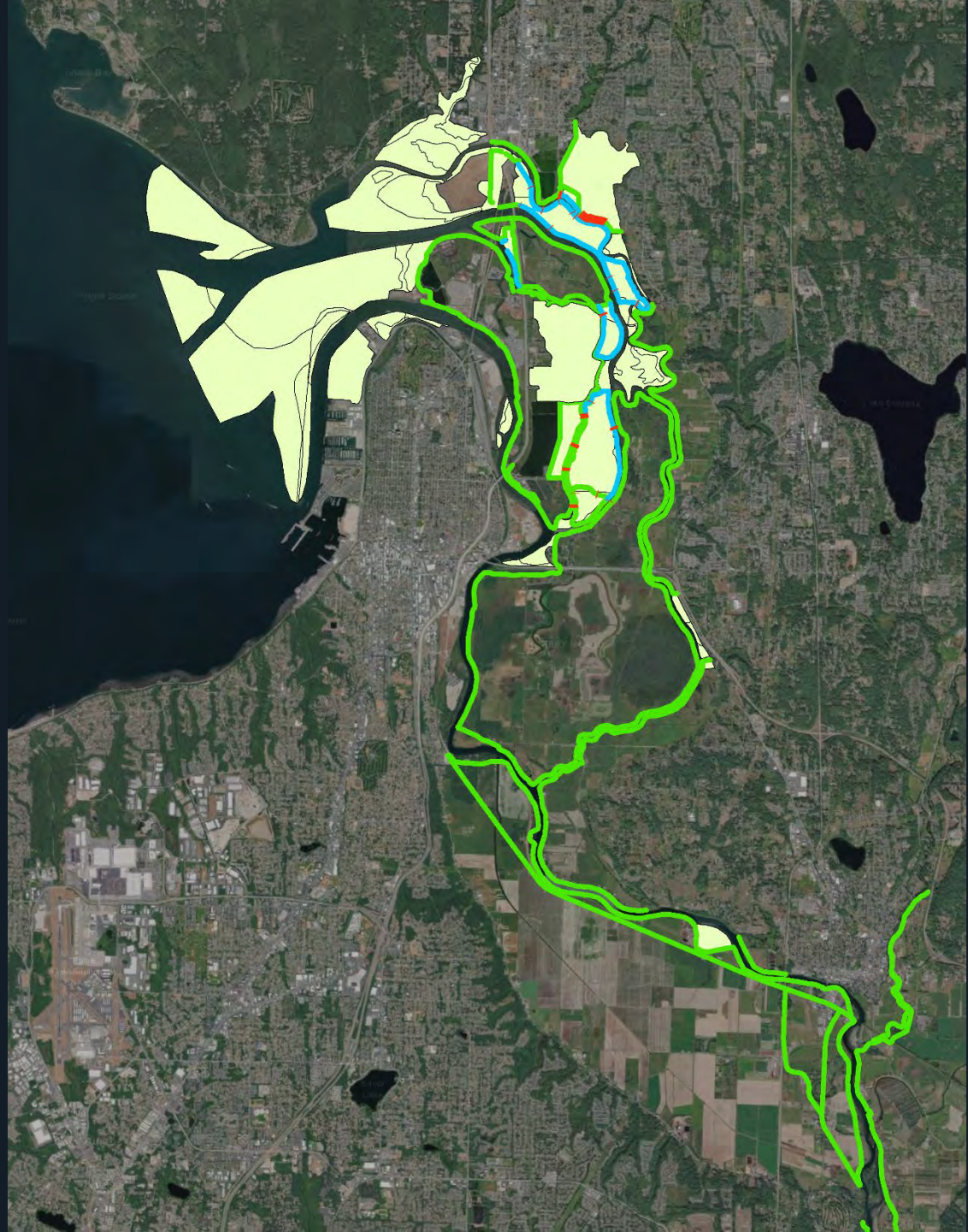
Ecosystem processes
are degraded.



Ecosystem processes
are degraded.



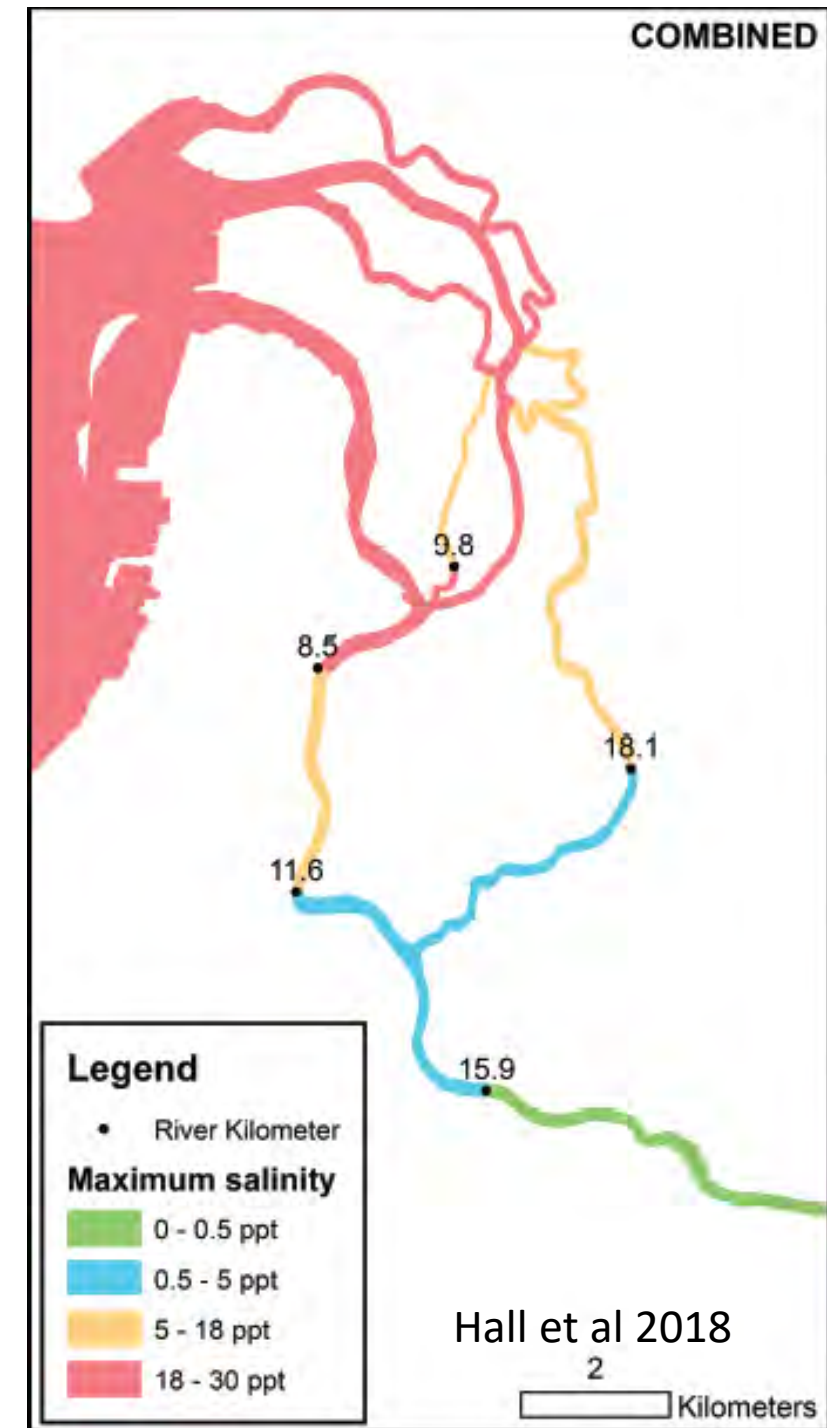
Ecosystem processes
are degraded.



Tidal wetlands have been lost at varying degrees by category.

Tidal Wetland	Historic Area (sq km)	Current Area (sq km)	Change
Tidal Freshwater	53.07	5.18	Loss (-90% Area)
Oligohaline Transition	13.13	0	Loss (-100% Area)
Estuarine Mixing	9.5	2.95	Loss (-69% Area)
Euryhaline Unvegetated	8.95	10.2	Gain (14% Area)
Totals	84.65	18.3	

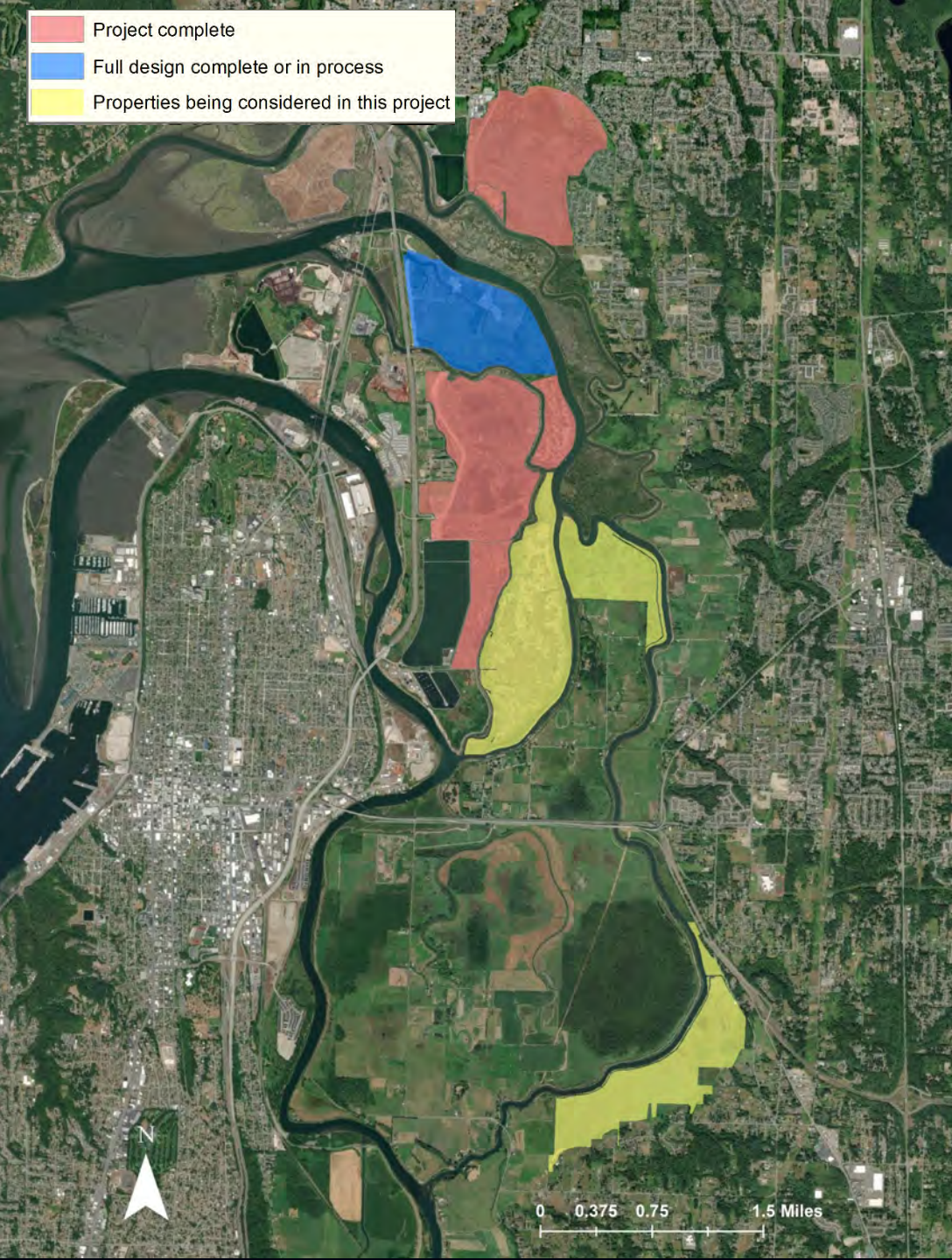
Simensted et al 2011-01.



But there is hope...



...though Chinook are at less than 10% of historic populations.



Many estuary projects have been **completed** or **designed** in the last 20 years.

Note that they are in the lower delta, high salinity.

There is momentum and opportunity to keep doing estuary restoration projects:



Sustainable Lands Strategy and other watershed forums provide productive operating environment.

Public land ownership in historic river delta.

Robust monitoring program
(NOAA, Tulalip Tribes, Snohomish County, USGS).



But...we don't know what the next big project will be.



No new projects are underway.

It takes 5-20 years to complete a large project from start to finish.

Snohomish County and Washington state are facing budget cuts – partnership is more important than ever for restoration.

A landscape photograph of a river or estuary. The water is calm, reflecting the sky and the surrounding trees. On the left, there are several tall, dark evergreen trees. In the center and right, there are more trees, some of which appear to be dead or dormant, with bare branches. The sky is filled with soft, grey clouds. The overall scene is serene and natural.

Project Purpose:

Queue up the next large estuary project in the Snohomish delta.

Puget Sound

City of Everett

Property boundary lines are approximate.

Spencer Island

North Tip Ebey Island

Diking District 6

Approach: Investigate a broad area of public land where previous feasibility studies and monitoring efforts identify potential for significant ecosystem restoration.

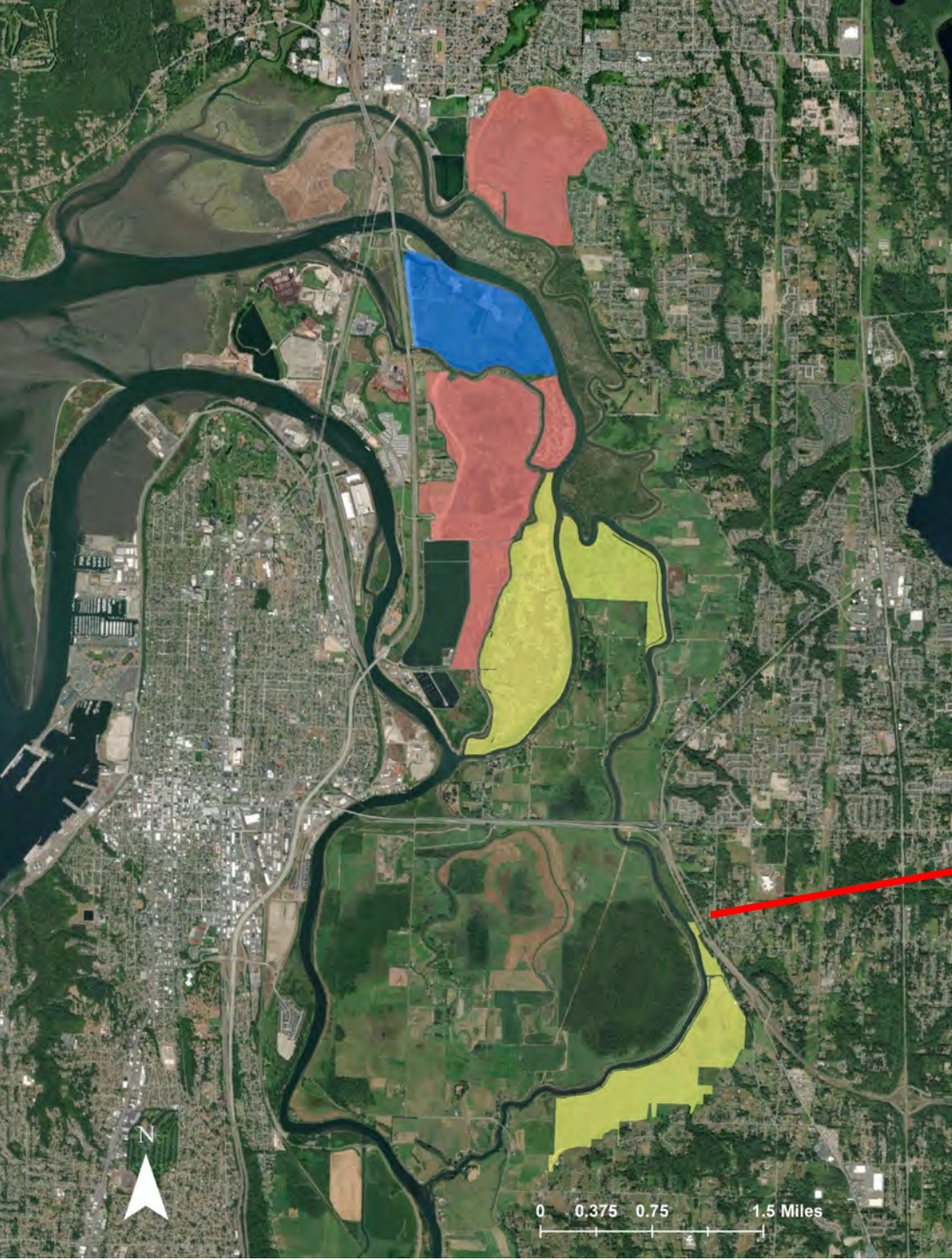
Google Earth

3000 ft

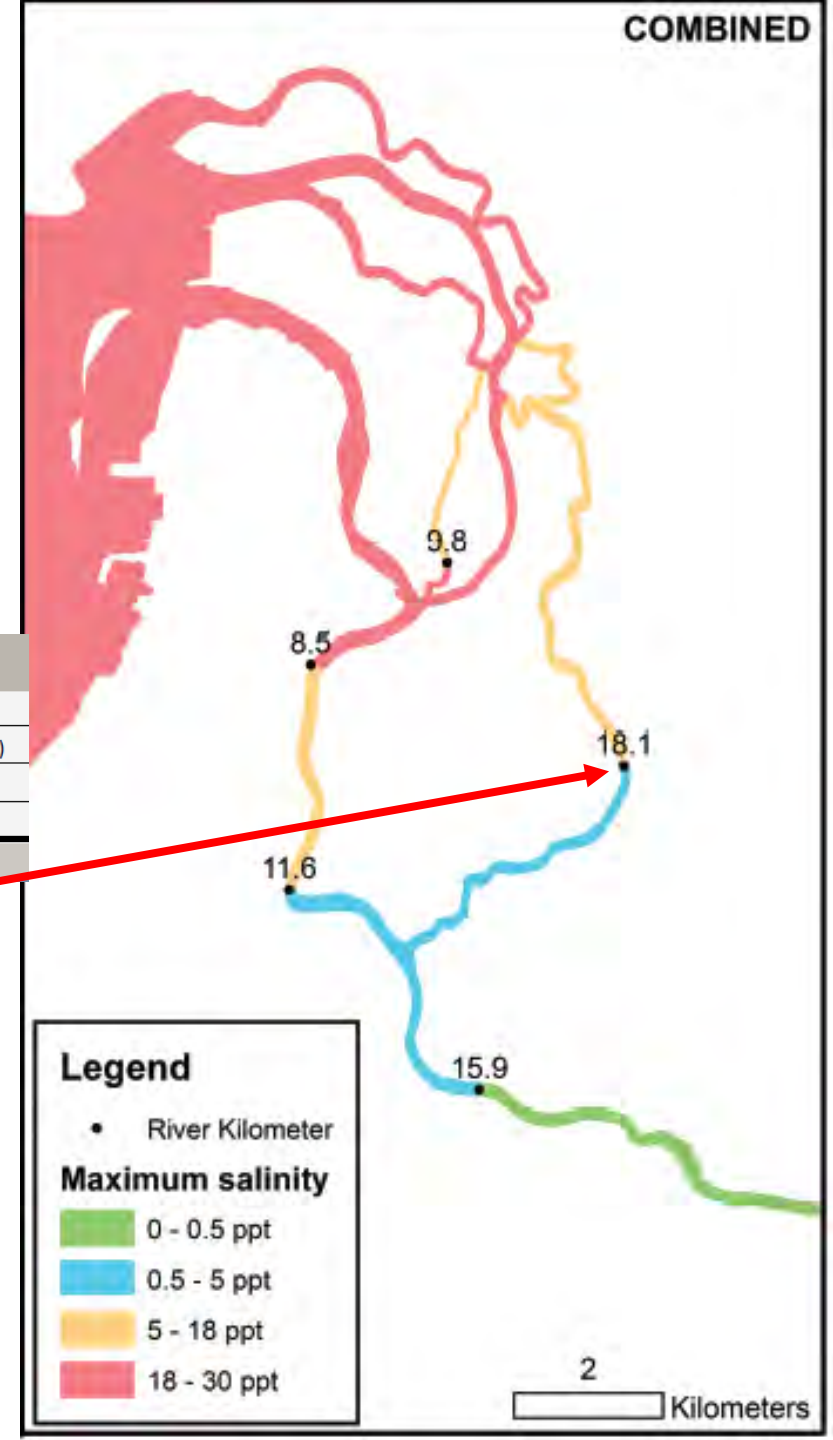




Almost 1000 acres of
WDFW/County Land



Tidal Wetland	Historic Area (sq km)	Current Area (sq km)	Change
Tidal Freshwater	53.07	5.18	Loss (-90% Area)
Oligohaline Transition	13.13	0	Loss (-100% Area)
Estuarine Mixing	9.5	2.95	Loss (-69% Area)
Euryhaline Unvegetated	8.95	10.2	Gain (14% Area)
Totals	84.65	18.3	



Purpose:

Broad support for the next large estuary project

- Which one is the closest to being ready, has the easiest hurdles to overcome?

Prioritized list of projects considered

Use prioritization report to secure funding for feasibility/design

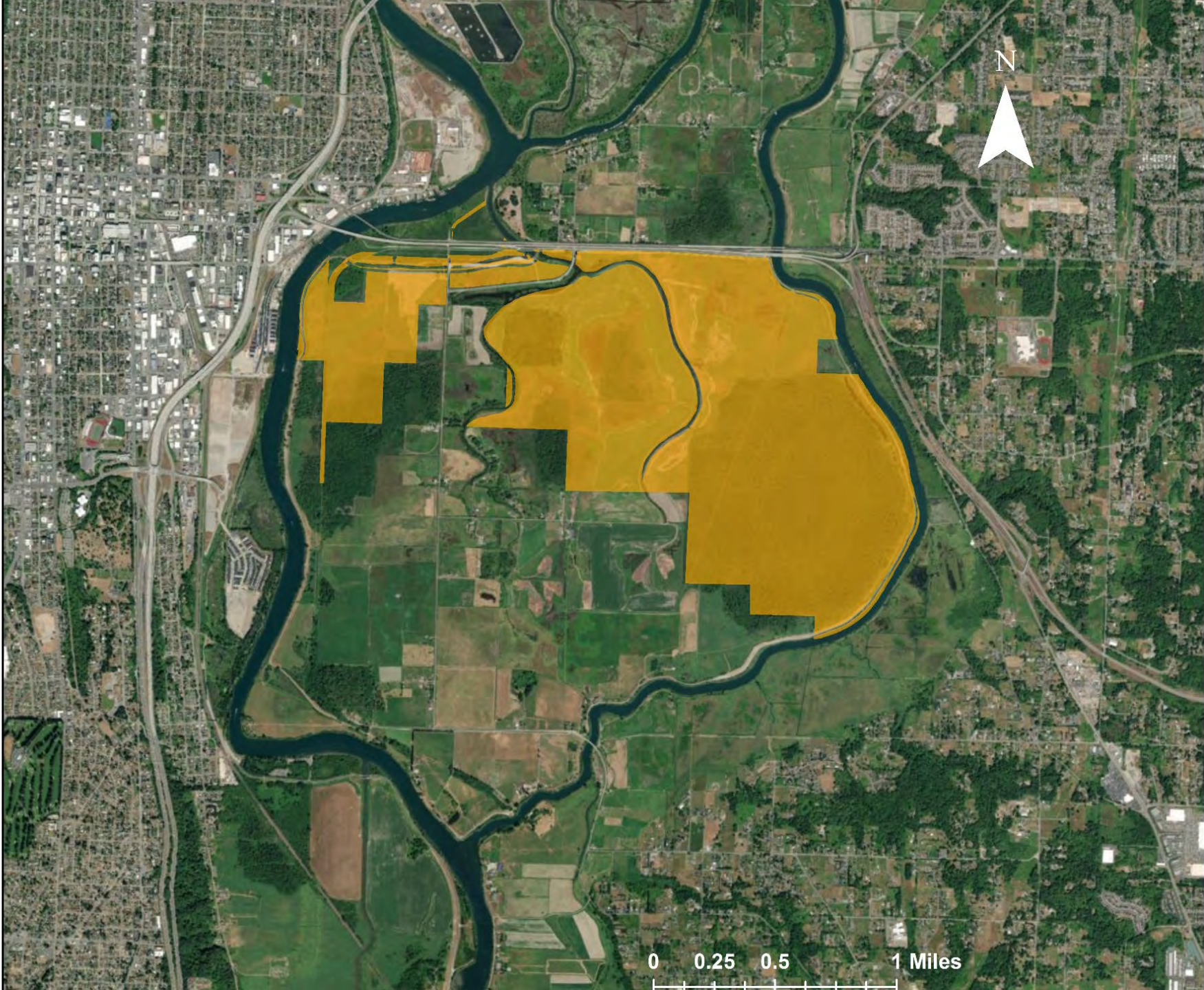


Scope:

- Snohomish River estuary
 - Spencer Island
 - DD6
 - North tip of Ebey


Are we missing anything?





0 0.25 0.5 1 Miles





Why are
you here?

Sideboards
Funding
Public Property





Snohomish Prioritization Schedule

Task	Q2 2020	Q3 2020	Q4 2020	Q1 2021	Q2 2021	Q3 2021	Q4 2021	Q1 2022	Q2 2022
Snohomish Estuary Planning & Prioritization Meetings (3 meetings)	Prep		Meetings Dec-Mar						
Estuary Prioritization Report				Begin Feb; complete April					

Snohomish River Delta Estuary Planning & Prioritization

Advisory Group Meetings

1

Meeting 1:
Provide
project
background

2

Meeting 2:
Develop
shared goals

3

Meeting 3:
Gather input

Follow-up:
How input
was used



1

Meeting 1: Provide project background



2

Meeting 2: Develop Shared Goals



3

Meeting 3: Gather Input



Follow-Up: How Input Was Used

Questions?

