

2018-19 Willapa Bay NOF Salmon Seasons Draft version: 04/12/2018

Salmon sections only. Minimum size 12". Blue = changes from 2017-18 salmon season

WATER	SEASON	DAILY LIMIT	DAILY ADULT LIMIT	ADDITIONAL RULES
MARINE AREA 2.1 East of a line from Cape Shoalwater to Leadbetter Point	July 1 – 31	2		Open concurrent with the ocean (Area 2) for SALMON. Area 2 rules apply. Only 1 may be a CHINOOK. Release wild Coho.
Control Zone	Aug. 1 – Jan. 31	6	3	Only 1 may be a wild, adult Coho. Release wild CHINOOK. Aug. 1 – Sept. 30: North River Area Closure. Anglers may fish with two poles with Two-pole endorsement.
BEAR RIVER – from mouth (Hwy 101 Bridge) to Lime Quarry Road (approx. 2 river miles)	Sept. 1 – Jan. 31	6	4	Only 1 may be a wild, adult Coho. Release wild CHINOOK. Aug. 16 – Nov. 30: night closure, anti-snagging rule and barbless hooks required.
FORK CREEK from Forks Creek Hatchery rack upstream 500' at fishing boundary sign	Oct. 1 – Jan. 31	6	3	Only 1 may be a wild, adult Coho. Release wild CHINOOK. Closed waters: ADA Night Closure. Oct. 1 – Nov. 30: single-point barbless hooks required and stationary gear restriction.
NASELLE RIVER – from Hwy 101 Bridge to the South Fork Naselle River	Aug. 1 – Jan. 31	6	4	Only 1 may be a wild, adult Coho. Release wild CHINOOK. Aug. 1 – Nov. 15: night closure, anti-snagging rule and barbless hooks required. Feb. 1 – Apr 15: Selective Gear Rules (SGR). Aug. 1 – Jan. 31: anglers may fish with two poles with the Two-Pole Endorsement.
from South Fork Naselle River upstream to the Hwy 4 Bridge	Aug. 1 – Sept. 30	6	2	Only 1 may be a wild, adult Coho. Release wild CHINOOK. Aug. 1 – Nov. 15: night closure, anti-snagging rule, barbless hooks required and stationary gear restriction. Feb. 1 – Apr 15: Selective Gear Rules (SGR).

2018-19 Willapa Bay NOF Salmon Seasons *Draft version: 04/12/2018*

	Oct. 1 – Jan. 31	6	4	<p>Only 1 may be a wild, adult Coho. Release wild CHINOOK. Aug. 1 – Nov. 15: night closure, anti-snagging rule, barbless hooks required and stationary gear restriction. Feb. 1 – Apr 15: Selective Gear Rules (SGR).</p>
From Hwy 4 Bridge to the upstream entrance of the Naselle Hatchery Attraction Channel	Aug. 16 – Sept. 30	6	2	<p>Only 1 may be a wild, adult Coho. Release wild CHINOOK. CLOSED WATERS: from the upstream entrance of the hatchery attraction channel to downstream 300'. Internal combustion motors prohibited. Aug. 16 – Nov. 15: night closure, anti-snagging rule and barbless hooks required and stationary gear restriction. Aug. 16 – Oct. 15: bait or lure must be suspended below a float. Feb. 1 – Apr 15: Selective Gear Rules (SGR).</p>
	Oct. 1 –Jan. 31	6	4	<p>Only 1 may be a wild, adult Coho. Release wild CHINOOK. CLOSED WATERS: from the upstream entrance of the hatchery attraction channel to downstream 300'. Internal combustion motors prohibited. Aug. 16 – Oct. 15: bait or lure must be suspended below a float. Aug. 16 – Nov. 15: night closure, anti-snagging rule and barbless hooks required and stationary gear restriction. Feb. 1 – Apr 15: Selective Gear Rules (SGR).</p>

2018-19 Willapa Bay NOF Salmon Seasons Draft version: 04/12/2018

From the upstream entrance of the Naselle Hatchery Attraction Channel to the Crown Mainline (Salme) Bridge	Oct. 16 – Jan. 31	6	4	<p>Only 1 may be a wild, adult Coho. Release wild CHINOOK. CLOSED WATERS: from the falls in T10N, R8W, Sec 6 downstream 400' and Aug. 1 – Oct. 15: downstream of the full spanning concrete diversion structure at the Naselle Hatchery. Internal combustion motors prohibited. Aug. 1 – Nov. 15: night closure, anti-snagging rule, barbless hooks required and stationary gear restriction. Feb. 1 – Apr 15: SGR.</p>
NEMAH RIVER, MIDDLE From mouth upstream to the DNR bridge on Middle Nemah A-line Rd.	Sept. 1 – Jan. 31	6	4	<p>Only 1 may be a wild, adult Coho. Release wild CHINOOK. Aug 1 – Nov. 30: night closure and single-point barbless hooks required.</p>
NEMAH RIVER, NORTH From Hwy 101 Bridge upstream to bridge on Nemah Valley Rd	Aug. 1 – Jan. 31	6	4	<p>Only 1 may be a wild, adult Coho. Release wild CHINOOK. Aug. 1 – Nov 30: night closure, single-point barbless hooks required and stationary gear restriction.</p>
from bridge on Nemah Valley Rd upstream approx. 1.66 miles to Hancock property line	Closed to salmon fishing (GF, Cutthroat available)			
from Hancock property line upstream to the temporary weir (approx. 210' above the Nemah Hatchery Bridge)	Aug. 1 – Sept. 15	6	4	<p>Only 1 may be a wild, adult Coho. Release wild CHINOOK. Aug 16 – Nov. 30: night closure and anti-snagging rule. Dec. 1 – Mar. 31: Selective Gear Rules (SGR) Senior anglers only (70 years and over)</p>
from the temporary weir (approx. 210' above the Nemah Hatchery Bridge) upstream to the Nemah Hatchery Dam	Closed to ALL fishing			
from the Nemah Hatchery Dam to N700 Rd (46 28.58N, 123 48.54W)	Oct. 1 – Jan. 31	6	4	<p>Only 1 may be a wild, adult Coho. Release wild CHINOOK. Aug. 16 – Nov. 30: night closure and anti-snagging rule. Dec. 1 – Mar. 31: Selective Gear Rules (SGR)</p>
NEMAH RIVER, SOUTH From mouth (Lynn Pt) to confluence with Middle Nemah	Sept. 1 – Jan. 31	6	4	<p>Only 1 may be a wild, adult Coho. Release wild CHINOOK. Sept. 1 – Nov. 30: night closure and single-point barbless hooks required.</p>

2018-19 Willapa Bay NOF Salmon Seasons *Draft version: 04/12/2018*

NIAWIAKUM RIVER From Hwy 101 Bridge to the South Bend/Palix Rd. Bridge	CLOSED TO SALMON FISHING (GF available)			
NORTH RIVER From Hwy 105 Bridge to Fall River	Oct. 1 – Jan. 31	6	4	Only 1 may be a wild, adult Coho. Release wild CHINOOK. Aug. 16 – Nov. 30: night closure and single-point barbless hooks required. From Salmon Creek (located approx. 2 miles upstream from Hwy 101) to Fall River: anti-snagging rule.
PALIX RIVER From the Hwy 101 Bridge to the mouth of the Middle Fork	CLOSED TO SALMON FISHING (GF available)			
SMITH CREEK from mouth to Hwy 101 Bridge	Oct. 1 – Dec. 31	6	3	Only 1 may be a wild, adult Coho. Release wild CHINOOK. Aug. 16 – Nov. 30: night closure and single-point barbless hooks required.
WILLAPA RIVER From mouth (City of South Bend boat launch) to Hwy 6 Bridge (approx.. 2 miles below mouth of Trap Creek)	Aug. 1 – Jan. 31	6	4	Only 1 may be a wild, adult Coho. Release wild CHINOOK. Aug. 1 – Nov. 30: fishing from any floating device prohibited from second bridge on Camp One Rd. upstream to mouth of Mill Creek (approx. 0.5 miles). Night closure, single-point barbless hooks required and stationary gear restriction except stationary gear restriction not in effect from mouth to WDFW access at mouth of Ward Creek/Wilson Creek. Aug. 1 – Jan.31: from the mouth (City of South Bend boat launch) to second bridge on Camp One Rd, anglers may fish with two poles with Two-Pole Endorsement.
From Hwy 6 Bridge (approx.. 2 miles below mouth of Trap Creek) upstream to Fork Creek	Aug. 16 – Sept. 15	6	2	Only 1 may be a wild, adult Coho. Release wild CHINOOK. Aug. 16 – Nov. 30: night closure, single-point barbless hooks required and stationary gear restriction.
	Sept. 16 – Jan. 31	6	4	Only 1 may be a wild, adult Coho. Release wild CHINOOK. Aug. 16 – Nov. 30: night closure, single-point barbless hooks required and stationary gear restriction.

2018-19 Willapa Bay NOF Salmon Seasons *Draft version: 04/12/2018*

From Fork Creek upstream to Hwy 6 Bridge (near the town of Lebam)	Oct. 31 – Jan. 31	6	4	Only 1 may be a wild, adult Coho. Release wild CHINOOK. Aug. 16 – Oct. 31: night closure, single-point barbless hooks required and stationary gear restriction.
WILLAPA RIVER, SOUTH FORK From mouth to bridge on Pehl Rd.	Aug. 1 – Jan. 31	6	3	Only 1 may be a wild, adult Coho. Release wild CHINOOK. CLOSED WATERS: from falls/fish ladder downstream 400' in T13N, R8w, Sec. 6. Aug. 1 – Nov. 30: night closure, anti-snagging rule and barbless hooks required.

AREA 2

Conch Bay

Rec Boundary

Commercial Boundary

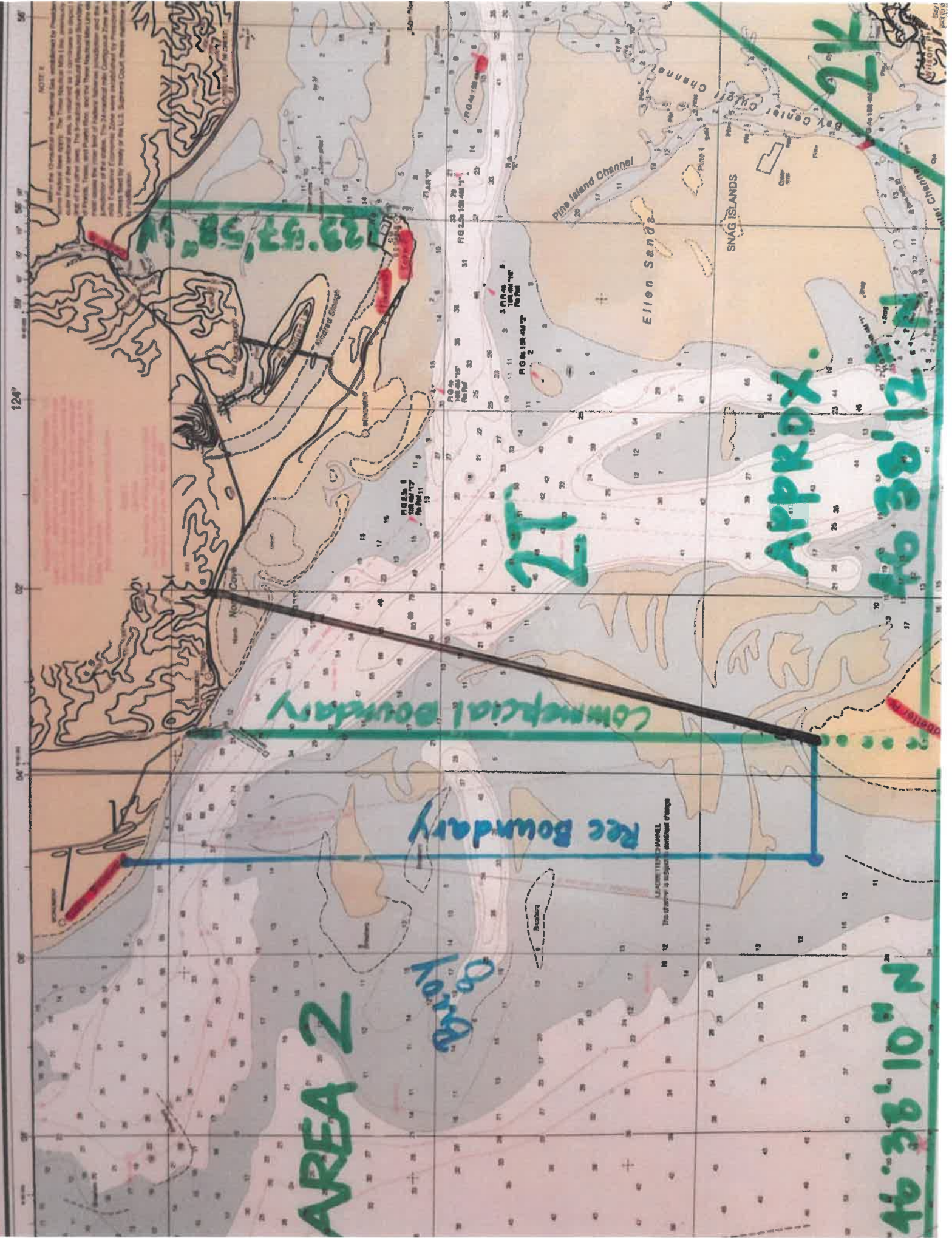
27

APPROX.

46°38'10" N

46°38'12" N

27



2018 Willapa Bay Salmon Fishery Planning Model

Updater 2018 North of Falcon

PFMC # coho FRAM # 1830 Final

Name of model:
Filed with CR-102

Marine Area Rec: Chinook MSF Aug 1, 3 fish bag, 1 coho

Freshwater: 4 fish bag, 1 wild coho

Commercial:

Commercial Chinook Drop out	0.03	Sport hook & line drop off	0.05
Commercial Coho Drop out	0.02	Marine Hooking Mortality	0.14
Small mesh gear mortality	0.56	Freshwater Hooking Mortality	0.10
Tangle net mortality	0.31		

	Chinook					Coho								Total				
	Total Hatchery	Willapa North	Nemah Palix	Naselle Bear		Total Natural	Willapa North	Nemah Palix	Naselle Bear	Total Hatchery	Willapa North	Nemah Palix	Naselle Bear		Total Natural	Willapa North	Nemah Palix	Naselle Bear
Pre-Season Runsize	40,257	16,055	19,580	4,622		3,838	2,195	490	1,153	34,993	6,893	0	28,100	18,994	10,691	2,734	5,568	39,932
Escapement Goal	3,525	200	1,950	1,375		4,353	2,172	328	1,853	2,500	1,000	0	1,500	13,600	9,679	1,294	2,628	35,400
Harvestable	36,732	15,855	17,630	3,247		-515	23	162	-700	32,493	5,893	0	26,600	5,394	1,012	1,441	2,940	4,532

0.75 25% Savings for 12 hr fishery using 24 hr rate

Based on 12-Hr rates

Stat Week	2017 Dates	Days Fished					MSF					Chinook Catch Natural					Hatchery Chinook					Natural Chinook					Hatchery Coho				Natural Coho				CHUM MSF	Chum Catch					Total Chum
		T	U	N	R	M	T	U	N	R	M	T	U	N	R	M	Total Hatchery	Total WB Origin	Willapa North	Nemah Palix	Naselle Bear	Total Natural	Total WB Origin	Willapa North	Nemah Palix	Naselle Bear	Total Hatchery	Willapa North	Nemah Palix	Naselle Bear	Total Natural	Willapa North	Nemah Palix	Naselle Bear		T	U	N	R	M	
		32	Aug 5 - Aug 11	0.0	0.0	0.0	0.0	0.0	1.00	1.00	1.00	1.00	1.00	0	0	0	0	0	0	0	0	0	0	0	0	0	0	0	0	0	0	0	0	0		0	0	1.00	0	0	
49	Nov. 25 - Dec 1	0.0	0.0	0.0	0.0	0.0	1.00	1.00	1.00	1.00	1.00	0	0	0	0	0	0	0	0	0	0	0	0	0	0	0	0	0	0	0	0	0	0	1.00	0	0	0	0	0	0	
Commercial Catch Totals		31	35	39	15	35						50	63	90	0	142	6,299	6,299	2,251	3,124	925	423	345	141	54	150	4,482	1,172	0	3,310	2,468	2,014	344	111	16	634	692	367	85	1,435	3,213
Commercial Harvest Rate																	0.156	0.140	0.160	0.200		0.090	0.064	0.110	0.130	0.128	0.170		0.118	0.130	0.188	0.126	0.020						0.080		

Willapa R Natural Chinook Mortality Rate	Naselle Natural Chinook Mortality Rate	Chum Mortality Rate
Projected Cap	Projected Cap	Projected Cap
Harvest Rate 18.9%	Harvest Rate 16.8%	Harvest Rate 9.0%

Recreational Marine Catch

3,942	3,550	171	221
0.098	0.221	0.009	0.048

285	254	2	29	1,879	400	1,479	959	767	118	73
0.074	0.116	0.005	0.025	0.054	0.058	0.053	0.050	0.072	0.043	0.013

148
0.004

Recreational Freshwater Catch

8,033	906	6,639	488
0.200	0.056	0.339	0.106

55	19	22	14	1,911	282	1,629	324	178	2	145
0.014	0.009	0.044	0.012	0.055	0.041	0.058	0.017	0.017	0.001	0.026

218
0.005

2018 Chinook Policy Guidance:	Commercial	9.00%	9%
HR for Willapa Bay	Rec Marine	7.4%	
	Rec Freshwater	1.4%	

Total Recreational Catch

11,975	4,456	6,810	710
0.297	0.278	0.348	0.154

340	273	24	43	3,790	682	3,108	1,283	945	121	218
0.089	0.124	0.049	0.037	0.108	0.099	0.111	0.068	0.088	0.044	0.039

367
0.009

Expected Escapement

21,982	9,349	9,646	2,987
--------	-------	-------	-------

3,153	1,781	412	959	26,721
-------	-------	-----	-----	--------

Goal **15,243**

Goal **36,352**

Total Harvest Rates

0.454	0.418	0.507	0.354
-------	-------	-------	-------

0.178	18.9%	0.158	16.8%	0.236
-------	--------------	-------	--------------	-------

Goal **0.198**

Goal **9.0%**

2018 WILLAPA BAY FISHERY SUMMARY

CHINOOK										
Total Hatchery	Willapa North	Nemah Palix	Naselle Bear	Total Natural	Willapa North	Nemah Palix	Naselle Bear			
2018 Pre-Season Runsize	40,257	16,055	19,580	4,622	3,838	2,195	490	1,153		

HATCHERY				
Total Hatchery	Hatchery WB Origin	Willapa North	Nemah Palix	Naselle Bear
Commercial Catch	6,299	2,251	3,124	925
Commercial Impacts				
Commercial Harvest Rate (HR)	15.6%	14.0%	16.0%	20.0%

NATURAL				
Total Natural	Natural WB Origin	Willapa North	Nemah Palix	Naselle Bear
4	4	3	0	1
418	342	138	54	150
	9.0%	6.4%	11.0%	13.0%

Recreational Marine Catch	3,942	3,550	171	221
Marine HR	9.8%	22.1%	0.9%	4.8%
Recreational Freshwater Catch	8,033	906	6,639	488
FW HR	20.0%	5.6%	33.9%	10.6%

	285	254	2	29
	7.4%	11.6%	0.5%	2.5%
	55	19	22	14
	1.4%	0.9%	4.4%	1.2%

Expected Escapement	21,982	9,349	9,646	2,987
Total Exploitation Rate	45.4%	41.8%	50.7%	35.4%

	3,153	1,781	412	959
	17.8%	18.9%	15.8%	16.8%

Total Commercial Days Scheduled						
Stat Week	2T	2U	2N	2R	2M	
32	0	0	0	0	0	
33	0	0	0	0	0	
34	0	0	0	0	0	
35	0	0	0	0	0	
36	0	0	2	0	1	12 hr openings, CHK MSF and Chum Retention allowed, 2M & N Tangle Net
37	0	0	3	0	1	
38	3	3	5	0	5	12 hr openings, CHK MSF & Chum Retention allowed, 2T, M, & N gillnet small mesh gear, 2U Tangle Net
39	3	3	5	0	4	
40	4	3	4	0	4	
41	1	4	0	0	0	
42	0	0	0	0	0	12 hr openings, CHK MSF, Chum Release required wk 44, 2T, M, & N gillnet small mesh gear, 2U Tangle Net
43	0	0	0	0	0	
44	0	2	0	0	0	
45	5	5	5	0	5	
46	5	5	5	5	5	
47	5	5	5	5	5	24-hr days, Chinook MSF, Chum Release required, Gillnet, small mesh gear
48	5	5	5	5	5	
49	0	0	0	0	0	
Total	31	35	39	15	35	

COHO								
Total Hatchery	Willapa North	Nemah Palix	Naselle Bear	Total Natural	Willapa North	Nemah Palix	Naselle Bear	
2017 Pre-Season Runsize	34,993	6,893	0	28,100	18,994	10,691	2,734	5,568

HATCHERY				
Total Hatchery	Willapa North	Nemah Palix	Naselle Bear	
Commercial Catch	4,482	1,172	0	3,310
Commercial Harvest Rate (HR)	12.8%	17.0%	0.0%	11.8%

NATURAL			
Total Natural	Willapa North	Nemah Palix	Naselle Bear
2,468	2,014	344	111
13.0%	18.8%	12.6%	2.0%

Recreational Marine Catch	1,879	400	0	1479
Marine HR	5.4%	5.8%	0.0%	5.3%
Recreational Freshwater Catch	1,911	282	0	1629
FW HR	5.5%	4.1%	0.0%	5.8%

959	767	118	73
5.0%	7.2%	4.3%	1.3%
324	178	2	145
6.8%	1.7%	0.1%	2.6%

Expected Escapement	26,721			
Total Exploitation Rate	23.6%			

15,243			
19.8%			

TOTAL CHUM	
2017 Pre-Season Runsize	39,932
Commercial Catch	3,213
Commercial Harvest Rate (HR)	8.0%

Recreational Marine Catch	148,485
Marine HR	0.4%
Recreational Freshwater Catch	218
FW HR	0.5%

Recreational Retention allowed

Expected Escapement	36,352
Total Exploitation Rate	9.0%

Recreational Regulations									
Area	Section	Season	Daily Limit	Adult Bag Limit	2-Pole	2-Pole Upper Extent	Natural CHK Retention	Natural Coho Retention	
Marine Area 2.1	New Control Zone	July 1 - July 31	Same as Marine Area 2 - Daily limit 2. Only 1 may be a CHK. Release wild Coho.						
		Aug. 1 - Jan. 31	6	3	Yes	-	0	1 coho	
Willapa River	mouth upstream to Hwy 6 Bridge	Aug. 1 - Jan. 31	6	4	Yes	2nd Bridge on Camp One Rd.	0	1	
	Hwy 6 upstream to Fork Creek	Aug. 16 - Sept. 15	6	2	Yes		0	1	
		Sept. 16 - Jan. 31	6	4	Yes		0	1	
	Fork Creek to Hwy 6 Br (near Lebam)	Oct. 31 - Jan. 31	6	4	No	-	0	1	
SF Willapa River	mouth to bridge on Pehl Rd	Aug. 1 - Jan. 31	6	3	No	-	0	1	
Fork Creek	Fork Crk Hatchery rack upstream 500' at the fishing boundary sign	Oct. 1 - Jan. 31	6	3	No	-	0	1	
North River	mouth upstream to Fall River	Oct. 1 - Jan. 31	6	4	No	-	0	1	
Smith Creek	mouth to Hwy 101 Bridge	Oct. 1 - Dec. 31	6	3	No	-	0	1	
North Nemah River	Hwy 101 Br. to Nemah Valley Rd. Br.	Aug. 1 - Jan. 31	6	4	No	-	0	1	
	Nemah Valley Rd. Br. Upstream to Hancock Property Line approx. 1.66 M		Closed to salmon fishing						
	Hancock Property Line upstream to temporary weir (approx. 210' above Nemah Hat Br)	Aug. 1 - Sept 15, Seniors Only*	6	4	No	-	0	1	
	temporary weir (approx. 210' above Nemah Hat Br) upstream to Nemah Hat. Dam		Closed to ALL fishing						
	Nemah Hatchery dam upstream to N700 Rd	Oct. 1 - Jan. 31	6	4	No	-	0	1	
Middle Nemah River	mouth to bridge on Middle Nemah A-line R	Sept. 1 - Jan. 31	6	4	No	-	0	1	
South Nemah River	mouth to confluence with Middle Nemah R	Sept. 1 - Jan. 31	6	4	No	-	0	1	
Palix River	Hwy 101 to mouth of Middle Fork		Closed to salmon fishing						
Niawiakum River	Hwy 101 Br. To the S. Bend/Palix Rd Br		Closed to salmon fishing						
Naselle River	mouth (Hwy 101) upstream to South Fork Naselle River	Aug. 1 - Jan. 31	6	4	Yes		0	1	
	from South Fork Naselle River upstream to Hwy 4 Bridge	Aug. 16 - Sept. 30	6	2	No	-	0	1	
		Oct. 1 - Jan. 31	6	4	No	-	0	1	
	Hwy 4 Bridge to entrance of Naselle Hat. Attraction Channel	Aug. 16 - Sept. 30	6	4	No	-	0	1	
	from entrance of Naselle Hat. Attraction Channel to Crown Mainline Br	Oct. 1 - Jan. 31	6	4	No	-	0	1	
Bear River	mouth upstream to Lime Quarry Rd	Sept. 1 - Jan. 31	6	4	No	-	0	1	

* Seniors defined as 70 years old and over

