

2019 WAAC Meeting

April 25, 2019

Last Resort KOA

Meeting Ground Rules

- Everyone in the group is valuable and is treated with respect
- One person's concern is the group's concern
- Confine discussion to the meeting topic
- Listen to understand
- Do not interrupt
- No personal attacks

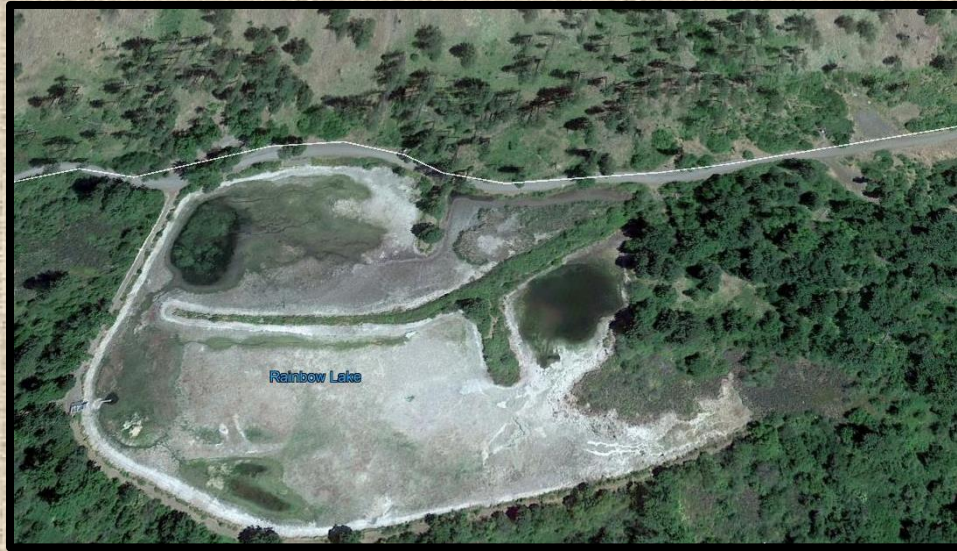
Management Plan Updates

- Blue Mountains Wildlife Area Complex Management Plan
 - Completed and posted on WDFW website summer 2019
- Updates Format
 - May change based on new management plan

Floodplain Management Plan

- Submitted for Capitol Projects for 2019-21
- Asked for \$5M, Received \$1M
 - FMP Team will meet again in May

Floodplain Management Plan



- Rainbow Lake Project
 - Major construction completed fall 2018

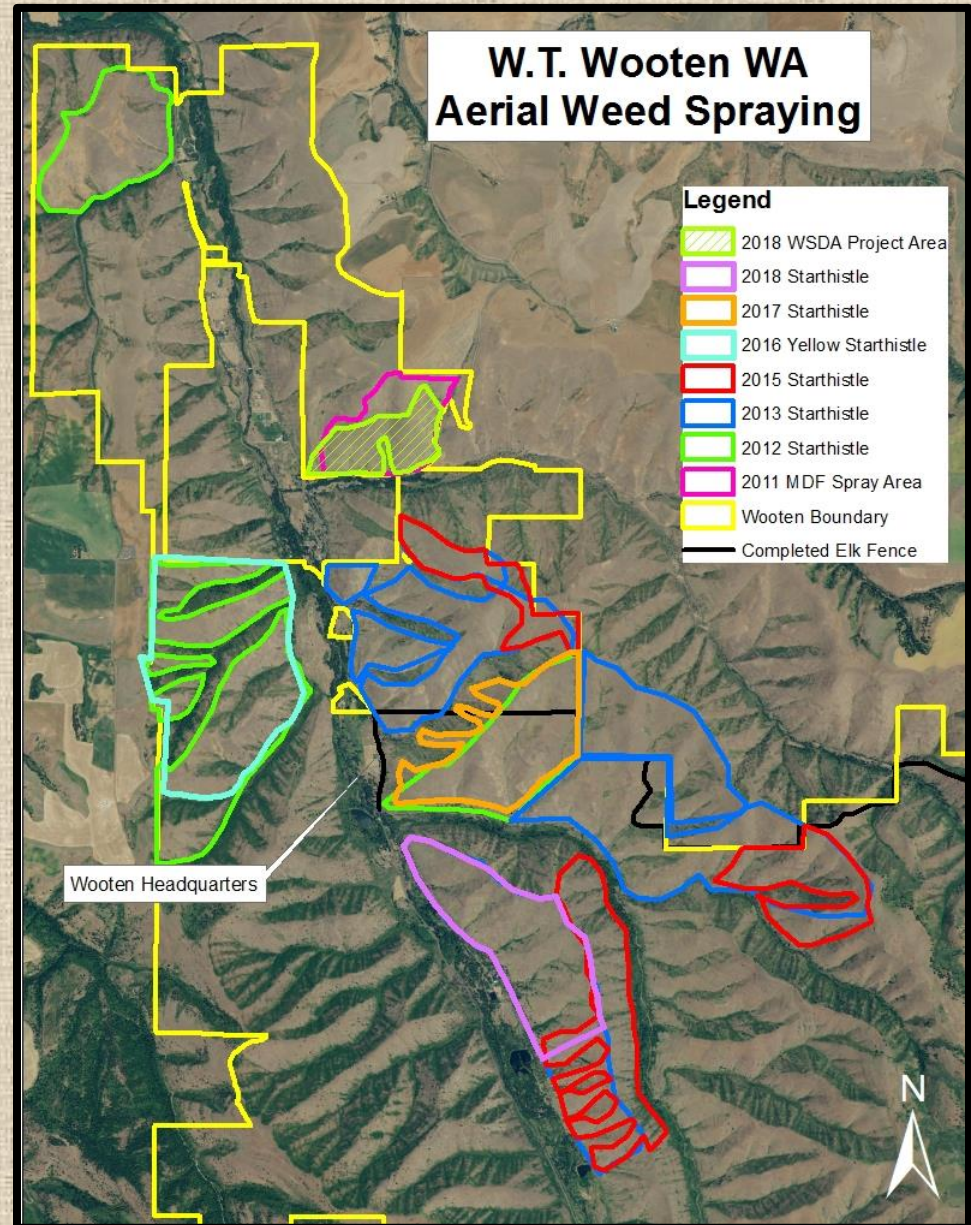


Floodplain Management Plan

- Rainbow Lake Project
 - Minor issues in process
 - Gravel on west dam
 - Informational signs installation
 - Hatchery pipeline issues
 - Planting wetlands continued
 - Free Fishing Weekend Event
 - In conjunction with Kid's Fishing Derby put on by USFS and Asotin County Sportsmen

Update on Grant Work

- 2018 Weed Spraying
 - 185 acres were aerially sprayed using RMEF funds
 - 119 acres were aerially sprayed using WSDA funds



Large Wood Projects

- 1 project occurring in summers 2020 & 2021
 - Rainbow Inlet to Hatchery Bridge
 - Engineered log jams
- All BPA funded for habitat restoration for spring Chinook and steelhead

Large Wood Projects

- Future Projects
 - Camp Wooten to Tucannon CG Bridge
 - Designs have not been started yet
 - USFS lands near Guard Station
 - Designs have not been started yet

Outhouse Replacement

- Fiberglass

018!!!!!!



Bighorn Sheep Update

- Currently have 18 sheep in the herd
 - 4 lambs survived from last year (out of 9 born)
- Majority of the herd spent the winter north of the elk fence near Blind Grade & Last Resort
- Will continue to try to ground dart and collar the sheep as opportunities present themselves

Wolf Update

- Tucannon Pack – 2 wolves; no working collars
- Touchet Pack – 4 wolves; no working collars
 - Original wolves left and new wolves moved in
- Butte Creek Pack – 2 wolves; 1 working collar
 - Originally made up Touchet Pack
 - Collared juvenile went to McCall, ID
- Grouse Flats Pack – 8 wolves; no working collars
 - Began trapping again this week
- Still have wolves from Oregon coming up, wandering around, and going back to Oregon

SE WA Black Bear Study

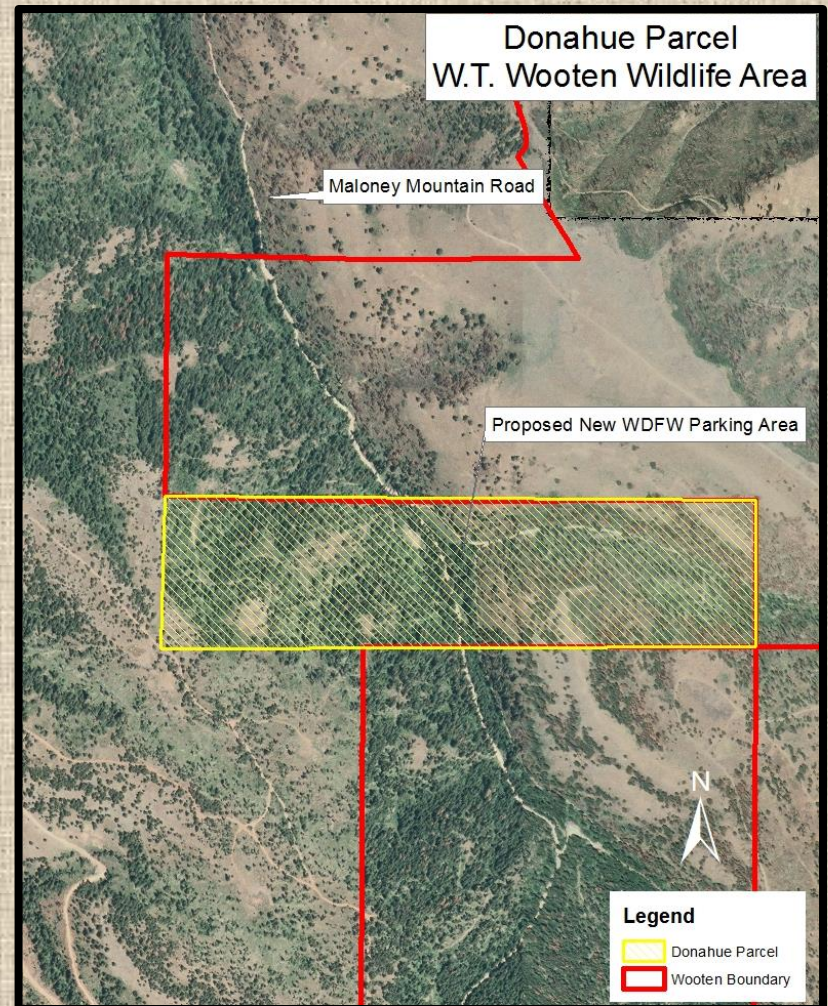
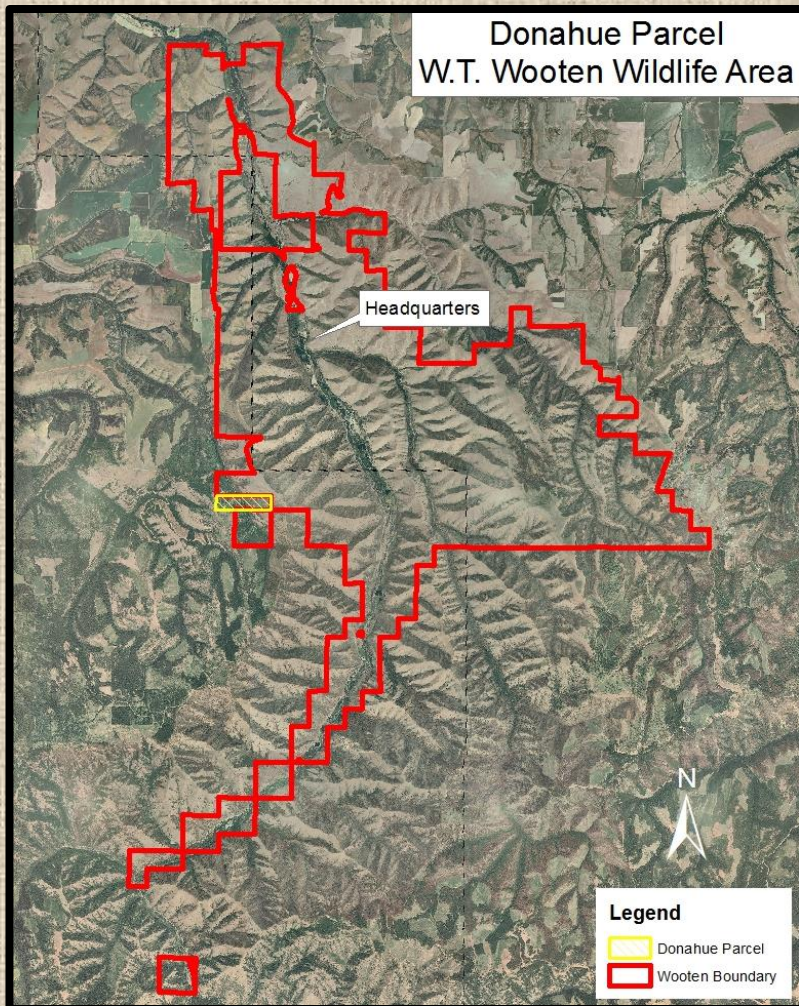
- Study starting this summer
 - Hair snare sets
 - Barbed wire corrals constructed around a bait station
 - Collect hair follicles for DNA testing
 - Multiple set visits per year
 - Identify individual bears
 - Mark/recapture to get population density estimate

Walla Walla Property Update

- Swegle Road Unit
 - Plan to continue to treat noxious weed issue
- McDonald Bridge Unit
 - Severe weed issues along dike removal project
 - Plan to continue to treat noxious weed issue

Donahue Property

- RMEF purchased 58 acre Donahue parcel
 - WDFW purchased from RMEF fall 2018



WAAC Communication

- Biennial newsletter
- New WDFW website launched March 24, 2019
 - Wooten WAAC page on the website
 - Meeting notes and handouts

Questions??

