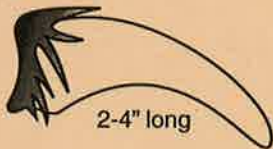


GRIZZLY BEAR

Front Claw



Front Track

Dish Face Profile

Smaller Rounded Ears

Shoulder Hump



BLACK BEAR

Front Claw



Front Track

Straight Face Profile

Larger Pointed Ears

No Shoulder Hump



Look for a combination of characteristics.

Color and size are sometimes misleading.

Know your bears ... identify one or more features.

GRIZZLY BEAR

- **Color** varies from blond to black. Often medium-to-dark-brown legs, hump, and underparts with light-tipped (grizzled) fur on head and upper body.
- Average **weight** is 300-550 pounds for males and 200-350 pounds for females.
- **Height** is 3.5 - 4 feet at shoulder when on all fours, and 6-7 feet when standing upright.
- Distinctive **shoulder hump** is actually muscle mass that enables powerful digging.
- Grizzly bears have a **dished in profile** between eyes and end of snout that helps distinguish them from black bears.
- **Ears** are round and proportionately small.
- **Front claws** are 2-4 inches long, slightly curved, and good for digging. Claw marks are usually visible in tracks.

Observations of grizzly bears should be reported to the nearest Washington Department of Fish and Wildlife, U.S. Forest Service, or U.S. Fish and Wildlife Service office.

BLACK BEAR

- **Colors** include black, brown, blond, cinnamon, and rust. Black or brown, with a light brown snout is the most common coloration.
- Average **weight** in the west is 100-300 pounds, with males usually larger than females.
- **Height** is 2.5 - 3 feet at shoulder when standing on all fours and 5 feet standing upright.
- Rump is higher than front shoulders.
- Face **profile** is straight; muzzle is relatively long.
- **Ears** are long and prominent.
- **Front claws** are less than 2 inches long, curved, and good for climbing. Claw marks do not always show in tracks.



Washington
Department of
**FISH and
WILDLIFE**