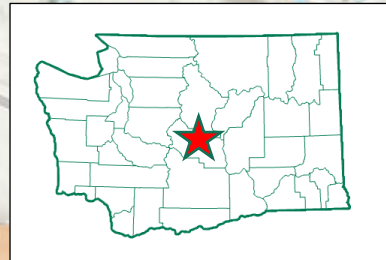
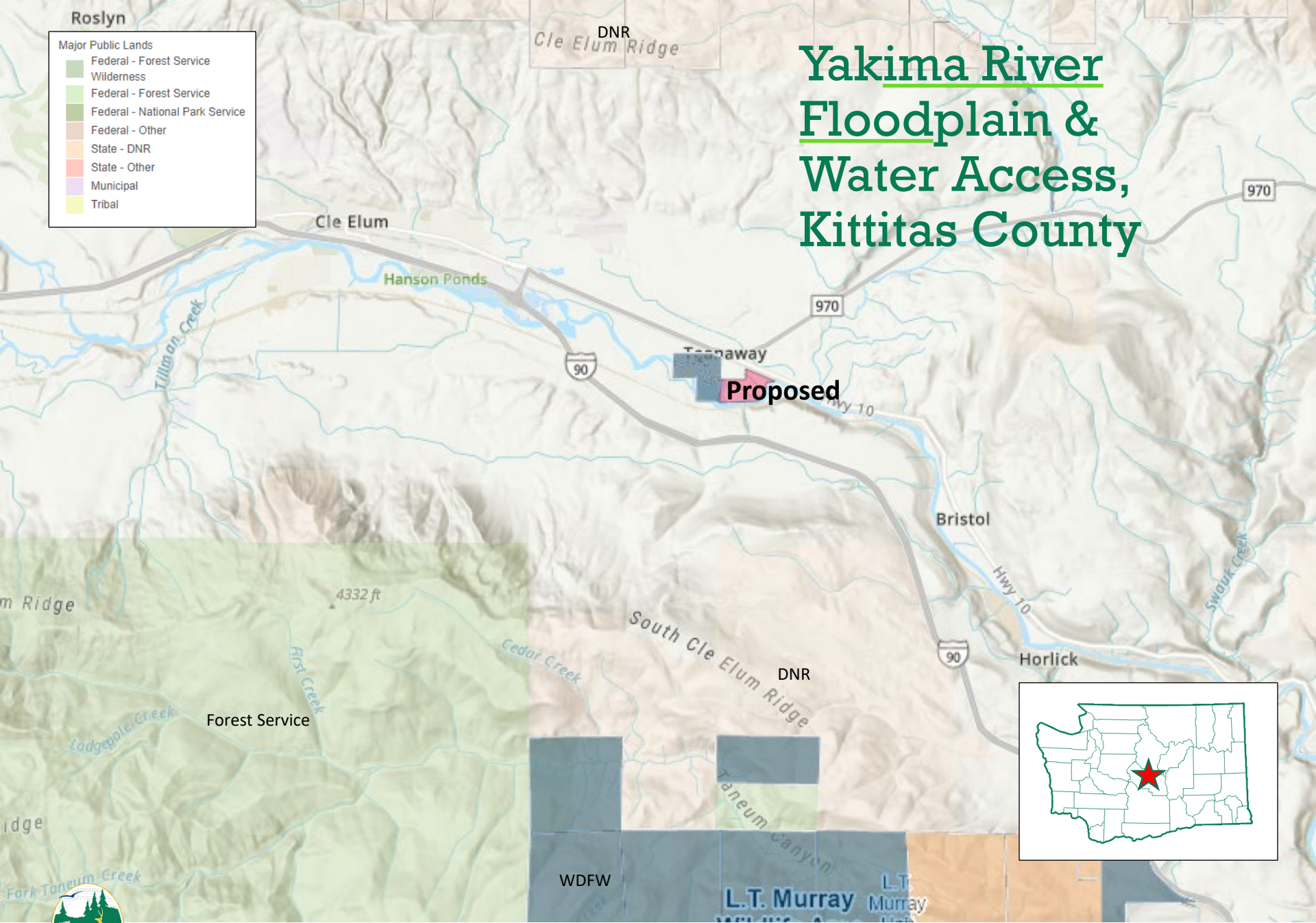


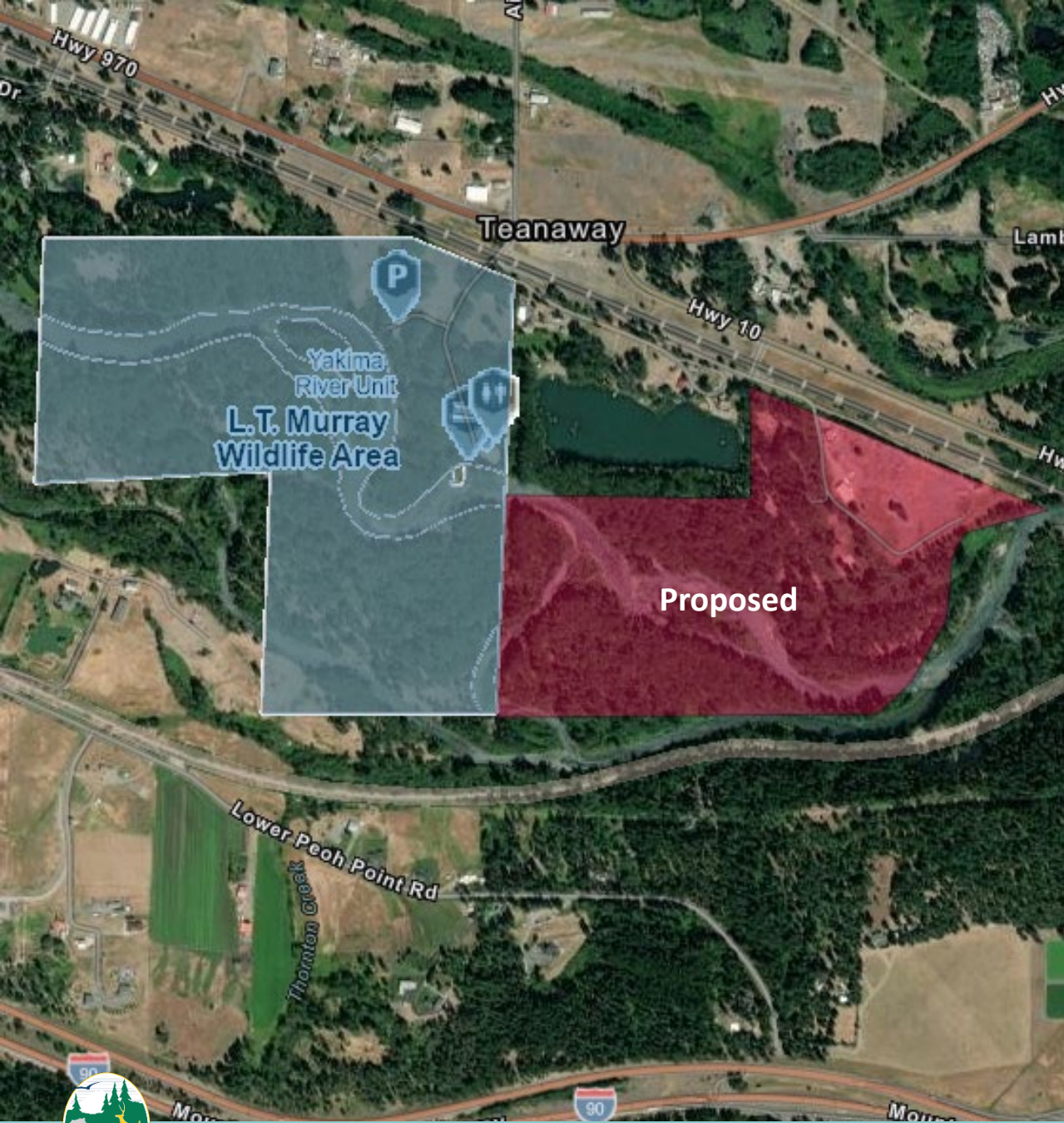
Roslyn

DNR
Cle Elum Ridge

Yakima River Floodplain & Water Access, Kittitas County

- Major Public Lands
- Federal - Forest Service Wilderness
 - Federal - Forest Service
 - Federal - National Park Service
 - Federal - Other
 - State - DNR
 - State - Other
 - Municipal
 - Tribal





Yakima River Floodplain & Water Access, Kittitas County

- This proposed acquisition project is for 89 acres adjacent to the Yakima River Unit of the LT Murray Wildlife Area.



Yakima River Floodplain & Water Access, Kittitas County

- This project would acquire about 89 acres to protect riverine, shoreline and riparian habitats.
- Identified for years as a priority for development of a river access site and new boat launch.
- Provides improved and safer river access in support of fishing and river recreation as well as several acres for wildlife viewing.

