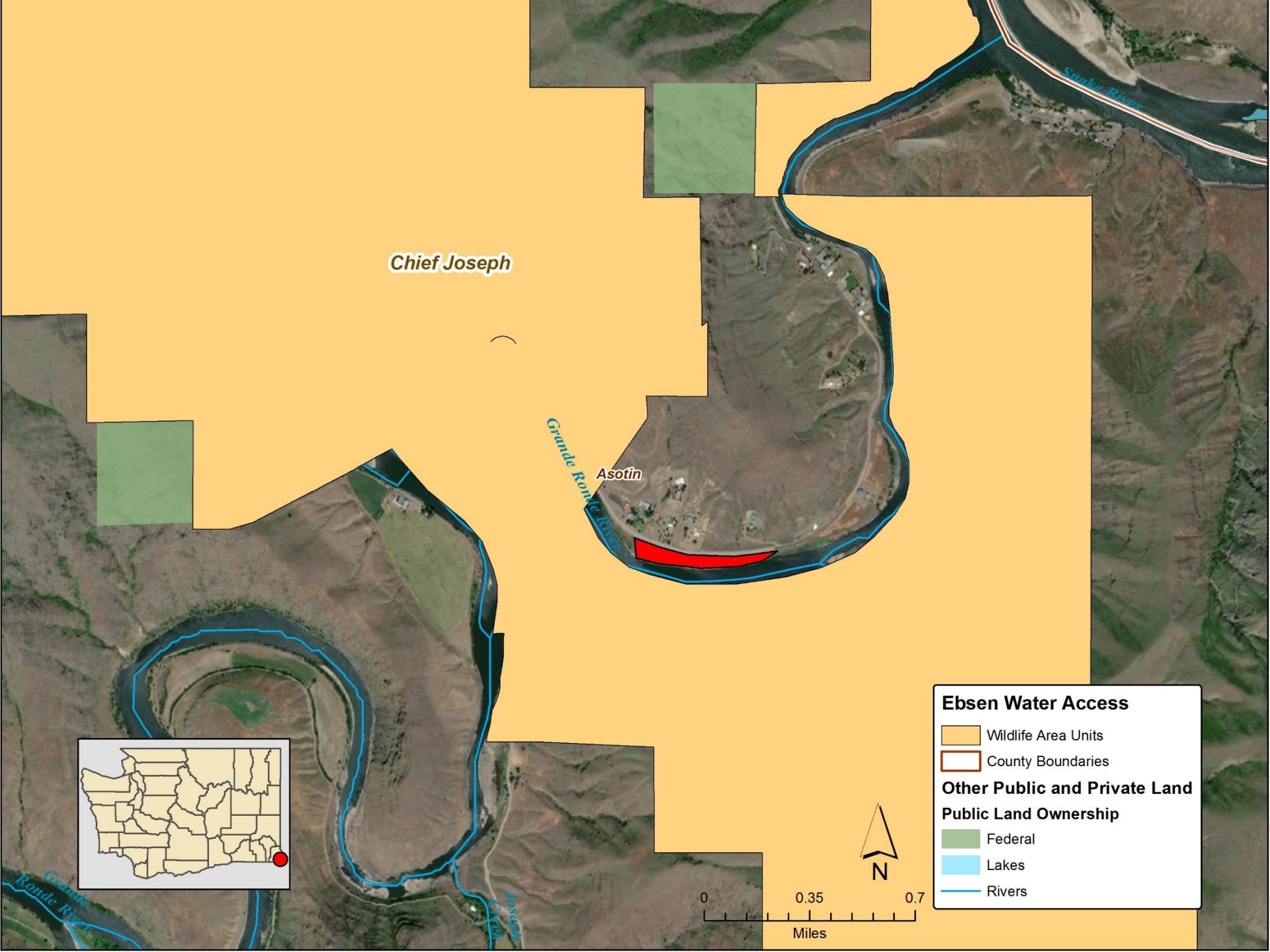




Project Highlights

- 7.3 acres
- Ensures public boating and fishing access to this portion of the Grande Ronde River
- Operated and maintained by Washington Department of Fish and Wildlife through an agreement with the property owner
- Property will be donated by the current owner
- Provides public access to the Grande Ronde River for fishing and wildlife viewing.
- Currently 5 designated camping sites on the property (3 with gravel parking pads), 2 ADA-accessible concrete vault toilets with blacktop parking spaces, and a gravel boat launch
- Supported by Wild Steelhead Coalition



Chief Joseph

Asotin

Grande Ronde River

SNAKE RIVER

Ebsen Water Access

- Wildlife Area Units
- County Boundaries

Other Public and Private Land

Public Land Ownership

- Federal
- Lakes
- Rivers

