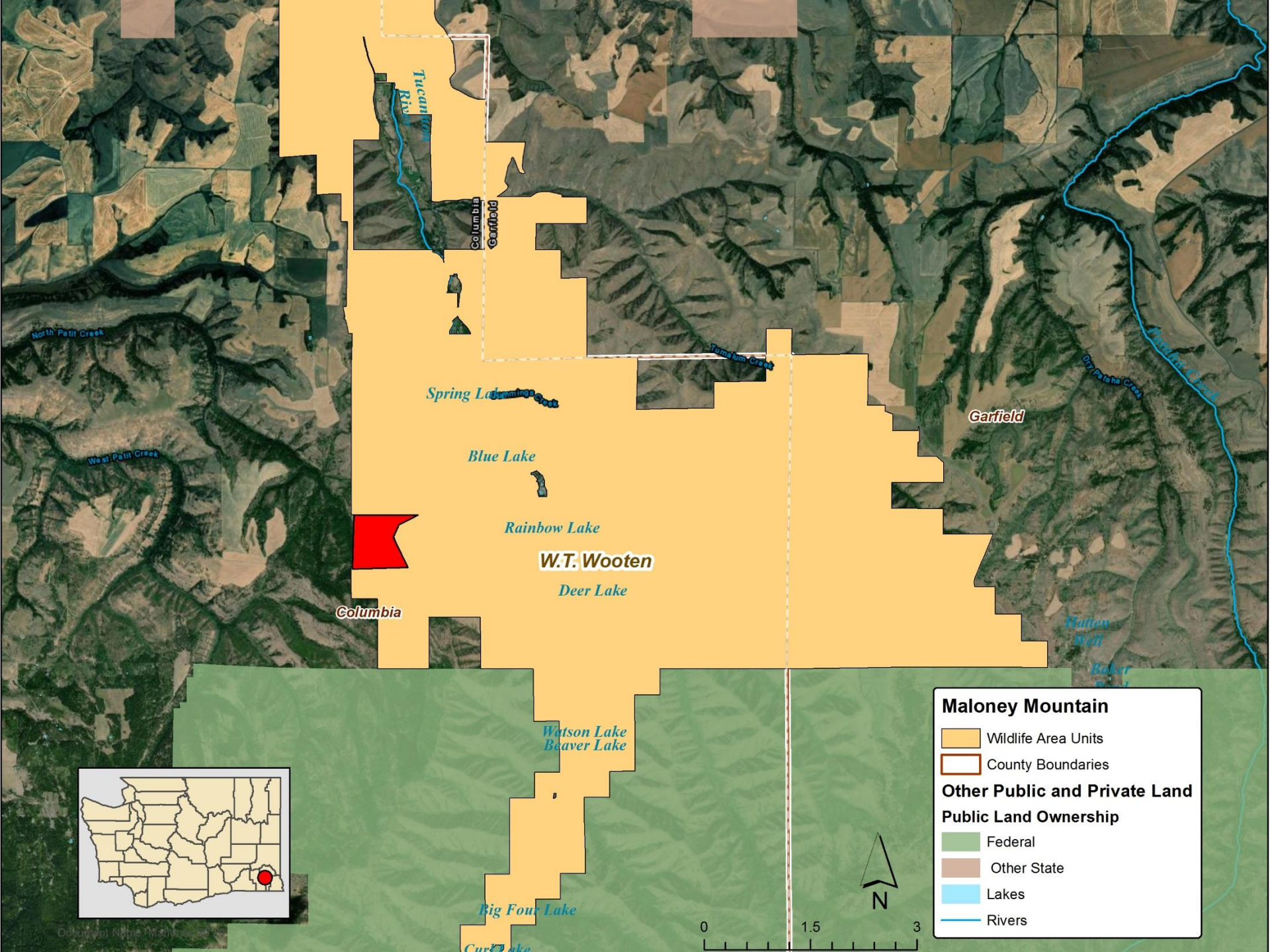




Project Highlights

- 145 acres
- Inholding in the W.T. Wooten Wildlife Area along the North Patit Creek
- Protects intact riparian habitat and associated wetland area
- Recreational opportunities would include hunting, wildlife viewing, birdwatching, hiking, and outdoor activities
- Incorporation of the property into the wildlife area would ensure long-term protection and enhanced management efficiencies for current WDFW lands



Maloney Mountain

- Wildlife Area Units
- County Boundaries

Other Public and Private Land

Public Land Ownership

- Federal
- Other State
- Lakes
- Rivers

