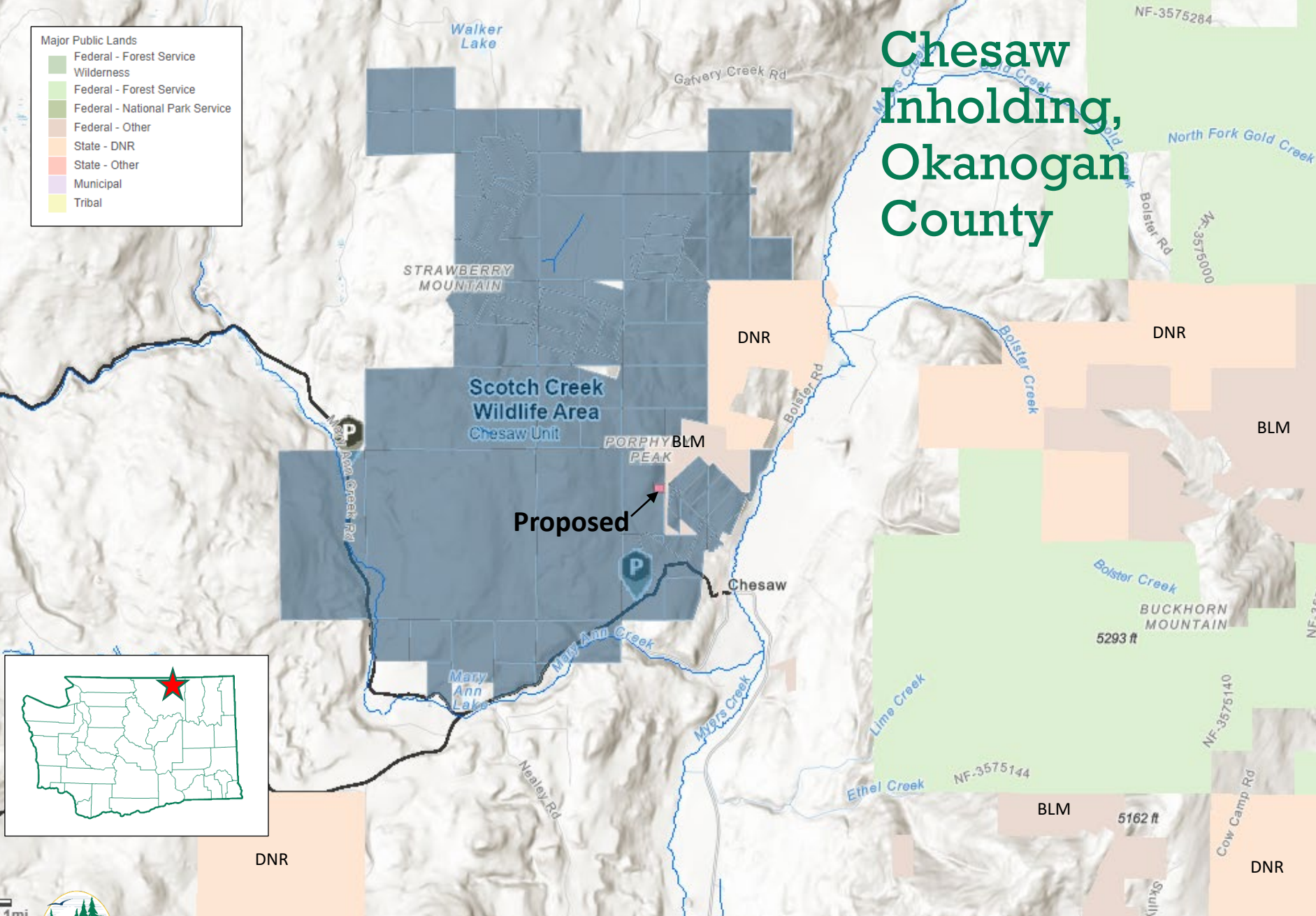


Chesaw Inholding, Okanogan County

Major Public Lands

- Federal - Forest Service Wilderness
- Federal - Forest Service
- Federal - National Park Service
- Federal - Other
- State - DNR
- State - Other
- Municipal
- Tribal



Proposed

Scotch Creek
Wildlife Area
Chesaw Unit

PORPHY BLM
PEAK

DNR

DNR

BLM

DNR

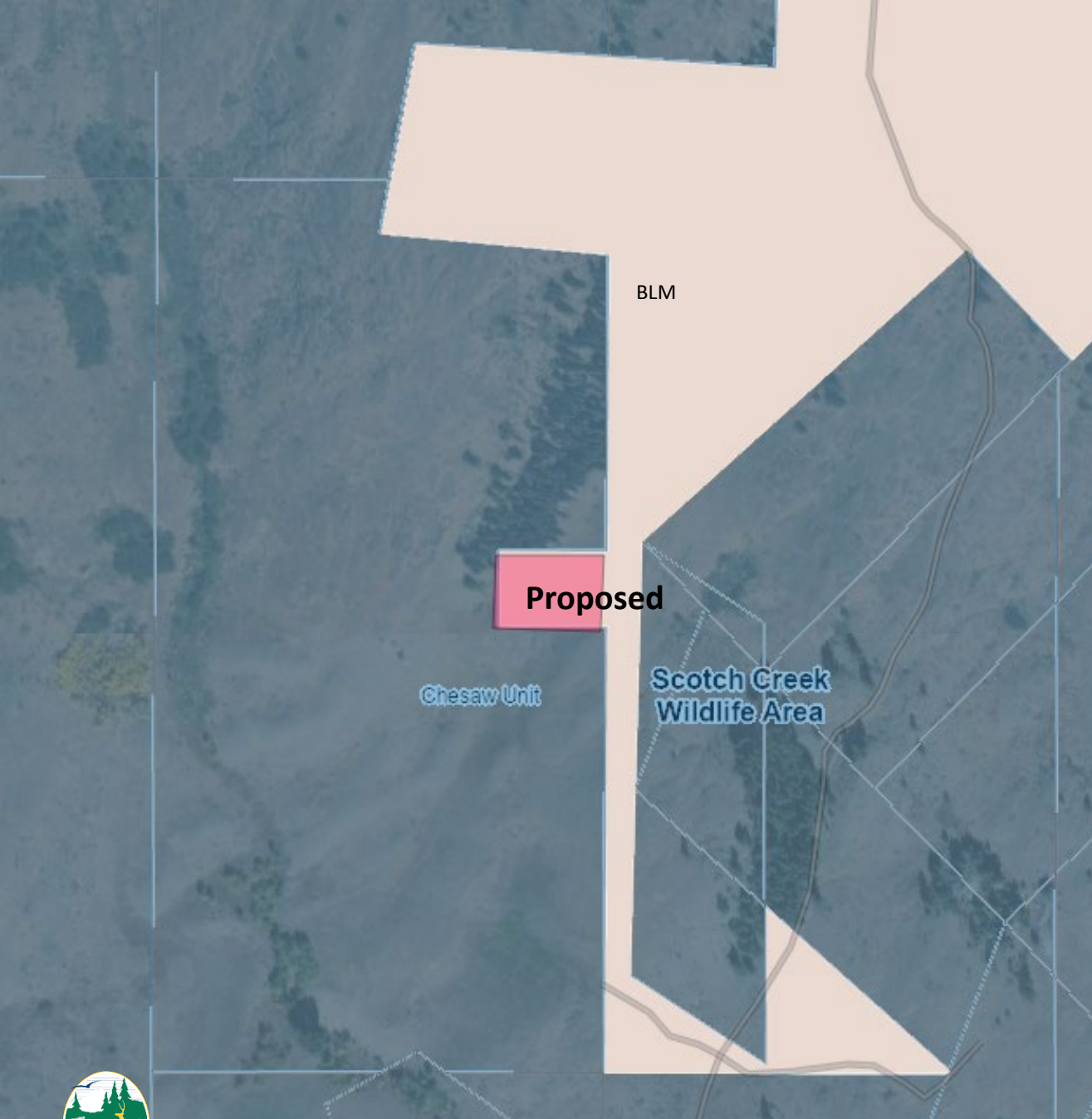
BLM

DNR



Chesaw Inholding, Okanogan County

- This project would acquire a 2-acre inholding surrounded almost entirely by the Chesaw Unit of Scotch Creek Wildlife Area.



Chesaw Inholding, Okanogan County

- The Chesaw project supports significant mule deer, elk and small mammal populations and provides great foraging opportunities for wolves and golden eagles. This site is located within a mile of a known sharp-tailed grouse lek.
- Recreational opportunities include hunting and wildlife viewing opportunities and will give the public the chance to experience high-quality shrubsteppe habitat in a less-crowded environment enhancing the experience for those who already enjoy other nearby public lands.

