



State of Washington  
Department of Fish and Wildlife

Mailing Address: 600 Capitol Way N, Olympia WA 98501-1091, (360) 902-2200, TDD (360) 902-2207  
Main Office Location: Natural Resources Building, 1111 Washington Street SE, Olympia WA

September 9, 2008

Dear Interested Citizen:

Below you will find a package of proposed changes to the 2009-2010 rules governing recreational fisheries for game fish, food fish, and shellfish. As a cost-saving measure, we have sent out postcards asking interested anglers to access the document at this web address: [http://wdfw.wa.gov/fish/regs/rule\\_proposals/index.htm](http://wdfw.wa.gov/fish/regs/rule_proposals/index.htm), Anglers may request a printed copy by calling (360) 902-2700 or obtain a direct e-mail of the information by sending a request to [sportfishing@dfw.wa.gov](mailto:sportfishing@dfw.wa.gov). We look forward to receiving your comments or ideas concerning the proposed changes enclosed with this notice. They may be sent in via e-mail to [preusimp@dfw.wa.gov](mailto:preusimp@dfw.wa.gov), by FAX to (360) 902-2155 (Attention: WDFW Rules Coordinator) or by regular mail to the WDFW Rules Coordinator at 600 Capitol Way N, Olympia WA 98501-1091. All written testimony must be received by November 8, 2008.

This regulation cycle represents a "minor cycle" in which proposals included represent those from department staff, and requested by the Fish and Wildlife Commission. Typically, minor cycle proposals are limited to conservation concerns, housekeeping issues, significant recreational opportunities, and requests or assignments from our Fish and Wildlife Commission or other managers.

The **public hearing** for these proposed rules will be held during the Fish and Wildlife Commission meeting on November 7 and 8 in Room 172 of the Natural Resources Building, 1111 Washington Street, Olympia WA 98504. The exact day and time when the Commission will hear this issue have not yet been determined. Please check the Department's website or call the WDFW Fish and Wildlife Commission office at (360) 902-2449 prior to the meeting for details. Verbal testimony on the proposals may be presented at the hearing. If you plan on attending the public hearing, you may submit written or oral testimony at that time.

There will also be four **public meetings** held around the state to encourage your input on these proposals. Department staff will be there to answer questions you may have on the proposals and listen to your comments and concerns. The meetings will be held at:

Cowlitz PUD  
961 12th Ave  
Longview, WA  
Wednesday, September 24 – 6-8pm

Sport Rule Proposals  
September 9, 2008  
Page 2

Mill Creek (Region 4) Office  
16018 Mill Creek Boulevard  
Mill Creek WA 98012  
Thursday September 25 – 6-9pm

Spokane (Region 1) Office  
2315 North Discovery Place  
Spokane Valley, WA 99216  
Tuesday September 30 – 6pm

Ephrata (Region 2) Office  
1550 Alder St NW  
Ephrata, WA 98823  
Wednesday October 1 – 6pm

At the February 2009 Fish and Wildlife Commission meeting, there will be an adoption hearing where these proposals: (a) may be adopted as proposed; (b) may be modified; or (c) may not be adopted. The effective date of any adoptions/modifications made at this meeting will be May 1, 2009, unless otherwise noted in specific proposals that are adopted. Permanent rules remain in effect until formally changed.

If you are a person with a disability and require accommodation for attendance, please contact Nancy Burkhart at (360) 902-2449. This publication is available in alternate formats upon advance request. Please contact (360) 902-2200 or TDD (360) 902-2207. Please allow seven working days to process request.

### **The Pre-Season Salmon Management Process**

Another process that shapes recreational fisheries in Washington waters is the North of Falcon process. The final product from this process is a management plan that coordinates recreational, commercial, treaty, and non-treaty salmon fisheries north of Cape Falcon, which includes both marine and freshwater areas in Washington State. Except where modified by a specific proposal, any salmon seasons listed in this document are the 2008-2009 seasons, and may be modified during the meetings described below. A series of public meetings are scheduled in March and April in conjunction with the Pacific Fishery Management Council's ocean season setting process. These meetings are attended by federal, state, and tribal managers, special interest groups and concerned citizens. You are welcome and encouraged to attend any of these meetings. To find out how you can participate in this process, call WDFW's Intergovernmental Resource Management Program at (360) 902-2819. Please contact Customer Service at (360) 902-2700 for details. **The recreational rules resulting from the 2009 North of Falcon process will be included in the 2009-2010 sportfishing pamphlet, due out May 1, 2009.**

### **Pacific Halibut**

The Pacific Fisheries Management Council, the National Marine Fisheries Service and the International Pacific Halibut Commission have the primary responsibility for regulating this fishery. Rules for the 2009 recreational fishery for halibut have not been established. Final

decision on these rules will be made in early 2009. WDFW will be hosting a public workshop on the proposed regulations. For more information on this process, please call (360) 249-4628, ext 254.

### **Columbia River Sturgeon**

Sturgeon in the lower Columbia River and tributaries downstream from Bonneville Dam are managed under 3-year sturgeon management agreements between Washington and Oregon. Sturgeon population status, fishing seasons, and regulations are reviewed each year. Columbia River Joint State Hearings are held at the end of each year to set seasons and regulations to keep sturgeon harvest within annual guidelines. These rules also maintain concurrent regulations between Washington and Oregon. There will be public hearings scheduled this fall as part of this process. For more information on this or other sturgeon rules, contact Brad James at WDFW's Vancouver office at (360) 906-6716.

Thank you for your interest in Washington's fisheries resources. If you no longer want to be part of the sportfishing rule change process, you can write to us at the Capitol Way address listed above, c/o Fish Program, and ask to be taken off the Sportfish Rule Development Mailing List. We have also set up a special mailbox at [Sportfishing@dfw.wa.gov](mailto:Sportfishing@dfw.wa.gov) that you can use to update your address or to add or delete yourself from our mailing list. If you received a postcard notice, but would rather receive a direct e-mail, it will save the Department some mailing costs. Please send an e-mail to the Sportfishing box, listing your regular mailing address and the e-mail address we can use instead. Also, please reserve the use of this mailbox only for sportfish mailing list business.

Sincerely,



Jo Wadsworth  
Acting Assistant Director  
Fish Program

Attachments

# 2009-2010 SPORTFISHING RULE CHANGE PROPOSALS

## TABLE OF CONTENTS

<b>CONSERVATION REGULATIONS .....</b>	<b>1</b>
#1. LIVE AQUATIC ANIMALS FOR BAIT IN FRESH WATER.....	1
#2. CHAMBERS CREEK .....	1
#3. SKAGIT RIVER .....	1
#4. LACAMAS, OLEQUA, ROCK AND SKAMOKAWA CREEKS .....	1
#5. OHOP CREEK .....	1
#6. MERCER CREEK .....	2
#7. WILSON CREEK .....	2
#8. YAKIMA RIVER.....	2
#9. COLUMBIA RIVER TROUT RULES- BUOY 10 LINE TO HWY 395 BRIDGE AT PASCO .....	3
#10. CLAM AND OYSTER BEACH SEASONS.....	3
<b>RECREATIONAL OPPORTUNITY .....</b>	<b>3</b>
#11. CASCADE RIVER.....	3
#12. GRAYS RIVER AND WF GRAYS.....	3
#13. SCOOTENEY RESERVOIR WALLEYE .....	4
<b>HOUSEKEEPING.....</b>	<b>4</b>
#14. MUNN LAKE (THURSTON CO).....	4
#15. NF TIETON RIVER .....	4
#16. RAILROAD POND .....	4
#17 WILLAPA RIVER MOUTH DEFINITION.....	4
#18. FISHER SLOUGH .....	5
#19. FISHING CONTEST RULES.....	5
<b>REQUESTS, ASSIGNMENTS.....</b>	<b>5</b>
#20. COLUMBIA RIVER SALMON AND STEELHEAD DAILY LIMIT- BUOY 10 LINE TO HWY 395 BRIDGE AT PASCO...5	5
#21. NEW MARINE PROTECTED AREA .....	5
#22. STATEWIDE OPENING DAY OF STREAM FISHING .....	6
#23. INCREASED TROUT LIMIT ON SELECTED LAKES.....	6
#24. ANTI-SNAGGING RULE.....	7
#25. SATURDAY OF MEMORIAL DAY WEEKEND STREAM OPENERS .....	9

# CONSERVATION REGULATIONS

## #1. Live Aquatic Animals for Bait in Fresh Water

**Proposal:** This proposal would make it unlawful to use or possess and use live aquatic animals for bait in fresh water, with the exception that anglers may possess live sand shrimp for bait.

**Explanation:** It is currently unlawful to use live *fish* as bait while fishing for game fish. However, other species, such as leeches, crayfish, Asian freshwater shrimp, and fairy shrimp are also used live as bait. There is significant potential for the establishment of new populations of these or other non-native species, that may compete with native animals for space and food, as well as the possibility of the transfer of aquatic diseases due to anglers' release of these baits into the waters of the State.

## #2. Chambers Creek

**Proposal:** This proposal would close Chambers Creek (Pierce Co) to the retention of trout, and add selective gear rules.

**Explanation:** Current rules allow the use of bait and the retention of up to two trout over 14" in length. Anglers are likely harvesting juvenile steelhead during the trout season. Last year the creek season was moved to begin July 1 instead of the statewide standard of June 1 for protection of juvenile Chinook salmon. This closure will also provide additional protection to these fish.

## #3. Skagit River

**Proposal:** This proposal would allow anglers to retain up to two hatchery steelhead during the March 16-April 30 catch-and-release fishery from the Dalles Bridge at Concrete to the mouth of the Cascade River. All other rules remain unchanged.

**Explanation:** This change would make the regulations for the catch-and-release fisheries on the Sauk and Skagit Rivers consistent by allowing anglers to harvest up to two hatchery steelhead. Removal of hatchery steelhead from the system is also consistent with Hatchery Scientific Review Group recommendations to trap or remove as many hatchery steelhead as possible to lessen the possibility of their spawning with wild fish.

## #4. Lacamas, Olequa, Rock and Skamokawa Creeks

**Proposal:** This proposal would standardize stream seasons to June 1 – October 31 in Lacamas Creek (Lewis Co), Olequa Creek (Lewis Co), Rock Creek (Skamania Co) downstream of falls, and Skamokawa Creek (Wahkiakum Co) from mouth (Hwy. 4 Bridge) to the forks below Oatfield and Middle Valley Road. It would also standardize the rules in these waters to be: trout - catch-and-release except up to two hatchery steelhead may be retained in all the above areas. (NOTE – opening date would move to the first Saturday in June if Proposal #22 is adopted).

**Explanation:** Hatchery steelhead are not released in these areas, so an extended season is not justified. This proposal also protects wild steelhead, coho and chum that could be found in these systems during the winter seasons. Changing Skamokawa Creek from its current November 1 start date to June 1 may allow anglers to harvest some stray summer steelhead from the Elochoman River.

## #5. Ohop Creek

**Proposal:** This proposal would change the opening date for Ohop Creek (Pierce Co) from June 1 to July 1 and make the fishery catch-and-release only except up to 2 hatchery steelhead may be retained with selective gear rules.

**Explanation:** This proposal is needed to protect ESA listed steelhead smolts and the resident portion of the rainbow trout population. The new Mashel-Ohop State Park proposed for this region is expected to be

heavily used. Approximately 600,000 visitors are anticipated to visit the facility. From limited sampling, the trout population in Ohop Creek appears to be very small and to consist mostly of steelhead juveniles. This small population cannot support fishing related mortality and should be protected. The Ohop is a tributary to the Nisqually River, whose escapement goal of 2,000 spawning steelhead has not been met since 1992 and has been below 500 since 2000.

## **#6. Mercer Creek**

**Proposal:** Mercer Creek (Kittitas Co) within the Ellensburg city limits currently has a daily limit of 5 trout with no minimum size. This proposal would restore the statewide daily limit of 2 trout, with an 8” minimum size. This portion of the creek will retain its “juveniles only” designation. (NOTE – opening date would move to the first Saturday in June if Proposal #22 is adopted).

**Explanation:** Until recently, WDFW and the Ellensburg Kiwanis Club had a cooperative ALEA project to rear and release hatchery rainbow trout into Mercer (and Wilson Cr.) with the Ellensburg city limits. The club has discontinued this ALEA project and is no longer releasing fish. The no minimum size, 5 trout daily limit was appropriate when hatchery trout were being released for juvenile anglers to catch. Now that the fishery relies on wild natural production, the statewide minimum size and daily limit are appropriate. The wild trout population cannot sustain liberal, hatchery-based harvest rules.

## **#7. Wilson Creek**

**Proposal:** The two branches of Wilson Creek within the Ellensburg city limits currently have a daily limit of 5 trout with no minimum size, and a year-round season. This proposal will restore the statewide standard stream season of June 1 – October 31 and the standard trout daily limit of 2 fish, 8” minimum size. These two portions of the creek will retain their “juveniles only” designation. (NOTE – opening date would move to the first Saturday in June if Proposal #22 is adopted).

**Explanation:** Until recently, WDFW and the Ellensburg Kiwanis Club had a cooperative ALEA project to rear and release hatchery rainbow trout into Wilson (and Mercer Cr.) with the Ellensburg city limits. The club has discontinued this ALEA project and is no longer releasing fish. The no minimum size, 5 trout daily limit was appropriate when hatchery trout were being released for juvenile anglers to catch. Now that the fishery relies on wild natural production, the statewide minimum size and daily limit are appropriate. The wild trout population cannot sustain liberal, hatchery-based harvest rules. This rule also standardizes the seasons for both “juvenile only” fisheries within the Ellensburg city limits. The winter closure is particularly important now that recent improvements in fish passage spearheaded by the Yakama Nation have opened Wilson Creek within the city limits to anadromous fish utilization, including ESA-listed steelhead, spring Chinook and coho salmon.

## **#8. Yakima River**

**Proposal:** This proposal changes the year-round season in the Yakima River from Highway 223 Bridge at Granger to 3500 feet below Roza Dam to the statewide standard June 1- October 31 and adds selective gear rules from Sunnyside Dam to 3500 feet below Roza Dam. From Highway 223 Bridge to 400 feet below Roza Dam, it adds a whitefish only season with whitefish gear rules December 1 – March 31. (NOTE – opening date would move to the first Saturday in June if Proposal #22 is adopted).

**Explanation:** The year-round season and absence of selective gear rules above Sunnyside Dam has created a legal “loophole” that allows anglers to fish for ESA-listed steelhead using bait and lures with multiple, barbed hooks. During the winter months, steelhead congregate and hold in a number of deep pools in this area---particularly at the confluence of the Naches and Yakima rivers and in other pools in the Roza Dam – Union Gap reach. WDFW Enforcement has issued a number of citations for illegal retention of steelhead over the past several years and issued warnings to anglers who are using heavy “steelhead gear” rather than light whitefish gear. The addition of selective gear rules above Sunnyside Dam provides terminal gear uniformity with the Naches River and the upper Yakima River above Roza Dam.

## **#9. Columbia River Trout Rules- Buoy 10 Line to Hwy 395 Bridge at Pasco**

**Proposal:** This proposal would close this area to the retention of trout other than steelhead, except up to 2 hatchery cutthroat (minimum size 12") could be retained from the Rocky Point/Tongue Point line to the I-5 Bridge.

**Explanation:** The 2 hatchery cutthroat daily limit from the Rocky Point/Tongue Point line to the I-5 Bridge provides opportunity for anglers to harvest Cowlitz Hatchery sea-run cutthroat trout, while also providing protection for steelhead smolts and jacks (including wild fish) between 12" and 20" that can be retained in the entire area under the existing regulation.

## **#10. Clam and Oyster Beach Seasons**

Proposals for season changes on clam and oyster beaches are not available at this time because current seasons are still under way and harvest numbers are not complete. These proposals will be available later this winter, and will be placed on the Department's web site at that time.

# **RECREATIONAL OPPORTUNITY**

## **#11. Cascade River**

**Proposal:** Currently, the game fish fishery opens October 1 in the Cascade River from the mouth to the Rockport –Cascade Road Bridge. This proposal would allow anglers to retain game fish (including Dolly Varden/bull trout) during the spring Chinook fishery in this area from June 1 to July 15, and reopen for game fish on Sept 16 with the coho fishery. The February 28 closing date would remain unchanged.

**Explanation:** This change would make the rules in the Cascade River consistent with the Skagit River during open seasons for salmon and would allow anglers to harvest Dolly Varden/bull trout and other game fish during periods on the Cascade River when salmon fisheries are open. From spring Chinook creel data, we estimate that very few (0-2) hatchery steelhead and less than 10 bull trout would be retained yearly.

## **#12. Grays River and WF Grays**

**Proposal 1:** This proposal would open the river to the catch-and-release only except up to two hatchery steelhead may be retained season June 1 (instead of September 1) in the Grays River (Wahkiakum Co) from the mouth to the mouth of the South Fork. The closing date of October 15 and all other rules remain unchanged. (NOTE – opening date would move to the first Saturday in June if Proposal #22 is adopted).

**Proposal 2:** This proposal would open the game fish season June 1 - October 15 (instead of August 31) and make the fishery catch-and-release except up to 2 hatchery steelhead may be retained in the West Fork Grays River. The additional season in the mainstem above Hwy 4 to the South Fork and in the West Fork would open December 1 (instead of December 15) and run through March 15. This season would remain catch-and-release except up to 2 hatchery steelhead may be retained. (NOTE – opening date of the early fishery would move to the first Saturday in June if Proposal #22 is adopted).

**Explanation 1&2:** This rule will standardize the June 1 – Oct 15 steelhead and salmon fisheries across all sections of the mainstem Grays and WF Grays, and provide additional opportunity to harvest hatchery winter steelhead and stray hatchery summer steelhead, while continuing to protect wild winter-run steelhead, and ESA listed chum, coho, and fall Chinook salmon. The change from a December 15 to a December 1 steelhead opener on the mainstem (above Hwy 4 to SF) and the WF Grays provides increased opportunity to harvest hatchery winter-steelhead. The existing closure of this area from October 15 – December 15 was originally implemented to protect the ESA listed chum salmon population. Increased monitoring of the chum population over the past several years has indicated that the majority of spawning is typically complete by November 25.

### **#13. Scootney Reservoir Walleye**

**Proposal:** This proposal would change the rules for walleye on Scootney Reservoir (Franklin Co) from the statewide standard minimum size of 16", to a minimum size of 12". The daily limit of 5, and the restriction of only 1 over 22" may be retained will remain unchanged.

**Explanation:** Scootney Reservoir is a 590 acre water with large inflow and outflow of irrigation waters. Walleye grow fast in the productive waters and upon reaching sexual maturity at approximately 16" in length, the majority leave the reservoir via the irrigation canal outlet to spawn. Most of these spawners are unable to return to the reservoir and are no longer available to anglers in the Reservoir. This loss of a major portion of the walleye over 16" combined with the current walleye "16 inch minimum size" rule, greatly limits walleye harvest opportunities for anglers. Annual fall walleye surveys on the reservoir indicate large numbers of 12"-16" fish present. The proposed reduction to a 12" minimum size would allow walleye 12"-16" in length to become available for harvest and increase Scootney Reservoir's attraction to walleye anglers.

## **HOUSEKEEPING**

Housekeeping rules are mostly rules that have little or no effect on what anglers read in the fishing pamphlet. Some simply clear up redundant statements in the Washington Administrative Code (WAC) language and have no effect on the fishery. Others are small changes needed to make the WAC language reflect the management intent for a particular fishery.

### **#14. Munn Lake (Thurston Co)**

**Proposal:** Clarify WAC language on the ending date for the catch-and-release season.

**Explanation:** Last year an additional season was adopted for Munn Lake Thurston Co). This was a catch-and-release season with selective gear rules directly before the lake's regular Opening Day retention fishery. Since Opening Day of fishing season in the last Saturday in April, the catch-and-release season should end the Friday before that date. This proposal is necessary to specify that the catch-and-release season ends the Friday before the last Saturday in April, not the last Friday in April as previously written.

### **#15. NF Tieton River**

**Proposal:** This proposal would clarify the closed waters area to: Clear Lake spillway channel and the NF Tieton River within 400' of Clear Lake Dam and change the season for the entire river, including that portion of the river that flows through the Rimrock Reservoir dry lakebed, to June 1 through August 15.

**Explanation:** The closed water clarification is a "housekeeping" issue to correct an error caused by improper punctuation use in the WAC revision adopted last year. The August 15 closure above Clear Lake provides protection to a population of bull trout in that area.

### **#16. Railroad Pond**

**Proposal:** This proposal would change the rules for Railroad Pond (Franklin Co) from selective gear rules and a two trout daily limit to statewide rules (daily limit 5 trout, no gear restriction).

**Explanation:** Railroad Pond is privately owned. WDFW has been unable to reach a mutually acceptable public access/use agreement with the landowner. WDFW terminated the stocking of large triploid rainbow trout and rainbow trout fry in spring 2008. The new 2008-09 fishing rules pamphlet retains the special rule until it is formally changed, but a note in the pamphlet informs the public that there is no public access and no trout stocking. If this proposal is approved, the listing for Railroad Pond would no longer appear in the pamphlet.

### **#17 Willapa River Mouth Definition**

**Proposal:** This proposal would change the reference to the boat launch defining the mouth of the Willapa River to the City of South Bend Boat Launch.

**Explanation:** Currently the boat launch is incorrectly identified as a WDFW launch in the pamphlet, and is not specifically identified in the WAC.

## **#18. Fisher Slough**

**Proposal:** This proposal would change the rules in the lower portion of Fisher Slough (Skagit County) from a year-round season to a June 1 to October 31 season. (NOTE – opening date would move to 1<sup>st</sup> Saturday in June if Proposal #22 is adopted).

**Explanation:** At one time there was a channel from the Skagit River that entered Fisher Slough immediately below the highway. Because of this it was not clear where the real “mouth” of the slough was, so the highway 530 bridge was used to clarify the boundary. In 1994 the road became the Pioneer Highway confusing the picture, and the channel from the Skagit River that once entered the slough just below the bridge no longer exists. The mouth is clearly definable now. There will be no loss of opportunity due to this change because there is no fishing access below the bridge.

## **#19. Fishing Contest Rules**

**Proposal:** This proposal would change the date for submission of fishing contest permit applications for the following year from November 1 of each year to July 1 of each year. The proposal would also allow contests to last 4 consecutive days instead of 3.

**Explanation:** This proposal allows organizations that are scheduling bass and walleye contests in Washington State to have enough time after the conflict resolution meeting to make any necessary schedule adjustments and have their tournaments schedule(s) sent to the printer for publishing and advertising. After July 1, permits will need to be submitted not less than 30 days prior to the date of the proposed contest. The longer duration allows greater participation by bass and walleye anglers and angling organizations.

# **REQUESTS, ASSIGNMENTS**

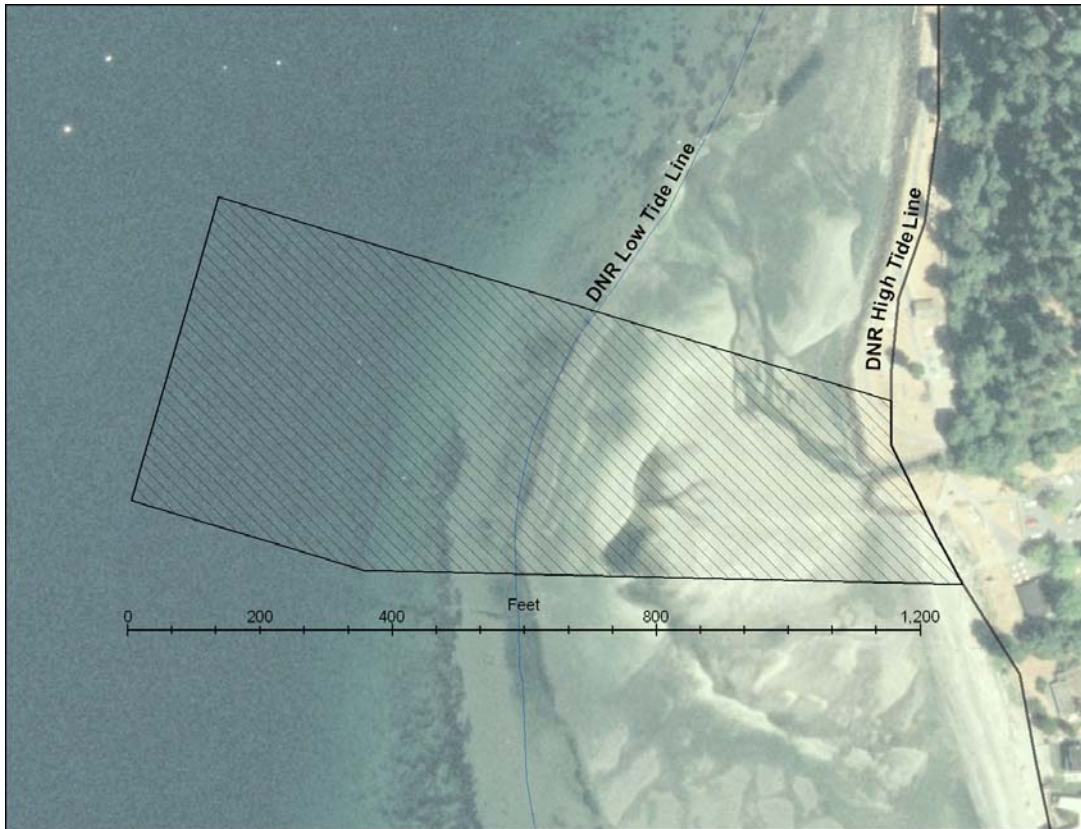
## **#20. Columbia River Salmon and Steelhead Daily Limit- Buoy 10 Line to Hwy 395 Bridge at Pasco**

**Proposal:** This proposal would combine daily limit for salmon and steelhead in this part of the Columbia River as follows: Daily limit 6. Up to 2 may be adult salmon or hatchery steelhead or one of each. Salmon minimum size 12”; steelhead minimum size 20”.

**Explanation:** Washington fishing rules for the Columbia River in this area currently contain separate daily limits for salmon and steelhead. Oregon rules in the same waters have a combined daily limit for salmon and steelhead. Our enforcement officers have asked that, whenever possible, we match our rules to Oregon in these waters. This proposal could also help spread the same amount of catch among more anglers, by closing a “loophole” where an angler may continue to fish for steelhead after retaining a limit of salmon and vice versa.

## **#21. New Marine Protected Area**

**Proposal:** This proposal, developed in conjunction with staff of the State Parks and Recreation Commission (Parks), would create a new Marine Protected Area near Saltwater State Park in southern King County. The area would be closed to all recreational fishing for fish (including salmon and bottomfish), shellfish, and unclassified marine fish and invertebrates year-round. NOTE - clam and oyster harvest is currently closed in the entire park. Parks will mark the boundaries of the area with buoys in the water and pilings on shore. The proposed area would encompass about 300 feet of the park’s 1445 feet of shoreline, and would run out about 1200 feet from the high tide line. The map below shows the area of the proposed closure.



**Explanation:** The State Parks and Recreation Commission is creating a new artificial reef at Saltwater State Park. It will reach from about -10 feet to -65 feet in depth. The purpose of the reef is to enhance the population of bottomfish in the area, and provide an improved recreational experience for divers. Although this proposal would close a small area (see map above) to fishing for all species from the shore or from a boat, the trade-off would be a healthy and diverse population of bottomfish and other reef organisms that could provide a strong population base for these species, allowing them to spread to areas outside of the preserve. It will also add an extra measure of safety for divers in what is expected to become a heavily used site, similar to the popular Edmonds Underwater Park.

## #22. Statewide Opening Day of Stream Fishing

**Proposal:** The Fish and Wildlife Commission requested this proposal be brought forward for public review and comment. It would change the statewide opening day for stream fishing from June 1 to the 1<sup>st</sup> Saturday in June. (NOTE: - streams with opening dates other than the current statewide June 1 are not affected by this proposal).

**Explanation:** The Fish and Wildlife Commission has asked staff to look at ways to open more fisheries on weekend days, allowing the majority of anglers a better chance to participate. Changing the opening day from June 1 to the 1<sup>st</sup> Saturday in June will also allow provide up to 6 additional days of protection for any late-migrating smolts that may still be present.

## #23. Increased Trout Limit on Selected Lakes

**Proposal:** The Fish and Wildlife Commission requested this proposal be brought forward for public review and comment. It would increase the daily limit for trout from 5 fish to 8 fish on selected lakes. These lakes are proposed to be Park and Blue lakes in Grant County, Williams and West Medical lakes in Spokane County, and Sprague Lake (Adams/Lincoln Co).

**Explanation:** These lakes are proposed to be part of a pilot program designed to stimulate angling participation. The lakes proposed have recently been rehabilitated and are planted with fry. They should have strong trout fisheries in the near future. Sprague Lake, which was rehabilitated last fall, will eventually

become a warmwater fishery, but has been planted with trout for anglers to enjoy while the warmwater fish populations rebuild.

## #24. Anti-Snagging Rule

**Proposal:** This proposal would replace the current non-buoyant lure restriction with a new anti-snagging rule. The anti-snagging rule requires the use of single hooks on all gear (floating or sinking, with or without bait), and requires that all salmon and steelhead be hooked in the mouth in areas where it is in effect. Other game fish may be hooked in the mouth or on the head.

**Explanation:** The non-buoyant lure rule is, by far, the rule that generates the most questions to our customer service staff as well as to our enforcement officers. It is complicated, with different requirements for lures that sink or float. The proposed anti-snagging rule would apply to all species, but would only be used in areas where the non-buoyant lure rule is currently in place (see list and map below), with one exception. In the mainstem Columbia River, the new rule is proposed to be in effect from Bonneville Dam to McNary Dam. While in all other areas the rule would apply to all species fished for, in this part of the mainstem Columbia River it would only apply to anglers fishing for salmon and steelhead. This will address the major concern we heard from anglers to our proposal last year by allowing warmwater anglers to continue to use gear with multiple hooks in this area, while still addressing the snagging problem for steelhead and salmon. It would also be similar to the rule already in effect in Oregon.



### Areas with Nonbuoyant Lure Rule Sorted by County

Water Body	County	Area	Time
Chelan River	Chelan	Railroad Bridge to Chelan PUD barrier	5/15-8/31
Washougal River	Clark	Upstream of bridge to Salmon Falls	7/1-10/31
Washougal River	Clark	Mouth to Mount Norway Bridge	7/1-10/31
North Fork Lewis River	Clark/Cowlitz	Colvin Creek - Merwin Dam	4/1-9/30
North Fork Lewis River	Clark/Cowlitz	Johnson Creek-Colvin Creek	4/1-11/30
Kalama River	Cowlitz	Mouth to lower intake at hatchery	4/1-10/31
Toutle River, North Fork	Cowlitz	Confluence with South Fork to mouth of Green River	9/1-10/15
Green River	Cowlitz	Mouth to 400' below rack	9/1-10/31
Cowlitz River	Cowlitz/Lewis	Mill Creek-Barrier Dam	4/1-10/31
Columbia River	Douglas	Rocky Reach Dam - Turtle Rock	year-round
Columbia River	Franklin	Ringold bank fishery - spring Chinook	5/1-6/15

EF Humptulips	Grays Harbor	Mouth to concrete bridge on Forest Service Road	8/16-11/30
North River	Grays Harbor/Pacific	Salmon Creek to Falls River	8/16-11/30
Satsop River Middle Fork and West Fork	Grays Harbor	Mouths to Cougar Smith Road	8/16- 11/30
Satsop River Middle Fork and West Fork	Grays Harbor	Upstream of Cougar Smith Road	8/16-10/31
Van Winkle Creek	Grays Harbor	Mouth to hatchery outlet	8/16-11/30
West Fork Humptulips	Grays Harbor	Mouth to Donkey Creek	8/16-11/30
Green/Duwamish River	King	1st Ave Br- Old Hwy 99	9/16-11/30
Green/Duwamish River	King	Old Hwy 99-I-405	9/1- 11/30
Green/Duwamish River	King	I-405 - 277th Bridge	10/1-11/30
Green/Duwamish River	King	277 Bridge- Auburn-Black Diamond Road	10/16-11/30
Tokul Creek	King	Mouth to Fish Hatchery Road Bridge	12/1- 2/28
Tokul Creek	King	Bridge to Railroad trestle	1/15-2/28
Klickitat River	Klickitat	Mouth to Fisher Hill Bridge	4/1-5/31 & 8/1- 1/31.
Columbia River	Klickitat/Skamania	Bonneville Dam- end of contiguous waters with Oregon above McNary Dam	8/1-10/15
White Salmon River	Klickitat/Skamania	Markers to powerhouse	8/1-12/31
Blue Creek	Lewis	Mouth to rearing pond	12/1-1/31
Mill Creek	Lewis	Mouth to hatchery road crossing culvert	12/1-12/31
Skokomish River	Mason	Mouth to Hwy 4 Bridge	8/1- 11/30
Okanogan River	Okanogan	Mouth to Hwy 97 Bridge	7/1- 10/15
Bear River	Pacific	All	8/16-11/30
Naselle River	Pacific	Hwy 101 Bridge Hwy 4 Bridge	8/16-11/30
Naselle River	Pacific	Crown Mainline Bridge to North Fork	8/16 – 11/30
Naselle River, South Fork	Pacific	Mouth to Bear Creek	8/16-11/30
Nemah River, Middle	Pacific	Upstream of DNR Bridge on Middle Nemah A-line Road	8/16-11/30
Nemah River, North	Pacific	Upstream of bridge on dead-end lower Nemah Road	8/16- 11/30
Palix River	Pacific	Upstream of confluence of South and Middle Forks and all forks	8/16-11/30
Willapa River	Pacific	Fork Creek upstream	8/16- 10/31
Willapa River SF	Pacific	All	8/16- 11/30
Carbon River	Pierce	Mouth to Voight Creek	9/1-11/30
Chambers Creek	Pierce	All	7/1-11/15
Chambers Creek Estuary	Pierce	Downstream of markers below Railroad Bridge.	7/1-11/15
Nisqually River	Pierce	Mouth to military tank crossing bridge	8/1- 11/30
Nisqually River	Pierce	Military tank crossing bridge to 400 feet below LaGrande Powerhouse	8/1 – 10/31
Puyallup River	Pierce	11th St Bridge - Carbon River	8/16-11/30
White (Stuck) River	Pierce	Mouth to R Street Bridge	10/1-11/30
White (Stuck) River	Pierce	R-Street Bridge upstream	10/1- 10/31
Baker River	Skagit	Mouth to Highway 20 Bridge	9/1-10/31 and 6/14-7/31
Baker River	Skagit	Highway 20 Bridge to markers	6/14-7/31
Cascade River	Skagit	Mouth to Rockport-Cascade Road Bridge	6/1-7/15 and 9/16-11/30
Samish River	Skagit/Whatcom	Mouth to Hickson Bridge	8/1 - 12/31
Skagit River	Skagit/Whatcom	Hwy 336 at Mount Vernon to Dalles Bridge at Concrete	7/1- 11/30
Skagit River	Skagit/Whatcom	Dalles Bridge to Highway 530 Bridge at Rockport	6/14 - 11/30

Skagit River	Skagit/Whatcom	Rockport Bridge - Cascade River	6/1- 11/30
Drano Lake	Skamania	Little White Salmon Fish Hatchery markers to Hwy 14 Bridge	3/16-6/30 and 8/1-12/31
Wind River	Skamania	Mouth to Shipherd Falls	3/16- 6/30 and 8/110/31
Wind River	Skamania	Upstream of Shipherd Falls	5/1-6/30
North Fork Skykomish River	Snohomish	Mouth to Deer Falls	8/1 - 11/30
North Fork Stillaguamish River	Snohomish	Mouth to Swede Heaven Bridge	8/1 - 11/30
South Fork Skykomish River	Snohomish	Mouth to Sunset Falls Fishway	8/1 - 11/30
South Fork Stillaguamish River	Snohomish	All	8/1 - 11/30
Skykomish River	Snohomish	Mouth to Lewis Street Bridge in Monroe	8/1 - 11/30
Skykomish River	Snohomish	Lewis Street Bridge - Wallace River	6/1 - 11/30
Skykomish River	Snohomish	Wallace River to forks	8/1 - 11/30
Snohomish River	Snohomish	Mouth to confluence	8/1 - 11/30
Stillaguamish River	Snohomish	Downstream of Marine Drive	8/1 - 11/30
Capitol Lake	Thurston	Outlet to 400' below lowest fish ladder	8/1-11/30
Deschutes River	Thurston	US Highway 99 Bridge - Henderson Boulevard	8/1 – 11/30
Kennedy Creek	Thurston	Mouth to 400' below falls	10/1-12/31
McAllister Creek	Thurston	All	8/1-11/30
McLane Creek	Thurston	All	8/1-10/31
Elochoman River	Wahkiakum	Mouth to West Fork	9/1-10/31
Grays River	Wahkiakum	Mouth to mouth of South Fork	9/1-10/15
West Fork Grays River	Wahkiakum	Mouth to hatchery intake footbridge	9/1-10/15
Nooksack River	Whatcom	Lummi Boundary to school barn	6/1 - 11/30
Nooksack River	Whatcom	School barn to confluence of North Fork and South Fork	10/1-11/30
Nooksack River, North Fork	Whatcom	Mouth to Maple Creek	6/1- 11/30
Whatcom Creek	Whatcom	Mouth to Whatcom Falls Park Bridge	8/1- 12/31
Whatcom Creek	Whatcom	Bridge to Lake Whatcom	8/1- 10/31
Yakima River	Yakima	Mouth to Prosser Dam	9/1 - 10/22
Yakima River	Yakima	Hwy 223 Bridge to Sunnyside Dam	9/1 - 10/22

### Saltwater Areas

Budd Inlet		Waters south of a line projected true west from the KGY radio station to the mainland and north of the closed zone provided for in WAC 220-56-128.	8/16-10/31
Ocean Shores Boat Basin			8/16 - 1/31
Westport Boat Basin			8/16-1/31

## #25. Saturday of Memorial Day Weekend Stream Openers

**Proposal:** The Fish and Wildlife Commission requested this proposal be brought forward for public review and comment. It would open some areas to fishing the Saturday of Memorial Day weekend rather than the statewide opening date in June.

**Explanation:** The list below details the streams that are proposed to open the Saturday of Memorial Day weekend, allowing early access to these stream reaches during the traditional three-day weekend. These areas are intended to be part of a pilot program to encourage anglers to visit the northeastern part of our state. The areas listed below can be safely opened at this earlier date because they are areas that do not

have anadromous fish migrating through them. Some of the proposed areas also have over-populations of Eastern brook trout.

<b>Stream/section</b>	<b>Dates open, justification for change.</b>
Roosevelt Lake tributaries between Grand Coulee Dam and State Highway Bridge at Northport except Barnaby Ck, Nancy Ck and tributaries and tributaries listed in Special Rules	Open Sat before Memorial Day – October 31. Will provide enhanced harvest opportunity, - non-anadromous zone. Open Sat before Memorial Day – October 31 (lower river is open year-round). Will provide enhanced harvest opportunity on brown trout - non-anadromous zone.
Colville River from bridge at the town of Valley upstream and all tributaries	Open Sat before Memorial Day – October 31. Will provide enhanced harvest opportunity, - non-anadromous zone.
Kettle River	Modify closed waters on the Arm upstream to Barstow Bridge to end on the Friday before Memorial Day. This will allow fishing the Saturday before Memorial Day and correlate with the early stream opener proposal for the Kettle River above. Will provide enhanced harvest opportunity, - non-anadromous zone.
Roosevelt Lake Kettle Arm	Open Sat before Memorial Day – October 31. Will provide enhanced opportunity to harvest Eastern brook trout. Bonus limits already in place for Eastern brook trout.
Little Pend Oreille River	