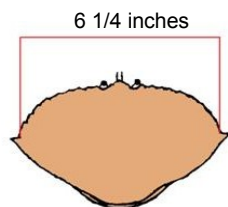
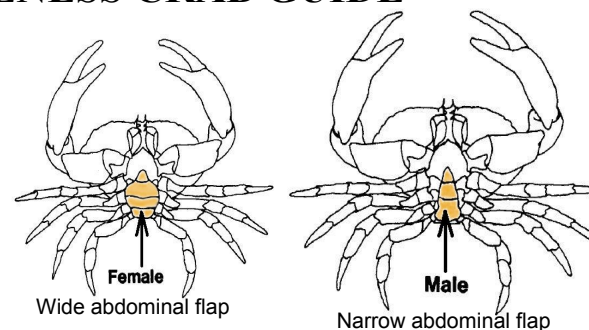


# PUGET SOUND RECREATIONAL DUNGENESS CRAB GUIDE

## KNOW HOW TO IDENTIFY MALE AND FEMALE CRAB

It is illegal to take female Dungeness crab.

Female: wide abdominal flap. Male: narrow abdominal flap.



## KNOW HOW TO MEASURE YOUR CRAB

It is illegal to take Dungeness crab smaller than 6 1/4 inches. Dungeness Crab smaller than 6 1/4 inches are needed to reproduce and maintain the population. Crab are measured across the carapace inside the tips using a crab gauge. Gauges are available at most sporting goods stores.

## RECORD YOUR CRAB ON A CATCH RECORD CARD (CRC)

It is illegal to possess Dungeness crab without marking them on your CRC with the correct Marine Area and date.

When you are finished removing the crab from your trap, immediately tally the crab that you keep on the CRC! When you are finished crabbing for the day, total the crab for your trip and make sure the correct date and Marine Area are also recorded.

SUMMER CATCH CARD									
08 DOC#: 56908506587124									
	Month	Day	Marine Area	Check (✓) one box for each crab kept					Crab Kept Per Day
EX	7	5	8-2	✓	✓	✓	✓	✓	5
EX	8	7	12	✓	✓	✓			3

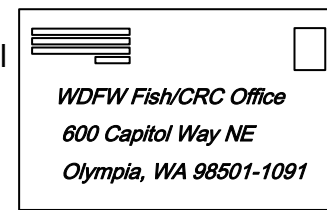
## REPORT YOUR CRC INFORMATION BY THE DATE PRINTED ON THE CARD

Every CRC must be accounted for even if you did not catch any crab. It is illegal to not report and you will be fined \$10 if you do not submit your CRC by 1. Internet or 2. Mail.

1. Internet reporting  
<https://fishhunt.dfw.wa.gov/wa/crabreport>



2. Mail



Washington Department  
of Fish and Wildlife

## PUGET SOUND RECREATIONAL DUNGENESS CRAB RULES

Shellfish Rule Change toll-free Hotline is **(866) 880-5431** and the WDFW website is <http://wdfw.wa.gov>

### GENERAL CRAB GEAR RULES:

- For crabbing, one person can work 2 units of gear. There is no limit on the number of units of crab gear per boat.
- Every shellfish pot, ring net, or star trap left unattended in Washington waters must have its own buoy line and a separate buoy that is permanently and legibly marked with the operator's first name, last name, and permanent address (telephone number is voluntary). It is **ILLEGAL** to pull unattended shellfish gear with a buoy that does not have your name on it, and only one name and address may appear on each buoy. Any angler may assist the person whose name is on the buoy while he or she is pulling the pot. No fisher may set, fish, or pull shellfish gear from a vessel, one hour after official sunset to one hour before official sunrise. **All shellfish gear must be removed from the water on closed days.**
- Crab buoys must be constructed of durable material (no bleach, antifreeze, or detergent bottles, paint cans, etc.) and must be visible on the surface at all times. All crab buoys must be half red and half white in color, and both colors need to be visible when fishing. Personal flags and staff, if attached to buoys, can be of any color. Buoy lines must be weighted sufficiently to prevent them from floating on the surface.
- All crab pots must be equipped with a biodegradable device (rot/escape cord) and shall include one or more of the following:
  - securing the pot lid hook or tie down strap with a single loop of cord; or
  - sewing a 3" by 5" escape panel in the upper half of pot closed with cord; or
  - attaching the pot lid or one pot side (serving as a pot lid) with no more than three single loops of cord.Rot cord used must be untreated 100% cotton or other natural fiber no larger than thread size 120. This cord, when attached as described above, must be able to rot away and allow crab, shrimp, crawfish and fish to escape freely if the pot is lost. A derelict crab pot without proper escape cord can attract and kill crabs for years after the pot has been lost.

### CRAB GEAR SPECIFICATIONS:

- The minimum mesh size for crab pots is 1½", and all pots must have two 4¼" minimum inside diameter escape rings in the upper half of the pot.
- All parts of ring nets and star traps must lie flat on the sea bottom and may not restrict free movement of crab until lifted. Shellfish pots must be covered by water at all times while being fished.
- Crab pots must not exceed 13 cubic feet.