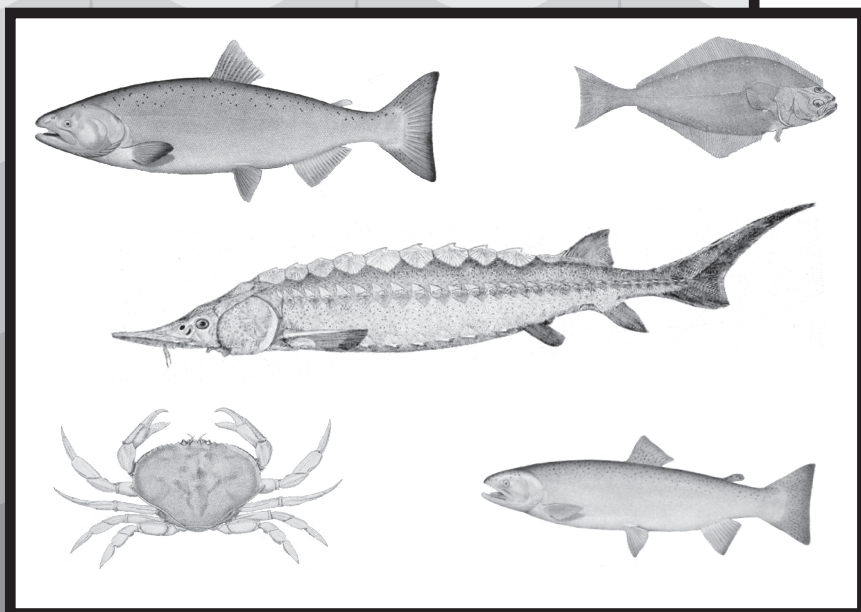


# Washington State Sport Catch Report 2007



by Eric Kraig



*Washington Department of  
FISH AND WILDLIFE  
Fish Program  
Science Division*



# WASHINGTON STATE SPORT CATCH REPORT 2007

by

Eric Kraig

State of Washington  
Christine Gregoire, Governor

Washington State Department of Fish and Wildlife  
Phillip Anderson, Director

Fish Program  
Jim Scott, Assistant Director

Department of Fish and Wildlife  
Fish Science Division  
600 Capitol Way N  
Olympia, Washington 98501



September 2011





## **ACKNOWLEDGEMENTS**

---

Many Department of Fish and Wildlife biologists and program staff contributed to the compilation and editing of this report. Thanks go to the staff in Licensing, Information Systems, Support Services Unit, and Fish Management. Special thanks are due to Lynette Bounds, Kate McClain, Susan Markey, Shelley Peterson, Deb Naylor, Steve Thiesfeld, Tracey Scalici, Sheila Smith, Tim Flint, Bob Gibbons, Bob Leland, Bill Gill, Glen Mendel, Joe Hymer, Olaf Langness, and David Bramwell.

# TABLE OF CONTENTS

---

List of Tables .....	iii
Introduction .....	1
Sport Licenses .....	5
Technical Data .....	7
Salmon .....	13
Map of Salmon Catch Record Card Areas .....	14
Description of Salmon Catch Record Card Areas .....	15
Sturgeon .....	47
Map of Sturgeon Catch Record Card Areas .....	48
Description of Sturgeon Catch Record Card Areas .....	49
Steelhead .....	55
Marine Fish .....	77
Shellfish .....	81

# LIST OF TABLES

---

## SPORT LICENSES

Table 1.	Number and Value of Sport Fishing Licenses Sold in Washington in the 2007-2008 Fishing Year .....	6
----------	---	---

## TECHNICAL DATA

Table 2.	Number of Sport Salmon Catch Record Cards Issued .....	9
Table 3.	Number of Sport Sturgeon Catch Record Cards Issued .....	10
Table 4.	Number of Sport Steelhead Catch Record Cards Issued .....	11
Table 5.	Sport Salmon, Steelhead, and Sturgeon Technical Catch Data .....	12

## SALMON

Table 6.	Annual Sport Salmon Catch, 1971 – 2007 .....	16
Table 7.	2007-2008 Total Sport Salmon Catch .....	17
Table 8.	2007-2008 Sport Salmon Marine Catch, Area 1 – Ilwaco: Ocean .....	18
Table 9.	2007-2008 Sport Salmon Marine Catch, Area 1 – Ilwaco: River .....	18
Table 10.	2007-2008 Sport Salmon Marine Catch, Area 2 – Westport .....	19
Table 11.	2007-2008 Sport Salmon Marine Catch, Area 2-1 – Willapa Bay .....	19
Table 12.	2007-2008 Sport Salmon Marine Catch, Area 2-2 – Grays Harbor .....	20
Table 13.	2007-2008 Sport Salmon Marine Catch, Area 3 – LaPush .....	20
Table 14.	2007-2008 Sport Salmon Marine Catch, Area 4 – Neah Bay .....	21
Table 15.	2007-2008 Sport Salmon Marine Catch, Area 5 – Sekiu – Pillar Point .....	21
Table 16.	2007-2008 Sport Salmon Marine Catch, Area 6 – East Juan de Fuca Strait .....	22
Table 17.	2007-2008 Sport Salmon Marine Catch, Area 7 – San Juan Islands .....	22
Table 18.	2007-2008 Sport Salmon Marine Catch, Area 8-1 – Deception Pass / Hope Island .....	23
Table 19.	2007-2008 Sport Salmon Marine Catch, Area 8-2 – Port Susan / Port Gardner .....	23
Table 20.	2007-2008 Sport Salmon Marine Catch, Area 9 – Admiralty Inlet .....	24
Table 21.	2007-2008 Sport Salmon Marine Catch, Area 10 – Seattle / Bremerton .....	24
Table 22.	2007-2008 Sport Salmon Marine Catch, Area 11 – Tacoma / Vashon Island .....	25
Table 23.	2007-2008 Sport Salmon Marine Catch, Area 12 – Hood Canal .....	25
Table 24.	2007-2008 Sport Salmon Marine Catch, Area 13 – South Puget Sound .....	26
Table 25.	2007-2008 Sport Freshwater Catch, By Area and Month .....	27
Table 26.	2007-2008 Sport Salmon Catch, Unknown Area by Month .....	42
Table 27.	2007-2008 Washington Sport Salmon Fishing, By Residence .....	43
Table 28.	2007-2008 Frequency Distribution of Salmon Cards and Catch .....	44
Table 29.	2007-2008 Inventory of Salmon Catch Record Cards Received .....	45

# LIST OF TABLES

---

## STURGEON

Table 30.	2007-2008 Sport Sturgeon Catch.....	50
Table 31.	2007-2008 Sport Sturgeon Fishing, By Residence .....	53
Table 32.	2007-2008 Frequency Distribution of Sturgeon Cards and Catch .....	54
Table 33.	2007-2008 Inventory of Sturgeon Catch Record Cards .....	54

## STEELHEAD

Table 34.	2007-2008 Sport Steelhead Catch.....	56
Table 35.	2007-2008 Sport Steelhead Fishing, By Residence .....	74
Table 36.	2007-2008 Frequency Distribution of Steelhead Cards and Catch .....	75
Table 37.	2007-2008 Inventory of Steelhead Catch Record Cards Received .....	76

## MARINE FISH

Table 38.	2007 Coastal Sport Bottomfish Catch .....	78
Table 39.	2007 Washington Recreational Pacific Halibut Catch .....	79
Table 40.	2007 Sport Bottomfish Catch by Boat-Based Anglers in Puget Sound .....	80

## SHELLFISH

Table 41.	2007-2008 Seasonal Summary of Sport Razor Clam Digging on Ocean Beaches.....	82
Table 42.	2007 Clam and Oyster Recreational Use and Harvest Estimates from Intertidal Areas East of Dungeness Spit .....	83
Table 43.	2007 Hood Canal Sport Shrimp Fishery.....	85
Table 44.	2007 Puget Sound Sport Shrimp Fishery .....	85
Table 45.	2007-2008 Sport Dungeness Crab Catch.....	86



# INTRODUCTION

---

The Washington State Sport Catch Report was first published in 1967. The report originally provided salmon catch estimates, which were and still are based on data from catch record cards (punch cards). In 1975, marine fish sport harvest estimates were added to the report, followed by shellfish estimates in 1976. Marine fish and intertidal shellfish sport harvest estimates are based on field and creel surveys. In 1994, with the merger of the departments of Fisheries and Wildlife, steelhead sport harvest estimates were added to the report. Now, catch record card data are collected for salmon, sturgeon, steelhead, Dungeness crab and halibut. The card data is supplemented with field or creel survey data or telephone surveys where available to improve recreational harvest estimate accuracy. The sport harvest estimates for salmon, steelhead, sturgeon, marine fish and shellfish are produced at varying times of each year. For this reason, coupled with an increase in the number of catch record cards issued, budget, and staffing constraints, the 2007 edition of the Washington State Sport Catch Report is being published in September 2011.

The 2006 sport estimates reflect harvest from April 1, 2007, through March 31, 2008. Historically, salmon, sturgeon, halibut, marine fish and shellfish estimates were made on a calendar year basis from January 1 through December 31. Steelhead estimates were summarized from May 1 through the next April 30 to better capture the results of steelhead “run years”. Effective January 1, 1999, the sport license system adopted an April 1 to March 31 license year for all species. To adjust to the new reporting time frames, the 1999 sport report included 15 months of salmon and sturgeon catch and 11 months of steelhead catch (May 1, 1999 – March 31, 2000). When comparing past years’ sport harvest estimate tables, please note the changes in the license structure and reporting year as described above.

## SPORT LICENSES AND CATCH RECORD CARDS

In 2007, the following licenses and catch record cards were required to fish in Washington:

- A saltwater license was required for resident and non resident anglers 16 years of age and over. This license allowed the holder to fish for finfish species in saltwater. This license was available in resident annual, resident senior (ages 70 and over), and non-resident annual. In addition, a free catch record card was required for all anglers of all ages to fish for salmon, steelhead, for halibut in Puget Sound and the Strait of Juan de Fuca, and for sturgeon in the Columbia River, Grays Harbor, Willapa Bay and all tributaries of these three systems.
- A freshwater license was required for resident anglers 16 years of age and over, to fish for finfish species existing in freshwater. This license was available in resident annual, resident senior (ages 70 and over), and non-resident annual. A free catch record card was also required for anglers of all ages to fish for salmon, steelhead and for sturgeon in Columbia River, Grays Harbor, Willapa Bay and all tributaries of these three systems.
- A shellfish/seaweed license was required for resident and non-resident fishers 15 years of age and older. This license allowed the holder to fish for crab, gooseneck barnacles, mussels, octopus, scallops, oysters, razor clams, sea cucumbers, clams, squid and seaweed. A free catch record card was required for crabbers of all ages to fish for Dungeness crab, in Puget Sound.
- A combination license was available for annual and two-day resident fishers and non-resident fishers 15 years of age and older to fish for all legal species in all water of the state.

Catch record cards were significantly changed beginning in 2000. Previously, separate cards were issued for each species group: salmon, sturgeon, steelhead, or halibut. In 2000, these four species groups plus Dungeness crab were combined onto one card record document. A catch record card was issued at no charge to anyone wishing to fish for any of these groups.

In 2001 WDFW implemented the Washington Interactive Licensing Data (WILD) system to electronically capture recreational license issuance information at the point of sale. The catch record card remained the same paper document distributed by sport license vendors, but demographic data about persons receiving the cards became available almost immediately.

Table 1 lists license sales from April 1, 2007, to March 31, 2008, based on a direct count of sales. Tables 2, 3, and 4 list the estimated number of salmon, sturgeon and steelhead catch record cards issued. Note that the number of catch record cards issued shown in these tables are estimated from the catch record card databases, and are not directly comparable to the license sales number. These numbers cannot be compared because anglers under 15 and over 70 are required to obtain a catch record card but not a license. Also, not all dealers returned their catch record card issuance stubs, nor did all anglers return their catch record cards, therefore, correction factors were applied.

## METHODS

---

Sport harvest estimates are made in Washington State using various methods. These include catch record cards for salmon, steelhead, and sturgeon statewide, and for halibut in Puget Sound and the Strait of Juan de Fuca. Estimates from catch record cards are available six months to one year after the end of the season. Creel, telephone interviews and mail surveys are carried out for salmon, sturgeon, steelhead, halibut, and shellfish in areas where management requires more timely estimates. Creel surveys consist of checking anglers who are exiting the fishery and asking specific questions about catch and effort. The creel survey estimates for some species and areas are substituted for catch record card estimates (this is noted in the tables). Dungeness crab estimates are based on creel and phone estimates.

The sport catch record card is used to produce the annual sport harvest estimates for salmon, steelhead, sturgeon, and halibut. Anglers holding in-sample cards are sent reminders to return their CRC's. Harvest summed from returned in-sample cards is expanded to account for the un-sampled cards (75%) and unreturned cards. A bias adjustment factor is applied in some areas and species to account for successful anglers returning cards at a higher rate than unsuccessful anglers. Creel survey data are substituted for CRC data when available. The preliminary sport harvest estimates are sent to WDFW and Tribal biologists statewide for review. After review comments are compiled and investigated, final sport harvest estimates are prepared and distributed.

The methods used produce estimates of sport harvest, which have some level of uncertainty. This uncertainty, or variance, is estimated and expressed with confidence levels, which are not provided in this report. These variance estimates are available upon request.

## OCEAN CATCH DATA

Sport catch data from coastal areas 1 – 4 were reported using “port sampling” (creel survey) catch estimates. Such estimates were derived by monitoring daily landings at four coastal ports: Ilwaco, Westport, La Push, and Neah Bay. Catch is reported in the area where the fish was caught and not the area where it was landed.

## STATISTICAL MONTHS AND STATISTICAL WEEKS

Some catch data (i.e. salmon and bottomfish) are reported using statistical months or statistical weeks. Statistical weeks (defined as Monday-Sunday) are consecutively numbered weeks beginning on January 1 and continuing through week 53 or 54, ending on December 31. The first and last weeks of any year usually contain less than 7 days. Statistical months are made up of a set number of statistical weeks, which approximate calendar months but do not coincide with calendar month start and end dates. For example, in 2007, the statistical month of January begins January 1 and ends February 1 and the statistical month of February starts on February 2 and ends March 24. Due to the differences between calendar and statistical months, some catch may be reported during what appears to be a closed period.

## SALMON

Annual sport salmon catch estimates for 1971 through 2007 are shown in Table 6. Between April 1, 2007, and March 31, 2008 a total of 114,492 salmon were caught in marine areas, and 174,224 salmon were caught in freshwater. The marine totals by species, as shown in Table 7, are: 46,627 chinook; 63,709 coho; 2,651 chum; 19 pink; 197 sockeye; and 76 jacks (all species combined). Freshwater species breakdowns are: 66,117 chinook; 32,266 coho; 10,911 chum; 0 pink; 59,933 sockeye; 6,209 jacks (all species combined).

Catch record cards are used to estimate sport salmon catch in marine and freshwater areas with some exceptions. In marine areas, creel survey estimates were substituted for the catch record card estimates in ocean areas 1-4 (excluding area 2.1 Willapa Bay and area 2.2 Grays Harbor), in Area 5 from July 1 to September 30 and in Area 6 from July 1 to August 1. In freshwater areas, creel survey estimates were substituted for the catch record card estimates in the Lower Columbia River for February–October, and for the Lake Washington sockeye fishery in July. All other estimates are from catch record cards.

## STURGEON

On the new combined sport catch record card, sturgeon fishers were required to record their catch statewide. The total sport harvest for 2007, based on creel surveys and catch record card returns, was 14,356 fish. Of this total, 13,479 white sturgeon and 42 green sturgeon came from the Columbia River and Snake River systems combined (Table 30). Catch from coastal rivers (including Willapa Bay and Grays Harbor) totaled 456 white sturgeon. Puget Sound rivers and marine areas produced 196 white sturgeon. For monthly catch information see Table 30.

## **STEELHEAD**

Harvest estimates for sport-caught summer and winter steelhead are based on catch record card returns. Steelhead caught during the months of May through October are considered “summer-runs,” designated SSH. Steelhead caught from November through April are considered “winter-runs,” designated WSH, with the exception of steelhead caught above Bonneville Dam on the Columbia River, where all steelhead are considered “summer-runs,” because of run and spawn timing.

Table 34 presents steelhead sport harvest estimates for the 2007-2008 season geographically by stream and river system. Monthly estimate totals are given for marked and unmarked steelhead.

## **MARINE FISH**

Marine fish are those species of fish which live their entire lives in salt water. There are four general groups of marine fish for management purposes: 1) bottomfish, which are species such as rockfish, lingcod and most species of sole and flounder; 2) forage fish, which are small, schooling fish such as herring and smelt; 3) tunas and mackerels; 4) Pacific halibut.

The recreational catch of bottomfish and halibut in ocean waters (Catch Areas 1-4) is estimated from marine surveys (Table 38 and 39). The estimates are made for each of the four main coastal fishing areas: Ilwaco, Westport, La Push and Neah Bay.

The Puget Sound (Catch Areas 5-13) catch of bottomfish, excluding halibut, is estimated using a combination of two surveys: a creel survey of anglers to determine the catch rate and species composition and a phone survey of licensed anglers to determine total fishing effort. These estimates are shown in Table 40. The recreational catch of forage fish is not routinely monitored and no harvest estimate is available

## **SHELLFISH**

Razor clam harvest on the coastal beaches is summarized in Table 41. During the fall of 2007 and the spring of 2008 242,317 digging trips resulted in a harvest of 3,030,840 clams, for an average of 12.5 clams per trip.

Puget Sound recreational clam and oyster harvest estimates are shown in Table 42. Harvest totals for Manila and native littleneck clams, butter clams, cockles, softshell clams, horse clams, geoducks and oysters are shown for public access beaches. Estimates show 90,703 sport harvester trips gathered 305,397 total pounds of clams and 483,816 oysters in 2007.

The Hood Canal sport shrimp fishery harvest is reported in Table 43. A total of 77,028 pounds of shrimp were caught during the seven days of the season. Puget Sound shrimpers caught 36,088 pounds of shrimp between May and September. The sport crab fishery in the Puget Sound areas is summarized in Table 45. Crabbers harvested an estimated 1,141,977 pounds of Dungeness crab.

# SPORT LICENSES

**Table 1. Number and Value of Sport Fishing Licenses Sold in Washington**

April 1, 2007 - March 31, 2008 - License Year				
Type of License	Price	Number Sold	Value	
<b>Saltwater</b>				
Resident	\$18.00	46,331	\$852,279.00	
Non-Resident	\$36.00	3,158	\$114,961.00	
Senior	\$5.00	15,098	\$79,214.00	
<b>Freshwater</b>				
Resident	\$20.00	344,285	\$6,885,700.00	
Non-Resident	\$40.00	19,712	\$788,480.00	
Senior	\$5.00	33,637	\$168,185.00	
<b>Shellfish/Seaweed</b>				
Resident	\$7.00	78,052	\$546,364.00	
Non-Resident	\$20.00	4,978	\$99,560.00	
Senior	\$5.00	15,171	\$68,255.00	
<b>Combination (Saltwater/Freshwater/Shellfish)</b>				
Resident	\$36.00	156,158	\$5,621,688.00	
Non-Resident	\$72.00	2,382	\$171,504.00	
Disabled Veteran	\$5.00	10,311	\$51,555.00	
Youth	\$5.00	14,954	\$74,770.00	
<b>Short-term Combination</b>				
1-day Resident	\$6.39	40,213	\$274,239.00	
1-day Non-Resident	\$12.79	31,318	\$413,890.00	
2-day Resident	\$9.13	13,059	\$124,837.00	
2-day Non-Resident	\$18.26	13,293	\$248,541.00	
3-day Resident	\$11.87	10,602	\$130,444.00	
3-day Non-Resident	\$23.74	9,511	\$229,927.00	
4-day Resident	\$13.70	862	\$12,199.00	
4-day Non-Resident	\$27.40	2,549	\$70,986.00	
5-day Resident	\$15.53	1,120	\$20,788.00	
5-day Non-Resident	\$31.05	4,877	\$153,656.00	
<b>Razor Clam</b>				
Annual Resident	\$5.50	22,455	\$123,503.00	
Annual Non-resident	\$11.00	2,208	\$24,288.00	
3-day	\$3.50	27,984	\$97,944.00	
<b>PS Crab Endorsement</b>				
Annual	\$2.28	180,363	\$411,227.64	
1-5 day	\$0.45	10,694	\$4,812.30	
<b>Charter/Guide Stamps</b>				
Charter Stamps	\$6.39	28,155	\$189,726.00	
Guide - Resident	\$6.39	2,725	\$18,453.00	
Guide - Non-resident	\$12.79	985	\$12,983.00	
<b>Duplicate Catch Cards</b>				
Resident	\$10.00	14,231	\$142,310.00	
Non-Resident	\$10.00	1,254	\$12,540.00	
Youth	\$10.00	1,124	\$11,240.00	
Senior	\$10.00	715	\$7,150.00	
Disabled	\$10.00	310	\$3,100.00	
<b>Duplicate Licenses</b>				
Resident		12,674	\$82,968.00	
Non-Resident		494	\$3,489.00	
Youth		378	\$2,363.00	
Senior		906	\$4,331.00	
Disabled		243	\$1,675.00	
<b>Total</b>			<b>\$18,356,124.94</b>	

# TECHNICAL DATA

## Example of 2007 Sportfish Catch Record Card (front and back)



### WASHINGTON DEPARTMENT OF FISH AND WILDLIFE SPORTFISH CATCH RECORD

Immediately upon retaining a salmon, steelhead, sturgeon, halibut (in Puget Sound), or Dungeness crab as authorized by the fishing license purchased, you are required to record your catch by completing (in ink) the record provided below. Failure to do so is a violation of RCW 77.

Refer to area and other codes and fish identification instructions on the separate code and instruction sheet or in the "Fishing in Washington" regulations pamphlet for the current year.

Regulations (WAC 220-56-175) require sport harvesters to return catch record card(s) to WDFW by April 30 of the next license year. Return this card to a WDFW regional office or mail to:

Washington Department of Fish and Wildlife  
Fish Program Catch Record Card Office  
600 Capitol Way N  
Olympia, WA 98501-1091

### STURGEON

	AREA CODE	MON (1-12)	DAY (1-31)	CATCH TYPE	TOTAL LENGTH		AREA CODE	MON (1-12)	DAY (1-31)	CATCH TYPE	TOTAL LENGTH
1						6					
2						7					
3						8					
4						9					
5						10					

### STEELHEAD

	AREA CODE	MON (1-12)	DAY (1-31)	MARK TYPE *		AREA CODE	MON (1-12)	DAY (1-31)	MARK TYPE *
1					16				
2					17				
3					18				
4					19				
5					20				
6					21				
7					22				
8					23				
9					24				
10					25				
11					26				
12					27				
13					28				
14					29				
15					30				

(\* M=Marked U=Unmarked)

### SALMON

	AREA CODE	MON (1-12)	DAY (1-31)	CATCH TYPE		AREA CODE	MON (1-12)	DAY (1-31)	CATCH TYPE
1					14				
2					15				
3					16				
4					17				
5					18				
6					19				
7					20				
8					21				
9					22				
10					23				
11					24				
12					25				
13					26				

### DUNGENESS CRAB

	AREA CODE	MON (1-12)	DAY (1-31)	GEAR TYPE	TOTAL CRAB	CRAB TALLY		AREA CODE	MON (1-12)	DAY (1-31)	GEAR TYPE	TOTAL CRAB	CRAB TALLY	
	<b>EXAMPLE</b>								<b>7</b>	<b>9</b>	<b>15</b>	<b>R</b>	<b>5</b>	<b>TH</b>
1							18							
2							19							
3							20							
4							21							
5							22							
6							23							
7							24							
8							25							
9							26							
10							27							
11							28							
12							29							
13							30							
14							31							
15							32							
16							33							
17							34							
18							35							
19							36							

### HALIBUT

Did you fish for Halibut?  Yes  No

	AREA CODE	MON (1-12)	DAY (1-31)	CHART PRIVATE		AREA CODE	MON (1-12)	DAY (1-31)	CHART PRIVATE
1					5				
2					6				
3					7				
4					8				

(C=Charter P=Private)

For Puget Sound marine areas 5-13 only.



**Table 2. Number of Sport Salmon Catch Record Cards Issued 1971 - 2007**

<b>Year</b>	<b>Number of Catch Record Cards Issued</b>
1971	541,600
1972	536,750
1973	568,825
1974	562,375
1975	576,075
1976	660,150
1977	641,050
1978	580,375
1979	487,875
1980	433,700
1981	463,561
1982	481,915
1983	481,025
1984	364,286
1985	403,523
1986	431,898
1987	475,459
1988	486,356
1989	509,534
1990	497,215
1991	489,394
1992	419,986
1993	447,986
1994	244,629
1995	416,707
1996	333,773
1997	331,511
1998	265,296
1999-2000	352,003
2000-2001	539,897
2001-2002	827,443
2002-2003	767,465
2003-2004	799,326
2004-2005	715,394
2005-2006	686,831
2006-2007	672,753
2007-2008	640,893

**Table 3. Number of Sport Sturgeon Catch Record Cards Issued 1988 - 2007**

<b>Year</b>	<b>Number of Catch Record Cards Issued</b>
1988	33,195
1989	35,576
1990	32,421
1991	32,396
1992	37,615
1993	43,067
1994	54,837
1995	62,572
1996	69,639
1997	76,806
1998	79,264
1999-2000	132,503
2000-2001	554,410
2001-2002	827,443
2002-2003	767,465
2003-2004	799,326
2004-2005	715,395
2005-2006	686,831
2006-2007	672,753
2007-2008	640,893

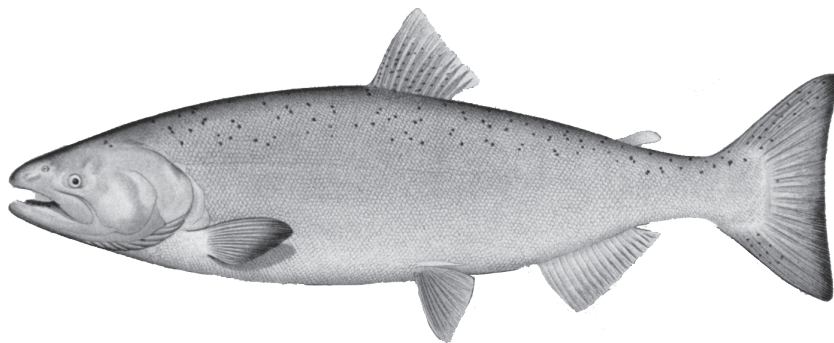
**Table 4. Number of Sport Steelhead Catch Record Cards Issued 1971 - 2007**

<b>Year</b>	<b>Number of Catch Record Cards Issued</b>
1971	145,647
1972	153,977
1973	165,671
1974	154,051
1975-76	no data
1976-77	no data
1977-78	no data
1978-79	130,000
1979-80	136,000
1980-81	139,500
1981-82	132,000
1982-83	100,000
1983-84	101,800
1984-85	133,400
1985-86	121,500
1986-87	100,500
1987-88	102,000
1988-89	108,182
1989-90	106,666
1990-91	98,362
1991-92	98,328
1992-93	98,933
1993-94	94,913
1994-95	87,093
1995-96	101,303
1996-97	92,858
1997-98	68,341
1998-99	85,636
1999-2000	183,520
2000-2001	583,726
2001-2002	827,443
2002-2003	767,465
2003-2004	799,326
2004-2005	715,394
2005-2006	686,831
2006-2007	672,753
2007-2008	640,893

**Table 5. 2007-2008 Catch Record Card Technical Data**

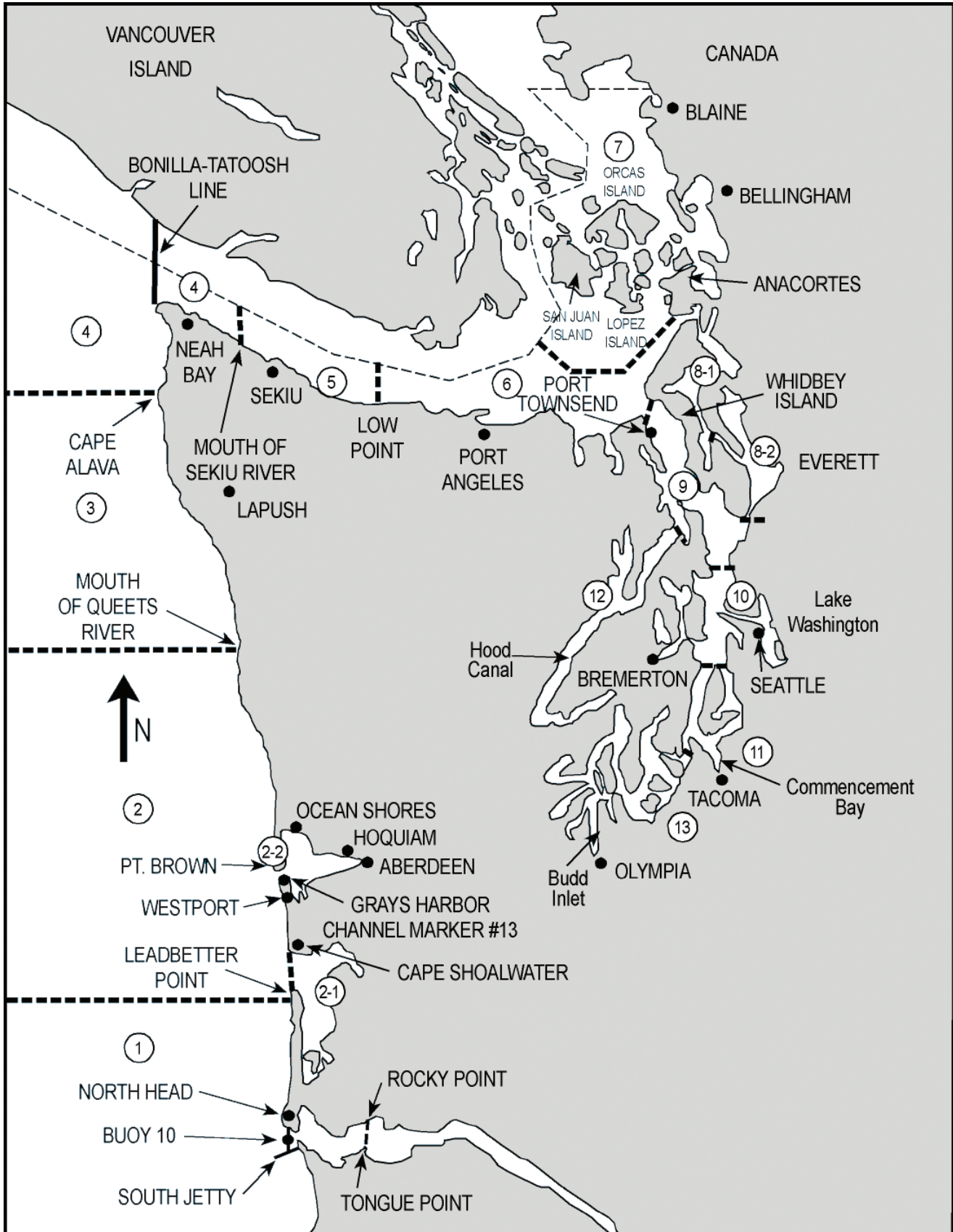
Cards Issued	640,893
In-sample cards	160,223
In-sample cards returned	85,609
Expansion Factor (Cards Issued / In-sample Returns)	7.49
Non-reporting bias correction factors	
Salmon - Marine Area 5	1.00
Salmon - Puget Sound Marine Areas	1.46
Salmon - Freshwater, Grays Harbor, Willapa Bay	1.20
Steelhead	0.98
Sturgeon	1.00

# Salmon



# MAP OF SALMON CATCH RECORD CARD AREAS

## MARINE WATERS ONLY



<b>1</b>	<b>ILWACO</b>	West of the Buoy 10 line at the Columbia River mouth, north to Leadbetter Point.
<b>2</b>	<b>WESTPORT-OCEAN SHORES</b>	From Leadbetter Point north to the Queets River, excluding Willapa Bay and Grays Harbor.
<b>2-1</b>	<b>WILLAPA BAY</b>	East of a line from Leadbetter Point to Cape Shoalwater.
<b>2-2</b>	<b>GRAYS HARBOR</b>	East of a line from the tip of the North Jetty to exposed end of the South Jetty.
<b>3</b>	<b>LA PUSH</b>	From the Queets River north to Cape Alava.
<b>4</b>	<b>NEAH BAY</b>	From Cape Alava north and inside Juan de Fuca Strait to the Sekiu River.
<b>5</b>	<b>SEKIU AND PILLAR POINT</b>	From mouth of the Sekiu River east to Low Point, mouth of the Lyre River.
<b>6</b>	<b>EAST JUAN DE FUCA STRAIT</b>	From Low Point east to the Partridge Point - Point Wilson line north to the line from Trial Island (near Victoria B.C.) - Vessel Traffic Separation Buoy "R" - Smith Island to the Lawson Reef Buoy to Northwest Island to the Initiative 77 marker on Fidalgo Island.
<b>7</b>	<b>SAN JUAN ISLANDS</b>	All marine waters north of the Trial Island line described under Area 6 to the United States-Canada boundary.
<b>8-1</b>	<b>DECEPTION PASS, HOPE</b>	From West Point to Reservation Head eastward through Deception Pass, including all waters of Swinomish Slough and Skagit Bay, and the portion of Saratoga Passage north and west of a line from East Point Light to light on Camano Island (Saratoga Pass Light #4FI Red 4 Sec.).
<b>8-2</b>	<b>PORTS SUSAN AND GARDNER</b>	East of East Point Light-Camano Island Light line (described in 8-1 above) and north of the Possession Point-Shipwreck line (described in 9 below).
<b>9</b>	<b>ADMIRALTY INLET</b>	All waters inside and south of the Partridge Point - Point Wilson line, south and west of a line from Possession Point 110° true to shipwreck, north of the Hood Canal Bridge, and north of the Apple Cove Point-Edwards Point line.
<b>10</b>	<b>SEATTLE-BREMERTON AREA</b>	South from the Apple Cove Point-Edwards Point line to a line projected true east- west through the north tip of Vashon Island.
<b>11</b>	<b>TACOMA-VASHON ISLAND</b>	South from a line projected true east west through the north tip of Vashon Island to the Tacoma Narrows Bridge.
<b>12</b>	<b>HOOD CANAL</b>	All waters south of the Hood Canal Bridge.
<b>13</b>	<b>SOUTH PUGET SOUND</b>	All waters south of Tacoma Narrows Bridge.

---

**FRESHWATER AREAS**

RIVERS OR STREAMS OR LAKES - Name of river, stream or lake, except for Buoy 10

**BUOY 10 (1A)**

From Buoy 10 Line to Rocky Point-Tongue Point Line

Table 6. Annual Sport Salmon Catch

Year	Total	Fresh-water	Un-known	Area 1	Area 1A	Area 2	Area 2-1	Area 2-2	Area 3	Area 4	Area 5	Area 6	Area 7	Area 8	Area 8-1	Area 8-2	Area 9	Area 10	Area 11	Area 12	Area 13
1971	1,344,818	145,904		342,928		446,738			39,682	87,184	71,947	39,573	28,355	5,189			54,920	35,225	27,332	19,841	
1972	1,138,926	121,432		307,938		353,113			31,278	61,704	45,446	45,058	29,536	3,097			42,968	32,942	35,962	28,452	
1973	1,095,360	147,554		236,385		348,406			49,900	48,645	33,347	40,308	14,852	3,966			52,935	42,574	61,919	14,569	
1974	1,320,420	88,048		334,664		320,467			74,832	80,362	50,319	53,222	36,318	5,491			76,518	69,341	105,110	25,728	
1975	1,399,375	101,531		308,475		331,565			57,356	59,451	48,975	74,336	37,626	7,726			100,089	78,832	162,072	31,341	
1976	1,749,560	100,601		433,026		543,295			70,133	68,670	63,966	102,639	55,396	21,688			88,737	62,607	61,562	24,405	52,835
1977	1,191,414	96,843		248,518		321,888			38,359	86,186	73,106	61,568	31,709	17,792			64,651	39,372	44,657	22,020	44,745
1978	1,107,852	86,845		220,548		269,338			24,439	52,270	59,400	68,849	36,293	13,229			73,187	56,479	48,018	26,801	72,156
1979	1,123,809	88,659		167,478		174,365			24,160	53,840	134,354	70,839	48,101	33,835			104,619	71,167	71,495	20,006	60,891
1980	852,879	105,461		158,883		163,748			19,146	29,500	39,587	52,663	24,457	18,432			60,072	52,128	57,751	17,138	53,913
1981	760,104	58,128		142,879		151,301			1,734	36,883	55,900	56,318	21,826	16,986			67,838	42,602	42,175	14,989	50,545
1982	749,995	91,849		102,769	13,069	158,005			9,857	42,716	67,611	33,870	12,947	9,940			49,853	49,727	51,975	8,672	47,135
1983	860,623	108,783		95,593	3,006	100,791			7,318	58,469	62,486	74,311	29,844	23,268			98,485	54,228	72,772	11,756	59,513
1984	561,428	142,170		23,927	55,865	16,631			167	6,604	39,276	67,246	29,985	17,442			79,526	24,130	28,781	5,158	24,520
1985	686,333	107,734		75,013	18,914	93,620			2,062	26,878	101,920	45,342	23,798	25,427			75,193	33,019	38,157	4,897	14,359
1986	830,644	115,469		69,915	86,360	98,421			2,553	25,027	138,951	71,544	27,550	26,822			79,730	33,686	33,891	3,460	17,265
1987	782,834	110,636		62,393	61,048	71,458			3,005	29,418	107,138	82,377	27,152	31,421			86,270	42,179	32,753	8,947	26,639
1988	703,088	168,594		22,960	120,019	62,001			3,341	19,576	107,935	47,483	22,225	16,514			47,109	28,020	22,202	2,420	12,689
1989	832,214	121,417		87,755	67,734	100,000			2,405	44,600	164,580	64,766	19,078	23,165			63,724	36,748	24,561	4,588	7,093
1990	824,143	107,934		97,844	16,850	102,984			5,809	48,329	223,012	54,848	12,797	14,865			57,875	47,519	25,555	1,618	6,304
1991	943,473	153,719		77,608	152,974	107,362	1,965	9,047	5,615	43,357	216,816	42,812	16,602		3,528	16,809	40,390	32,229	15,549	3,225	3,866
1992	569,195	90,032		48,356	37,157	67,427	1,978	0	2,031	25,820	108,876	30,894	12,515		3,295	11,836	47,157	51,338	18,198	6,303	5,982
1993	599,361	145,579		49,587	17,975	57,990	2,260	743	3,469	31,154	80,496	44,174	35,697		6,150	18,170	41,949	36,699	14,130	3,540	9,599
1994	156,896	61,142			1,069	71	2,574	1,971	Closed	Closed	518	1,184	8,322		1,917	3,301	6,978	23,279	25,360	8,905	10,305
1995	524,232	190,158		3,743	24,954	29,122	936	1,799	1,990	15,604	53,553	20,617	23,801		23,503	42,900	22,920	28,560	28,242	5,200	6,630
1996	390,660	161,108		17,882	3,509	23,089	2,422	2,601	1,901	8,750	41,820	18,103	15,486		2,350	13,968	20,343	18,972	25,417	6,408	6,531
1997	394,868	98,220		11,976	22,441	16,261	409	1,433	1,260	2,577	52,890	23,614	35,016		5,894	37,649	24,356	25,277	23,146	7,089	5,360
1998	235,466	78,664		4,738	5,364	9,348	1,329	2,970	762	8,045	24,509	6,657	5,801		2,095	12,409	24,324	16,674	17,272	7,782	6,723
1999	239,317	92,611		21,989	11,222	19,056	2,137	1,207	4,387	6,650	24,546	3,509	5,765		1,519	8,805	9,228	4,009	14,517	4,046	4,114
2000	401,180	191,805	4,228	27,889	16,335	34,636	870	2,736	2,519	11,652	29,883	4,334	7,178		2,105	12,798	12,608	15,681	14,212	4,580	5,131
2001		405,590	11,042	82,641	80,701	85,645	1,255	5,784	4,188	21,991	87,639	12,081	17,268		17,685	74,947	70,259	26,448	27,761	17,677	5,793
2002	551,479	306,424	6,443	53,015		61,715	960	3,530	3,736	13,523	35,100	1,418	8,326		1,544	8,609	12,731	11,885	12,044	7,039	3,437
2003	810,616	342,884	6,940	83,164		64,733	1,953	2,135	6,537	32,207	88,885	13,781	12,409		10,573	51,784	44,697	16,541	17,719	10,898	2,776
2004	474,929	214,116	2,562	59,321		38,616	1,759	6,017	5,152	34,760	45,000	2,511	3,428		1,117	7,606	15,024	13,766	13,944	7,293	2,937
2005	451,411	200,535	1,789	38,490		32,823	3,580	1,910	4,316	15,297	58,621	3,295	5,934		1,691	18,846	24,125	12,866	15,022	8,392	3,879
2006	288,716	174,224	1,212	21,254		14,506	3,368	1,812	3,754	7,136	13,244	1,601	4,486		378	2,280	6,398	11,193	12,024	6,214	3,632
2007	545,737	233,800	2,501	49,108		28,694	1,473	1,635	3,545	16,057	75,084	6,626	9,961		1,513	21,604	41,906	20,149	22,602	6,955	4,524

**Note:** In 1976, several area boundary lines were changed resulting in thirteen catch areas instead of twelve. The changes were mostly reflected in catch Areas 8, 9, 10 and new Area 13. In 1989, catch Area 8 was subdivided into Areas 8.1 and 8.2 and catch Area 2 was subdivided into Areas 2, 2-1 and 2-2. For comparative purposes, the catch for Areas 8-1 and 8-2 are totaled and entered under Area 8 until 1990. Beginning in 1991, Areas 8-1 and 8-2, are reported separately. Similarly, the catch in Areas 2, 2-1 and 2-2 are included in the total catch for Area 2 until 1990. Beginning in 1991, they are reported separately. The total catch for Area 1 and Area 1A is included in the total catch for Area 1 until 1981. Starting in 1982, they are reported separately. Beginning in 2002, Area 1A catch is included in the freshwater total.

**Note:** Prior to 1999, sport salmon estimates were based on calendar years. In 1999, the sport estimates cover January 1, 1999 - March 31, 2000. Starting in 2000, sport salmon estimates are based on the fishing license year which runs from April 1 to March 31.



Table 7. Total 2007-2008 Sport Salmon Catch

Marine Area	Chinook	Coho	Chum	Pink	Sockeye	Jacks	Total Salmon	Marine Angler Trips	Salmon per Trip
Ilwaco-Ocean (Area 1)	1,634	47,465		8			49,108	30,165	1.63
Westport (Area 2)	5,244	22,945		505			28,694	25,871	1.09
Willapa Bay (Area 2.1)	1,136	244				93	1,473	N/A	
Grays Harbor (Area 2.2)	728	669		38		200	1,635	N/A	
LaPush (Area 3)	608	2,811		126			3,545	3,309	1.03
Neah Bay (Area 4)	1,458	10,567		4,033			16,057	13,326	0.90
<b>Subtotal Coast*</b>	<b>10,808</b>	<b>84,701</b>		<b>4,710</b>		<b>293</b>	<b>100,512</b>	<b>72,671</b>	<b>1.34</b>
Sekiu-Pillar Point (Area 5)	4,588	32,656	26	37,804	10		75,084	66,877	1.12
East Juan de Fuca (Area 6)	1,642	1,243	8	3,733			6,626	15,056	0.44
San Juan Islands (Area 7)	6,557	634	13	2,675	82		9,961	42,256	0.24
Deception Pass, Hope Island (Area 8.1)	752	600		161			1,513	7,319	0.21
Port Susan & Port Gardner (Area 8.2)	1,496	4,046	22	16,032	8		21,604	52,925	0.41
Admiralty Inlet (Area 9)	8,165	12,595	81	21,039	26		41,906	111,698	0.38
Seattle-Bremerton (Area 10)	8,613	6,754	189	4,593			20,149	62,653	0.32
Tacoma-Vashon Island (Area 11)	12,106	4,298	77	6,121			22,602	86,514	0.26
Hood Canal (Area 12)	2,824	1,564	1,549	1,018			6,955	24,377	0.29
South Puget Sound (Area 13)	3,117	827	504	76			4,524	32,711	0.14
<b>Subtotal Puget Sound</b>	<b>49,860</b>	<b>65,217</b>	<b>2,469</b>	<b>93,252</b>	<b>126</b>		<b>210,924</b>	<b>502,386</b>	<b>0.42</b>
Marine Area Totals*	60,668	149,918	2,469	97,962	126	293	311,436	575,057	<b>0.54</b>
Freshwater Totals	61,977	65,754	11,937	80,033	216	14,384	234,301	N/A	
<b>Grand Totals</b>	<b>122,645</b>	<b>215,672</b>	<b>14,406</b>	<b>177,995</b>	<b>342</b>	<b>14,677</b>	<b>545,737</b>	<b>N/A</b>	

\*Salmon per trip is calculated after subtracting the catch totals for Willapa Bay and Grays Harbor, where angler trip data is not available.

**Table 8. 2007-2008 Sport Salmon Catch, Area 1 - Ilwaco: Ocean**

Week Ending	Year	Chinook	Coho	Pink	Sockeye	Chum	Total Salmon	Marine Angler Trips	Salmon per Trip
July 1	2007	11	540				551	305	1.81
July 8	2007	101	2,075				2,176	1,375	1.58
July 15	2007	76	2,756				2,832	1,909	1.48
July 22	2007	12	1,845	5			1,861	1,110	1.68
July 29	2007	93	4,951				5,044	2,786	1.81
August 5	2007	215	5,251				5,466	2,969	1.84
August 12	2007	701	9,301				10,002	5,638	1.77
August 19	2007	124	6,466	3			6,593	4,303	1.53
August 26	2007	149	10,861				11,010	6,301	1.75
September 2	2007	40	730				769	1,173	0.66
September 9	2007	53	1,443				1,496	1,230	1.22
September 16	2007	61	1,245				1,306	1,033	1.26
September 23	2007		1				1	24	0.04
September 30	2007						0	8	0.00
<b>Total</b>		<b>1,634</b>	<b>47,465</b>	<b>8</b>			<b>49,108</b>	<b>30,165</b>	<b>1.63</b>

**Table 9. 2007 - 2008 Sport Salmon Catch, Area 1 - Ilwaco: River (Buoy 10)**

Week Ending	Year	Chinook	Coho	Pink	Sockeye	Chum	Total Salmon	Angler Trips	Salmon per Trip
August 5	2007		4				4	209	0.02
August 12	2007		4				4	159	0.03
August 19	2007		60				60	948	0.06
August 26	2007	855	811				1,666	4,694	0.35
September 2	2007	331	1,558				1,889	6,533	0.29
September 9	2007	72	768				840	1,913	0.44
September 16	2007	1	59				60	423	0.14
September 23	2007		111				111	203	0.55
September 30	2007		5				5	50	0.10
<b>Total **</b>		<b>1,259</b>	<b>3,380</b>				<b>4,639</b>	<b>15,132</b>	<b>0.31</b>

**NOTE:** Catch by species is presented by actual catch area and therefore may not correspond with catch by quota area statistics reported prior to 1995.

\*\* Includes some catch just above the Megler-Astoria Bridge.

**Table 10. 2007-2008 Sport Salmon Catch, Area 2 - Westport**

Week Ending	Year	Chinook	Coho	Pink	Sockeye	Chum	Total Salmon	Marine Angler Trips	Salmon per Trip
July 1	2007	444	630				1,074	800	1.34
July 8	2007	595	1,028	24			1,647	2,119	0.78
July 15	2007	535	1,823	196			2,555	2,323	1.10
July 22	2007	655	1,475	30			2,160	1,571	1.38
July 29	2007	264	2,332	12			2,608	2,733	0.95
August 5	2007	275	3,295	16			3,587	2,332	1.54
August 12	2007	923	4,171	109			5,204	3,167	1.64
August 19	2007	811	3,707	114			4,632	3,773	1.23
August 26	2007	302	1,267				1,569	2,665	0.59
September 2	2007	230	1,573	2			1,805	2,164	0.83
September 9	2007	100	640				741	1,068	0.69
September 16	2007	108	1,002	2			1,112	1,157	0.96
<b>Total</b>		<b>5,244</b>	<b>22,945</b>	<b>505</b>			<b>28,694</b>	<b>25,871</b>	<b>1.11</b>

**Table 11. 2007-2008 Sport Salmon Catch, Area 2.1 - Willapa Bay**

Statistical Month	Year	Chinook	Coho	Pink	Sockeye	Chum	Chinook Jacks	Coho Jacks	Total Salmon
July	2007	39	45						84
August	2007	674	91				24	12	801
September	2007	385	89				44	6	524
October	2007	19	19					7	45
November	2007	13							13
December	2007	6							6
<b>Total</b>		<b>1,136</b>	<b>244</b>				<b>68</b>	<b>25</b>	<b>1,473</b>

**Table 12. 2007-2008 Sport Salmon Catch, Area 2.2 - Grays Harbor**

Statistical Month	Year	Chinook	Coho	Pink	Sockeye	Chum	Chinook Jacks	Coho Jacks	Total Salmon
June	2007	6							6
July	2007	52	45	6					103
August	2007	45	78	13					136
September	2007	26	39	19				52	136
October	2007	599	475				12	136	1,222
November	2007		32						32
<b>Total</b>		<b>728</b>	<b>669</b>	<b>38</b>			<b>12</b>	<b>188</b>	<b>1,635</b>

**Table 13. 2007-2008 Sport Salmon Catch, Area 3 - La Push**

Week Ending	Year	Chinook	Coho	Pink	Sockeye	Chum	Total Salmon	Marine Angler Trips	Salmon per Trip
July 8	2007	61	363	15			439	369	1.19
July 15	2007	36	119	23			178	235	0.76
July 22	2007	2	36	3			41	116	0.35
July 29	2007	46	272	1			319	297	1.08
August 5	2007	46	240	12			298	248	1.20
August 12	2007	62	583	29			674	414	1.63
August 19	2007	86	253	28			367	272	1.35
August 26	2007	112	307	9			428	349	1.23
September 2	2007	41	496	6			543	370	1.47
September 9	2007	11	64				75	81	0.92
September 16	2007	16	49				65	133	0.49
September 23	2007	9	10				19	101	0.19
September 30	2007	80	19				99	325	0.31
<b>Total</b>		<b>608</b>	<b>2,811</b>	<b>126</b>			<b>3,545</b>	<b>3,309</b>	<b>1.07</b>

**Table 14. 2007-2008 Sport Salmon Catch, Area 4 - Neah Bay**

Week Ending	Year	Chinook	Coho	Pink	Sockeye	Chum	Total Salmon	Marine Angler Trips	Salmon per Trip
July 8	2007	417	1,313	207			1,937	1,901	1.02
July 15	2007	293	1,034	382			1,709	1,710	1.00
July 22	2007	267	1,887	453			2,607	1,892	1.38
July 29	2007	189	716	228			1,132	1,414	0.80
August 5	2007	15	934	547			1,497	985	1.52
August 12	2007	67	995	628			1,691	1,128	1.50
August 19	2007	54	1,184	899			2,137	1,513	1.41
August 26	2007	65	1,060	577			1,702	1,176	1.45
September 2	2007	44	813	112			969	917	1.06
September 9	2007	21	428				449	482	0.93
September 16	2007	26	203				229	209	1.09
<b>Total</b>		<b>1,458</b>	<b>10,567</b>	<b>4,033</b>			<b>16,057</b>	<b>13,326</b>	<b>1.20</b>

**Table 15. 2007-2008 Sport Salmon Catch, Area 5 - Sekiu - Pillar Point**

Statistical Month	Year	Chinook	Coho	Pink	Sockeye	Chum	Total Salmon	Marine Angler Trips	Salmon per Trip
April	2007	155					155	798	0.19
June	2007	90	78	20			188	547	0.34
July	2007	3,061	2,607	10,486	2	4	16,160	18,263	0.88
August	2007	787	6,770	26,860	5	2	34,424	19,038	1.81
September	2007	355	23,186	438	3	20	24,002	27,531	0.87
October	2007	8	15				23	40	0.58
November	2007	70					70	300	0.23
February	2008	39					39	240	0.16
March	2008	23					23	120	0.19
<b>Total</b>		<b>4,588</b>	<b>32,656</b>	<b>37,804</b>	<b>10</b>	<b>26</b>	<b>75,084</b>	<b>66,877</b>	<b>1.12</b>

**NOTE:** Estimates for July-October 15 are from creel surveys; all other estimates are from catch record cards.

**Table 16. 2007-2008 Sport Salmon Catch, Area 6 - East Juan de Fuca Strait**

Statistical Month	Year	Chinook	Coho	Pink	Sockeye	Chum	Total Salmon	Marine Angler Trips	Salmon per Trip
April	2007	74					74	1,759	0.04
June	2007	49					49	199	0.25
July	2007	617	48	565			1,230	2,794	0.44
August	2007	75	234	2,759			3,068	3,173	0.97
September	2007		573	404			977	3,847	0.25
October	2007	83	388	5		8	484	807	0.60
February	2008	436					436	1,356	0.32
March	2008	308					308	1,123	0.27
<b>Total</b>		<b>1,642</b>	<b>1,243</b>	<b>3,733</b>		<b>8</b>	<b>6,626</b>	<b>15,058</b>	<b>0.44</b>

NOTE: Estimates for July - August are from creel surveys; all other estimates are from catch record cards.

**Table 17. 2007-2008 Sport Salmon Catch, Area 7 - San Juan Islands**

Statistical Month	Year	Chinook	Coho	Pink	Sockeye	Chum	Total Salmon	Marine Angler Trips	Salmon per Trip
April	2007	32					32	6,297	0.01
June	2007	138					138	758	0.18
July	2007	1,407	90	290	27		1,814	10,751	0.17
August	2007	827	35	1,889	55		2,806	7,949	0.35
September	2007	514	265	496			1,275	6,333	0.20
October	2007	114	244			8	366	2,627	0.14
November	2007					5	5	58	0.09
February	2008	2,643					2,643	4,665	0.57
March	2008	882					882	2,818	0.31
<b>Total</b>		<b>6,557</b>	<b>634</b>	<b>2,675</b>	<b>82</b>	<b>13</b>	<b>9,961</b>	<b>42,256</b>	<b>0.24</b>

NOTE: Estimates for February are from creel surveys; all other estimates are from catch record cards.

**Table 18. 2007-2008 Sport Salmon Catch, Area 8-1 - Deception Pass / Hope Island**

Statistical Month	Year	Chinook	Coho	Pink	Sockeye	Chum	Total Salmon	Marine Angler Trips	Salmon per Trip
April	2007	81					81	678	0.12
September	2007	5	241	153			399	2,221	0.18
October	2007		359	8			367	1,036	0.35
November	2007	267					267	1,255	0.21
December	2007	32					32	274	0.12
January	2008	164					164	895	0.18
February	2008	137					137	633	0.22
March	2008	67					67	328	0.20
<b>Total</b>		<b>753</b>	<b>600</b>	<b>161</b>			<b>1,514</b>	<b>7,320</b>	<b>0.21</b>

**NOTE:** Estimates for April, November-March are from creel surveys; all other estimates are from catch record cards.

**Table 19. 2007-2008 Sport Salmon Catch, Area 8-2 - Port Susan / Port Gardner**

Statistical Month	Year	Chinook	Coho	Pink	Sockeye	Chum	Total Salmon	Marine Angler Trips	Salmon per Trip
April	2007	155					155	1,605	0.10
May	2007	37					37	791	0.05
June	2007	85					85	3,411	0.02
July	2007	209	56	362			627	8,736	0.07
August	2007	236	434	13,395	8	3	14,076	18,307	0.77
September	2007	18	3,514	2,275		13	5,820	14,425	0.40
October	2007		42				42	976	0.04
November	2007	155				6	161	1,501	0.11
December	2007	51					51	280	0.18
January	2008	149					149	587	0.25
February	2008	144					144	1,183	0.12
March	2008	257					257	1,124	0.23
<b>Total</b>		<b>1,496</b>	<b>4,046</b>	<b>16,032</b>	<b>8</b>	<b>22</b>	<b>21,604</b>	<b>52,926</b>	<b>0.41</b>

**NOTE:** Estimates for April, November-March are from creel surveys; all other estimates are from catch record cards.

**Table 20. 2007-2008 Sport Salmon Catch, Area 9 - Admiralty Inlet**

Statistical Month	Year	Chinook	Coho	Pink	Sockeye	Chum	Total Salmon	Marine Angler Trips	Salmon per Trip
April	2007	616					616	4,430	0.14
May	2007	5					5	67	0.07
June	2007	59					59	3,090	0.02
July	2007	5,064	1,886	1,211	8	3	8,172	27,181	0.30
August	2007	240	2,054	18,368	18	9	20,689	36,975	0.56
September	2007	162	7,198	1,460	0	10	8,830	24,091	0.37
October	2007	51	1,422			41	1,514	6,228	0.24
November	2007	749	35			18	802	3,868	0.21
January	2008	440					440	1,448	0.30
February	2008	607					607	3,380	0.18
March	2008	171					171	941	0.18
<b>Total</b>		<b>8,164</b>	<b>12,595</b>	<b>21,039</b>	<b>26</b>	<b>81</b>	<b>41,905</b>	<b>111,699</b>	<b>0.38</b>

**NOTE:** Estimates for part of July, November-March are from creel surveys; all other estimates are from catch record cards.

**Table 21. 2007-2008 Sport Salmon Catch, Area 10 - Seattle / Bremerton**

Statistical Month	Year	Chinook	Coho	Pink	Sockeye	Chum	Total Salmon	Marine Angler Trips	Salmon per Trip
April	2007	14					14	83	0.17
May	2007	21					21	66	0.32
June	2007	33	153			5	191	464	0.41
July	2007	2,654	1,685	240		8	4,587	23,170	0.20
August	2007	2,832	1,888	3,248		3	7,971	17,180	0.46
September	2007	58	2,437	1,104		26	3,625	9,096	0.40
October	2007	914	557			22	1,493	5,634	0.26
November	2007	1,463	34			81	1,578	4,907	0.32
December	2007	402				44	446	1,175	0.38
January	2008	212					212	849	0.25
February	2008	5					5	17	0.29
March	2008	5					5	17	0.29
<b>Total</b>		<b>8,613</b>	<b>6,754</b>	<b>4,592</b>		<b>189</b>	<b>20,148</b>	<b>62,658</b>	<b>0.32</b>

**NOTE:** Estimates for parts of July, December-January are from creel surveys; all other estimates are from catch record cards.



**Table 22. 2007-2008 Sport Salmon Catch, Area 11 - Tacoma / Vashon Island**

Statistical Month	Year	Chinook	Coho	Pink	Sockeye	Chum	Total Salmon	Marine Angler Trips	Salmon per Trip
April	2007	138					138	447	0.31
May	2007	191					191	1,530	0.12
June	2007	582	55	4			641	6,525	0.10
July	2007	2,954	1,170	383		4	4,511	24,032	0.19
August	2007	6,431	1,741	5,200		7	13,379	37,768	0.35
September	2007	369	1,074	534		4	1,981	8,678	0.23
October	2007	510	252			46	808	2,032	0.40
November	2007	374				4	378	1,186	0.32
December	2007	200				7	207	944	0.22
January	2008	6	5			5	16	197	0.08
February	2008	165					165	2,039	0.08
March	2008	186					186	1,135	0.16
<b>Total</b>		<b>12,106</b>	<b>4,297</b>	<b>6,121</b>		<b>77</b>	<b>22,601</b>	<b>86,513</b>	<b>0.26</b>

**NOTE:** Estimates for June-September are from creel surveys; all other estimates are from catch record cards.

**Table 23. 2007-2008 Sport Salmon Catch, Area 12 - Hood Canal**

Statistical Month	Year	Chinook	Coho	Pink	Sockeye	Chum	Total Salmon	Marine Angler Trips	Salmon per Trip
April	2007	80					80	224	0.36
June	2007	16					16	54	0.30
July	2007	204	51	335			590	2,457	0.24
August	2007	1,625	242	46		11	1,924	8,296	0.23
September	2007	228	910	637			1,775	6,054	0.29
October	2007	7	346			719	1,072	1,983	0.54
November	2007		15			819	834	879	0.95
December	2007	58					58	62	0.94
February	2008	399					399	1,780	0.22
March	2008	207					207	2,591	0.08
<b>Total</b>		<b>2,824</b>	<b>1,564</b>	<b>1,018</b>		<b>1,549</b>	<b>6,955</b>	<b>24,380</b>	<b>0.29</b>

Table 24. 2007-2008 Sport Salmon Catch, Area 13 - South Puget Sound

Statistical Month	Year	Chinook	Coho	Pink	Sockeye	Chum	Total Salmon	Marine Angler Trips	Salmon per Trip
April	2007	148	17				165	2,388	0.07
May	2007	141	13				154	1,786	0.09
June	2007	296	55				351	835	0.42
July	2007	793	190				983	5,206	0.19
August	2007	1,249	118	54		9	1,430	10,723	0.13
September	2007	376	421	22			819	8,960	0.09
October	2007		13			237	250	1,091	0.23
November	2007					245	245	425	0.58
December	2007	14				13	27	239	0.11
January	2008	21					21	367	0.06
February	2008	21					21	229	0.09
March	2008	58					58	460	0.13
<b>Total</b>		<b>3,117</b>	<b>827</b>	<b>76</b>		<b>504</b>	<b>4,524</b>	<b>32,709</b>	<b>0.14</b>

**Table 25. 2007-2008 Freshwater Salmon Sport Catch by Area and Month**

COASTAL RIVER SYSTEMS																	
System	Stream	CRC Code	Species	2007								2008			Total		
				Apr	May	Jun	Jul	Aug	Sep	Oct	Nov	Dec	Jan	Feb		Mar	
Grays Harbor	Hoquiam River	355	Coho									13				13	
			Total										13				13
	Humptulips River	358	Chinook								543	103					646
			Chum								6						6
			Coho								650	244	44				938
			Chinook Jack								25						25
			Coho Jack							6	101	6	6				119
	Total							6	1,325	353	50				1,734		
	Wishkah River	335	Chinook									6					6
			Coho								25	88	25				138
Coho Jack										13						13	
Total										38	94	25				157	
Chehalis R. System	Chehalis River	315	Chinook	6	18	30					288	12				354	
			Chum								6						6
			Coho								1,034	377	12				1,423
			Chinook Jack			6					42						48
			Coho Jack								221						221
			Total	6	18	36					1,591	389	12				2,052
	Satsop River	329	Coho								544	353	72				969
			Chinook Jack								6						6
			Coho Jack								24						24
			Total								574	353	72				999
	Skookumchuck River	333	Coho									18		24			42
			Coho Jack							6							6
			Total							6		18		24			48
Wynoochee River	337	Coho								132	114	6	12			264	
		Chinook Jack								12						12	
		Total								144	114	6	12			276	
Copalis R. System	Copalis River	339	Coho						23	61	23					107	
			Total						23	61	23						107

Table 25. 2007-2008 Freshwater Salmon Sport Catch by Area and Month (continued)

COASTAL RIVER SYSTEMS																	
System	Stream	CRC Code	Species	2007									2008			Total	
				Apr	May	Jun	Jul	Aug	Sep	Oct	Nov	Dec	Jan	Feb	Mar		
Hoh R. System	Hoh River	348	Chinook		56	6	6	12	25	127	37					269	
			Chum								6					6	
			Coho					6			222	87					315
			Chinook Jack			6		6	6								18
			Total		56	12	6	24	31	349	130						608
Joe Creek System	Joe Creek	323	Coho					8		23						31	
			Total					8		23						31	
Queets R. System	Clearwater River	392	Chinook							23						23	
			Coho							34	11					45	
			Total							57	11					68	
	Queets River	394		Chinook						6	11	28	6				51
				Coho						23	23	51				97	
				Chinook Jack							11						11
				Coho Jack							62	6					68
	Total							91	51	79	6				227		
	Salmon River (Jefferson Co)	396		Coho						11							11
				Total						11							11
Quillayute R. System	Bogachiel River	398	Chinook									19				19	
			Coho				19			45	19					83	
			Sockeye							6						6	
			Coho Jack								13	6				19	
			Total				19		6	58	44					127	
	Calawah River	400		Chinook				26									26
				Coho								19				19	
				Chinook Jack									6			6	
				Total				26					25				51
	Dickey River (Clallam Co)	402		Coho					6								6
				Total					6								6
	Quillayute River	404		Chinook							6	13					19
				Coho					6	6	13	19				44	
Total								6	6	19	32					63	

**Table 25. 2007-2008 Freshwater Salmon Sport Catch by Area and Month (continued)**

COASTAL RIVER SYSTEMS																			
System	Stream	CRC Code	Species	2007									2008			Total			
				Apr	May	Jun	Jul	Aug	Sep	Oct	Nov	Dec	Jan	Feb	Mar				
Quillayute R. System (cont.)	Sol Duc River	406	Chinook	26	19	64	39	6		64	64					6	288		
			Coho			6	19	90	109	425	232							881	
			Sockeye			13	13	6										32	
			Chinook Jack		13	13	19			6								51	
			Coho Jack					6	13	71	13							103	
			<b>Total</b>	<b>26</b>	<b>32</b>	<b>96</b>	<b>90</b>	<b>108</b>	<b>122</b>	<b>566</b>	<b>309</b>							<b>6</b>	<b>1,355</b>
Quinault R. System	Cook Creek	408	Coho							31							31		
			<b>Total</b>								<b>31</b>							<b>31</b>	
	Quinault River	410	Chinook					8								8	16		
			Coho							15							15		
			<b>Total</b>					<b>8</b>		<b>15</b>					<b>8</b>		<b>31</b>		
Waatch R. System	Waatch River	420	Coho							8							8		
			<b>Total</b>								<b>8</b>							<b>8</b>	
Willapa Bay	Naselle River	375	Chinook				6	71	207	272	18						574		
			Coho				6		12	53	24	12						107	
			Sockeye								6								6
			Chinook Jack					6	12										18
			<b>Total</b>				<b>12</b>	<b>77</b>	<b>231</b>	<b>331</b>	<b>42</b>	<b>12</b>							<b>705</b>
	Nemah River	379	Chinook							30	12							42	
			Coho								12							12	
			<b>Total</b>								<b>30</b>	<b>24</b>							<b>54</b>
	North River	382	Coho								6							6	
			Chinook Jack								12								12
			<b>Total</b>									<b>12</b>	<b>6</b>						<b>18</b>
	Smith Creek (Pacific Co)	384	Coho							6	6							12	
			<b>Total</b>								<b>6</b>	<b>6</b>							<b>12</b>
	Willapa River	424	Chinook						95	307	390	35						827	
			Coho					18	77	248	189	24	18					574	
Chinook Jack										18	6							24	
Coho Jack											30	18						48	
<b>Total</b>								<b>113</b>	<b>402</b>	<b>674</b>	<b>242</b>	<b>24</b>	<b>18</b>					<b>1,473</b>	

Table 25. 2007-2008 Freshwater Salmon Sport Catch by Area and Month (continued)

COASTAL RIVER SYSTEMS																
System	Stream	CRC Code	Species	2007									2008			Total
				Apr	May	Jun	Jul	Aug	Sep	Oct	Nov	Dec	Jan	Feb	Mar	
<b>COASTAL RIVER TOTALS</b>			Chinook	32	93	100	77	192	575	1,736	335	6			14	3,160
			Chum							12	6				18	
			Coho			6	44	134	267	3,610	1,881	195	54		6,191	
			Sockeye			13	13	6	6	6					44	
			Chinook Jack		13	25	19	12	48	108	6				231	
			Coho Jack					6	87	479	43	6			621	
			<b>Total</b>	<b>32</b>	<b>106</b>	<b>144</b>	<b>153</b>	<b>350</b>	<b>983</b>	<b>5,951</b>	<b>2,271</b>	<b>207</b>	<b>54</b>	<b>14</b>	<b>10,265</b>	

Table 25. 2007-2008 Freshwater Salmon Sport Catch by Area and Month (continued)

COLUMBIA RIVER SYSTEMS																
System	Stream	CRC Code	Species	2007									2008			Total
				Apr	May	Jun	Jul	Aug	Sep	Oct	Nov	Dec	Jan	Feb	Mar	
Columbia R. Mainstem	B10 Line - Rocky Pt - Tongue Pt Line	519	Chinook					855	404							1,259
			Coho					879	2,501							3,380
			Total					1,734	2,905							4,639
	Columbia - below Bonneville	521	Chinook	2,238	276	1,494		2,679	1,872	93	6			1	2,145	10,804
			Coho					82	322	85	31					520
			Chinook Jack	30	90	159	138	125	225	5					5	777
			Coho Jack						6	8						14
			Total	2,268	366	1,653	138	2,886	2,425	191	37				1	2,150

**Table 25. 2007-2008 Freshwater Salmon Sport Catch by Area and Month (continued)**

COLUMBIA RIVER SYSTEMS																	
System	Stream	CRC Code	Species	2007									2008			Total	
				Apr	May	Jun	Jul	Aug	Sep	Oct	Nov	Dec	Jan	Feb	Mar		
Cowlitz R. System	Cispus River	555	Coho							44	19					63	
			Total							44	19					63	
	Cowlitz R. below Mayfield Dam	561	Chinook	286	137	112	50	336	1,101	57	31	6			31	2,147	
			Coho					149	4,479	2,767	2,003	205	50				9,653
			Chinook Jack	31	12	62	81	124	330	12							652
			Coho Jack					31	392	317	31	25					796
			Total	317	149	174	131	640	6,302	3,153	2,065	236	50			31	13,248
	Cowlitz R. between Mayfield & Cowlitz Falls Dams	563	Chinook	6					31							37	
			Coho							75	6						81
			Chinook Jack							6							6
			Coho Jack							6							6
			Total	6						31	87	6					130
	Cowlitz R. above Cowlitz Falls Dam	559	Chinook		6					12	81					99	
			Coho						19	118	280	118					535
			Chinook Jack									6	6				12
			Coho Jack								37	12	25				74
			Total		6					19	167	379	149				720
	Green River (Cowlitz Co)	565	Chinook					6								6	
			Coho					25	81	398							504
			Total					31	81	398							510
	Tilton River	571	Chinook							31						31	
			Coho							6	106	50					162
			Chinook Jack									6					6
			Coho Jack										6				6
			Total								37	112	56				205
	Toutle River	573	Chinook					6	6							12	
			Coho							62							62
			Total					6	68								74

Table 25. 2007-2008 Freshwater Salmon Sport Catch by Area and Month (continued)

COLUMBIA RIVER SYSTEMS																	
System	Stream	CRC Code	Species	2007									2008			Total	
				Apr	May	Jun	Jul	Aug	Sep	Oct	Nov	Dec	Jan	Feb	Mar		
Cowlitz R. System (cont.)	Toutle River, No Fork	575	Chinook					31	75	12						118	
			Coho					6	180	286			6				478
			Chinook Jack							12							12
			Coho Jack							19							19
			Total					37	286	298			6				627
Lewis R. System	Lewis River	611	Chinook	202	95	6	32	32	13						6	386	
			Coho				6		82	38	82	6				214	
			Chinook Jack	6			6	6								18	
			Coho Jack						6	6						12	
			Total	208	95	6	44	38	101	44	82	6				6	630
	Lewis River, North Fork	615	Chinook	1,613	1,082	146	70	297	582						13	51	3,854
			Coho				6	253	2,366	1,727	1,031	76	13				5,472
			Chinook Jack	19	13	13		32	120								197
			Coho Jack				6	13	285	108	19						431
			Total	1,632	1,095	159	82	595	3,353	1,835	1,050	76	13	13	51		9,954
Lower Columbia	Elochoman River	583	Chinook						18							18	
			Coho					6	49	220	183	6				464	
			Coho Jack						18	6	6					30	
			Total					6	85	226	189	6				512	
	Grays River	595	Chinook		6											6	
			Coho						6	67						73	
			Total		6				6	67						79	
	Grays River, West Fork	596	Coho							409						409	
			Coho Jack							18						18	
			Total							427						427	
	Kalama River	604	Chinook	958	1,013	61	43	183	372							12	2,642
			Coho					31	464	263	12		6			776	
			Chinook Jack	37	12			12	6							67	
Coho Jack							6	12	12						30		
Total			995	1,025	61	43	232	854	275	12		6		12	3,515		



**Table 25. 2007-2008 Freshwater Salmon Sport Catch by Area and Month (continued)**

COLUMBIA RIVER SYSTEMS																
System	Stream	CRC Code	Species	2007									2008			Total
				Apr	May	Jun	Jul	Aug	Sep	Oct	Nov	Dec	Jan	Feb	Mar	
Lower Columbia (cont.)	Washougal River	667	Chinook				12	201	757							970
			Coho						12	12	12				36	
			Chinook Jack					12	6						18	
			<b>Total</b>				12	213	775	12	12				1,024	
<b>LOWER COLUMBIA SYSTEM TOTALS</b>			Chinook	5,303	2,615	1,819	207	4,626	5,231	205	118	6		14	2,245	22,389
			Chum				12	1,431	10,623	6,515	3,765	467	69			22,882
			Coho													
			Chinook Jack	123	127	234	225	311	699	23	12	6			5	1,765
			Coho Jack				6	50	738	518	68	56				1,436
			<b>Total</b>	<b>5,426</b>	<b>2,742</b>	<b>2,053</b>	<b>450</b>	<b>6,418</b>	<b>17,291</b>	<b>7,261</b>	<b>3,963</b>	<b>535</b>	<b>69</b>	<b>14</b>	<b>2,250</b>	<b>48,472</b>

Table 25. 2007-2008 Freshwater Salmon Sport Catch by Area and Month (continued)

COLUMBIA RIVER SYSTEMS																	
System	Stream	CRC Code	Species	2007								2008			Total		
				Apr	May	Jun	Jul	Aug	Sep	Oct	Nov	Dec	Jan	Feb		Mar	
Big White Salmon River	Big White Salmon River	508	Chinook	109	13	6		161	244	13						546	
			Coho					39	238	90						367	
			Chinook Jack	6	6				45								57
			Coho Jack						13	6							19
			Total	115	19	6		200	540	109							989
Klickitat River	Klickitat River	607	Chinook	12	61			85	714	454	12					1,338	
			Coho						61	533	400	121	18			1,133	
			Chinook Jack	6					127	127	6					266	
			Coho Jack						12	79		18				109	
			Total	18	61			85	914	1,193	418	139	18			2,846	
Little White Salmon River & Drano Lake	Little White Salmon River & Drano Lake	618	Chinook	986	547	32	38	197	172	108					6	2,086	
			Coho						76	19						95	
			Chinook Jack	6	146	6		13	51	38						260	
			Coho Jack						6							6	
			Total	992	693	38	38	210	305	165						6	2,447
Mid Columbia	Columbia Bonneville Dam to McNary Dam	527	Chinook	650	19	31	6	219	687	443					19	2,074	
			Coho					12	144	1,424	456	6				2,042	
			Chinook Jack	31	12		6	44	200	119						412	
			Coho Jack						6	19	6					31	
			Total	681	31	31	12	275	1,037	2,005	462	6				19	4,559
Wind R. System	Wind River above Shipherd Falls	677	Chinook	18	258	6										282	
			Chinook Jack		18												18
			Total	18	276	6											300
Wind R. System	Wind River below Shipherd Falls	680	Chinook	553	560	61		6	105	12						1,297	
			Coho					12	61	49						122	
			Chinook Jack	6	160			6	18							190	
			Total	559	720	61		24	184	61							1,609
<b>MIDDLE COLUMBIA SYSTEM TOTALS</b>			Chinook	2,328	1,458	136	44	668	1,922	1,030	12				25	7,623	
			Coho					63	580	2,115	856	127	18		3,759		
			Chinook Jack	55	342	6	6	63	441	284	6				1,203		
			Coho Jack					37	104	6	18				165		
			<b>Total</b>	<b>2,383</b>	<b>1,800</b>	<b>142</b>	<b>50</b>	<b>794</b>	<b>2,980</b>	<b>3,533</b>	<b>880</b>	<b>145</b>	<b>18</b>	<b>25</b>	<b>12,750</b>		

**Table 25. 2007-2008 Freshwater Salmon Sport Catch by Area and Month (continued)**

COLUMBIA RIVER SYSTEMS																	
System	Stream	CRC Code	Species	2007									2008			Total	
				Apr	May	Jun	Jul	Aug	Sep	Oct	Nov	Dec	Jan	Feb	Mar		
Okanogan R. System	Okanogan River	627	Chinook					8	23							31	
			Chinook Jack					8									8
			Total					16	23							39	
	Similkameen River	629	Chinook					23	46							69	
			Total					23	46								69
Upper Columbia	Columbia McNary Dam to Hwy 395 Bridge	533	Chinook			12		6	43	80						141	
			Coho							12	31	6					49
			Chinook Jack							6	37						43
	Total			12		6	49	129	31	6					233		
	Columbia Hwy 395 Bridge-Priest Rapids	535	Chinook		98		6	92	1,270	2,515	6			6	6	3,999	
Coho							18	37	6					6	67		
Chinook Jack			6	18	6	12	55	478	1,153	49	6				1,783		
Coho Jack								25	55						80		
	Total	6	116	6	18	147	1,791	3,760	61	6			6	12	5,929		
	Columbia Priest Rapids to above Grand Coulee	537	Chinook				1,840	883	779	227					3,729		
Chinook Jack						712	276	319	153						1,460		
Total						2,552	1,159	1,098	380						5,189		
Wenatchee R. System	Icicle Creek	672	Chinook		142	110									252		
			Coho		19		26								45		
			Chinook Jack		19	136									155		
			Total		180	246	26								452		
Yakima R. System	Yakima River	690	Chinook						97	140					237		
			Coho						13	16					29		
			Chinook Jack					6	110	104					220		
			Coho Jack							6					6		
			Total					6	220	266					492		
<b>UPPER COLUMBIA SYSTEM TOTALS</b>			Chinook		240	122	1,846	1,012	2,258	2,962	6			6	6	8,458	
	Coho			19		26			31	65	37	6			6	190	
	Chinook Jack	6	37	142	724	345	913	1,447	49	6					3,669		
	Coho Jack							25	61						86		
	<b>Total</b>	<b>6</b>	<b>296</b>	<b>264</b>	<b>2,596</b>	<b>1,357</b>	<b>3,227</b>	<b>4,535</b>	<b>92</b>	<b>12</b>			<b>6</b>	<b>12</b>	<b>12,403</b>		

Table 25. 2007-2008 Freshwater Salmon Sport Catch by Area and Month (continued)

COLUMBIA RIVER SYSTEMS																
System	Stream	CRC Code	Species	2007									2008			Total
				Apr	May	Jun	Jul	Aug	Sep	Oct	Nov	Dec	Jan	Feb	Mar	
Snake R. System	Snake River	640	Chinook		376	41										417
			Chinook Jack		153	48										201
			Total		529	89										618
<b>SNAKE RIVER SYSTEM TOTALS</b>			Chinook		376	41									417	
			Chinook Jack		153	48									201	
			<b>Total</b>		<b>529</b>	<b>89</b>									<b>618</b>	

**Table 25. 2007-2008 Freshwater Salmon Sport Catch by Area and Month (continued)**

PUGET SOUND RIVER SYSTEMS																	
System	Stream	CRC Code	Species	2007									2008			Total	
				Apr	May	Jun	Jul	Aug	Sep	Oct	Nov	Dec	Jan	Feb	Mar		
Chambers Cr. System	Chambers Creek	714	Chinook					8	8							16	
			Coho				8		15								23
			Chinook Jack						8								8
			Coho Jack						8								8
			Total				8	8	39								55
Deschutes R. System	Deschutes River	728	Chinook				6	26	194	45						271	
			Chinook Jack				6	71	168	6							251
			Total				12	97	362	51							522
Dewatto R. System	Dewatto River	732	Coho						52	181						233	
			Total						52	181							233
Dosewallips R. System	Dosewallips River	734	Chum								15					15	
			Total								15					15	
Duckabush R. System	Duckabush River	736	Chum							23	46					69	
			Total							23	46						69
Dungeness R. System	Dungeness River	738	Coho							224	121	218				563	
			Coho Jack							6							6
			Total							230	121	218					569
Elwha R. System	Elwha River	742	Coho							111	12		6			129	
			Total							111	12		6				129
Green-Duwamish R. System	Green - Duwamish River	746	Chinook					75	188	31	38	31				363	
			Chum						19	25	220	31					295
			Pink				13	527	765	251							1,556
			Coho				6	31	671	941	132	6					1,787
			Chinook Jack					6	44	13	6						69
			Coho Jack						157	188							345
			Total				19	639	1,844	1,449	396	68				4,415	
Kennedy Cr. System	Kennedy Creek	754	Chum							544	765					1,309	
			Coho							31							31
			Total							575	765						1,340

Table 25. 2007-2008 Freshwater Salmon Sport Catch by Area and Month (continued)

PUGET SOUND RIVER SYSTEMS																
System	Stream	CRC Code	Species	2007									2008			Total
				Apr	May	Jun	Jul	Aug	Sep	Oct	Nov	Dec	Jan	Feb	Mar	
Lake Washington System	Lake Sammamish	764	Chinook					217	428	12						657
			Coho							6						6
			Total					217	428	18						663
	Lake Washington	762	Coho						72							72
			Total						72							72
McLane Cr. System	McLane Creek	774	Chum							8	46					54
			Total							8	46					54
Minter Cr. System	Minter Creek	778	Chum							18	2,212	1,579				3,809
			Total							18	2,212	1,579				3,809
Nisqually R. System	McAllister Creek	770	Chinook					6	6							12
			Chinook Jack						6							6
			Total					6	12							18
	Nisqually River	786	Chinook				50	657	1,997	352						3,056
			Chum							6	294	2,109	94			2,503
			Pink					63	225							288
			Coho				25	25	551	1,664						2,265
			Chinook Jack					294	789	163						1,246
			Coho Jack					13	200	200	13					426
			Total				75	1,052	3,762	2,385	307	2,109	94			9,784
Nooksack Samish R. System	Dakota Creek (Whatcom Co)	724	Chinook							44						44
			Coho								181	25				206
			Total							225	25				250	
	Nooksack River	788	Chinook					12	144							156
			Chum							112	106	56				274
			Pink							6						6
			Coho							112	450	194	12			768
			Chinook Jack							6						6
			Coho Jack								12					12
			Total					12	274	568	300	68			1,222	

**Table 25. 2007-2008 Freshwater Salmon Sport Catch by Area and Month (continued)**

PUGET SOUND RIVER SYSTEMS																
System	Stream	CRC Code	Species	2007									2008			Total
				Apr	May	Jun	Jul	Aug	Sep	Oct	Nov	Dec	Jan	Feb	Mar	
Nooksack Samish R. System (cont.)	Samish River	816	Chinook					793	5,107	206						6,106
			Chum						6		6				12	
			Pink					31	87	6					124	
			Coho					6	194	56					256	
			Chinook Jack				6	125	693						824	
			Coho Jack					6	31						37	
			Total				6	961	6,118	268	6				7,359	
	Whatcom Creek	884	Chinook					6	19	19	19	12				75
			Chum							50	106				156	
			Pink					81	44	6					131	
			Coho						12	6	12				30	
			Chinook Jack						6						6	
			Coho Jack							12					12	
			Total					87	81	93	137	12			410	
Puyallup R. System	Carbon River	802	Chinook					80	671	25	6				782	
			Chum								6				6	
			Pink					216	5,058	276					5,550	
			Coho					12	612	636	105				1,365	
			Chinook Jack						43						43	
			Coho Jack						25	74					99	
			Total					308	6,409	1,011	117				7,845	
	Puyallup River	804	Chinook					315	926	62					1,303	
			Chum						93	12	117	80			302	
			Pink				12	2,175	14,322	197	37				16,743	
			Coho				12	796	6,167	623	420	25			8,043	
			Chinook Jack					12	142	12					166	
			Coho Jack					56	457	68	12				593	
			Total				24	3,354	22,107	974	586	105			27,150	
Quilcene R. System	Quilcene River	812	Coho					323	802	60					1,185	
			Coho Jack					12	12						24	
			Total					335	814	60					1,209	

Table 25. 2007-2008 Freshwater Salmon Sport Catch by Area and Month (continued)

PUGET SOUND RIVER SYSTEMS																
System	Stream	CRC Code	Species	2007									2008			Total
				Apr	May	Jun	Jul	Aug	Sep	Oct	Nov	Dec	Jan	Feb	Mar	
Skagit R. System	Cascade River	826	Chinook		6	541	55				6				608	
			Coho						289	1,107	178				1,574	
			Chinook Jack			6									6	
			Coho Jack								18				18	
			Total		6	547	55		289	1,131	178				2,206	
	Skagit River	830	Chinook		43	135	25	6							209	
			Chum							105	394	25			524	
			Pink					25							25	
			Coho					12	1,021	1,636	431	68			3,168	
			Sockeye			37	129								166	
			Chinook Jack		6	25				6	6				43	
			Coho Jack								31				31	
			Total		49	197	154	43	1,027	1,778	825	93			4,166	
			Skokomish R. System	Skokomish River	834	Chinook				188	3,988	1,030				
Chum										846	819			1,665		
Pink								6						6		
Coho								73	311	1,157	522	6		2,069		
Chinook Jack							18	255	127					400		
Coho Jack								18		42	18			78		
Total							206	4,340	1,468	2,045	1,359	6			9,424	
Snohomish R. System	Skykomish River	844				Chinook		19	241	291						
			Chum							87	291			378		
			Pink					2,314	3,780	377				6,471		
			Coho					25	173	1,349	223	37		1,807		
			Chinook Jack			37	37							74		
	Total		19	278	328	2,339	3,953	1,813	514	37		9,281				
	Snohomish River	850	Chum					87	68	118	80			353		
			Pink					24,843	17,878	291				43,012		
			Coho					161	798	2,820	155	6		3,940		
			Coho Jack							31	43	12		86		
Total							25,091	18,775	3,272	247	6		47,391			



**Table 25. 2007-2008 Freshwater Salmon Sport Catch by Area and Month (continued)**

PUGET SOUND RIVER SYSTEMS															
System	Stream	CRC Code	Species	2007								2008			Total
				Apr	May	Jun	Jul	Aug	Sep	Oct	Nov	Dec	Jan	Feb	
Snohomish R. System (cont.)	Snoqualmie River	852	Chum							6					6
			Pink					6	49	6					61
			Coho						12	334	111	12			469
			<b>Total</b>					6	61	346	111	12			536
	Stillaguamish River	872	Chum								43	25			68
			Pink						4,844	87					4,931
			Coho						520	1,318	198	25			2,061
			Coho Jack								6				6
<b>Total</b>						5,364	1,454	223	25			7,066			
Tahuya R. System	Tahuya River	878	Coho						8	46				54	
			<b>Total</b>						8	46				54	
<b>PUGET SOUND RIVER TOTALS</b>			Chinook		68	917	615	6,189	10,718	802	63	43		19,415	
			Chum					87	186	2,003	5,548	3,880	94	11,798	
			Pink				25	30,287	47,052	1,503	37			78,904	
			Coho				51	1,464	12,392	14,937	2,839	415	6	32,104	
			Sockeye			37	129							166	
			Chinook Jack		6	68	67	763	2,038	200	6			3,148	
			Coho Jack					105	933	688	55			1,781	
			<b>Total</b>		<b>74</b>	<b>1,022</b>	<b>887</b>	<b>38,895</b>	<b>73,319</b>	<b>20,133</b>	<b>8,548</b>	<b>4,338</b>	<b>100</b>	<b>147,316</b>	

Table 26. 2007-2008 Salmon Sport Catch, Unknown Area, by Month

UNKNOWN AREAS																
System	Stream	CRC Code	Species	2007									2008			Total
				Apr	May	Jun	Jul	Aug	Sep	Oct	Nov	Dec	Jan	Feb	Mar	
<b>UNKNOWN TOTALS</b>			Chinook	6	12	12	69	97	147	64	30	12		24	42	515
			Chum				6	49	18	6	36	6				121
			Pink				81	631	367	32	18					1,147
			Coho			6	56	133	184	219	30					634
			Sockeye					6								6
			Chinook Jack				12	6		18	6	6				48
			Coho Jack				6	6	6	12						30
			<b>Total</b>	<b>30</b>	<b>12</b>	<b>18</b>	<b>230</b>	<b>928</b>	<b>722</b>	<b>351</b>	<b>120</b>	<b>24</b>		<b>24</b>	<b>42</b>	<b>2,501</b>

**Table 27. 2007-2008 Washington Sport Salmon Fishing, by Residence**

County of Residence	Number Catch Record Cards	Population by County	% Catch Record Card Holders	Total Freshwater Salmon Catch	Total Marine Salmon Catch	Total Salmon	Average Catch per Card
Adams	1,732	16,943	10.2	454	312	766	0.44
Asotin	3,044	21,167	14.4	60	71	131	0.04
Benton	20,902	159,444	13.1	4,434	3,041	7,475	0.36
Chelan	7,665	70,677	10.8	2,825	1,412	4,237	0.55
Challam	11,028	70,272	15.7	1,597	20,408	22,005	2
Clark	44,749	416,662	10.7	17,036	10,377	27,413	0.61
Columbia	763	3,954	19.3	67	158	225	0.29
Cowlitz	20,847	100,557	20.7	11,634	4,164	15,798	0.76
Douglas	3,816	36,322	10.5	738	427	1,165	0.31
Ferry	382	7,362	5.2	48	276	324	0.85
Franklin	7,658	69,518	11.0	937	461	1,398	0.18
Garfield	440	2,091	21.0	60		60	0.14
Grant	5,618	83,111	6.8	992	1,469	2,461	0.44
Grays Harbor	11,970	71,343	16.8	3,376	6,282	9,658	0.81
Island	13,400	80,860	16.6	2,256	17,575	19,831	1.48
Jefferson	4,581	29,273	15.6	653	6,848	7,501	1.64
King	103,940	1,860,000	5.6	32,015	58,837	90,852	0.87
Kitsap	24,752	238,087	10.4	2,698	21,590	24,288	0.98
Kittitas	3,361	38,384	8.8	411	1,762	2,173	0.65
Klickitat	3,456	20,109	17.2	2,124	429	2,553	0.74
Lewis	12,519	73,699	17.0	6,062	4,358	10,420	0.83
Lincoln	855	10,266	8.3	224	587	811	0.95
Mason	8,025	56,823	14.1	1,942	5,765	7,707	0.96
Okanogan	4,558	39,589	11.5	980	312	1,292	0.28
Pacific	4,506	21,458	21.0	2,027	5,959	7,986	1.77
Pend Oreille	578	12,792	4.5	36	473	509	0.88
Pierce	70,022	774,049	9.0	39,492	40,943	80,435	1.15
San Juan	2,304	15,280	15.1	18	1,180	1,198	0.52
Skagit	16,603	116,261	14.3	8,954	5,314	14,268	0.86
Skamania	1,564	10,749	14.6	659	221	880	0.56
Snohomish	69,664	675,805	10.3	48,017	38,212	86,229	1.24
Spokane	19,519	456,187	4.3	3,454	3,757	7,211	0.37
Stevens	2,003	41,953	4.8	399	302	701	0.35
Thurston	25,284	238,717	10.6	12,813	11,914	24,727	0.98
Wahkiakum	1,307	3,985	32.8	980	515	1,495	1.14
Walla Walla	5,788	57,509	10.1	835	494	1,329	0.23
Whatcom	17,800	192,843	9.2	4,507	3,679	8,186	0.46
Whitman	2,479	41,084	6.0	230	440	670	0.27
Yakima	20,836	232,288	9.0	4,671	4,901	9,572	0.46
Unknown WA	1,832			810	591	1,401	0.76
<b>Washington Total</b>	<b>582,150</b>	<b>6,460,000</b>	<b>9.0</b>	<b>221,524</b>	<b>285,816</b>	<b>507,340</b>	<b>0.87</b>
Other State Total	56,584			12,710	25,254	37,964	0.67
Canada	1,670			60	351	411	0.25
Other	490			6	15	21	0.04
<b>Grand Total</b>	<b>640,894</b>			<b>234,301</b>	<b>311,436</b>	<b>545,737</b>	<b>0.85</b>

Note: The figures do not accurately multiply across because of the bias adjustment factor and rounding of numbers.

Source: Table 1: Annual Estimates of the Resident Population for Counties of Washington: April 1, 2000 to July 1, 2009 (CO-EST2009-01-53). Source: Population Division, U.S. Census Bureau. Release Date: March, 2010.

Table 28. 2007-2008 Frequency Distribution of Estimated Salmon Catch Record Cards and Catch

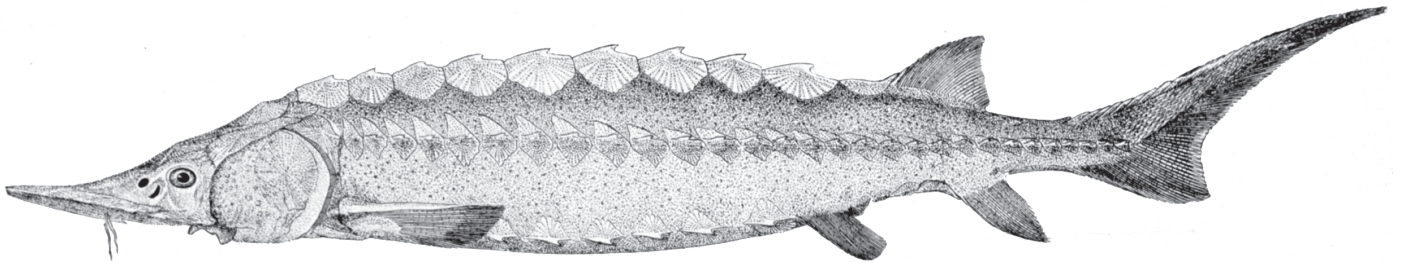
#Salmon per Catch Record Card	Number of Cards	Cumulative Number of Cards	Percent Cards	Cumulative Percent Cards	Total Catch	Cumulative Total Catch	Percent Catch	Cumulative Percent Catch
0	534,904	534,904	79.44%	79.44%	0	0	0.00%	0.00%
1	27,111	562,015	5.26%	84.70%	27,111	27,111	4.97%	4.97%
2	22,811	584,826	4.42%	89.12%	45,622	72,733	8.36%	13.33%
3	10,479	595,305	2.03%	91.15%	31,437	104,170	5.76%	19.09%
4	9,375	604,680	1.82%	92.97%	37,500	141,670	6.87%	25.96%
5	5,578	610,258	1.08%	94.05%	27,890	169,560	5.11%	31.07%
6	4,901	615,159	0.95%	95.00%	29,406	198,966	5.39%	36.46%
7	3,407	618,566	0.66%	95.66%	23,849	222,815	4.37%	40.83%
8	3,533	622,099	0.68%	96.35%	28,264	251,079	5.18%	46.01%
9	2,357	624,456	0.46%	96.80%	21,213	272,292	3.89%	49.90%
10	2,063	626,519	0.40%	97.20%	20,630	292,922	3.78%	53.68%
11	1,649	628,168	0.32%	97.52%	18,139	311,061	3.32%	57.00%
12	1,692	629,860	0.33%	97.85%	20,304	331,365	3.72%	60.72%
13	1,116	630,976	0.22%	98.07%	14,508	345,873	2.66%	63.38%
14	1,110	632,086	0.22%	98.28%	15,540	361,413	2.85%	66.23%
15	942	633,028	0.18%	98.46%	14,130	375,543	2.59%	68.82%
16	870	633,898	0.17%	98.63%	13,920	389,463	2.55%	71.37%
17	714	634,612	0.14%	98.77%	12,138	401,601	2.22%	73.59%
18	648	635,260	0.13%	98.90%	11,664	413,265	2.14%	75.73%
19	648	635,908	0.13%	99.02%	12,312	425,577	2.26%	77.99%
20	618	636,526	0.12%	99.14%	12,360	437,937	2.26%	80.25%
21	420	636,946	0.08%	99.22%	8,820	446,757	1.62%	81.87%
22	390	637,336	0.08%	99.30%	8,580	455,337	1.57%	83.44%
23	396	637,732	0.08%	99.38%	9,108	464,445	1.67%	85.11%
24	384	638,116	0.07%	99.45%	9,216	473,661	1.69%	86.80%
25	426	638,542	0.08%	99.53%	10,650	484,311	1.95%	88.75%
26	2,171	640,713	0.42%	99.95%	56,446	540,757	10.34%	99.09%
27	120	640,833	0.02%	99.98%	3,240	543,997	0.59%	99.68%
28	36	640,869	0.01%	99.98%	1,008	545,005	0.18%	99.86%
29	6	640,875	0.00%	99.98%	174	545,179	0.03%	99.89%
30	12	640,887	0.00%	99.99%	360	545,539	0.07%	99.96%
33	6	640,893	0.00%	99.99%	198	545,737	0.04%	100.00%
<b>Total</b>	<b>640,893</b>		<b>100.00%</b>		<b>545,737</b>		<b>100.00%</b>	

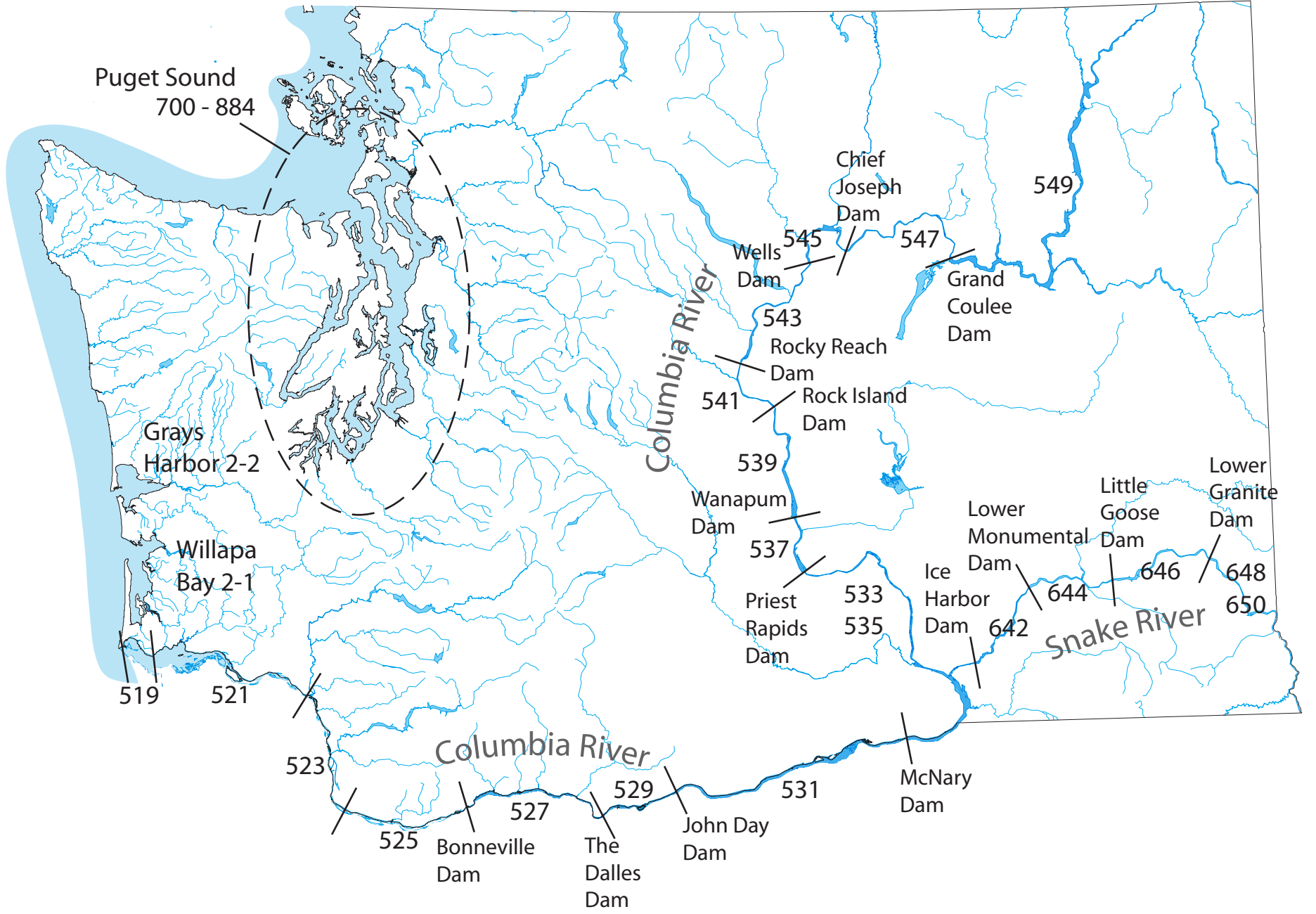
Table 29. 2007-2008 Sport Salmon Inventory of Catch Record Cards Received

Response Type	With Catch		No catch		Total Cards & Letters	Number of Salmon			Catch per Card		
	Catch Records	Reminder Letters	Catch Records	Reminder Letters		Catch Records	Reminder Letters	Total	Catch Records	Reminder Letters	Total
Prior to reminder	1,753		3,312		5,065	7,843		7,843	1.55		1.55
After reminder postcard	10,919		29,970		40,889	60,877		60,877	1.47		1.47
After 1st reminder letter	2,506	1,531	7,665	25,904	37,606	12,529	5,539	18,068	1.23	0.20	0.48
From license dealer	868		1,094	105	2,067	3,775		3,775	1.92		1.83
<b>Total</b>	<b>16,046</b>	<b>1,531</b>	<b>42,041</b>	<b>26,009</b>	<b>85,627</b>	<b>85,024</b>	<b>5,539</b>	<b>90,563</b>	<b>1.45</b>	<b>0.20</b>	<b>0.52</b>



# Sturgeon







# DESCRIPTION OF STURGEON CATCH RECORD CARD AREAS

---

## Columbia River

519	Buoy 10 to Megler - Astoria Bridge
521	Megler - Astoria Bridge to Longview Bridge
523	Longview Bridge to I-5 Bridge
525	I-5 Bridge to Bonneville Dam
527	Bonneville to the Dalles Dam
529	The Dalles Dam to John Day Dam
531	John Day to McNary Dam
533	McNary Dam to Pasco
535	Pasco to Priest Rapids Dam
537	Priest Rapids Dam to Wanapum Dam
539	Wanapum to Rock Island Dam
541	Rock Island to Rocky Reach Dam
543	Rocky Reach to Wells Dam
545	Wells to Chief Joseph Dam
547	Chief Joseph to Grand Coulee Dam
549	Grand Coulee Dam to Canadian Border

## Snake River

640	Below Ice Harbor Dam
642	Ice Harbor to Lower Monumental Dam
644	Lower Monumental to Little Goose Dam
646	Little Goose to Lower Granite Dam
648	Lower Granite to Clarkston
650	Upstream of Interstate Bridge, Clarkston

## Other - including Puget Sound

2-1	Willapa Bay
2-2	Grays Harbor
700 - 884	Puget Sound

Table 30. 2007-2008 Sport Sturgeon Catch, by Area and Month

COASTAL RIVER SYSTEMS															
Catch Area	Species	2007										2008			Total
		Apr	May	Jun	Jul	Aug	Sep	Oct	Nov	Dec	Jan	Feb	Mar		
Area 2-1: Willapa Bay	White												7		7
Area 2-2: Grays Harbor	White			7											7
Chehalis R. above Black R.	White					7									7
Chehalis R. below Black R.	White	7	15	37	15		7	15	7						105
Naselle River	White		7	7		7			7		45	7	15	7	105
Willapa River	White		7	7								7	75		97
<b>Coastal River Totals</b>	White	7	30	60	15	15	7	15	15	45	15	97	7		330
	<b>Total</b>	<b>7</b>	<b>30</b>	<b>60</b>	<b>15</b>	<b>15</b>	<b>7</b>	<b>15</b>	<b>15</b>	<b>45</b>	<b>15</b>	<b>97</b>	<b>7</b>		<b>330</b>

Table 30. 2007-2008 Sport Sturgeon Catch, by Area and Month (continued)

COLUMBIA RIVER SYSTEMS															
Catch Area	Species	2007										2008			Total
		Apr	May	Jun	Jul	Aug	Sep	Oct	Nov	Dec	Jan	Feb	Mar		
Columbia R 01: Buoy 10 to Megler-Astoria Br.	White Green	3	533	4,605	599										5,740 3
Columbia R 02: Megler-Astoria Br. to Longview Br.	White Green	14	558	4,741	655	13	45			5					6,031 2
Columbia R 03: Longview Br. to I-5 Br.	White	139	262	86	33	16	100	52	57	3	22	30	16		816
Columbia R 04: I-5 Br. to Bonneville Dam	White	96	203	68	17	440	837	1,102	346	5		1	4		3,119
Columbia R 05: Bonneville to The Dalles Dam	White	5		65	168						34	12	25		309
Columbia R 06: The Dalles to John Day Dam	White												22		22
Columbia R 07: John Day to McNary Dam	White	9		7										40	56
Columbia R 08: McNary Dam - Hwy 395 Bridge @ Pasco	White					22	22	15	7	15					82
Columbia R 09: Hwy 395 Bridge to Priest Rapids Dam	White	7			30	22	37	30	7	15	7				157
Cowlitz R. below Mayfield Dam	White	37	45	37	15	15	7	7		37	7	22	75		307
Deep River (Wahkiakum Co.)	White			30								75	37		142
Lewis River, North Fork	White											7			7
Snake R 2: Ice Harbor to Lwr Monumental Dam	White		7	15	7	22									52
Snake R 3: Lower Monumental to Little Goose Dam	White			15											15
Snake R 4: Little Goose to Lower Granite Dam	White		15	15	37	30	22								120
<b>Columbia River Totals</b>	White Green <b>Total</b>	310 310	1,623 1,623	9,684 9,689	1,561 1,561	580 580	1,070 1,070	1,206 1,206	417 417	80 80	70 70	147 147	219 219		16,975 16,980

Table 30. 2007-2008 Sport Sturgeon Catch, by Area and Month (continued)

PUGET SOUND RIVER SYSTEMS															
Catch Area	Species	2007										2008			Total
		Apr	May	Jun	Jul	Aug	Sep	Oct	Nov	Dec	Jan	Feb	Mar		
<b>Area 8-2: Port Susan-Port Gardner</b>	White	60	30	45	7	7					7		22	7	187
Skagit River	White				15										15
Snohomish River	White		7	7	15	7						15	30	22	105
Stillaguamish River	White	7	7	22	22	15	37	7							120
Union River	White				15										15
<b>Puget Sound River Totals</b>	White	67	45	75	75	30	37	7	7			15	52	30	442
	<b>Total</b>	<b>67</b>	<b>45</b>	<b>75</b>	<b>75</b>	<b>30</b>	<b>37</b>	<b>7</b>	<b>7</b>			<b>15</b>	<b>52</b>	<b>30</b>	<b>442</b>

Table 30. 2007-2008 Sport Sturgeon Catch, by Area and Month (continued)

UNKNOWN AREAS															
Catch Area	Species	2007										2008			Total
		Apr	May	Jun	Jul	Aug	Sep	Oct	Nov	Dec	Jan	Feb	Mar		
<b>Unknown Area Totals</b>	White	15	15	82	15	7	7	30	15					22	210
	<b>Total</b>	<b>15</b>	<b>15</b>	<b>82</b>	<b>15</b>	<b>7</b>	<b>7</b>	<b>30</b>	<b>15</b>					<b>22</b>	<b>210</b>

Table 30. 2007-2008 Sport Sturgeon Catch, by Area and Month (continued)

STATEWIDE TOTALS															
Catch Area	Species	2007										2008			Total
		Apr	May	Jun	Jul	Aug	Sep	Oct	Nov	Dec	Jan	Feb	Mar		
<b>Statewide Totals</b>	White	399	1,713	9,901	1,666	632	1,121	1,258	454	125		100	296	278	17,957
	Green			5											5
	<b>Total</b>	<b>399</b>	<b>1,713</b>	<b>9,906</b>	<b>1,666</b>	<b>632</b>	<b>1,121</b>	<b>1,258</b>	<b>454</b>	<b>125</b>		<b>100</b>	<b>296</b>	<b>278</b>	<b>17,962</b>

**Table 31. 2007-2008 Washington Sport Sturgeon Fishing, by Residence**

County of Residence	Number Catch Record Cards	Population by County	% Catch Record Holders	Total Sturgeon	Average Catch per Catch Record Card
Adams	1,732	16,943	10.2		
Asotin	3,044	21,167	14.4	7	0.00
Benton	20,902	159,444	13.1	360	0.02
Chelan	7,665	70,677	10.8	53	0.01
Clallam	11,028	70,272	15.7	153	0.01
Clark	44,749	416,662	10.7	3,798	0.08
Columbia	763	3,954	19.3	7	0.01
Cowlitz	20,847	100,557	20.7	2,098	0.10
Douglas	3,816	36,322	10.5	7	0.00
Ferry	382	7,362	5.2		
Franklin	7,658	69,518	11.0	53	0.01
Garfield	440	2,091	21.0	22	0.05
Grant	5,618	83,111	6.8	99	0.02
Grays Harbor	11,970	71,343	16.8	559	0.05
Island	13,400	80,860	16.6	68	0.01
Jefferson	4,581	29,273	15.6	176	0.04
King	103,940	1,860,000	5.6	1187	0.01
Kitsap	24,752	238,087	10.4	206	0.01
Kittitas	3,361	38,384	8.8	46	0.01
Klickitat	3,456	20,109	17.2	153	0.04
Lewis	12,519	73,699	17.0	957	0.08
Lincoln	855	10,266	8.3	31	0.04
Mason	8,025	56,823	14.1	206	0.03
Okanogan	4,558	39,589	11.5	15	0.00
Pacific	4,506	21,458	21.0	1,531	0.34
Pend Oreille	578	12,792	4.5		
Pierce	70,022	774,049	9.0	1371	0.02
San Juan	2,304	15,280	15.1	7	0.00
Skagit	16,603	116,261	14.3	145	0.01
Skamania	1,564	10,749	14.6	99	0.06
Snohomish	69,664	675,805	10.3	1033	0.01
Spokane	19,519	456,187	4.3	252	0.01
Stevens	2,003	41,953	4.8	15	0.01
Thurston	25,284	238,717	10.6	643	0.03
Wahkiakum	1,307	3,985	32.8	237	0.18
Walla Walla	5,788	57,509	10.1	68	0.01
Whatcom	17,800	192,843	9.2	130	0.01
Whitman	2,479	41,084	6.0		
Yakima	20,836	232,288	9.0	261	0.01
Unknown WA	1,832			46	0.03
<b>Washington Total</b>	<b>582,150</b>	<b>6,460,000</b>	<b>9.0</b>	<b>16,099</b>	<b>0.03</b>
Other State Total	56,584			1,386	0.02
Canada	1,670				
Other	490				
<b>Grand Total</b>	<b>640,894</b>			<b>17,485</b>	<b>0.03</b>

Note: The figures do not accurately multiply across because of the bias adjustment factor and rounding of numbers.

Source: Table 1: Annual Estimates of the Resident Population for Counties of Washington: April 1, 2000 to July 1, 2009

(CO-EST2009-01-53). Source: Population Division, U.S. Census Bureau. Release Date: March, 2010.

Table 32. 2007-2008 Frequency Distribution of Estimated Sturgeon Catch Record Cards and Catch

#Sturgeon per Catch Record Card	Number of Cards	Cumulative Number of Cards	Percent Cards	Cumulative Percent Cards	Total Catch	Cumulative Total Catch	Percent Catch	Cumulative Percent Catch
0	629,698	629,698	98.10%	98.10%	0	0	0.00%	0.00%
1	7,572	637,270	1.18%	99.27%	7,572	7,572	43.30%	43.30%
2	2,014	639,284	0.31%	99.58%	4,028	11,600	23.03%	66.33%
3	861	640,145	0.13%	99.72%	2,583	14,183	14.77%	81.10%
4	434	640,579	0.07%	99.78%	1,736	15,919	9.92%	91.02%
5	314	640,893	0.05%	99.83%	1,570	17,489	8.98%	100.01%
<b>Total</b>	<b>640,893</b>		<b>99.83%</b>		<b>17,489</b>		<b>100.00%</b>	

Table 33. 2007-2008 Sport Sturgeon Inventory of Catch Record Cards Received

Response Type	With Catch		No catch		Total Cards & Letters	Number of Sturgeon			Catch per Card		
	Catch Records	Reminder Letters	Catch Records	Reminder Letters		Catch Records	Reminder Letters	Total	Catch Records	Reminder Letters	Total
Prior to reminder	106		4,909		5,015	148		148	0.03		0.03
After reminder postcard	912		39,753		40,665	1,496		1,496	0.04		0.04
After 1st reminder letter	250	107	9,856	27,425	37,638	361	157	518	0.04	0.01	0.01
From license dealer	105		1,839	105	2,049	140		140	0.07		0.07
<b>Total</b>	<b>1,373</b>	<b>107</b>	<b>56,357</b>	<b>27,530</b>	<b>85,367</b>	<b>2,145</b>	<b>157</b>	<b>2,302</b>	<b>0.04</b>	<b>0.01</b>	<b>0.03</b>

# Steelhead

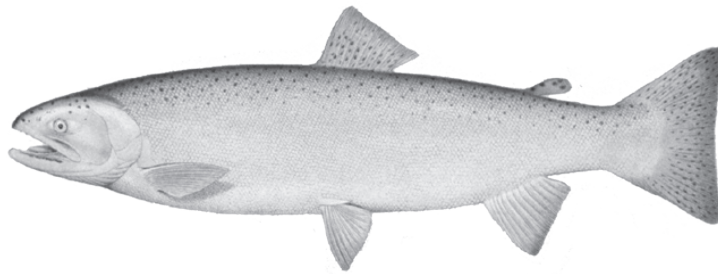


Table 34. 2007-2008 Steelhead Sport Catch, by Area and Month

COASTAL RIVERS AND MARINE CATCH AREAS																		
System	Water	Race	Mark	2007									2008			Total		
				Apr	May	Jun	Jul	Aug	Sep	Oct	Nov	Dec	Jan	Feb	Mar			
Bear R. System	Bear River (Pacific Co.)	W	Marked												3		3	
Chehalis R. System *	Chehalis R. above Black R.	S	Marked				3										3	
		W	Marked	5								3	3		5		16	
	Chehalis R. below Black R.	S	Marked				14	3	6	3							26	
		W	Marked									3	3		76	46	18	146
	Chehalis River, So. Fork	S	Marked				3	3									6	
		W	Marked													3	3	6
	Cloquallam Creek	W	Marked														5	5
	Newaukum River	W	Marked												18	41	43	102
	Satsop River	S	Marked								8							8
		W	Marked										3	23	177	284	274	761
	Satsop River, West Fork	S	Marked							6								6
		W	Marked												13	20		33
	Skookumchuck River	S	Marked				3				3	6						12
		W	Marked	48										3	8	362	261	205
	Van Winkle Creek	S	Marked				6	3	3	3								15
	Wishkah River	W	Marked													5	3	8
Wynoochee River	S	Marked				225	258	277	158	72							990	
	W	Marked										33	106	722	611	309	1,781	
Chehalis R. System Totals	S	Marked				234	281	286	176	89							1,066	
	W	Marked	53										45	143	1,368	1,276	860	3,745
Copalis R. System *	Copalis River	W	Marked											5	3	3	11	
Goodman Cr. System *	Goodman Creek (Jefferson Co.)	S	Marked							3							3	
		W	Marked											5	3	3	11	



**Table 34. 2007-2008 Steelhead Sport Catch, by Area and Month (continued)**

COASTAL RIVERS AND MARINE CATCH AREAS																	
System	Water	Race	Mark	2007									2008			Total	
				Apr	May	Jun	Jul	Aug	Sep	Oct	Nov	Dec	Jan	Feb	Mar		
Hoh R. System *	Hoh River above Hwy 101	S	Marked				2	15	19	5						41	
		W	Marked	3								3	22	19	3	50	
			Unmarked										3			3	
			Total	3								3	25	19	3	53	
	Hoh River below Hwy 101	S	Marked		5	10	7	43	22	5						92	
			Unmarked				5									5	
			Total		5	10	7	48	22	5						97	
		W	Marked	28								63	35	38	92	57	313
			Unmarked	32									6	13	66	82	199
			Total	60								63	41	51	158	139	512
	Hoh R. System Totals	S	Marked		5	10	9	58	41	10						133	
			Unmarked				5									5	
			Total		5	10	9	63	41	10						138	
		W	Marked	31								63	38	60	111	60	363
Unmarked			32									6	16	66	82	202	
Total			63								63	44	76	177	142	565	
Hoquiam R. System *	Hoquiam River	W	Marked								5				5		
Humptulips R. System *	Humptulips River	S	Marked			47	45	89	2	16					199		
		W	Marked								41	139	69	17	10	276	
	Stevens Creek	W	Marked								14	17			31		
	Humptulips R. System Totals	S	Marked			47	45	89	2	16					199		
		W	Marked								41	153	86	17	10	307	
Joe Creek System *	Joe Creek	S	Marked				1		1						2		
Johns R. System *	Johns River	W	Marked									5	3		8		
Marine Water	Area 1: Col R - Ledbetter	S	Marked					3							3		

Table 34. 2007-2008 Steelhead Sport Catch, by Area and Month (continued)

COASTAL RIVERS AND MARINE CATCH AREAS																	
System	Water	Race	Mark	2007									2008			Total	
				Apr	May	Jun	Jul	Aug	Sep	Oct	Nov	Dec	Jan	Feb	Mar		
Marine Water *	Area 2: Westport	S	Marked					3								3	
	Area 2-2: Grays Harbor	S	Marked				3	3								6	
	Area 4: Cape Flattery	S	Marked				3									3	
	Marine Water Totals	S	Marked				6	6								12	
Moclips R. System *	Moclips River	W	Marked										3	5		8	
Mosquito Cr. System *	Mosquito Creek (Jefferson Co.)	W	Marked									3				3	
Naselle R. System	Naselle River	S	Marked					1		1						2	
		W	Marked								10	13	18	3	5	49	
Nemah R. System	Nemah River	W	Marked									5	5	3		13	
North R. System	North River	W	Marked									3	3	8		14	
	Smith Creek (Pacific Co.)	W	Marked											15		15	
	North R. System Totals	W	Marked									3	3	8	15	29	
Ozette R. System *	Big River (Clallam Co.)	W	Marked											5		5	
Queets R. System *	Clearwater River	W	Marked	7									4	7	7	14	39
			Unmarked	7											25	70	102
			Total	14										4	7	32	84
	Queets River	W	Marked									42	4	18	14		78
			Unmarked													4	4
			Total									42	4	18	14	4	82
	Salmon River (Jefferson Co.)	S	Marked				4	4									8
		W	Marked									21	67	11	14		113
			Unmarked												4		4
			Total									21	67	11	18		117

**Table 34. 2007-2008 Steelhead Sport Catch, by Area and Month (continued)**

COASTAL RIVERS AND MARINE CATCH AREAS																	
System	Water	Race	Mark	2007									2008			Total	
				Apr	May	Jun	Jul	Aug	Sep	Oct	Nov	Dec	Jan	Feb	Mar		
Queets R. System * (cont.)	Queets R. System Totals	S	Marked				4	4								8	
		W	Marked	7							63	75	36	35	14	230	
			Unmarked	7											29	74	110
			Total	14								63	75	36	64	88	340
Quillayute R. System *	Bogachiel River	S	Marked			27	56	65	8	5						161	
			Unmarked				3	3								6	
			Total			27	59	68	8	5							167
		W	Marked	18								247	321	33	37	18	674
			Unmarked	41									4	4	44	48	141
			Total	59								247	325	37	81	66	815
	Calawah River	S	Marked			157	146	114	46	149							612
			W	Marked	11							66	118	7	8		210
		W	Unmarked	7									4		22	4	37
			Total	18								66	122	7	30	4	247
	Dickey River (Clallam Co.)	S	Marked			3											3
		W	Marked										4	11			15
			Unmarked													4	4
			Total											4	11	4	19
Quillayute River	S	Marked				3	3		3							9	
	W	Marked									18	44	22	15	4	103	
		Unmarked											4	15	7	22	48
		Total										18	48	37	22	26	151
Sol Duc River	S	Marked			22	70	124	70	32	46						364	
		W	Marked	26								15	44	63	55	11	214
	W	Unmarked	33										15	26	78	144	296
		Total	59										15	59	89	133	155

Table 34. 2007-2008 Steelhead Sport Catch, by Area and Month (continued)

COASTAL RIVERS AND MARINE CATCH AREAS																		
System	Water	Race	Mark	2007									2008			Total		
				Apr	May	Jun	Jul	Aug	Sep	Oct	Nov	Dec	Jan	Feb	Mar			
Quillayute R. System * (cont.)	Quillayute R. System Totals	S	Marked		22	257	329	252	86	203							1,149	
			Unmarked				3	3									6	
			Total		22	257	332	255	86	203								1,155
		W	Marked	55								346	527	129	126	33		1,216
			Unmarked	81									27	45	151	222		526
			Total	136								346	554	174	277	255		1,742
Quinault R. System *	Cook Creek	W	Marked	3												3		
	Quinault Lake	S	Marked			1											1	
		W	Marked								3						3	
	Quinault R, Lower (below L. Quinault, not Cook Cr.)	S	Marked				1				2						3	
		W	Unmarked											3	5		8	
	Quinault R, Upper (above L. Quinault)	S	Marked						1	1							2	
		W	Marked	3										5	5	16	29	
			Unmarked	5											10	15	30	
			Total	8											5	15	31	59
	Quinault R. System Totals	S	Marked			1	1	1	1	1	2						6	
		W	Marked	6								3		5	5	16	35	
			Unmarked	5											13	20	38	
Total			11								3		5	18	36	73		
Suez R. System *	Sooes River (Clallam Co.)	S	Marked			1	1									2		
Willapa R. System	Willapa R, So. Fork	W	Marked								4	37	17			58		
		S	Marked							8						8		
	Willapa River	W	Marked								50	74	62	41	66	293		
		S	Marked							8						8		
Willapa R. System Totals	W	Marked								54	111	79	41	66	351			

**Table 34. 2007-2008 Steelhead Sport Catch, by Area and Month (continued)**

COASTAL RIVERS AND MARINE CATCH AREAS																
System	Water	Race	Mark	2007									2008			Total
				Apr	May	Jun	Jul	Aug	Sep	Oct	Nov	Dec	Jan	Feb	Mar	
Coastal Rivers/Streams and Marine Catch Area Totals		S	Marked	27	550	677	700	310	329							2,593
			Unmarked			3	8									11
			<b>Total</b>	<b>27</b>	<b>550</b>	<b>680</b>	<b>708</b>	<b>310</b>	<b>329</b>							<b>2,604</b>
		W	Marked	152							633	1,086	1,806	1,651	1,064	6,392
			Unmarked	125								33	61	259	398	876
			<b>Total</b>	<b>277</b>							<b>633</b>	<b>1,119</b>	<b>1,867</b>	<b>1,910</b>	<b>1,462</b>	<b>7,268</b>

Table 34. 2007-2008 Steelhead Sport Catch, by Area and Month (continued)

COLUMBIA RIVER AND TRIBUTARIES																	
System	Water	Race	Mark	2007									2008			Total	
				Apr	May	Jun	Jul	Aug	Sep	Oct	Nov	Dec	Jan	Feb	Mar		
Abernathy Cr. System	Abernathy Creek	S	Marked				3	3								6	
		W	Marked									4				4	
Coal Cr. System	Coal Creek (Cowlitz Co.)	S	Marked					3								3	
Columbia R. Mainstem	Columbia R 01: Buoy 10 to Megler-Astoria Br.	S	Marked		8	13	11	27	11	3						73	
		W	Marked								11	8			3	22	
	Columbia R 02: Megler-Astoria Br. to Longview Br.	S	Marked		757	2,035	2,045	1,110	40	5						5,992	
		W	Marked	94								11	16	11	16	86	234
	Columbia R 03: Longview Br. to I-5 Br.	S	Marked		53	99	567	1,173	176	19						2,087	
			Unmarked				3									3	
			Total		53	99	567	1,176	176	19						2,090	
		W	Marked	67								5	11	5	5	19	112
	Columbia R 04: I-5 Br. to Bonneville Dam	S	Marked			37	342	540	80	3						1,002	
		W	Marked	3								5	5		5	38	56
	Columbia R 05: Bonneville to The Dalles Dam	S	Marked	3		13	80	428	72	43	19			16		3	677
	Columbia R 06: The Dalles to John Day Dam	S	Marked	3			29	219	142	61	32	78		91	168	53	876
Columbia R 07: John Day to McNary Dam	S	Marked	3	3	3	5	11	64	444	331	315		112	43	110	1,444	

**Table 34. 2007-2008 Steelhead Sport Catch, by Area and Month (continued)**

COLUMBIA RIVER AND TRIBUTARIES																
System	Water	Race	Mark	2007									2008			Total
				Apr	May	Jun	Jul	Aug	Sep	Oct	Nov	Dec	Jan	Feb	Mar	
Columbia R. Mainstem (cont.)	Columbia R 08: McNary Dam - Hwy 395 Bridge @ Pasco	S	Marked			3		150	1,280	2,627	1,163	321	150	75	45	5,814
			Unmarked						3							3
			Total			3		150	1,280	2,630	1,163	321	150	75	45	5,817
	Columbia R 09: Hwy 395 Bridge to Priest Rapids Dam	S	Marked	78					3	434	471	182	115	80	391	1,754
	Columbia R 12: Rock Island to Rocky Reach Dam	S	Marked					3		32	35	37	19			126
	Columbia R 13: Rocky Reach to Wells Dam	S	Marked							53	195	155	123	48	3	577
	Columbia R 14: Wells to Chief Joseph Dam	S	Marked							478	353	262	86	53	21	1,253
Columbia R. Mainstem Totals	S	Marked	87	821	2,203	3,079	3,661	1,868	4,202	2,599	1,350	712	467	626	21,675	
		Unmarked					3		3					6		
		Total	87	821	2,203	3,079	3,664	1,868	4,205	2,599	1,350	712	467	626	21,681	
	W	Marked	164								32	40	16	26	146	424

Table 34. 2007-2008 Steelhead Sport Catch, by Area and Month (continued)

COLUMBIA RIVER AND TRIBUTARIES																			
System	Water	Race	Mark	2007									2008			Total			
				Apr	May	Jun	Jul	Aug	Sep	Oct	Nov	Dec	Jan	Feb	Mar				
Cowlitz R. System	Blue Creek (Lewis Co.)	W	Marked											15	34		49		
	Cispus River	S	Marked							3							3		
	Coweeman River	W	Marked											9	7	4	2	22	
	Cowlitz R. below Mayfield Dam	S	Marked		261	1,109	2,284	1,954	639	266								6,513	
		W	Marked	791								638	2,265			890	384	809	5,777
	Cowlitz R. between Mayfield & Cowlitz Falls Dams	S	Marked		8	3	5											16	
		W	Marked	7								2						4	13
	Cowlitz R. above Cowlitz Falls Dam	S	Marked				3					5							8
		W	Marked										13	7				2	22
	Green River (Cowlitz Co.)	S	Marked			128	13	26	31	18								216	
		W	Marked									7							7
	Lacamas Creek (Lewis Co.)	W	Marked												2			2	
	Olequa Creek (Cowlitz Co.)	S	Marked									3							3
		W	Marked													2	4	6	
	Tilton River	S	Marked				5					3							8
	Toutle River	S	Marked			10	3	13	5									31	
	Toutle River, No. Fork	S	Marked			10	5		13									28	
Toutle River, So. Fork	S	Marked			174	79	66	10	38								367		
	W	Marked									18					2	2	22	
Cowlitz R. System Totals	S	Marked		269	1,434	2,397	2,059	698	336								7,193		
	W	Marked	798								678	2,283			899	394	819	5,871	
Deep R. System (Wahkiakum)	Deep River (Wahkiakum Co.)	W	Marked												1		1		



**Table 34. 2007-2008 Steelhead Sport Catch, by Area and Month (continued)**

COLUMBIA RIVER AND TRIBUTARIES																
System	Water	Race	Mark	2007									2008			Total
				Apr	May	Jun	Jul	Aug	Sep	Oct	Nov	Dec	Jan	Feb	Mar	
Elochoman R. System	Elochoman River	S	Marked				13			56						69
		W	Marked							196 204			118	63	31	612
Germany Cr. System	Germany Creek	W	Marked										1 5 1			7
Grande Ronde R. System	Grande Ronde River	S	Marked	47		3	6	6	41	548	454	451	218	763	1,528	4,065
Grays R. System	Grays River	W	Marked							13 31			10	8	4	66
	Grays River, West Fork	W	Marked										116 57 6			179
	Grays R. System Totals	W	Marked							13 147			67	14	4	245
Hamilton Cr. System	Hamilton Creek	S	Marked							7						7
Kalama R. System	Kalama River above Kalama Falls Hatchery	W	Marked										3 3			6
		S	Marked	109 227 222 294 196 37												1,085
	Kalama River below Kalama Falls Hatchery	W	Marked	57						34 97			74	86	126	474
		S	Marked	109 227 222 294 196 37												1,085
Kalama R. System Totals	Kalama R. System Totals	W	Marked	57						34 97			77	86	129	480
		S	Marked	39 223 178 520 323 139												1,422
Klickitat R. System	Klickitat River	W	Marked	14									55			69

Table 34. 2007-2008 Steelhead Sport Catch, by Area and Month (continued)

COLUMBIA RIVER AND TRIBUTARIES																	
System	Water	Race	Mark	2007									2008			Total	
				Apr	May	Jun	Jul	Aug	Sep	Oct	Nov	Dec	Jan	Feb	Mar		
Lewis R. System	Cedar Creek (Clark Co.)	S	Marked							2	2					4	
	Lewis River (below E. Fork)	S	Marked		25	39	126	67	20							277	
		W	Marked	19								33	69	8	3	8	140
	Lewis River, East Fork	S	Marked		30	84	35	7	2	22						180	
		W	Marked	3								49	140	41	22	14	269
	Lewis River, North Fork	S	Marked		188	486	1,064	923	289	89						3,039	
		W	Marked	63								184	381	104	27	16	775
Lewis R. System Totals	S	Marked		243	609	1,225	997	313	113						3,500		
	W	Marked	85								266	590	153	52	38	1,184	
Little White Salmon R. Sys.	Little White Salmon River & Drano Lake	S	Marked	3	15	23	540	4,124	2,387	79	3	6	9			7,189	
Methow R. System	Methow River	S	Marked								552	229	45	8	49	4	887
Mill Cr. (Lewis Co.)	Mill Cr. (Lewis Co.)	S	Marked				7	10								17	
Mill Cr. System (Cowlitz)	Mill Creek (Cowlitz Co.)	S	Marked					3								3	
		W	Marked									3	3	1			7
Okanogan R. System	Okanogan River	S	Marked								130	84	15		22	220	471
	Similkameen River	S	Marked									22		6	34	285	347
	Okanogan R. System Totals	S	Marked								130	106	15	6	56	505	818
Rock Cr. System (Skamania)	Rock Creek (Skamania Co.)	S	Marked					3	3								6
Salmon Cr. System (Clark)	Salmon Creek (Clark Co.)	S	Marked			14					3						17
		W	Marked										4	22	5		31

Table 34. 2007-2008 Steelhead Sport Catch, by Area and Month (continued)

COLUMBIA RIVER AND TRIBUTARIES																	
System	Water	Race	Mark	2007									2008			Total	
				Apr	May	Jun	Jul	Aug	Sep	Oct	Nov	Dec	Jan	Feb	Mar		
Snake R. Mainstem	Snake R 1: below Ice Harbor Dam	S	Marked							23	33	46	77	26	8	213	
	Snake R 2: Ice Harbor to Lwr Monumental Dam	S	Marked							785	787	602	520	157	175	370	3,396
	Snake R 3: Lower Monumental to Little Goose Dam	S	Marked		8					1,093	1,346	487	678	180	147	173	4,112
	Snake R 4: Little Goose to Lower Granite Dam	S	Marked							214	214	204	206	106	106	178	1,228
	Snake R 5: Lower Granite Dam to Interstate Bridge, Clarkston	S	Marked						5	952	1,250	885	288	162	77	46	3,665
	Snake R 6: upstream of the Interstate Bridge, Clarkston	S	Marked							428	1,993	956	338	314	88		4,117
	Snake R. Mainstem Totals	S	Marked		8				5	3,495	5,623	3,180	2,107	945	601	767	16,731
	Tucannon R. System	Tucannon River	S	Marked			2	10	131	175	111	139	93	30	32	18	741
Walla Walla R. System	Touchet River	S	Marked	2							2	5	2	2	12	40	65
	Walla Walla River	S	Marked	2					67	145	70	62	35	12	12	405	
	Walla Walla R. System Totals	S	Marked	4					67	147	75	64	37	24	52	470	

Table 34. 2007-2008 Steelhead Sport Catch, by Area and Month (continued)

COLUMBIA RIVER AND TRIBUTARIES																	
System	Water	Race	Mark	2007									2008			Total	
				Apr	May	Jun	Jul	Aug	Sep	Oct	Nov	Dec	Jan	Feb	Mar		
Washougal R. System	Washougal R, West Fork	S	Marked			2	2			2	10					16	
		W	Marked									2	2	2		6	
	Washougal River	S	Marked		128	254	42	69	27	5							525
		W	Marked		9							14	90	47	31	9	200
	Washougal R. System Totals	S	Marked		128	256	44	69	29	15							541
		W	Marked		9							16	92	49	31	9	206
Wenatchee R. System	Icicle Creek	S	Marked							4						4	
	Wenatchee River	S	Marked							175	166	70	4	16		431	
	Wenatchee R. System Totals	S	Marked							179	166	70	4	16		435	
White Salmon R. System	Big White Salmon River	S	Marked		25	61	659	3,677	874	6						5,302	
		W	Marked		4						25	74	4	8		115	
Wind R. System	Wind River below Shipherd Falls	S	Marked	3	7		24	1,149	235	3	3		3	3	3	1,433	
<b>Columbia River and Tributary System Totals (All non-Boldt)</b>		S	Marked	144	1,664	5,055	8,407	16,714	10,704	12,286	6,954	4,201	1,972	2,011	3,503	73,615	
			Unmarked						3		3						6
			Total	144	1,664	5,055	8,407	16,717	10,704	12,289	6,954	4,201	1,972	2,011	3,503	73,621	
		W	Marked	1,131								1,322	3,572	1,429	675	1,176	9,305

**Table 34. 2007-2008 Steelhead Sport Catch, by Area and Month (continued)**

PUGET SOUND AND STRAIT OF JUAN DE FUCA RIVER SYSTEMS AND MARINE CATCH AREAS																	
System	Water	Race	Mark	2007									2008			Total	
				Apr	May	Jun	Jul	Aug	Sep	Oct	Nov	Dec	Jan	Feb	Mar		
Marine Water *	Area 5: W Juan de Fuca	S	Marked				6			12						18	
		W	Marked	7									3			23	
	Area 6: E Juan de Fuca	W	Marked							7						7	
	Area 7: San Juan Islands	W	Marked							3			3			6	
	Area 8-1: Skagit Bay-Saratoga Psg.	W	Marked	3												3	
	Area 8-2: Port Susan-Port Gardner	S	Marked				6									6	
		W	Marked	3									3			9	
	Area 9: Admiralty Inlet	S	Marked				6			12						18	
		W	Marked	10									14 24			17 10	75
	Area 11: Mid-Puget Sound	W	Marked										3			3 3	9
	Area 13: S Puget Sound	S	Marked				6									6	
Marine Water Totals	S	Marked	6			12			18			12			48		
	W	Marked	23									17 40			24 16 12	132	
Chambers Cr. System *	Chambers Creek	S	Marked				3									3	
		W	Marked							2						2	
Clallam R. System *	Clallam River	W	Marked										5			5	10
Deep Cr. System (Clallam) *	Deep Creek (Clallam Co.)	W	Marked										2 2			4	
Dungeness R. System *	Dungeness River	S	Marked				3									3	
		W	Marked							5			9 7			21	
Elwha R. System *	Elwha River	S	Marked							5						5	
		W	Marked										33 9			7	49

Table 34. 2007-2008 Steelhead Sport Catch, by Area and Month (continued)

PUGET SOUND AND STRAIT OF JUAN DE FUCA RIVER SYSTEMS AND MARINE CATCH AREAS																		
System	Water	Race	Mark	2007									2008			Total		
				Apr	May	Jun	Jul	Aug	Sep	Oct	Nov	Dec	Jan	Feb	Mar			
Green-Duwamish R. System *	Green (Duwamish River) (King Co.)	S	Marked			71	40	42	63	16							232	
			Unmarked			5												5
			Total			76	40	42	63	16								237
		W	Marked									52	148	117	113			430
			Unmarked									4		2	6			12
			Total									56	148	119	119			442
Hoko R. System *	Hoko River	S	Unmarked								3						3	
			W	Marked							5	38	17	7	5		72	
		W	Unmarked									2	2	2			6	
			Total									5	40	19	9	5		78
Lyre R. System *	Lyre River	S	Marked			1	1	12	4	5							23	
		W	Marked								50	81	7				138	
Morse Cr. System *	Morse Creek (Clallam Co.)	W	Marked									5	5				10	
Nisqually R. System *	Nisqually River	S	Marked				3	8	8	5							24	
Nooksack R. System *	Nooksack River, North Fork	W	Marked									24	31	14			69	
	Nooksack River, South Fork	W	Marked								5		7				12	
	Nooksack River, below North Fork	W	Marked								2	24	28	12			66	
	Nooksack R. System Totals	W	Marked								7	48	66	26			147	
Puyallup R. System *	Carbon River	S	Marked								3						3	
		W	Marked								2	24	14	9			49	
	Puyallup River	W	Marked								2	26	21	9	2		60	
	Puyallup R. System Totals	S	Marked								3							3
		W	Marked									4	50	35	18	2		109
Pysht R. System *	Pysht River	W	Marked									2	7	9	7		25	
			Unmarked										2		7		9	
			Total									2	9	9	14			34

**Table 34. 2007-2008 Steelhead Sport Catch, by Area and Month (continued)**

PUGET SOUND AND STRAIT OF JUAN DE FUCA RIVER SYSTEMS AND MARINE CATCH AREAS																					
System	Water	Race	Mark	2007										2008			Total				
				Apr	May	Jun	Jul	Aug	Sep	Oct	Nov	Dec	Jan	Feb	Mar						
Salt Cr. System *	Salt Creek (Clallam Co.)	W	Marked											2				2			
Samish R. System *	Samish River	W	Marked											2	7	5		14			
Skagit R. System *	Cascade River	S	Marked				3					9							12		
		W	Marked										57	391	124	46		618			
	Sauk River	S	Marked				6													6	
		W	Marked											5	16	11	3		35		
	Skagit River	S	Marked				3	3	21	9	12									48	
		W	Marked					3						62	380	189	62	27		723	
	Suiattle River	S	Marked				3												3		
	Skagit R. System Totals	S	Marked				3	15	21	9	21									69	
W		Marked					3						119	776	329	119	30		1,376		
Skokomish R. System *	Skokomish River (Mason Co.)	W	Marked											2				2			
Snohomish R. System *	Pilchuck River (Snohomish System)	W	Marked											53	32	21			106		
	Raging River	S	Marked						3			3									6
		W	Marked											3	26	8				37	
	Skykomish River	S	Marked				258	218	204	91	125									896	
		W	Marked											242	1,058	387	216			1,903	
	Skykomish River, No. Fork	S	Marked				9	28	17	17	9									80	
		W	Marked											5	29	3	5			42	
	Skykomish River, So. Fork	S	Marked				9		20	3										32	
		W	Marked											5		5				10	
	Snohomish River	S	Marked				74	31	31	28	9									173	
		W	Marked											34	95	34	16			179	
Snoqualmie River	S	Marked				51	57	45	51	17									221		
	W	Marked											103	647	182	34			966		
Sultan River	S	Marked				6	11	9	9										35		
	W	Marked											3		5				8		

Table 34. 2007-2008 Steelhead Sport Catch, by Area and Month (continued)

COASTAL RIVERS AND MARINE CATCH AREAS																		
System	Water	Race	Mark	2007									2008			Total		
				Apr	May	Jun	Jul	Aug	Sep	Oct	Nov	Dec	Jan	Feb	Mar			
	Tokul Creek	W	Marked											16	100	63	179	
	Tolt River	W	Marked											18	3	3	24	
	Wallace River	S	Marked			6	6	3	40	26							81	
		W	Marked											61	324	87	18	490
	Snohomish R. System Totals	S	Marked			413	351	332	239	189							1,524	
W		Marked											448	2,274	846	376	3,944	
Stillaguamish R. System *	Pilchuck Creek (Stillaguamish System)	W	Marked												3		3	
	Stillaguamish R, No. Fork	S	Marked			7	7	4	15	26							59	
		W	Marked											12	279	125	36	452
	Stillaguamish R, So. Fork	S	Marked					4									4	
		W	Marked											6	3	3	6	18
	Stillaguamish River	S	Marked							18	4							22
		W	Marked											21		15	12	48
Stillaguamish R. System Totals	S	Marked			7	7	8	33	30								85	
	W	Marked											18	303	146	54	521	
Whatcom Cr. System *	Whatcom Creek	W	Marked											2		2	4	
<b>Puget Sound, Strait of Juan de Fuca River Systems and Marine Catch Area Totals (All are Boldt Case Areas)</b>	S	Marked			501	432	426	374	286								2,019	
		Unmarked			5					3							8	
		<b>Total</b>			<b>506</b>	<b>432</b>	<b>426</b>	<b>374</b>	<b>289</b>								<b>2,027</b>	
	W	Marked	26									755	3,799	1,631	752	49	7,012	
		Unmarked										4	4	4	15		27	
		<b>Total</b>	<b>26</b>									<b>759</b>	<b>3,803</b>	<b>1,635</b>	<b>767</b>	<b>49</b>	<b>7,039</b>	



**Table 34. 2007-2008 Steelhead Sport Catch, by Area and Month (continued)**

UNKNOWN AREA																
System	Water	Race	Mark	2007									2008			Total
				Apr	May	Jun	Jul	Aug	Sep	Oct	Nov	Dec	Jan	Feb	Mar	
Total Unknown		S	Marked	23	8	55	55	39	109							289
			Unmarked						8							8
			<b>Total</b>	<b>23</b>	<b>8</b>	<b>55</b>	<b>55</b>	<b>39</b>	<b>117</b>							<b>297</b>
		W	Marked	8							78	149	24	47	16	322
			Unmarked								8					8
			<b>Total</b>	<b>8</b>							<b>86</b>	<b>149</b>	<b>24</b>	<b>47</b>	<b>16</b>	<b>330</b>

**Table 35. 2007-2008 Washington Sport Steelhead Fishing, by Residence**

County of Residence	Number Catch Record Cards	Population by County	% Catch Record Card Holders	Total Steelhead	Average Catch per Card
Adams	1,732	16,943	10.2	747	0.43
Asotin	3,044	21,167	14.4	1,706	0.56
Benton	20,902	159,444	13.1	9,050	0.43
Chelan	7,665	70,677	10.8	1,851	0.24
Clallam	11,028	70,272	15.7	1,882	0.17
Clark	44,749	416,662	10.7	7,382	0.16
Columbia	763	3,954	19.3	374	0.49
Cowlitz	20,847	100,557	20.7	6,673	0.32
Douglas	3,816	36,322	10.5	525	0.14
Ferry	382	7,362	5.2	175	0.46
Franklin	7,658	69,518	11.0	3,275	0.43
Garfield	440	2,091	21.0	320	0.73
Grant	5,618	83,111	6.8	442	0.08
Grays Harbor	11,970	71,343	16.8	1,867	0.16
Island	13,400	80,860	16.6	182	0.01
Jefferson	4,581	29,273	15.6	107	0.02
King	103,940	1,860,000	5.6	7,451	0.07
Kitsap	24,752	238,087	10.4	709	0.03
Kittitas	3,361	38,384	8.8	404	0.12
Klickitat	3,456	20,109	17.2	1,828	0.53
Lewis	12,519	73,699	17.0	2,963	0.24
Lincoln	855	10,266	8.3	221	0.26
Mason	8,025	56,823	14.1	427	0.05
Okanogan	4,558	39,589	11.5	1,052	0.23
Pacific	4,506	21,458	21.0	845	0.19
Pend Oreille	578	12,792	4.5	31	0.05
Pierce	70,022	774,049	9.0	5,020	0.07
San Juan	2,304	15,280	15.1	8	0.00
Skagit	16,603	116,261	14.3	945	0.06
Skamania	1,564	10,749	14.6	739	0.47
Snohomish	69,664	675,805	10.3	5,546	0.08
Spokane	19,519	456,187	4.3	6,186	0.32
Stevens	2,003	41,953	4.8	274	0.14
Thurston	25,284	238,717	10.6	4,632	0.18
Wahkiakum	1,307	3,985	32.8	1,341	1.03
Walla Walla	5,788	57,509	10.1	3,040	0.53
Whatcom	17,800	192,843	9.2	1,127	0.06
Whitman	2,479	41,084	6.0	1,044	0.42
Yakima	20,836	232,288	9.0	9,979	0.48
Unknown WA	1,832			427	0.23
<b>Washington Total</b>	<b>582,150</b>	<b>6,460,000</b>	<b>9.0</b>	<b>92,797</b>	<b>0.16</b>
Other State Total	56,584			9,682	0.17
Canada	1,670			15	0.01
Other	490				
<b>Grand Total</b>	<b>640,894</b>			<b>102,494</b>	<b>0.16</b>

Note: The figures do not accurately multiply across because of bias adjustment factor and rounding of numbers.

Source: Table 1: Annual Estimates of the Resident Population for Counties of Washington: April 1, 2000 to July 1, 2009 (CO-EST2009-01-53). Source: Population Division, U.S. Census Bureau. Release Date: March, 2010.

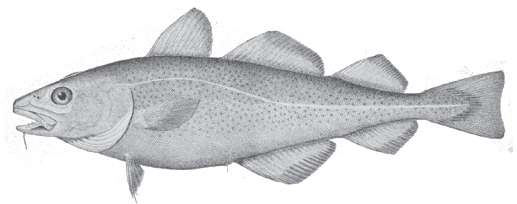
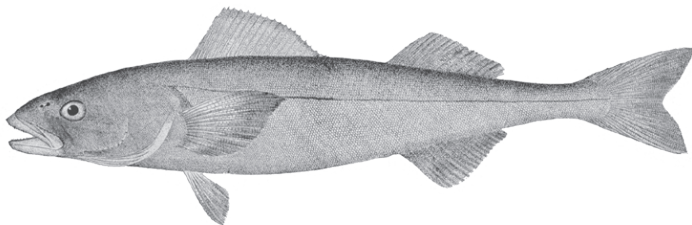
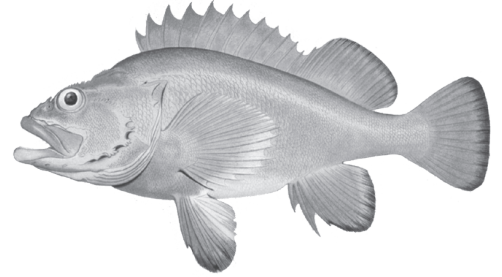
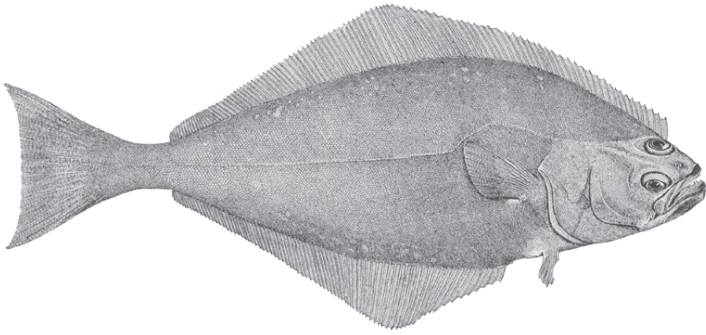
Table 36. 2007-2008 Frequency Distribution of Estimated Steelhead Catch Record Cards and Catch

#Steelhead per Catch Record Card	Number of Cards	Cumulative Number of Cards	Percent Cards	Cumulative Percent Cards	Total Catch	Cumulative Total Catch	Percent Catch	Cumulative Percent Catch
0	608,982	608,982	95.01%	95.01%	0	0	0.00%	0.00%
1	14,144	623,126	2.16%	97.17%	14,144	14,144	13.80%	13.80%
2	6,487	629,613	0.99%	98.17%	12,974	27,118	12.66%	26.46%
3	3,365	632,978	0.51%	98.68%	10,095	37,213	9.85%	36.31%
4	1,983	634,961	0.30%	98.99%	7,932	45,145	7.74%	44.05%
5	1,246	636,207	0.19%	99.18%	6,230	51,375	6.08%	50.13%
6	1,041	637,248	0.16%	99.34%	6,246	57,621	6.09%	56.22%
7	600	637,848	0.09%	99.43%	4,200	61,821	4.10%	60.32%
8	509	638,357	0.08%	99.50%	4,072	65,893	3.97%	64.29%
9	395	638,752	0.06%	99.57%	3,555	69,448	3.47%	67.76%
10	395	639,147	0.06%	99.63%	3,950	73,398	3.85%	71.61%
11	349	639,496	0.05%	99.68%	3,839	77,237	3.75%	75.36%
12	190	639,686	0.03%	99.71%	2,280	79,517	2.22%	77.58%
13	137	639,823	0.02%	99.73%	1,781	81,298	1.74%	79.32%
14	144	639,967	0.02%	99.75%	2,016	83,314	1.97%	81.29%
15	99	640,066	0.02%	99.77%	1,485	84,799	1.45%	82.74%
16	76	640,142	0.01%	99.78%	1,216	86,015	1.19%	83.93%
17	122	640,264	0.02%	99.80%	2,074	88,089	2.02%	85.95%
18	99	640,363	0.02%	99.81%	1,782	89,871	1.74%	87.69%
19	68	640,431	0.01%	99.82%	1,292	91,163	1.26%	88.95%
20	76	640,507	0.01%	99.83%	1,520	92,683	1.48%	90.43%
21	38	640,545	0.01%	99.84%	798	93,481	0.78%	91.21%
22	30	640,575	0.00%	99.84%	660	94,141	0.64%	91.85%
23	53	640,628	0.01%	99.85%	1,219	95,360	1.19%	93.04%
24	61	640,689	0.01%	99.86%	1,464	96,824	1.43%	94.47%
25	38	640,727	0.01%	99.87%	950	97,774	0.93%	95.40%
26	30	640,757	0.00%	99.87%	780	98,554	0.76%	96.16%
27	30	640,787	0.00%	99.88%	810	99,364	0.79%	96.95%
28	15	640,802	0.00%	99.88%	420	99,784	0.41%	97.36%
29	23	640,825	0.00%	99.88%	667	100,451	0.65%	98.01%
30	68	640,893	0.01%	99.89%	2,040	102,491	1.99%	100.00%
<b>Total</b>	<b>640,893</b>		<b>99.89%</b>		<b>102,491</b>		<b>100.00%</b>	

Table 37. 2007-2008 Sport Steelhead Inventory of Catch Record Cards Received

Response Type	With Catch		No catch		Total Cards & Letters	Number of Steelhead			Catch per Card		
	Catch Records	Reminder Letters	Catch Records	Reminder Letters		Catch Records	Reminder Letters	Total	Catch Records	Reminder Letters	Total
Prior to reminder	195		4,820		5,015	561		561	0.11		0.11
After reminder postcard	2,740		37,961		40,701	8,843		8,843	0.22		0.22
After 1st reminder letter	619	344	9,492	27,091	37,546	2,028	1,006	3,034	0.20	0.04	0.08
From license dealer	233		1,720	105	2,058	854		854	0.44		0.41
<b>Total</b>	<b>3,787</b>	<b>344</b>	<b>53,993</b>	<b>27,196</b>	<b>85,320</b>	<b>12,286</b>	<b>1,006</b>	<b>13,292</b>	<b>0.23</b>	<b>0.04</b>	<b>0.16</b>

# Marine Fish



**Table 38. 2007-2008 Coastal Bottomfish Catch**

Species	Catch Area					Total
	Area 1 Ilwaco	Area 2 Westport	Area 3 La Push	Area 4 Neah Bay (Ocean)	Area 4B Neah Bay (Strait)	
Black Rockfish	6,644	152,308	12,449	25,216	25,687	222,303
Blue Rockfish	2	276	272	1,188	442	2,178
Yellowtail Rockfish	530	11,524	253	821	549	13,677
China Rockfish	7	64	205	1,667	843	2,786
Quillback Rockfish	14	844	184	933	587	2,562
Copper Rockfish	11	62	19	674	731	1,497
Canary Rockfish		0	7	60	67	135
Yelloweye Rockfish		1	13	32	30	76
Tiger Rockfish		10	14	55	11	91
Vermillion Rockfish		0	6	373	118	497
Boccaccio		8	23	104	5	140
Other Rockfish	4	78		41	15	138
Lingcod	406	7,864	2,529	5,110	2,389	18,299
Kelp Greenling	218	212	226	1,165	1,737	3,557
Pacific Cod		18	2	49	33	102
Cod (general)	6	37	19	14	11	87
Cabezon	199	247	157	1,227	604	2,434
Flatfish	29	247	9	75	95	455
Surf Perch	2	40		6	14	62
Sharks and Skates	23	62	3	47	11	147
Miscellaneous	1,080	990	129	154	391	2,744

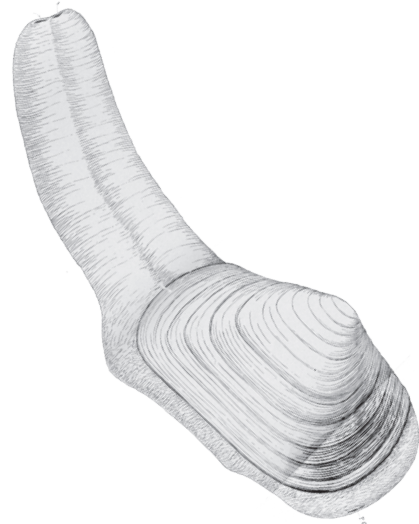
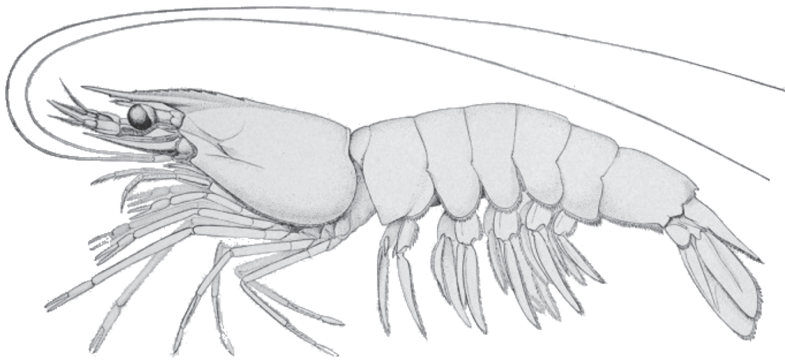
**Table 39. Coastal Washington Recreational Pacific Halibut Catch - 1990-2007**

<b>Year</b>	<b>South Coast Catch Areas 1-2</b>	<b>North Coast Catch Areas 3-4</b>
1990	392	4,958
1991	433	4,823
1992	1,740	6,870
1993	539	5,009
1994	651	2,876
1995	884	4,224
1996	877	4,431
1997	1,455	5,996
1998	2,940	6,127
1999	2,126	4,773
2000	2,341	4,286
2001	2,365	5,752
2002	2,129	5,219
2003	2,809	5,576
2004	3,901	5,627
2005	3,049	5,575
2006	3,069	4,600
2007	2,551	5,504

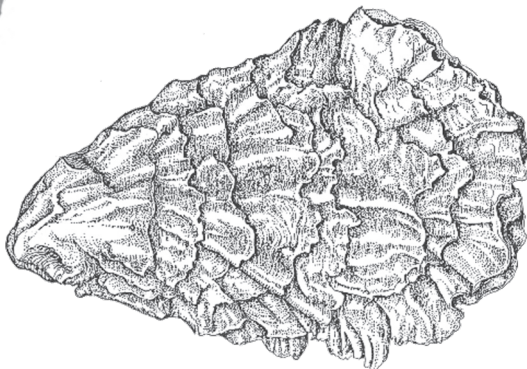
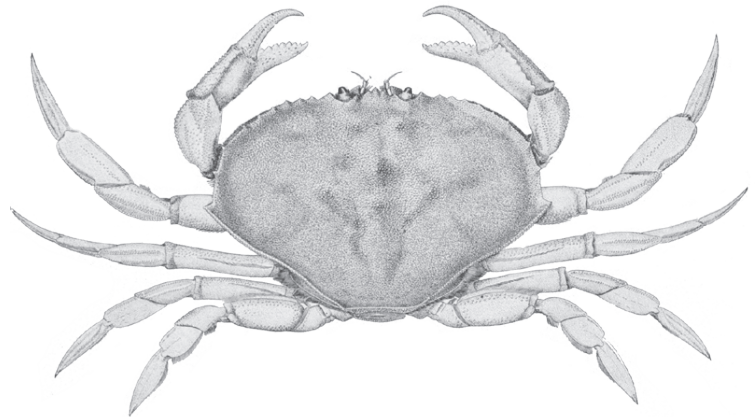
Table 40. 2007 Sport Bottomfish Catch by Boat-Based Anglers in Puget Sound

Species	Catch Record Area										Puget Sound Total	
	5	6	7	8-1	8-2	9	10	11	12	13		
Pacific Halibut	783	1,045	123			48						1,999
Starry Flounder		298	391	4	5	63	7				18	786
Soles	37	27	1,967	640	4,900	10,369	785	5,291			1,076	25,092
Sanddabs			179	366	7,744	5,398	2,513	21,179			1,421	38,800
Sablefish												0
Lingcod	99	80	1,887	354	41	851	38	231			43	3,624
Greenlings	163	764	3,156	767	69	520	2	138			542	6,121
Copper Rockfish	224	132	3,229	74	1,165	798	494	366	40		72	6,594
Quillback Rockfish	115	15	1,191	36	229	344	150	4				2,084
Brown Rockfish					22	101	25	2,838			18	3,004
Black Rockfish	1,239	35	41	33	20	91	9					1,468
Other Rockfishes	7	22	1,817	53	82	232	342	1,019			44	3,618
Pacific Cod	29											29
Walleye Pollock								983				983
Surfperches				793	302	413	37	1,212				2,757
Cabezon	46	174	489	4		189	3					905
Other Sculpins	13		198	36	146	17	20	2,251			32	2,713
Spiny Dogfish	25	3	697	4	157	294	40	594	241		272	2,327
Misc. Bottomfish	27	2	113					227				369
<b>Total</b>	<b>2,807</b>	<b>2,597</b>	<b>15,478</b>	<b>3,164</b>	<b>14,882</b>	<b>19,728</b>	<b>4,465</b>	<b>36,333</b>	<b>281</b>	<b>3,538</b>	<b>103,273</b>	





# Shellfish



**Table 41. 2007-2008 Summary of Sport Razor Clam Digging on Ocean Beaches**

<b>Location</b>	<b>Digger Trips</b>	<b>Clams Per Trip</b>	<b>Number of Clams</b>
Long Beach	112,441	10.9	1,227,519
Twin Harbors	65,252	12.7	825,539
Copalis	42,376	15.0	636,376
Mocrocks	22,248	15.3	341,406
Kalaloch	0	0.0	0
<b>Total</b>	<b>242,317</b>	<b>12.5</b>	<b>3,030,840</b>

Table 42. 2007 Clam and Oyster Recreational Use and Harvest Estimates from Intertidal Areas East Of Dungeness Spit

Marine Areas	Beach Name	User Trips	Pounds of Clams Harvested							Total	Number of Oysters
			Manila	Littleneck	Butter	Cockle	Softshell	Horse	Geoduck		
6	Sequim Bay SP	2,194	118	3,511	295	298	10	333		4,564	21,936
7	Spencer Spit SP	407		288	584	105		492		1,469	1,346
	N. English Camp	267	19	722	85	154	23	28		1,031	
	Birch Bay SP	9,788	743	18,529	20,278	1,143	61	3,816		44,570	
	Pt. Whitehorn	799	1	276	954	118		3,758		5,107	
	Samish Is Rec Area	712		883	1,121	72	7	1,035		3,118	
8-1	Madrona	219		39	87	530		17		673	21,211
	West Penn Cove	8,521	8	1,120	42,584	2,653		1,603		47,968	
	Long Pt	717		4	6,119	11		337		6,471	
	Ala Spit	465		4	3,575	297	7	421		4,304	
	Saratoga Passage	650		472	45	76	27	52		672	
	Freeland CP	2	3							3	
	Winas-Maylor Pt-East	1,095		1,368	4,087	539		404		6,398	
9	Double Bluffs SP	1,044		872	2,961	74		735	12	4,654	168
	Fort Flagler SP	2,855	25	6,531	6,779	580	50	1,221	250	15,436	
	Oak Bay CP	618	81	265	2,212	206	4	758		3,527	
	P. T. Ship Canal East	648	65	270	3,285	379	1	433	5	4,437	
	S Indian Island	4,946	6,323	3,504	4,611	1,229	127	708	518	17,019	
12	Shine Tidelands	3,302	2,500	1,842	6,041	1,463	12	1,056	478	13,393	1,377
	Wolfe Prop SP	3,205	5,312	735	1,036	60	58	1,779		8,980	18,938
	Coast Broad Spit	520	961	5		1	0	16	78	1,061	3,305
	Coast E Dabob	109	219	9	0	4			23	254	686
	Ouilcene Tidelands	3,233	5,407	0		2	5			5,414	17,396
	S. Zelached Point	193	11	43	207	35		227	3	525	2,534
	Toandos Pen SP	387	0	85	373	5	1	246	132	843	3,867
	Dosewallips SP App.	5,144	6,754	190	202	117	79	0	69	7,411	54,433
	Dosewallips SP Rest.	54	78	2	2	1	1	0	1	85	540
	Seal Rock FSC	1,144		12	30	28		0	142	212	18,767
	Kitsap Memorial	1,357	3	421	2,889	1,264	24	1,190	40	5,831	12,641
	Pt. Whitney	1,886	2,441	75	78	6	2			2,603	17,186
	Pt. Whitney Lagoon	742	1,226				0			1,226	1,436

Table 42. 2007 Clam and Oyster Recreational Use and Harvest Estimates from Intertidal Areas East Of Dungeness Spit (cont.)

Marine Areas	Beach Name	User Trips	Pounds of Clams Harvested								Number of Oysters	
			Manila	Littleneck	Butter	Cockle	Softshell	Horse	Geoduck	Total		
12 (cont.)	Eagle Creek										0	
	DNR-44A W Dewatto	560					1				1	9,809
	Scenic Beach SP	236	0	9	25	23	0	12	4	73	3,648	
	Potlatch West SP-DNR	9,699	2,430	5,033	11,122	11,851	705	179		31,320	99,763	
	Cushman Park	1,283	655	203	1,189	576	4	55		2,682	12,631	
	Belfair SP	1,436	1,918	1				101		2,020	9,127	
	Rendsland Creek	642	343	96	786	537	6	22		1,792	10,170	
	Duckabush	4,306	8,934	346	1,017	688	77	100	214	11,377	37,979	
	Triton Cove Tidelands	795	323	85	143	84	9	13		657	10,552	
	Lilliwaup SP	1,785	148	401	1,316	770	10	212	3	2,861	18,867	
Twanoh SP	512	1				0			1	8,565		
13	Penrose Point	1,556	1,468	515	420	27	82	649	18	3,178	17,363	
	North Bay	7,554	17,373	2,858	192	33	290		124	20,870	26,002	
	Frye Cove	485	215	543	11	29	12	121	99	1,029	4,124	
	DNR 24	660	228	160		2	11	32		433	7,916	
	McMicken Island SP	799	104	1,946	268		14	255		2,587		
	Hope Island SP	382	10	103	2,782	2	14	236	597	3,744	654	
	Oakland Bay Ch Flats	81	153	0	3					155	592	
	Oakland Bay Ogg	708	1,335	0	23					1,358	5,180	
<b>Total</b>		<b>90,703</b>	<b>67,934</b>	<b>54,376</b>	<b>129,819</b>	<b>26,072</b>	<b>1,834</b>	<b>22,552</b>	<b>2,811</b>	<b>305,397</b>	<b>483,816</b>	

**Table 43. 2007 Hood Canal Sport Shrimp Fishery**

Area	Date	Pots Fished	Pounds	CPUE (lbs. per pot)
12	May - June (7 days)	20,762	77,028	3.71
<b>Total</b>		<b>20,762</b>	<b>77,028</b>	<b>3.71</b>

**Table 44. 2007 Puget Sound Sport Spot Shrimp Fishery**

Area	Date	Pots Fished	Pounds	CPUE (lbs. per pot)
4, 5, & 6	May - Sept	n/a	1,600	
7	May - June	3,286	12,607	3.84
8-1 & 8-2	May	2,401	10,913	4.55
9	May	1,093	4,308	3.94
10	May	1,606	5,252	3.27
11	May	491	1,358	2.77
13	May - Sept	n/a	50	
<b>Total</b>		<b>8,877</b>	<b>36,088</b>	<b>3.67</b>

**Table 45. 2007-2008 Sport Dungeness Crab Catch (all gear types)**

Marine Area and location		Summer Season (lb. of crab)	Fall/Winter Season (lb. of crab)
<b>4</b>	Neah Bay		
<b>5</b>	Seki/Pillar Point		
	Total	20,368	2,482
<b>6</b>	Port Angeles Harbor, Dungeness & Sequim Bays, Discovery Bay		
	Total	39,222	22,907
<b>7</b>	Gulf of Georgia, North of San Juan Islands, Bellingham Bay, Samish Bay, San Juan Islands, Anacortes		
	Total	399,066	34,696
<b>8-1</b>	Skagit Bay, North Saratoga Passage, Holmes Harbor		
	Total	158,797	6,854
<b>8-2</b>	South Saratoga Passage		
	Port Susan		
	Port Gardner		
	Total	176,607	13,138
<b>9<sup>1</sup></b>	Admiralty Inlet, Port Townsend Bay, Useless Bay		
	Total	38,354	3,347
<b>10</b>	Seattle/Kingston, Port Orchard		
	Total	51,044	10,385
<b>11</b>	Colvos Pass, East Pass		
	Total	31,657	13,227
<b>13</b>	South Puget Sound		
	Total	11,698	5,124
<b>12, 9<sup>2</sup></b>	Port Ludlow/Port Gamble, Upper Hood Canal, Central Hood Canal, Lower Hood Canal		
	Total	88,411	14,593
<b>Total</b>		<b>1,015,224</b>	<b>126,753</b>

<sup>1</sup> Excluding all waters of Marine Area 9 south of a line from Foulweather Bluff to Olele Point.

<sup>2</sup> Including all waters of Marine Area 9 south of a line from Foulweather Bluff to Olele Point.



This program receives Federal financial assistance from the U.S. Fish and Wildlife Service Title VI of the Civil Rights Act of 1964, Section 504 of the Rehabilitation Act of 1973, Title II of the Americans with Disabilities Act of 1990, the Age Discrimination Act of 1975, and Title IX of the Education Amendments of 1972. The U.S. Department of the Interior and its bureaus prohibit discrimination on the bases of race, color, national origin, age, disability and sex (in educational programs). If you believe that you have been discriminated against in any program, activity or facility, please write to:

U.S. Fish and Wildlife Service  
Civil Rights Coordinator for Public Access  
4401 N. Fairfax Drive, Mail Stop: WSFR-4020  
Arlington, VA 22203