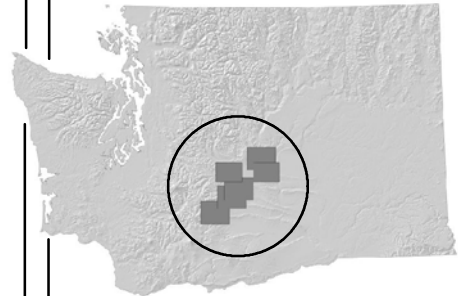


Cooperative Road Management Area Map

NANEUM COLOCKUM Green Dot Roads



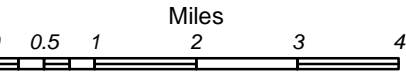
Maps in this series include: LT Murray, Wenas, Oak Creek, Ahtanum, Naneum/Colockum, Whiskey Dick/Quilomene

Green Dot Roads are open to motorized vehicles. Other roads and trails are closed to all motorized vehicles.
Green Dot Roads are posted with round green reflectors on white route markers.

- Green Dot Road
- Green Dot Road Remains Open During Winter
- Road Open to Public for Street-legal
- Primary Highway
- Secondary Highway
- Paved Road
- Unpaved Road
- Trail
- Railroad
- Gate
- Gate - Seasonal Closure
- Winter Elk Feeding
- Elk Fence
- Transmission Lines
- Pipeline
- County Boundary

- Dept of Natural Resources
- State Parks & Rec
- Dept of Fish & Wildlife
- Bureau of Land Mgmt
- US Forest Service
- Chelan County

- Road Management Area
- Arthur S. Coffin Game Reserve-No Hunting Year-Round. No Trespassing from March 1 to November 30. Open to Winter Recreation December 1 to February 28.
- Winter Closure - No Motorized Vehicles from February 1 to May 1



Map Issue Date: May 1, 2019
After May 1st each year, please use the websites listed below to see if there has been an updated map issued, or contact WDFW at 509-575-2740.

Due to the dynamic nature of data and the need to rely on outside sources of information the Washington Department of Natural Resources or the Washington Department of Fish and Wildlife cannot accept responsibility for errors or omissions in the data and information contained in this product. There are no warranties that accompany the maps and information contained in this product.

We do not guarantee that roads are maintained or passable for a standard vehicle.

Download Current Maps
https://wdfw.wa.gov/about/wdfw-lands/green_dot
<http://www.dnr.wa.gov/go>

