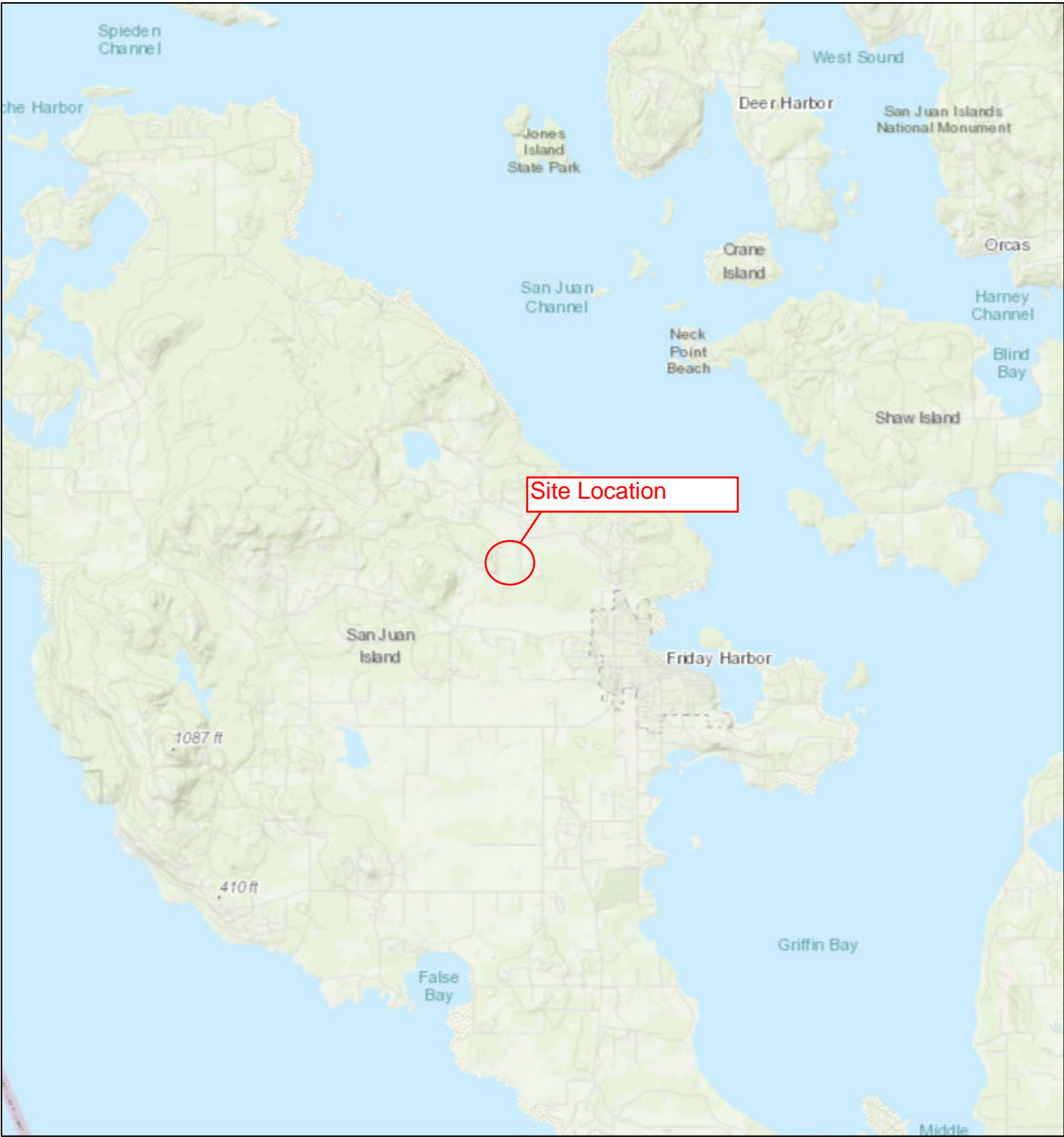
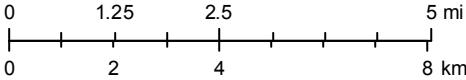


Harley - Pond Location



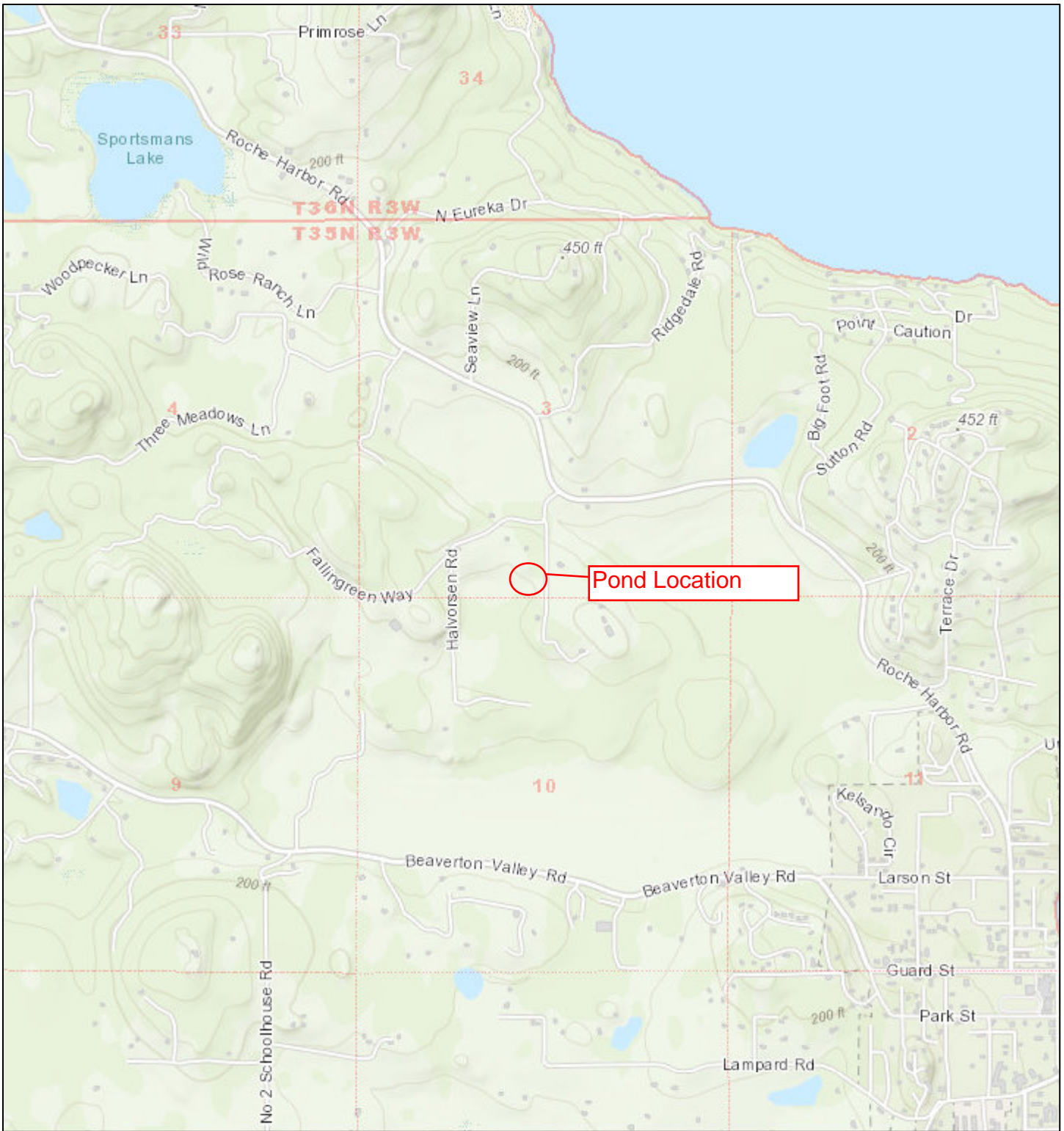
May 9, 2019

1:144,448





Sources: Esri, HERE, Garmin, Intermap, increment P Corp., GEBCO, USGS, FAO, NPS, NRCAN, GeoBase, IGN, Kadaster NL, Ordnance Survey, Esri Japan, METI, Esri China (Hong Kong), (c) OpenStreetMap contributors, and the GIS User Community

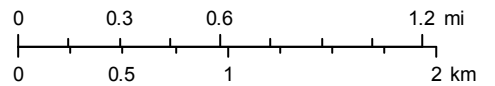
Harley - Pond Location



May 9, 2019

1:36,112

-  Township
-  Section



Sources: Esri, HERE, Garmin, Intermap, increment P Corp., GEBCO, USGS, FAO, NPS, NRCAN, GeoBase, IGN, Kadaster NL, Ordnance Survey, Esri Japan, METI, Esri China (Hong Kong), (c) OpenStreetMap contributors, and the GIS User Community

Help

Legend

Map Contents

Search

Measure


Draw


Print

Map title: My Map

Format: JPG

Layout: Letter_Landscape

1.  My Map

2.  My Map

Disclaimer on Use





Printed from Polaris Property Search - San Juan County WA

Date: 10/7/2018

Time: 12:17:37 PM

Harley's Pond

Application to stock Sterile Triploid Carp to control aquatic weeds, Duckweed, American Pond weed and Eurasian Millfoil.