



# Northwest Straits

## INITIATIVE

*partners in marine conservation*

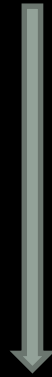


# Northwest Straits Commission History

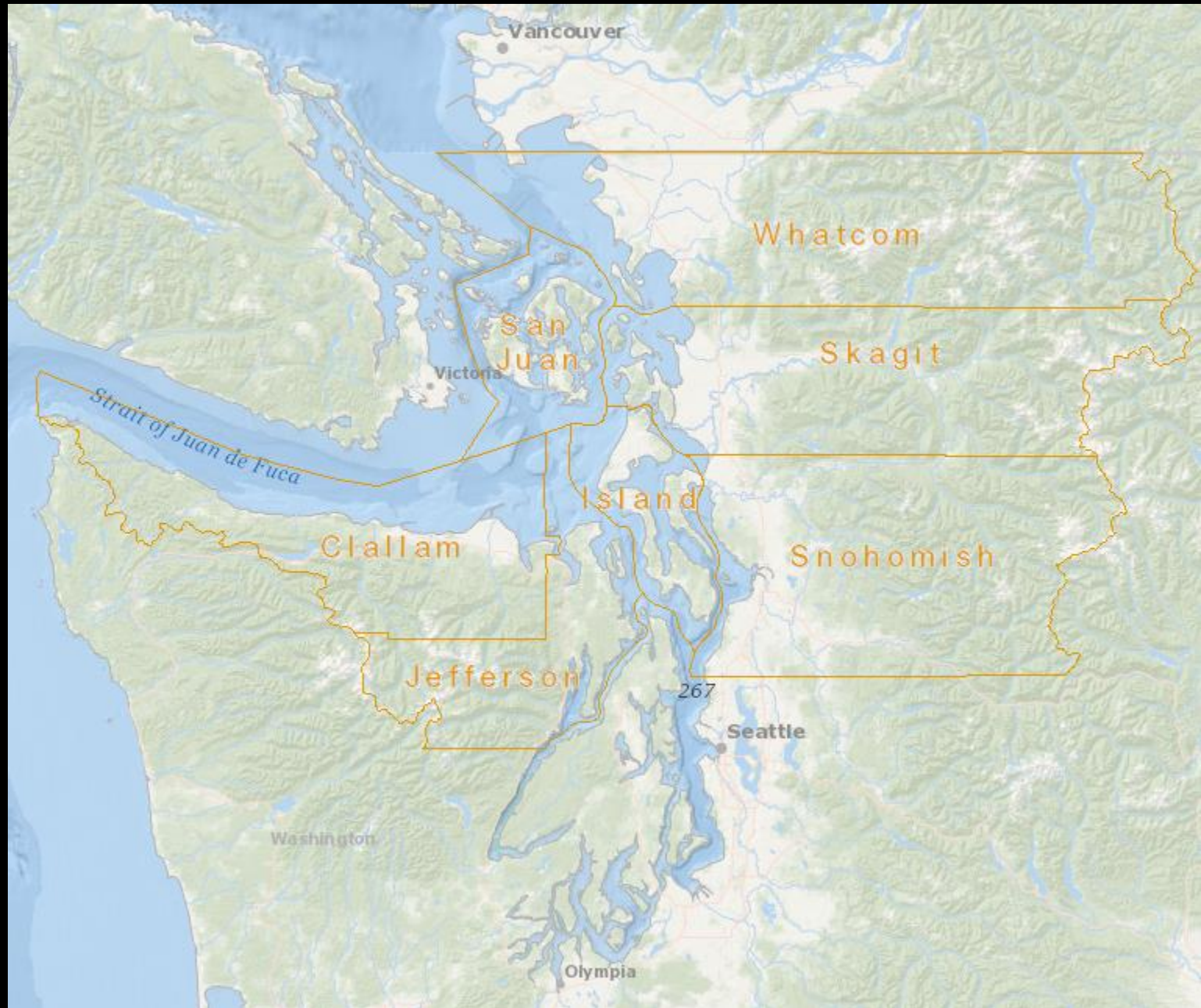
NOAA Sanctuary proposed in 1980's



Senator Patty Murray (D) Congressman Jack Metcalf (R) seek alternative to sanctuary in response to local concern



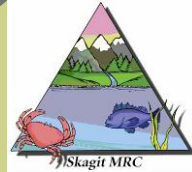
Bottom-up approach proposed  
(Modeled after San Juan Marine Resources Committee)





**Northwest  
Straits**  
INITIATIVE

*partners in marine conservation*



**CLALLAM COUNTY**  
Marine Resources Committee



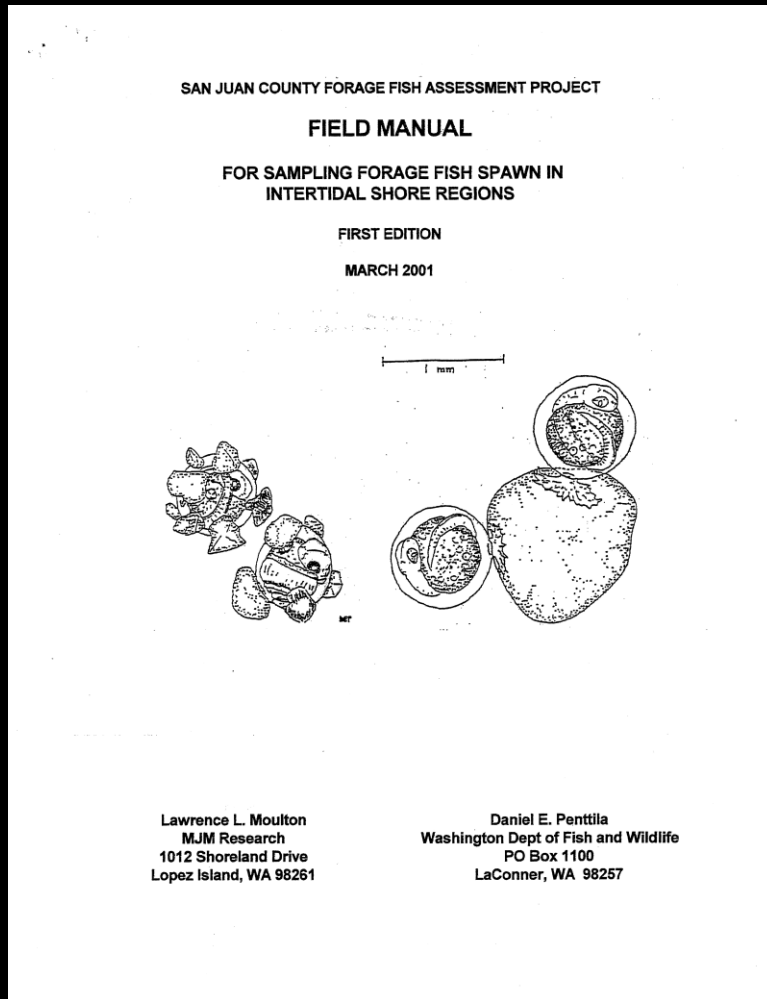
# Northwest Straits Initiative Mission

Protect and restore marine waters,  
species and habitats of the  
Northwest Straits to achieve  
ecosystem health and sustainable  
resource use through a  
**local approach.**

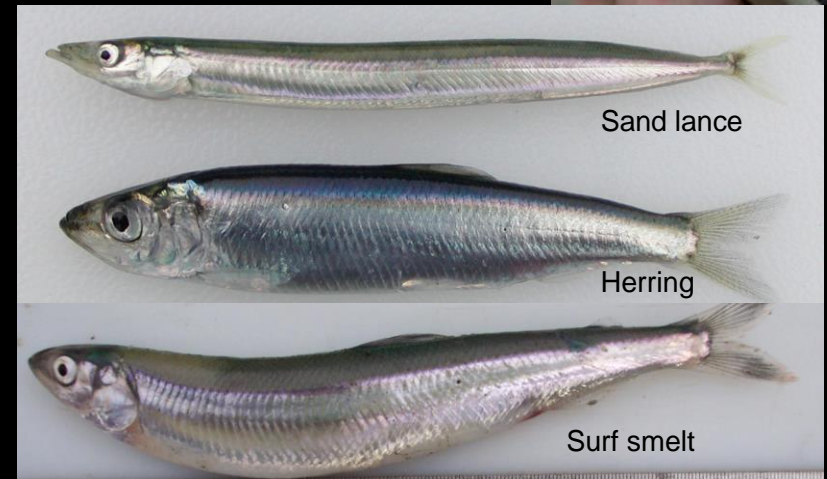
# Partnership with WDFW

- Forage fish monitoring
- Olympia oyster restoration
- Pinto abalone restoration
- Shellfish harvest education
- Crab pot removal and crabber education
- Annual conference

# Forage fish spawn monitoring



Photos: Jeff Taylor



# Forage fish spawn monitoring





# Restoration sampling



# Olympia oyster restoration

Since 2002

7

Acres of Olympia oyster habitat restoration and enhancement

14

Test plots to identify new restoration sites

1,746

Bags of shell placed to enhance habitat

2,940,000+

Olympia oyster seed added

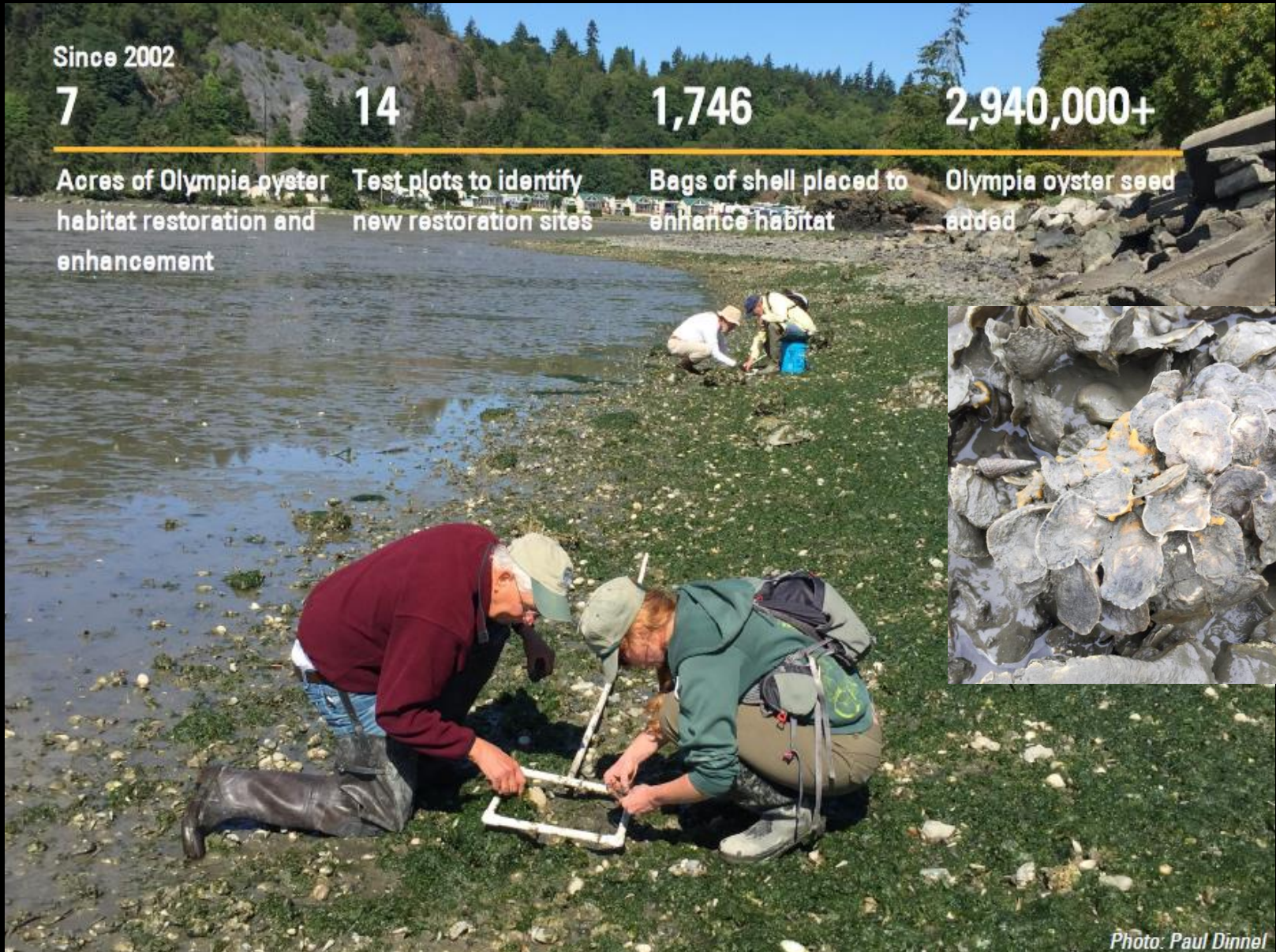


Photo: Paul Dinnel

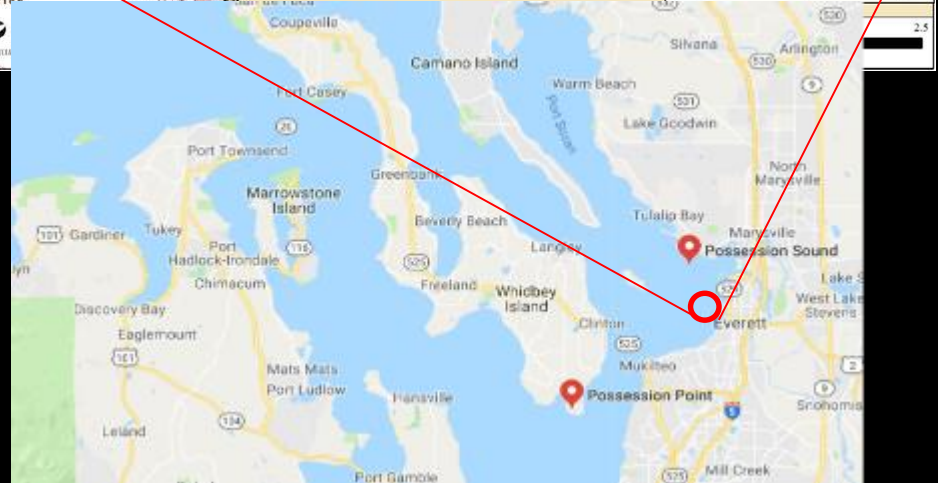
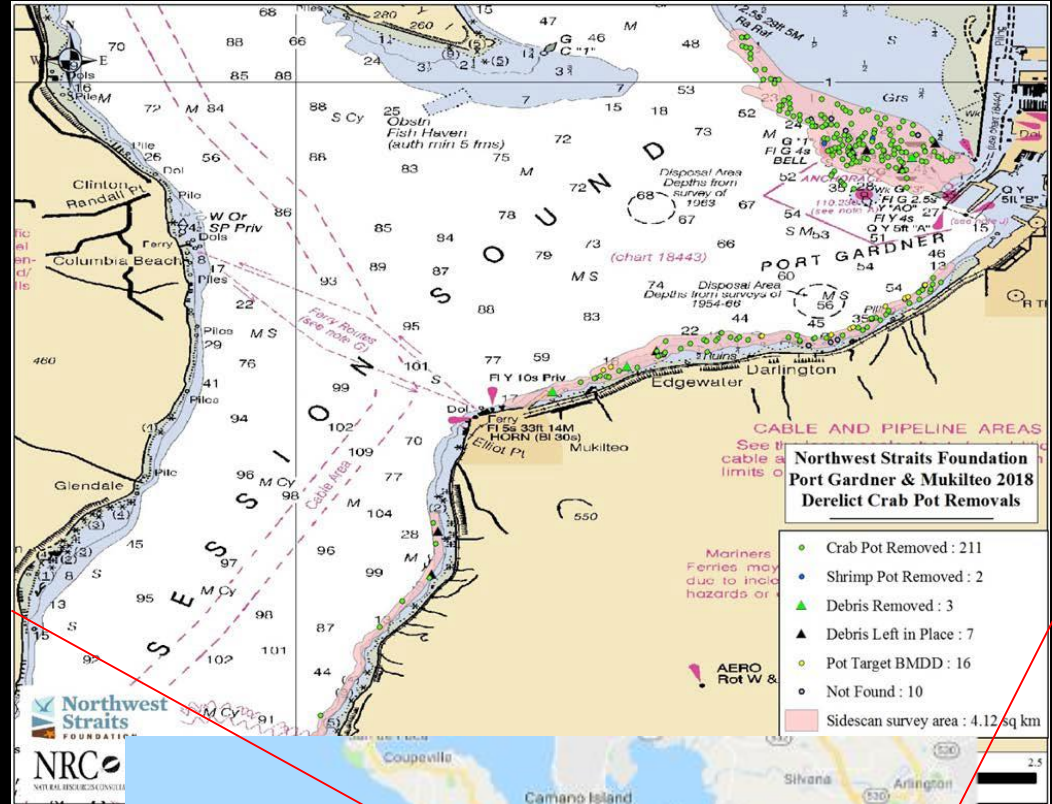
# Pinto abalone restoration



# Digging for dinner



# Crab pot removal



# Crabber education



**CATCH  
MORE  
CRAB!**

Did you know 12,000 crab pots are lost in Puget Sound each year?

Check out these seven helpful tips to prevent your crab pot from becoming one of them!

- Avoid high traffic, marine transit and ferry lanes.
- Check tides and currents. Avoid crabbing during strong tidal changes and currents.
- Make buoys more visible. Add a second buoy or a stick and flag.
- Use a weighted line to sink below the surface and avoid being cut by passing boats.
- Weight your crab pots so they do not move with currents or tidal changes.
- Use longer line. Use 1/3 more line than the water depth to allow for changes in tides and currents.
- Secure lid and escape panels with cotton (biodegradable) escape cord. Crabs can escape from lost pots after the cord degrades.

Enter to win new crabbing gear by completing this short survey: <http://goo.gl/fwvhXB>

for more information visit  
**[derelictgear.org](http://derelictgear.org)**





Use Weighted & Longer Line



Check Tides and Currents



Modify your crab pot



# Annual conference





