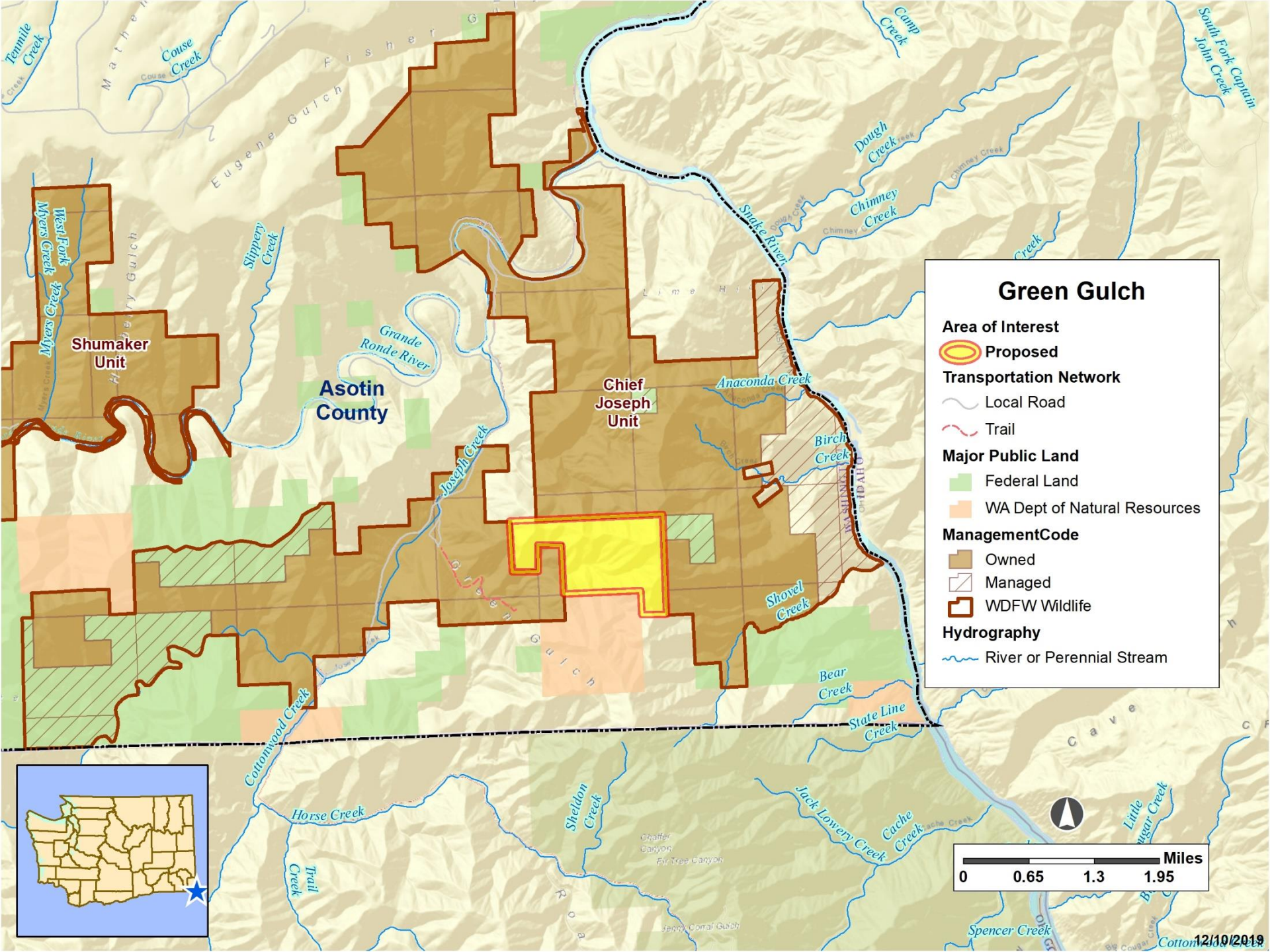




<p>Project Description</p>	<p>The goal of this acquisition is to protect approximately 643 acres of diverse topography that will connect two sides of the Chief Joseph Wildlife Area. Connectivity is important to maintain since it allows wildlife species unimpeded access and travel from one section of WDFW land to another section.</p>
<p>Project Benefits</p>	<p>As well as the project providing connectivity for mule deer, rocky mountain elk and other species, this project will provide a great deal of recreational opportunity such as, hunting, hiking, horseback riding, mountain biking, and bird watching. Ownership of this inholding parcel will allow WDFW to efficiently manage the landscape with operational activities such as prescribed fire and noxious weed control.</p>
<p>Support</p>	<p>Asotin County Lands Committee Asotin County Sportsmen’s Association Rocky Mountain Elk Foundation</p>



Green Gulch

- Area of Interest**
- Proposed
- Transportation Network**
- Local Road
- Trail
- Major Public Land**
- Federal Land
- WA Dept of Natural Resources
- ManagementCode**
- Owned
- Managed
- WDFW Wildlife
- Hydrography**
- River or Perennial Stream

