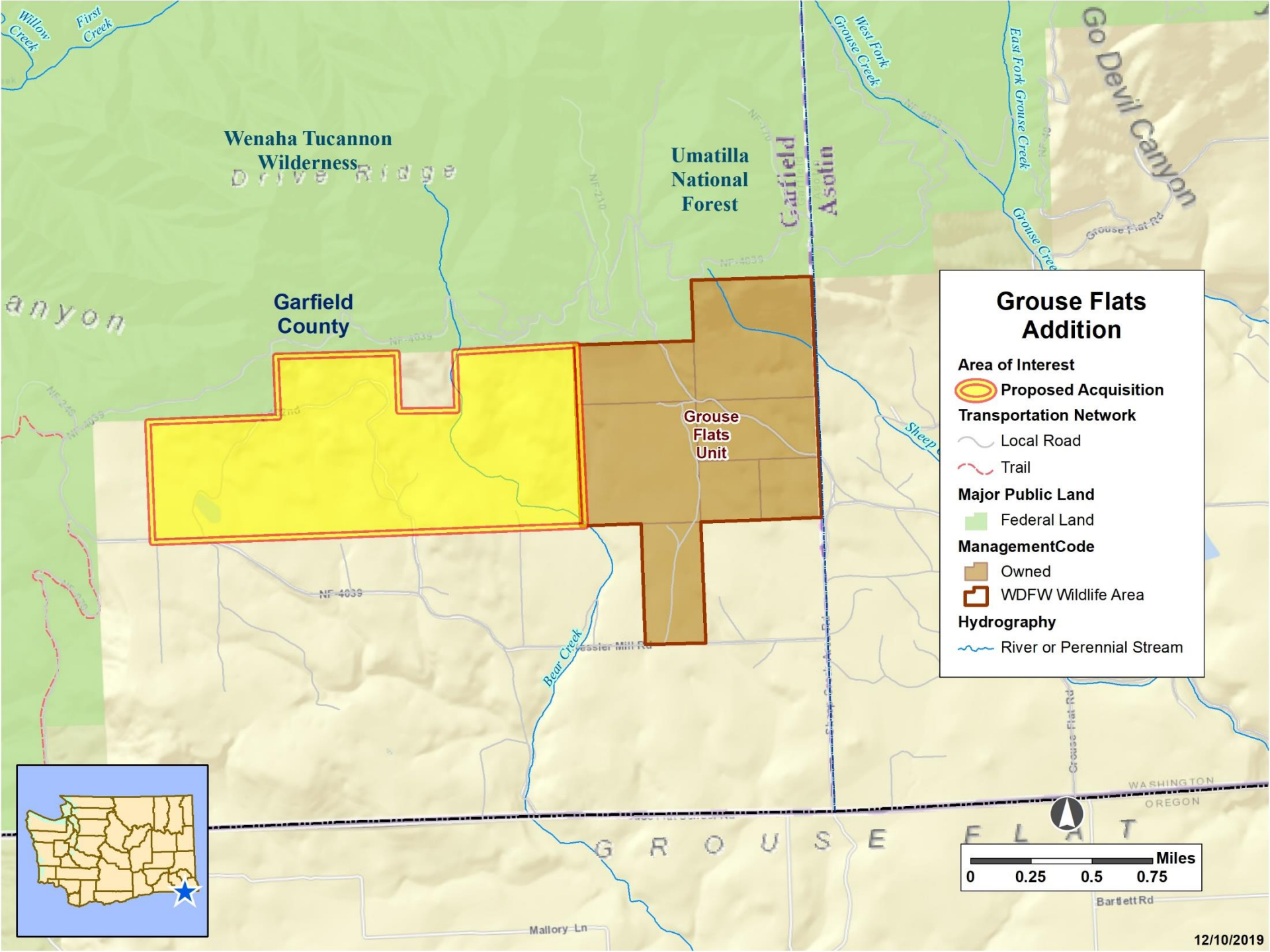




<p><b>Project Description</b></p>	<p>Acquiring this property will connect a wildlife rich area to the Grouse Flats Wildlife Area. The property is heavily used by elk, deer, bears, cougars, and wolves with many non-game species present. Numerous springs, wetlands, and Bear Creek on the property will continue to provide quality riparian habitat that should improve over time in public ownership.</p>
<p><b>Project Benefits</b></p>	<p>The acquisition of this property would protect long term wildlife values while increasing recreational opportunities in this remote portion of the state. Recreational opportunities include increased hunting access for big game species in a popular area.</p>
<p><b>Support</b></p>	<p>Rocky Mountain Elk Foundation</p>



## Grouse Flats Addition

- Area of Interest**
  - Proposed Acquisition
- Transportation Network**
  - Local Road
  - Trail
- Major Public Land**
  - Federal Land
- ManagementCode**
  - Owned
  - WDFW Wildlife Area
- Hydrography**
  - River or Perennial Stream

