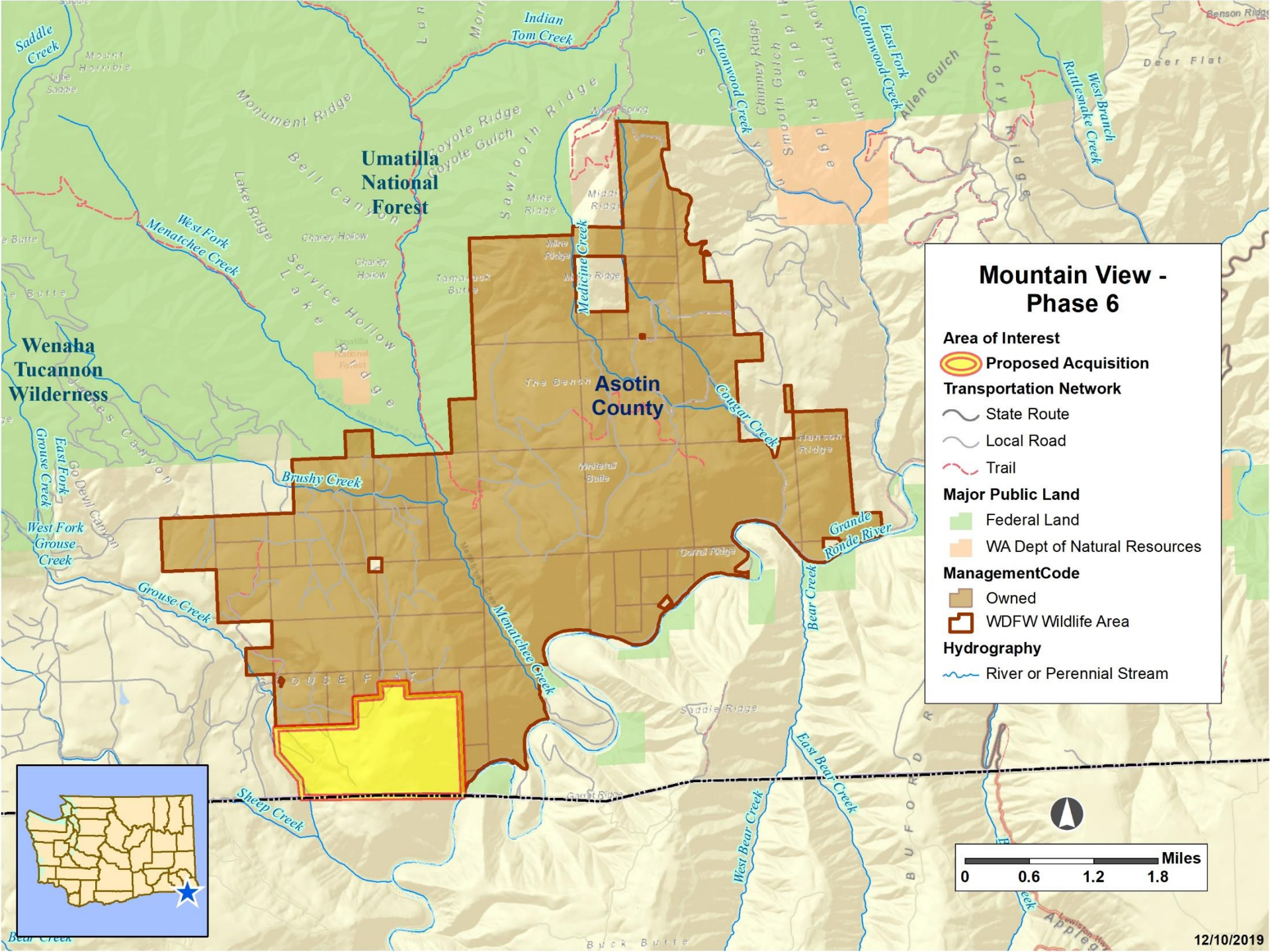




<p><b>Project Description</b></p>	<p>This acquisition would complete the sixth and final phase of a larger property in Asotin County. The project contains an extraordinary range of diverse high quality habitat, including riparian, grassland, pine cliffs, and talus. In addition to the 15 miles of river creeks and riparian habitats, numerous upland species will benefit from acquisition of this property.</p>
<p><b>Project Benefits</b></p>	<p>Besides conservation on this property, benefits will include many recreational opportunities, including hunting, hiking, and wildlife viewing.</p>
<p><b>Support</b></p>	<p>Rocky Mountain Elk Foundation</p>



**Umatilla National Forest**

**Asotin County**

**Wenaha Tucannon Wilderness**

### Mountain View - Phase 6

- Area of Interest**
- Proposed Acquisition
- Transportation Network**
- State Route
- Local Road
- Trail
- Major Public Land**
- Federal Land
- WA Dept of Natural Resources
- ManagementCode**
- Owned
- WDFW Wildlife Area
- Hydrography**
- River or Perennial Stream

