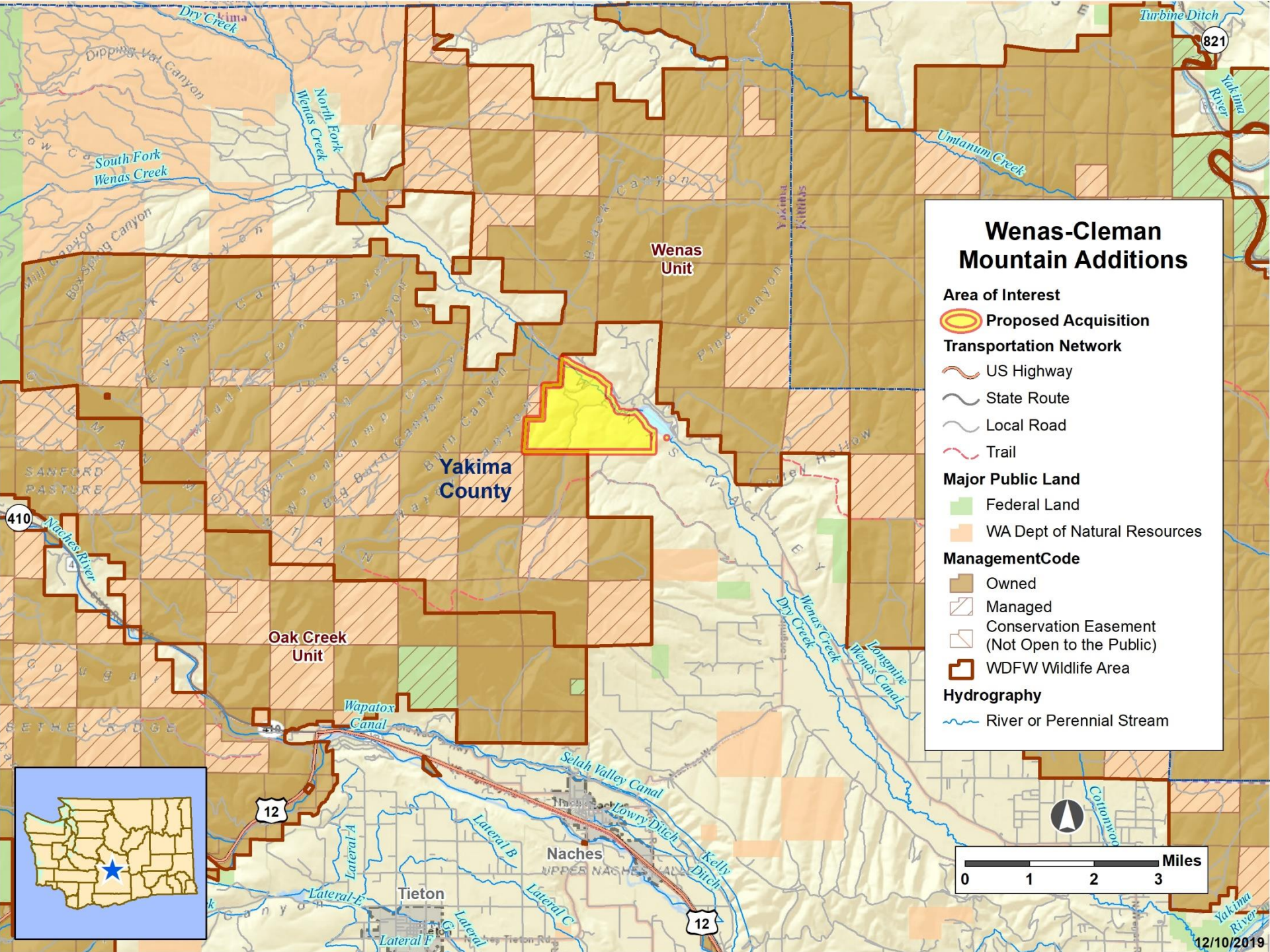




<p>Project Description</p>	<p>The property proposal is a combination of a conservation easement on habitat land and acquisition of infrastructure area for potential wildlife area headquarters. The conservation easement will protect habitat values including shrubsteppe, flood plain, wetland, and riparian habitat.</p>
<p>Project Benefits</p>	<p>The property would provide hunting, fishing, wildlife viewing, birding, hiking and photography as well as the conservation of diverse habitats. The existing infrastructure would provide a more public headquarters for the Wenas Wildlife Area, with office space for all employees, storage for equipment and hay, meeting space and opportunities for interagency coordination, community outreach and education.</p>
<p>Support</p>	<p>Cowiche Canyon Conservancy, Yakima Audubon, and Washington State Audubon</p>



Wenas-Cleman Mountain Additions

Area of Interest

- Proposed Acquisition

Transportation Network

- US Highway
- State Route
- Local Road
- Trail

Major Public Land

- Federal Land
- WA Dept of Natural Resources

ManagementCode

- Owned
- Managed
- Conservation Easement (Not Open to the Public)
- WDFW Wildlife Area

Hydrography

- River or Perennial Stream

