

# Agenda Item # 5

## Lands 20/20



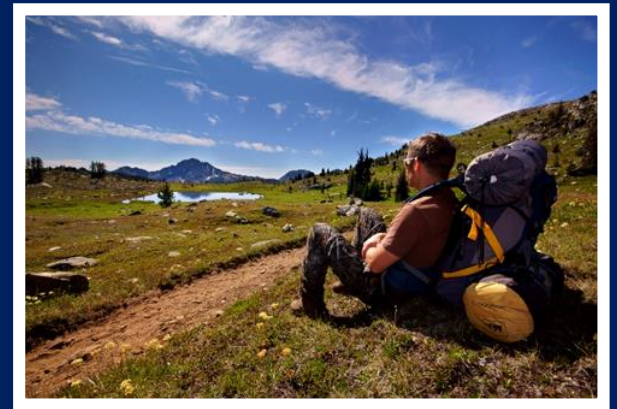
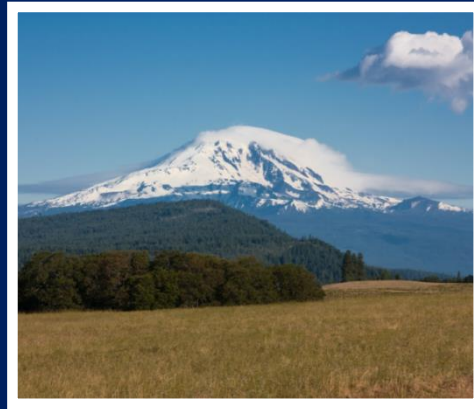
*Washington Department of*  
**FISH and WILDLIFE**

Cynthia Wilkerson  
Lands Division Manager  
Wildlife Program

February 7 & 8, 2020, Commission Meeting Presentation

# WDFW Lands

Protecting Land and Water for Wildlife and People



*Our vision is a Washington where fish and wildlife thrive in healthy habitats, and where people experience and enjoy our state's natural gifts for generations to come.*

# WDFW Lands

## Protecting Land and Water for Wildlife and People



- Provide access for fishing, hunting, and other wildlife related recreation
- Foster experiences and exploration
- Preserve natural and cultural heritage

# Why Does WDFW Buy Land?

## Protecting Land and Water for Wildlife and People

- Conserve and restore the diversity of Washington's fish and wildlife species and habitats
- Enhance sustainable fishing, hunting and other wildlife-related outdoor opportunities
- Improve management of current WDFW Lands
- Preserve working lands for agriculture, forestry, and other sectors of the outdoor economy, particularly in rural areas



# Questions WDFW Asks

## Protecting Land and Water for Wildlife and People

- Willing seller
- Partnerships
- Best Conservation Alternatives?
- Conservation easements?
- Long-term opportunities and ecological values
- Larger, contiguous habitats
- Ecological and social importance

# Acquisition Steps

6

Scoping  
and Need

Lands 20/20  
and Funding

Land  
Transaction

Integrating  
Ownership

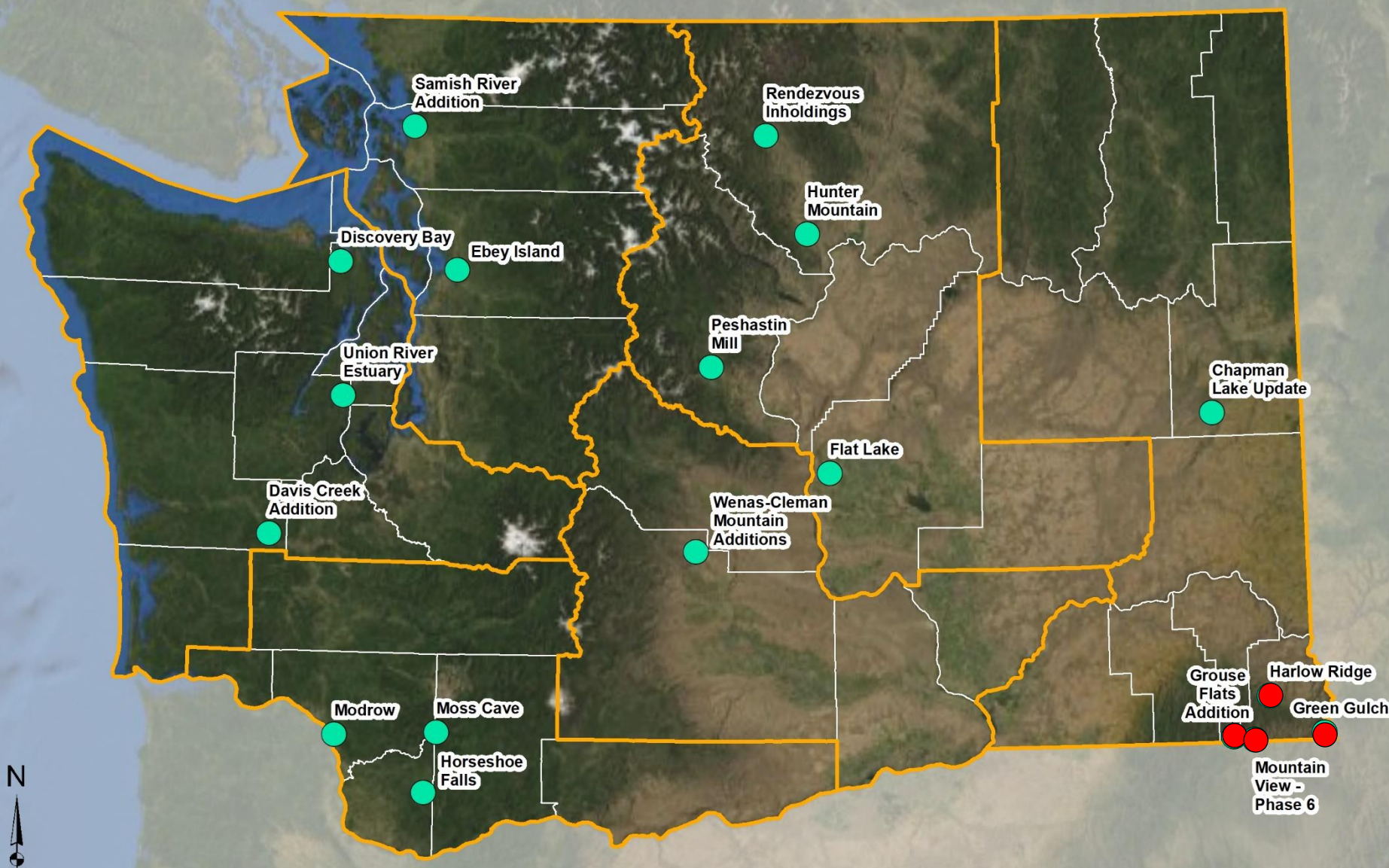


# Acquisition Steps





# WDFW Land Acquisition Project Proposals



**● Projects Proposed in 2020**

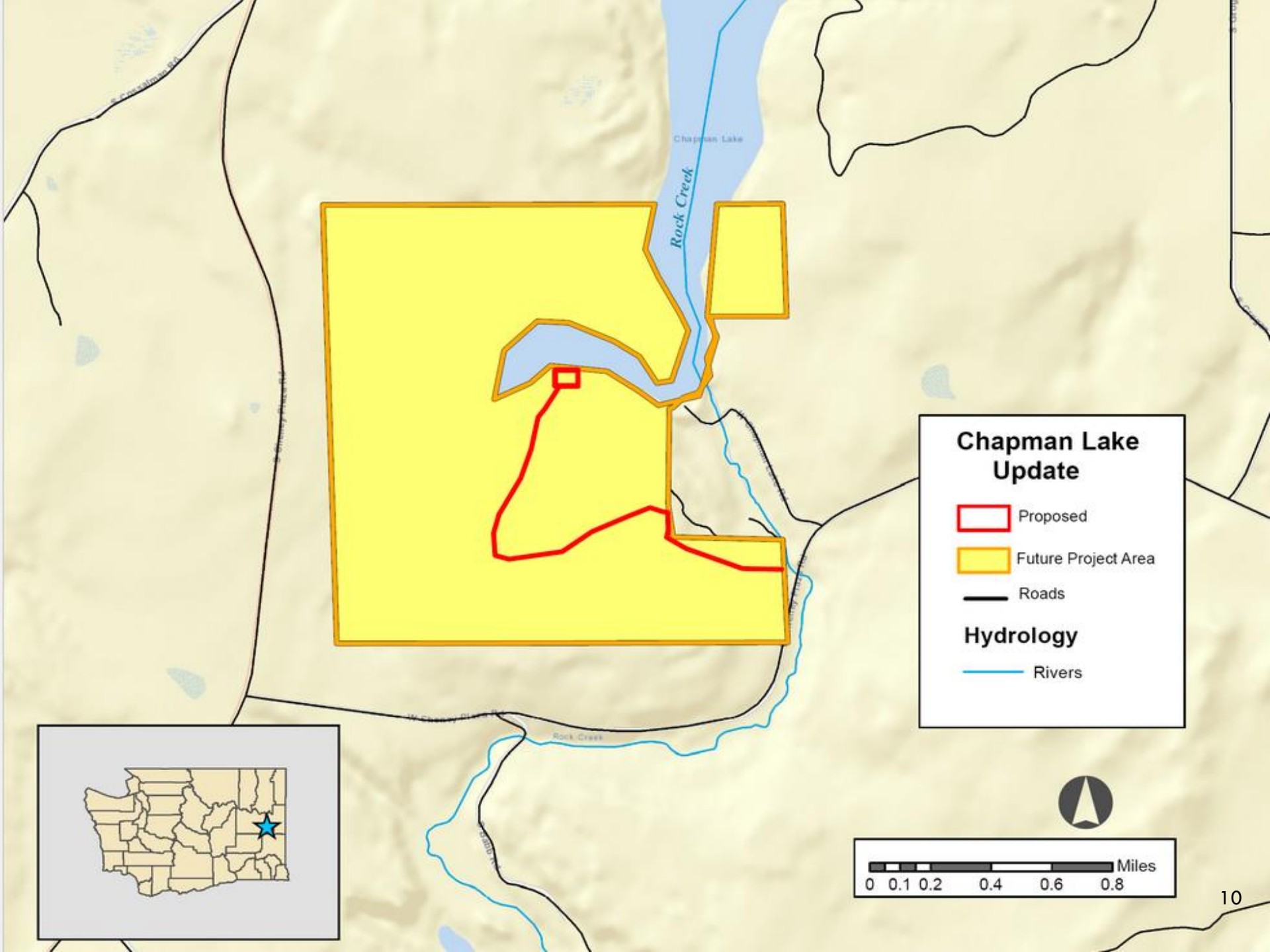
0 10 20 30 40 Miles

12/3/2019



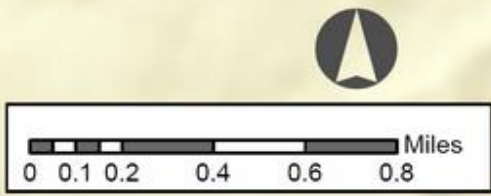
<p><b>Project Description</b></p>	<p>This project ensures public boating access to this lake that was previously accessible only through a private resort which closed in 2011. This project is an update and change of location for the access on the lake. The intent is to purchase road access and a small lakefront footprint with existing grant funds and pursue funding for a land exchange or purchase of the remaining property in this section.</p>
<p><b>Project Benefits</b></p>	<p>Acquisition of this property assures that, once again, anglers can access one of the best bass fisheries in eastern Washington, and one of the only kokanee fisheries in Spokane County. Both of these species generate tremendous angler interest and would ensure extensive use by the public. In addition to anglers using this site, it would also serve as a valuable recreation area for hikers, kayakers, hunters, and wildlife watchers.</p>
<p><b>Support</b></p>	<p>Spokane County Commissioners, Inland Empire Fly Fishing Club, Spokane Fly Fishers</p>





### Chapman Lake Update

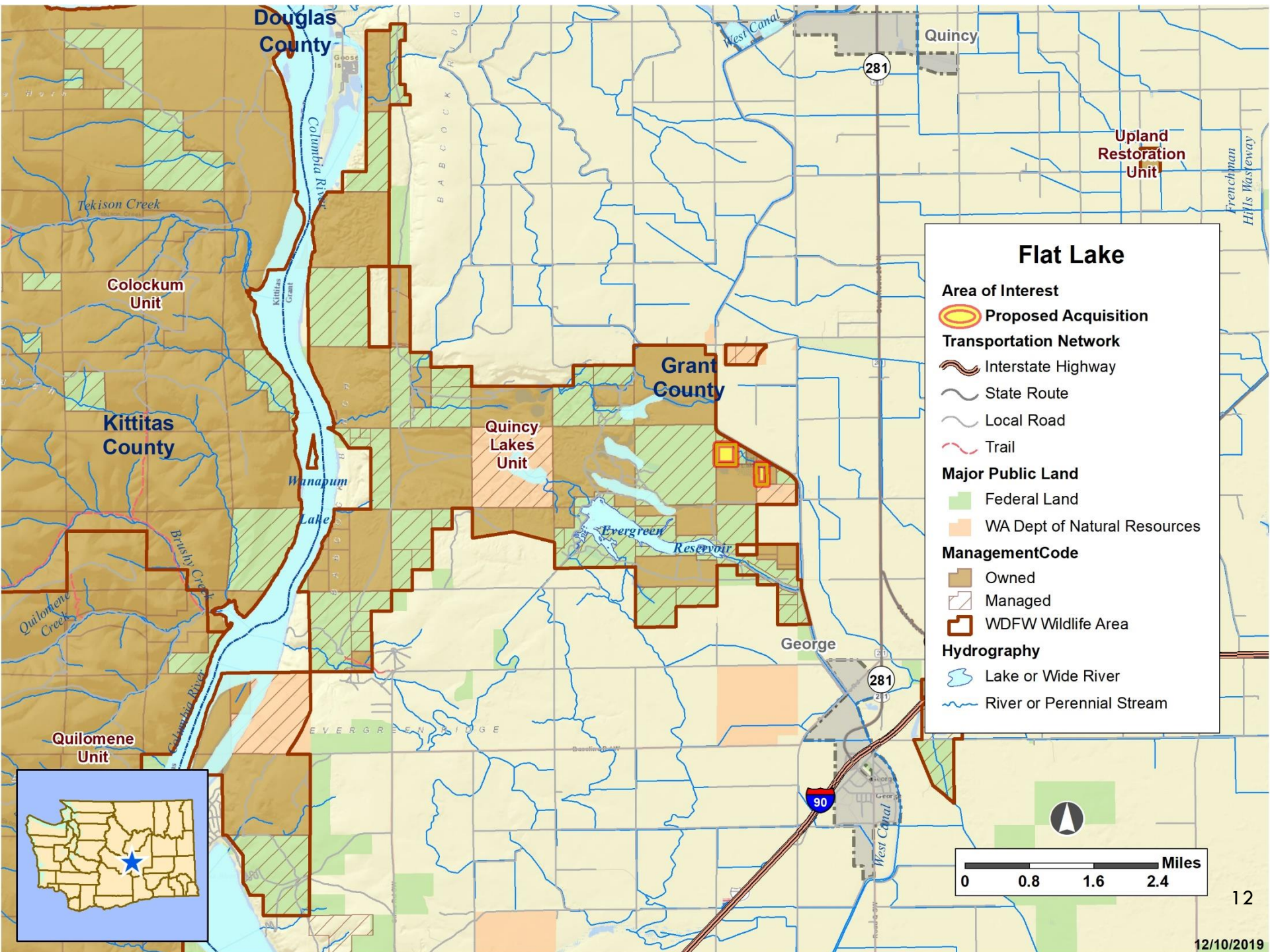
-  Proposed
-  Future Project Area
-  Roads
- Hydrology**
  -  Rivers







<p>Project Description</p>	<p>This property acquisition of two separate parcels totaling 60 acres in Grant County would remove a private inholding within the Quincy Lakes Wildlife Area to ensure development would not occur.</p>
<p>Project Benefits</p>	<p>Recreational opportunities are plenty on this project area and would include hunting for small game, waterfowl, and potentially big game, fishing, and wildlife viewing.</p>
<p>Support</p>	<p>Pheasants Forever and Washington Waterfowl Association</p>

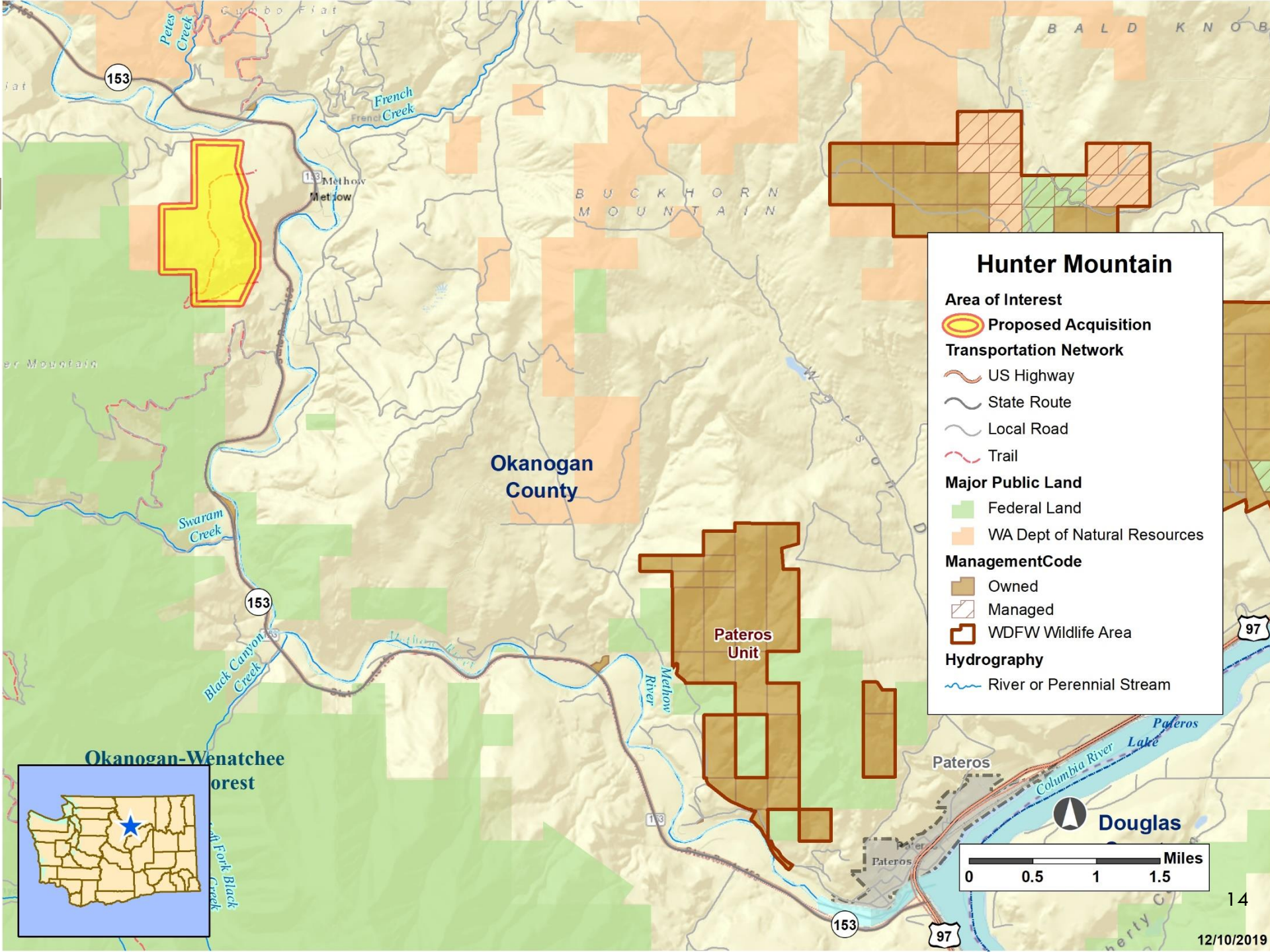






<p><b>Project Description</b></p>	<p>This acquisition project protects crucial sagebrush steppe habitat in the lower Methow Valley and cultivates a critical partnership with Okanogan County. WDFW’s acquisition of this 420 acres provides an opportunity to partner with the county and facilitate their access to additional rock sources for public works projects.</p>
<p><b>Project Benefits</b></p>	<p>Conservation of sagebrush steppe habitat for winter mule deer populations, sagebrush dependent species and the state endangered gray wolf. The acquisition improves species mobility by enhancing the north-south wildlife corridor connecting state and federal lands.</p>
<p><b>Support</b></p>	<p>Okanogan County, Methow Conservancy, North Central Audubon Society, Okanogan Land Trust</p>



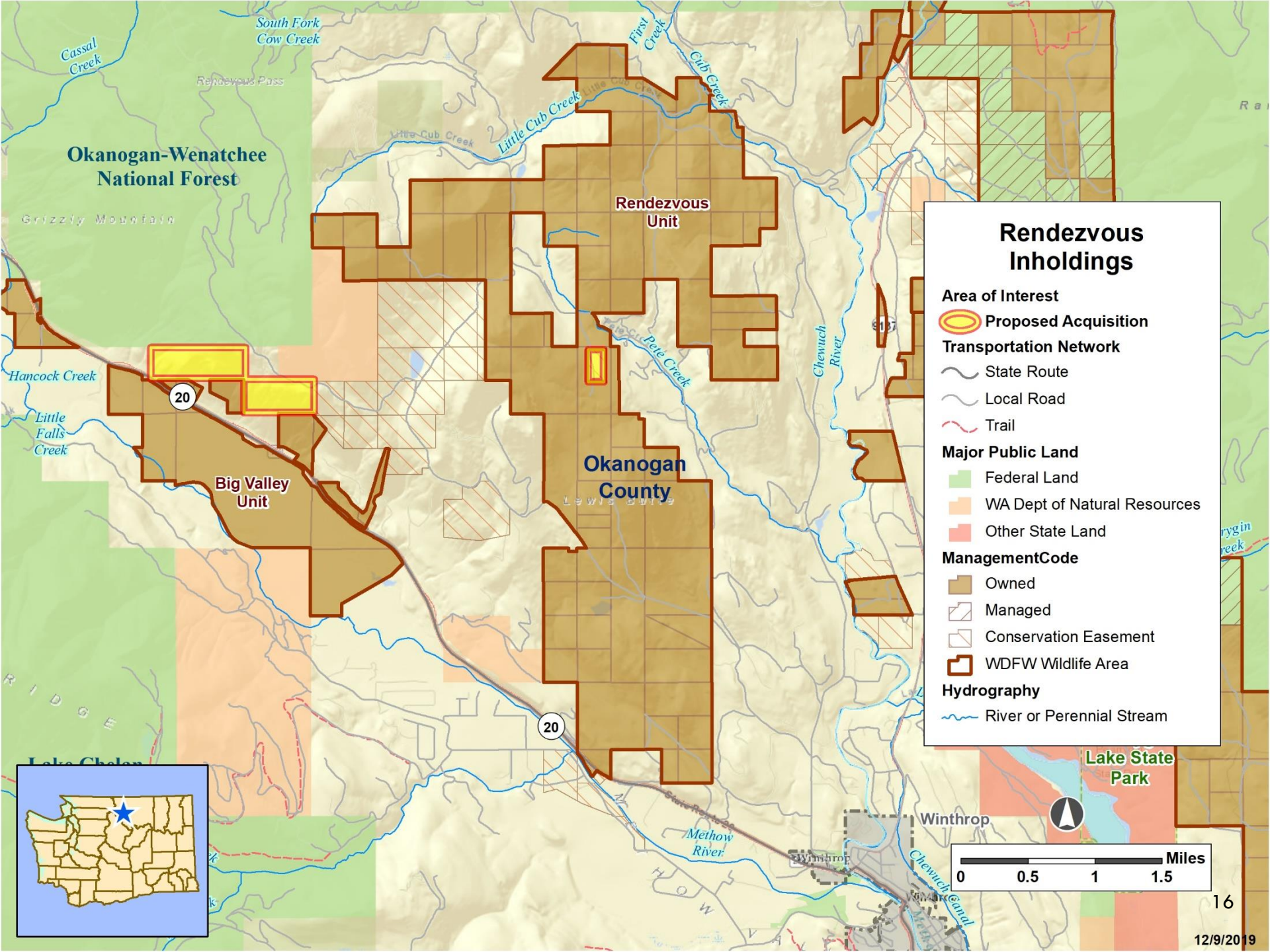






<p><b>Project Description</b></p>	<p>The goal of this project is to acquire three separate parcels owned by two individuals within the Rendezvous Unit and adjacent to the Big Valley Unit of the Methow Wildlife Area. By purchasing these parcels, WDFW protects state imperiled Inter-mountain Basins, Big Sagebrush Steppe and Ponderosa Pine Woodland and Savanna Ecological Systems. In addition, important quaking aspen stands are present throughout and at least one wetland is on the property where a number of amphibian species have been observed.</p>
<p><b>Project Benefits</b></p>	<p>These parcels are within a crucial mule deer migration corridor or stop over area on their journey to and from higher elevations of the Okanogan National Forest or Pasayten Wilderness Area. Adjacent to these parcels are significant state and federal lands where public recreational opportunities are available such as hiking, biking (on USFS and county roads), wildlife watching, and hunting.</p>
<p><b>Support</b></p>	<p>Okanogan County, Methow Conservancy, Methow Valley Citizens Council, Mazama Advisory Committee, North Central Audubon Society, Okanogan Land Trust</p>





**Okanogan-Wenatchee National Forest**

Rendezvous Unit

Big Valley Unit

Okanogan County

**Rendezvous Inholdings**

- Area of Interest**
- Proposed Acquisition
- Transportation Network**
- State Route
- Local Road
- Trail
- Major Public Land**
- Federal Land
- WA Dept of Natural Resources
- Other State Land
- ManagementCode**
- Owned
- Managed
- Conservation Easement
- WDFW Wildlife Area
- Hydrography**
- River or Perennial Stream







<p><b>Project Description</b></p>	<p>This donation project in Chelan County will provide a small parking lot for additional access to the Peshastin Mill Access Area connecting to and complementing a trail that runs .87 miles along the Wenatchee River.</p>
<p><b>Project Benefits</b></p>	<p>Provides public parking where parking did not exist to a small parking area for use of the trail and for wildlife viewing.</p>
<p><b>Support</b></p>	<p>Complete the Loop Coalition, Icicle Chapter of Trout Unlimited</p>

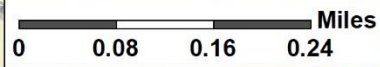
Okanogan-Wenatchee National Forest

### Peshastin Mill

- Area of Interest**
  - Proposed Acquisition
- Transportation Network**
  - US Highway
  - Local Road
  - Trail
- Major Public Land**
  - Federal Land
  - WA Dept of Natural Resources
- ManagementCode**
  - Owned
- Hydrography**
  - River or Perennial Stream

Chelan County

Peshastin

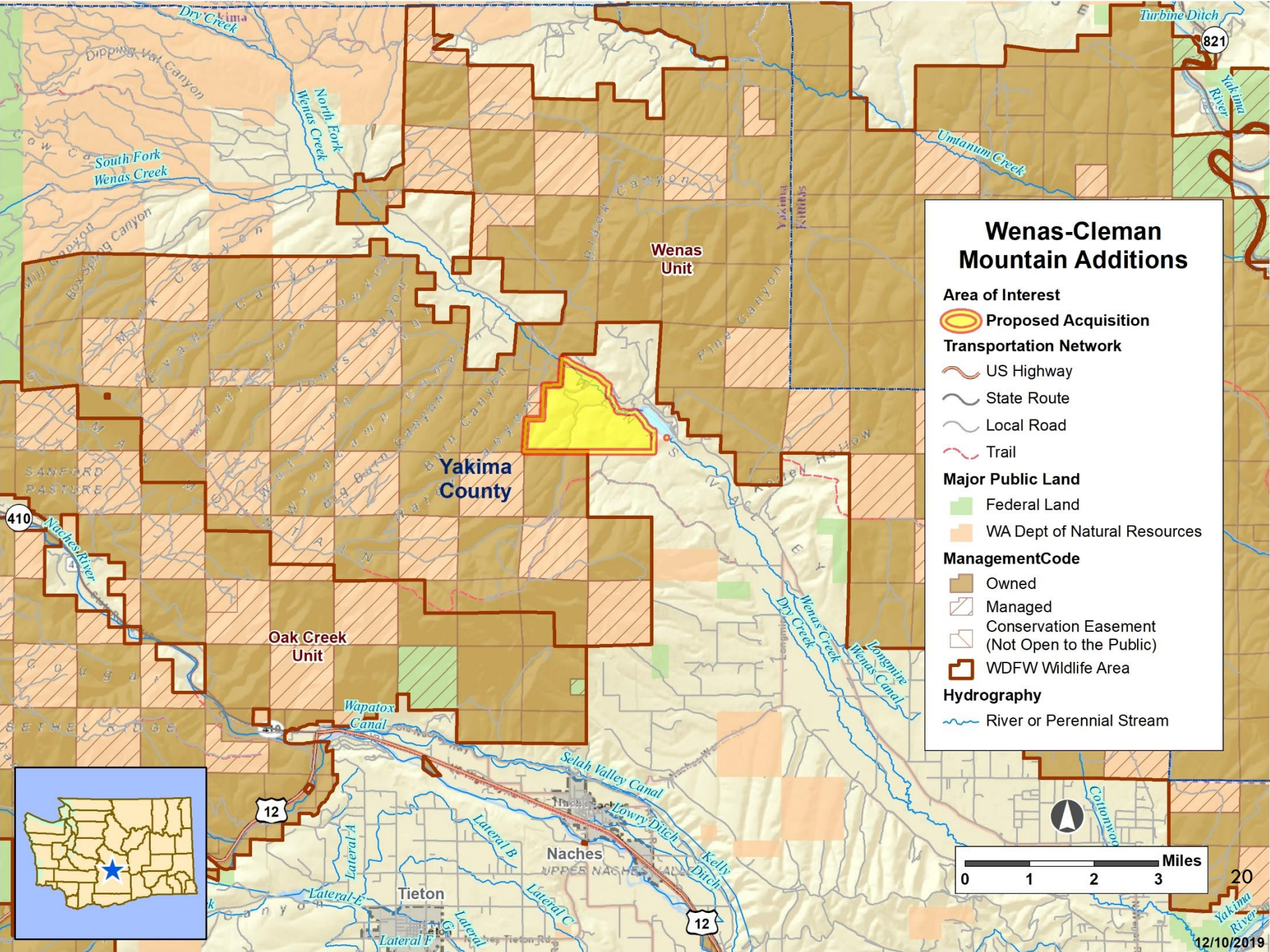






<p><b>Project Description</b></p>	<p>This property proposal is a acquisition and/or conservation easement on habitat land along with an infrastructure area for potential wildlife area headquarters. The conservation easement will protect habitat values including shrubsteppe, flood plain, wetland, and riparian habitat.</p>
<p><b>Project Benefits</b></p>	<p>The property would provide hunting, fishing, wildlife viewing, birding, hiking and photography as well as the conservation of diverse habitats. The existing infrastructure would provide a more public headquarters for the Wenas Wildlife Area, with office space for all employees, storage for equipment and hay, meeting space and opportunities for interagency coordination, community outreach and education.</p>
<p><b>Support</b></p>	<p>Cowiche Canyon Conservancy, Yakima Audubon, and Washington State Audubon</p>





## Wenas-Cleman Mountain Additions

- Area of Interest**
- Proposed Acquisition
- Transportation Network**
- US Highway
  - State Route
  - Local Road
  - Trail
- Major Public Land**
- Federal Land
  - WA Dept of Natural Resources
- ManagementCode**
- Owned
  - Managed
  - Conservation Easement (Not Open to the Public)
  - WDFW Wildlife Area
- Hydrography**
- River or Perennial Stream



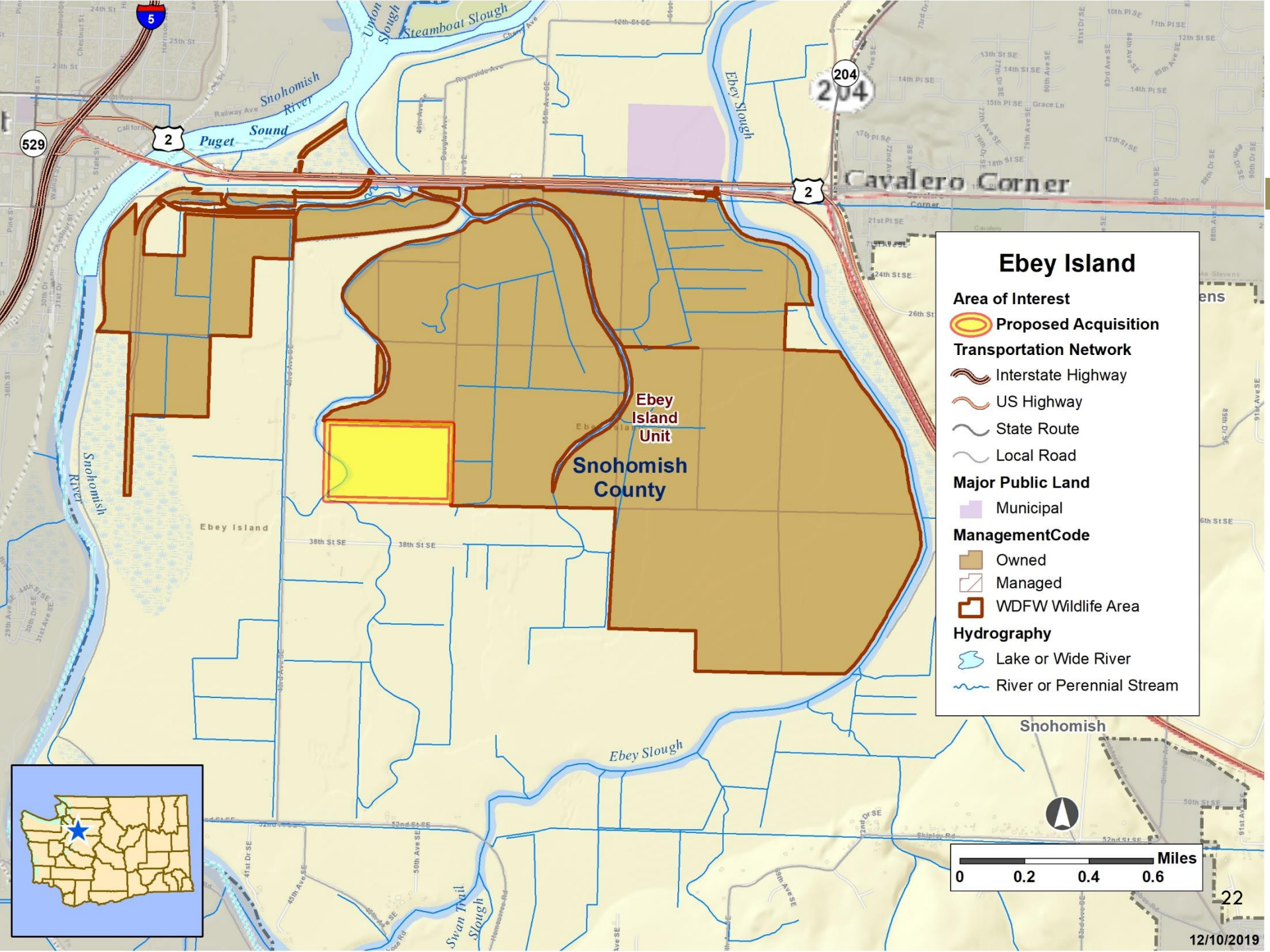


# Ebey Island – 58 Acres

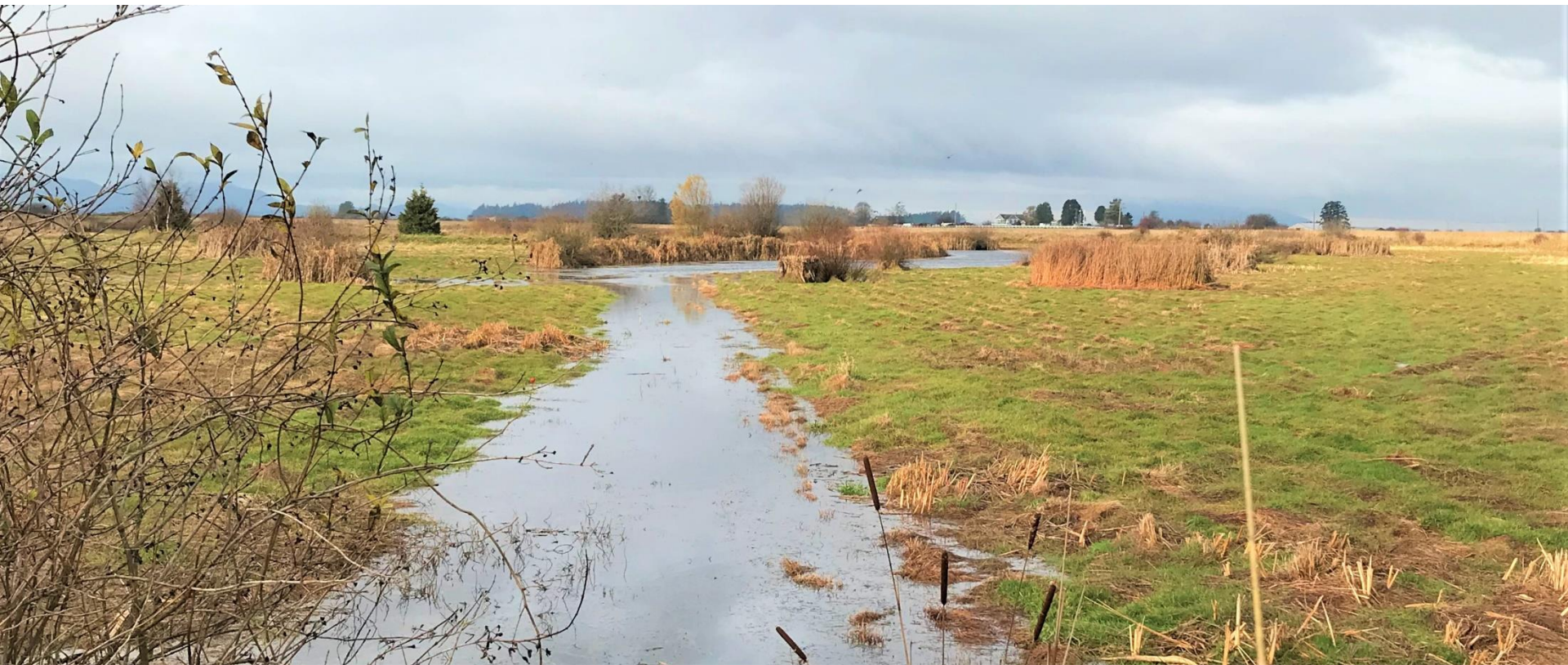


<p><b>Project Description</b></p>	<p>This project acquisition of approximately 58 acres includes a 25-acre managed open wetland and 20 acres of forested wetland adjacent to the Snoqualmie Wildlife Area’s Ebey Island Unit.</p>
<p><b>Project Benefits</b></p>	<p>The property provides wetland habitats that benefit amphibians, shorebirds, raptors, and waterfowl and will also provide recreational access for hunting and wildlife viewing.</p>
<p><b>Support</b></p>	<p>Ducks Unlimited</p>

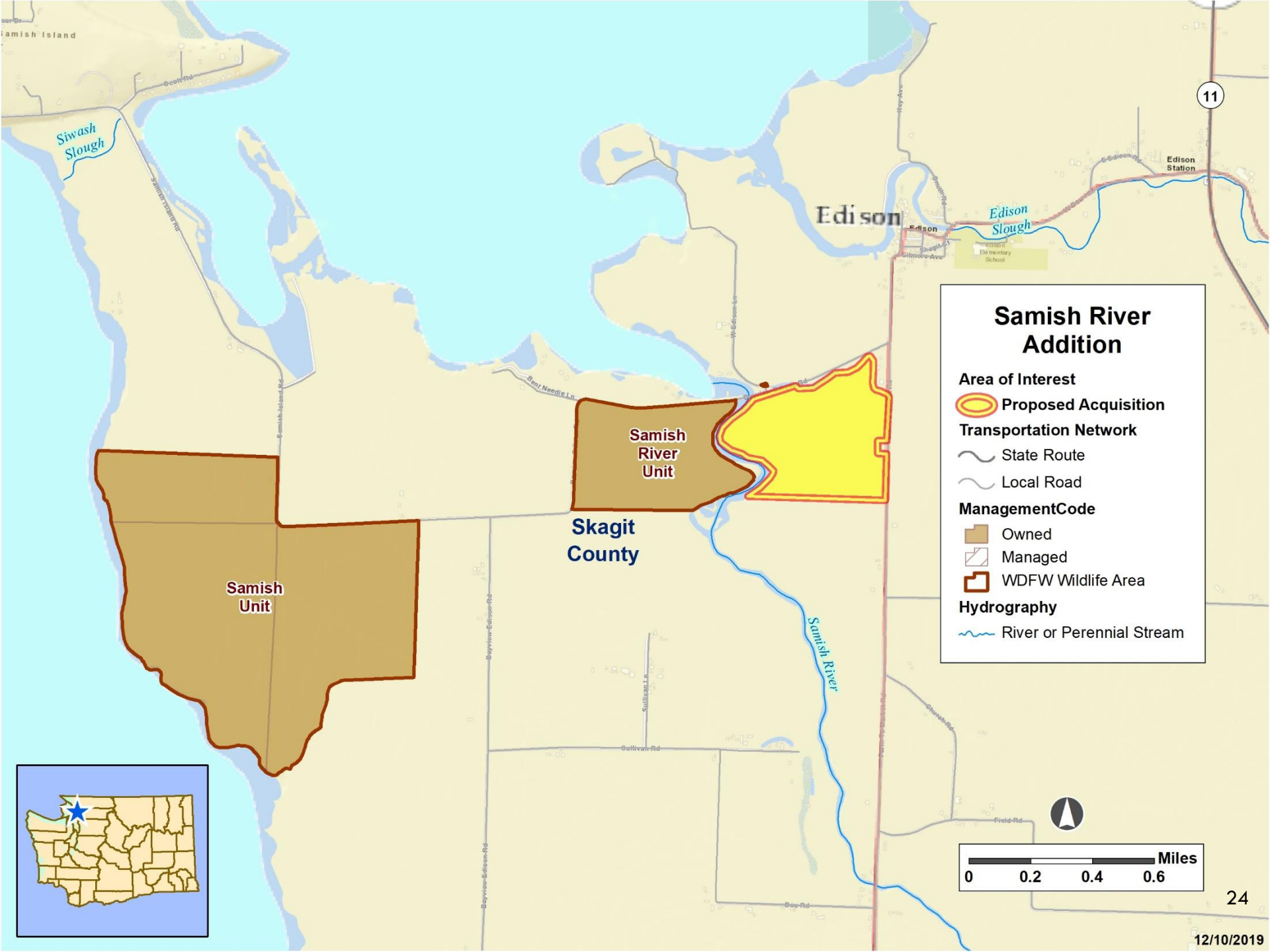








<p><b>Project Description</b></p>	<p>This project would acquire approximately 109 acres, which includes 23 acres of managed wetland and water access to the Samish River.</p>
<p><b>Project Benefits</b></p>	<p>Ownership of this property will provide recreational fishing, hunting, bird watching, and photography access. Acquisition of this property will contribute significantly to improving fishing access that is in high demand on the Samish River. This seasonal wetland with water control infrastructure and agricultural fields will provide habitat for waterfowl, shorebirds, and raptors.</p>
<p><b>Support</b></p>	<p>Skagit County Commissioners</p>



11

Edison

## Samish River Addition

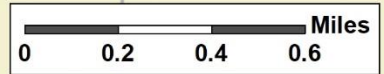
- Area of Interest**
- Proposed Acquisition
- Transportation Network**
- State Route
  - Local Road
- ManagementCode**
- Owned
  - Managed
  - WDFW Wildlife Area
- Hydrography**
- River or Perennial Stream

Samish River Unit

Skagit County

Samish Unit

Samish River

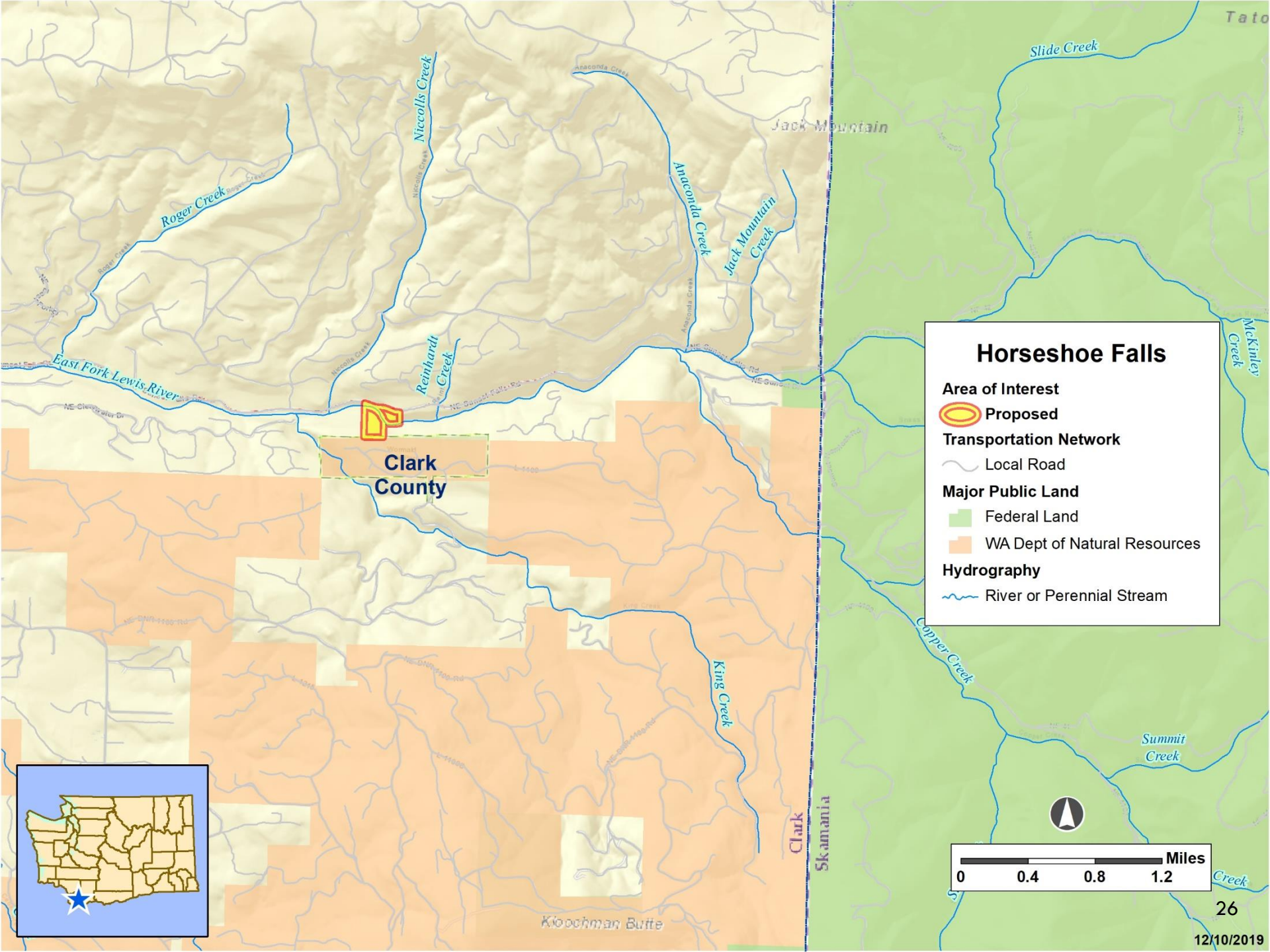






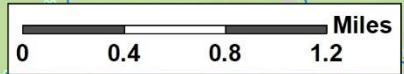
<p><b>Project Description</b></p>	<p>Acquisition of this 20-acre riparian project would provide protection of a known holding pool and staging area for native summer run steelhead.</p>
<p><b>Project Benefits</b></p>	<p>The falls present a stream flow barrier to anadromous fish during winter and spring making the area impassable for a time to steelhead until flows drop at the falls and allow them to continue migration. The site also is an important monitoring location for steelhead and provides recreational opportunities for kayakers moving through the property and on to downstream areas.</p>
<p><b>Support</b></p>	<p>Columbia Land Trust, Clark County, Clark-Skamania Flyfishers</p>





# Horseshoe Falls

- Area of Interest**
  - Proposed
- Transportation Network**
  - Local Road
- Major Public Land**
  - Federal Land
  - WA Dept of Natural Resources
- Hydrography**
  - River or Perennial Stream

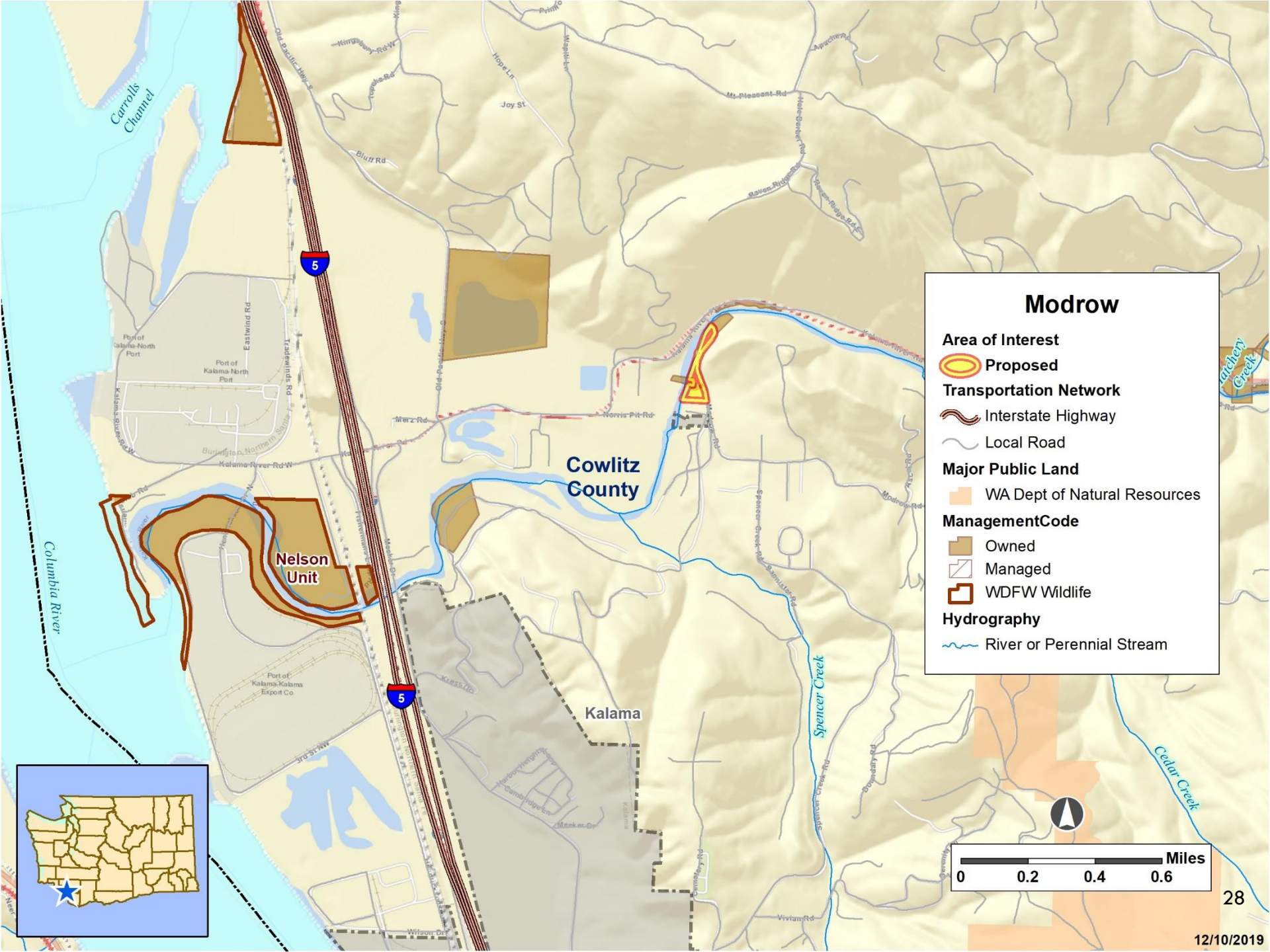






<p><b>Project Description</b></p>	<p>This acquisition project will provide 2.5 acres along the Kalama River for multiple objectives. This acquisition would facilitate the long term conservation of multiple Endangered Species Act listed salmonids by protecting state resources necessary to operate the Modrow Fish Trap and Fallert Creek Hatchery. Additionally it would add approximately 1,000 feet of river access adjacent to the existing Modrow Bridge access area and the Modrow Trap property resulting in connection of both properties.</p>
<p><b>Project Benefits</b></p>	<p>The acquisition would include a building to house staff to ensure the operational integrity of both sites. The connective nature of the acquisition would lend itself to long term conservation of the riparian zone in the Lower Kalama River, increase fishing opportunities, and promote wildlife viewing.</p>
<p><b>Support</b></p>	<p>Cowlitz County</p>





# Modrow

- Area of Interest**
  - Proposed
- Transportation Network**
  - Interstate Highway
  - Local Road
- Major Public Land**
  - WA Dept of Natural Resources
- ManagementCode**
  - Owned
  - Managed
  - WDFW Wildlife
- Hydrography**
  - River or Perennial Stream



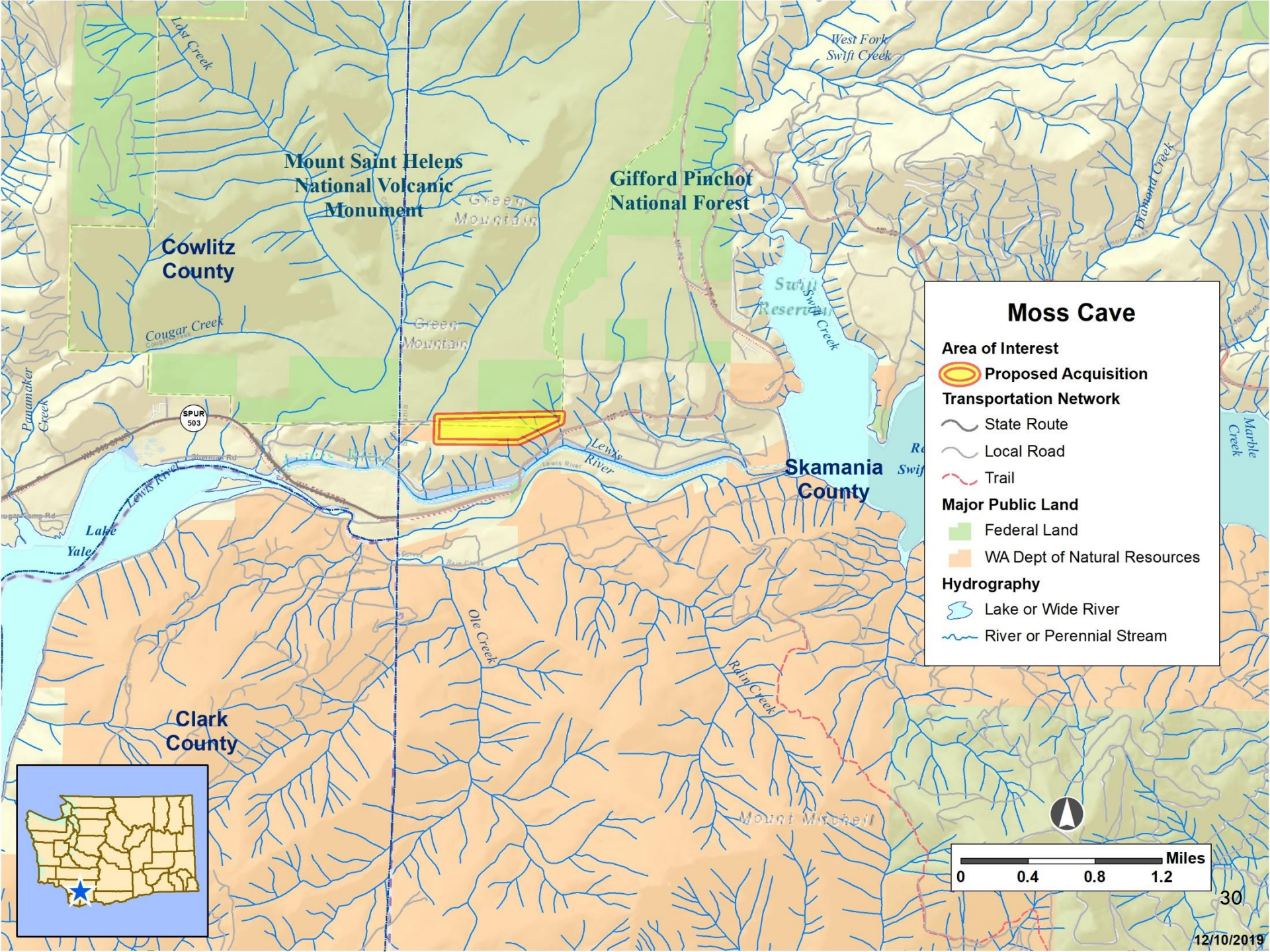


# Moss Cave – 68 Acres



Project Description	This project will result in a conservation easement on 68 acres in Skamania County.
Project Benefits	The project assures perpetual conservation and ensures Washington Dept. of Fish and Wildlife staff access to continue to monitor the bat population that resides in the caves. Recreation including hunting and wildlife viewing would also be allowed.
Support	Pacific Corp, Cowlitz PUD, Cowlitz Tribe, The Nature Conservancy





Mount Saint Helens  
National Volcanic  
Monument

Gifford Pinchot  
National Forest

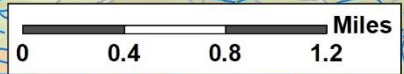
Cowlitz  
County

Skamania  
County

Clark  
County

### Moss Cave

- Area of Interest**
  - Proposed Acquisition
- Transportation Network**
  - State Route
  - Local Road
  - Trail
- Major Public Land**
  - Federal Land
  - WA Dept of Natural Resources
- Hydrography**
  - Lake or Wide River
  - River or Perennial Stream







<p><b>Project Description</b></p>	<p>Acquisition of up to 416 acres adjacent to the Davis Creek Wildlife Area unit will protect Oak woodlands and Chehalis River floodplain habitats that includes fresh water wetlands, river oxbows, and up to 4 miles of riverbank. The addition would maintain riparian corridors and help permanently connect terrestrial wildlife habitats on public lands in Capitol Forest to Chehalis state forest</p>
<p><b>Project Benefits</b></p>	<p>Recreational opportunities here include; waterfowl, upland bird, and big game hunting, fishing, boating, and multiple wildlife watching opportunities. Habitat benefits will apply to various species of fish and wildlife identified as species of greatest conservation need or state priority.</p>
<p><b>Support</b></p>	<p>Ducks Unlimited, Black Hills Chapter of the Audubon Society</p>

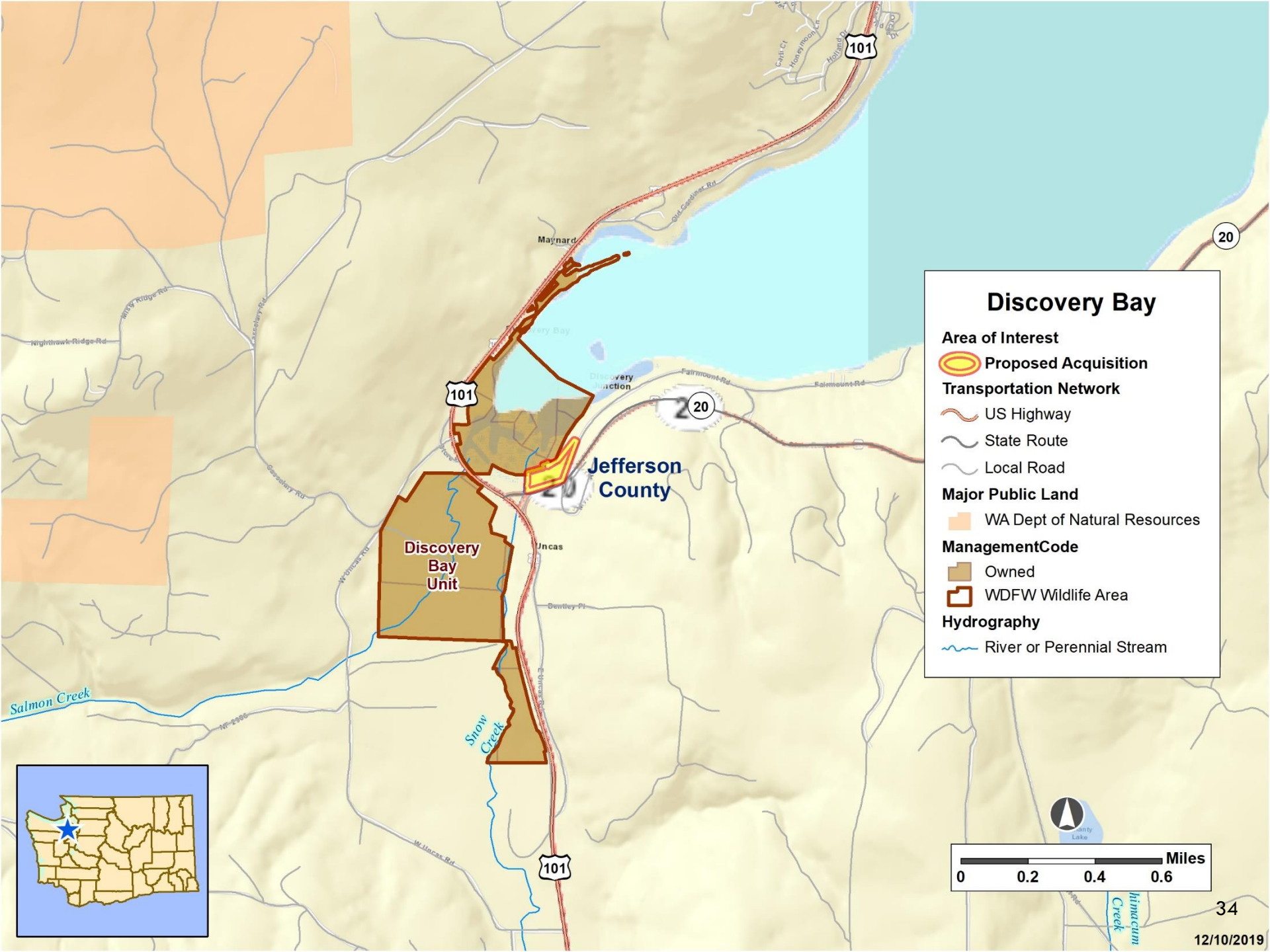






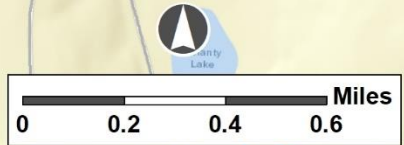


<p><b>Project Description</b></p>	<p>This project is the transfer of 6 acres in the Discovery Bay estuary. The project is adjacent to the Discovery Bay Unit of the North Olympic Wildlife Area in Jefferson County.</p>
<p><b>Project Benefits</b></p>	<p>The transfer continues long term habitat stewardship and increase public access to the estuary with its addition to WDFW’s ownership at Discovery Bay. This property will help reconnect tidal channels and restore upland areas. Public access here will allow recreational shellfish harvest and waterfowl hunting areas.</p>
<p><b>Support</b></p>	<p>North Olympic Salmon Coalition, Jefferson Land trust, and the Hood Canal Coordinating Council</p>



## Discovery Bay

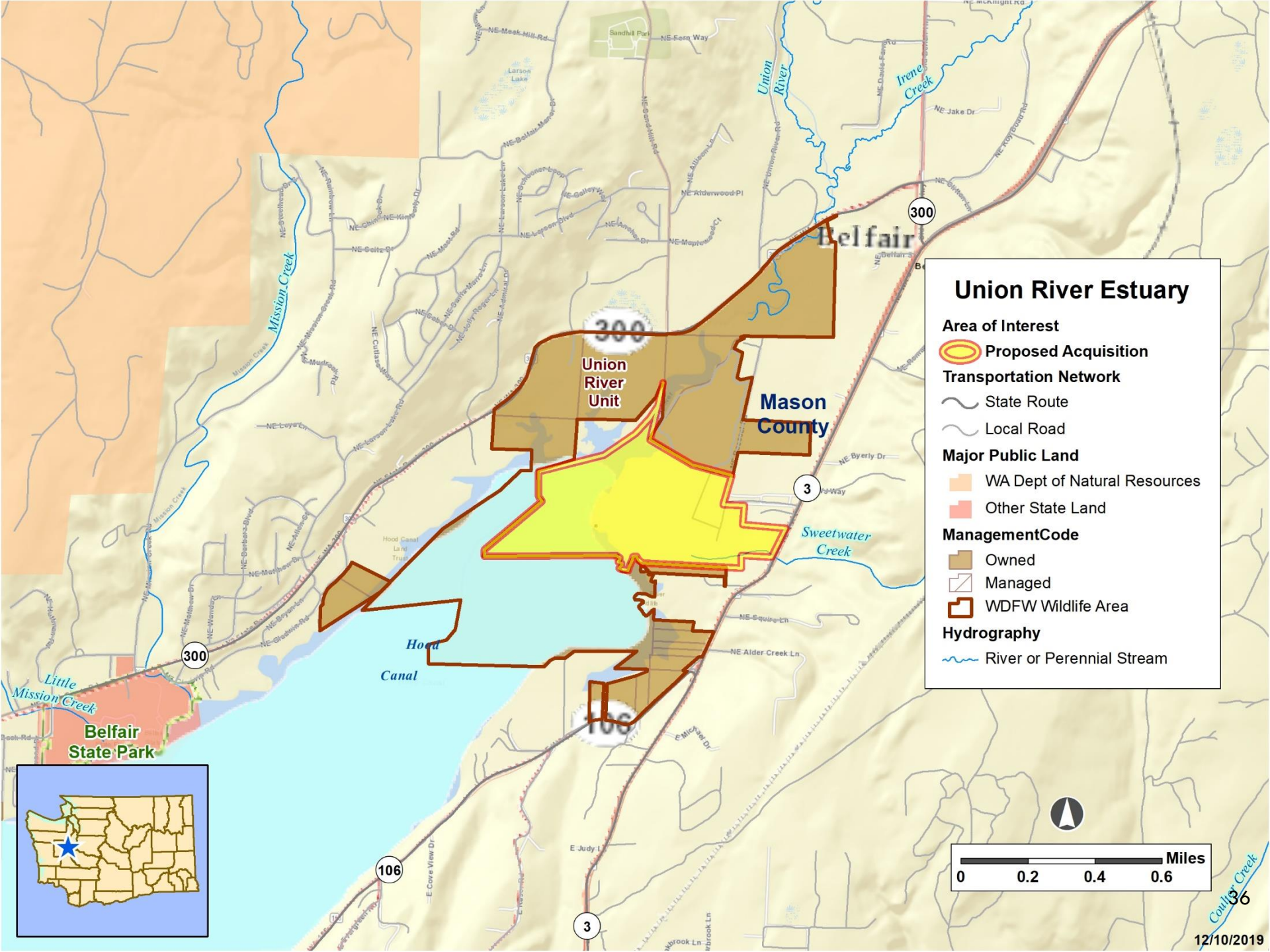
- Area of Interest**
- Proposed Acquisition
- Transportation Network**
- US Highway
- State Route
- Local Road
- Major Public Land**
- WA Dept of Natural Resources
- ManagementCode**
- Owned
- WDFW Wildlife Area
- Hydrography**
- River or Perennial Stream





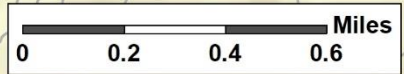


<b>Project Description</b>	This project is a transfer of 160 acres of quality habitat within the Union River Estuary located in Mason County. The project is mostly surrounded by the Union River Wildlife Area Unit.
<b>Project Benefits</b>	Conservation and restoration opportunities of the estuarine habitat for the benefit fish and wildlife species is the key focus of this project. Marine resources include salmonids, forage fish, ground fish, and shellfish. This property also contains a very popular recreational loop trail along the estuary with boardwalks, a pier, and interpretative signs. Washington Department of Fish and Wildlife plans to maintain the public access and education. The location is well known for its wildlife viewing and educational opportunities.
<b>Support</b>	North Mason School District, Hood Canal Salmon Enhancement Group, Black Hills Chapter of the Audubon Society



## Union River Estuary

- Area of Interest**
- Proposed Acquisition
- Transportation Network**
- State Route
- Local Road
- Major Public Land**
- WA Dept of Natural Resources
- Other State Land
- ManagementCode**
- Owned
- Managed
- WDFW Wildlife Area
- Hydrography**
- River or Perennial Stream





# Public Comment Highlights

Public Review – 210 comments  
received

**SUPPORT (~85%)**

- Enhanced open space/outdoor recreation
- Connectivity for wildlife
- Enhanced wildlife habitat and species protection
- Public access

# Public Comment Highlights

## CONCERNS (~15%)

- Potential to making overcrowding of bank fishing worse  
(Samish River)
- Elk damage to fields in Asotin County
- PILT in Asotin County, Garfield County
- Operating budget



# Next Steps

- Director's Final Approval to pursue funding
- Grant applications
- Transaction processing
- Land management



Questions?