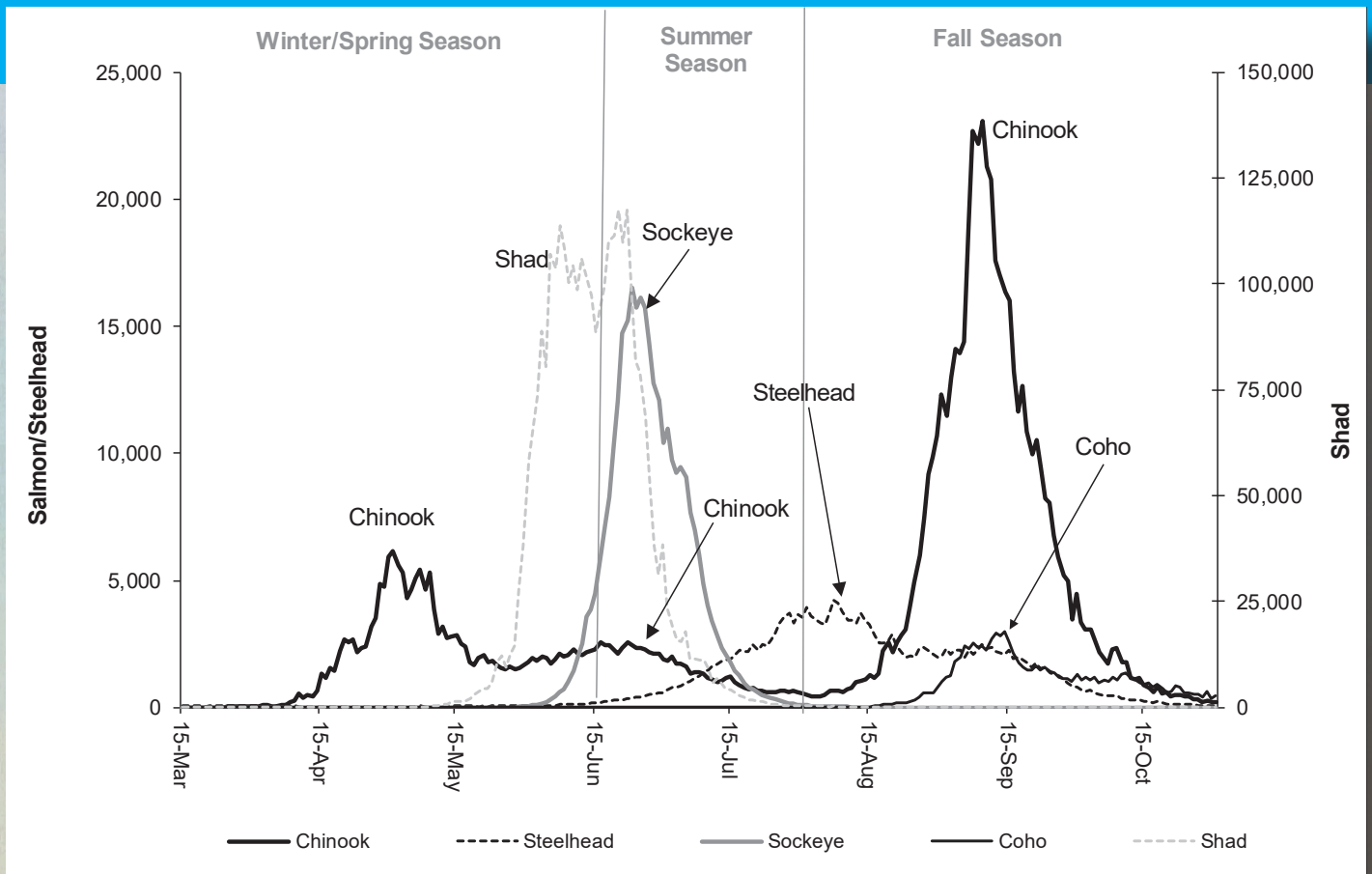
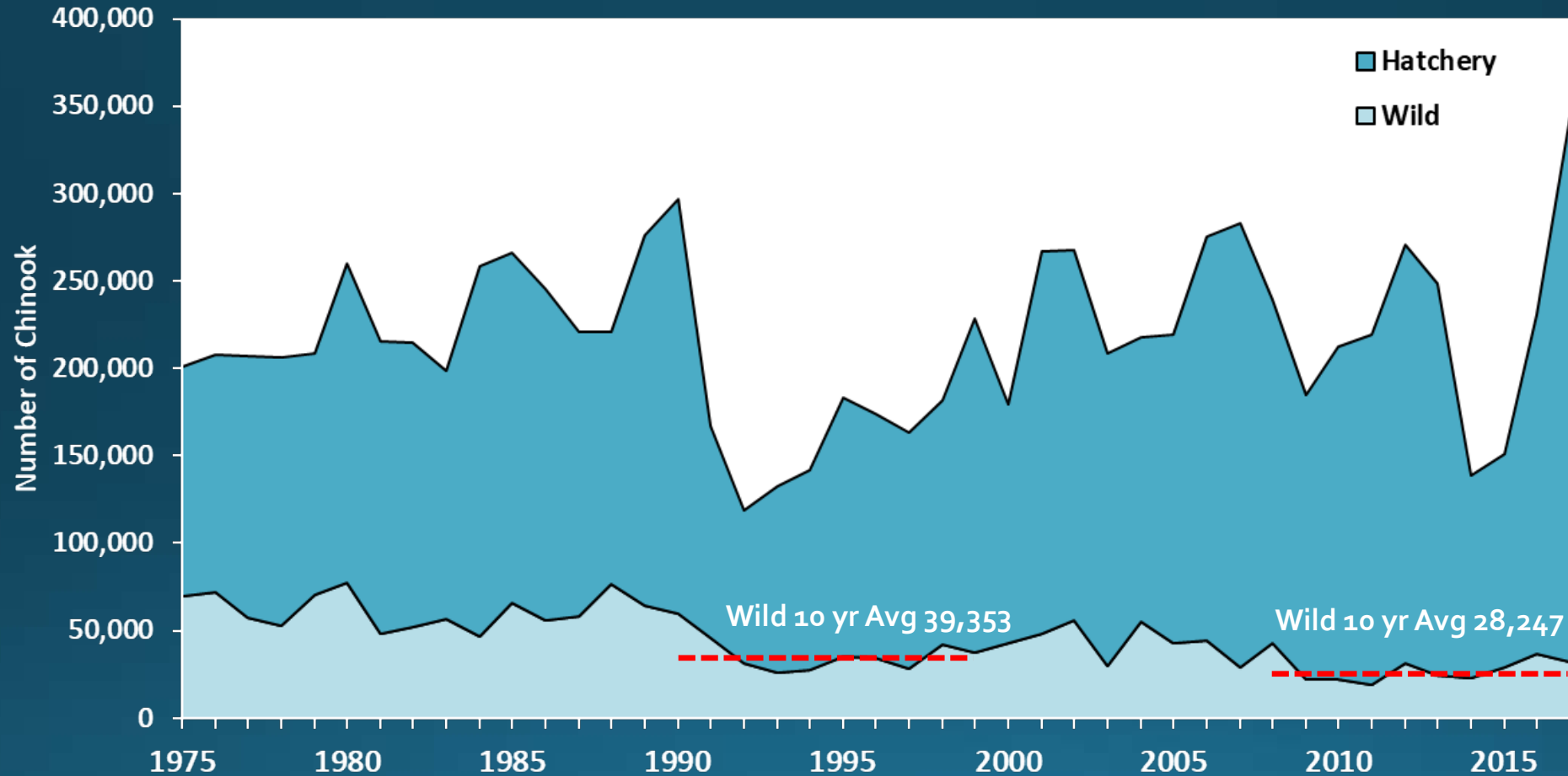


Columbia River Salmon and Steelhead Returns

Fish Committee Materials - February 6, 2020

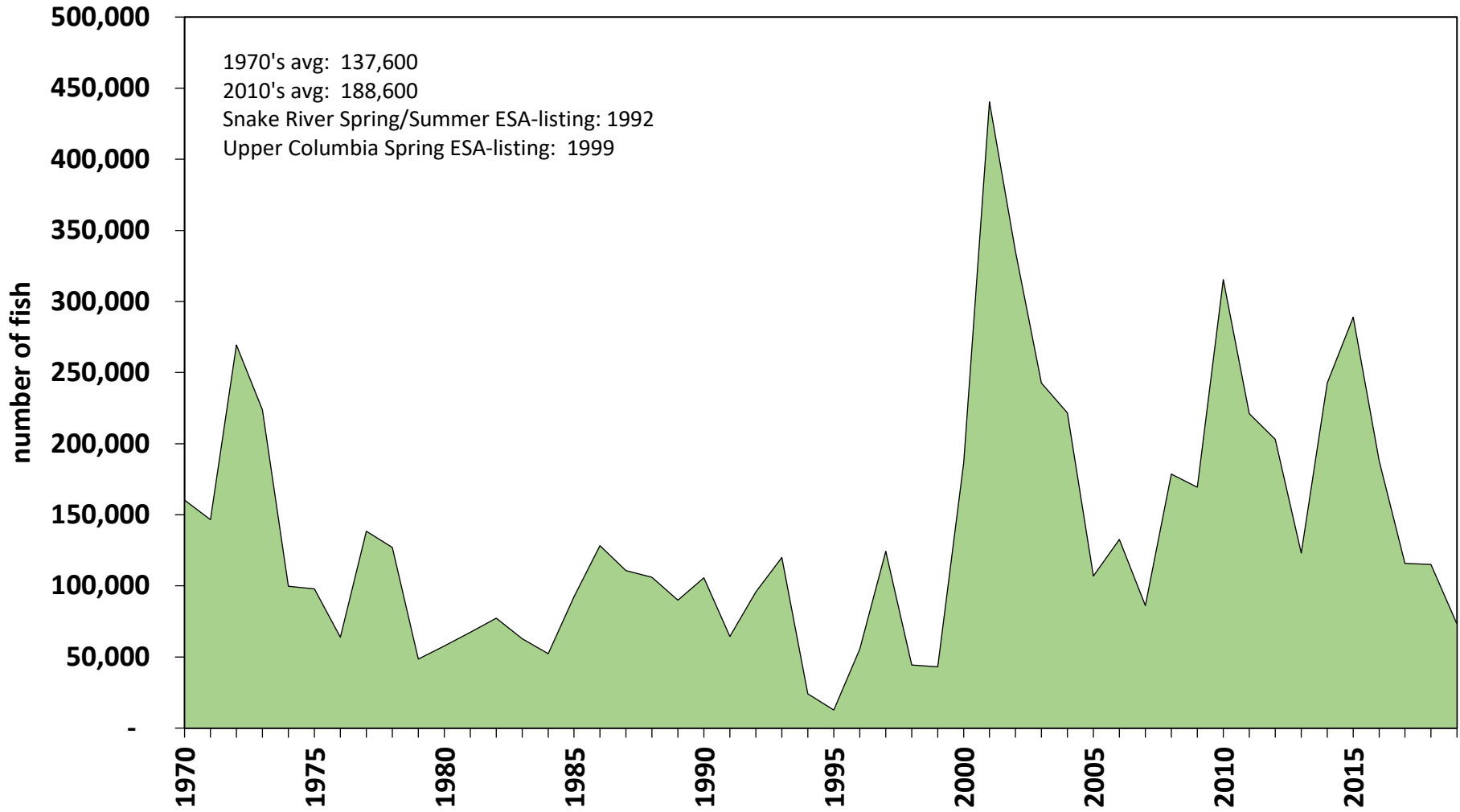


Chinook Historical Runsize – Puget Sound

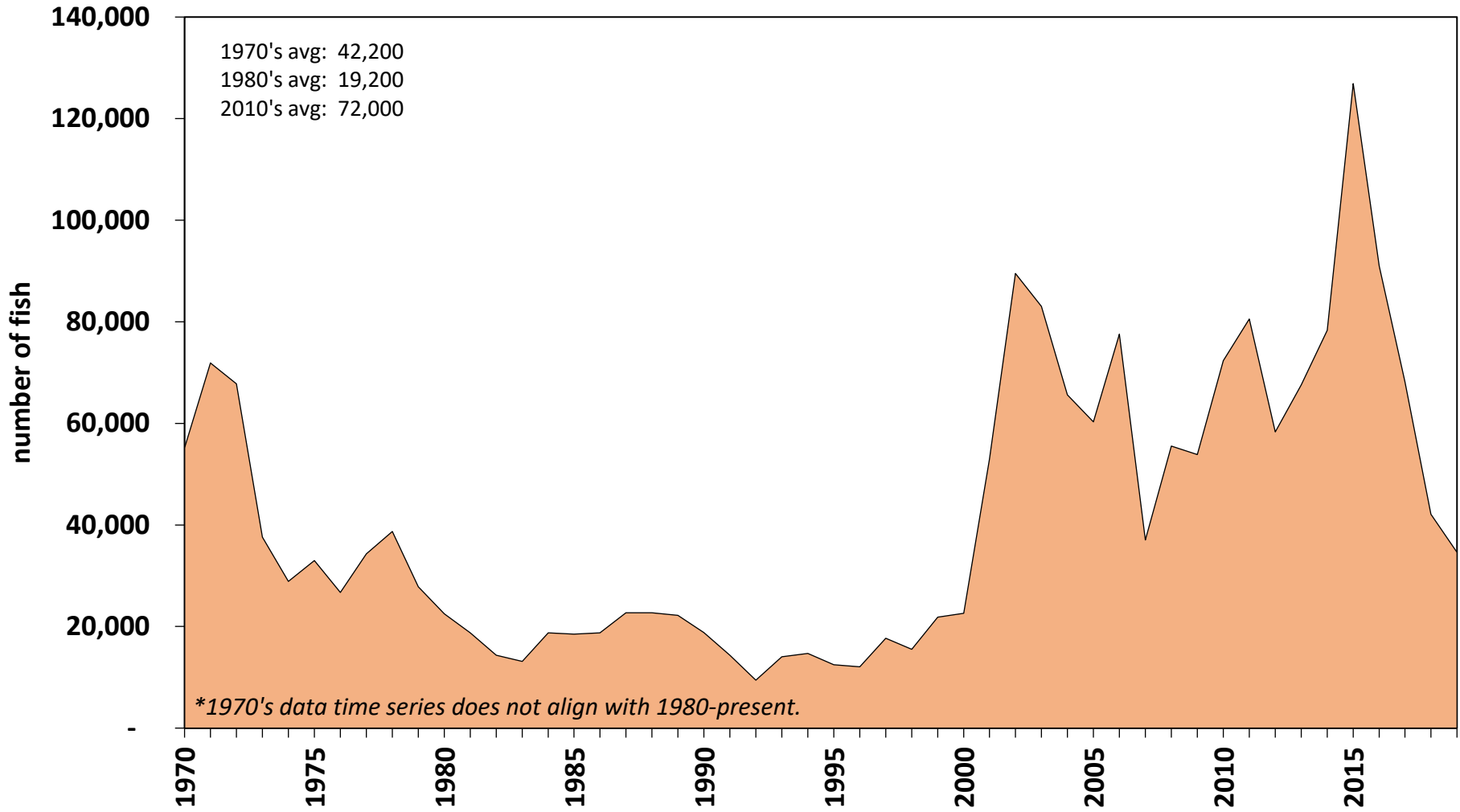


Wild Chinook ↓ ~28% since 10yr avg. prior to listing under ESA in 1999

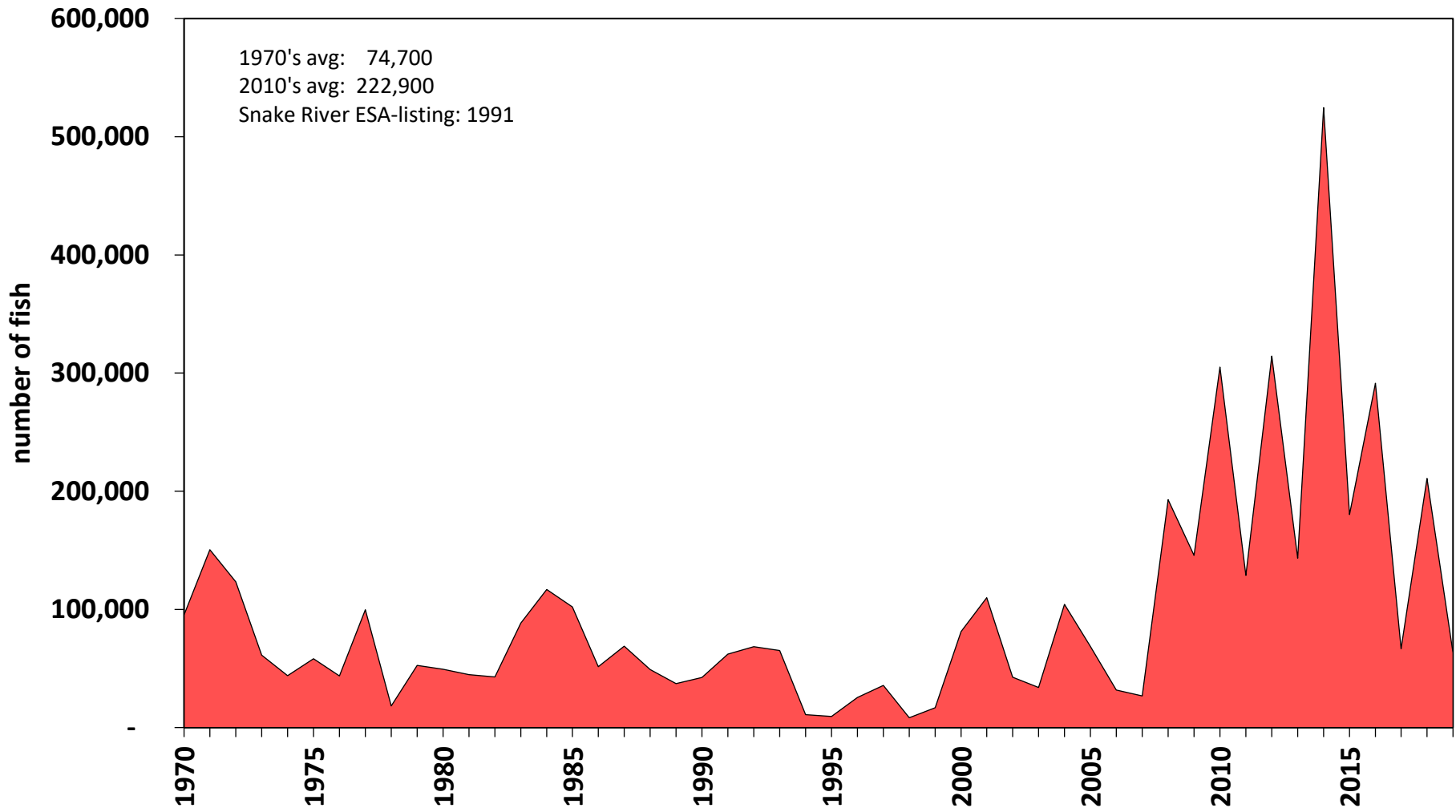
Columbia River Upriver Spring Chinook Returns



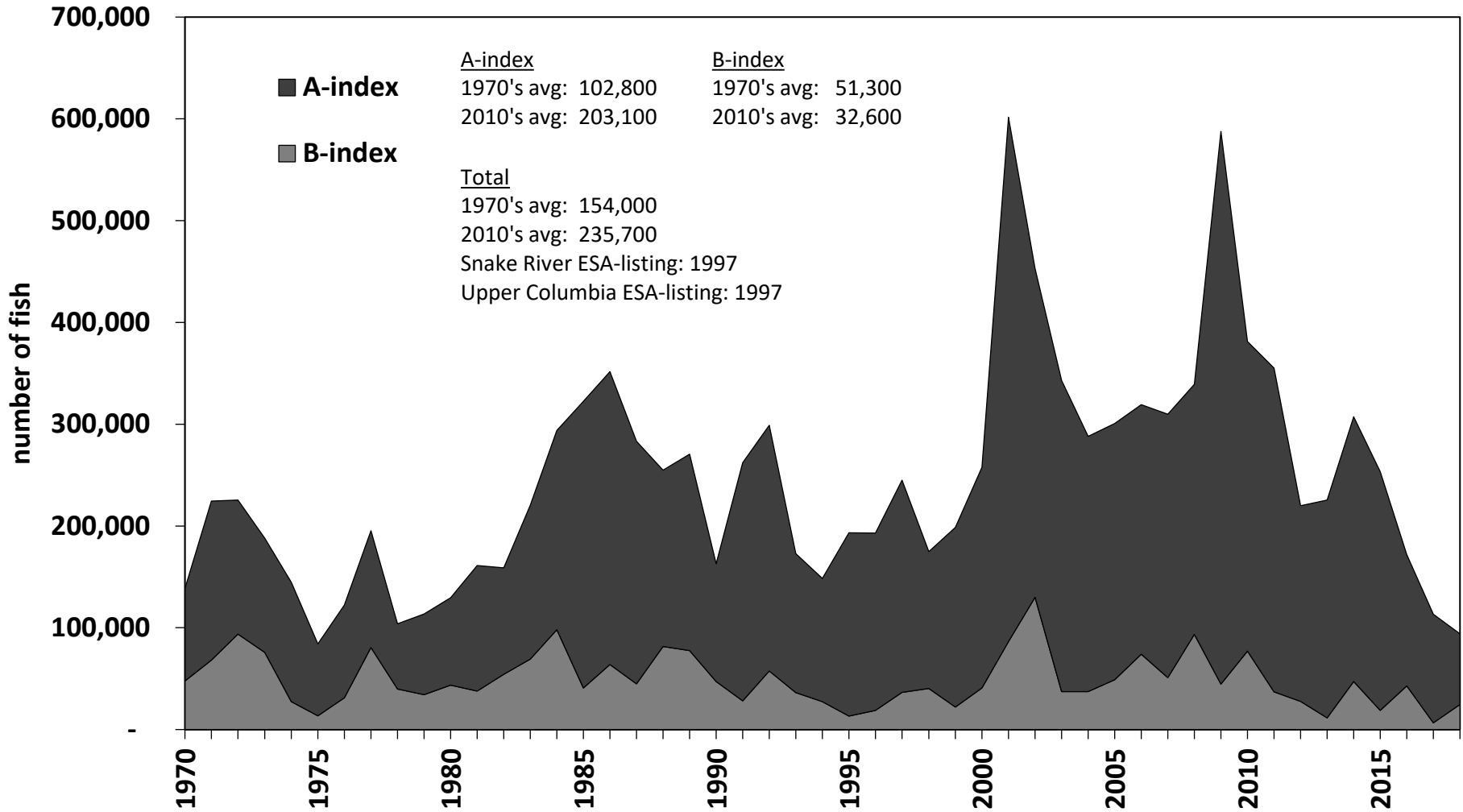
Upper Columbia River Summer Chinook Returns



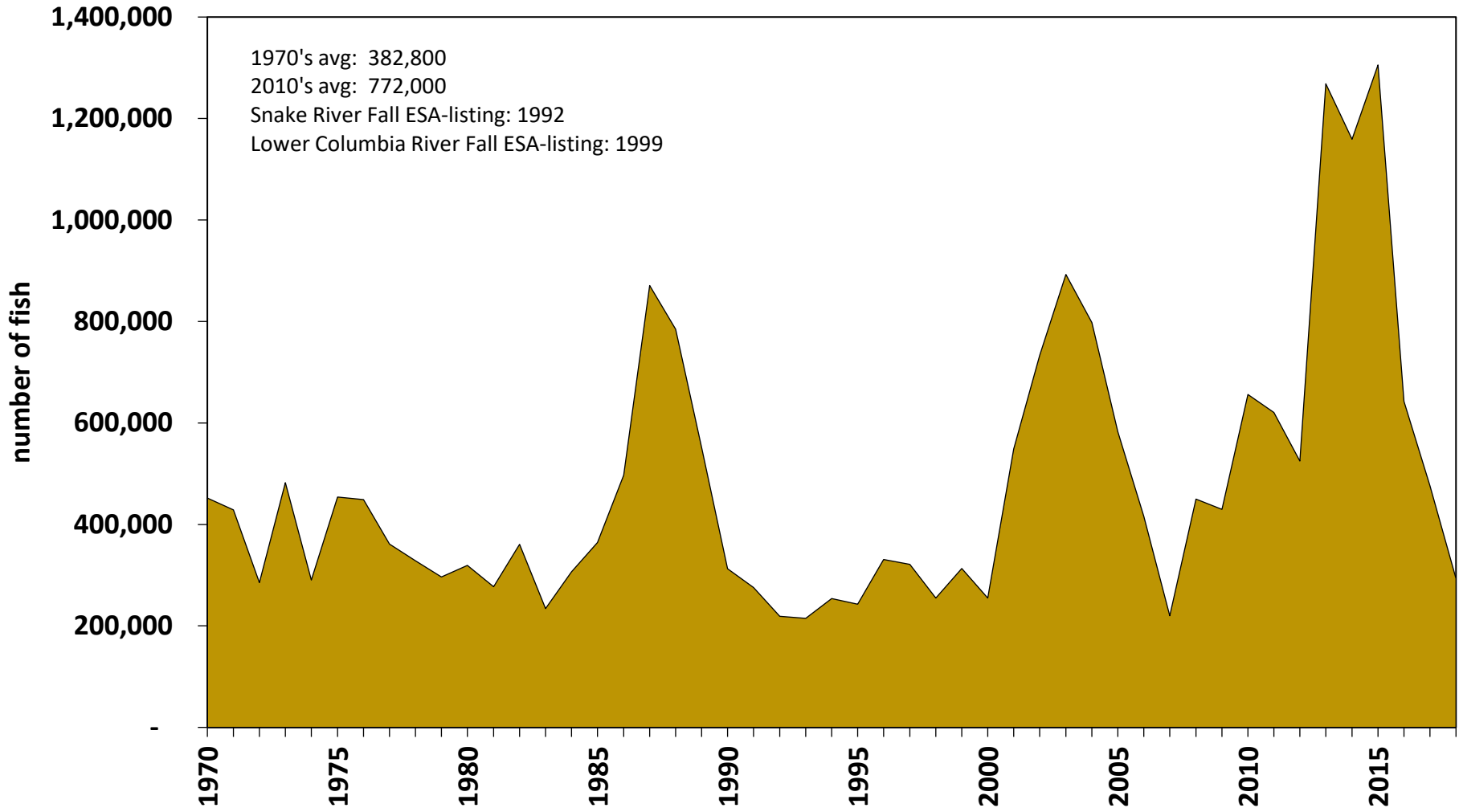
Columbia River Sockeye Returns



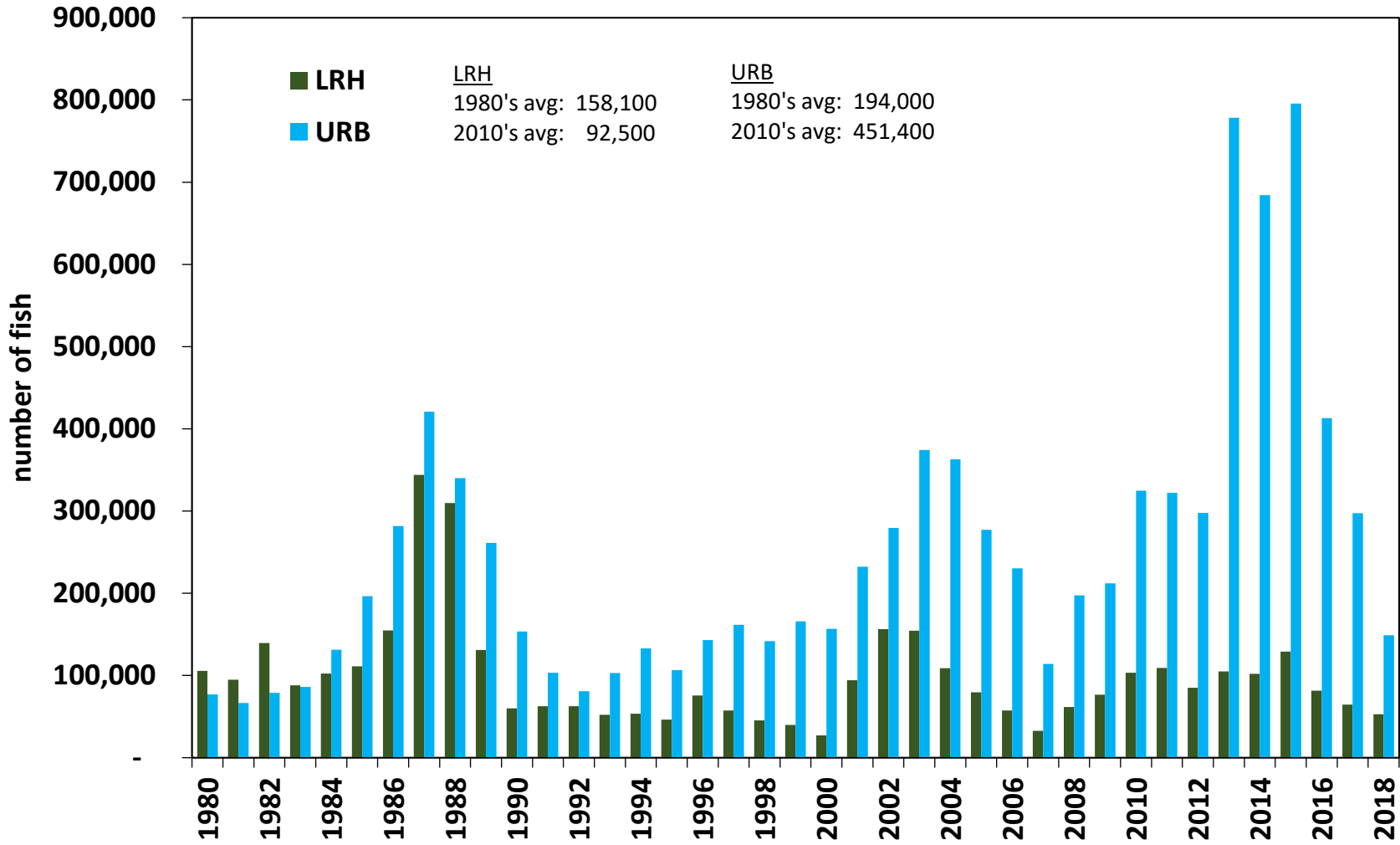
Columbia River Upriver Summer Steelhead Returns



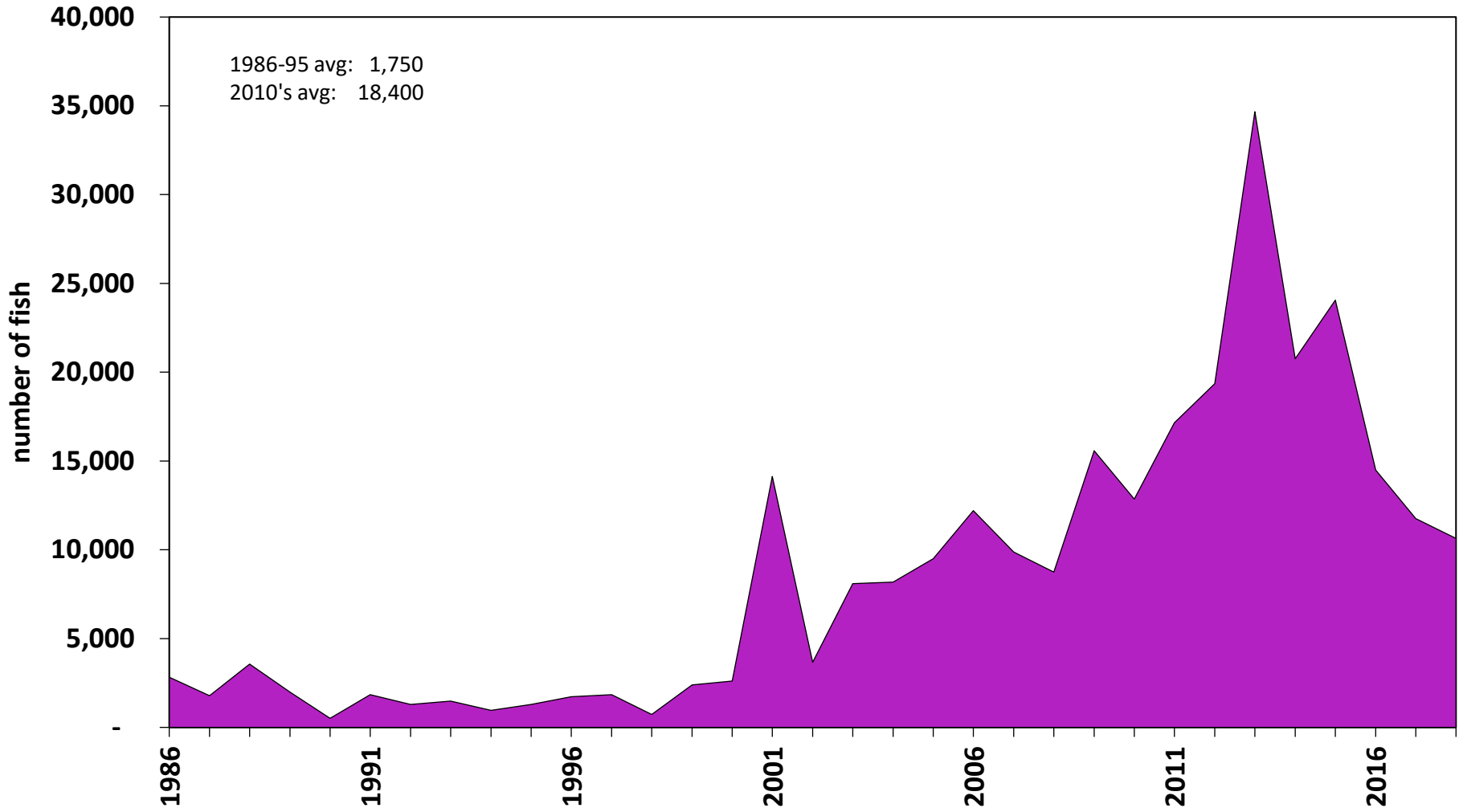
Columbia River Fall Chinook Returns



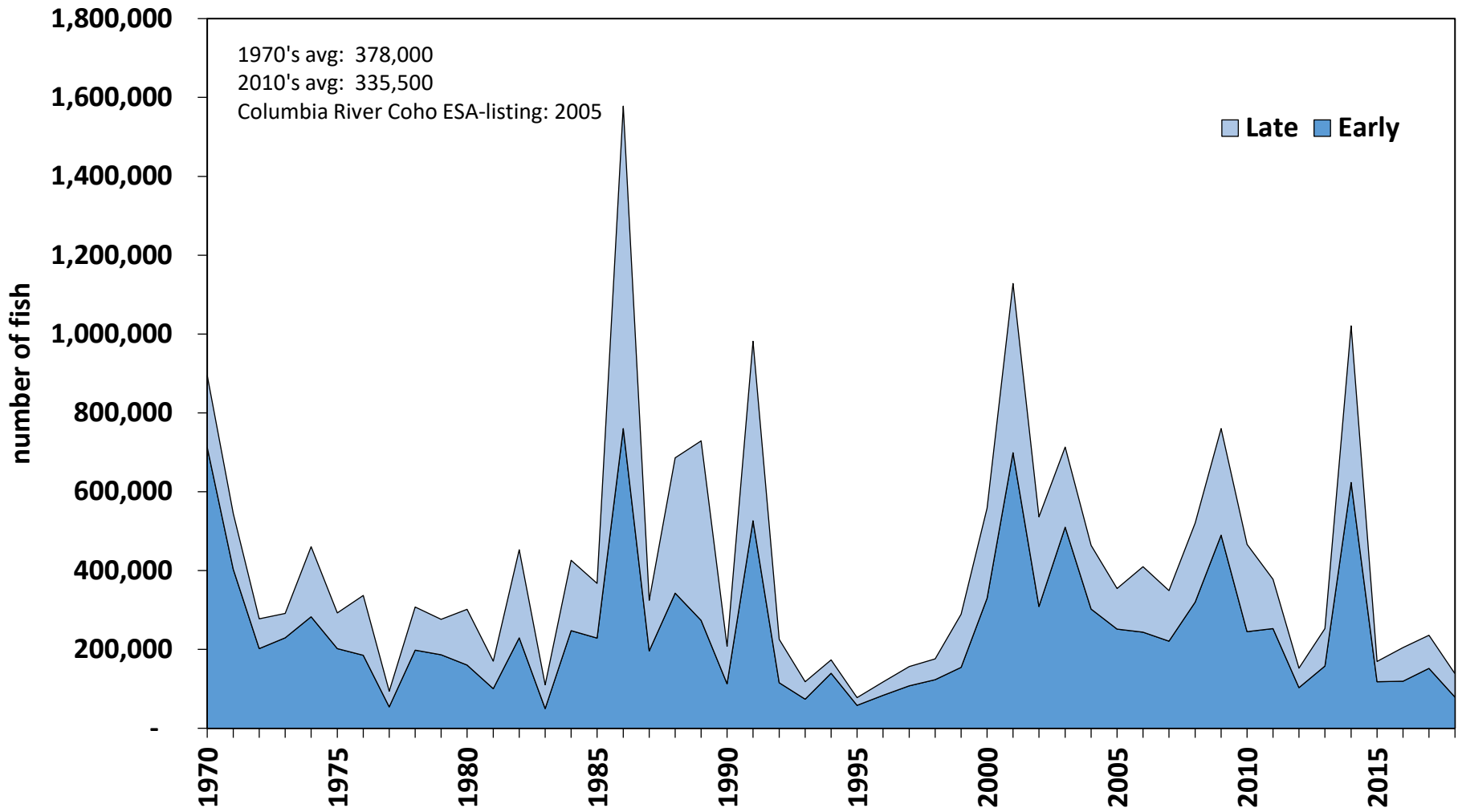
Columbia River Fall Chinook Specific Stock Returns



Columbia River Snake River Wild Chinook Returns



Columbia River Coho Returns



Columbia River mouth returns for salmon and steelhead.

Year	Upriver Spring	Summer Chinook	Fall Chinook	Sockeye	Coho	Steelhead
1970	160,300	55,200	452,000	95,400	895,273	138,500
1971	146,500	71,900	428,900	150,500	544,502	224,500
1972	269,500	67,800	285,500	123,300	277,840	225,500
1973	223,800	37,600	482,500	61,300	291,260	187,900
1974	99,800	28,900	290,500	43,800	460,810	144,800
1975	98,000	33,000	453,900	58,200	292,484	84,100
1976	63,900	26,700	448,700	43,700	336,957	122,400
1977	138,400	34,300	361,300	99,800	93,832	195,400
1978	127,000	38,700	328,400	18,400	307,499	103,800
1979	48,600	27,800	296,400	52,600	276,480	113,500
1980	57,692	22,498	319,300	49,387	301,593	129,600
1981	67,401	18,746	277,200	44,712	170,246	161,100
1982	77,246	14,369	361,000	42,808	453,122	158,800
1983	62,912	13,145	234,300	88,331	109,962	220,500
1984	52,357	18,765	306,400	116,913	425,903	293,762
1985	92,284	18,522	364,300	102,103	367,212	322,374
1986	128,314	18,752	496,900	51,590	1,578,053	351,524
1987	110,772	22,715	871,000	68,834	324,200	283,242
1988	106,003	22,720	784,700	49,063	686,140	254,794
1989	90,031	22,201	551,900	37,140	728,685	270,683
1990	105,715	18,794	312,800	42,436	207,983	162,802
1991	64,479	14,323	275,600	62,152	981,482	262,313
1992	95,691	9,428	219,000	68,483	225,435	298,962
1993	119,963	14,021	214,900	65,157	117,936	172,870
1994	24,095	14,691	254,000	10,828	173,391	148,434
1995	12,792	12,455	242,800	9,305	77,388	193,258
1996	55,552	12,080	330,700	25,403	117,122	193,157
1997	124,321	17,709	321,500	35,640	156,372	244,872
1998	44,308	15,536	255,000	8,337	175,893	174,928
1999	43,067	21,867	313,000	16,666	289,059	198,603
2000	186,715	22,595	255,000	81,234	558,335	257,632
2001	440,336	52,960	548,800	109,888	1,128,344	601,505
2002	335,214	89,524	733,300	42,615	535,840	453,006
2003	242,605	83,058	892,900	33,874	713,214	343,023
2004	221,675	65,623	797,700	104,229	463,544	288,013
2005	106,900	60,272	582,600	68,676	354,717	300,599
2006	132,583	77,573	415,800	31,824	409,692	319,296
2007	86,247	37,035	220,200	26,696	349,022	309,921
2008	178,629	55,532	449,700	192,746	520,764	339,252
2009	169,296	53,881	429,700	145,729	760,161	587,735
2010	315,345	72,346	655,900	305,154	466,530	381,148
2011	221,158	80,574	620,700	128,813	378,050	355,121
2012	203,090	58,300	525,100	314,369	152,376	219,857
2013	123,136	67,603	1,268,600	143,373	252,764	225,585
2014	242,635	78,304	1,159,200	524,658	1,020,520	307,187
2015	288,994	126,900	1,305,600	180,165	169,580	253,230
2016	187,816	91,000	642,500	291,348	204,947	171,806
2017	115,821	68,204	476,500	66,599	235,656	113,350
2018	115,081	42,120	293,400	210,915	138,400	94,000
2019	73,101	34,619	na	63,222	na	na

**Summer chinook 1970's data time series does not align with 1980-present.*

Columbia River mouth returns for salmon and steelhead.

Year	Fall Chinook stocks			Coho stocks		Steelhead stocks	
	LRH	URB	SRW	Early	Late	A-index	B-index
1970				712,745	182,528	90,700	47,800
1971				403,446	141,056	156,400	68,100
1972				202,296	75,544	131,600	93,900
1973				229,281	61,979	112,200	75,700
1974				282,547	178,263	117,400	27,400
1975				202,101	90,383	70,500	13,600
1976				185,264	151,693	91,100	31,300
1977				54,167	39,665	114,700	80,700
1978				198,448	109,051	63,900	39,900
1979				186,211	90,269	79,300	34,200
1980	105,600	76,800		160,300	141,293	85,900	43,700
1981	94,900	66,600		100,222	70,024	123,400	37,700
1982	139,500	79,000		229,442	223,680	104,500	54,300
1983	88,100	86,100		49,933	60,029	151,200	69,300
1984	102,400	131,400		247,937	177,966	195,751	98,011
1985	111,000	196,400		228,621	138,591	281,504	40,870
1986	154,800	281,600	2,830	760,027	818,026	287,508	64,016
1987	344,000	420,700	1,783	196,119	128,080	238,283	44,959
1988	309,900	339,900	3,558	343,017	343,123	173,151	81,643
1989	130,900	261,300	1,981	273,704	454,981	193,079	77,604
1990	60,000	153,600	508	112,774	95,208	115,628	47,174
1991	62,700	103,300	1,846	526,281	455,201	234,048	28,265
1992	62,600	81,000	1,289	115,253	110,183	241,524	57,438
1993	52,300	102,900	1,475	73,660	44,276	136,701	36,169
1994	53,600	132,800	958	139,581	33,810	120,971	27,463
1995	46,300	106,500	1,296	58,411	18,978	180,037	13,221
1996	75,500	143,100	1,729	83,641	33,480	174,464	18,693
1997	57,400	161,700	1,839	107,349	49,023	208,209	36,663
1998	45,300	141,600	730	123,230	52,662	134,687	40,241
1999	39,900	165,900	2,395	154,361	134,698	176,466	22,137
2000	27,000	156,600	2,612	329,962	228,373	216,723	40,909
2001	94,300	232,400	14,133	699,266	429,078	515,079	86,426
2002	156,400	279,500	3,665	308,970	226,870	323,124	129,882
2003	154,500	374,200	8,093	510,187	203,027	305,795	37,228
2004	109,000	362,800	8,174	302,311	161,233	250,615	37,398
2005	79,400	277,200	9,500	251,670	103,047	251,631	48,968
2006	57,300	230,400	12,202	243,761	165,931	245,168	74,128
2007	32,700	114,000	9,878	220,644	128,379	258,848	51,073
2008	61,600	197,300	8,738	319,848	200,916	245,823	93,429
2009	76,600	212,100	15,576	489,761	270,400	543,195	44,540
2010	103,300	324,900	12,855	244,936	221,594	304,002	77,146
2011	109,100	322,100	17,156	253,112	124,938	318,125	36,996
2012	85,000	297,800	19,360	102,846	49,530	192,134	27,723
2013	104,800	778,300	34,669	157,898	94,866	214,074	11,511
2014	101,900	684,200	20,752	623,366	397,154	260,130	47,057
2015	128,900	795,700	24,054	117,804	51,776	234,382	18,848
2016	81,500	412,900	14,493	119,629	85,318	128,890	42,916
2017	64,600	297,400	11,750	151,637	84,019	106,776	6,574
2018	53,000	149,000	10,642	78,900	59,500	69,338	24,662
2019	na	na	na	na	na	na	na

*Fall Chinook, coho, and steelhead 2019 returns unavailable at this time.