

2015/16 - LANDS 20/20 Region 1 Lake Creek

Conservation Values

- **Critical habitat for sage grouse and sharp-tailed grouse**
- Over 90% shrub-steppe habitat and also includes wet meadows, aspen and open water
- **Mule deer and white tailed jackrabbit habitat connectivity areas**
- Provides connectivity to public lands
- Potential pygmy rabbit reintroduction site

Recreation Values

- Deer and upland bird hunting
- Fishing
- Wildlife viewing

Partners/Supporters

- Inland Northwest Land Conservancy, Spokane Audubon, Mule Deer Foundation, BLM, Pheasants Forever, Ducks Unlimited

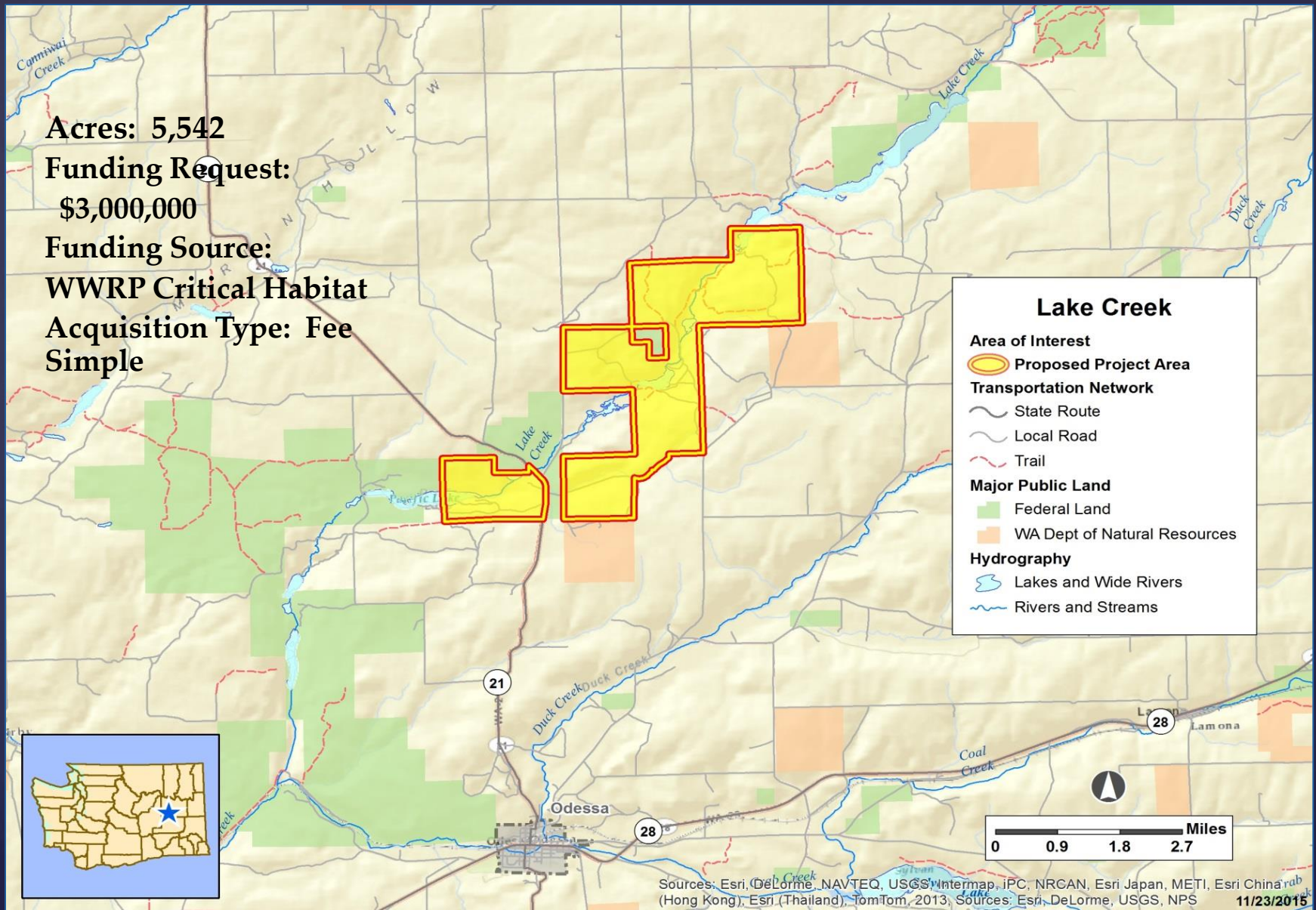
2015/16 - LANDS 20/20 Region 1 Lake Creek

Acres: 5,542

**Funding Request:
\$3,000,000**

**Funding Source:
WWRP Critical Habitat**

**Acquisition Type: Fee
Simple**



Sources: Esri, DeLorme, NAVTEQ, USGS, Intermap, iPC, NRCAN, Esri Japan, METI, Esri China (Hong Kong), Esri (Thailand), TomTom, 2013, Sources: Esri, DeLorme, USGS, NPS
11/23/2015