

**WACs 220-410-050, 220-410-060,
220-413-180, and 220-415-040**

Hunting Boundaries and Equipment

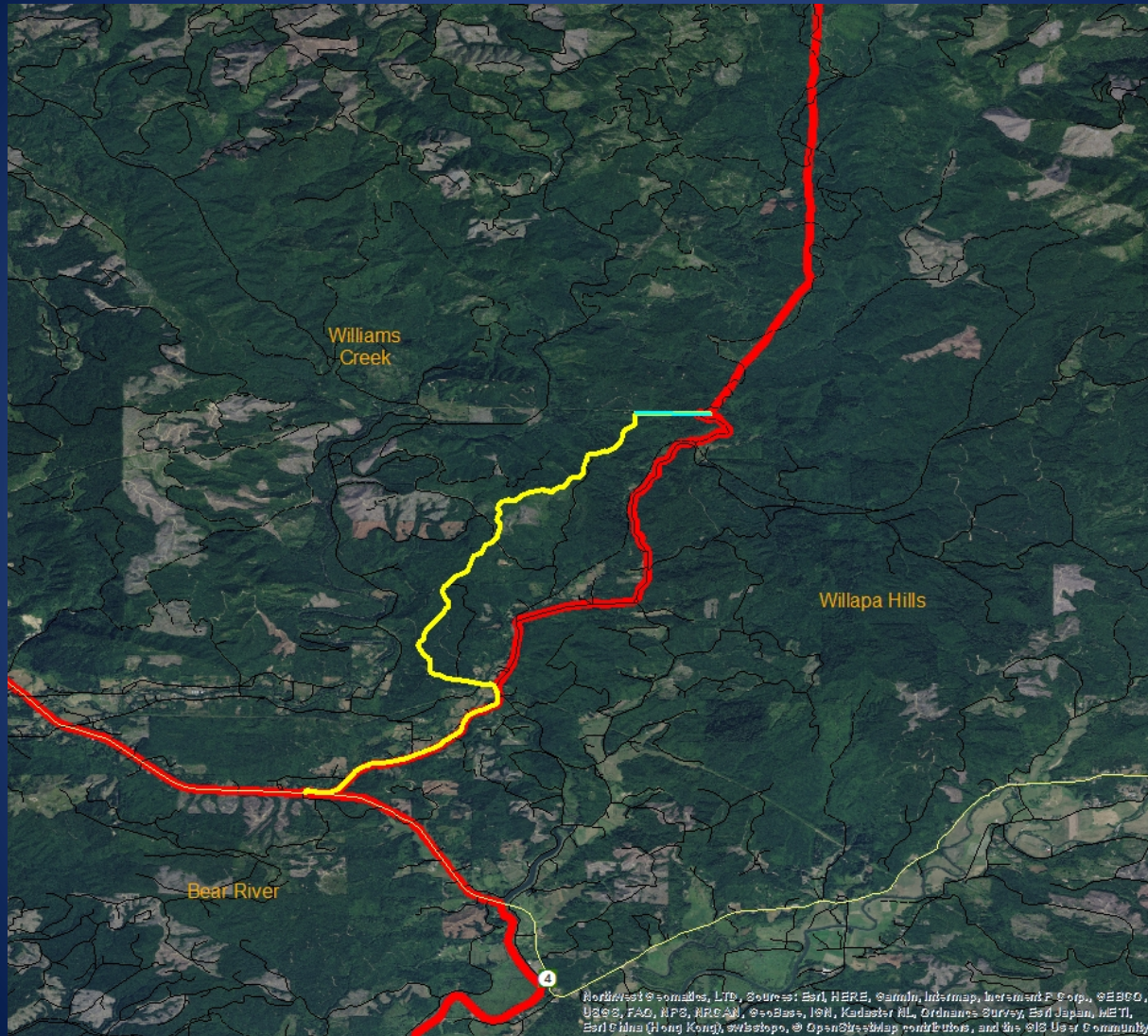


**Brock Hoenes
Ungulate Section Manager, Game Division
Wildlife Program**

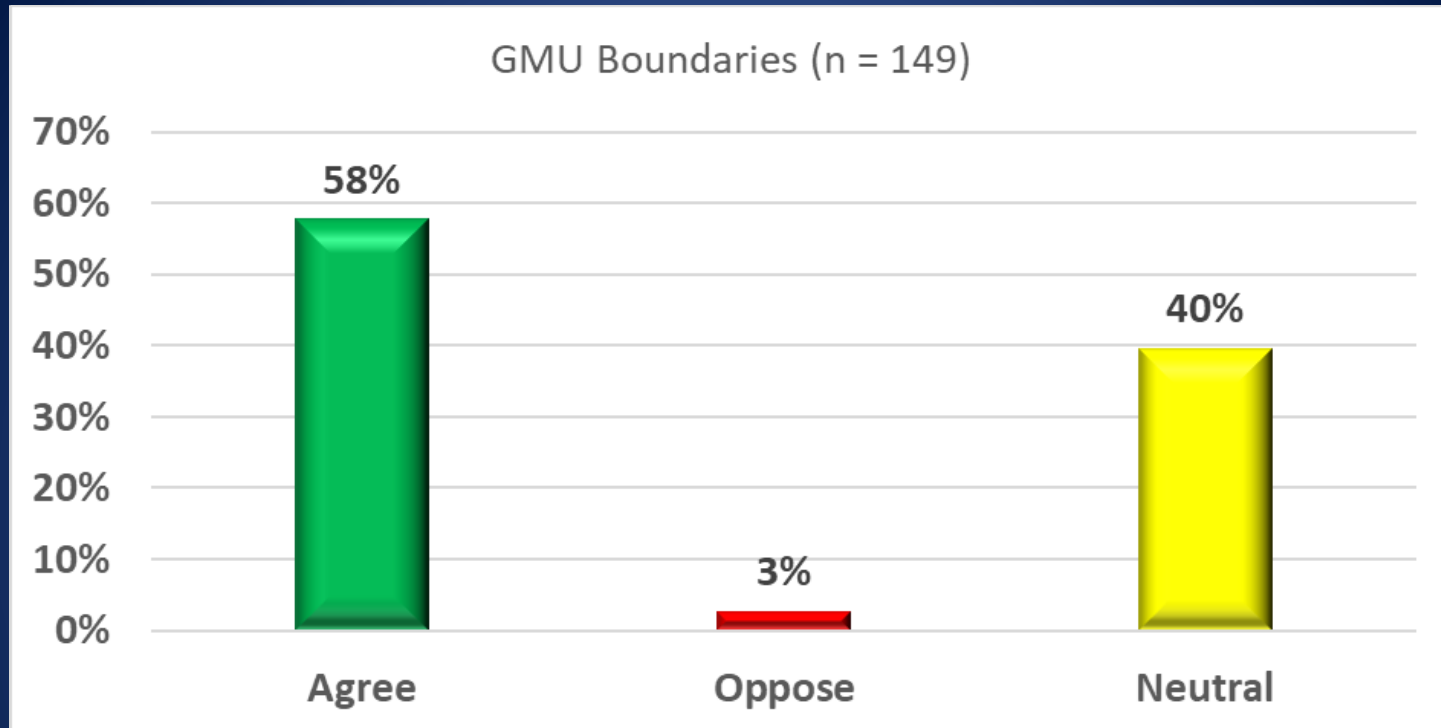
GMU Boundary Descriptions – Region 5 WAC 220-410-050 Region 6 WAC 220-410-060

- Propose adjusting GMU 673 (Williams Creek) boundary to align with Weyco 5800 line instead of Weyco 5000 line (Deep River main line).
- Proposed adjustment would align the boundary with a road that is more representative of a boundary proposed by local staff in the early 2000s.
- Necessitates changes to boundary language for neighboring GMU 506 (Willapa Hills).

GMU 673



Public Comment



- None of the comments received were directly related to the proposal.

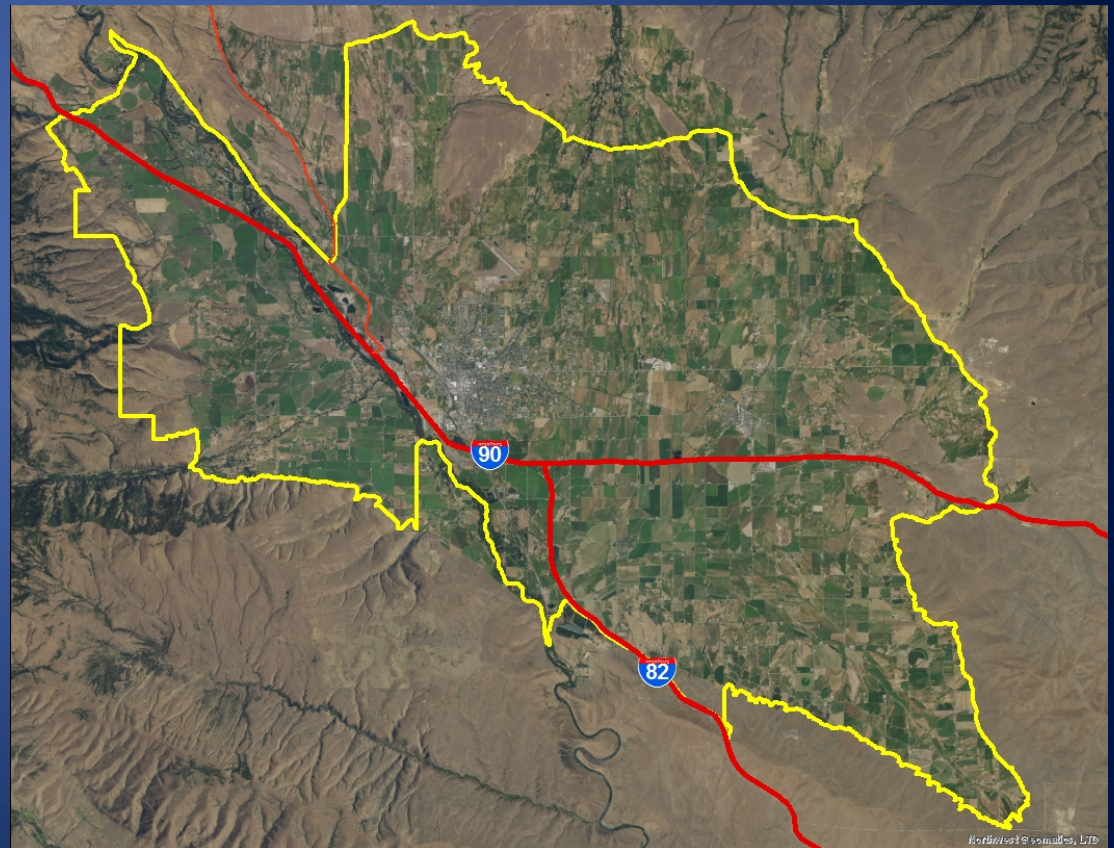
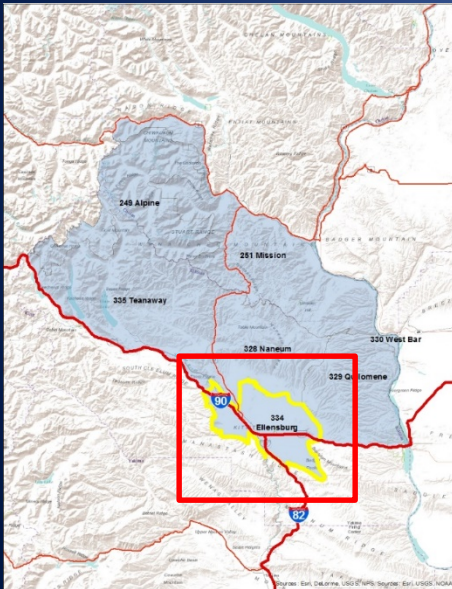
Special Closures and Firearm Restriction Areas

WAC 220-413-180

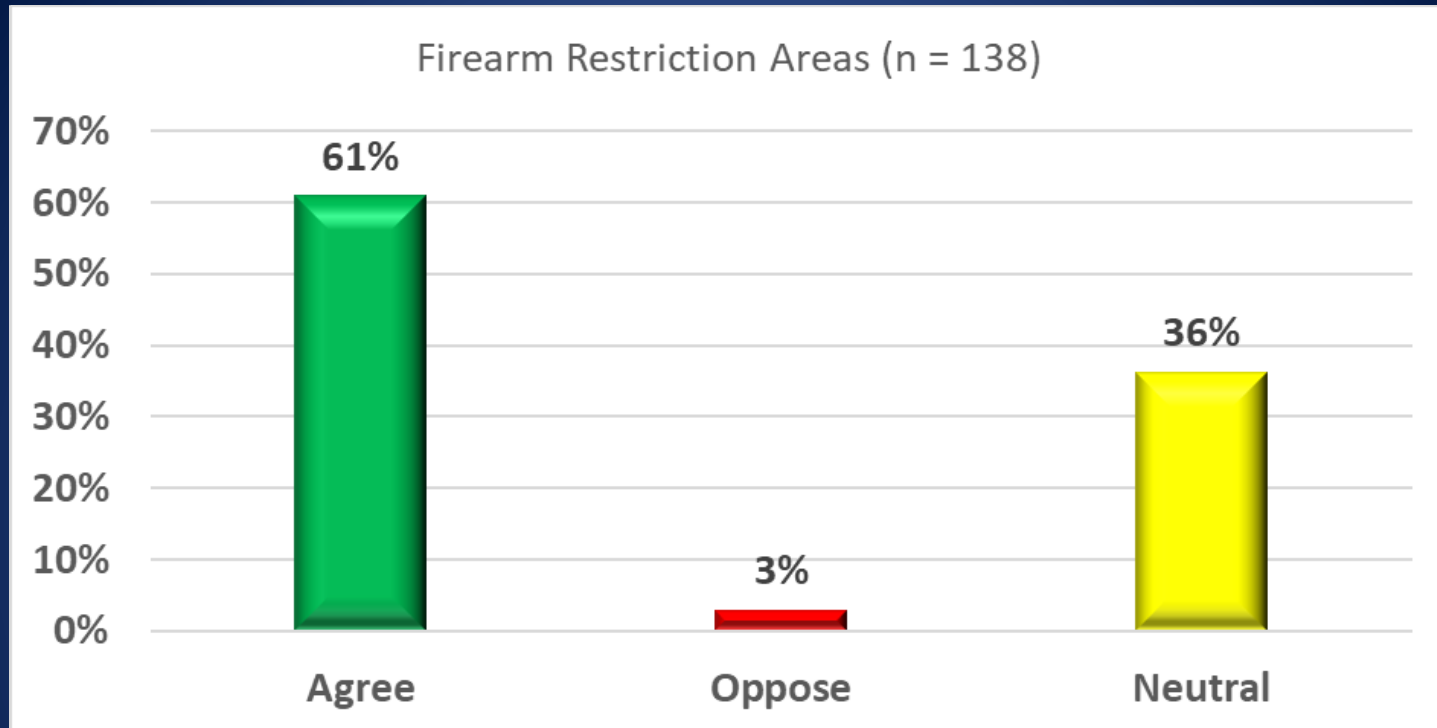
- Remove reference to the “wooden towers” for the Columbia River Restricted Hunting Area boundary description.
 - The wooden towers referenced in this boundary description were torn down in November, but the powerlines referenced still remain.
- Administrative change to correct the spelling of Newberry (currently Newbury) Hill Road to avoid confusion for hunters.

Recommended Adjustment

- Delete Kittitas County and associated reference to GMU 334 from the list of Firearm Restriction Areas



Public Comment



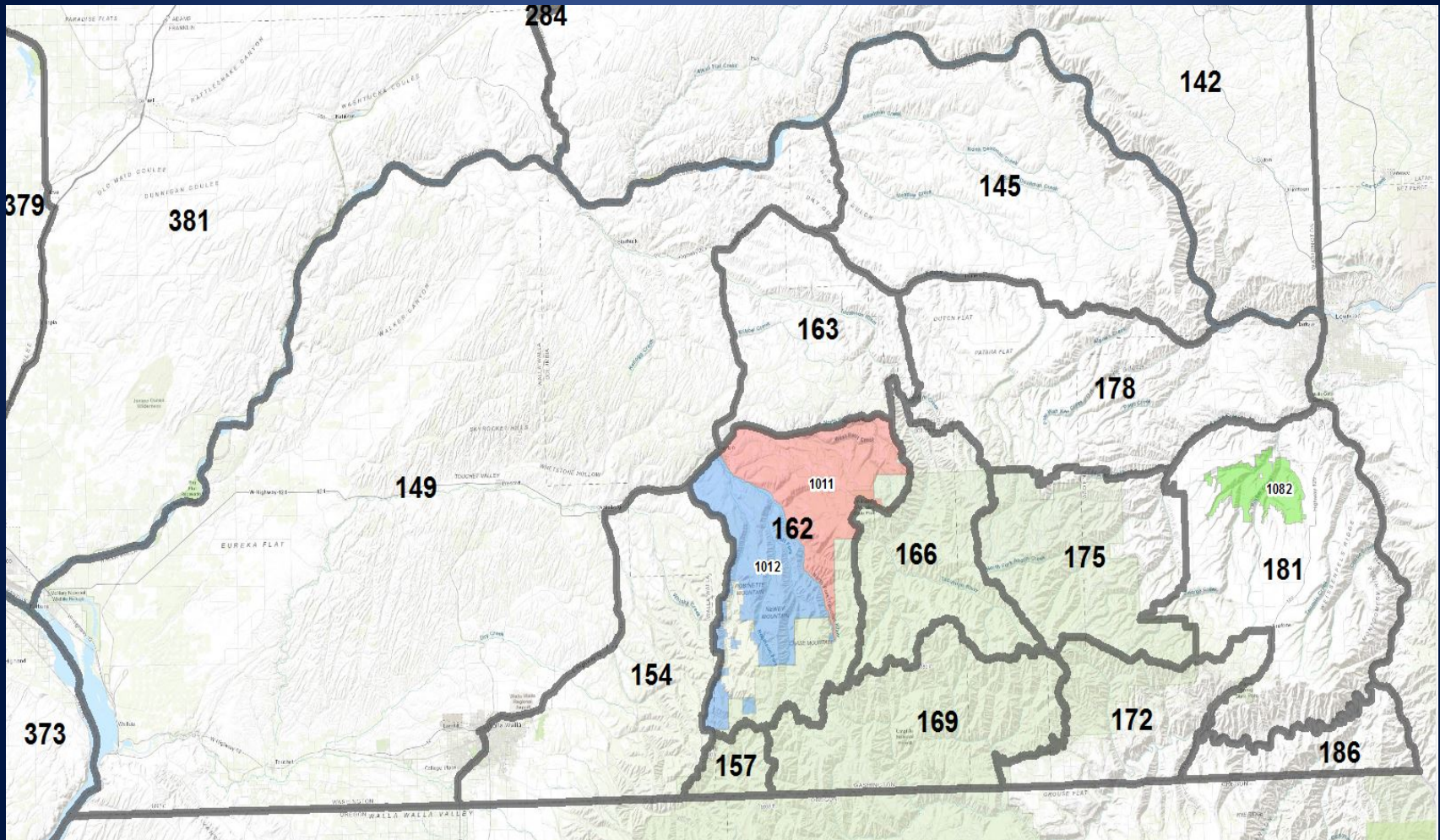
- One comment felt the language used should read “the Hanford Town Site”.
- One comment advocated for marking the boundary.

Elk Area Descriptions

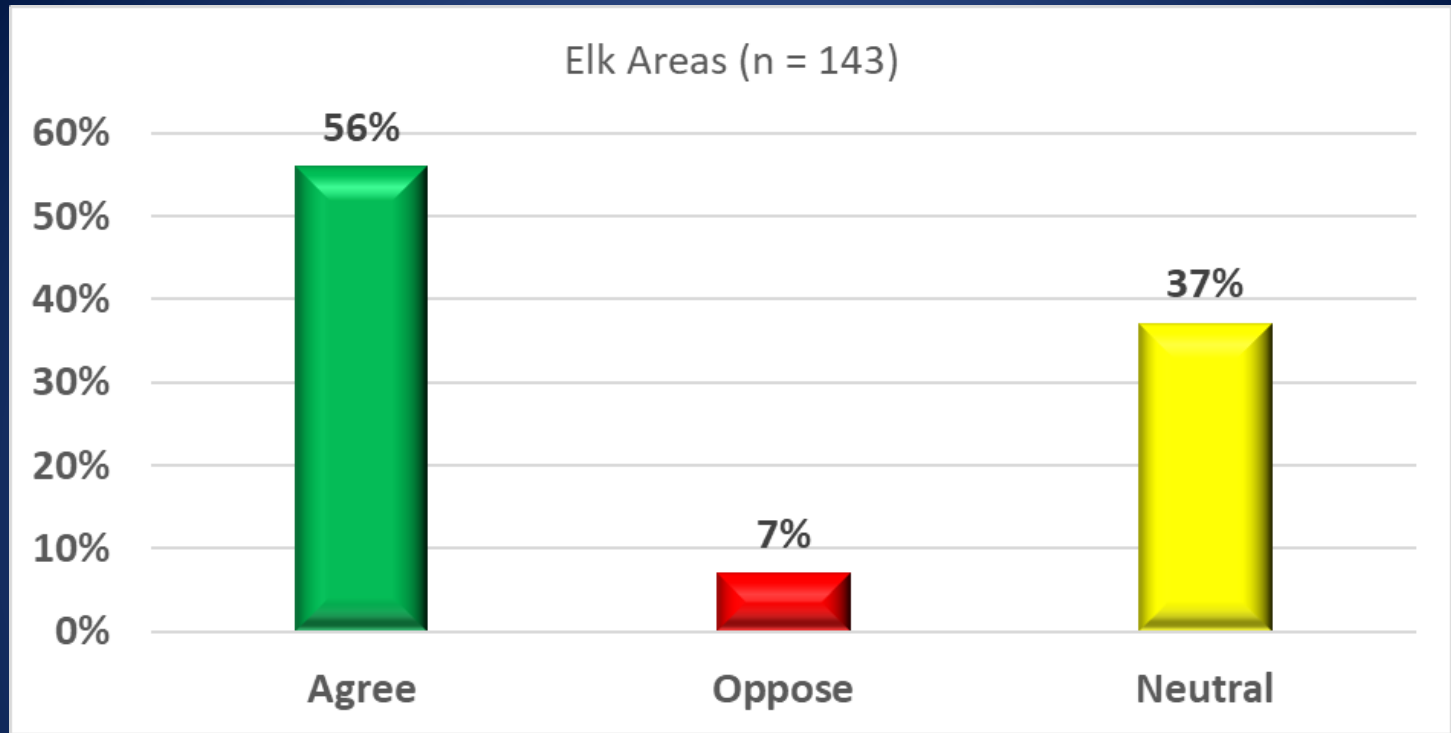
WAC 220-415-040

- Eliminate the following Elk Areas in the Blue Mountains.
 - No. 1011 (Columbia County)
 - No. 1012 (Columbia County)
 - No. 1082 (Asotin County)
- Elk numbers and damage complaints have declined substantially and the Elk Areas have not been used for many years.

Elk Areas 1011, 1012, 1082



Public Comment



- One comment supported the removal of these elk areas, while the other comment was opposed.

Questions?

