



WASHINGTON DEPARTMENT OF FISH AND WILDLIFE

NISQUALLY ACCESS ACCESS REDEVELOPMENT TN:A556:20-1

INDEX

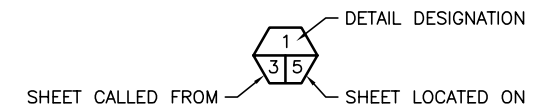
SHEET NO.

1. COVER SHEET
2. EXISTING SITE PLAN & VICINITY MAP
3. DEMOLITION PLAN
4. PROPOSED SITE PLAN
5. PAVING & STRIPING PLAN
6. PAVING & PARKING DETAILS
7. CXT VAULT TOILET PLAN & ELEVATIONS

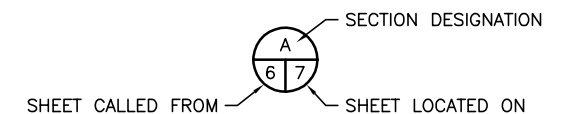
ABBREVIATIONS

ALUM	-	ALUMINUM
L	-	ANGLE
APPROX	-	APPROXIMATELY
BM	-	BENCH MARK
CL	-	CENTERLINE
CMP	-	CORRUGATED METAL PIPE
CLR	-	CLEARANCE
CONC	-	CONCRETE
CSBC	-	CRUSHED SURFACE BASE COURSE
CSTC	-	CRUSHED SURFACE TOP COURSE
DIA	-	DIAMETER
ELEV	-	ELEVATION
FB	-	FLAT BAR
FTG	-	FOOTING
GALV	-	GALVANIZED
ID	-	INSIDE DIAMETER
IE	-	INVERT ELEVATION
MFG	-	MANUFACTURER'S
MISC	-	MISCELLANEOUS
OC	-	ON CENTER
OD	-	OUTSIDE DIAMETER
OHWM	-	ORDINARY HIGH WATER MARK
PL	-	PLATE
REQ'D	-	REQUIRED
SEC	-	SECTION
SPEC'S	-	PROJECT SPECIFICATIONS
SS	-	STAINLESS STEEL
TYP	-	TYPICAL
WS	-	WATER SURFACE

SHEET SYMBOLS



DETAIL



SECTION

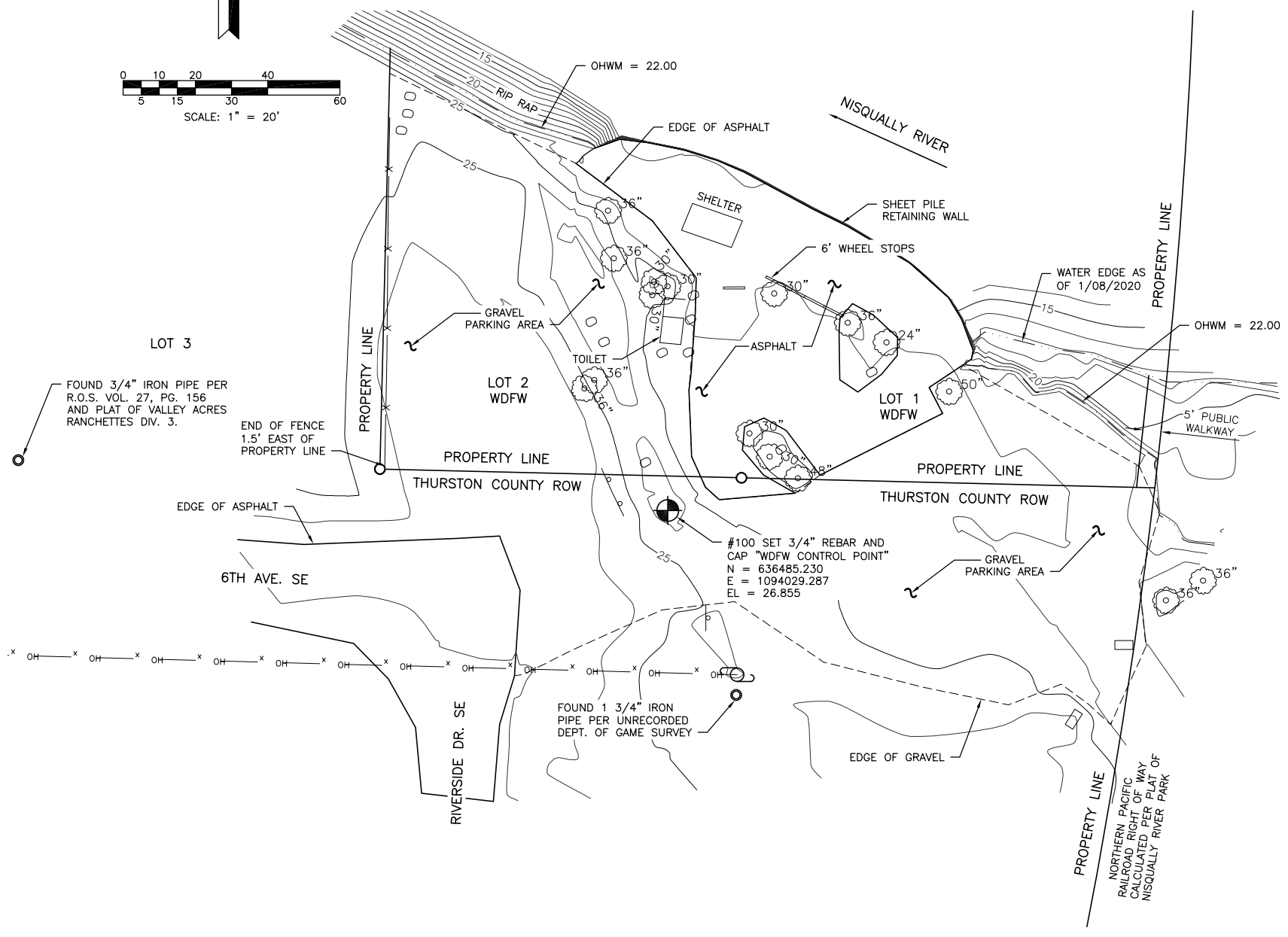
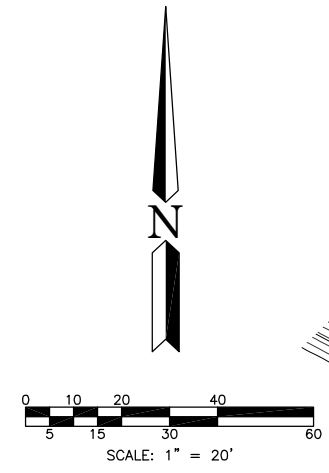


NOTE REFERENCE

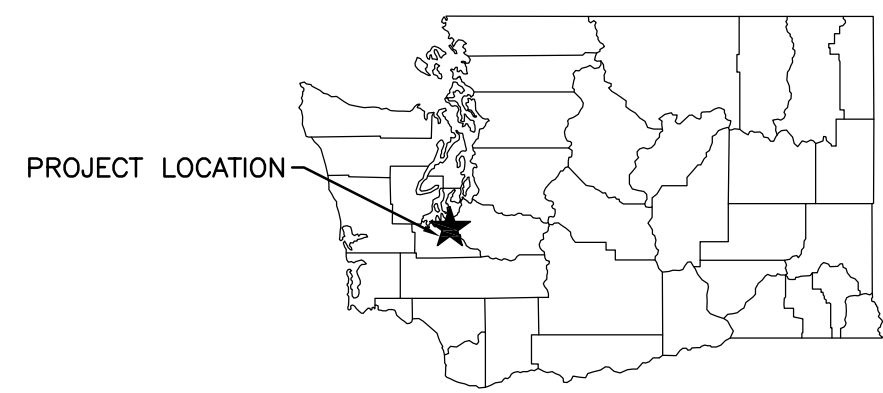
REFERENCE DESIGNATION TO A NOTE, A PART, OR MATERIAL IN A SCHEDULE/TABLE

NOT APPROVED
FOR CONSTRUCTION

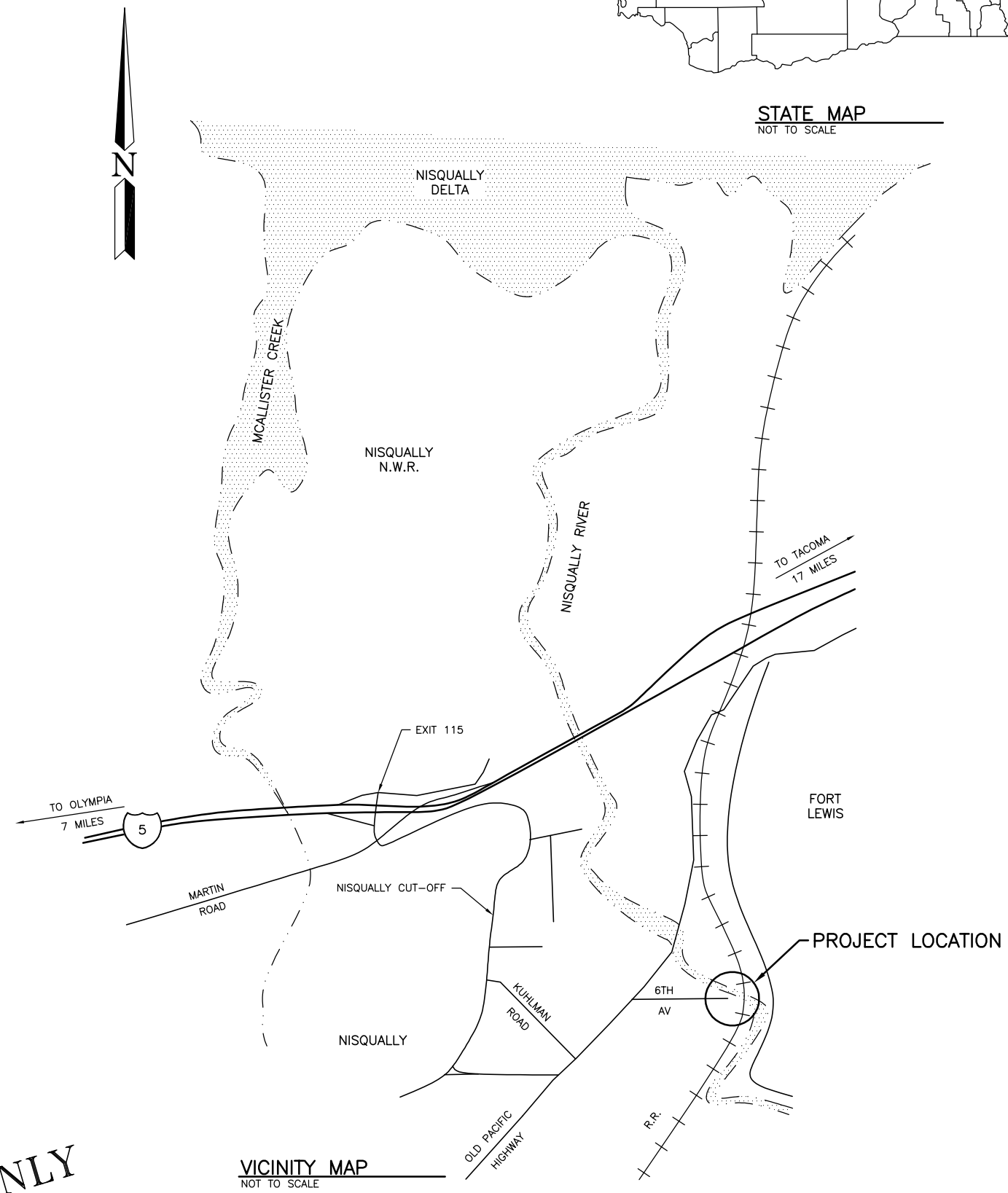
PROJECT NO. TN:A556:20-1	
SHEET 1	OF 7



EXISTING SITE PLAN
SCALE: 1" = 20'



STATE MAP
NOT TO SCALE



VICINITY MAP
NOT TO SCALE

NOT APPROVED FOR CONSTRUCTION. REVIEW ONLY

WASHINGTON DEPARTMENT OF
FISH & WILDLIFE

DATE	REVISION DESCRIPTION	BY
	APPROVED AND RELEASED FOR CONSTRUCTION	
CHIEF ENGINEER	DATE:	
PROGRAM	DATE:	

0 1"
BAR MEASURES
ONE INCH ON
24x36 DRAWINGS

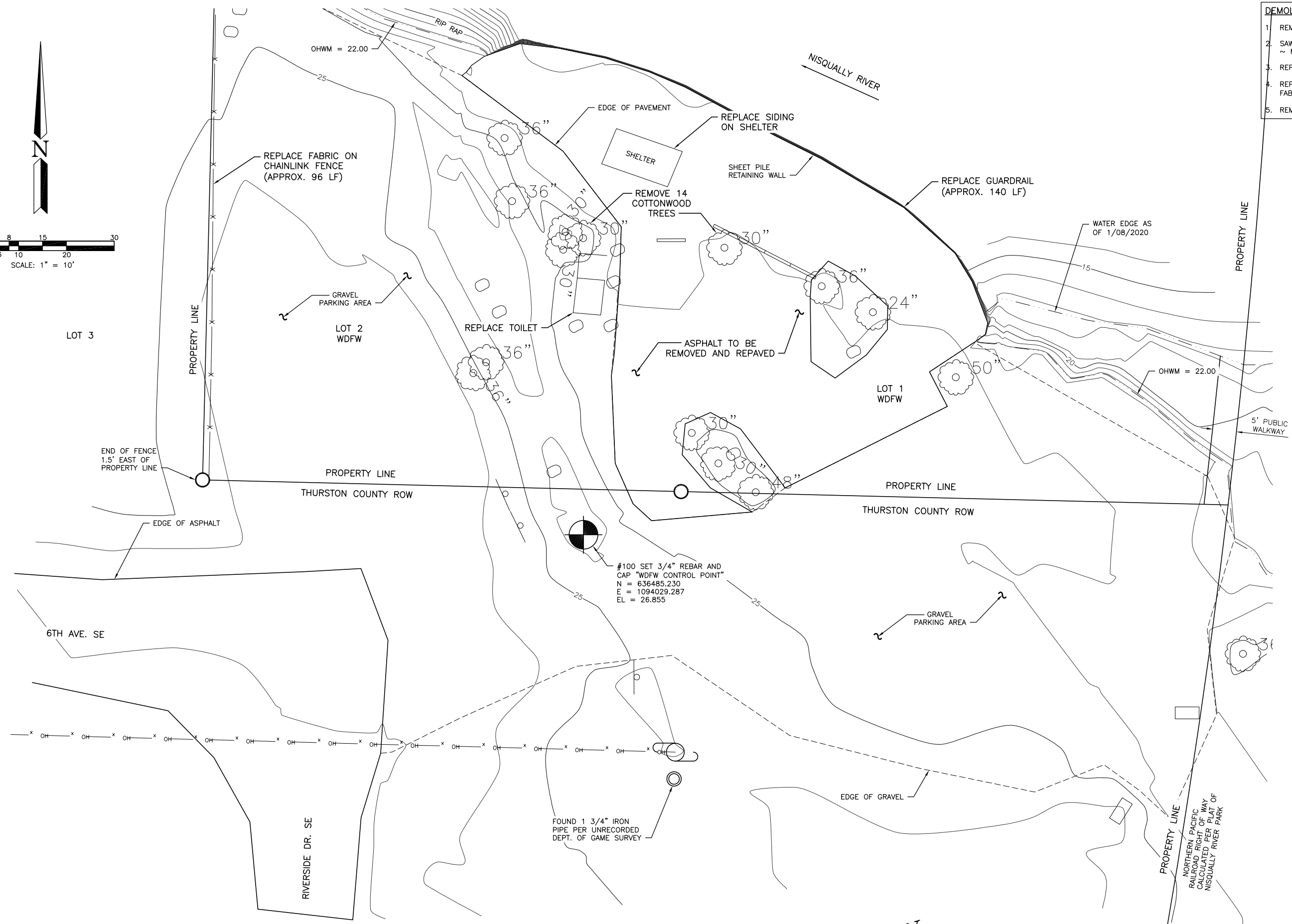
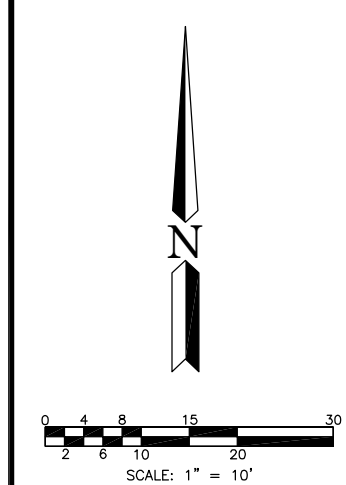
DESIGNED BY E. NICOLAI
CHECKED BY
DRAWN BY A. JOHNSON
DATE 3/2/2020

**NISQUALLY ACCESS
ACCESS REDEVELOPMENT
EXISTING SITE PLAN
& VICINITY MAP**

PROJECT NO.
TN:A556:20-1

SHEET	OF
2	7

- DEMOLITION NOTES:**
1. REMOVE ALL EXISTING ASPHALT AND GRUB SUB-GRADE.
 2. SAWCUT AND REMOVE EXISTING PAVEMENT ALONG TRANSITION EDGES ~ MINIMUM 5 FOOT WIDTH.
 3. REPLACE EXISTING VAULT TOILET WITH NEW CXT GUNNISON TOILET.
 4. REPLACE EXISTING FENCE FABRIC (96 FEET) AND INSTALL NEW FENCE FABRIC (96 FEET).
 5. REMOVE ALL COTTONWOOD TREES (14) ON WDFW PROPERTY.



DEMOLITION PLAN
SCALE: 1" = 10'

NOT APPROVED FOR CONSTRUCTION. REVIEW ONLY

DATE	REVISION DESCRIPTION	BY
	APPROVED AND RELEASED FOR CONSTRUCTION	
CHIEF ENGINEER	DATE:	
PROGRAM	DATE:	

WASHINGTON DEPARTMENT OF
FISH & WILDLIFE

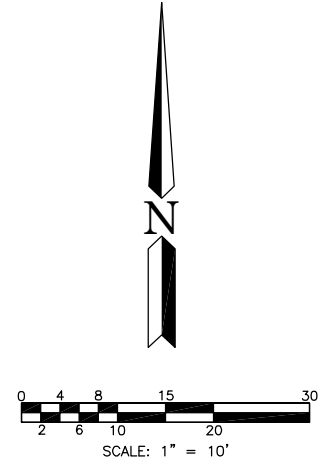
0 1" BAR MEASURES ONE INCH ON 24x36 DRAWINGS

DESIGNED BY E. NICOLAI
CHECKED BY
DRAWN BY A. JOHNSON
DATE 3/2/2020

NISQUALLY ACCESS
ACCESS REDEVELOPMENT
DEMOLITION PLAN

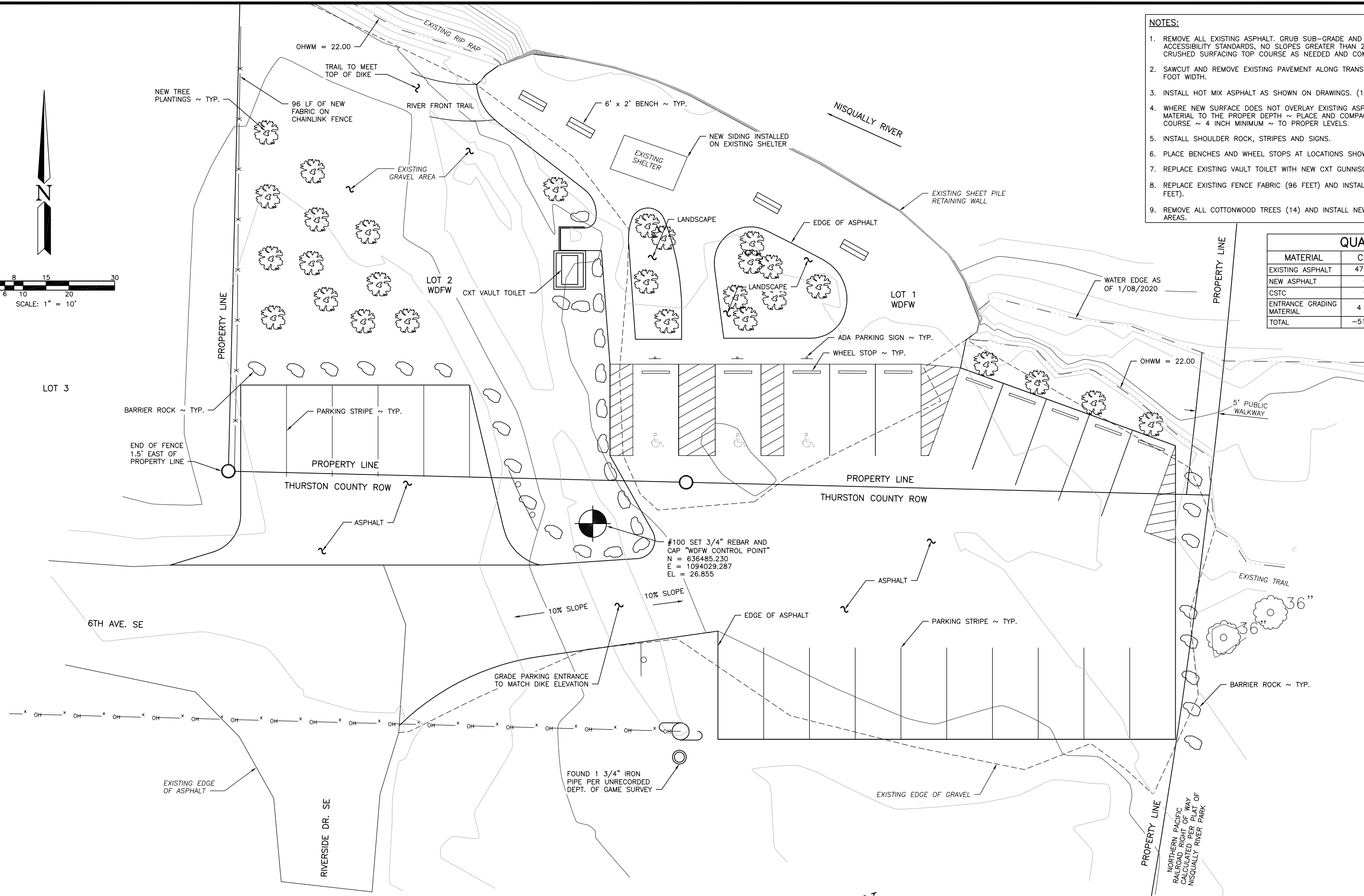
PROJECT NO.
TN:A556:20-1

SHEET	OF
3	7



- NOTES:**
1. REMOVE ALL EXISTING ASPHALT. GRUB SUB-GRADE AND RE-GRADE TO CONFORM TO ACCESSIBILITY STANDARDS, NO SLOPES GREATER THAN 2% AUGMENT WITH ADDITIONAL CRUSHED SURFACING TOP COURSE AS NEEDED AND COMPACT.
 2. SAWCUT AND REMOVE EXISTING PAVEMENT ALONG TRANSITION EDGES ~ MINIMUM 5 FOOT WIDTH.
 3. INSTALL HOT MIX ASPHALT AS SHOWN ON DRAWINGS. (15,800 SQUARE FEET)
 4. WHERE NEW SURFACE DOES NOT OVERLAY EXISTING ASPHALT ~ EXCAVATE EXISTING MATERIAL TO THE PROPER DEPTH ~ PLACE AND COMPACT CRUSHED SURFACING TOP COURSE ~ 4 INCH MINIMUM ~ TO PROPER LEVELS.
 5. INSTALL SHOULDER ROCK, STRIPES AND SIGNS.
 6. PLACE BENCHES AND WHEEL STOPS AT LOCATIONS SHOWN.
 7. REPLACE EXISTING VAULT TOILET WITH NEW CXT GUNNISON TOILET.
 8. REPLACE EXISTING FENCE FABRIC (96 FEET) AND INSTALL NEW FENCE FABRIC (96 FEET).
 9. REMOVE ALL COTTONWOOD TREES (14) AND INSTALL NEW TREES (28) IN LANDSCAPE AREAS.

QUANTITIES			
MATERIAL	CUT	FILL	TOTAL
EXISTING ASPHALT	47 CY	-	-47 CY
NEW ASPHALT	-	147 CY	147 CY
CSTC	-	98 CY	98 CY
ENTRANCE GRADING MATERIAL	4 CY	32 CY	28 CY
TOTAL	-51 CY	277 CY	226 CY



PROPOSED SITE PLAN
SCALE: 1" = 10'

NOT APPROVED FOR CONSTRUCTION. REVIEW ONLY

DATE	REVISION DESCRIPTION	BY
	APPROVED AND RELEASED FOR CONSTRUCTION	
CHIEF ENGINEER	DATE:	
PROGRAM	DATE:	

0 1" BAR MEASURES ONE INCH ON 24x36 DRAWINGS

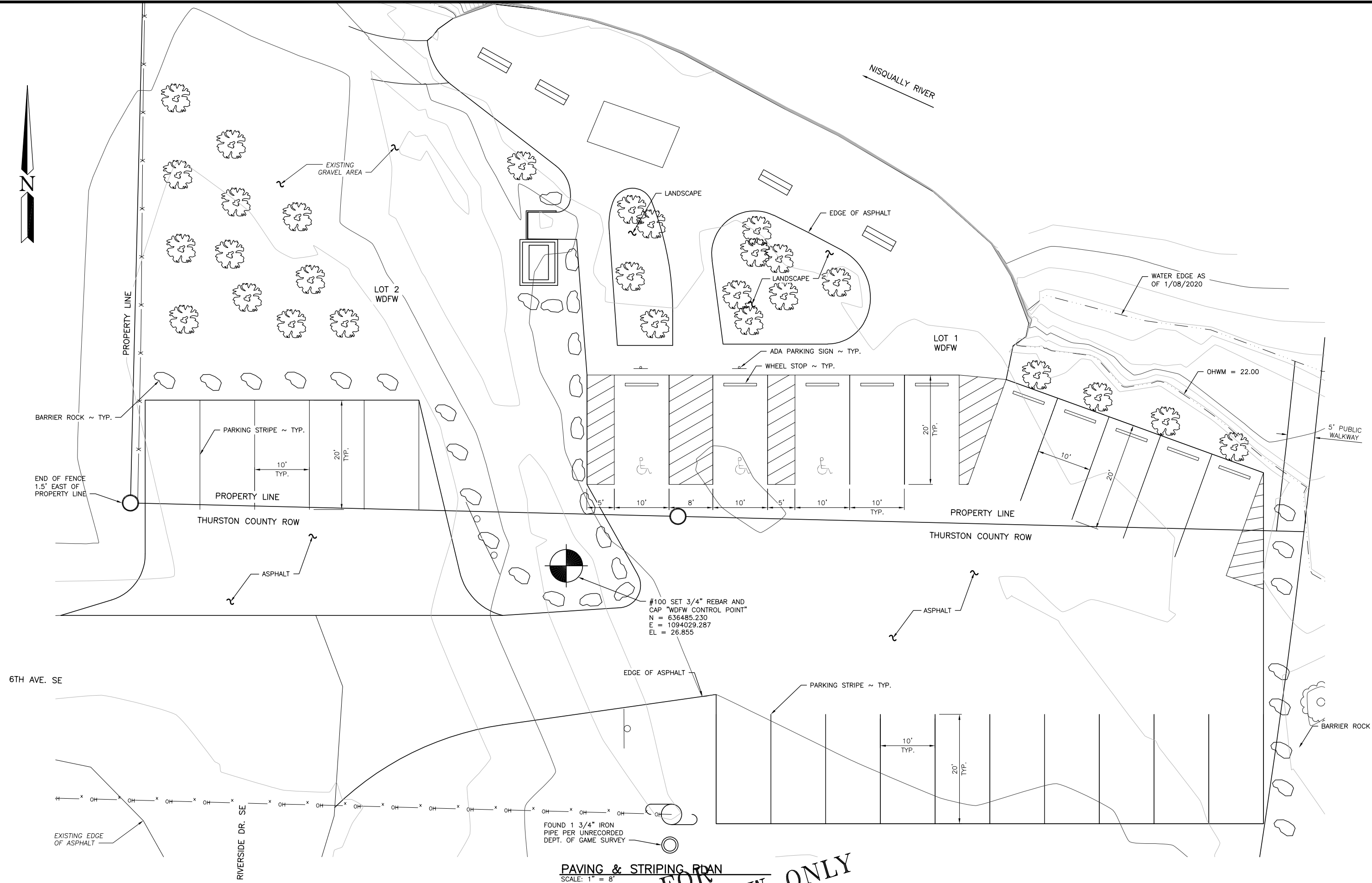
DESIGNED BY E. NICOLAI
CHECKED BY
DRAWN BY A. JOHNSON
DATE 3/2/2020

NISQUALLY ACCESS
ACCESS REDEVELOPMENT
PROPOSED SITE
PLAN

PROJECT NO.
TN:A556:20-1

SHEET OF
4 7

WASHINGTON DEPARTMENT OF
FISH & WILDLIFE



PAVING & STRIPING PLAN
SCALE: 1" = 8'

NOT APPROVED FOR CONSTRUCTION. REVIEW ONLY

DATE	REVISION DESCRIPTION	BY
	APPROVED AND RELEASED FOR CONSTRUCTION	
CHIEF ENGINEER	DATE:	
PROGRAM	DATE:	

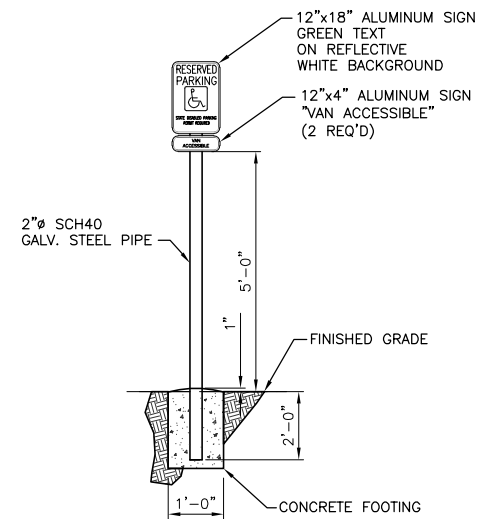
0 1"
BAR MEASURES
ONE INCH ON
24x36 DRAWINGS

DESIGNED BY E. NICOLAI
CHECKED BY
DRAWN BY A. JOHNSON
DATE 3/2/2020

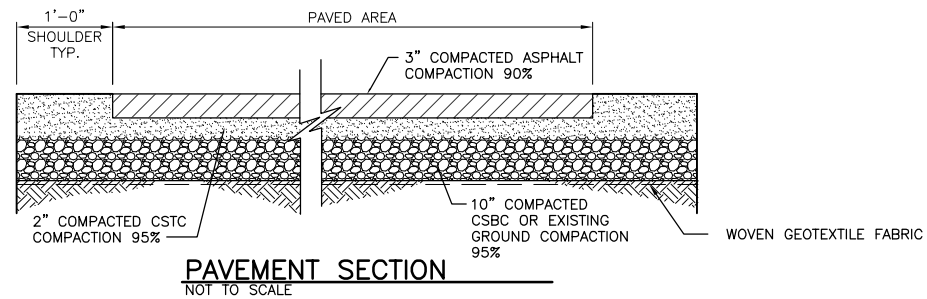
**NISQUALLY ACCESS
ACCESS REDEVELOPMENT
PAVING & STRIPING
PLAN**

PROJECT NO. TN:A556:20-1	
SHEET 5	OF 7

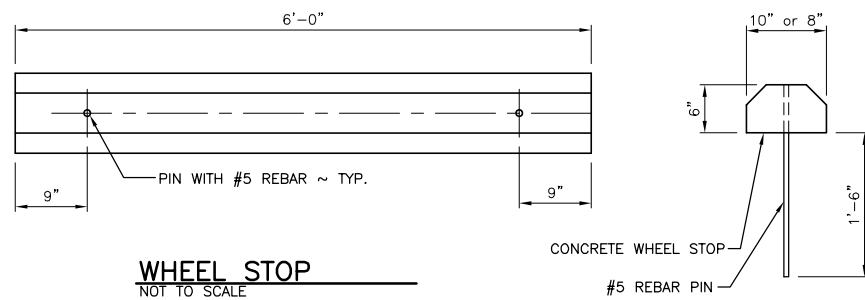
**WASHINGTON DEPARTMENT OF
FISH & WILDLIFE**



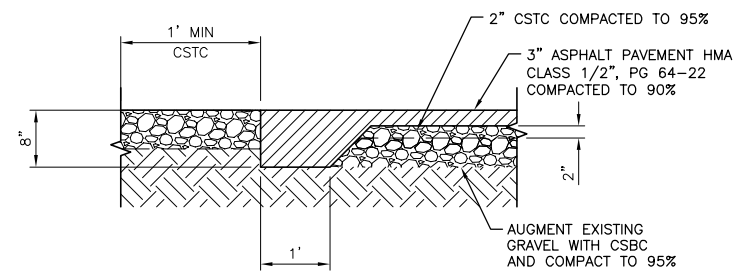
ACCESSIBLE PARKING SIGN
NOT TO SCALE



PAVEMENT SECTION
NOT TO SCALE



WHEEL STOP
NOT TO SCALE



THICKENED EDGE AT ASPHALT
NOT TO SCALE

NOTE:
WDFW SHALL GRADE SUBGRADE TO 3 INCH BELOW FINISHED GRADE WITH 3 TO 5 FOOT TRANSITION TO GRAVEL PARKING.

WASHINGTON DEPARTMENT OF
FISH & WILDLIFE

NOT APPROVED FOR CONSTRUCTION. REVIEW ONLY

DATE	REVISION DESCRIPTION	BY
	APPROVED AND RELEASED FOR CONSTRUCTION	
CHIEF ENGINEER	DATE:	
PROGRAM	DATE:	

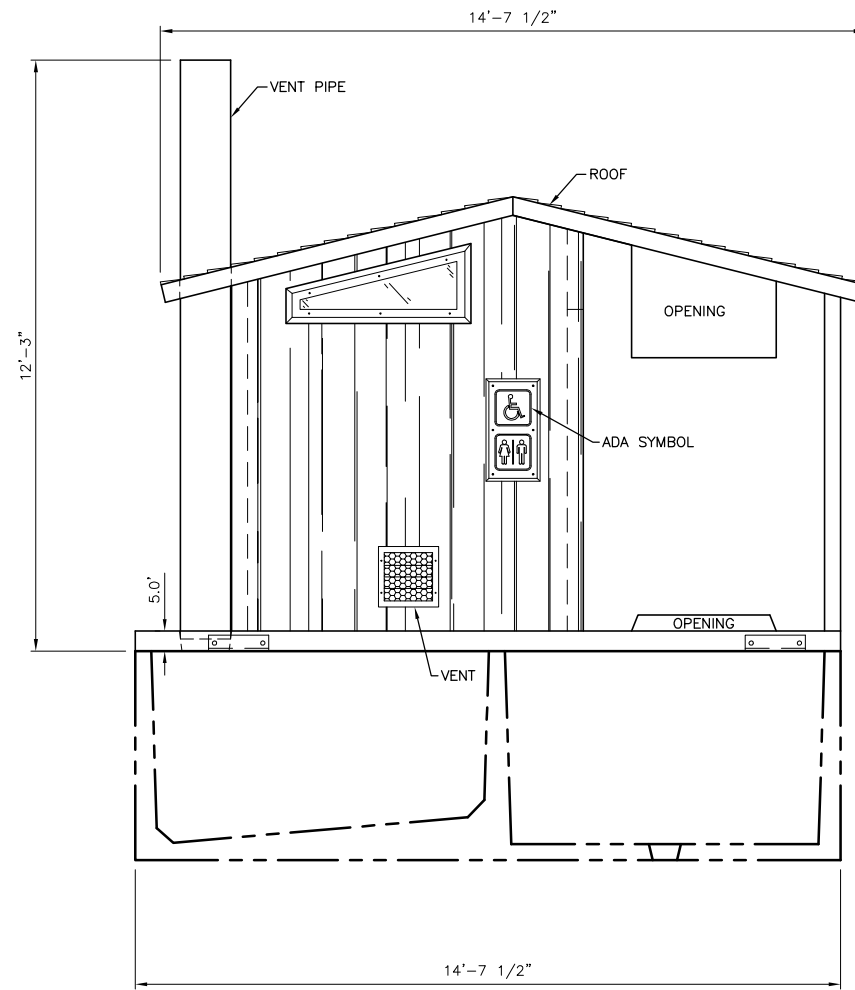
0 1"
BAR MEASURES
ONE INCH ON
24x36 DRAWINGS

DESIGNED BY E. NICOLAI
CHECKED BY
DRAWN BY A. JOHNSON
DATE 3/2/2020

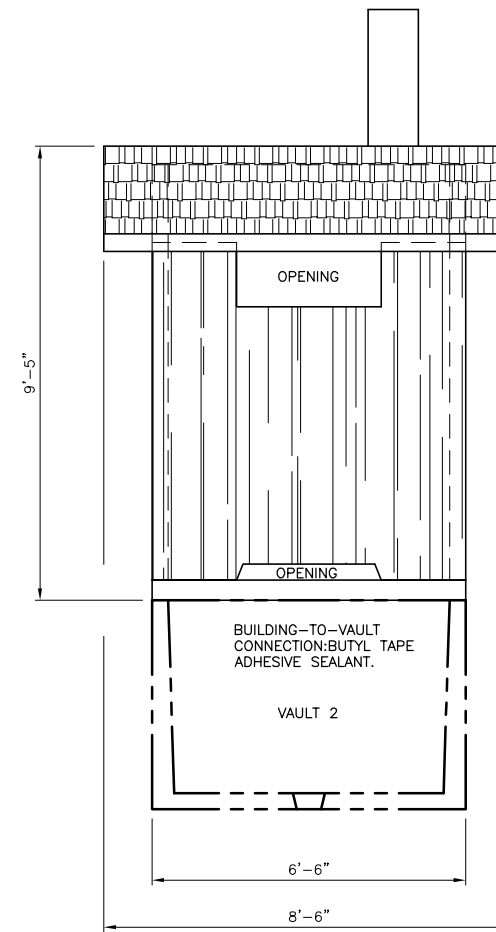
NISQUALLY ACCESS
ACCESS REDEVELOPMENT
PAVING & PARKING
DETAILS

PROJECT NO.
TN:A556:20-1

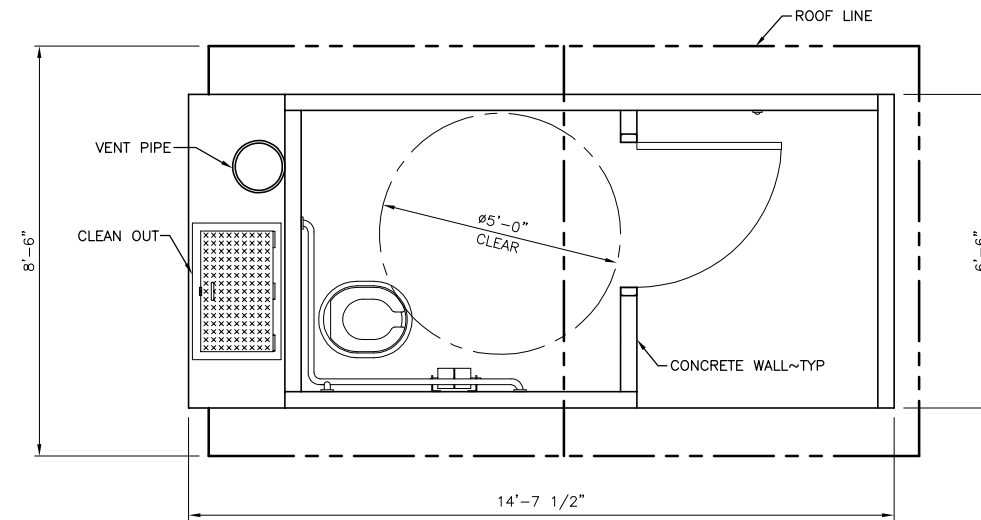
SHEET	OF
6	7



FRONT ELEVATION
NOT TO SCALE



SIDE ELEVATION
NOT TO SCALE



CXT VAULT TOILET PLAN
NOT TO SCALE

WASHINGTON DEPARTMENT OF
FISH & WILDLIFE

**NOT APPROVED FOR
CONSTRUCTION. REVIEW ONLY**

0 1"
BAR MEASURES
ONE INCH ON
24x36 DRAWINGS

DESIGNED BY E. NICOLAI
CHECKED BY
DRAWN BY A. JOHNSON
DATE 3/2/2020

NISQUALLY ACCESS
ACCESS REDEVELOPMENT
CXT VAULT TOILET
PLAN & ELEVATIONS

PROJECT NO.
TN:A556:20-1

SHEET OF
7 7