



# Mountain Goat Hunt Area 5-7 - Mount Saint Helens South

2020 - 2021  
Hunting Season

### Administrative Boundaries Deer Area Boundary Landmarks (Based on the Legal Descriptions)

- Deer Area Boundary
- Starting Point as described in the Legal Description
- Intersection of Segments as described in the Legal Description

### Public Land Survey System (Township and Range) Other Major Public Land Ownership

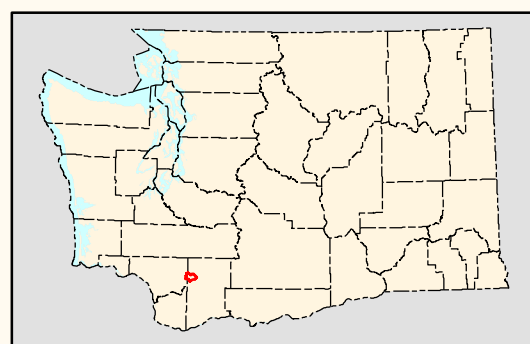
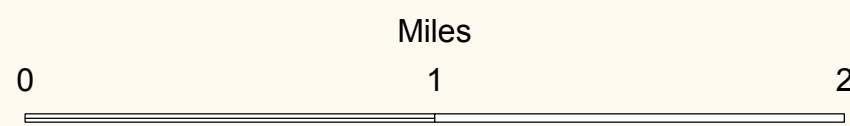
- Township Line
- Section Line
- Political Boundaries
- County Line
- Federal - Forest Service
- State - DNR

### Roads

- Local Road (Unimproved to Paved)
- Trail

### Utilities

- ### Hydrography
- Annual River or Stream
  - Lake, Wide River, or Ocean



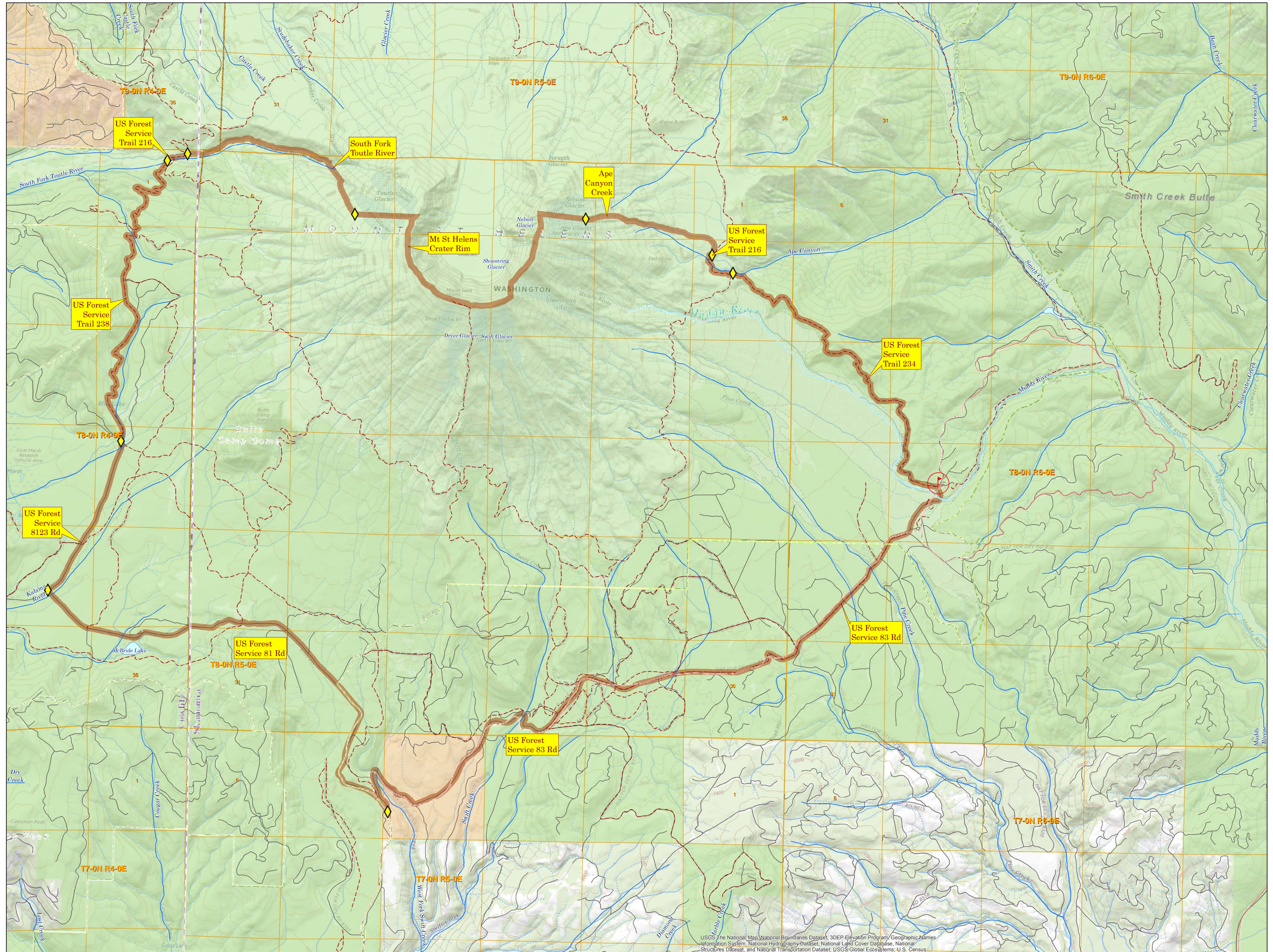
- Sources of Information –
- Hunt Units: WA Department of Fish and Wildlife; Wildlife Program (2020)
  - Land Ownership: WA Department of Natural Resources; Resource Mapping Section (2020)
  - Political and Survey Boundaries: WA Department of Natural Resources; Land Survey Section (2020)
  - Transportation and Utilities: Washington State Department of Natural Resources (2011); WA Department of Transportation (2017); US Geological Survey; National Mapping Division (1989)
  - City Limits: WA Department of Transportation (2011)
  - Hydrography: WA Department of Fish and Wildlife, Fish Program (2020); Delorme Publishing Company; Washington Atlas and Gazetteer (2006)

### DISCLAIMER

Due to the dynamic nature of data and the need to rely on outside sources of information the Washington Department of Fish and Wildlife cannot accept responsibility for errors or omissions in the data and information contained in this product. There are no warranties that accompany the maps and information contained in this product. For legal definitions of hunting regulations, seasons, and boundaries, the user should refer to Chapters 220-415-130 of the Washington Administrative Code (<http://www.leg.wa.gov/wac/>)



Map Published April 2020



USGS: the National Map, National Boundaries Dataset, 3DEP Elevation Program, Geographic Names Information System, National Hydrography Dataset, National Land Cover Database, National Structures Dataset, and National Transportation Dataset; USGS Global Ecosystems; U.S. Census