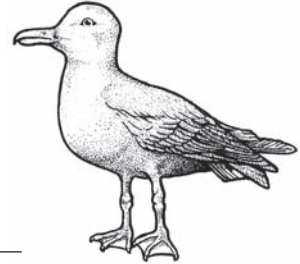


# Low Tide Hunt



\_\_ 2 bivalves (with hinged shells) \_\_\_\_\_

\_\_ 4 birds \_\_\_\_\_



\_\_ 2 gastropods (snail and slug family) \_\_\_\_\_

\_\_ 2 different kinds of eelgrass \_\_\_\_\_

\_\_ a red algae

\_\_ a green algae



\_\_ a brown algae

\_\_ 2 animal tracks \_\_\_\_\_



\_\_ 3 mud dwellers \_\_\_\_\_

\_\_ a detritivore (eats detritus)



\_\_ 2 kinds of crabs \_\_\_\_\_

\_\_ a crab molt (a shed shell)



\_\_ 2 unique smells \_\_\_\_\_

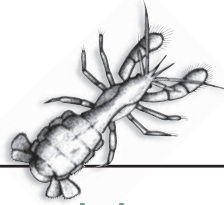
\_\_ 2 epiphytes (living on a plant) \_\_\_\_\_

\_\_ 1 filter feeder



\_\_ a sponge

\_\_ garbage

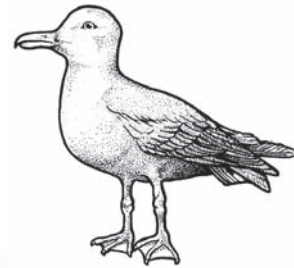


# High Tide Hunt

\_\_ 2 different bivalves (hinged shells)



\_\_ 4 different birds



\_\_ 2 different gastropod shells (snails, limpets)

\_\_ 2 different eelgrass species

\_\_ eelgrass with epiphytic algae



\_\_ eelgrass with Spirorbis (snail worm) casings

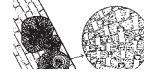


\_\_ eelgrass with bryozoan colonies

\_\_ a red algae



\_\_ a green algae



\_\_ a brown algae



\_\_ an amphipod

\_\_ a crab molt (empty shell)

\_\_ 2 unique smells

\_\_ 4 Signs of human influence

