

Shrubsteppe habitat



Left: Scotch Creek Wildlife Area

Top right: Grant County shrubsteppe

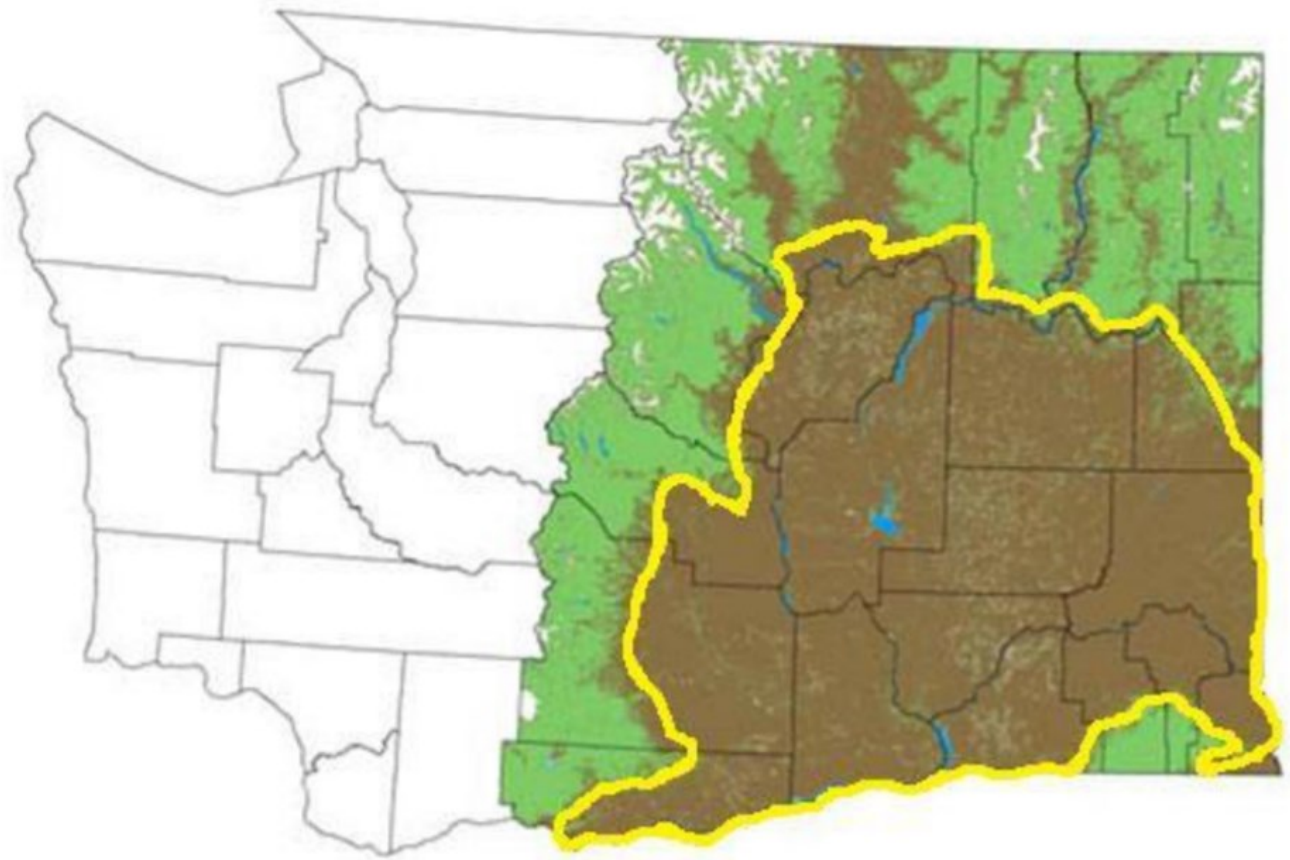
Middle right: Okanogan County wildflowers in spring

Lower right: Springtime sagebrush at Rocky Ford Wildlife Area Unit

Intermountain West

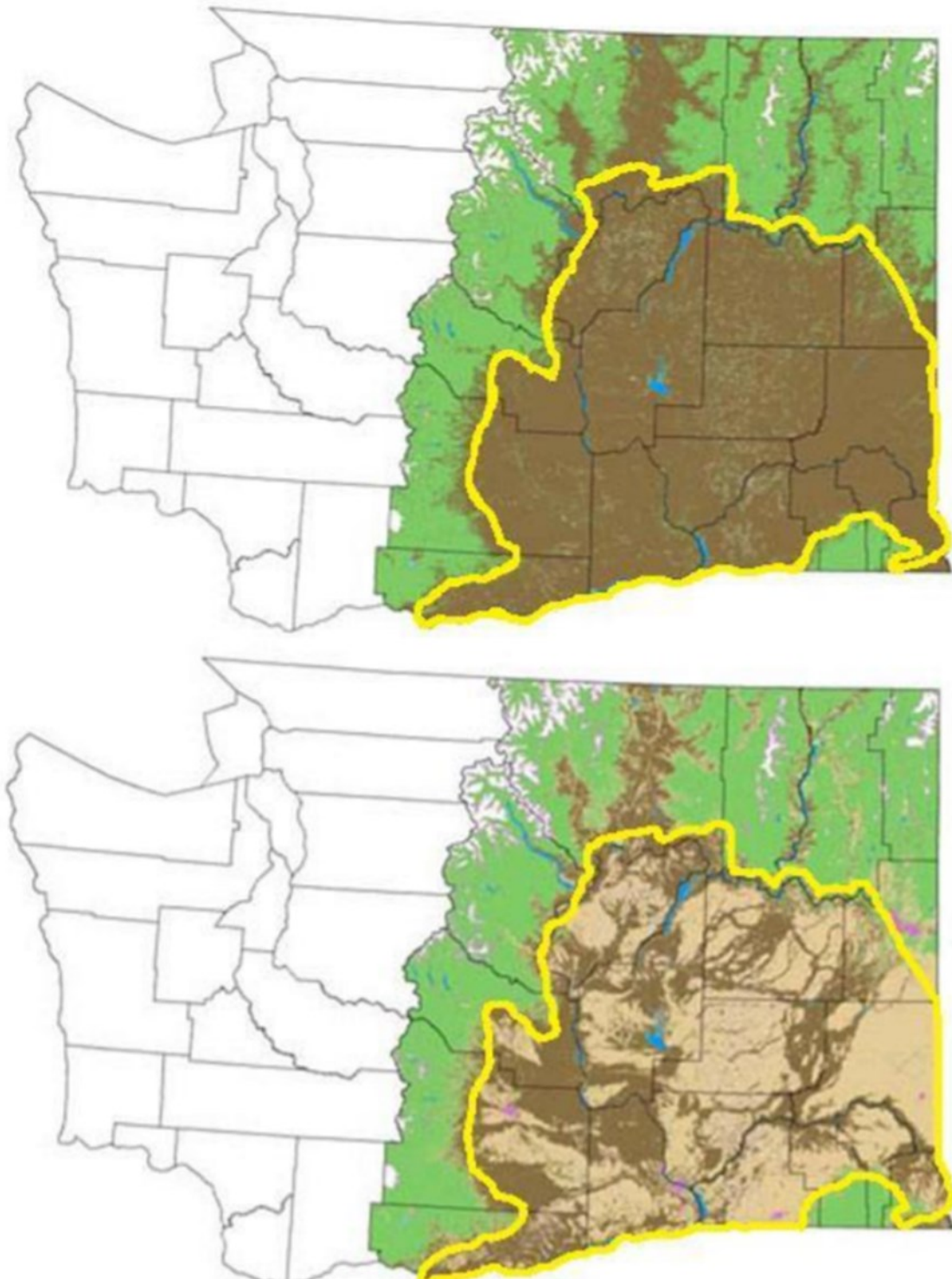


Shrubsteppe habitat distribution in Washington



Washington's shrubsteppe is mostly found inside the yellow outline

Shrubsteppe habitat decline



Washington has experienced serious declines in shrubsteppe over the past century. The top map shows historic shrubsteppe habitat distribution and the bottom map shows shrubsteppe habitat today.

Green = forest, brown = shrubsteppe, tan = agriculture, yellow outline = Columbia Plateau Ecoregion