

WAC 220-500-140: Firearms and target practicing

Fish and Wildlife Commission Meeting

July 31, 2020



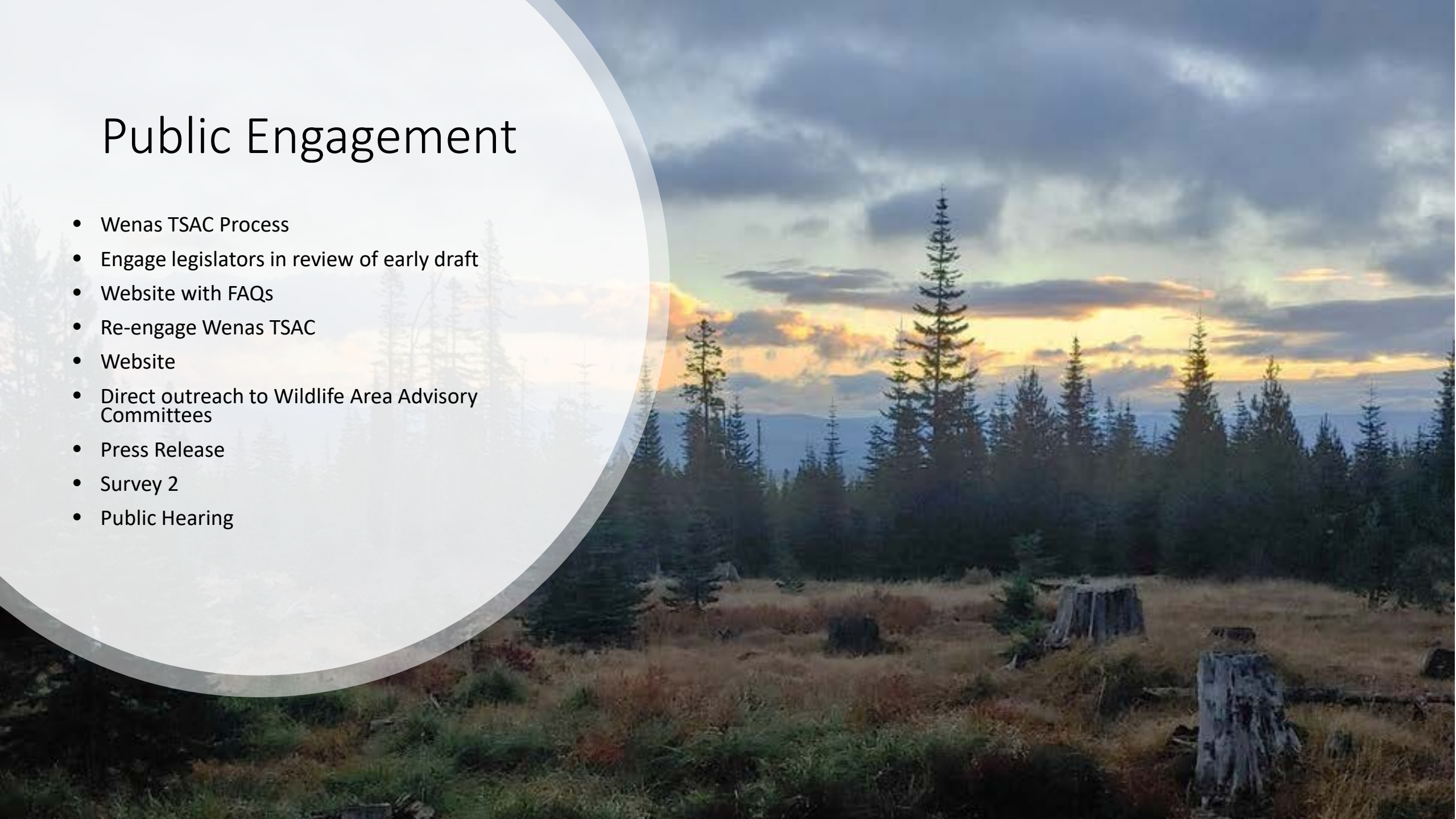
Washington Department of
FISH and WILDLIFE

Overview

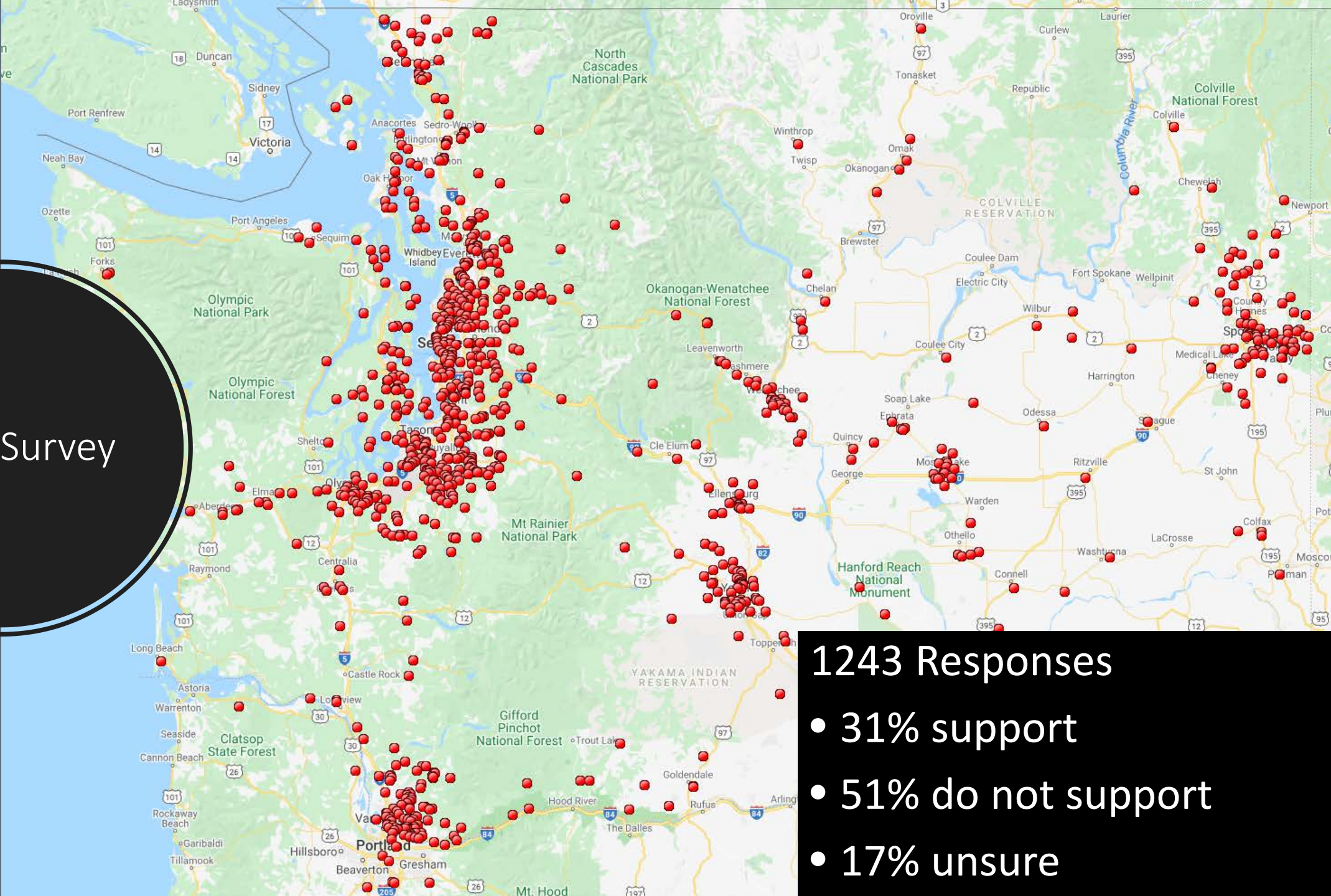
- Introduction
- Public Engagement Summary
- Rule Sections and Comments
- Summary of Recommended Revisions
- Next Steps
- Q&A

Public Engagement

- Wenas TSAC Process
- Engage legislators in review of early draft
- Website with FAQs
- Re-engage Wenas TSAC
- Website
- Direct outreach to Wildlife Area Advisory Committees
- Press Release
- Survey 2
- Public Hearing



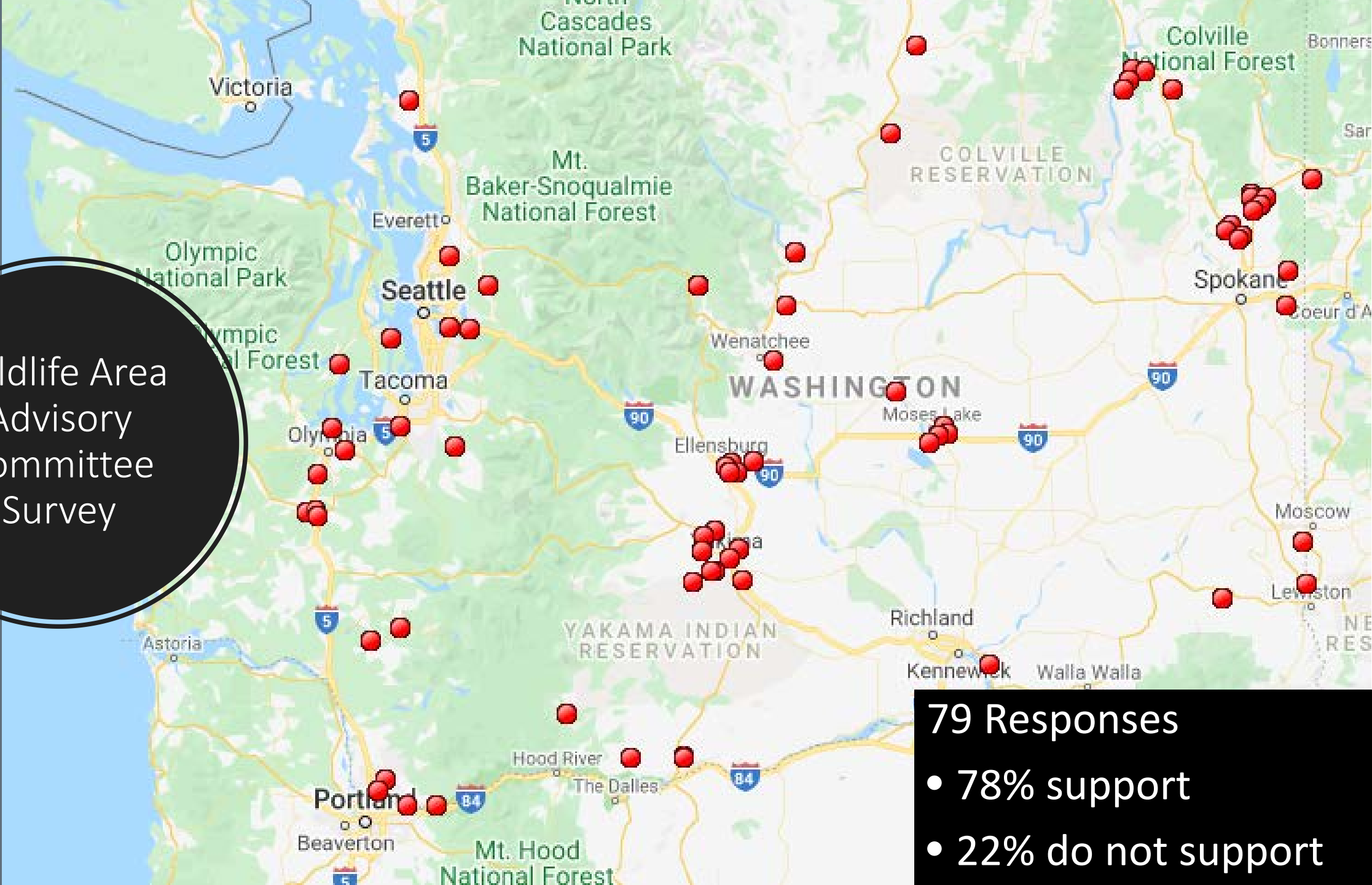
Public Survey



1243 Responses

- 31% support
- 51% do not support
- 17% unsure


Wildlife Area
Advisory
Committee
Survey



79 Responses

- 78% support
- 22% do not support

Proposed Rule Update & Summary of Comments

- Definition of recreational target shooting
 - General target shooting restrictions
 - Prohibited ammunition
 - Where target shooting is allowed
 - Where target shooting is prohibited
 - When target shooting is prohibited
 - Allowable targets
 - Litter
- 

Definition of Recreational Target Shooting

The act of shooting projectiles for practice, sighting in, or other reasons, and involves the discharging of firearms, air guns, air bows, crossbows, or archery equipment.

Recreational target shooting does not include the activity of lawful hunting or hunting dog training.



General Restrictions

- WDFW may designate or restrict locations, times, and manner for recreational target shooting consistent with resource management concerns, management agreements or requirements, recreational use compatibility, or public safety concerns.
- Open unless posted closed or otherwise restricted by rule
- Persons are responsible for knowing other laws



Comments

- The opening section of the proposed rule update is too open ended and could lead to unwarranted closures without warning.
- WDFW should just adopt WAC 332-52-145.
- Educate, educate, educate!



Prohibited Ammunition

Tracer bullets or shells, incendiary ammunition, or steel core bullets.



Comments

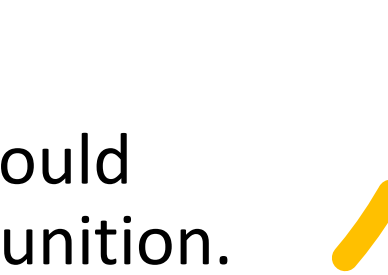
- Allow steel core ammunition
- Ban all lead ammunition
- Remove all restrictions on archery and air guns



Recommended Revision(s)

"(5) The discharge of tracer bullets or shells, or incendiary ammunition, ~~or steel core bullets,~~ is specifically prohibited on all department lands."

Rationale:

- Wildfire danger is mitigated by emergency fire restrictions. Should allow steel core bullets outside of emergency fire restrictions unless otherwise restricted.
 - Banning steel core ammunition could promote higher use of lead ammunition.
- 

Where Target Shooting is Allowed

- Where a reasonable person would believe is free of risk to person, animals, property
- Firearms using single projectile ammo of .17 caliber or greater or shot equal to or greater than BB; or compressed air shooting ≥ 800 f/s
 - On designated shooting areas
 - With backstop as defined in rule
- using (1) archery equipment, crossbows, air bows, or (2) shotguns discharging shot smaller than size BB, is permitted:
 - On designated shooting areas
 - Where reasonable person...



Where Shooting is Prohibited

- On, from, at, along, across, or down...
 - Water access areas
 - Roads and designated trails
 - Utility lines, poles, light posts
 - Any water body or stream
- Within 500 feet of...
 - Structures
 - Utilities
 - Campgrounds
 - Viewing platforms or structures
- In other areas posted restricted



Comments

- The language restricting shooting by roads is vague. What's a road?
- Allow unrestricted shooting everywhere.
- Allow shooting over/near dry (seasonal) water bodies.
- Allow summer shooting on westside and where no vegetation.
- Ban all shooting on WDFW managed lands or restrict target shooting to designated ranges.
- Require a backstop for all shooting.

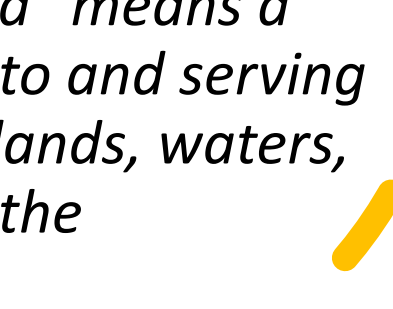
Recommended Revision(s)

"(e) Recreational target shooting is specifically prohibited:(i) On, from, at, along, across, or down: (B) Any road as defined in WAC 220.500.020."

Rationale: Proposed language is vague about what roads were meant by the section.

WAC 220.500.020 (21):

(21) "Road," pursuant to RCW 46.04.500 and 46.04.197, means that portion of an every way publicly maintained for the purposes of vehicular travel. For purposes of this chapter, "road" means a road wholly or partly within or adjacent to and serving department-owned or controlled public lands, waters, or access areas under the jurisdiction of the department.



Allowable Targets

- Commercially manufactured targets or similar privately manufactured
- Steel targets within a designated shooting area or outside a designated area Oct 1-May 31
- Biodegradable clay targets



Comments

- Allow steel targets year round.



Prohibited Targets

- Buildings;
- Power stations, cell phone towers, utility poles, light posts, wind turbines, or other public utility structures;
- Gates, fence posts or rails;
- Vehicles, or parts thereof;
- Machinery, or parts thereof;
- Signs, kiosks, or informational panels of any kind;
- Appliances or electronics;
- Furniture;
- Pallets;
- Glass;
- Explosive and incendiary items, including binary exploding targets (i.e. Tannerite);
- Containers of liquids, chemicals, paints, or compressed gas;
- Standing or moving water;
- Live or dead trees or other vegetation;
- Animals or animal carcasses.



Comments

- Allow binary exploding targets
- Allow alternative targets, including: wood pallets, tree stumps, plastic jugs of water, aluminum cans, old yard signs, fruit.



When Target Shooting is Allowed

- ½-hour before sunrise to ½-hour after sunset



Comments

- Shooting in the dark is unsafe. Restrict shooting to daylight hours.



Litter

Unlawful to fail to remove and transport from WDFW lands for proper disposal all:

- shell casings
- shotgun hulls
- ammunition packaging
- targets & target debris
- (excludes biodegradable clay targets)

Failure to remove any such item is prohibited and constitutes littering.



Comments

- Provide dumpsters
- Enforce litter laws
- Increase penalties for littering
- Organize volunteer clean up events.



Summary of Revisions

1. "(5) The discharge of tracer bullets or shells, or incendiary ammunition, ~~or steel core bullets,~~ is specifically prohibited on all department lands."
2. "(e) Recreational target shooting is specifically prohibited:(i) On, from, at, along, across, or down:
(B) Any road as defined in WAC 220.500.020."



Next Steps

- August 21: Commission vote
- September to December (and beyond): Education and Outreach
- January 1: Enactment

Other Priorities

- Ongoing Range Development
- Work with North American Non-Lead Partnership





Q&A