



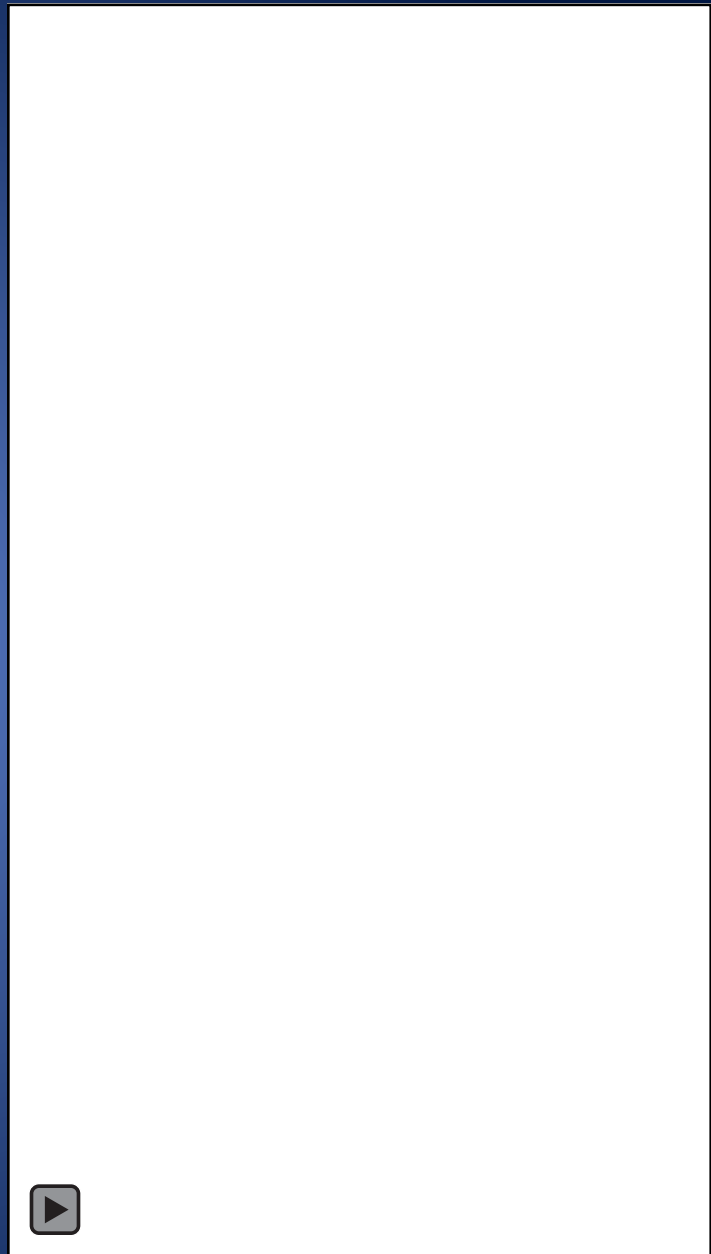
# Mazama Pocket Gopher Recovery Plan and Periodic Status Review

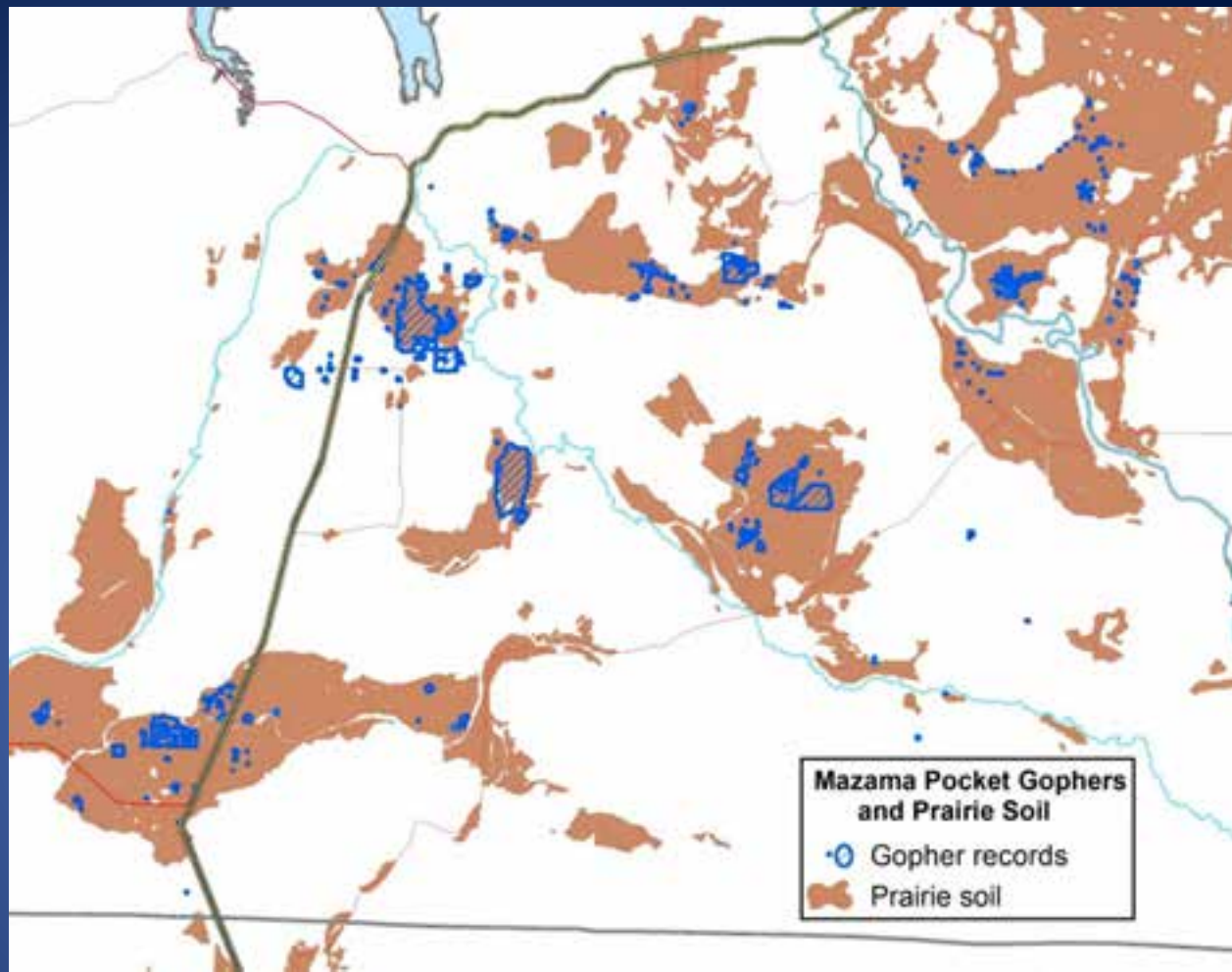


Washington Department of  
**FISH and WILDLIFE**



# Keystone species

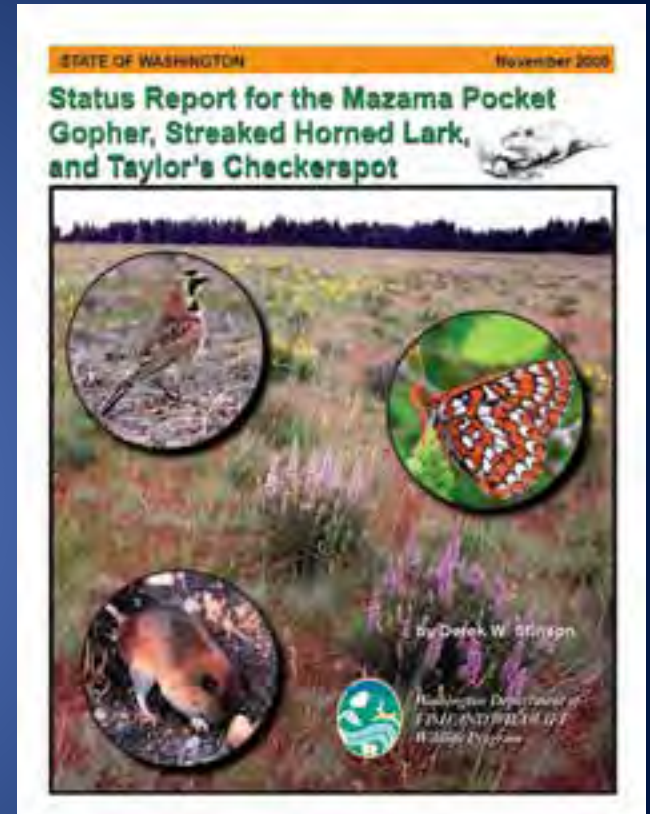




Historic – 8 subspecies in Washington

Current – 5 subspecies occurring on prairie soils in south Puget Sound and 1 in ONP

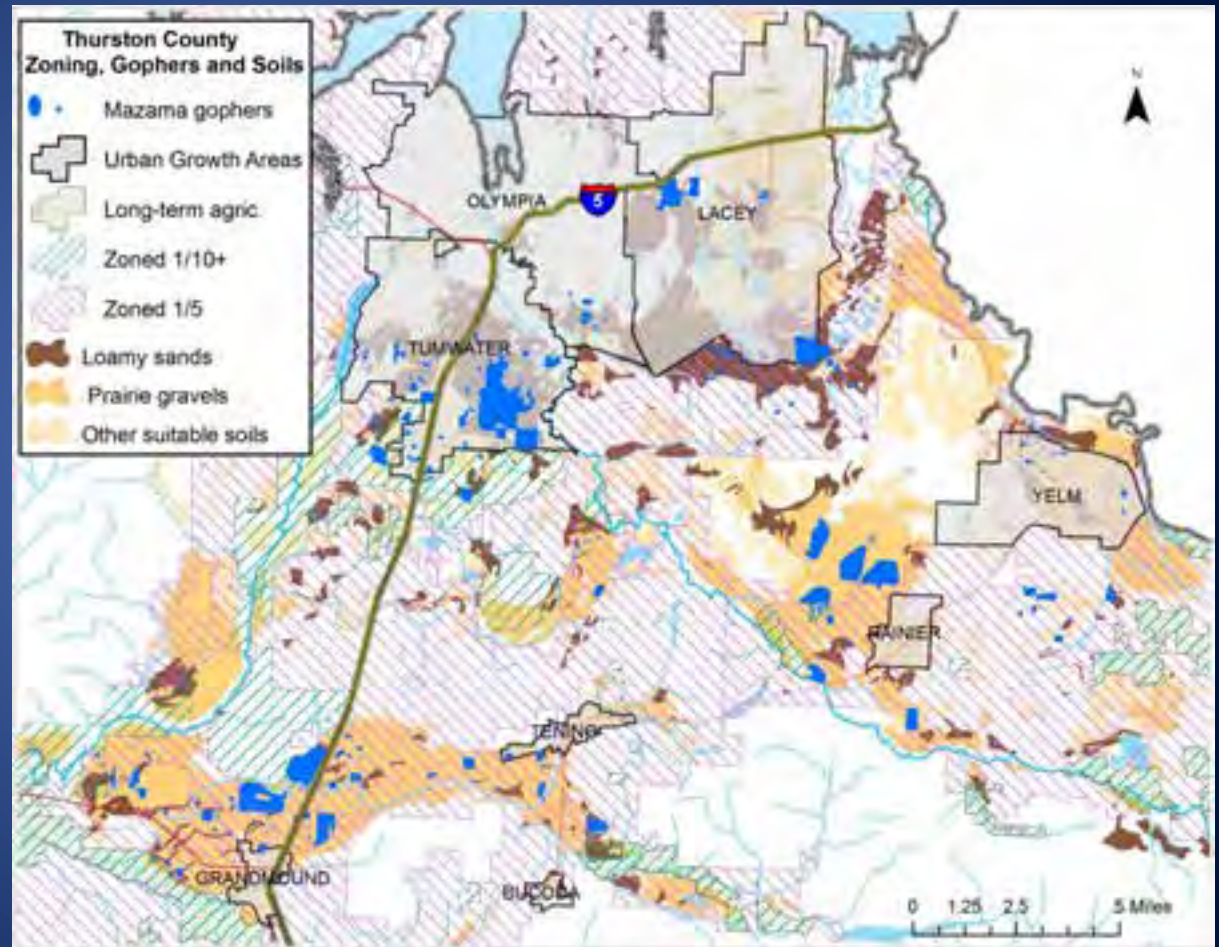
# State and Federal Status



2006 – state-listed threatened at the species level  
2014 – four subspecies listed as threatened under the federal ESA in Thurston and Pierce counties

# Factors Affecting Populations

- Habitat loss, fragmentation, continued development
- Mortalities from roads, domestic pets traps, poisons
- Invasive vegetation, Scotch broom



# Conservation & Management Actions

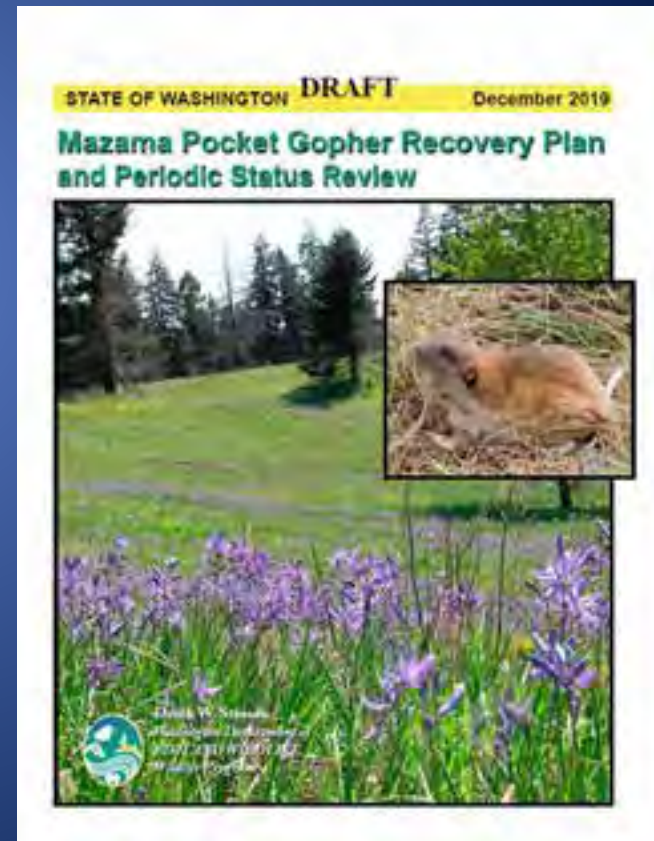
- Habitat protection and restoration
- Surveys & research
- Strong and longstanding collaboration



# Recovery Plan

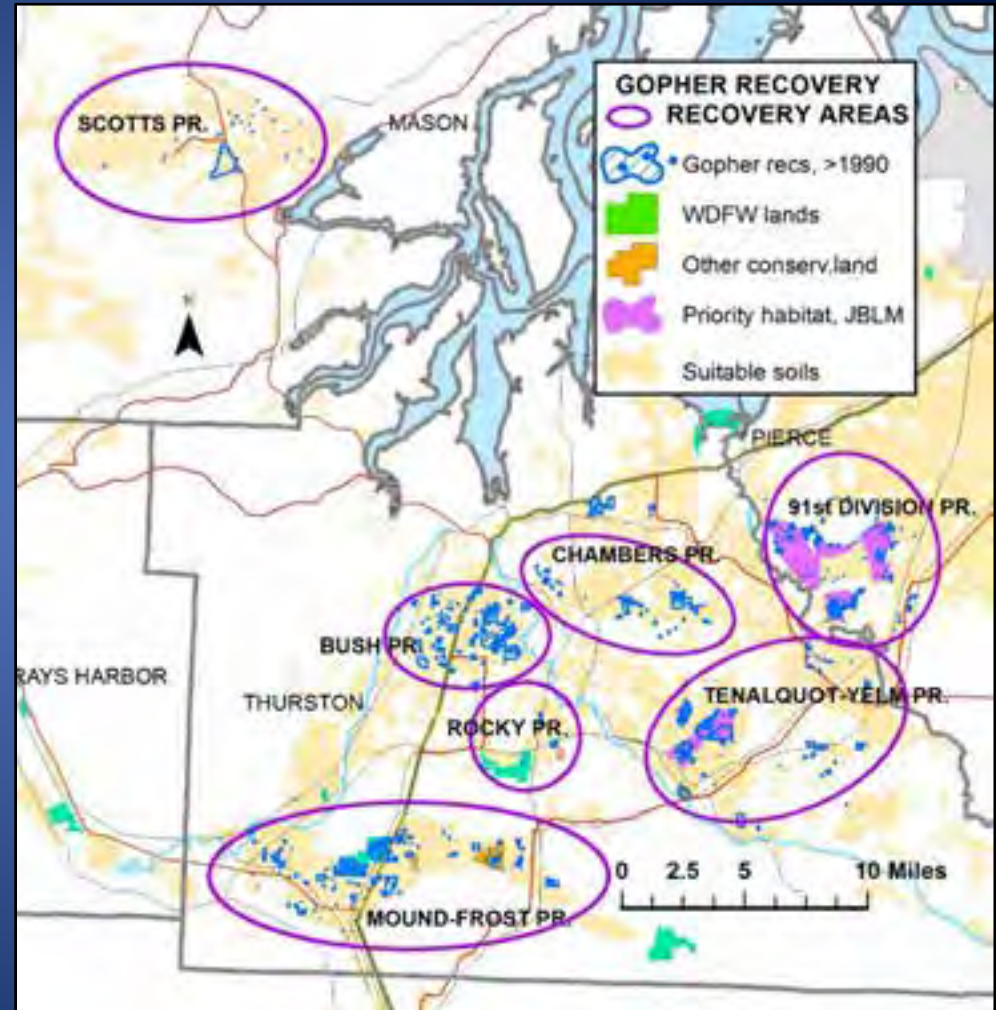
**Goal:** “to secure and maintain self-sustaining representative populations of all the distinct genetic groups ...”

*Representation*  
*Redundancy*  
*Resilience*



# Recovery Objectives

Mazama pocket gopher populations persist on reserves in the 7 geographic areas encompassing the major genetic groups in South Sound.







# Recovery Plan: Population Objective

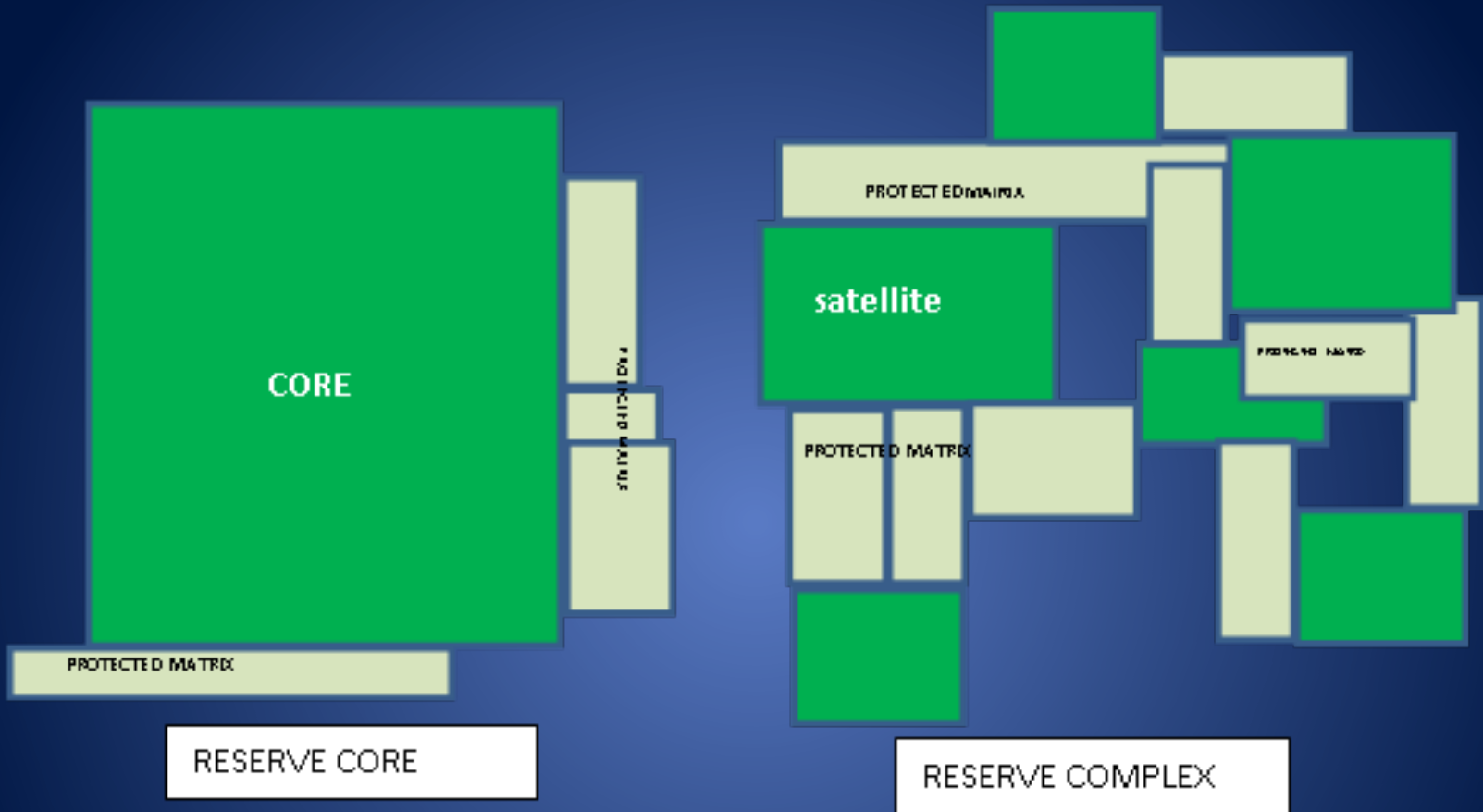
**Population Size:** Populations of >1000 gophers were modeled to have a ~98% probability of persistence for ~50 years.

**Population Density:** limited data suggest 5-10/ac

**Area needs:** typically species occupy a portion of habitat at any time; assuming ~40%, then >1,000 MPG may need 250-500 ac.

**Number of Populations:** >1 population per area where possible

# 'Reserves' needed for recovery: reserve types



## Reserves and Reserve Complexes:



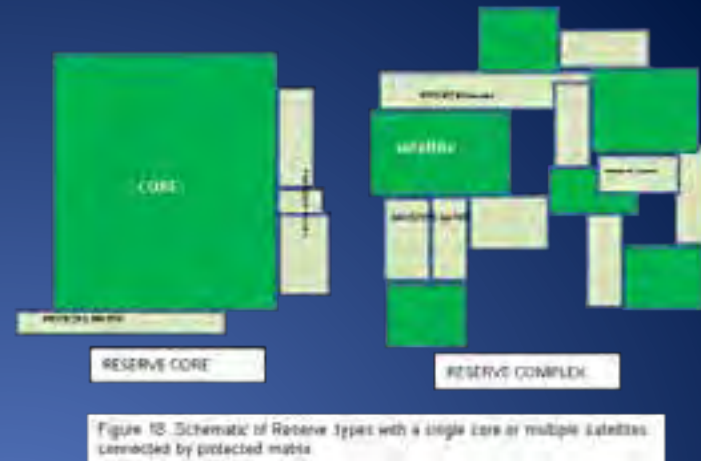
Committed to perpetual management for MPG.  
Development rights retired by easement or deed.

- **Satellites:** protected habitat ( $\geq 10$  acres) connected by Protected Matrix



**Protected matrix:** multi-use public lands (e.g. airports, parks) or private rural or low intensity ag. lands protected by easements or agreements; management compatible with gopher dispersal/occupancy.

# Recovery Objectives



**Down-list when:** Each reserve /complex in  $\geq 5$  of 7 Recovery Areas supports  $\geq 1,000$  gophers.

**De-list when:** Each reserve/complex in the 7 Recovery Areas supports a population of  $\geq 1,000$  gophers for a 20 year period.

# Recovery Plan: # of reserves

Genetic group / Recovery Area	# Reserves for down-list	# Reserves for de-list
1. T. m. pugetensis	2	3
2. T.m. tumuli	1	2
T.m. yelmensis group		
3. Mound-Frost Prairies	2	3
4. Tenalquot-YelmPr	1	2
5. Chambers Pr	1	2
6. T.m. glacialis (Pierce Co.)	2	3
7. T.m. couchi (Mason Co.)	1	2

# Recovery Plan: # of reserves

Genetic group / Recovery Area	# Reserves for down-list	# Reserves for de-list
1. T. m. pugetensis	2	3
2. T.m. tumuli	1	2
T.m. yelmensis group		
3. Mound-Frost Prairies	2 ✓	3
4. Tenalquot-YelmPr	1 ✓	2
5. Chambers Pr	1	2
6. T.m. glacialis (Pierce Co.)	2 ✓	3
7. T.m. couchi (Mason Co.)	1	2

# Status Recommendation:

Retain threatened status

## Public Comments:

5 ½ supported  
listing/recovery action

11 ½ did not support



# Questions?

