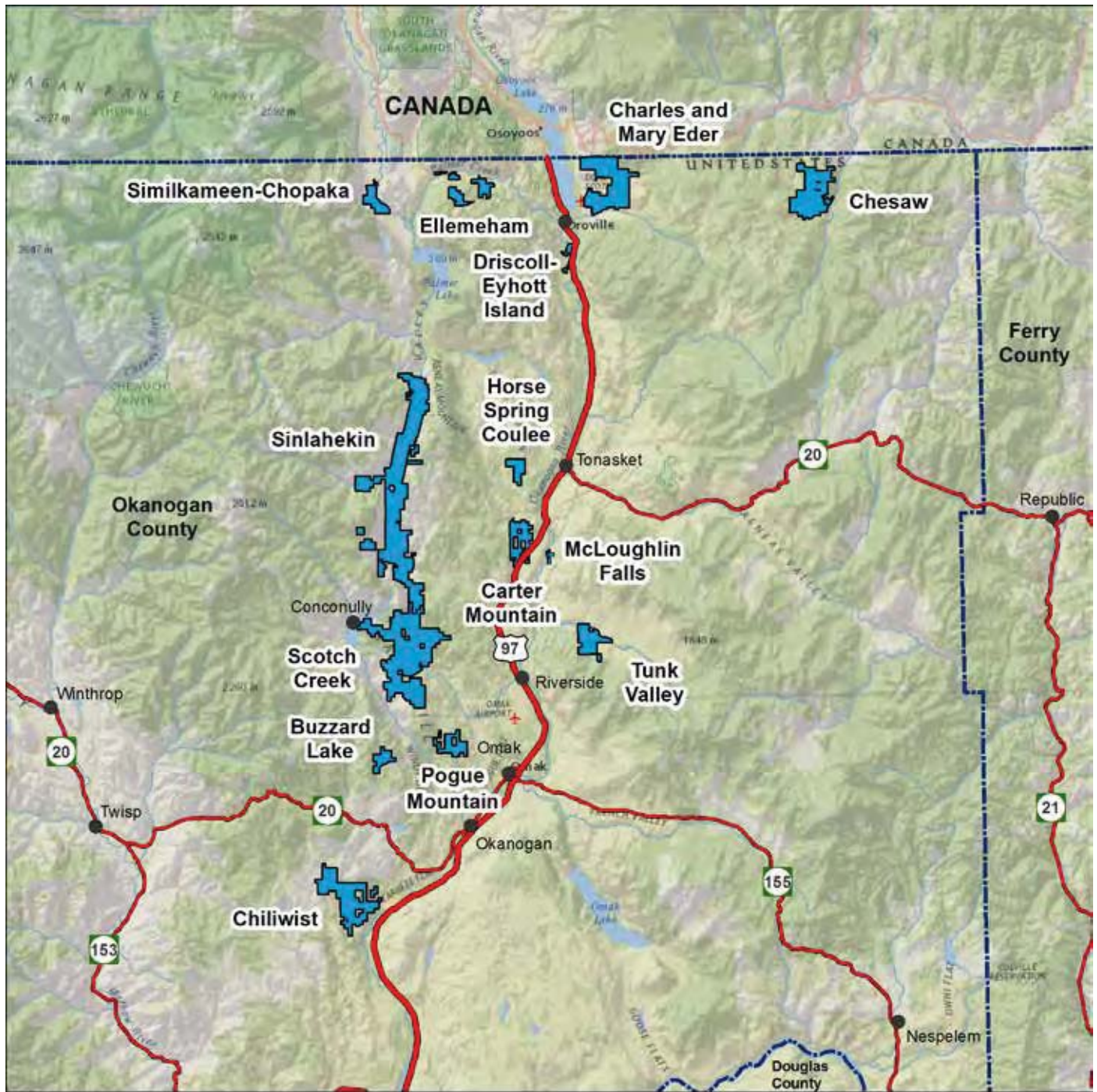


Map 1. Scotch Creek and Sinlahekin Wildlife Areas Vicinity Map




Scotch Creek and Sinlahekin Wildlife Areas

 Unit Area

 US Highway
 State Route




 0 5
 Miles

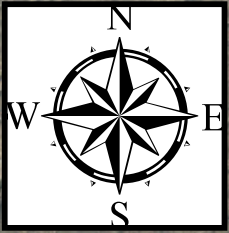


2/27/2017

Wildlife Area Complexes of Northern Okanogan County



Tunk Valley Wildlife Unit







Tunk Mt Rd

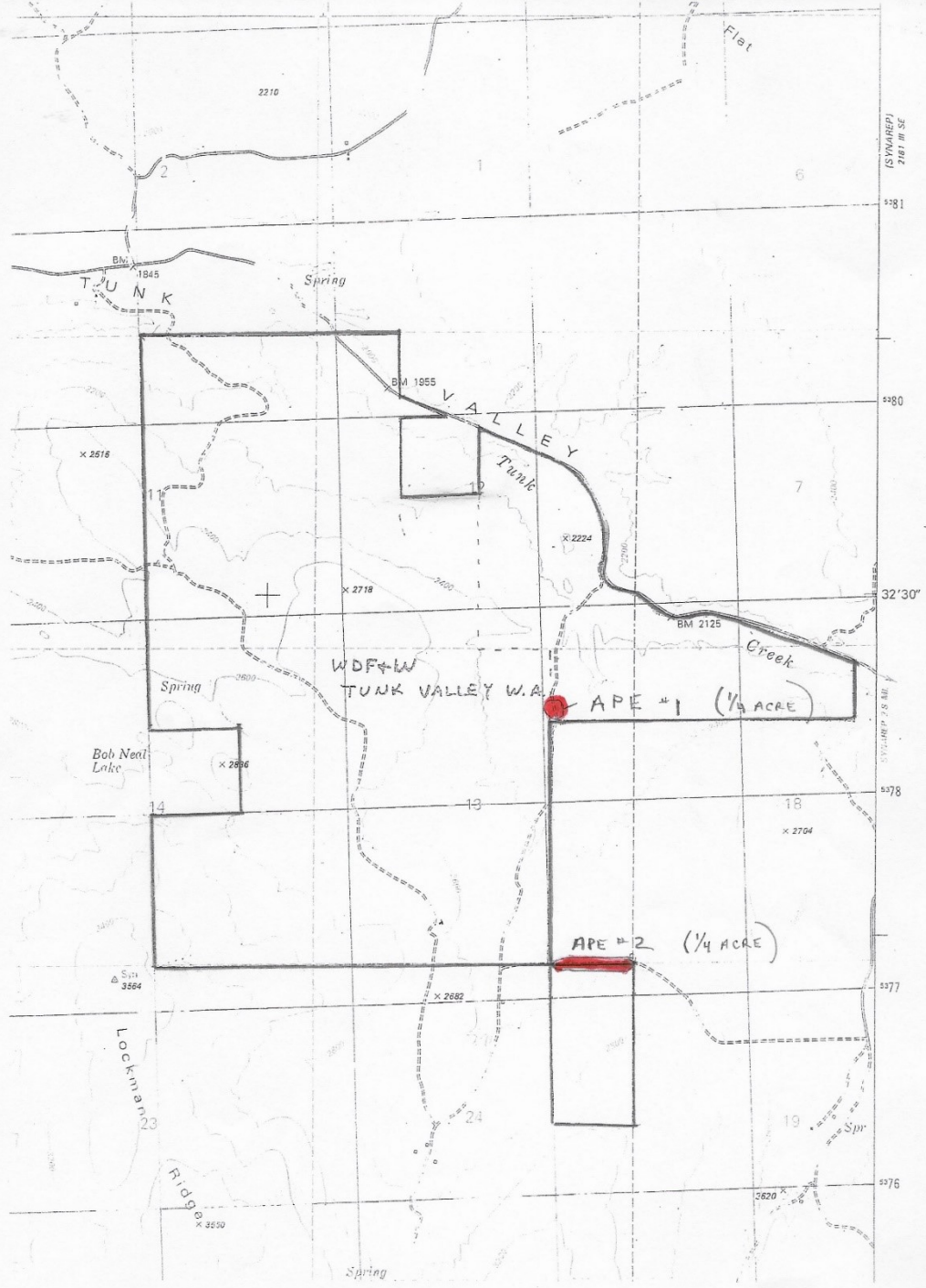
T35 R27E

T35 R28E

Knox Rd

Legend

-  Roads
-  Wildlife Unit Boundary
-  Section line
-  Township line



(SYWAREP)
2187 III SE

5281

5280

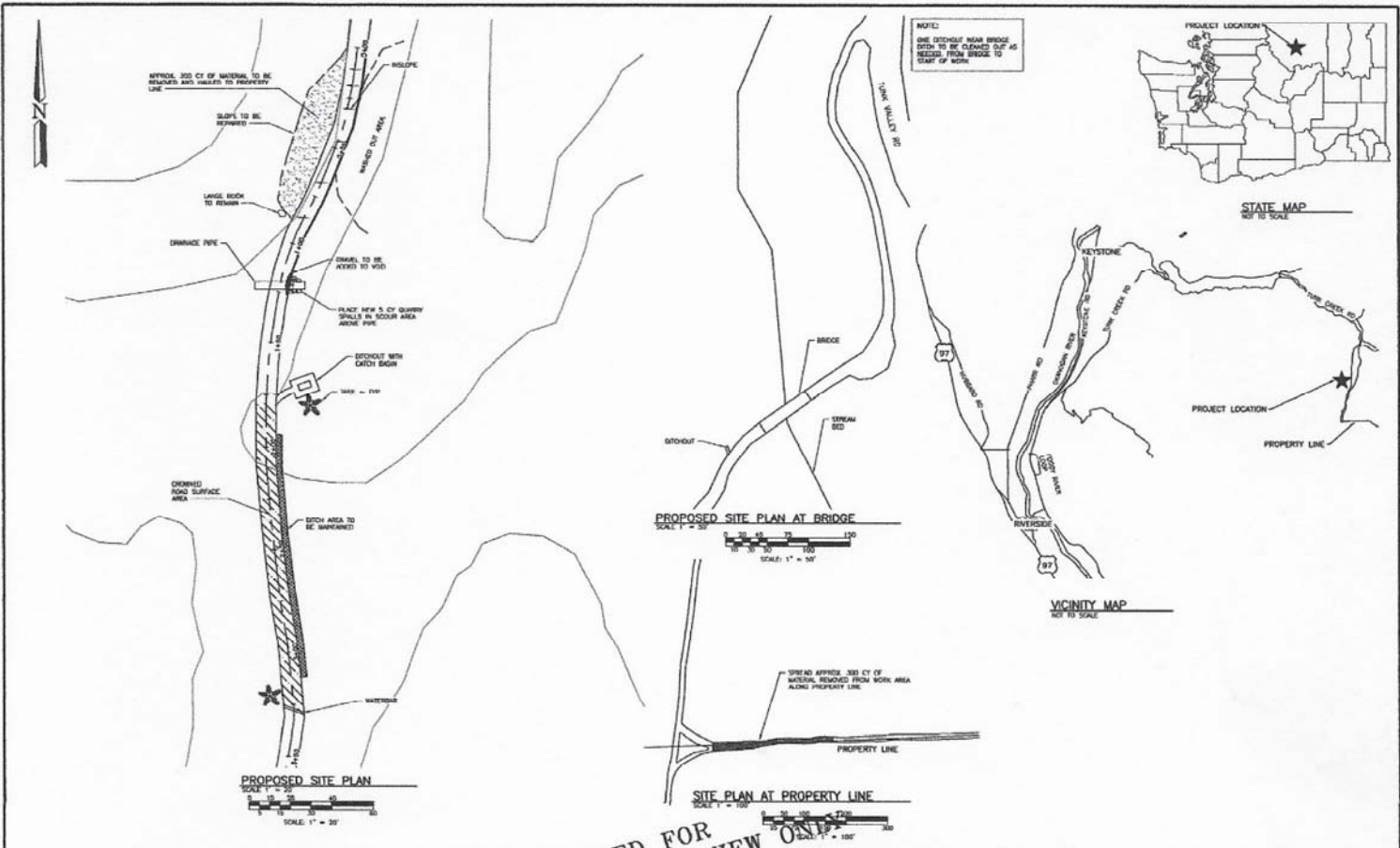
32°30'

5278

5277

5276

(SYWAREP) 2 S. 8. 8. 8.



WASHINGTON DEPARTMENT OF FISH & WILDLIFE	NOT APPROVED FOR CONSTRUCTION. REVIEW ONLY	REVISION DESCRIPTION APPROVED AND RELEASED FOR CONSTRUCTION	0 1" = 100' BAR MEASURES ONE INCH ON 24x36 DRAWINGS	SCOTCH CREEK WLA TUNK VALLEY UNIT ROAD REPAIR PROPOSED SITE PLAN	PROJECT NO. OK-R117-2019-1
		DATE: 04/18/2013 DRAWN BY: S. JENSEN	CHECKED BY: G. SMITH	SHEET 1 OF 2	

