

WELCOME – THANKS FOR JOINING US!

ZOOM MEET/ CALL LOGISTICS / GROUND RULES

- You can turn your camera on and mute or unmute yourself through the control panel at the bottom of your screen.
- We will keep folks muted during the beginning of our program, then will unmute folks when we open it up for questions and feedback. Callers can unmute yourself by pressing *6 on your phone.
- We ask that you “raise your hand” to ask a question which you can access through the control panel at the bottom of the screen. You can also raise your hand by hovering over your face or name on the list of participants. Callers can raise their hand by dialing *9.
- Be respectful of others
 - Mute phone or line
 - Be tough on issues and questions, not on people or organizations
 - No personal attacks, insults or threats
 - Listen
 - Speak and act professionally – *no offensive, disrespectful, or derogatory language, including profanity*
 - Allow for a balance of speaking time – *limit length and number of times to speak on each topic*
- This meeting is being recorded.
- If you have any technical issues during the call, use the chat button and we will help you through those.
Please do not use the chat for questions or comments on the presentation, we will take those live.



2021 North of Falcon Public Meeting Grays Harbor

Link to join meeting via Zoom:

<https://wdfw.wa.gov/get-involved/calendar/event/north-falcon-grays-harbor-fisheries-discussion>



Presentation Overview – Meeting Agenda

- Staff Introductions
- North of Falcon Process
- 2021 Grays Harbor Salmon Forecasts
- 2021 Management Objectives



Staff Introductions

Statewide Salmon Management

Kyle Adicks

Intergovernmental
Salmon Manager



Mark Baltzell

State Salmon and
Steelhead
Manager



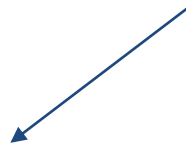
Marlene Wagner

WB/GH Fishery
Policy Lead

Region 6 Director – Larry Phillips

James Losee

Region 6 Fish
Program Manager



Robert Allan

Region 6 Hatchery
Reform/Operations
Manager



Mike Scharpf

Grays Harbor
District Biologist



Kim Figlar-Barnes

Grays Harbor Area
Biologist



Curt Holt

Grays Harbor Area
Biologist



North of Falcon Process



North of Falcon Process

- 1) Forecast the abundance of each stock
- 2) Determine if there is a harvestable surplus
- 3) Model fisheries to determine which stocks are the constraints
- 4) Predict what we will catch
- 5) Depending on the area, negotiate with treaty tribes and other states

We
are
here



2021 Regional North of Falcon Public Meeting

Schedule

All 2021 meetings are being held virtually

| DATE | EVENT |
|---------------------|--|
| Feb. 25 | Willapa Bay and Grays Harbor Forecast Meeting |
| | 6 to 8PM PST. Join Zoom Web Conference |
| Feb 26 | 2021 Salmon Forecasts and Fishing Opportunities |
| | 9AM to 3PM PST. Join Zoom Web Conference |
| March 2-5 & 8-11 | Pacific Fishery Management Council Meeting |
| | View Meeting Agenda |
| March 16 | First North of Falcon Meeting |
| | 9AM to 3PM PST. Join Zoom Web Conference |
| March 17 | North of Falcon: Willapa Bay Fisheries Discussion |
| | 6 to 8PM PST. Join Zoom Web Conference |
| March 23 | PFMC Ocean Management Public Hearing |
| | 7PM PST. Find More Information Here |



2021 Regional North of Falcon Public Meeting Schedule

All 2021 meetings are being held virtually

We are here



| DATE | EVENT |
|------------------------------|---|
| March 24 | North of Falcon: Grays Harbor Fisheries Discussion 6 to 8PM PST. Join Zoom Web Conference |
| March 31 | Second North of Falcon Meeting 9AM to 3PM PST. Join Zoom Web Conference |
| April 5 | North of Falcon: Willapa Bay Fisheries Discussion 6 to 8PM PST. Join Zoom Web Conference |
| April 6 | North of Falcon: Grays Harbor Fisheries Discussion 6 to 8PM PST. Join Zoom Web Conference |
| April 6-9 & 12-15 | Pacific Fishery Management Council Meeting Meeting Agenda |

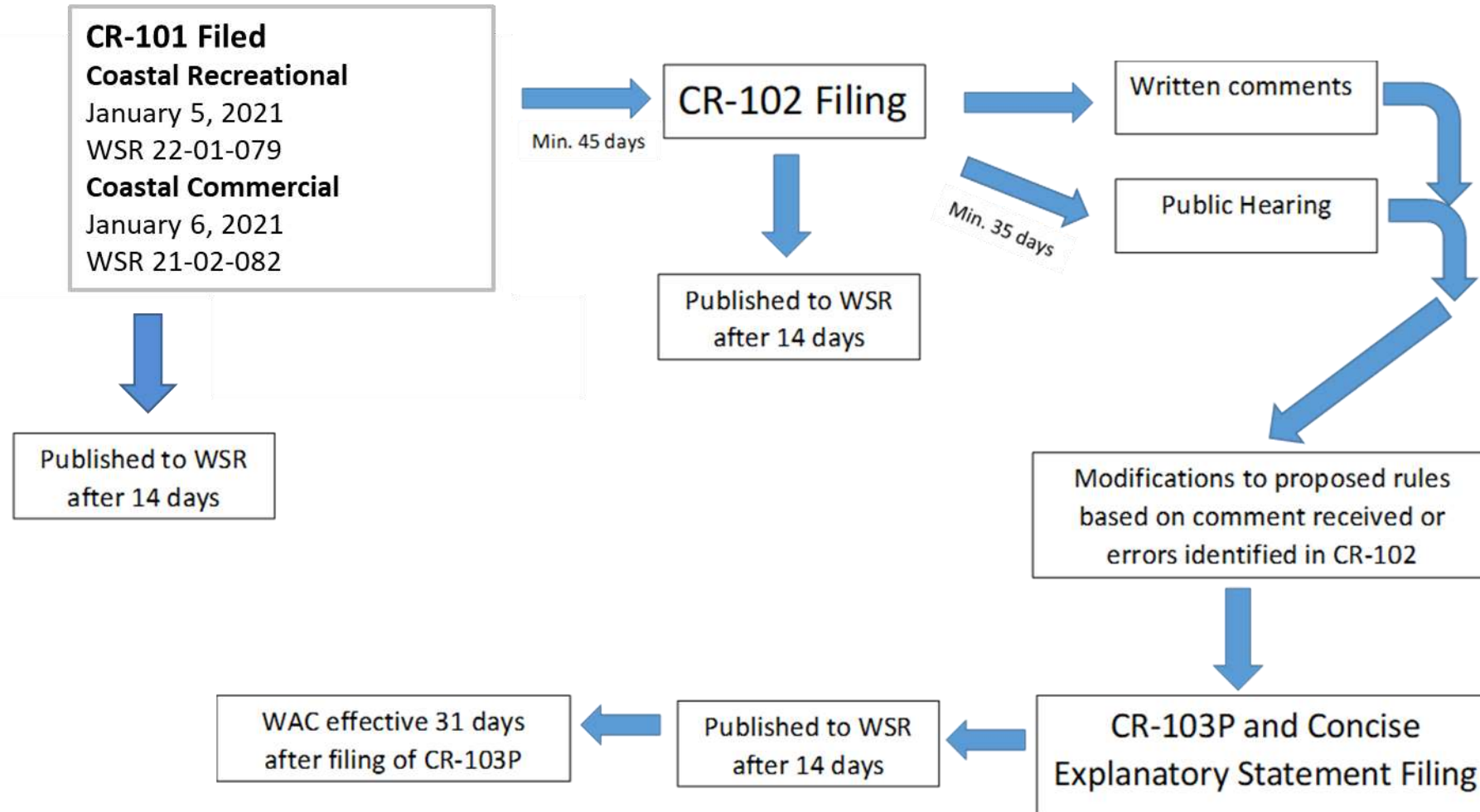
Entire schedule and links to individual meetings can be found here:

<https://wdfw.wa.gov/fishing/management/north-falcon/public-meetings>



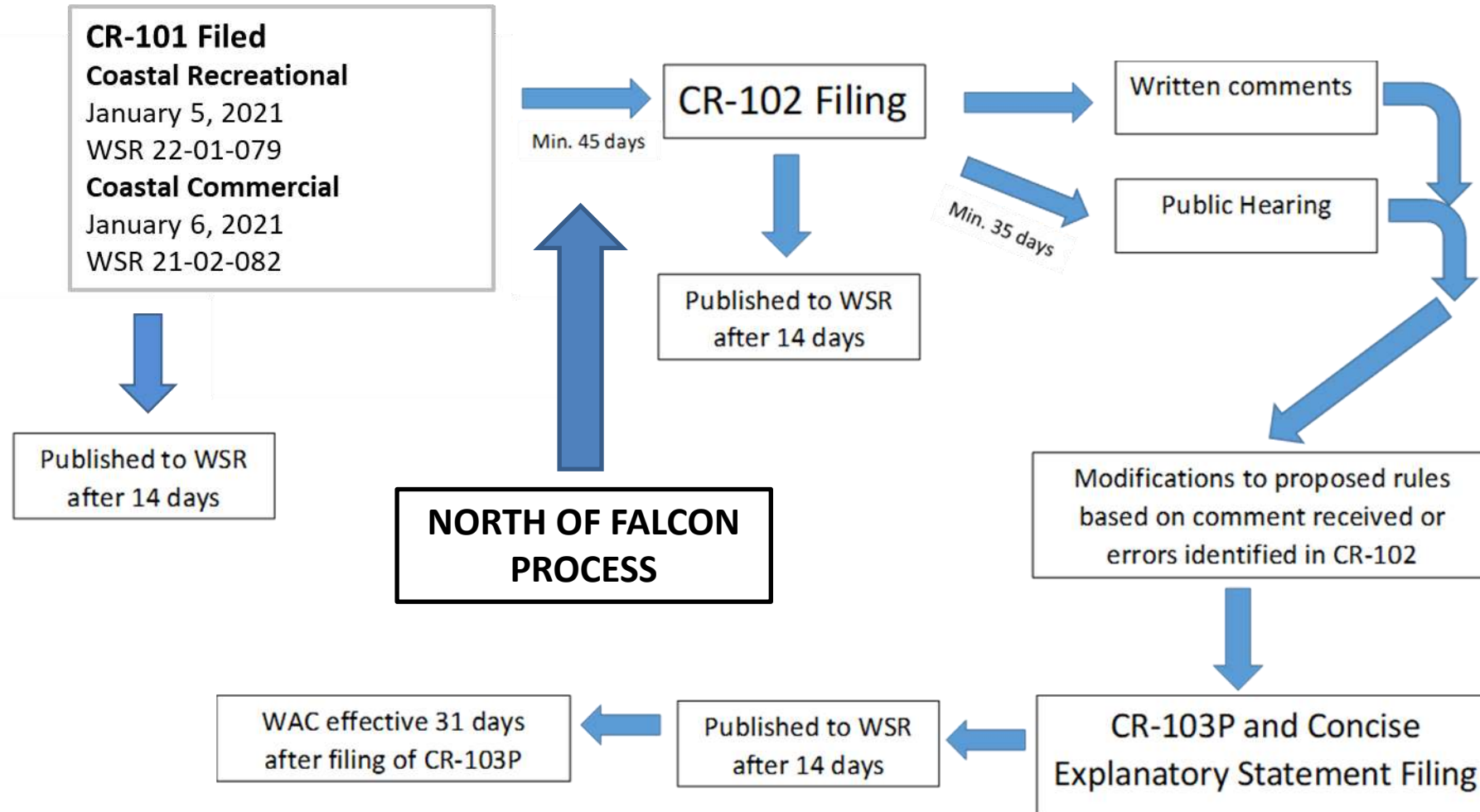
2021 Fishery Rule-making

Administrative Procedure Act Process



2021 Fishery Rule-making

Administrative Procedure Act Process



2021 PFMC Ocean Alternatives

2021 Proposed ocean salmon fishery options for Chinook and Coho from March PFMC meeting

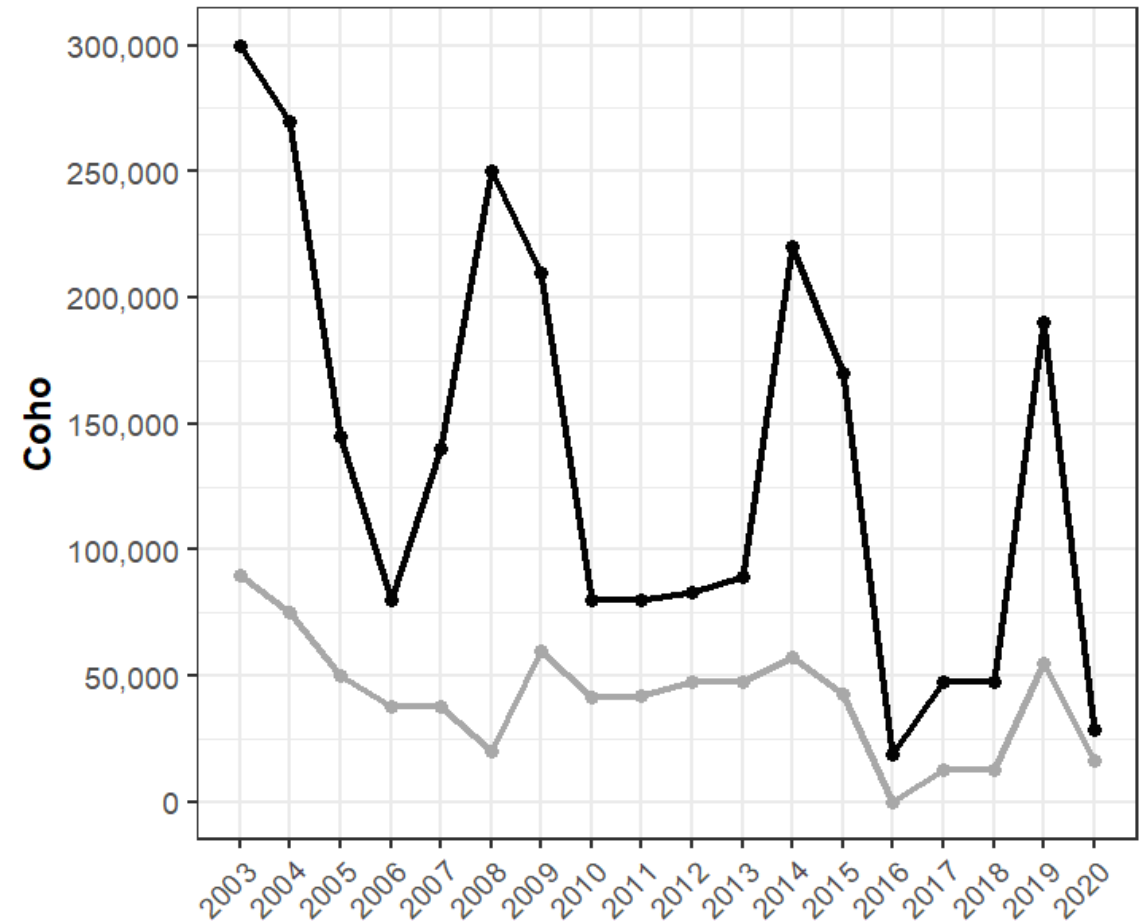
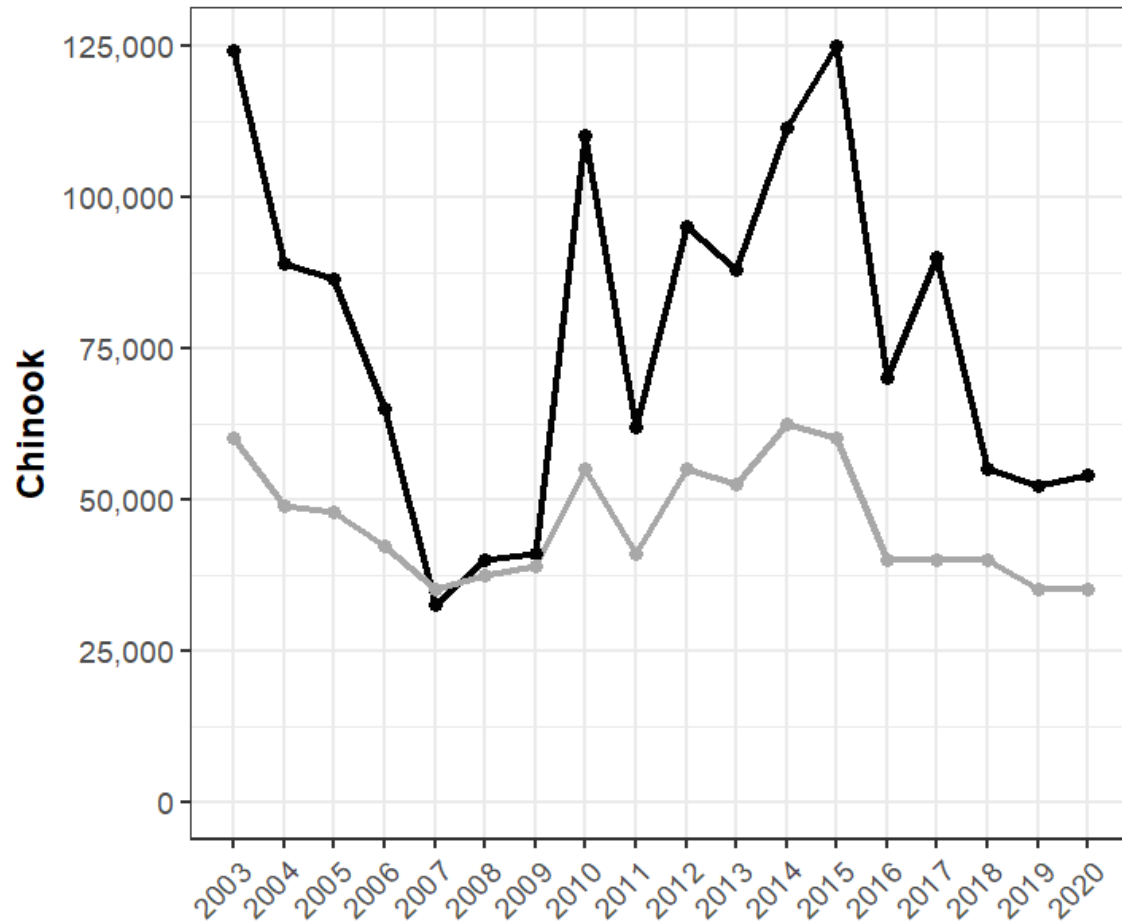
| | Chinook TAC Options | | | Coho TAC Options | | |
|---------------------------------------|----------------------|----------------------|-----------------------|----------------------|------------------------|-----------------------|
| Fishery or Quota Designation | Alt. I – High Option | Alt. II – Mid Option | Alt. III – Low Option | Alt. I – High Option | Alt. II – Mid Option | Alt. III – Low Option |
| NT Commercial Troll (Coho MSF) | 32,000 | 25,000 | Closed | 4,800 | 14,400 | Closed |
| Recreational (Coho MSF) | 28,000 | 25,000 | Closed | 75,200 | 95,600 | Closed |
| NT Total | 60,000 | 50,000 | Closed | 80,000 | 110,000 (90K + 20K) | Closed |

TAC = Total Allowable Catch; NT = Non-treaty; MSF = Mark Selective Fishery



Ocean Quotas

Marine Areas 1-4 Annual Ocean Quotas



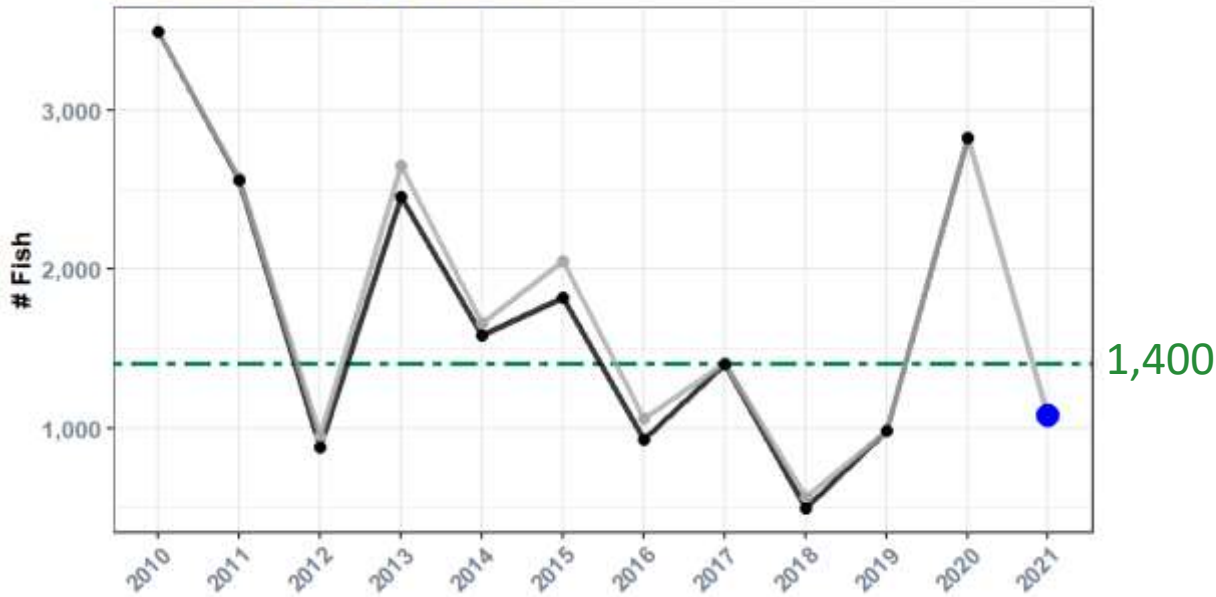
◆ Non-treaty ◆ Treaty



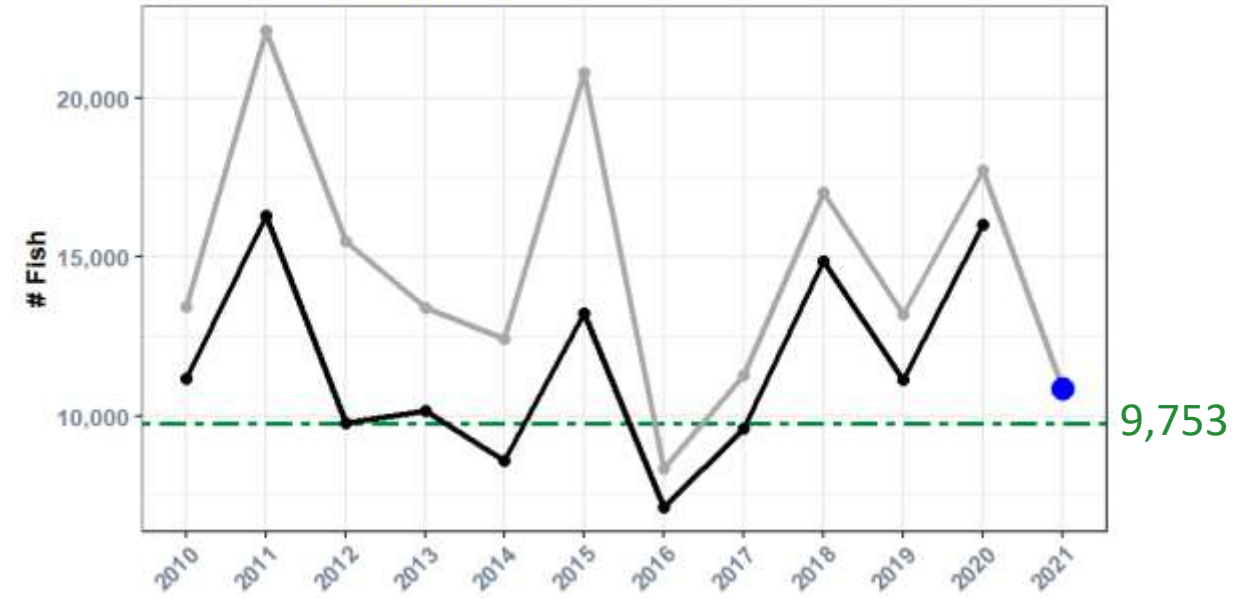
Recent Grays Harbor Trends

- Escapement
- Run Size
- Escapement goal
- Predicted

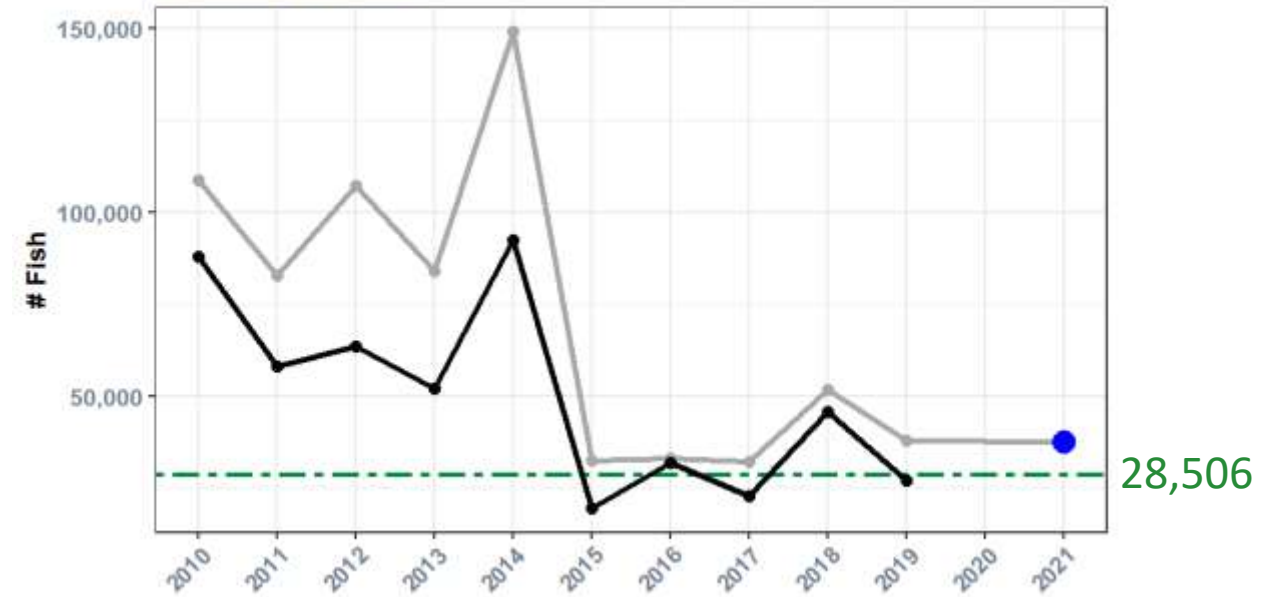
Chehalis Spring Chinook



Chehalis Fall Chinook



Chehalis Coho



2021 Grays Harbor Forecasts

Chehalis Basin

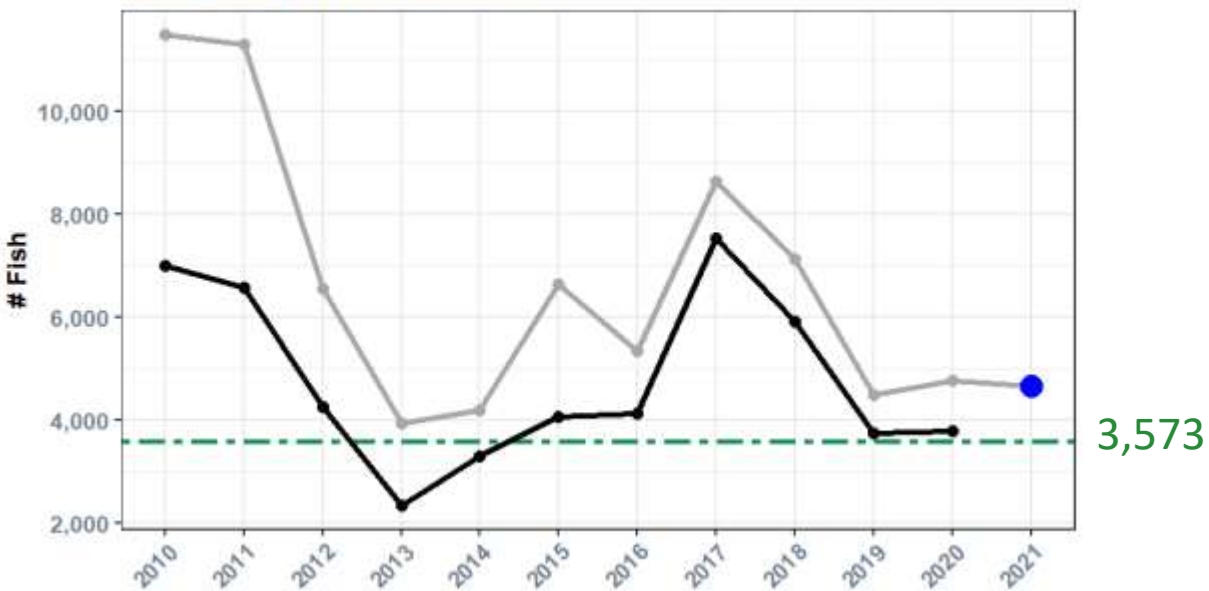
| Species | Natural | Hatchery | Total |
|--|---------|----------|--------|
| Spring Chinook | 1,082 | --- | 1,082 |
| Fall Chinook | 10,852 | 1,862 | 12,714 |
| Coho (incl. South Bay) <i>Ocean Age 3 Forecasts</i> | 42,324 | 23,801 | 66,125 |



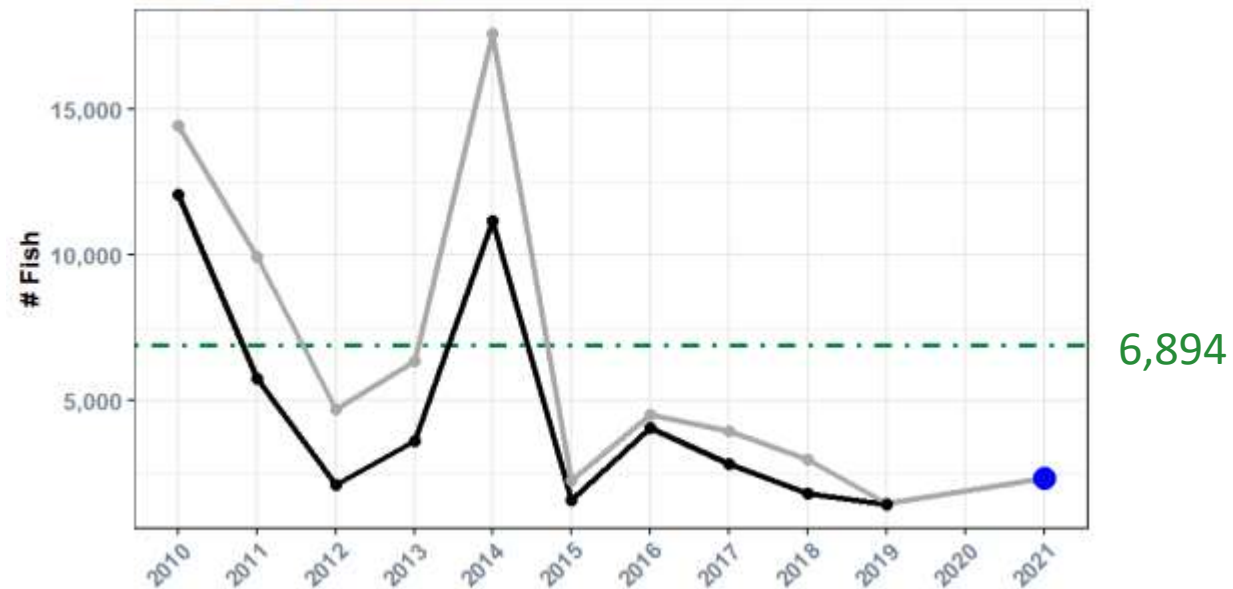
Recent Grays Harbor Trends

- Escapement
- Run Size
- Escapement goal
- Predicted

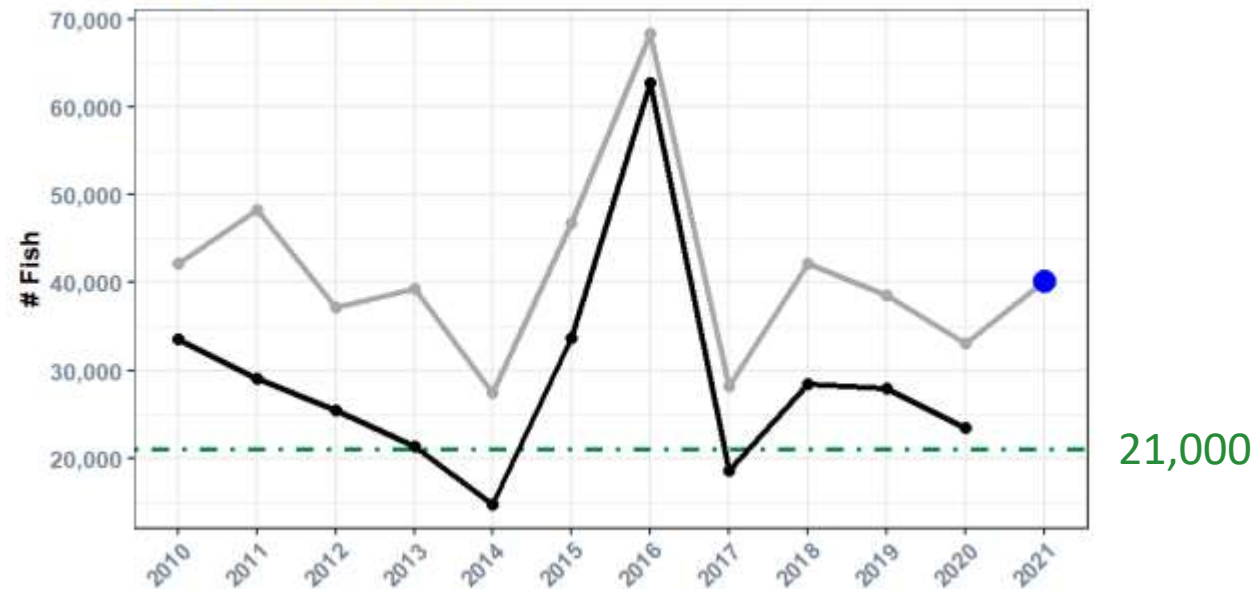
Humptulips Fall Chinook



Humptulips Coho



Grays Harbor Chum



2021 Grays Harbor Forecasts

Humptulips Basin

| Species | Natural | Hatchery | Total |
|---|---------|----------|--------|
| Fall Chinook | 4,668 | 5,696 | 10,364 |
| Coho <i>Ocean Age 3 Forecasts</i> | 2,519 | 7,874 | 10,394 |

Grays Harbor

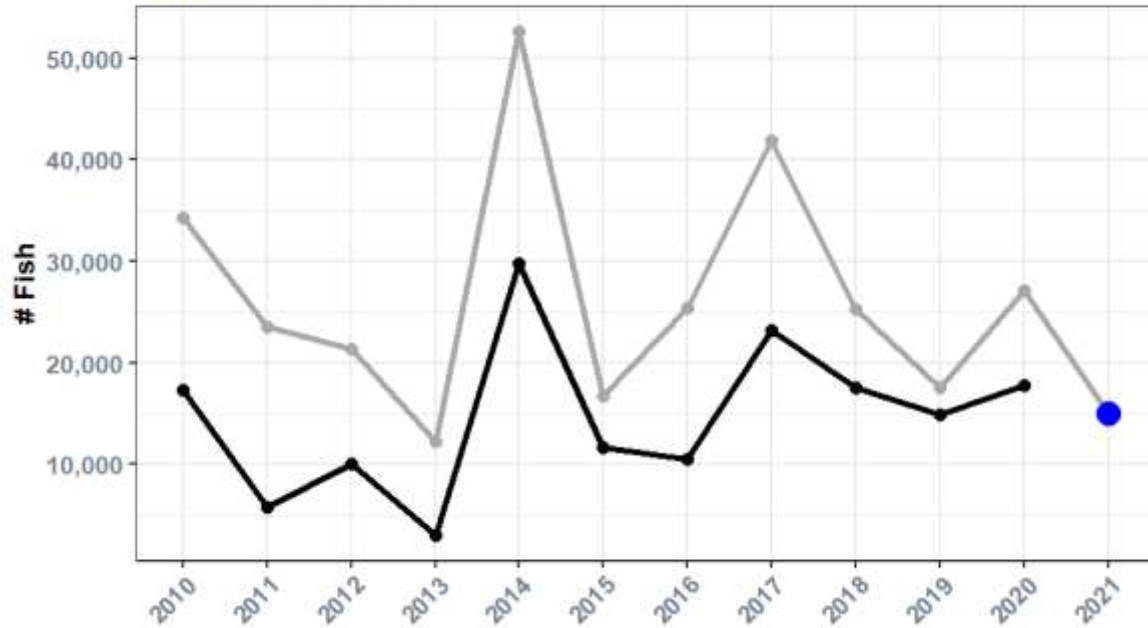
| | | | |
|-------------|--------|-------|--------|
| Chum | 40,138 | 2,110 | 42,248 |
|-------------|--------|-------|--------|



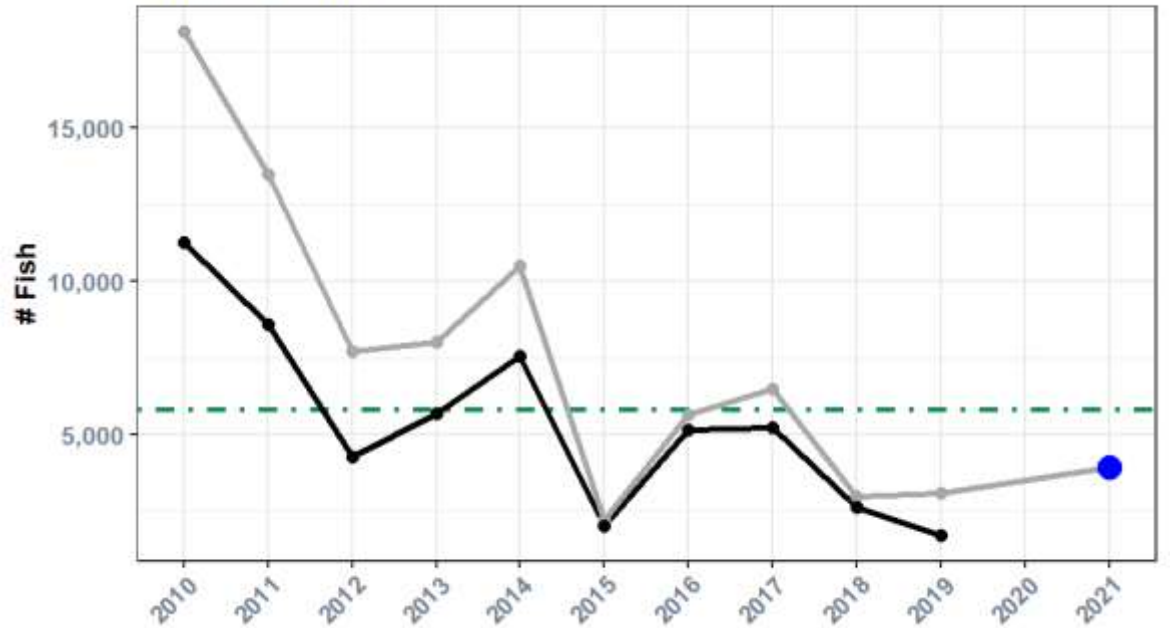
Recent North Coast Trends

● Escapement
 ● Run Size
 ● Predicted

Quinault Coho



Queets Coho



2021 North Coast Coho Forecasts

| Basin | Natural | Hatchery | Total |
|---|---------|----------|--------|
| Quinault River <i>Ocean Age 3 Forecasts</i> | 15,005 | 24,645 | 39,650 |
| Queets River <i>Ocean Age 3 Forecasts</i> | 3,919 | 11,780 | 15,699 |



2021 Management Objectives

- No Chehalis Spring Chinook fishery
- Humptulips Coho – 5% impact rate cap
- Chehalis Coho – missed escapement goal 3 of the last 5 years
 - 5% impact rate cap
 - limitations similar to 2018
- All other stocks managed for escapement goals
 - Humptulips Chinook
 - Chehalis Fall Chinook
 - Grays Harbor Chum



Questions?



**Link to submit NOF-related
Public comments
electronically:**
[https://wdfw.wa.gov/fishing/
management/north-falcon](https://wdfw.wa.gov/fishing/management/north-falcon)

**Address to join our Grays
Harbor distribution list:**
GraysHarbor@dfw.wa.gov



| CHEHALIS RIVER BASIN | | | | | | |
|---|----------------|---------------|---------------|---------------|---------------|---------------|
| | Chinook | | | Coho | | |
| | Natural | Hatchery | Total | Natural | Hatchery | Total |
| | 10,852 | 1,862 | 12,714 | 40,123 | 21,555 | 61,678 |
| Escapement Goals | 9,753 | 578 | 10,331 | 28,506 | 1,500 | 30,006 |
| Total Available Harvestable | 1,099 | 1,284 | 2,383 | 11,617 | 20,055 | 31,672 |
| Non-treaty Share | 550 | 642 | 1,192 | 5,809 | 10,028 | 15,836 |
| Chehalis River Management Objectives | | | | | | |
| Proportion of Rec Marine Area 2.2 | 27% | | | 35% | | |
| Commercial Impact Rate in 2A-D Only | 0.8% | | | | | |
| Total WDFW-managed fishery | | | | 5% | | |
| Harvest Impacts | | | | | | |
| WDFW-managed fishery Harvest | 254 | 71 | 325 | 4,101 | 2,467 | 6,567 |
| Marine Area 2.2 Harvest | 76 | 19 | 95 | 580 | 306 | 886 |
| Freshwater Harvest | 161 | 43 | 204 | 2,894 | 1,824 | 4,717 |
| Commercial Harvest (Area 2A, 2D) | 17 | 10 | 27 | 627 | 337 | 965 |
| Chehalis Tribal Harvest | 92 | 0 | 92 | 251 | 857 | 1,108 |
| QIN Treaty Harvest | 1,007 | 173 | 1,180 | 4,136 | 2,327 | 6,463 |
| Total Chehalis Basin Harvest | 1,354 | 244 | 1,598 | 8,488 | 5,651 | 14,139 |
| Expected Escapement | 9,498 | 1,618 | 11,116 | 31,635 | 15,904 | 47,540 |
| Harvest Rates | | | | | | |
| WDFW-managed fishery Harvest Rate | 2.34% | 3.82% | 2.56% | 10.22% | 11.44% | 10.65% |
| Total Recreational harvest rate | 2.19% | 3.29% | 2.35% | 8.66% | 9.88% | 9.08% |
| Proportion of Rec Marine Area 2.2 | 32.00% | 30.44% | 31.68% | 16.69% | 14.37% | 15.81% |
| Proportion of Rec Freshwater | 68.00% | 69.56% | 68.32% | 83.31% | 85.63% | 84.19% |
| Commercial Impact Rate in 2A-D only | 0.16% | | | | | |
| Commercial harvest rate | 0.16% | 0.53% | 0.21% | 1.56% | 1.56% | 1.56% |
| Chehalis Tribal harvest rate | 0.85% | 0.00% | 0.73% | 0.63% | 3.98% | 1.80% |
| QIN Treaty Harvest Rate | 9.28% | 9.29% | 9.28% | 10.31% | 10.80% | 10.48% |
| Total Chehalis Basin Harvest Rate | 12.47% | 13.11% | 12.57% | 21.15% | 26.21% | 22.92% |



| HUMPTULIPS RIVER BASIN | | | | | | |
|---|----------------|---------------|---------------|---------------|---------------|---------------|
| | Chinook | | | Coho | | |
| | Natural | Hatchery | Total | Natural | Hatchery | Total |
| | 4,668 | 5,696 | 10,364 | 2,388 | 7,101 | 9,489 |
| Escapement Goal | 3,573 | 369 | 3,942 | 6,894 | 400 | 7,294 |
| Total Available Harvestable | 1,095 | 5,327 | 6,422 | -4,506 | 6,701 | 2,195 |
| Non-treaty Share | 548 | 2,664 | 3,211 | -2,253 | 3,350 | 1,098 |
| Humptulips River Management Objectives | | | | | | |
| Marine Area 2.2 impact rate | 26% | | | 18% | | |
| Commercial impact rate in 2C Only | 1.2% | | | | | |
| Total Impacts | | | | < 5% | | |
| Harvest Impacts | | | | | | |
| WDFW-managed fishery Harvest | 139 | 2,258 | 2,397 | 58 | 1,032 | 1,091 |
| Marine Area 2.2 Harvest | 4 | 90 | 95 | 7 | 84 | 91 |
| Freshwater Harvest | 134 | 2,166 | 2,299 | 44 | 927 | 971 |
| Commercial Harvest | 1 | 2 | 3 | 7 | 21 | 28 |
| QIN Treaty Harvest | 614 | 749 | 1,363 | 465 | 1,455 | 1,920 |
| Total Humptulips Basin Harvest | 753 | 3,007 | 3,760 | 523 | 2,487 | 3,011 |
| Expected Escapement | 3,915 | 2,689 | 6,604 | 1,865 | 4,613 | 6,479 |
| Harvest Rates | | | | | | |
| WDFW-managed fishery Harvest Rate | 2.98% | 39.64% | 23.13% | 2.43% | 14.54% | 11.49% |
| Total Recreational harvest rate | 2.96% | 39.61% | 23.10% | 2.13% | 14.24% | 11.19% |
| Proportion of Rec Marine Area 2.2 | 3.22% | 4.01% | 3.97% | 13.16% | 8.33% | 8.57% |
| Proportion of Rec Freshwater | 96.78% | 95.99% | 96.03% | 86.84% | 91.67% | 91.43% |
| Commercial harvest rate in 2C Only | 0.00% | | | | | |
| Commercial harvest rate | 0.02% | 0.03% | 0.03% | 0.30% | 0.30% | 0.30% |
| QIN Treaty Harvest Rate | 13.15% | 13.15% | 13.15% | 19.47% | 20.49% | 20.23% |
| Total Harvest Rate | 16.13% | 52.79% | 36.28% | 21.90% | 35.03% | 31.73% |



| GRAYS HARBOR TOTAL | | | | | | | | | |
|-------------------------------------|---------------|---------------|---------------|---------------|---------------|---------------|---------|----------|---------------|
| | Chinook | | | Coho | | | Chum | | |
| | Natural | Hatchery | Total | Natural | Hatchery | Total | Natural | Hatchery | Total |
| | 15,520 | 7,558 | 23,078 | 42,512 | 28,656 | 71,168 | 30,324 | 2,325 | 42,248 |
| Escapement Goal | 13,326 | 947 | 14,273 | 35,400 | 1,900 | 37,300 | | | 21,000 |
| Total Available Harvestable | 2,194 | 6,611 | 8,805 | 7,112 | 26,756 | 33,868 | | | 21,248 |
| Non-treaty Share | 1,097 | 3,306 | 4,403 | 3,556 | 13,378 | 16,934 | | | 10,624 |
| Management Objectives | | | | | | | | | |
| Marine Area 2.2 impact rate | | | | | | | | | ≤ 2% total |
| Commercial impact rate | | | | | | | | | |
| Total Impacts | | | | ≤ 5% | | | | | |
| Harvest Impacts | | | | | | | | | |
| WDFW-managed fishery Harvest | 393 | 2,329 | 2,723 | 4,159 | 3,499 | 7,658 | | | 4,027 |
| Marine Area 2.2 Harvest | 80 | 109 | 190 | 586 | 390 | 977 | | | 33 |
| Freshwater Harvest | 295 | 2,208 | 2,503 | 2,938 | 2,751 | 5,688 | | | 773 |
| Commercial Harvest | 18 | 12 | 30 | 635 | 358 | 993 | | | 3,222 |
| <i>Chehalis Tribe</i> | 92 | 0 | 92 | 251 | 857 | 1,108 | | | 0 |
| <i>Total NT - Harvest</i> | 486 | 2,329 | 2,815 | 4,410 | 4,356 | 8,766 | | | 4,027 |
| QIN Treaty Harvest | 1,621 | 922 | 2,543 | 4,601 | 3,782 | 8,383 | | | 3,765 |
| Total GH Harvest | 2,107 | 3,251 | 5,358 | 9,011 | 8,138 | 17,149 | | | 7,792 |
| Expected Escapement | 13,413 | 4,307 | 17,720 | 33,501 | 20,518 | 54,018 | | | 34,456 |
| Harvest Rates | | | | | | | | | |
| Non-treaty Harvest Rate | 2.54% | 30.82% | 11.80% | 9.78% | 12.21% | 10.76% | | | 9.53% |
| Proportion of Rec Marine Area 2.2 | | | | | | | | | 4.10% |
| Marine Area 2.2 harvest rate | 0.52% | 1.44% | 0.82% | 1.38% | 1.36% | 1.37% | | | 0.08% |
| Freshwater harvest rate | 1.90% | 29.22% | 10.85% | 6.91% | 9.60% | 7.99% | | | 1.83% |
| Commercial harvest rate | 0.12% | 0.16% | 0.13% | 1.49% | 1.25% | 1.40% | | | 7.63% |
| QIN Treaty Harvest Rate | 10.44% | 12.20% | 11.02% | 10.82% | 13.20% | 11.78% | | | 8.91% |
| Total GH Harvest Rate | 13.57% | 43.01% | 23.22% | 21.20% | 28.40% | 24.10% | | | 18.44% |



2021 Grays Harbor NOF Fishery Suggestions or Comments Received from the Public

As of March 25, 2021

Fishery conservation restrictive fishing – model terminal fisheries similar to ocean, lose 2 days a week of fishing rather than all days in a row.

Should be allowed to retain hatchery Chinook and coho. Focus on hatchery coho & chum. Conserve wild coho & Chinook.

Spring Chinook conservation – will the entire river be shut down? Will there be other restriction for more targeted approach? No need to close everything the entire time, upper basin recreational fishers should bear most of the conservation.

Increase coho jack limit in the Chehalis River (mouth of Satsop to S. Montesano) to 12 per day. Extend the coho jack season to Sept. 30.

Mark-selective coho Sept. 15 to Nov. 30

2021 Grays Harbor NOF Fishery Suggestions or Comments Received from the Public As of March 25, 2021, continued

Reduce coho impacts by 20% try weekly Wed. to Sun. recreational fishery with Mon. & Tues. closure, includes marine and freshwater.

If not in 3/5 box with coho; recreational fishery with one adult limit Sept. 15 to Nov. 30 with possible shortened fishery by one or two days per week.

No Chinook retention

Commercial Non-treaty

Chehalis 2A/D 8 days

| | |
|------------|----------------|
| Tangle net | WK 41 – 1 day |
| Tangle net | WK 42 – 1 day |
| Gillnet | WK 43 – 3 days |
| Gillnet | WK 44 – 3 days |

Fisheries Suggestions & Questions



**Link to submit NOF-related
Public comments
electronically:**

[https://wdfw.wa.gov/fishing/
management/north-falcon](https://wdfw.wa.gov/fishing/management/north-falcon)

**Address to join our Grays
Harbor distribution list:**

GraysHarbor@dfw.wa.gov

