

# 2021 North of Falcon Public Meeting Willapa Bay

Link to join meeting via Zoom:

<https://wdfw.wa.gov/get-involved/calendar/event/north-falcon-willapa-bay-fisheries-discussion>



# Presentation Overview – Meeting Agenda

- Meeting Purpose
- Staff Introductions
- North of Falcon Process
- 2021 Willapa Bay Salmon Forecasts
- 2021 Management Objectives



# Meeting Purpose

- Prepare for 2021 North of Falcon Process
- Provide information needed to engage with meaningful input
- Answer questions about the information
- Solicit input for fisheries modeling



# Staff Introductions

## Statewide Salmon Management

**Kyle Adicks**

Intergovernmental  
Salmon Manager



**Mark Baltzell**

State Salmon and  
Steelhead  
Manager



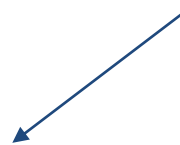
**Marlene Wagner**

WB/GH Fishery  
Policy Lead

## Region 6 Director – Larry Phillips

**James Losee**

Region 6 Fish  
Program Manager



**Robert Allan**

Region 6 Hatchery  
Reform/Operations  
Manager



**Jody Pope**

Willapa Bay District  
Biologist



**Barbara McClellan**

Willapa Bay Area  
Biologist



**Lyle Jennings**

Willapa Bay Area  
Biologist

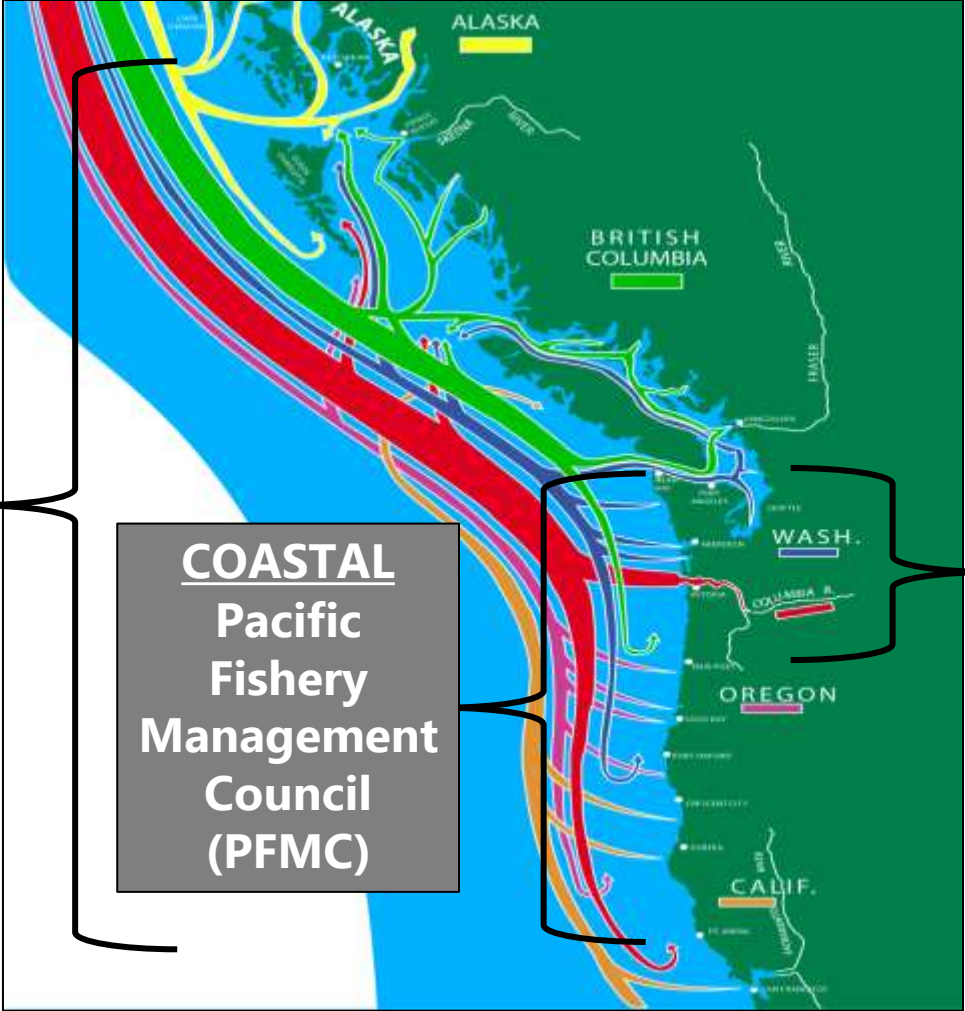


# North of Falcon Process

**INTERNATIONAL  
Pacific Salmon  
Commission  
(PSC)**

**COASTAL  
Pacific  
Fishery  
Management  
Council  
(PFMC)**

**INSIDE WATERS  
WDFW, ODFW,  
Tribes (NOF)**



# North of Falcon Process

- 1) Forecast the abundance of each stock
- 2) Determine if there is a harvestable surplus
- 3) Model fisheries to determine which stocks are the constraints
- 4) Predict what we will catch
- 5) Depending on the area, negotiate with treaty tribes and other states

We  
are  
here



# 2021 North of Falcon Public Meeting Schedule

**All 2021 meetings are being held virtually**

DATE	EVENT
Feb. 25	<b>Willapa Bay and Grays Harbor Forecast Meeting</b>
	6 to 8PM PST. <a href="#">Join Zoom Web Conference</a>
Feb 26	<b>2021 Salmon Forecasts and Fishing Opportunities</b>
	9AM to 3PM PST. <a href="#">Join Zoom Web Conference</a>
March 2-5 & 8-11	<b>Pacific Fishery Management Council Meeting</b>
	<a href="#">View Meeting Agenda</a>
March 16	<b>First North of Falcon Meeting</b>
	9AM to 3PM PST. <a href="#">Join Zoom Web Conference</a>
March 17	<b>North of Falcon: Willapa Bay Fisheries Discussion</b>
	6 to 8PM PST. <a href="#">Join Zoom Web Conference</a>
March 23	<b>PFMC Ocean Management Public Hearing</b>
	7PM PST. <a href="#">Find More Information Here</a>

We  
are  
here



# 2021 North of Falcon Public Meeting Schedule

**All 2021 meetings are being held virtually**

DATE	EVENT
<b>March 24</b>	<b>North of Falcon: Grays Harbor Fisheries Discussion</b>
	6 to 8PM PST. <a href="#">Join Zoom Web Conference</a>
<b>March 31</b>	<b>Second North of Falcon Meeting</b>
	9AM to 3PM PST. <a href="#">Join Zoom Web Conference</a>
<b>April 5</b>	<b>North of Falcon: Willapa Bay Fisheries Discussion</b>
	6 to 8PM PST. <a href="#">Join Zoom Web Conference</a>
<b>April 6</b>	<b>North of Falcon: Grays Harbor Fisheries Discussion</b>
	6 to 8PM PST. <a href="#">Join Zoom Web Conference</a>
<b>April 6-9 &amp; 12-15</b>	<b>Pacific Fishery Management Council Meeting</b>
	<a href="#">Meeting Agenda</a>

Entire schedule and links to individual meetings can be found here:

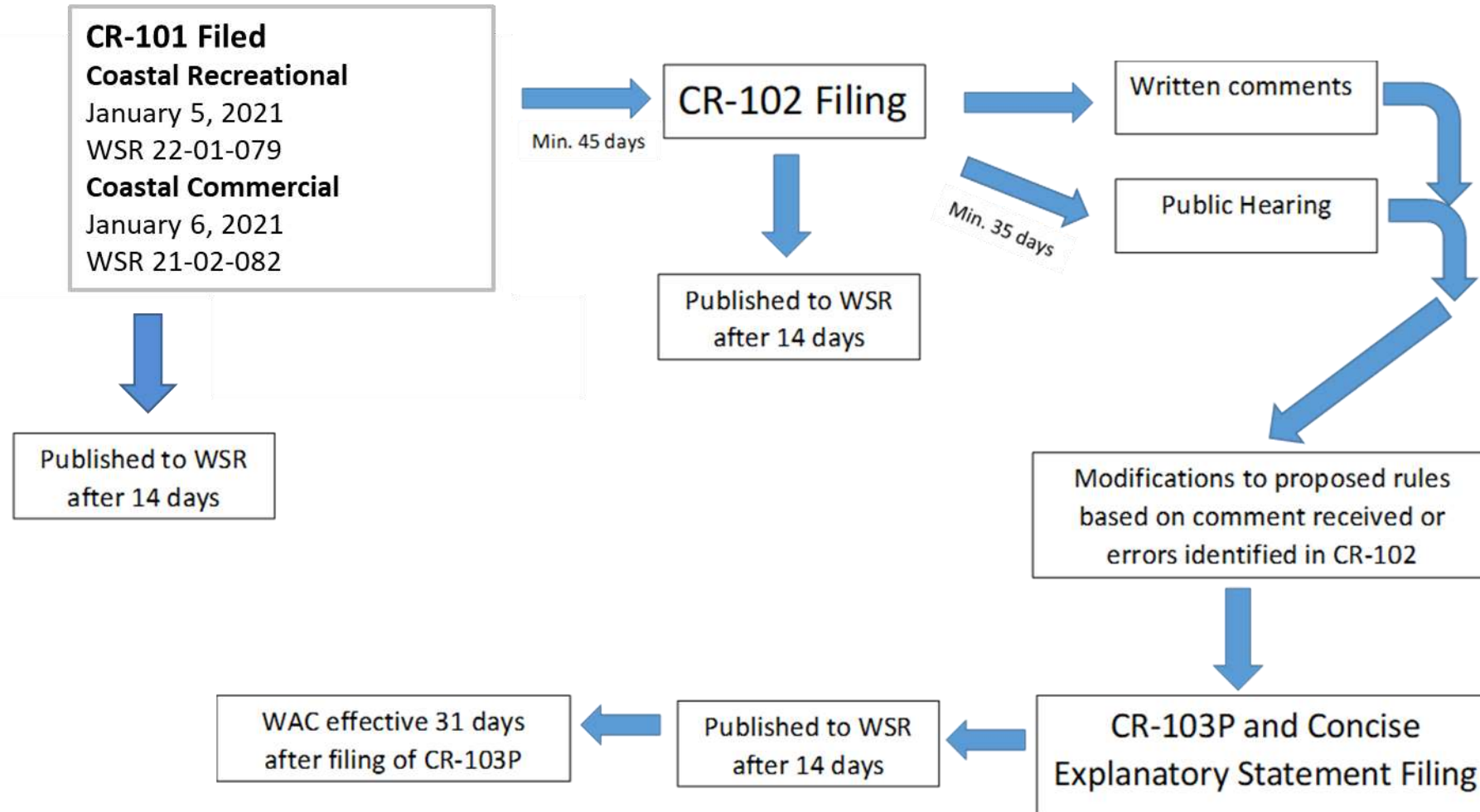
<https://wdfw.wa.gov/fishing/management/north-falcon/public-meetings>





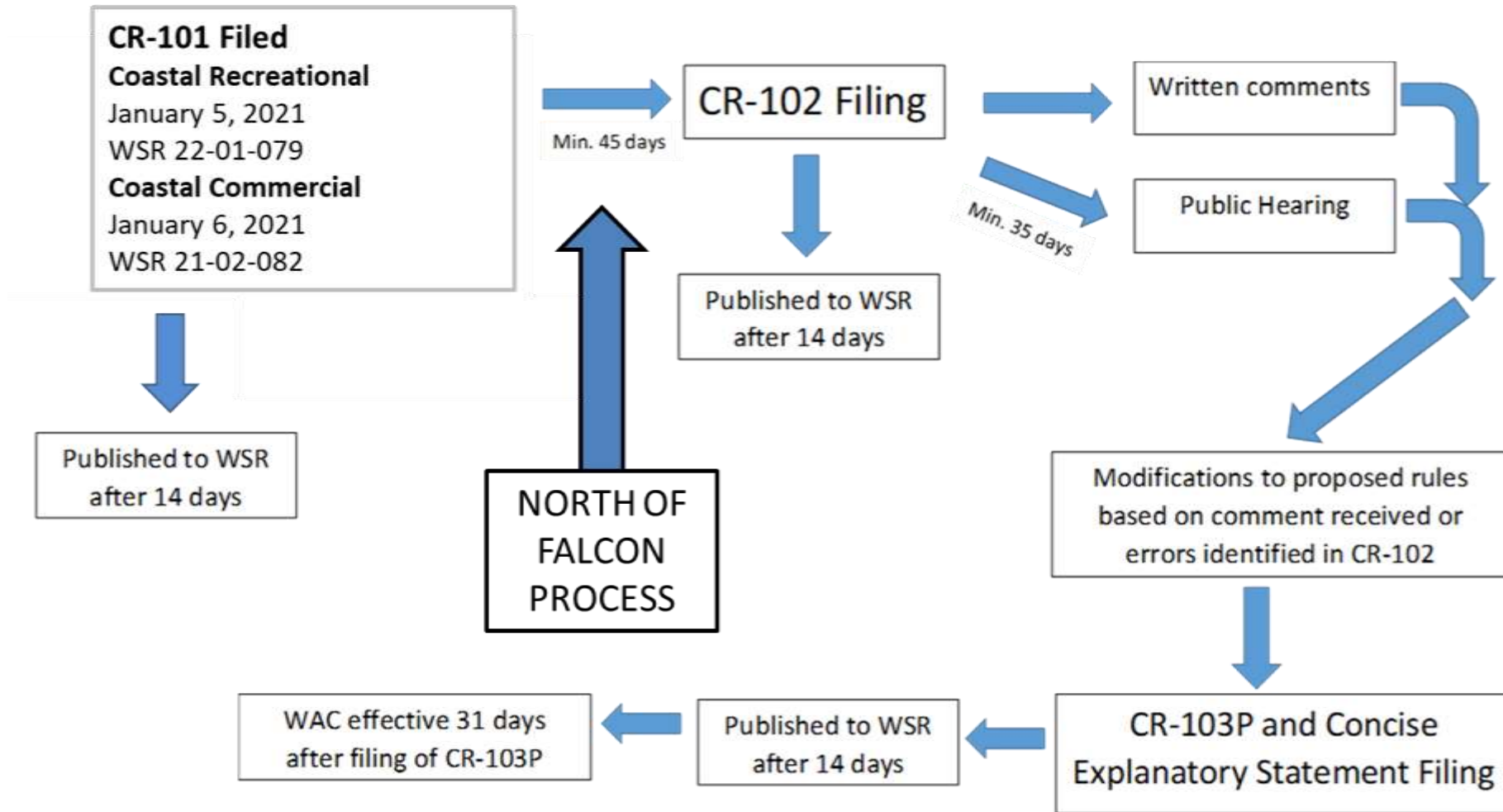
# 2021 Fishery Rule-making

## Administrative Procedure Act Process



# 2021 Fishery Rule-making

## Administrative Procedure Act Process



# 2021 PFMC Ocean Alternatives

## 2021 Proposed ocean salmon fishery options for Chinook and Coho from March PFMC meeting

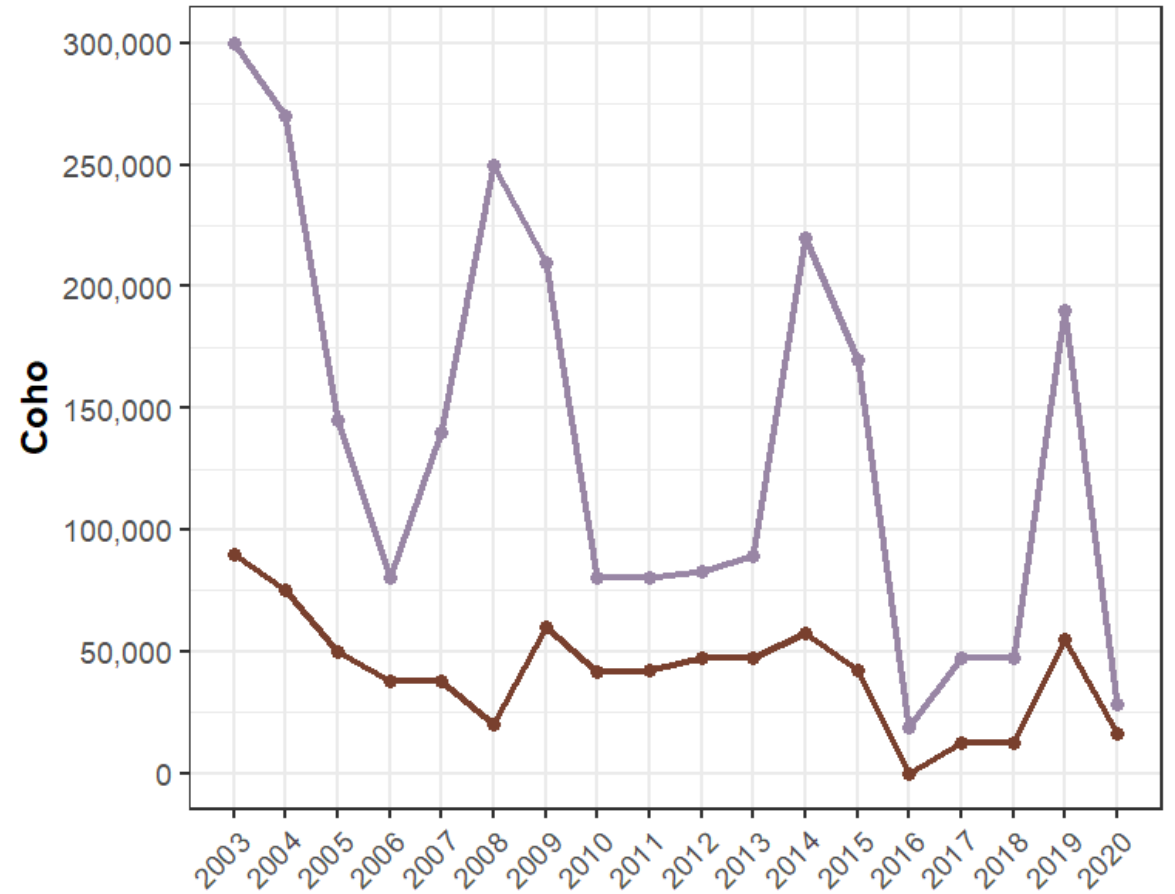
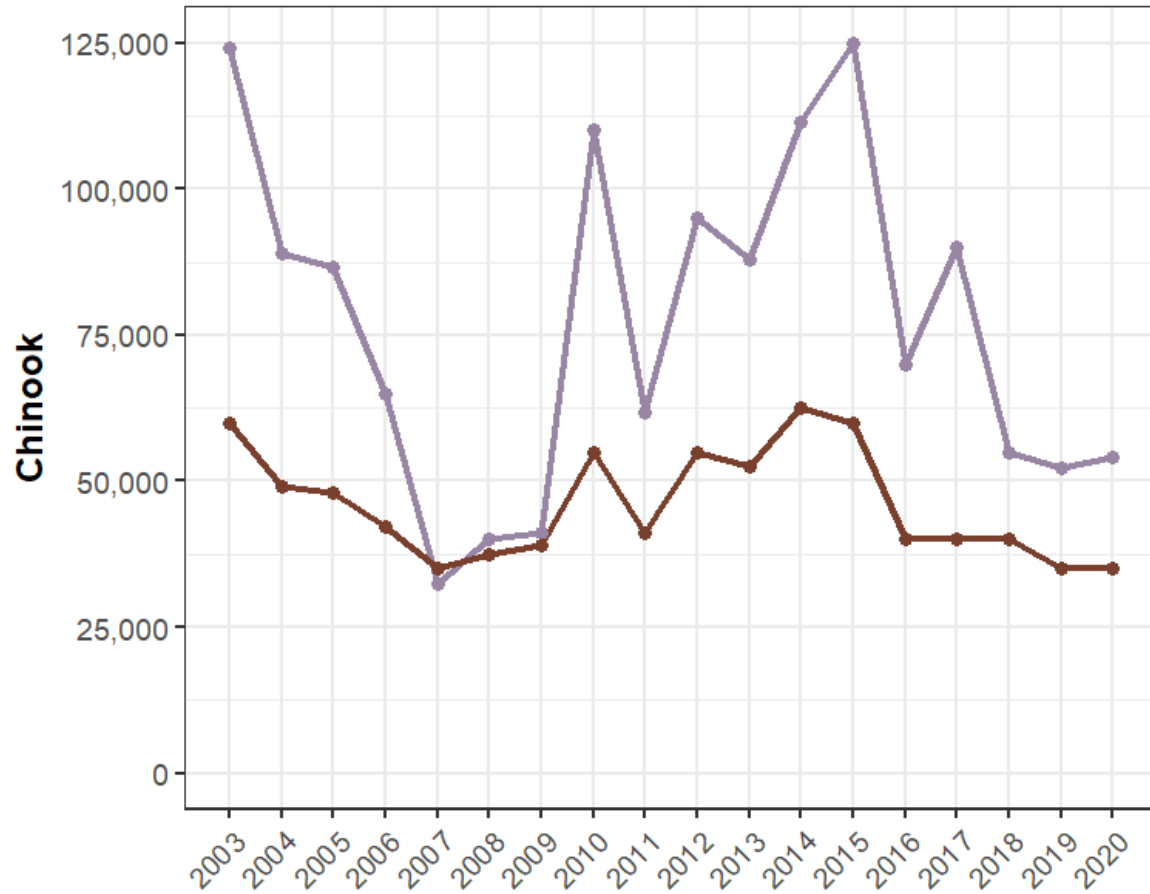
	Chinook TAC Options			Coho TAC Options		
Fishery or Quota Designation	Alt. I – High Option	Alt. II – Mid Option	Alt. III – Low Option	Alt. I – High Option	Alt. II – Mid Option	Alt. III – Low Option
<b>NT Commercial Troll (Coho MSF)</b>	32,000	25,000	0	4,800	14,400	0
<b>Recreational (Coho MSF)</b>	28,000	25,000	0	75,200	95,600	0
<b>NT Total</b>	60,000	50,000	0	80,000	110,000 (90K + 20K)	0

*TAC = Total Allowable Catch; NT = Non-treaty; MSF = Mark Selective Fishery*



# Ocean Quotas

## Marine Areas 1-4 Annual Ocean Quotas

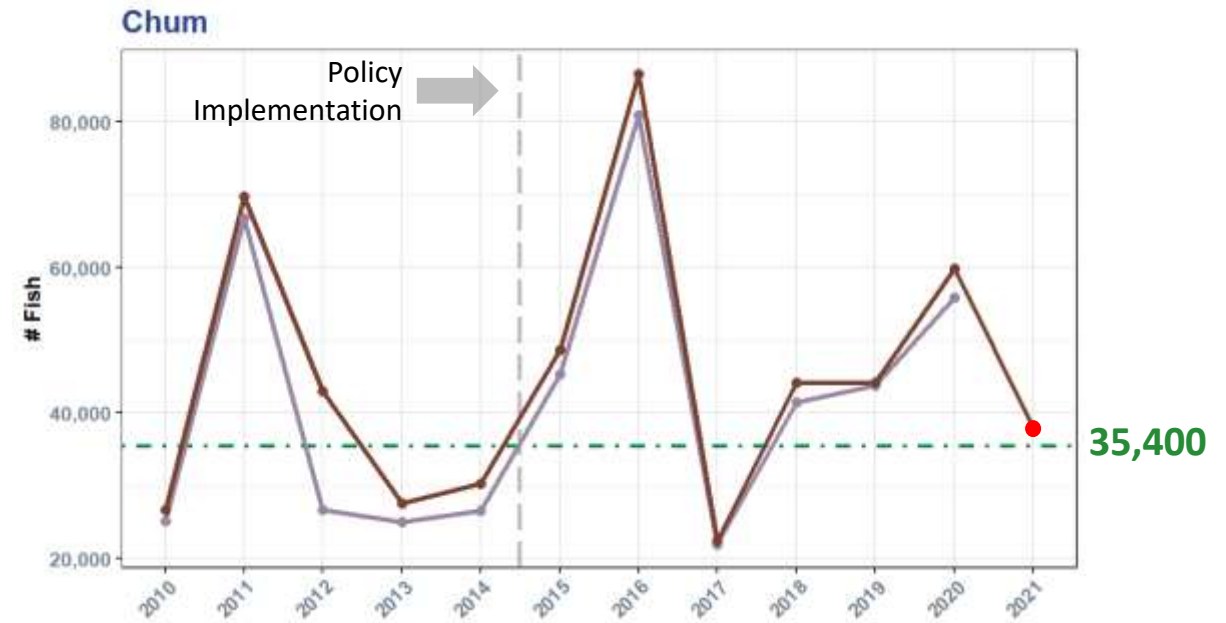
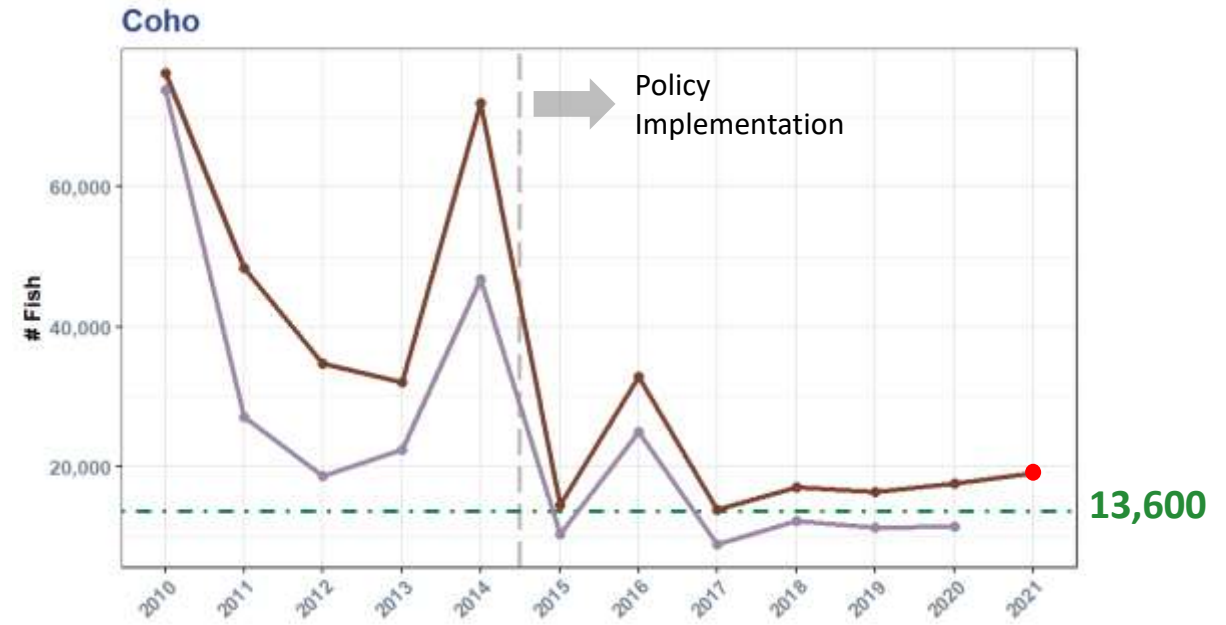


— Non-treaty — Treaty



# Recent Willapa Bay Trends

◆ Escapement    ◆ Post-season Run Size  
- - - Escapement Goal  
● Predicted



# 2021 Willapa Bay Forecasts

Species	Natural	Hatchery	Total
<b>Chinook</b>	3,924	30,470	34,394
<b>Coho</b> <i>Ocean Age 3 Forecasts</i>	19,040	61,614	80,654
<b>Chum</b>	38,013	1,064	39,077



# 2021 Management Objectives: Chinook

Fish and Wildlife Commission adopted interim guidance on March 12, 2021 for Willapa Bay. The Department is directed to:

- Actively manage not to exceed 20% natural origin Chinook impact rate (Naselle and Willapa rivers)
- Suspend time and area restrictions for commercial fisheries south of commercial area 2T
- Determine daily limits for recreational fisheries
  - » Daily limits for Chinook and Coho
  - » Season length to achieve recreational priority for Chinook
- Continue the development and implementation of test fisheries and in-season update models



# 2021 Management Objectives: Coho & Chum

## Coho Guidance

- Achieve aggregate spawner goal for natural-origin Coho
- Prioritize commercial fishing opportunities
  - September 16 through October 14
- Provide recreational fishing opportunities

## Chum Guidance

- Achieve aggregate spawner goal for naturally spawning Chum
- Provide commercial fishing opportunities
- Provide recreational fishing opportunities





# Questions?

**Link to submit NOF-related Public comments electronically:**

<https://wdfw.wa.gov/fishing/management/north-falcon>

**Address to join our Willapa Bay distribution list:**

[WillapaBay@dfw.wa.gov](mailto:WillapaBay@dfw.wa.gov)



## 2021 WILLAPA BAY FISHERY SUMMARY

**DRAFT**

### 2020 fisheries with 2021 preseason abundances

		CHINOOK							
		Total Hatchery	Villapa North	Nemah Palis	Naselle Bear	Total Natural	Villapa North	Nemah Palis	Naselle Bear
2020 Pre-Season Runsize		30,470	1,804	16,284	12,382	3,324	2,981	193	750

		HATCHERY				NATURAL					
		Total Hatchery	VB Origin	Villapa North	Nemah Palis	Naselle Bear	Total Natural	VB Origin	Villapa North	Nemah Palis	Naselle Bear
Commercial Catch		1,401	1,401	362	8	1,031	0	0	0	0	0
Commercial Harvest Rate (HR)		0.046	0.200	0.001	0.083		0.067	0.068	0.001	0.081	
Recreational Marine Catch		2,223	503	5	1,713		159	142	0	18	
Marine HR		0.073	0.279	0.000	0.138		0.041	0.048	0.000	0.024	
Recreational Freshwater Catch		5,920	143	4,874	904		117	60	40	17	
FW HR		0.194	0.079	0.299	0.073		0.030	0.020	0.205	0.023	
Expected Escapement		20,926	797	11,397	8,734		3,384	2,576	153	655	
Total Exploitation Rate		0.313	0.558	0.300	0.295		0.138	0.136	0.206	0.127	

Chinook Hatchery Escapement Goal = 6,173      Chinook Natural Escapement Goal = 4,353

		COHO							
		Total Hatchery	Villapa North	Nemah Palis	Naselle Bear	Total Natural	Villapa North	Nemah Palis	Naselle Bear
2020 Pre-Season Runsize		49,733	8,081	0	41,652	17,393	13,807	2,094	1,493

		HATCHERY				NATURAL				
		Total Hatchery	Villapa North	Nemah Palis	Naselle Bear	Total Natural	Villapa North	Nemah Palis	Naselle Bear	
Commercial Catch		8,711	1,876	0	6,835	2,279	1,516	194	569	
Commercial Harvest Rate (HR)		0.175	0.232	0.000	0.164	0.131	0.110	0.093	0.381	
Recreational Marine Catch		2,857	420	0	2,438	856	575	228	53	
Marine HR		0.057	0.052	0.000	0.059	0.049	0.042	0.109	0.035	
Recreational Freshwater Catch		3,039	819	43,764	2,017	77	39	1	24	
FW HR		0.061	0.101	0.000	0.048	0.054	0.003	0.000	0.016	
Expected Escapement		35,125				14,180				
Total Exploitation Rate		29.4%				18.5%				

Coho Hatchery Escapement Goal = 2,500      Coho Natural Escapement Goal = 13,600

		TOTAL CHUM	
2020 Pre-Season Runsize		39,077	
Commercial Catch		1,678	
Commercial Harvest Rate (HR)		0.043	
Recreational Marine Catch		116	Recreational Retention allowed
Marine HR		0.003	
Recreational Freshwater Catch		159	Recreational Retention allowed
FW HR		0.004	
Expected Escapement		37,124	Escapement Goal = 35,400
Total Exploitation Rate		5.0%	

		Total Commercial Days Scheduled						
		Stat Week	2T	2U	2N	2R	2M	
2021 Dates								
Aug 1 - 7		32	0	0	0	0	0	Closed
Aug 8 - 14		33	0	0	0	0	0	
Aug 15 - 21		34	0	0	0	0	0	
Aug 22 - 28		35	0	0	0	0	0	
Aug 29 - Sept 4		36	0	0	0	0	0	
Sept 5 - 11		37	1	1	1	0	0	12 hr openings, CHK MSF and Chum Retention allowed, Tangle Net Only
Sept 12 - 18		38	2	2	2	0	2	
Sept 19 - 25		39	2	2	2	0	2	
Sept 26 - Oct 2		40	2	2	2	0	2	
Oct 3 - 9		41	2	2	2	0	2	
Oct 10 - 16		42	0	1	2	0	2	12 hr openings, CHK MSF & Chum Retention allowed, Gillnet small mesh gear.
Oct 17 - 23		43	0	0	0	0	0	
Oct 24 - 30		44	0	0	0	0	0	
Oct 31 - Nov 6		45	0	0	0	0	0	
Nov 7 - 13		46	0	0	0	0	0	
Nov 14 - 20		47	0	0	0	0	0	
Nov 21 - 27		48	0	0	0	0	0	
Nov 28 - 30		49	0	0	0	0	0	
<b>Total</b>			<b>9</b>	<b>10</b>	<b>11</b>	<b>0</b>	<b>10</b>	

Recreational Regulations								
Area	Section	Season	Daily Limit	Adult Bag Limit	2-Pole	2-Pole Upper Extent	Natural CHK Retention	Natural Coho Retention
<b>Marine Area 2.1</b>	Control Zone Open	June 20 - July 31	Same as Marine Area 2 when open for salmon					
		Aug. 1 - Jan. 31	6	2	Yes	-	0	2
<b>Villapa River</b>	mouth upstream to Hwy 6 Bridge below Trap Crk	Aug. 1 - Jan. 31	6	2	Yes	-	0	0
	Hwy 6 upstream to Fork Creek	Aug. 16 - Jan. 31	6	2	Yes	2nd Bridge on Camp One Rd.	0	0
	Mouth of Fork Creek to Hwy 6 Br (near Lebam)	Oct. 1 - Jan. 31	6	2	No	-	0	0
<b>SF Villapa River</b>	mouth to bridge on Pehl Rd	Aug. 1 - Sept 30	6	2	No	-	0	0
<b>Fork Creek</b>	Fork Crk Hatchery rack upstream 500' at the fishing boundary sign	Oct. 1 - Jan. 31	6	2	No	-	0	0
<b>North River</b>	mouth upstream to Fall River	Closed to salmon fishing						
<b>Smith Creek</b>	mouth to Hwy 101 Bridge	Closed to salmon fishing						
<b>North Nemah River</b>	Hwy 101 Br. to Nemah Valley Rd. Br.	Aug. 1 - Sept 30	6	2	No	-	0	0
	Nemah Valley Rd. Br. Upstream to Hancock Property Line approx. 1.68 M.	Closed to salmon fishing						
	Hancock Property Line upstream to temporary weir	Aug. 1 - Sept 15, Seniors Only*	6	2	No	-	0	0
	temporary weir upstream to Nemah Hat. Dam	Closed to ALL fishing						
	Nemah Hatchery dam upstream to N700 Rd	Closed to salmon fishing						
<b>Middle Nemah River</b>	mouth to bridge on Middle Nemah A-line Rd	Sept. 1 - Sept 30	6	2	No	-	0	0
<b>South Nemah River</b>	mouth to confluence with Middle Nemah R.	Sept. 1 - Sept 30	6	2	No	-	0	0
<b>Palis River</b>	Hwy 101 to mouth of Middle Fork	Closed to salmon fishing						
<b>Niawakum River</b>	Hwy 101 Br. To the S. Bend/Palis Rd Br	Closed to salmon fishing						
<b>Naselle River</b>	mouth (Hwy 101) upstream to South Fork Naselle River	Aug. 1 - Jan. 31	6	2	Yes	South Fork	0	0
	from South Fork Naselle River upstream to Hwy 4	Aug. 1 - Jan. 31	6	2	No	-	0	0
	Hwy 4 to 300' below hatchery attraction channel	Oct 16 - Jan. 31	6	2	No	-	0	0
	Attraction channel upstream to Crown Mainline Bridge	Oct 16 - Jan. 31	6	2	No	-	0	0
<b>Bear River</b>	Mouth upstream to Lime Quarry Rd	Closed to salmon fishing						

\* Seniors defined as 70 years old and over

## 2021 Willapa Bay Fishery Model Run Summary

Model	Expected Natural Chinook Impact Rate			Expected Escapement			Policy Priorities				Allocation % by Sector				# Commercial Days Scheduled
	Willapa River ≤ 20%	Naselle River ≤ 20%	Chum Impacts	NOR Chinook Goal=4,353	NOR Coho Goal=13,600	Chum Total Goal = 35,400	Willapa Bay Total Expected Harvest				Chinook		Coho		
							Chinook - HOR Retention		Coho Total		Rec	Comm	Rec	Comm	
A	13.6%	12.7%	5.0%	3,384	14,180	37,124	8,143	1,401	6,830	10,990	85.3%	14.7%	38.3%	61.7%	11

## Fishery Description

Model Run	Natural Chinook HR Cap		Fishery	Total Daily Limit	Chinook Fishery - UM Release Required (MSF)	Natural Coho Daily Limit	Hatchery Coho Daily Limit	Chum	Ex-Vessel Value
	Willapa & Naselle rivers	Chum Impacts							
A	Actively manage not to exceed 20%	na	Marine Rec	2	MSF starting August 1	2	2	Retention	
			Freshwater Rec	2	MSF	0	2	Retention	
			Commercial	Tangle Nets	Prior to 9/13 areas 2T, 2U, 2N	-	-	Retention Sept & Oct	\$221,548
				November	Closed				

# 2021 Willapa Bay NOF Fishery Suggestions or Comments Received from the Public

As of March 17, 2021

## **Recreational**

### Naselle River

- Revise regulations from August 1 – October 15 to prohibit the use of jig heads or twitching jigs to reduce foul hooking of targeted fish