

WELCOME – THANKS FOR JOINING US!

ZOOM MEET/ CALL LOGISTICS / GROUND RULES

- You can turn your camera on and mute or unmute yourself through the control panel at the bottom of your screen.
- We will keep folks muted during the beginning of our program, then will unmute folks when we open it up for questions and feedback. Callers can unmute yourself by pressing *6 on your phone.
- We ask that you “raise your hand” to ask a question which you can access through the control panel at the bottom of the screen. You can also raise your hand by hovering over your face or name on the list of participants. Callers can raise their hand by dialing *9.
- Be respectful of others
 - Mute phone or line
 - Be tough on issues and questions, not on people or organizations
 - No personal attacks, insults or threats
 - Listen
 - Speak and act professionally – *no offensive, disrespectful, or derogatory language, including profanity*
 - Allow for a balance of speaking time – *limit length and number of times to speak on each topic*
- This meeting is being recorded.
- If you have any technical issues during the call, use the chat button and we will help you through those.
Please do not use the chat for questions or comments on the presentation, we will take those live.



2021 North of Falcon Public Meeting Willapa Bay

Link to join meeting via Zoom:

<https://wdfw.wa.gov/get-involved/calendar/event/north-falcon-willapa-bay-fisheries-discussion-1>



WB Fishery proposals: Model A

New Abundances with last year's fisheries (NALF Run)

Model A: Meets all management objectives (shared 3/17). Changes: 10.9%, 11.0% CHK, 14,842 coho, 37,303 chum.

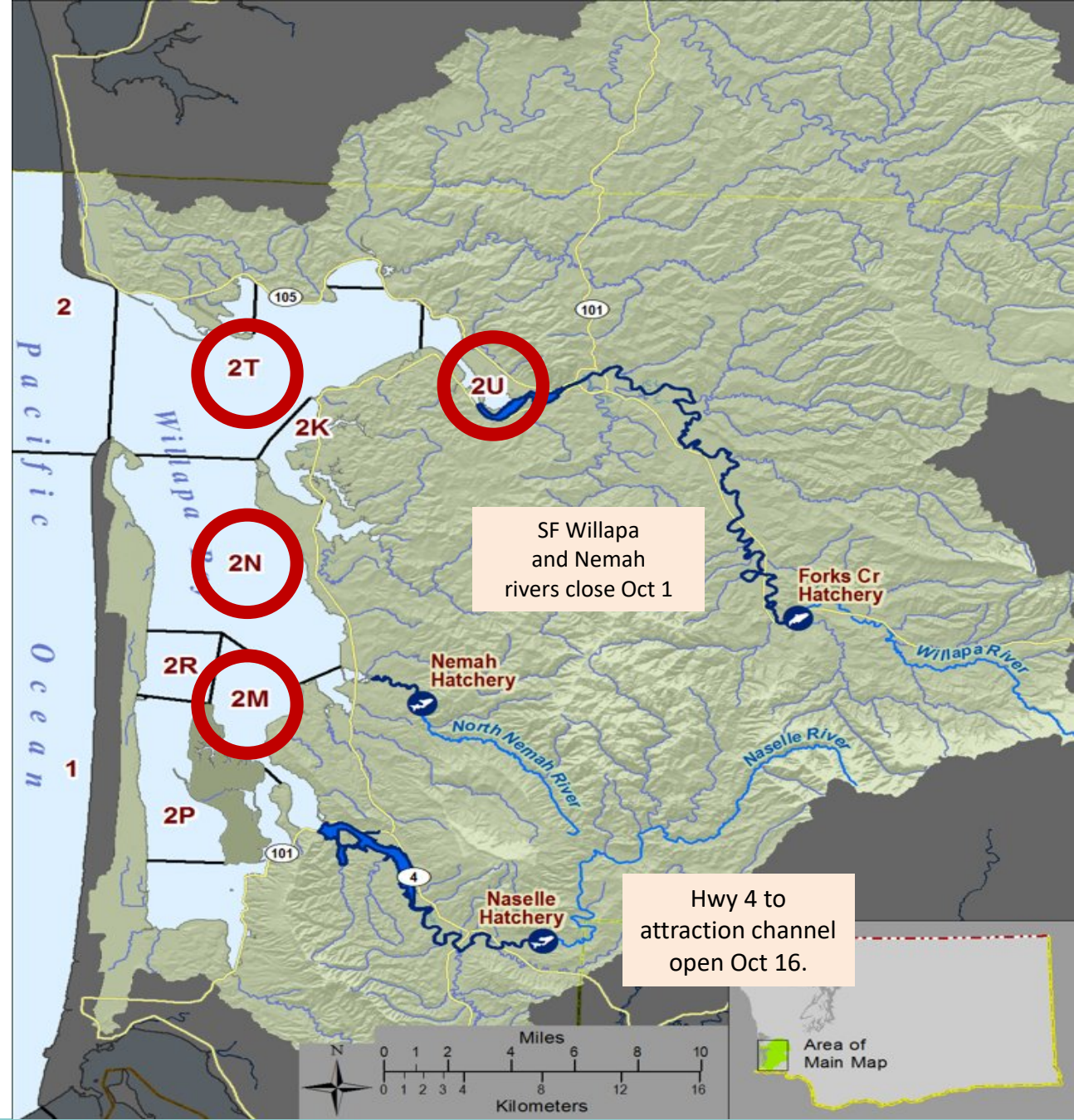
Objectives: 20% CHK, 13,600 coho, 35,400 chum

Commercial:

- 11 days of commercial fishing,
- Tangle nets utilized prior to 9/13 in 2T, 2U, 2N,
- Weeks 38-41: Areas 2T,2U,2N,2M,
- Week 42: Areas 2U,2N,2M,
- Closed November (weeks 37-42)

Sport Marine: Daily Limit 2, Mark Selective Aug 1, Natural and Hatchery Coho retention daily limit 2.

Sport Freshwater: Close those FW systems without hatchery supplementation; SF Willapa and Nemah rivers close Oct 1; release all unmarked chinook and unmarked Coho



Commercial Proposals Models B & D

Model B: Meets all management objectives; ~~11%, 18.7% CHK, 13,996 Coho, 36,257 Chum.~~

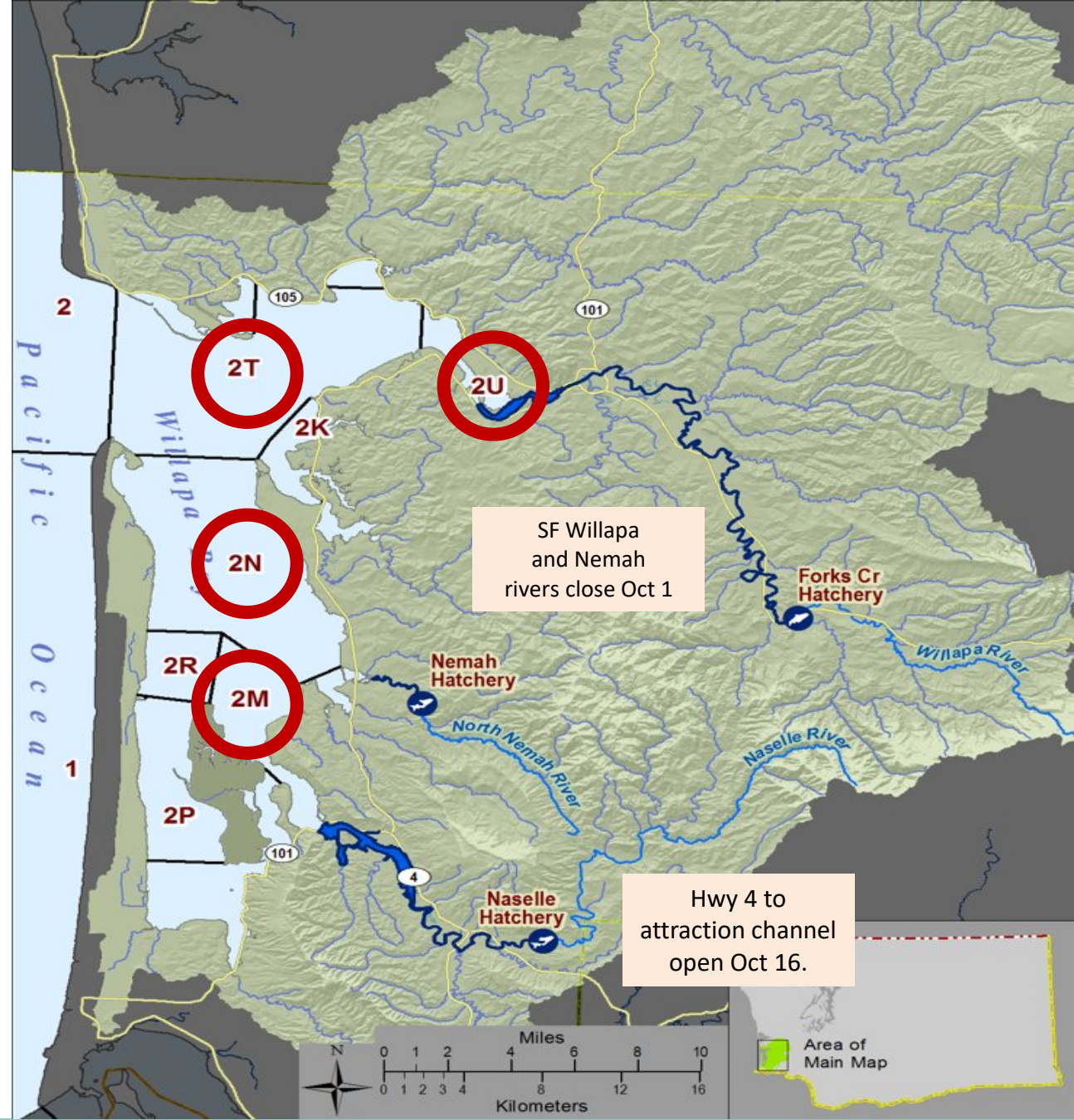
Changes: 8.3 %, 17.0 % CHK, 14,683 coho, 36,435 chum.

Objectives: 20% CHK, 13,600 coho, 35,400 chum

Commercial:

- 20 days of fishing,
- Tangle nets:
 - Week 34 (Aug 15-21): 2N,
 - Weeks 35-37: 2N, 2M;
 - Week 38: All areas but R
- Small mesh:
 - Weeks 39: all areas but R,
 - Week 40: 2T, 2U, 2M,
 - Week 42: 2T, 2N, 2M,
 - Week 45 (Nov): 2T, 2U, 2M;
 - Week 46 (Nov): 2U

Sport Marine & Freshwater: No change from NALF model



Commercial Proposals Models B & D

Model D: Meets all management objectives; ~~11.1%, 18.6% CHK, 14,022 Coho, 36,234 Chum.~~


Changes: 8.5 %, 16.9 % CHK, 14,708 coho, 36,412 chum.

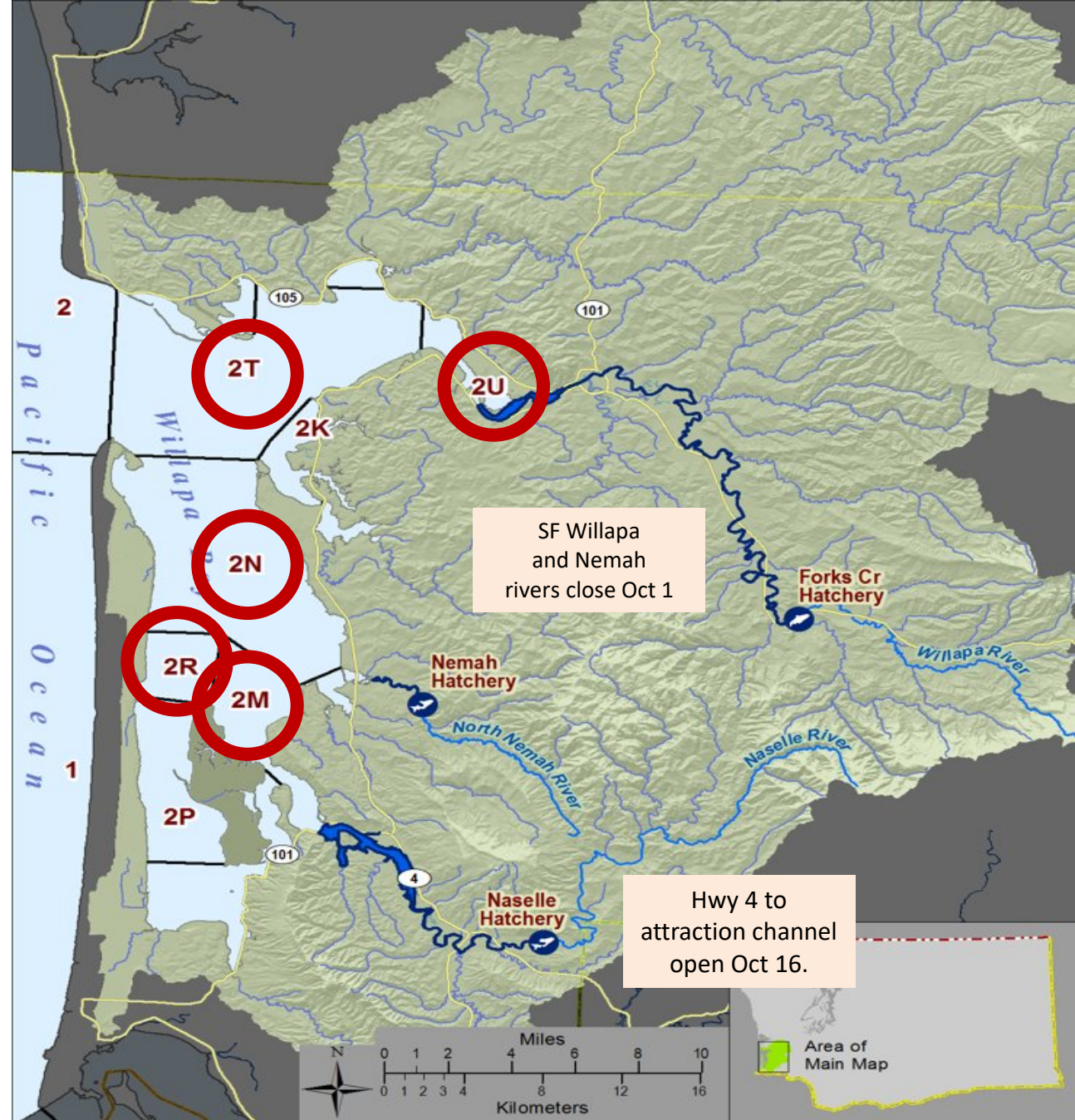
Objectives: 20% CHK, 13,600 coho, 35,400 chum

Commercial:

- 22 days of fishing,
- Tangle nets:
 - Week 34 (Aug 15-21): 2N
 - Weeks 35-37: 2N, 2M
 - Week 38: All areas but R
- Small mesh:
 - Weeks 39-40: all areas but R,
 - **Week 41: 2U, 2N, 2R**
 - **Week 42: All areas (no 2P)**
 - Week 45 (Nov): 2T, 2U, 2M
 - Week 46 (Nov): 2U

Sport Marine & Freshwater: No change from NALF model

 Indicates change from previous proposal



WB Fishery proposals: Model C

With very few proposals received, staff added one to encourage conversation

Model C: Meets all management objectives; 10.7%, 18.4% CHK, 13,807 Coho, 35,665 Chum

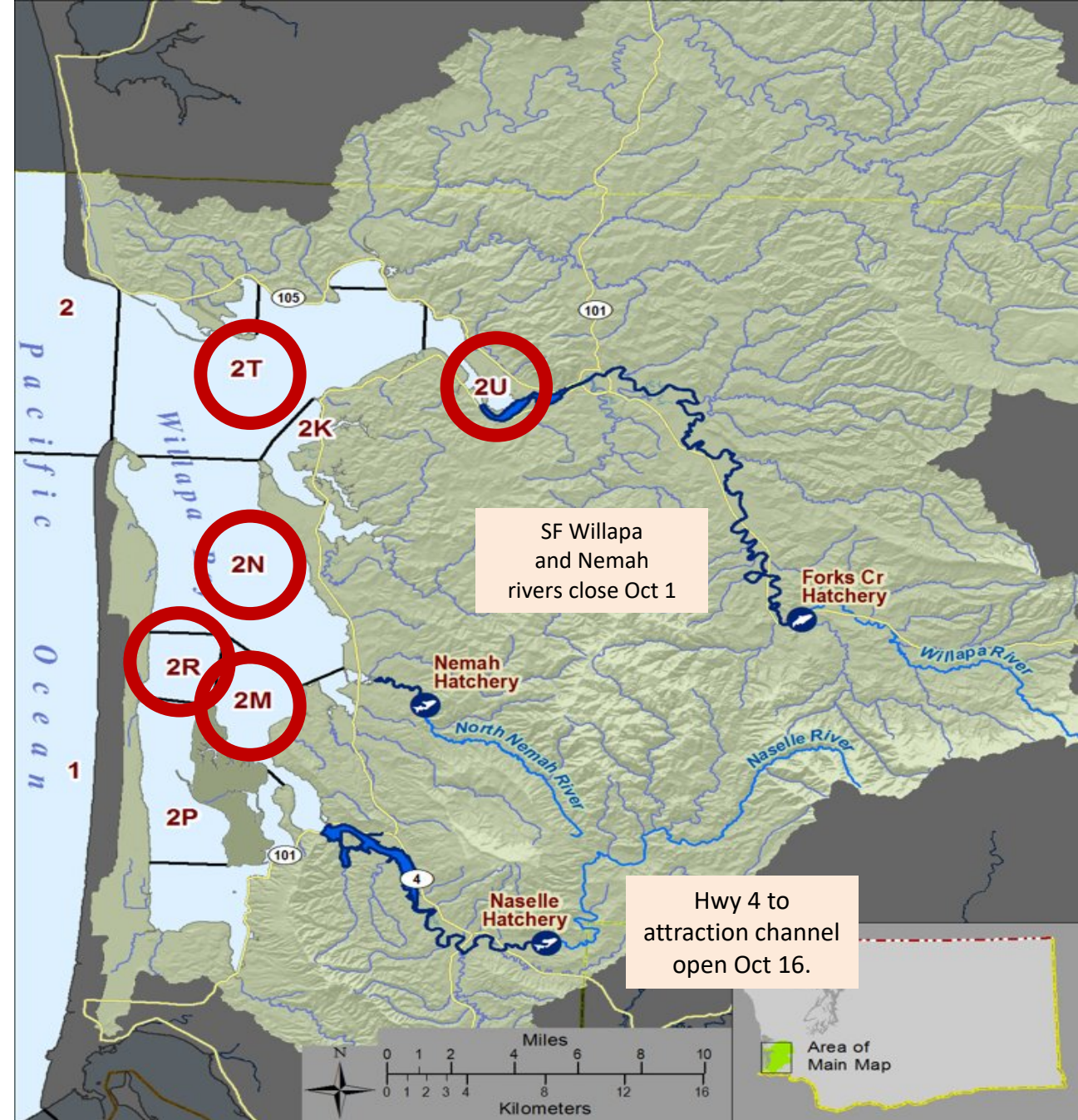
Changes: 8.1 %, 16.7 % CHK, 14,492 coho, 35,842 chum.

Objectives: 20% CHK, 13,600 coho, 35,400 chum

Commercial:

- 23 days of fishing,
- Tangle nets:
 - Week 34 (Aug 15-21): 2N **No fishing**
 - Weeks 35-37: 2N, 2M
 - Weeks 35-37: 2N, 2M
 - Week 38: All areas but R
- Small mesh:
 - Week 39: All areas but R,
 - Week 40: All areas
 - Week 41: 2U, 2N, 2R **No fishing**
 - Week 42: All areas
 - Week 45-46 (Nov): All areas

Sport Marine & Freshwater: No change from NALF model



WB Fishery proposals: Model E

Model E: Meets all management objectives; 8.3%, 6.4%
CHK, 15,013 Coho, 35,435 Chum

Changes: 5.6 %, 4.7 % CHK, 15,803 coho, 35,612 chum.

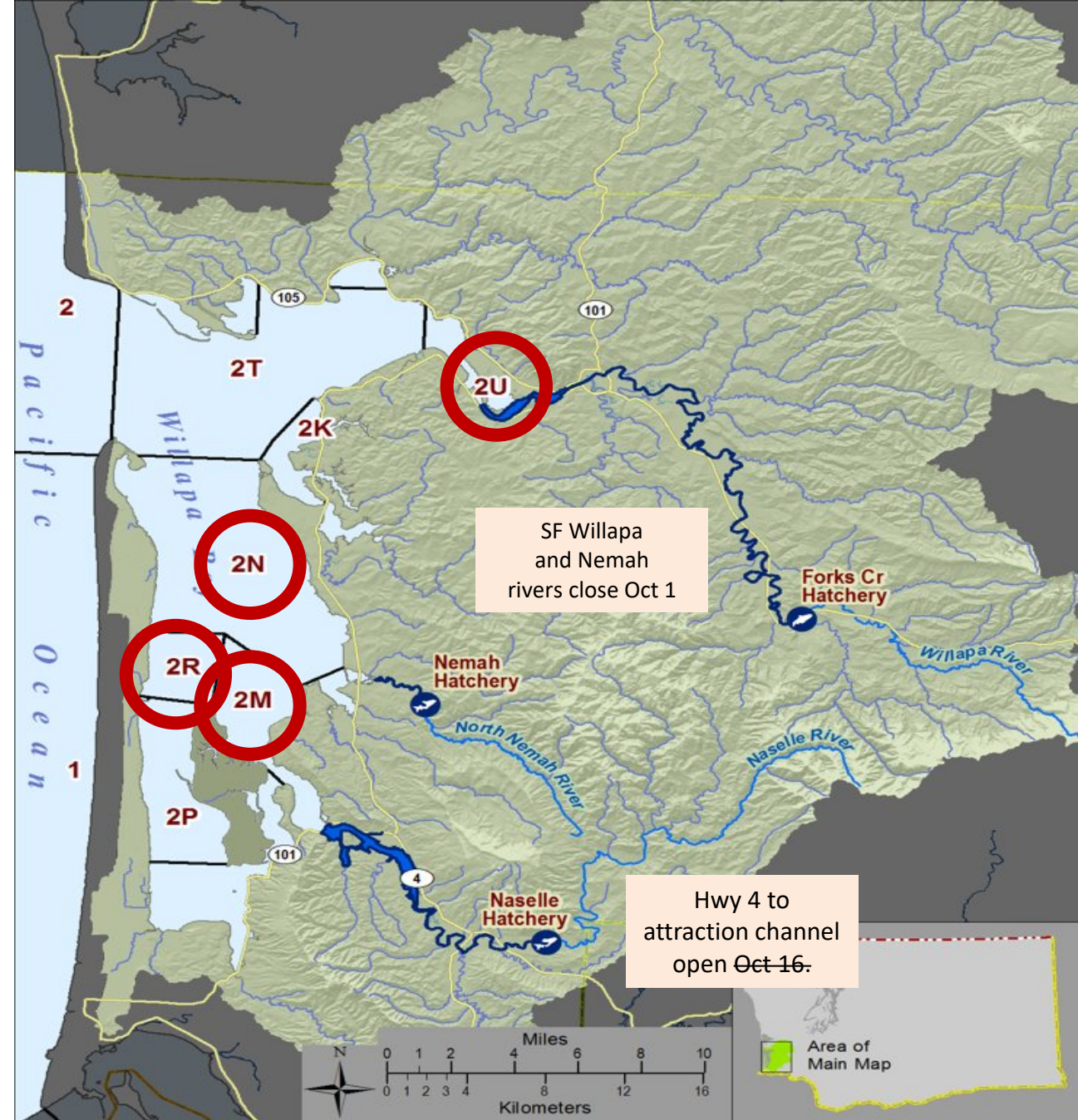
Objectives: 20% CHK, 13,600 coho, 35,400 chum

Commercial:

- 11 days of fishing,
- Tangle nets: No tangle nets
 - No fishing in 2T
 - No Fishing in 2U, 2N, 2M Until Oct 1.
- Small mesh:
 - Weeks 40-43: 2U, 2N, 2R, 2M

Sport Marine & Freshwater:

- Increase daily limit on Nemah to 3 adults,
- Open Naselle Hwy 4 to Attraction channel Aug 16- instead of Oct 16.



WB Fishery proposals: Model F

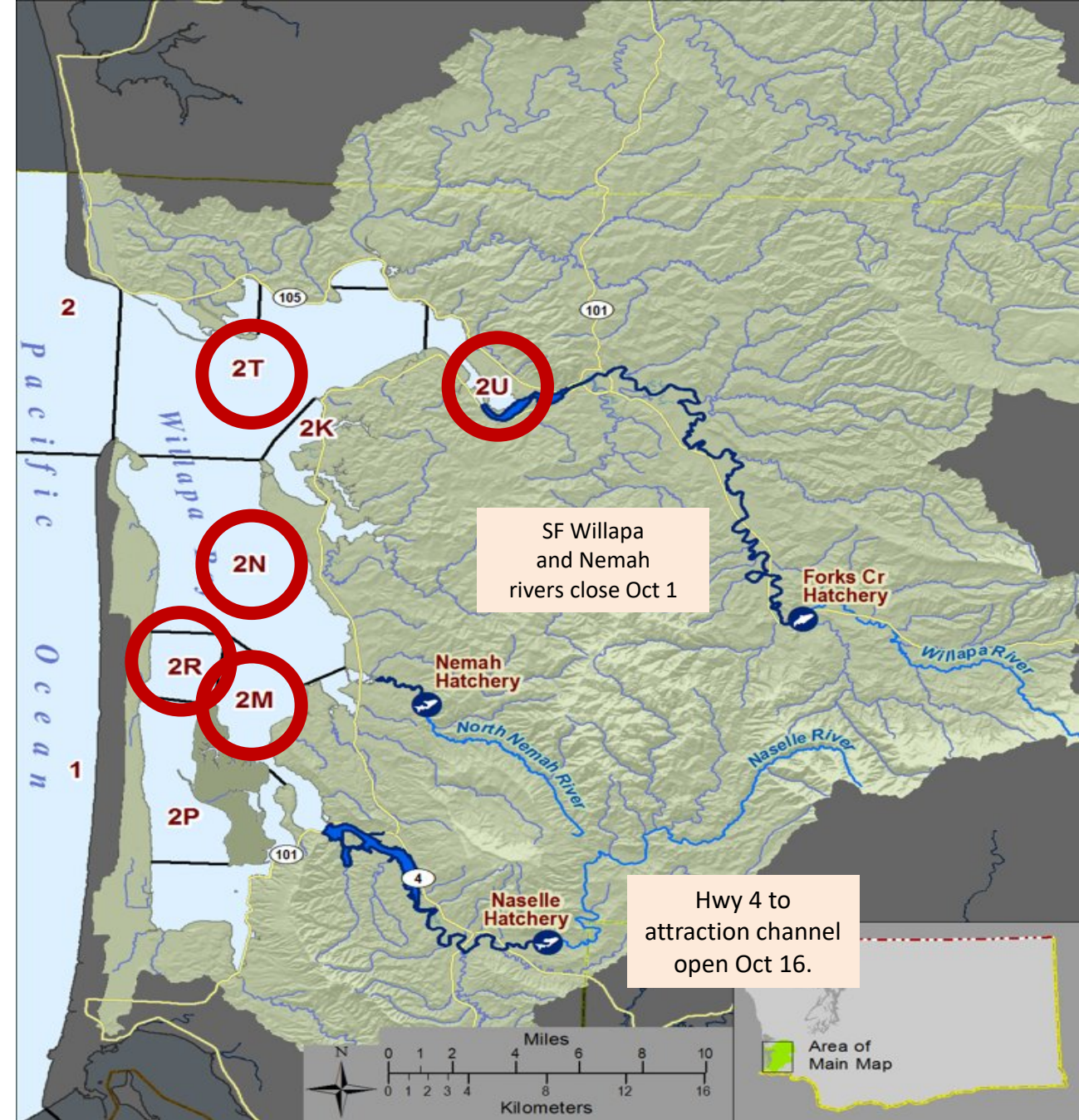
Model F: Meets all management objectives;
9.0 %, 19.9% CHK, 13,965 coho, 36,332 chum.

Objectives: 20% CHK, 13,600 coho, 35,400 chum

Commercial:

- 29 days of fishing,
- Tangle nets:
 - Week 34: Area 2N
 - Weeks 35-37: Areas 2N, 2M
 - Week 38: Areas 2T, 2U, 2N, and 2M
- Small mesh:
 - Week 39: Areas 2T, 2U, 2N, and 2M
 - Week 40- 42: Areas 2T, 2U, 2N, 2R and 2M
 - Week 45 (Nov): Area 2T, 2U and 2M
 - Week 46: Area 2T and 2U
 - Weeks 47 – 48: Area 2U

Sport Marine & Freshwater: No change from NALF model

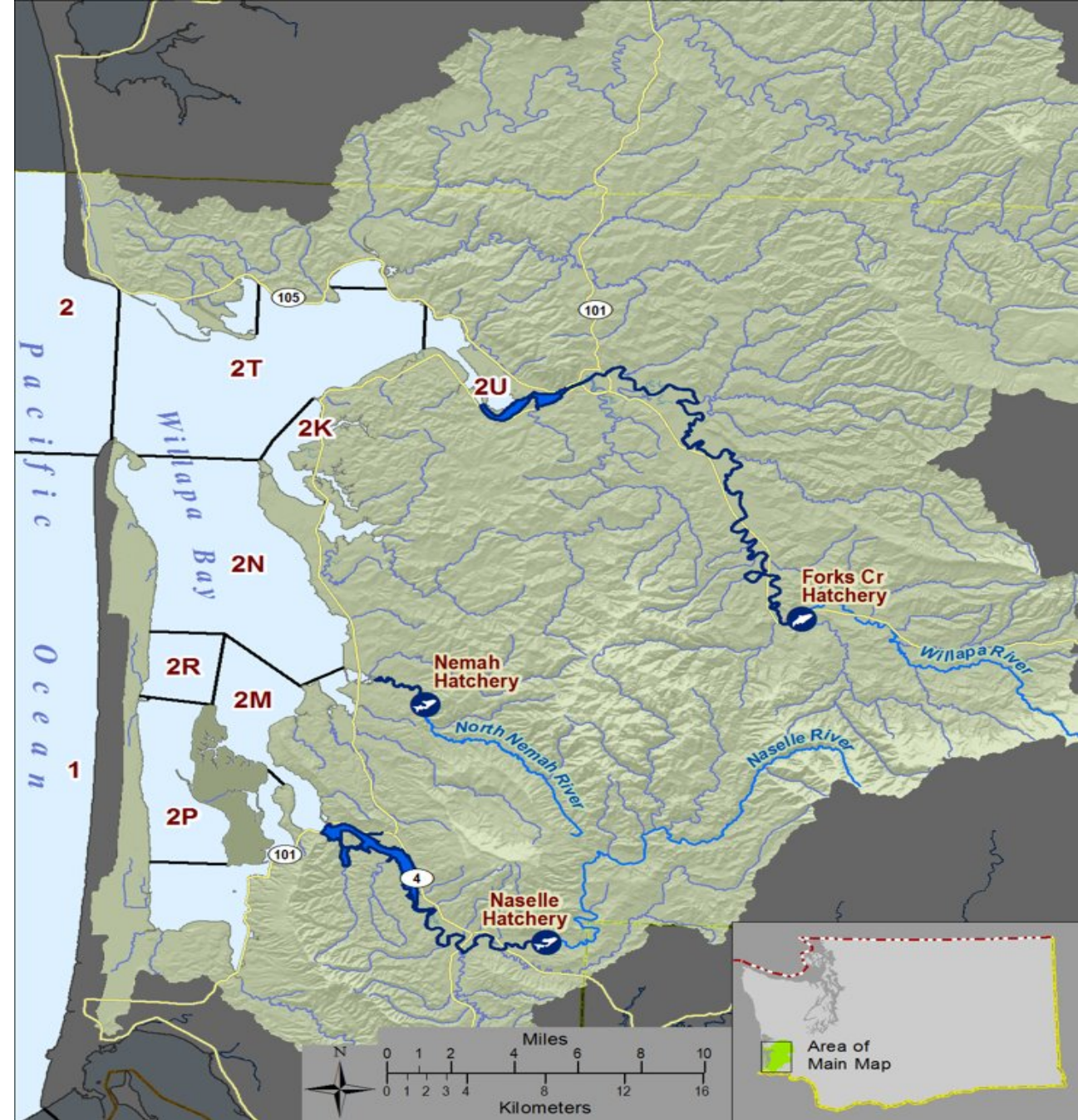


WB Fishery proposals:

Objectives: 20% CHK, 13,600 coho, 35,400 chum

Additional fishery proposals for discussion:

- No commercial or recreational salmon fishing in 2021
- Open North, Bear, Palix rivers and Smith Creek to salmon catch and release fishing in 2021



2021 Willapa Bay Fisheries Summary

Model	Management Objectives			Expected Natural Chinook Impact Rate		Expected Chum Impacts	Expected Escapement			Policy Priorities				Allocation % by Sector			
				Willapa River < 20%	Naselle River < 20%		Natural Origin Chinook Goal = 4,353	Natural Origin Coho Goal = 13,600	Chum Total Goal = 35,400	Willapa Bay Total Expected Harvest				Chinook		Coho	
	Chinook	Coho	Chum			Chinook - Hatchery Origin Retention				Coho Total ¹		Rec	Comm	Rec	Comm	Rec	Comm
A (NALF)	Actively manage not to exceed 20% natural origin CHK Harvest rates impacts on Willapa & Naselle rivers	Achieve natural origin spawner escapement goal	Achieve spawner escapement goal for naturally spawning chum	10.9%	11.0%	4.5%	3,504	14,842	37,303	4,874	1,401	5,422	11,046	77.7%	22.3%	32.9%	67.1%
B				8.3%	17.0%	6.8%	3,536	14,683	36,435	4,874	3,308	5,422	10,688	59.6%	40.4%	33.7%	66.3%
C				8.1%	16.7%	8.3%	3,547	14,492	35,842	4,874	2,939	5,422	11,104	62.4%	37.6%	32.8%	67.2%
D				8.5%	16.9%	6.8%	3,533	14,708	36,412	4,874	3,338	5,422	10,340	59.4%	40.6%	34.4%	65.6%
E				5.6%	4.7%	8.9%	3,704	15,803	35,612	6,781	157	5,441	4,578	97.7%	2.3%	54.3%	45.7%
F				9.0%	19.9%	7.0%	3,493	13,965	36,332	4,874	3,697	5,422	13,228	56.9%	43.1%	29.1%	70.9%

Model A = 2020 fisheries with 2021 preseason abundances (NALF)

Model B = Commercial proposal # 1: No changes to recreational regulations from 2020

Model C = Staff Recommendation #1: No changes to recreational regulations from 2020

Model D = Commercial proposal #2: No changes to recreational regulations from 2020

Model E = Commercial proposal #3: Includes no 2T fishing, 2U, 2N and 2M do not open to fishing until Oct 1. Recreational changes include Nemah River with a 3 fish daily limit for Chinook and open Hwy 4 to the Naselle Hatchery Attraction Channel in the Naselle River on Aug 16 instead of Oct 16

Model F = Commercial proposal #4: No changes to recreational regulations from 2020



2021 Willapa Bay Fisheries Descriptions

Model Run	Fishery	Total Daily Limit	Chinook Fishery - UM Release Required	Mark Selective Fisheries (MSF)	Natural Coho Daily Limit	Hatchery Coho Daily Limit	Chum	Commercial Ex-Vessel Value
A 2020 fisheries with 2021 preseason abundances (NALF)	Marine Rec	2	MSF starting August 1		2	2	Retention	\$222,405
	Freshwater Rec	2	MSF		0	2	Retention	
	Commercial	Tangle Nets	Prior to 9/13 areas 2T, 2U, 2N		-	-	Retention Sept & Oct	
		November	Closed					
B	Marine Rec	2	MSF starting August 1		2	2	Retention	\$278,920
	Freshwater Rec	2	MSF		0	2	Retention	
	Commercial	Tangle Nets	Wks 34-37 2N & 2M, All open areas prior to 9/19		-	-	Retention	
		November	Limited - Wks 45 & 46 2T, 2U, & 2M		-	-	Retention	
C	Marine Rec	2	MSF starting August 1		2	2	Retention	\$277,694
	Freshwater Rec	2	MSF		0	2	Retention	
	Commercial	Tangle Nets	Wks 35-37 2N & 2M, All open areas prior to 9/19		-	-	Retention	
		November	Wks 45 & 46 only		-	-	Retention	
D	Marine Rec	2	MSF starting August 1		2	2	Retention	\$274,561
	Freshwater Rec	2	MSF		0	0	Retention	
	Commercial	Tangle Nets	Wks 34-37 2N & 2M, All open areas prior to 9/19		-	-	Retention	
		November	Limited - Wks 45 & 46 2T, 2U, & 2M		-	-	Retention	
E	Marine Rec	2	MSF starting August 1		2	2	Retention	\$94,741
	Freshwater Rec	2 except Nemah R. 3 fish	MSF		0	2	Retention	
	Commercial	Tangle Nets	No tangle net scheduled		-	-	Retention	
		November	Closed					
F	Marine Rec	2	MSF starting August 1		2	2	Retention	\$330,446
	Freshwater Rec	2	MSF		0	0	Retention	
	Commercial	Tangle Nets	Wks 34-37 2N & 2M, All open areas prior to 9/19		-	-	Retention	
		November	Limited - Wks 45 & 46 2T, 2U, & 2M		-	-	Retention	

Model A = 2020 fisheries with 2021 preseason abundances (NALF)

Model B = Commercial proposal # 1: No changes to recreational regulations from 2020

Model C = Staff Recommendation #1: No changes to recreational regulations from 2020

Model D = Commercial proposal #2: No changes to recreational regulations from 2020

Model E = Commercial proposal #3: Includes no 2T fishing, 2U, 2N and 2M do not open to fishing until Oct 1. Recreational changes include Nemah River with a 3 fish daily limit for Chinook and open Hwy 4 to the Naselle Hatchery Attraction Channel in the Naselle River on Aug 16 instead of Oct 16

Model F = Commercial proposal #4: No changes to recreational regulations from 2020



Questions and Feedback

Link to submit NOF-related Public comments electronically:

<https://wdfw.wa.gov/fishing/management/north-falcon>

Address to join our Willapa Bay distribution list:

WillapaBay@dfw.wa.gov

