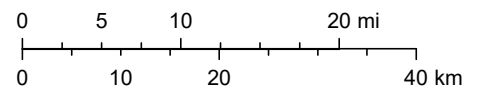


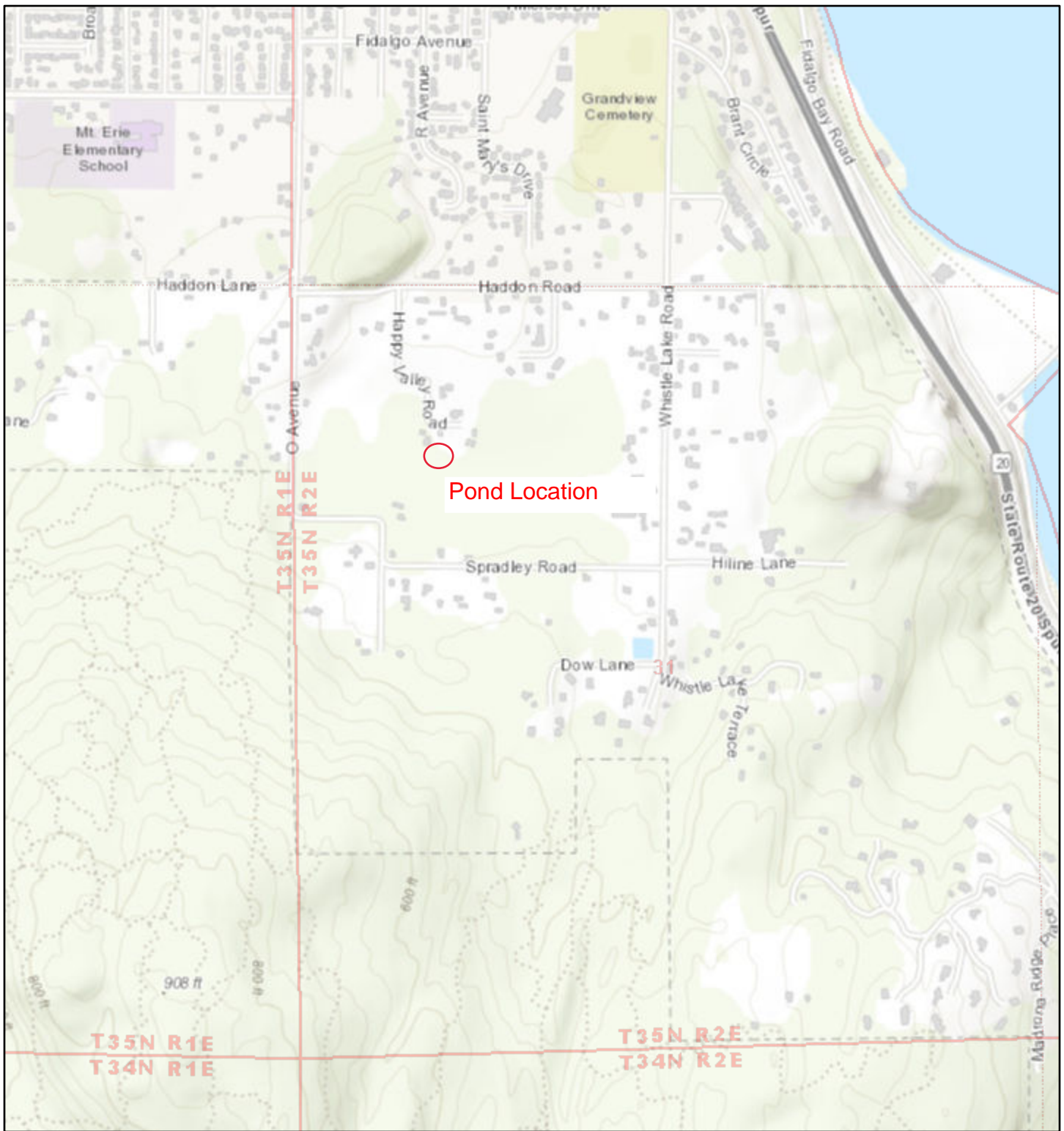


May 20, 2021

1:1,155,581



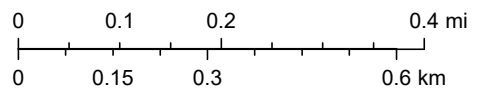
Sources: Esri, HERE, Garmin, Intermap, increment P Corp., GEBCO, USGS, FAO, NPS, NRCAN, GeoBase, IGN, Kadaster NL, Ordnance Survey, Esri Japan, METI, Esri China (Hong Kong), (c) OpenStreetMap contributors, and the GIS User Community



May 20, 2021

1:18,056

- Section
- Township



Sources: Esri, HERE, Garmin, Intermap, increment P Corp., GEBCO, USGS, FAO, NPS, NRCAN, GeoBase, IGN, Kadaster NL, Ordnance Survey, Esri Japan, METI, Esri China (Hong Kong), (c) OpenStreetMap contributors, and the GIS User Community

# 11140 Happy Valley Rd. 2 parcels



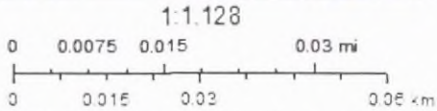
May 1, 2021

**Legend**

- County Boundary
- City Names
- Road Labels

- Hydro Labels
- Regional Labels

*30' x 60' approx  
Spring fed + runoff*



**Data Accuracy Warning:** All GIS data was created from available public records and existing data sources. Map features have been adjusted to achieve a best fit registration. While great care was taken in this process, maps from different sources may disagree as to the precise location of geographic features. Map discrepancies can be as great as 300 feet.