



T40R32

T40R34

T40R36

T39R31

T39R32

T39R34

T39R36

T39R31

T39R35

T38R31

T38R33

T38R35

T38R37

T37R33

T37R36

T37R37

T36R31

T36R32

T36R35

T36R37

T35R31

T35R33

T35R36

T35R37

T35R31

T35R37

T34R32

T34R35

T33R31

T33R32

T33R35

T33R37

T32R31

T32R33

T32R36

T32R37

T32R31

T31R31

T31R33

T31R35

T31R37

T30R31

T30R36

T30R33

T30R36

T30R31

T29R36

T29R31

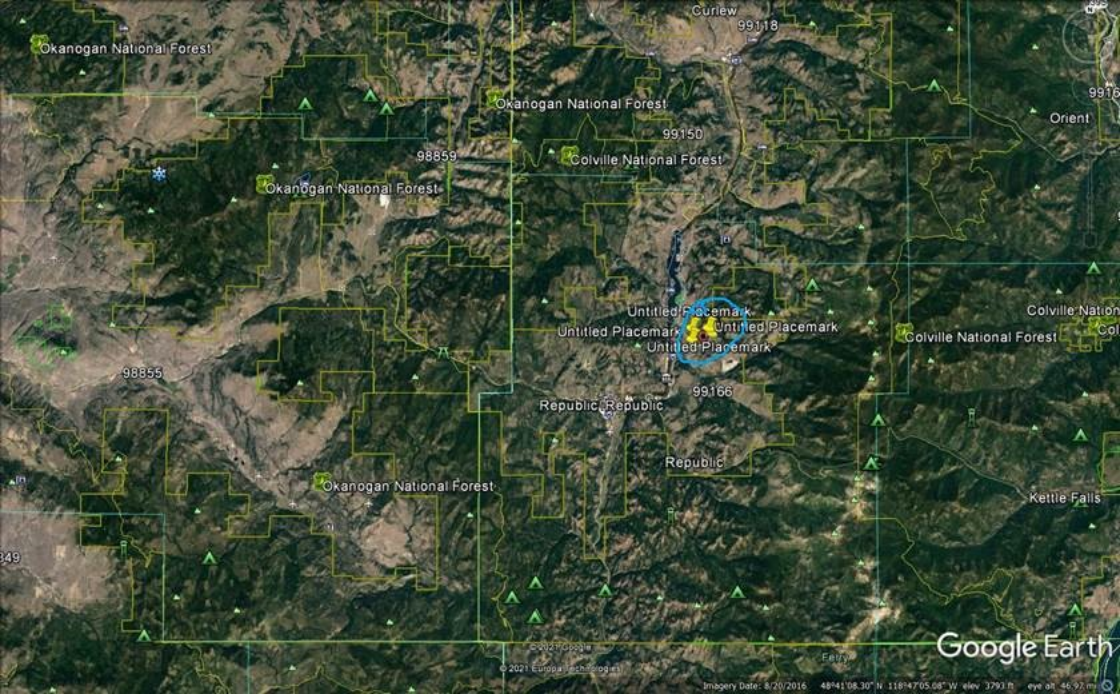
T29R33

T28R32

T28R33

T28R35

T27R34



Okanogan National Forest

Okanogan National Forest

Colville National Forest

Okanogan National Forest

Republic

Republic

Colville National Forest

Colville National Forest

Okanogan National Forest

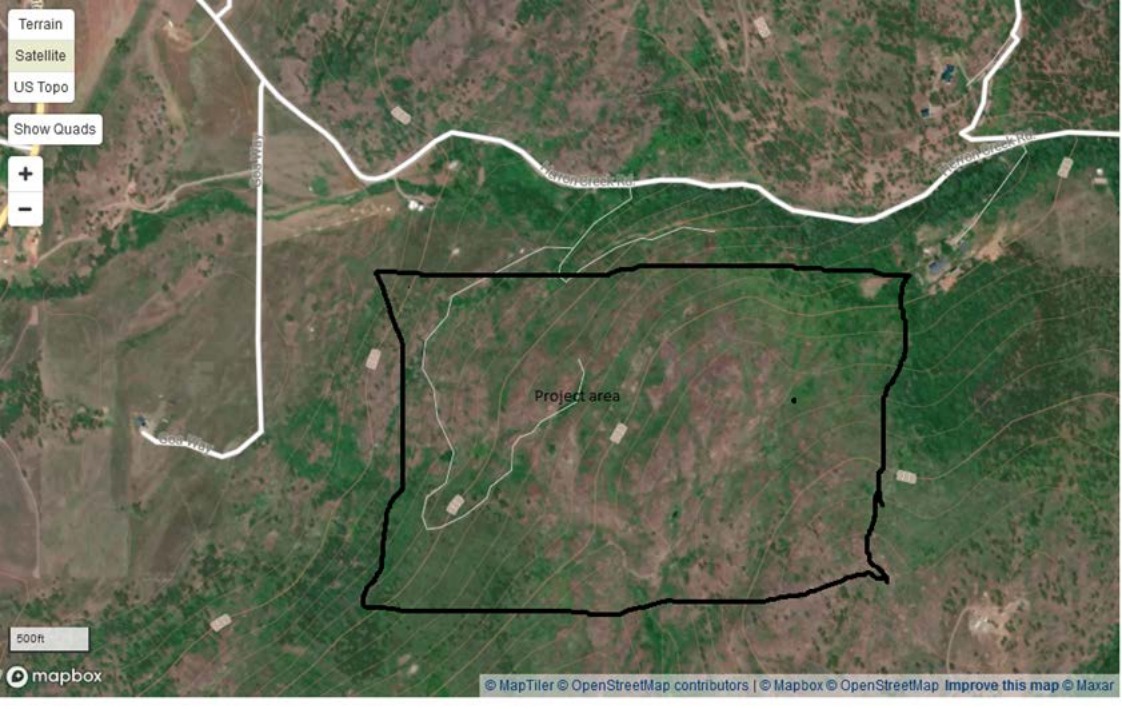
Kettle Falls

© 2021 Google

© 2021 Europa Technologies

Google Earth

Imagery Date: 8/20/2016 48°41'08.30" N 118°47'05.08" W elev 3793 h eye alt 46.92 m



Terrain

Satellite

US Topo

Show Quads

+

-

500ft

mapbox

© MapTiler © OpenStreetMap contributors | © Mapbox © OpenStreetMap Improve this map © Maxar