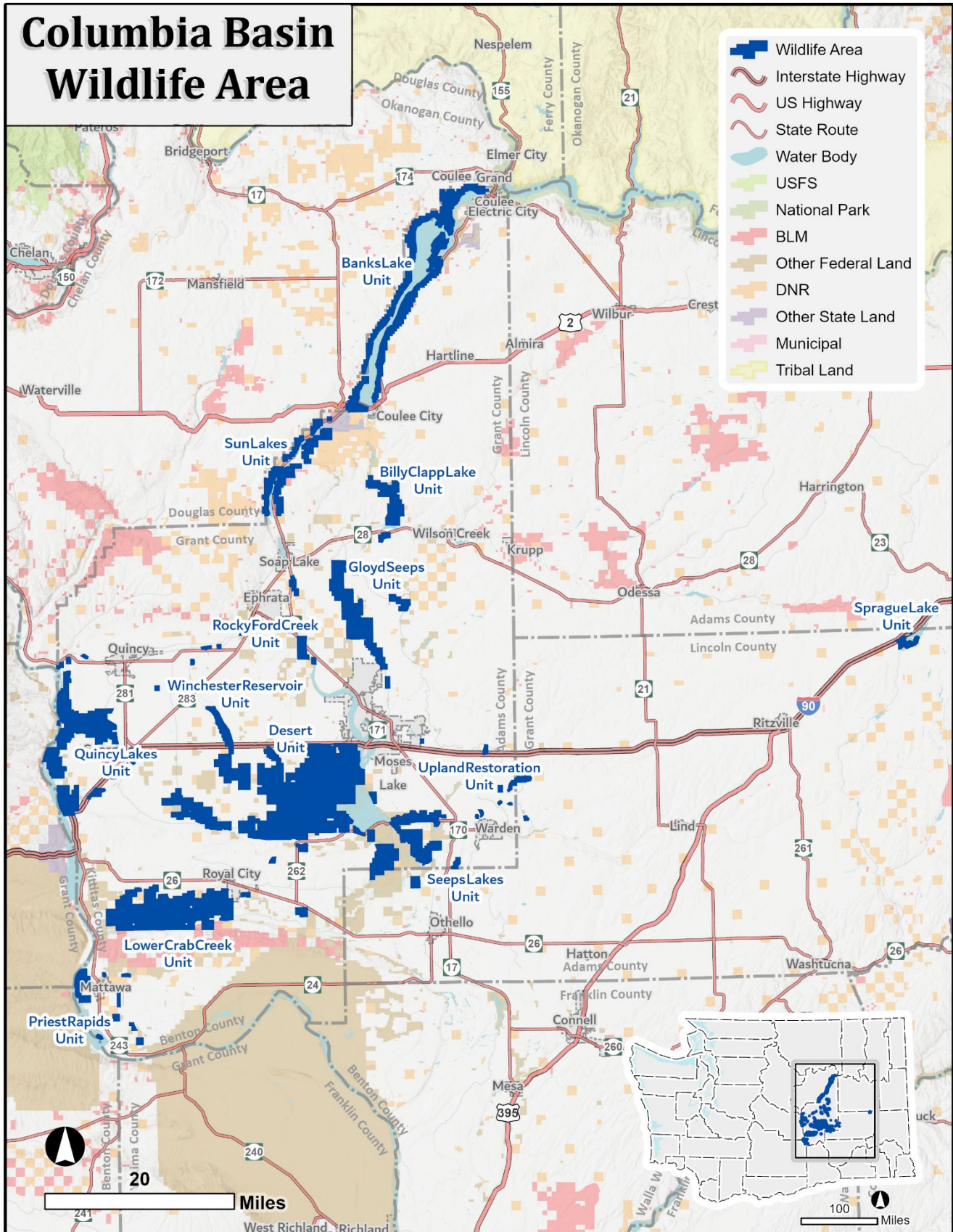


Columbia Basin Wildlife Area



- Wildlife Area
- Interstate Highway
- US Highway
- State Route
- Water Body
- USFS
- National Park
- BLM
- Other Federal Land
- DNR
- Other State Land
- Municipal
- Tribal Land


20 Miles

100 Miles

Legend

- Draft -

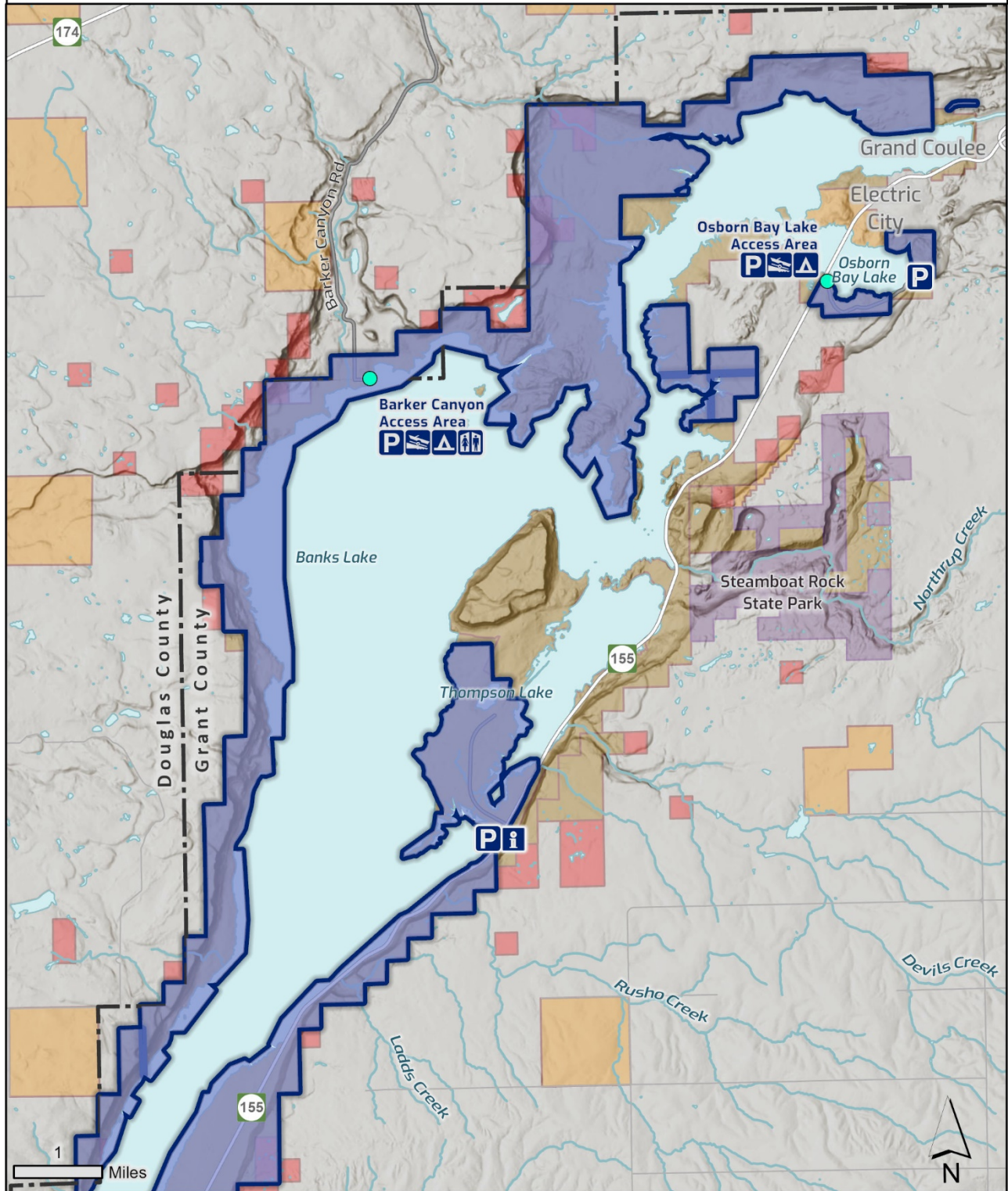
10/4/2021

- | | |
|---|---|
|  County Line | Water Access Areas |
|  Roads |  No Launch |
|  Primary Access Routes |  Hand Launch Only |
|  Interstate Highway |  Boat Launch |
|  US Highway |  Restroom |
|  State Route |  Parking |
|  Lake, Pond, or Wide River |  Boat Launch |
|  Swamp or Marsh |  Hand Launch |
|  River or Perennial Stream |  Office |
|  USFS Wilderness |  Visitor Center |
|  USFS |  Camping |
|  National Park |  Information Kiosk |
|  BLM | |
|  Other Federal Land | |
|  DNR | |
|  Other State Land | |
|  Municipal | |
|  Tribal Land | |
|  WDFW Managed Land | |



Banks Lake Unit (North)

- Draft -
10/5/2021

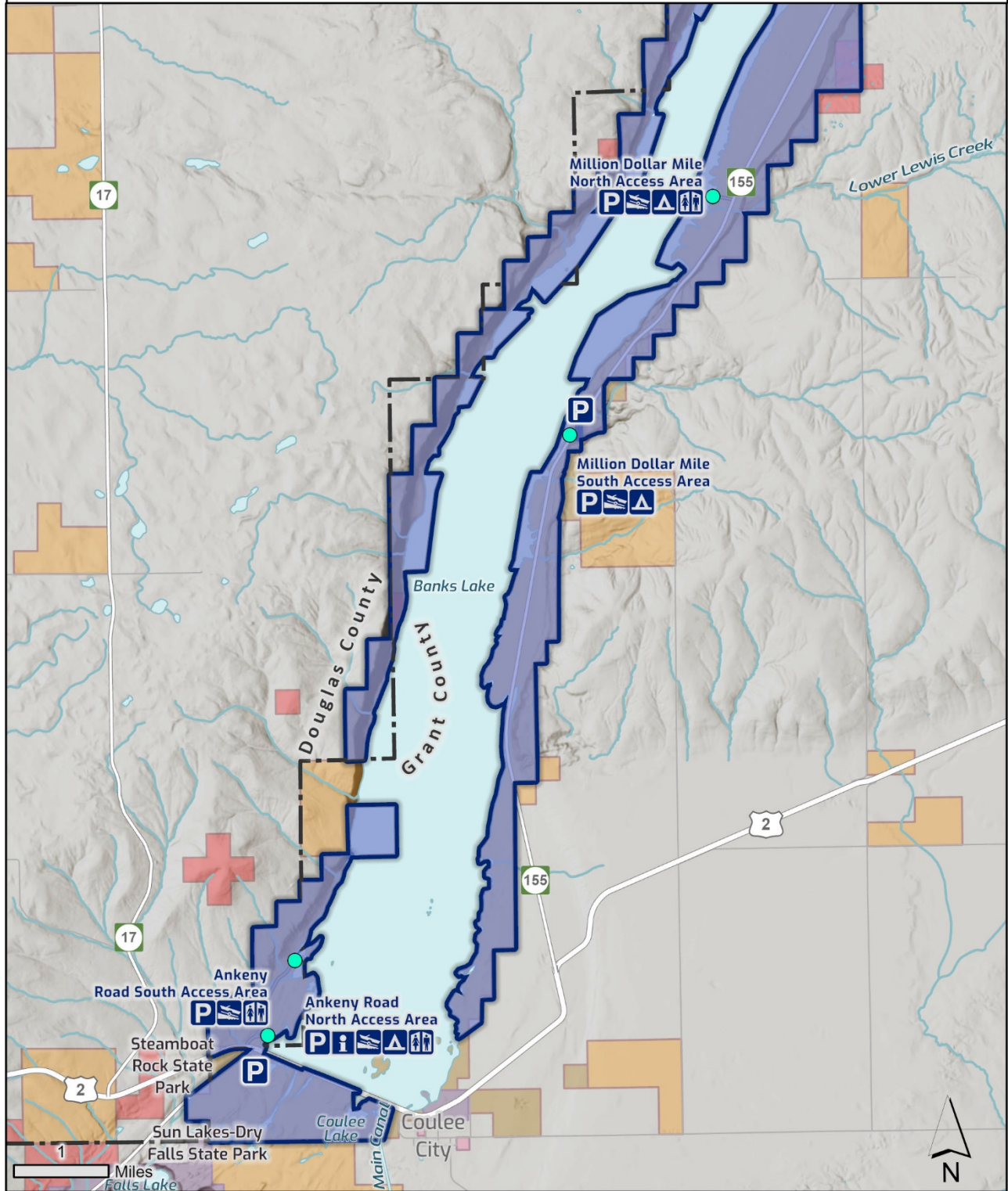




Banks Lake Unit (South)

- Draft -

10/5/2021

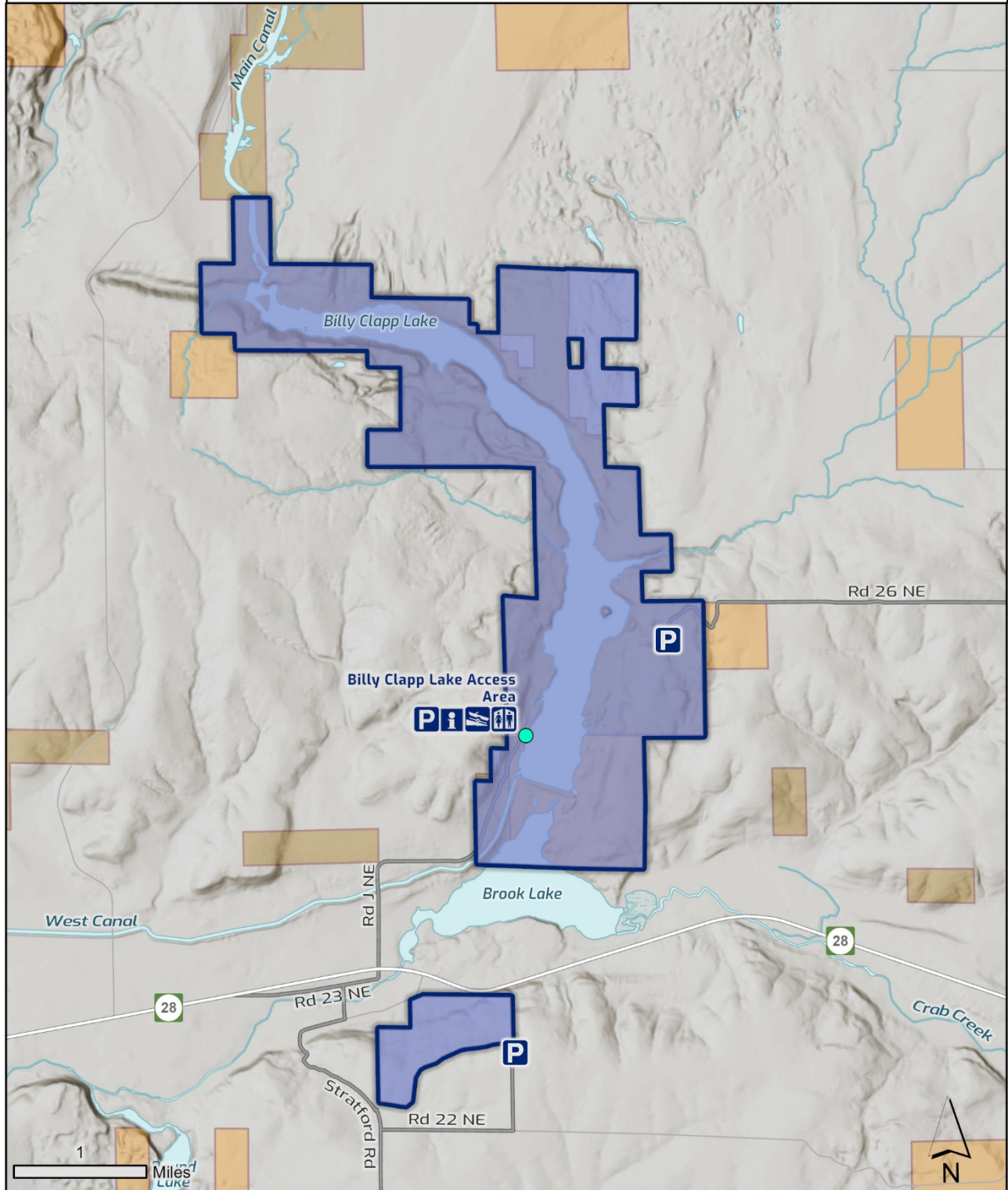




Billy Clapp Lake Unit

- Draft -

10/5/2021

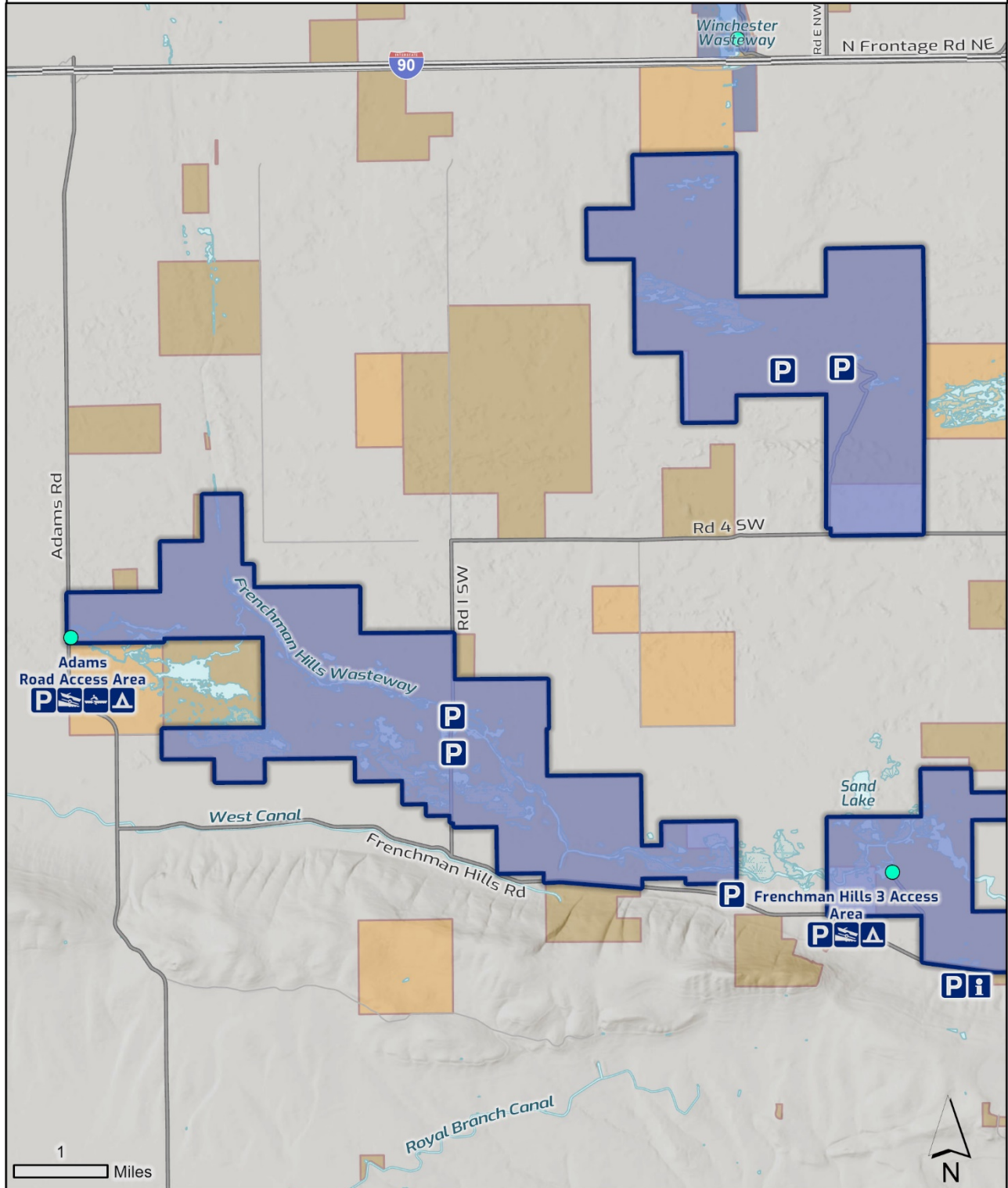




Desert Unit (West)

- Draft -

10/5/2021

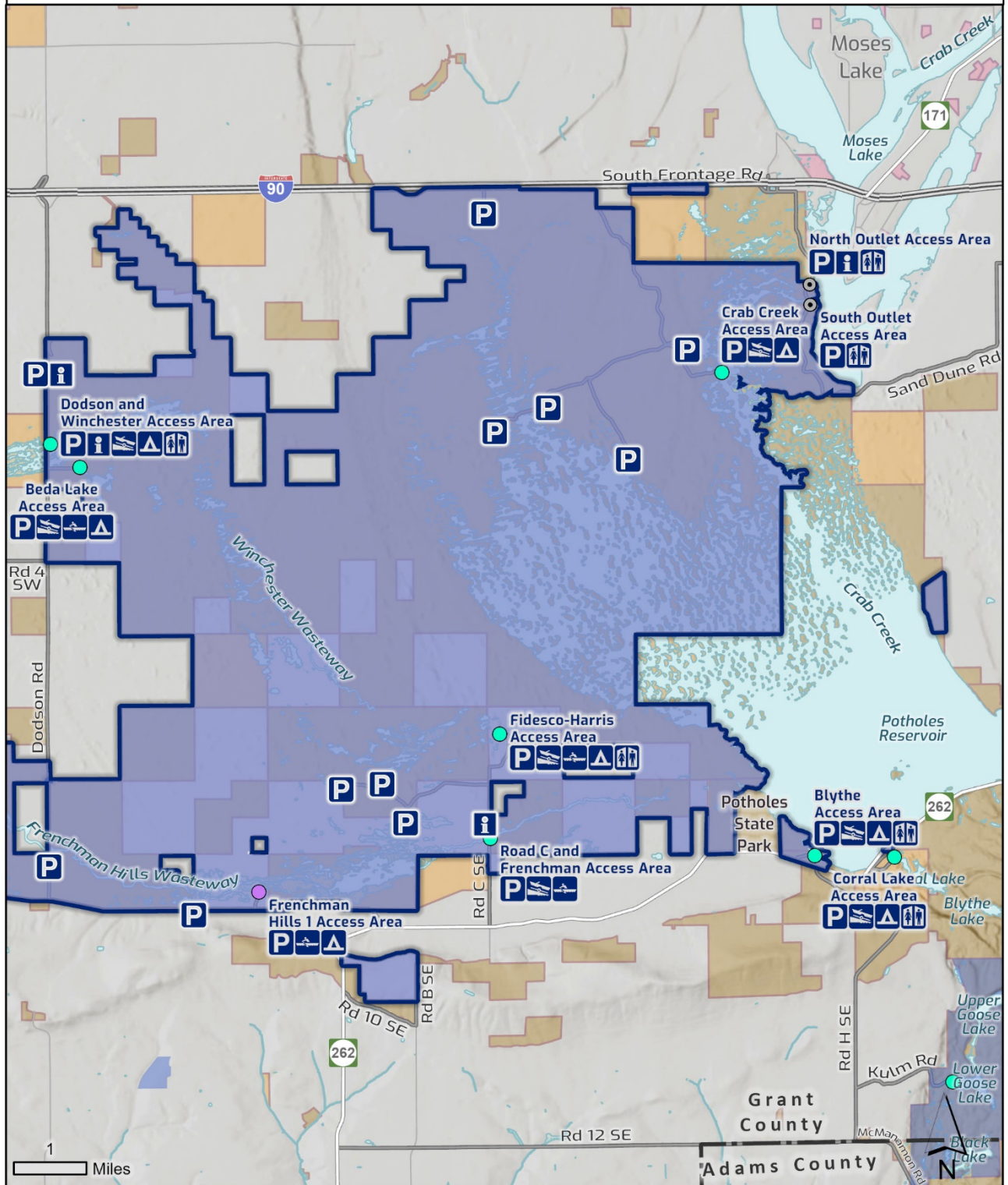




Desert Unit (Central)

- Draft -

10/5/2021

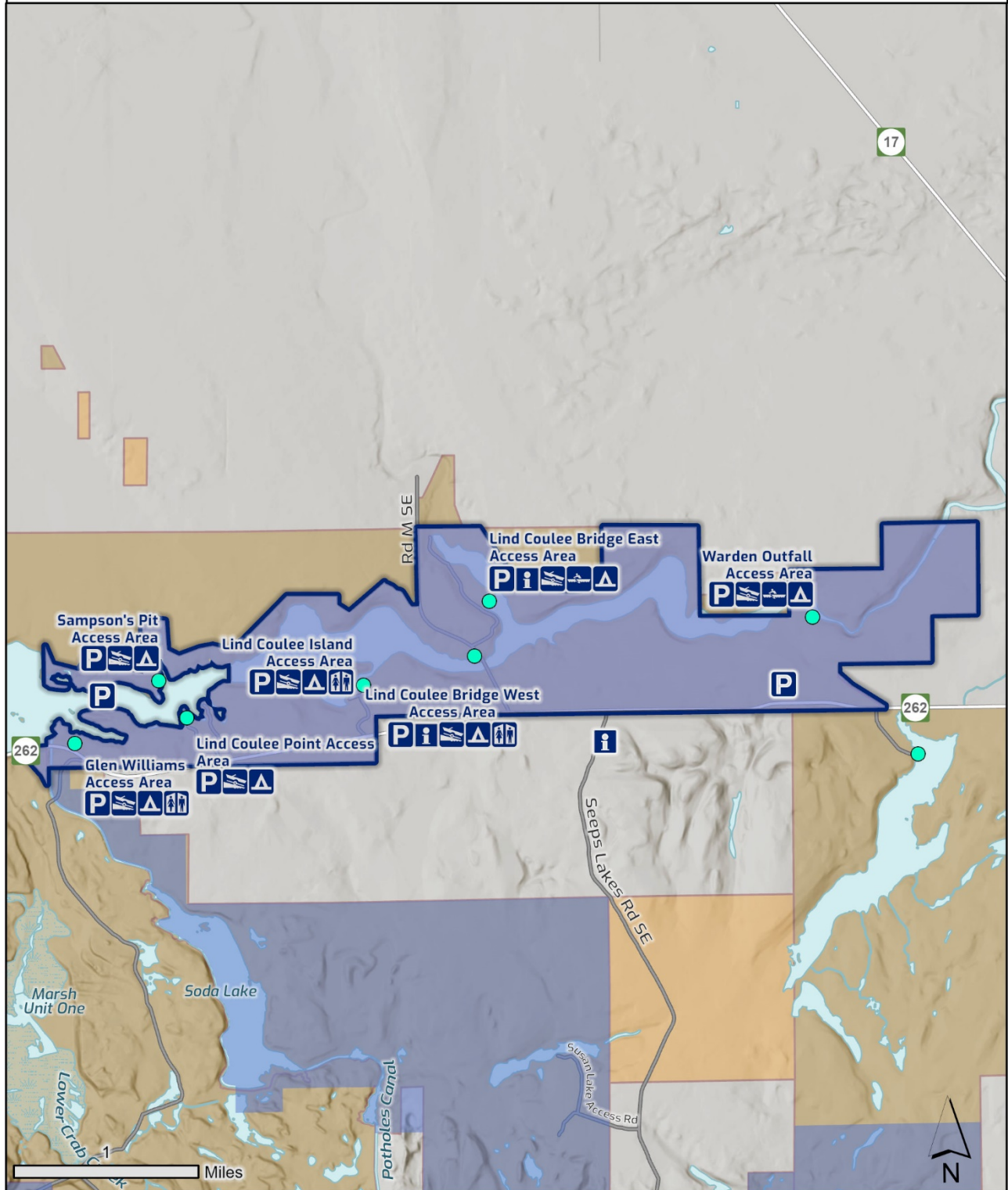




Desert Unit (East)

- Draft -

10/5/2021

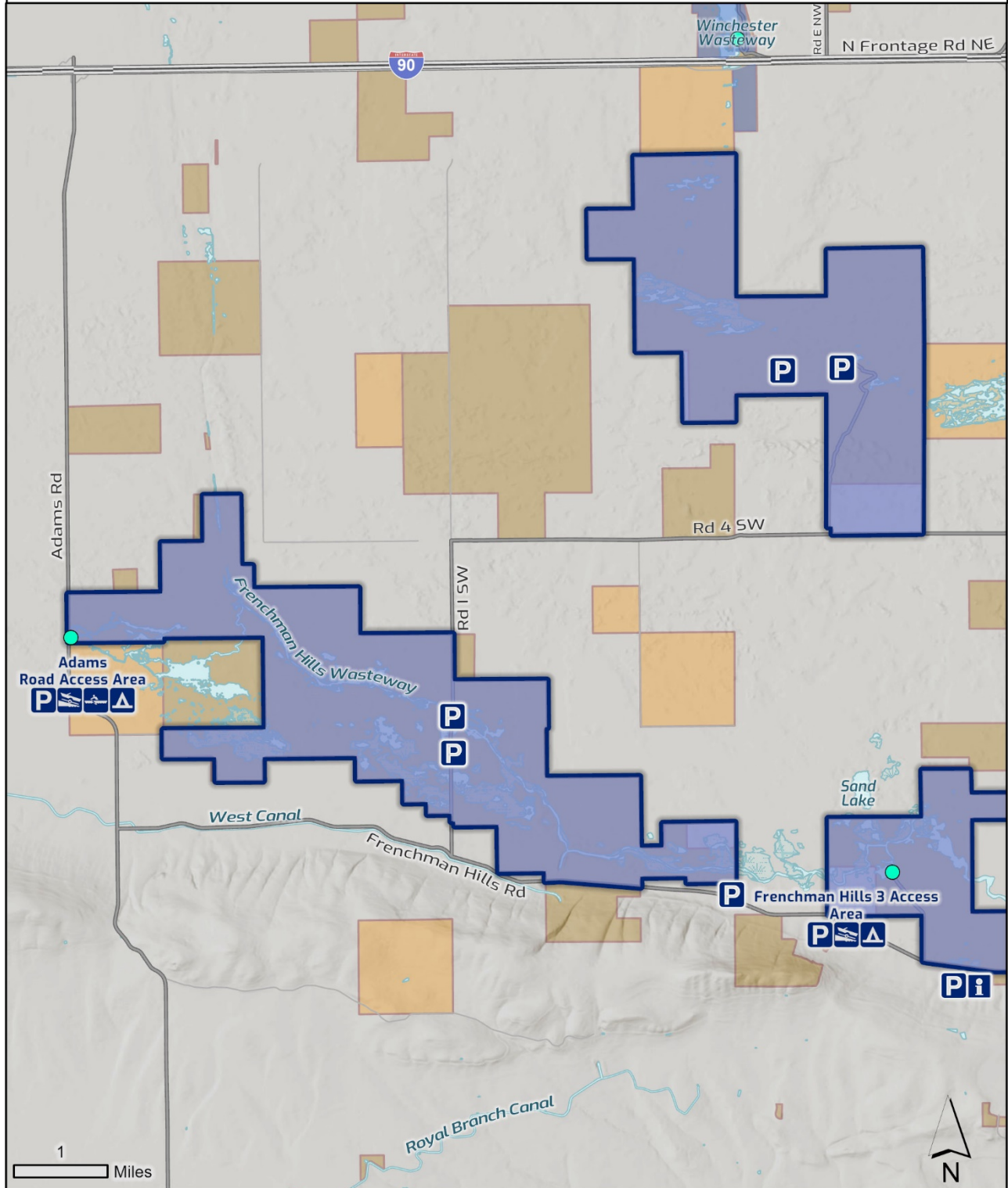




Desert Unit (West)

- Draft -

10/5/2021

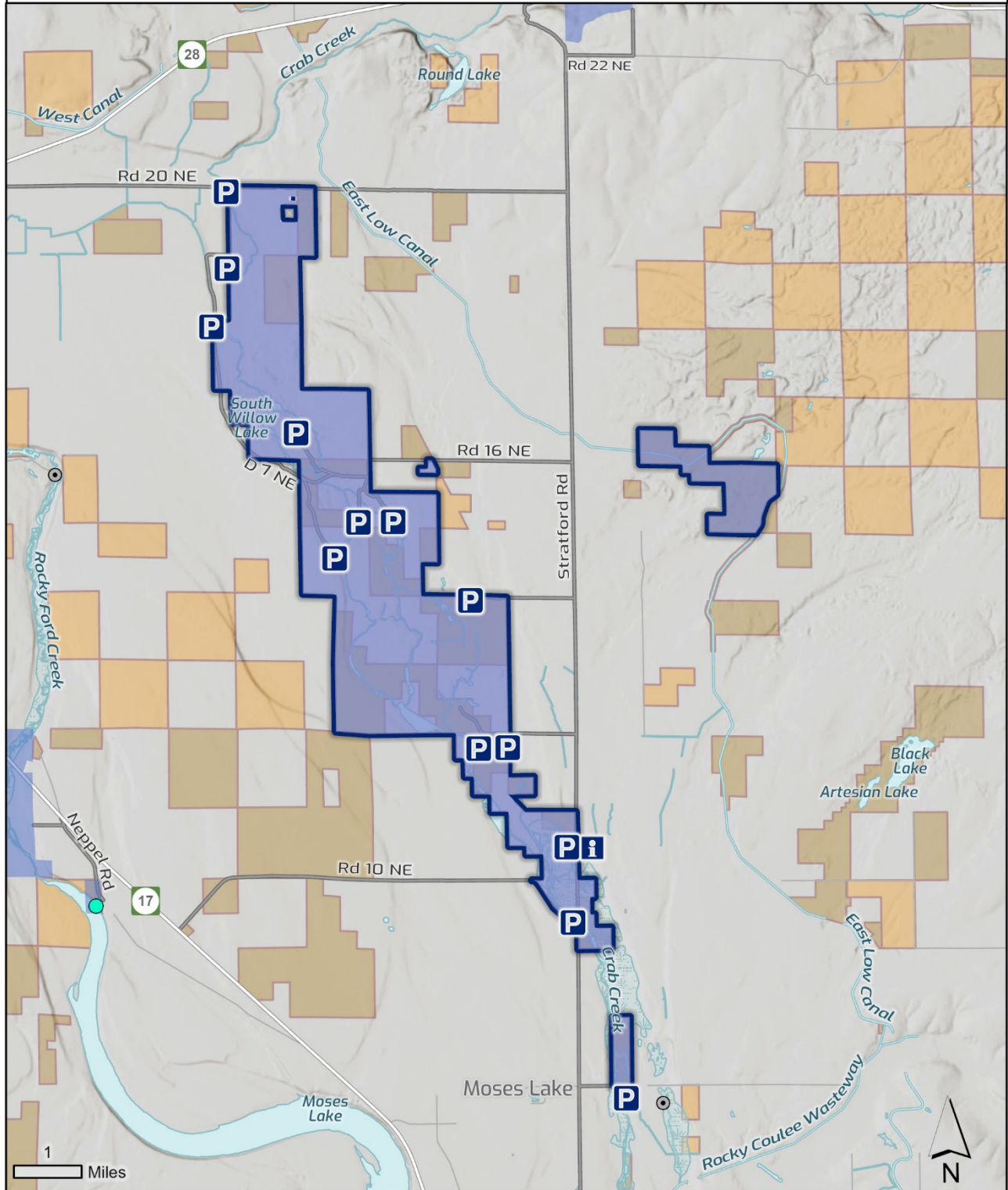




Gloyd Seeps Unit

- Draft -

10/5/2021

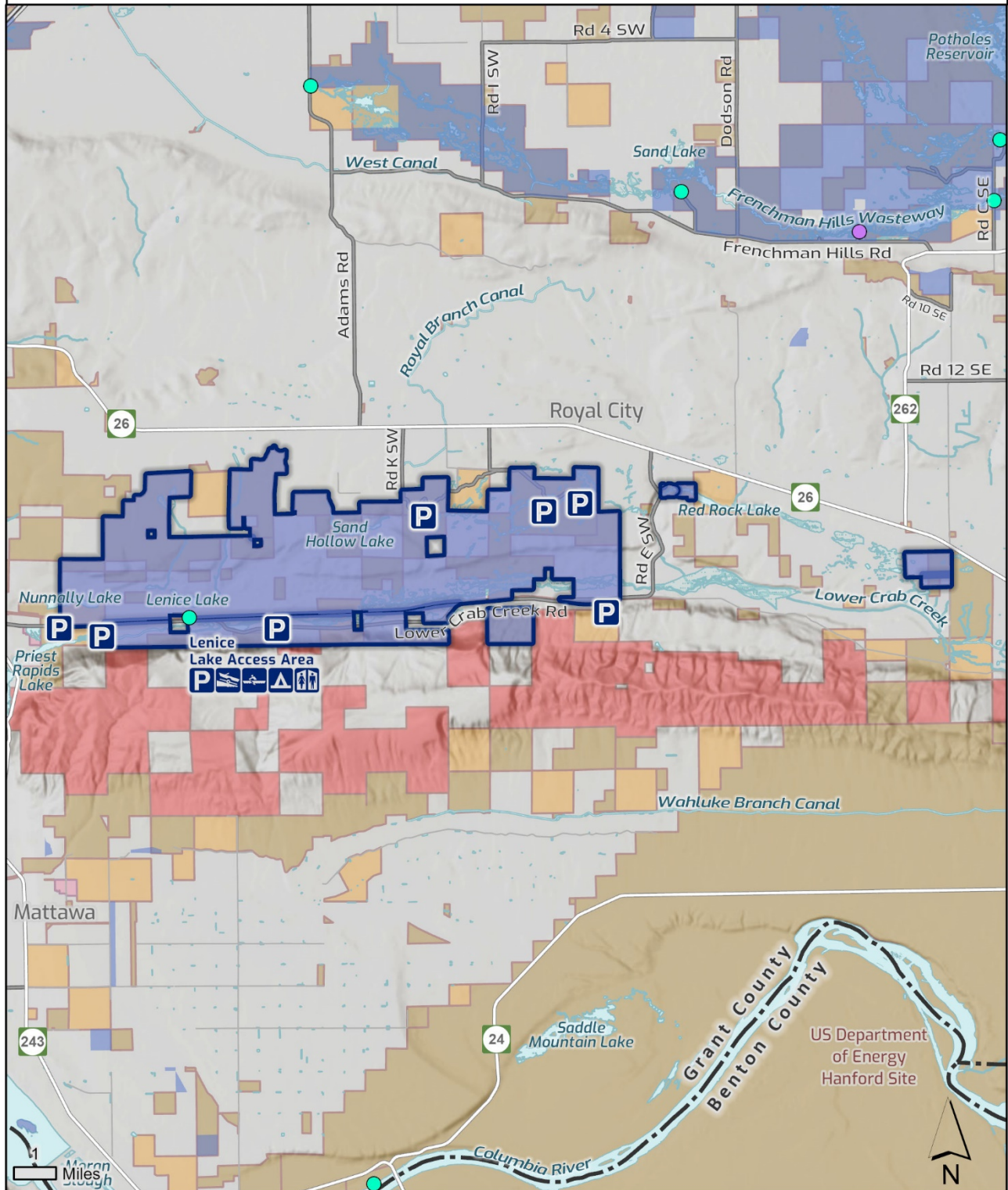




Lower Crab Creek Unit

- Draft -

10/5/2021

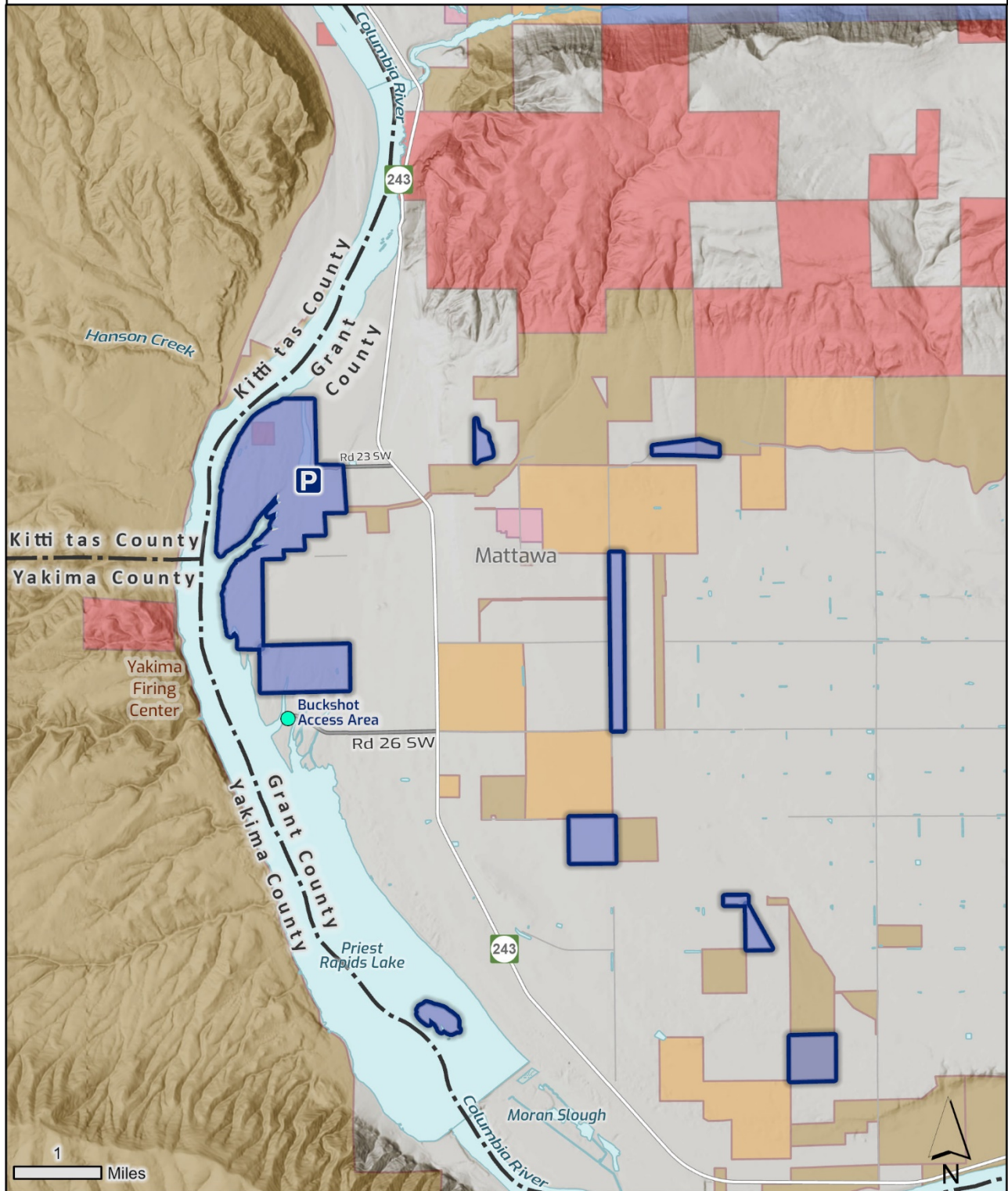




Priest Rapids Unit

- Draft -

10/5/2021

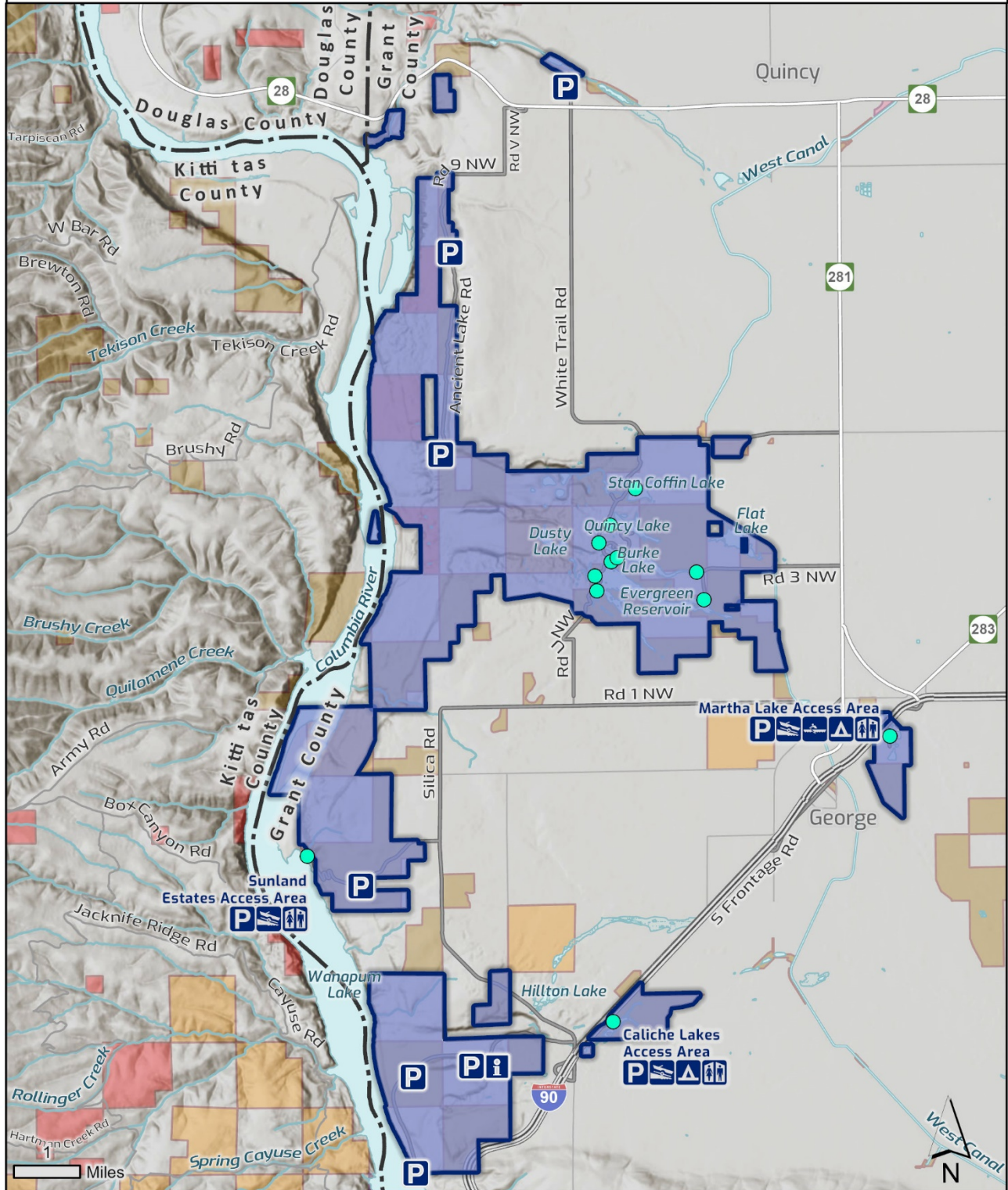




Quincy Lakes Unit

- Draft -

10/5/2021

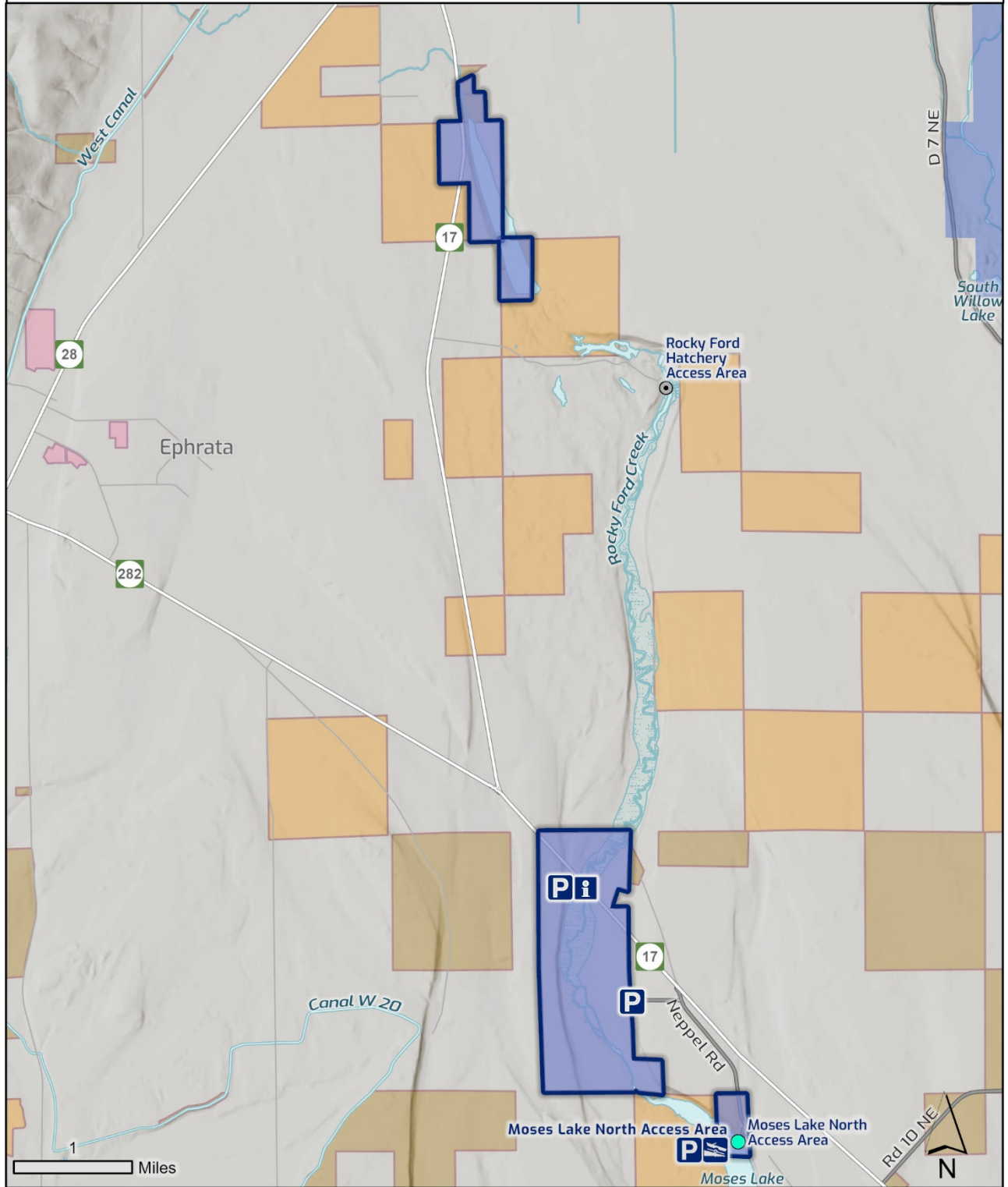




Rocky Ford Unit

- Draft -

10/5/2021

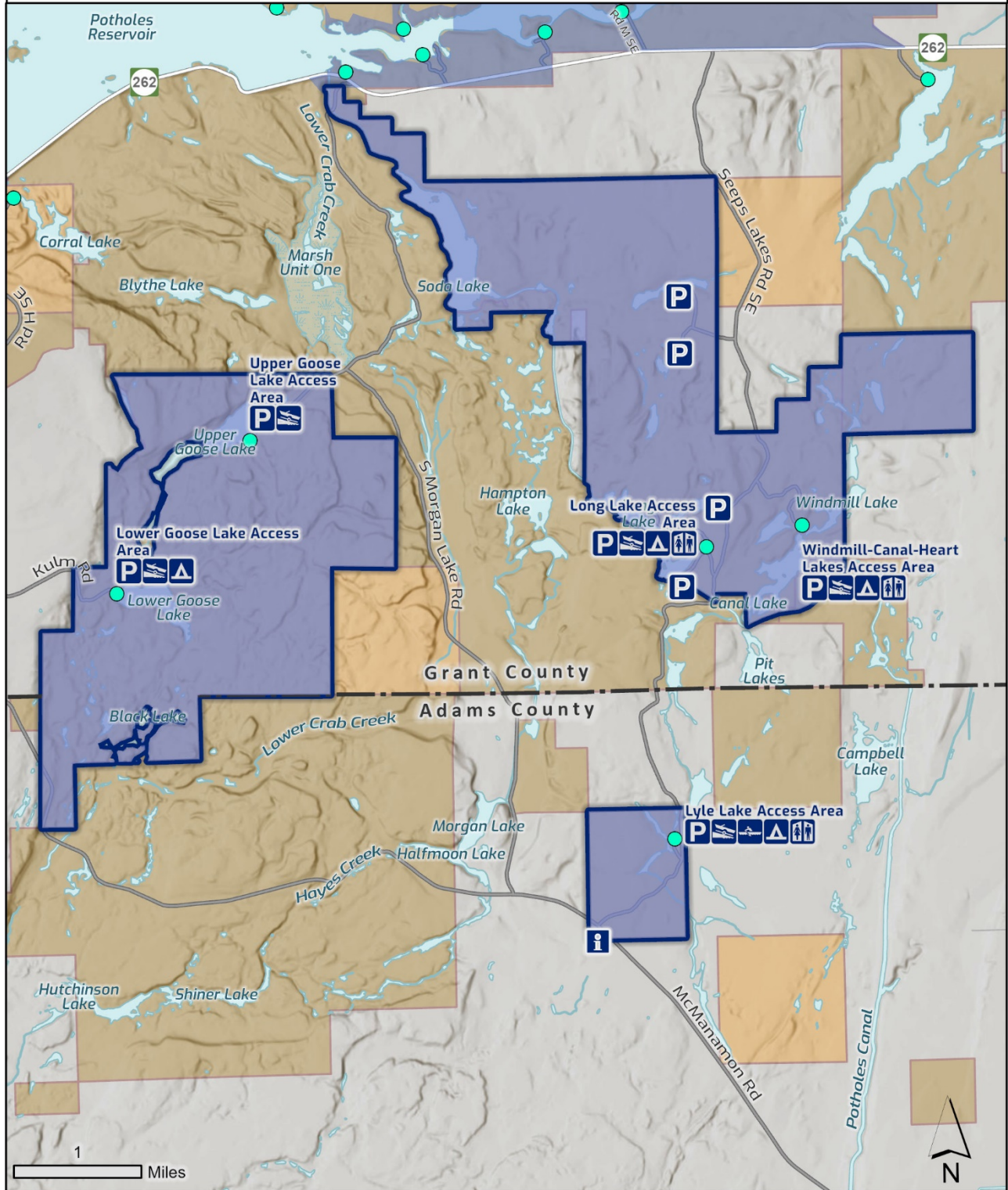




Seep Lakes Unit

- Draft -

10/5/2021

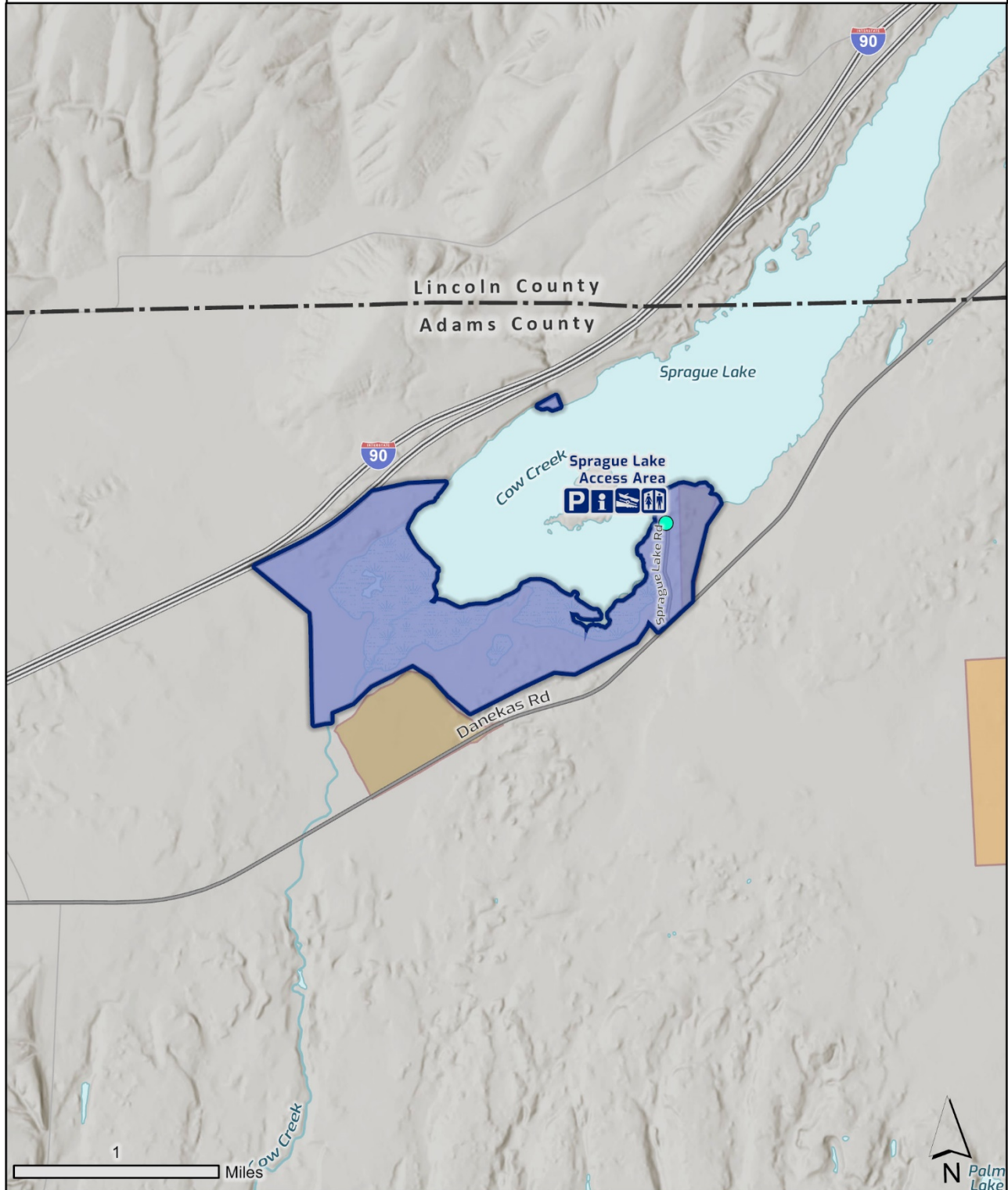




Sprague Lake Unit

- Draft -

10/5/2021

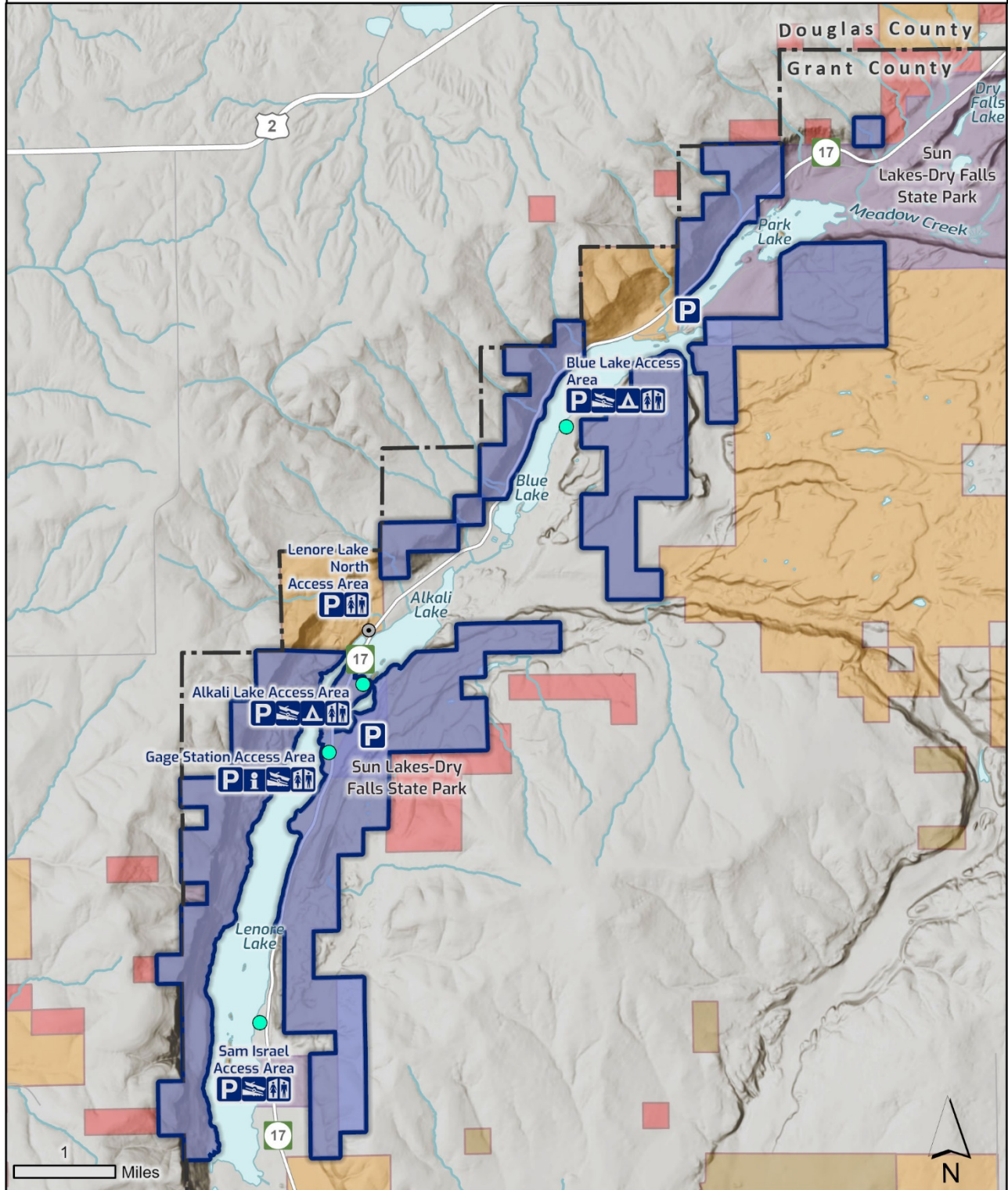




Sun Lakes Unit

- Draft -

10/5/2021

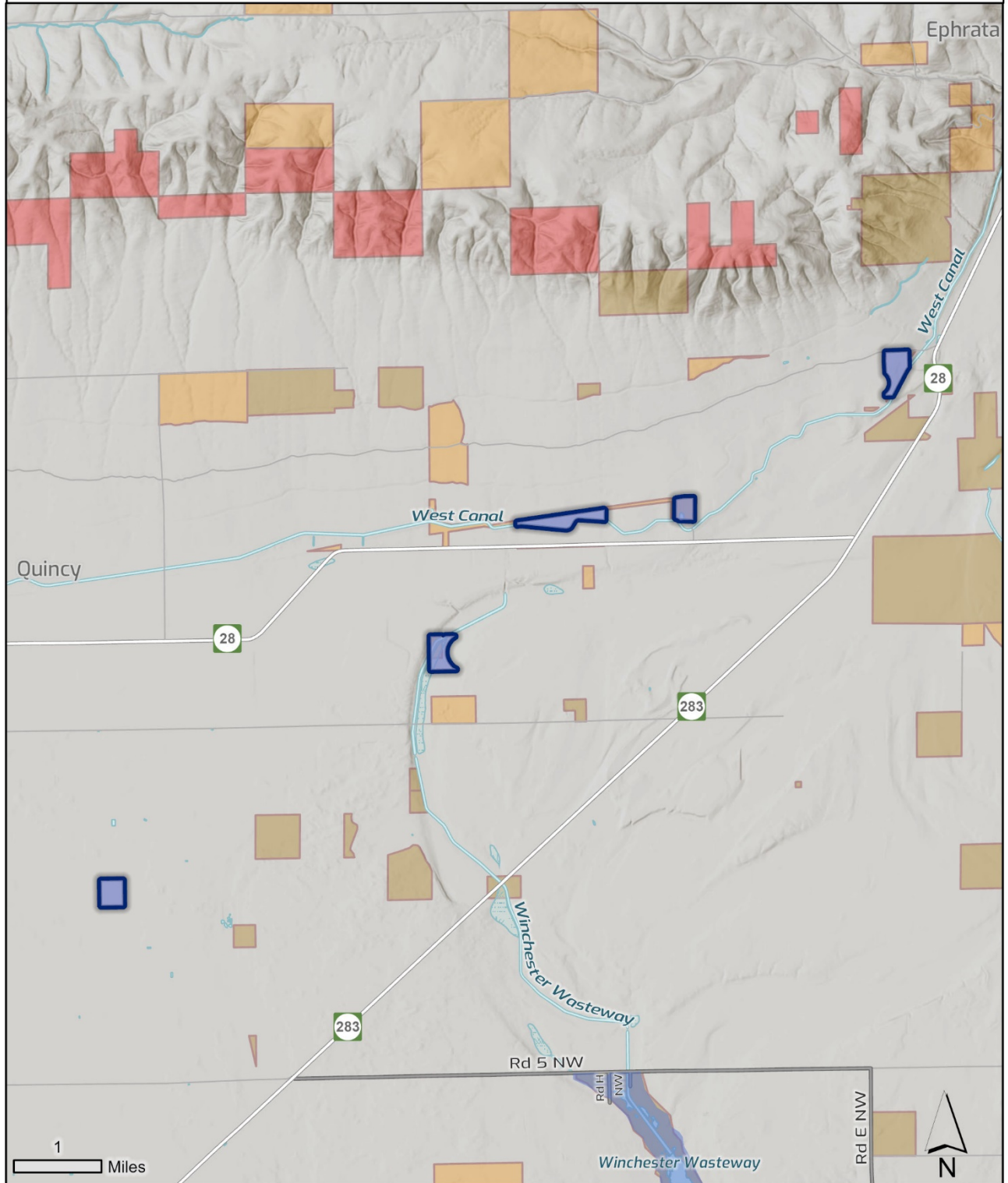




Upland Restoration Unit (West)

- Draft -

10/5/2021

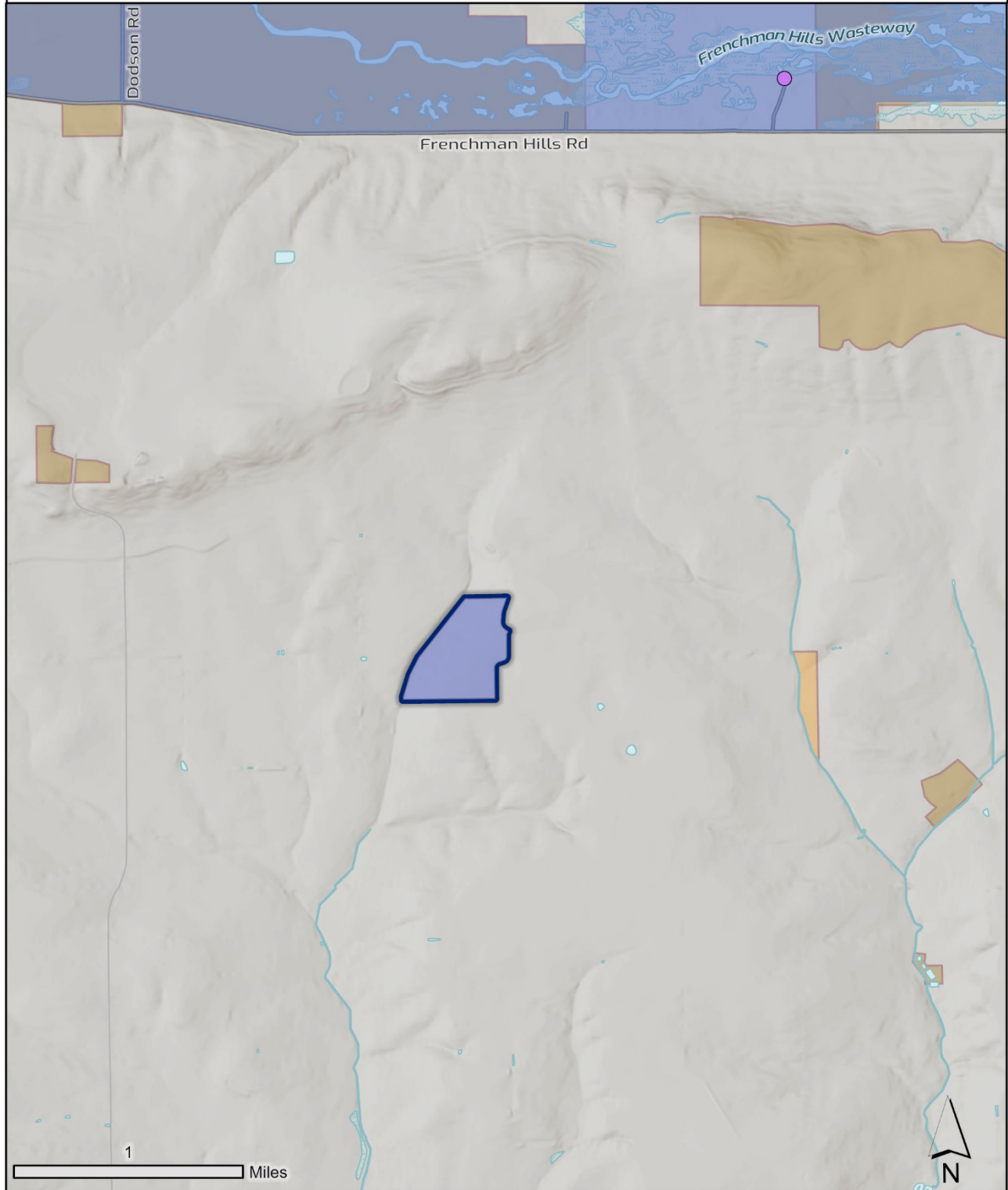




Upland Restoration Unit (Central)

- Draft -

10/5/2021

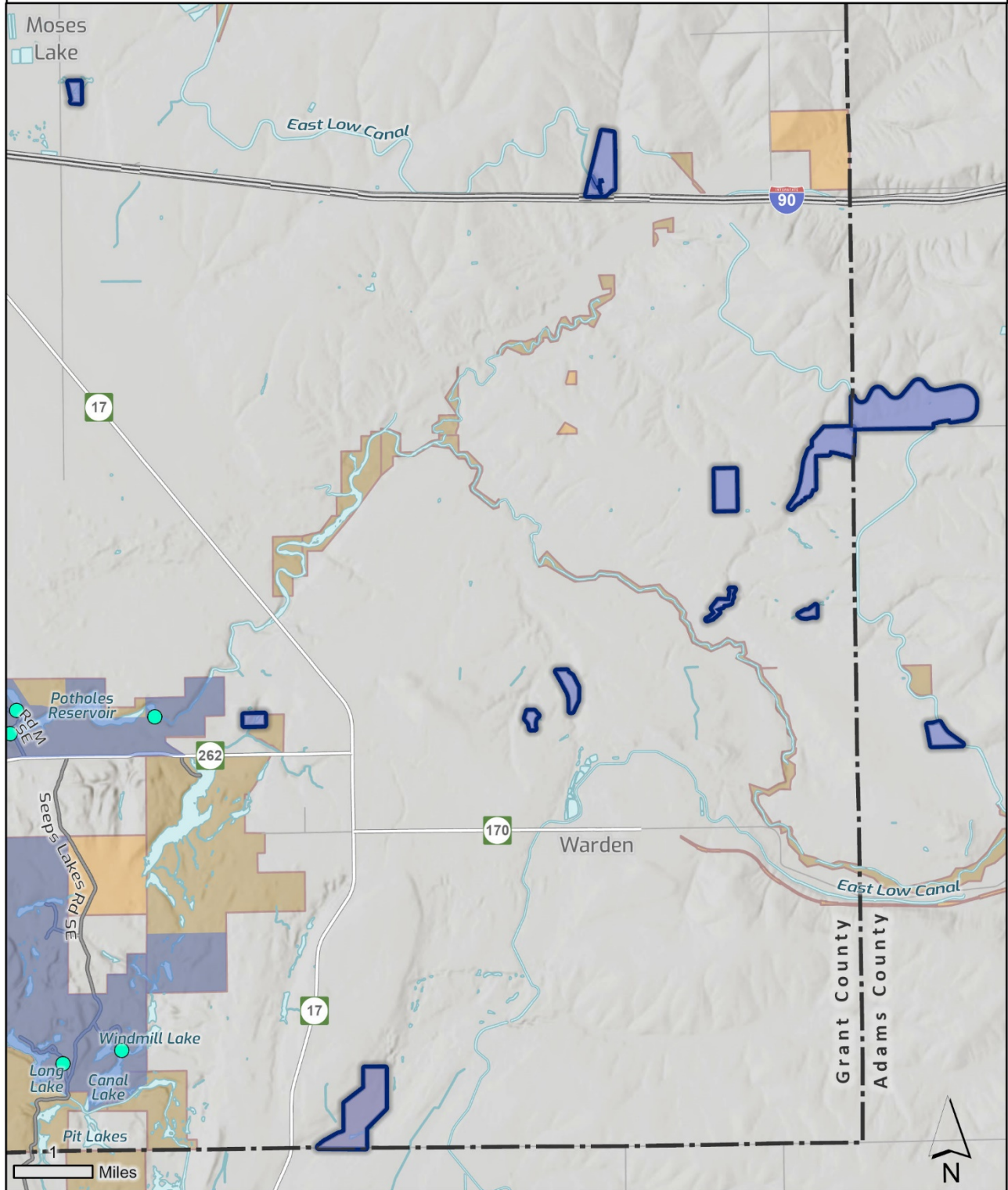




Upland Restoration Unit (East)

- Draft -

10/5/2021





Winchester Reservoir Unit

- Draft -

10/5/2021

