

Town Hall #3: Coastal Steelhead

Kelly Cunningham
Fish Program Director

James P. Losee
Region 6 Fish Program Manager



Zoom Directions and Etiquette

- All callers will be muted upon entry.
- You can type a question through the Q&A function or ask a question by “raising your hand.” If you’re calling in you can raise a hand by dialing *9 on your phone, or if you're calling from a computer, you can find the hand icon at the bottom of your screen.
- When you are called on for a question or comment, we encourage you to speak up and provide comments live. To speak you will need to unmute yourself by using the mute button on your computer or mobile device or enter *6 if you’re calling from a land line.
- Please limit questions to one at a time.
- If you have a technical issue during the webinar, please drop us a note in the chat and we will help you through it.
- Be respectful of others
 - Be tough on issues and questions, not on people or organizations
 - No personal attacks, insults or threats
 - Listen and assume positive intentions from those speaking.
 - Speak and act professionally – no offensive, disrespectful, or derogatory language, including profanity
- Assume Positive Intentions
- Share questions or comments in written format online at wdfw.wa.gov/coastal-steelhead
- Please limit questions to one at a time.



2021/22 Pre-season schedule

- Mid July: Survey data exchange with tribal comanagers
- **July 28th Town Hall #1:** Coastal Steelhead Town Hall and Workshop
- Mid August: Spawning Escapement Estimates Finalized
- Early September: Exchange pre-season forecasts with Tribal Co-Managers
- Early October: Pre-season Forecasts Agreement with Tribal Co-Managers
- Mid October: Comanager policy meetings to develop Management Plans
- **October Town Hall #2:** Final escapements and preliminary forecasts
- **November Town Hall #3: Final pre-season planning**
- Mid November: Finalize Management Plans with tribal comanagers
- November 17th: Briefing FWC Fish Committee
- ~~November 19th: Briefing of Fish and Wildlife Commission~~
- **Late November Town Hall #4:** Communicate Director's decision on agreed to fishing plans
- December 1: Announce winter fishing rules

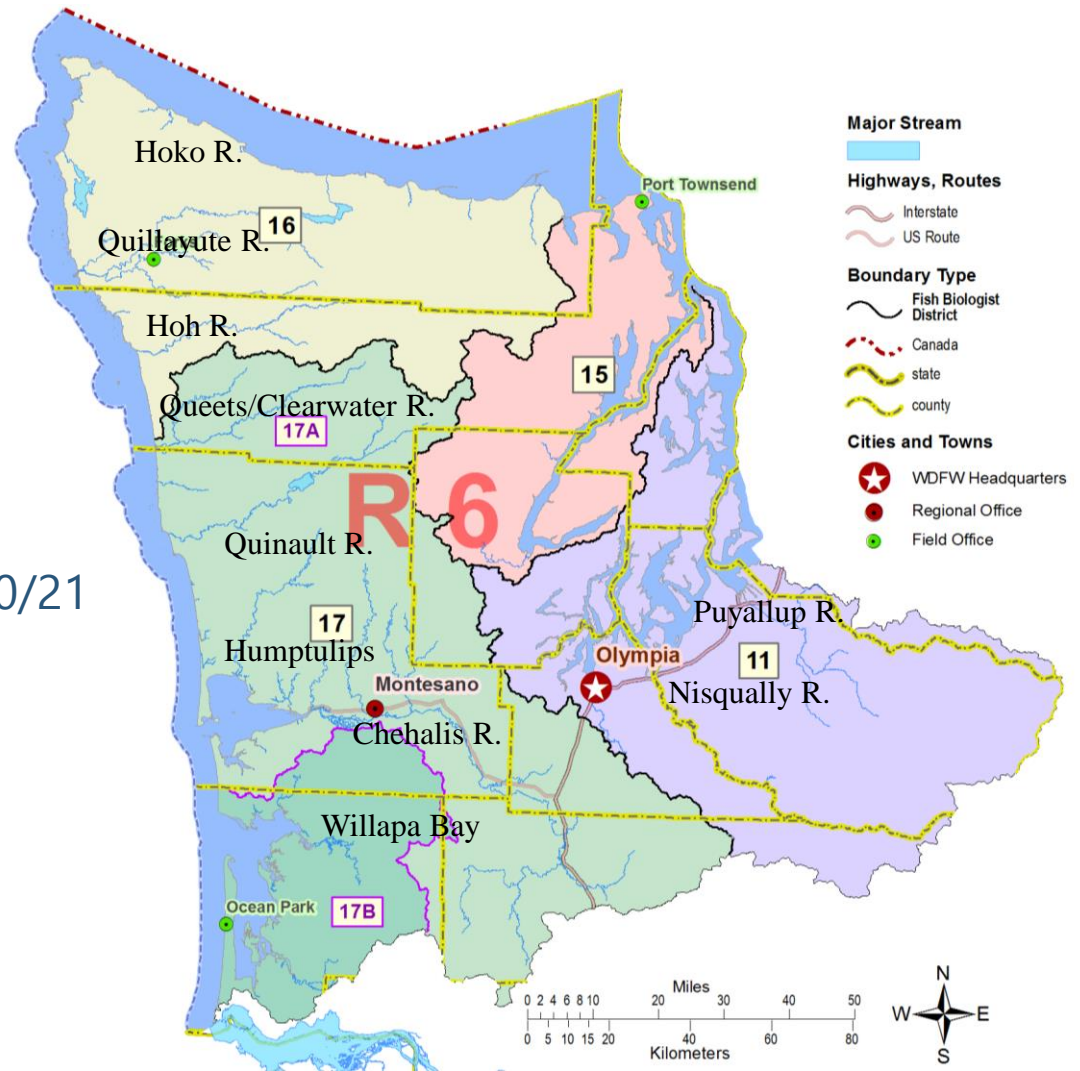


Agenda

Background and Updates

Management framework and 2020/21 review

2021-22 regulatory options

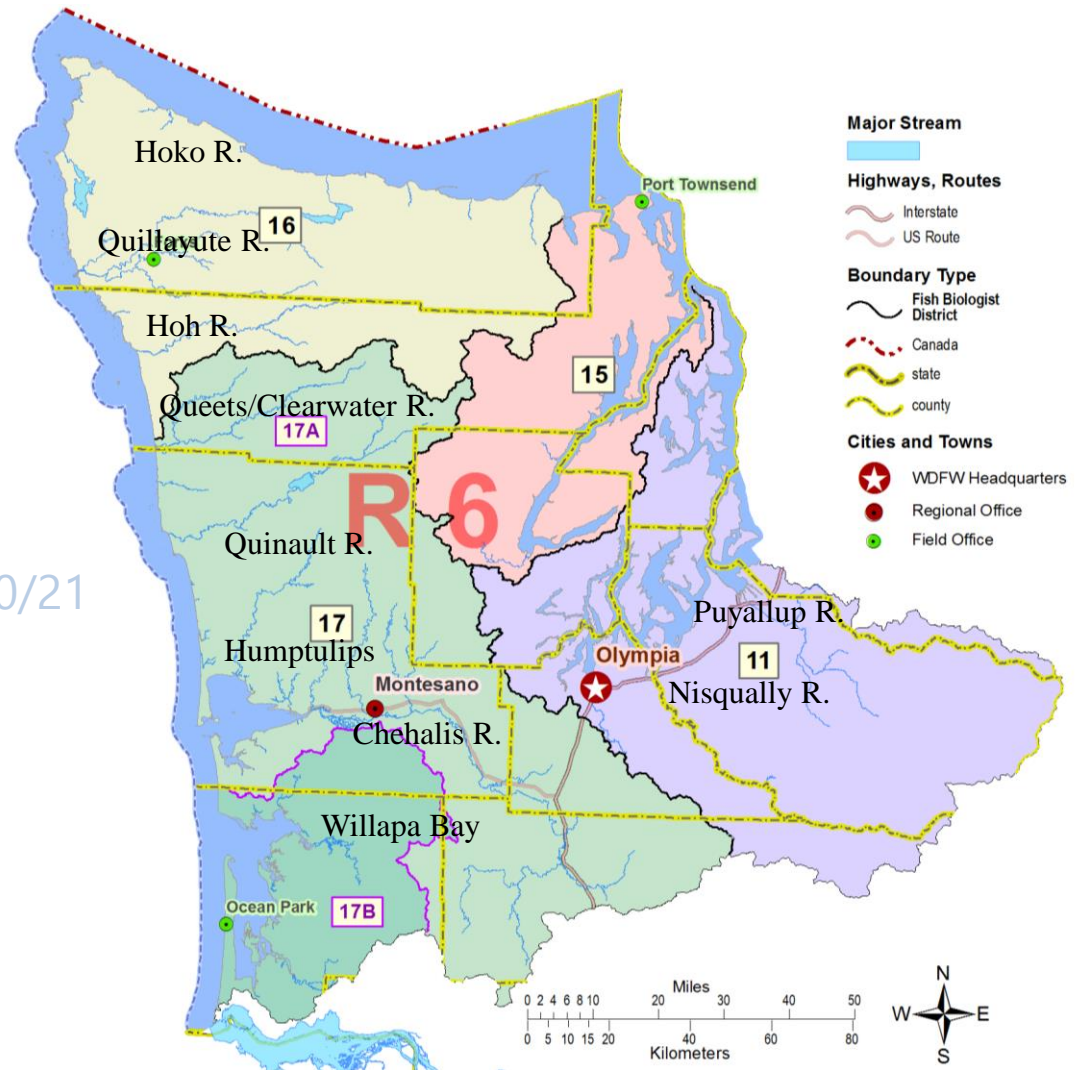


Agenda

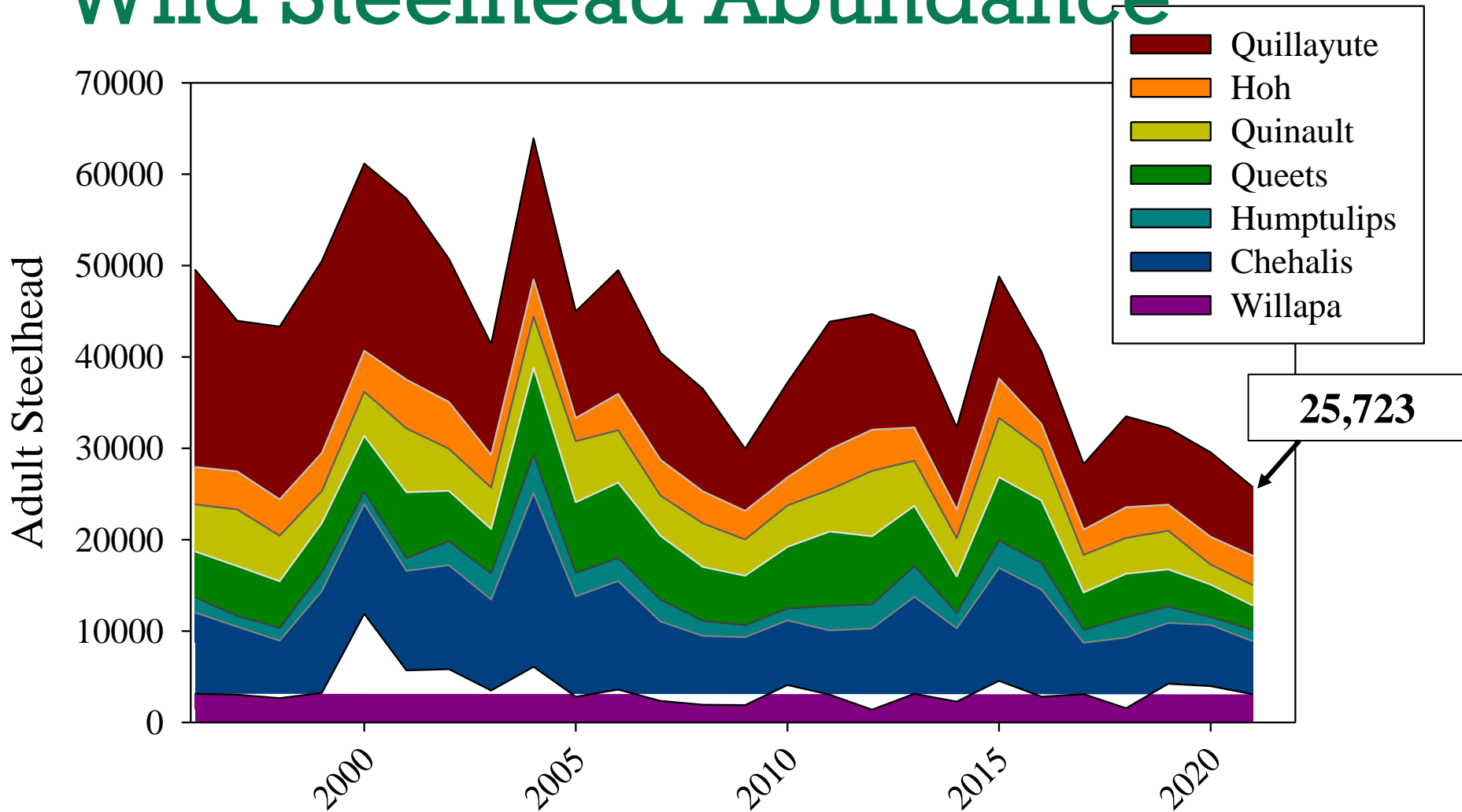
Background and Updates

Management framework and 2020/21 review

2021-22 regulatory options



Wild Steelhead Abundance



2021 total returns to the Washington Coast were the lowest on record.



2020/21 Review

River/Area	Predicted Runsize	Actual Runsize	Escapement	Escapement Goal
Willapa	3,862	3,004	2,989	4,206
Chehalis	6,600	5,793	5634	8,600
Humptulips	1,066	1,273	1238	1,600
Upper Quinault	1,725	1,538	1262	1,600
Queets/Clearwater	3,563	2,646	2044	4,200
Hoh	2,903	3,222	2820	2,400
Quillayute	9,276	7,494	6,675	5,900



Overforecasted in 2020/21 by ~14% and escapement goals not met in 5 of 7 rivers.



2021/22 Forecasts

System	Run-to-River Forecast	Escapement Goal	Wild Steelhead Relative to Goal	Sport Impact Limit
Willapa	3,188	4,206	-1018	319
Chehalis	5,681	8,600	-2919	141
Humptulips	1,343	1,600	-257	67
Upper Quinault	1,128	1,600	-472	56
Queets/Clearwater	3,203	4,200	-997	160
Hoh	3,141	2,400	741	371
Quillayute	8,516	5,900	2,616	1,308



Hatchery forecasts

Run Type	Facility	2021/22 Forecast
Early-winter	Naselle	459
	Humptulips/Wishkah	1,837
	Forks Creek/Stringer creek	1,115
	North River	59
	Hoh River	947
	Bogachiel	4169
Late Winter	Bingham	715
	Skookumchuck & outplants	2,169
	Eight Creek and Carlisle Lake	1,234
	Lk Aberdeen	2,332
	Quinault R. Quinault Tribe	5,600
	Queets River	2,186
	Bogachiel	578



Sport Fishery Modeling- Considerations/Constraints

- Limited in-season tools
- Effort shift uncertainty
- Recent history of over-forecasting
- Tribal comanagement
- No estimates of mortality associated with poaching
- No unbiased estimate of total sport impact

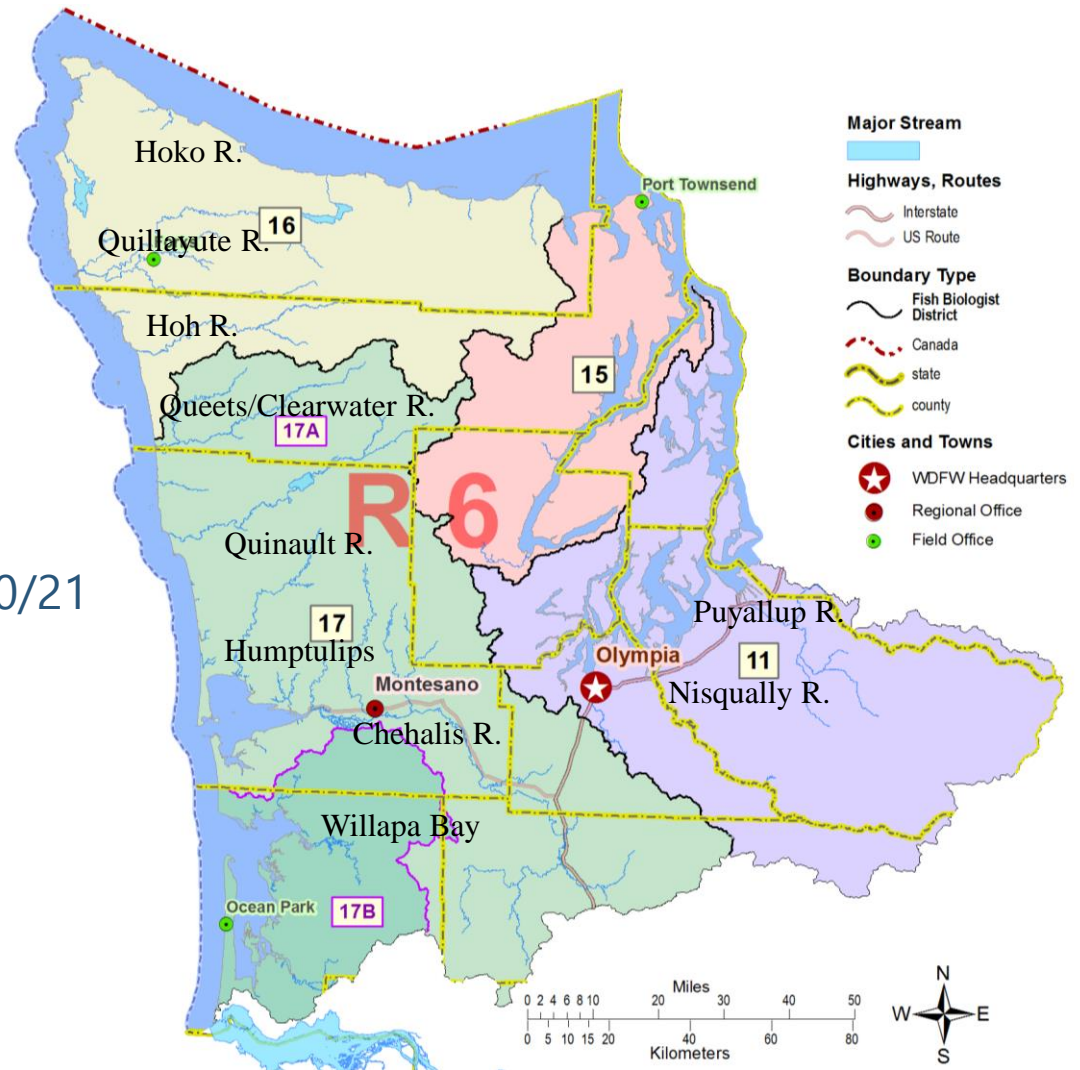


Agenda

Background and Updates

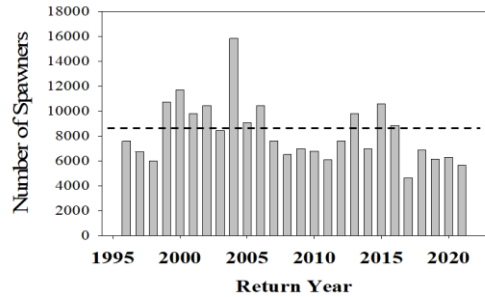
Management framework and 2020/21 review

2021-22 regulatory options

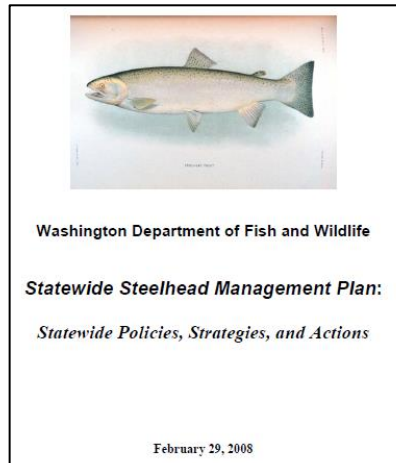


Statewide Steelhead Management Plan

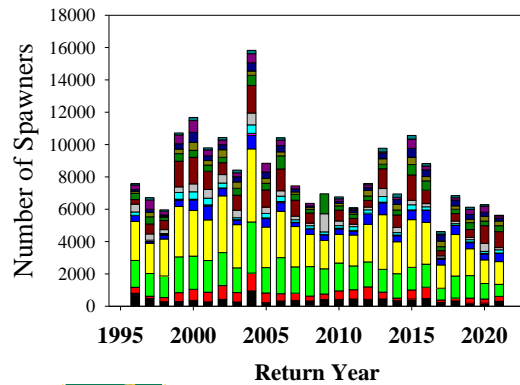
Abundance



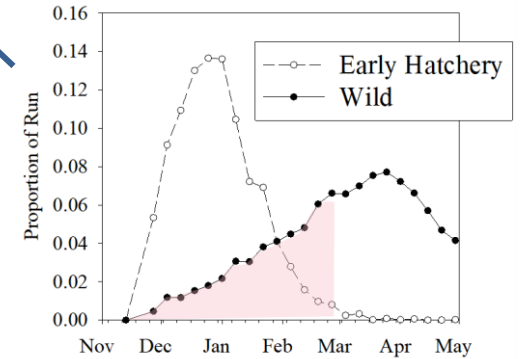
Productivity



Diversity



Distribution

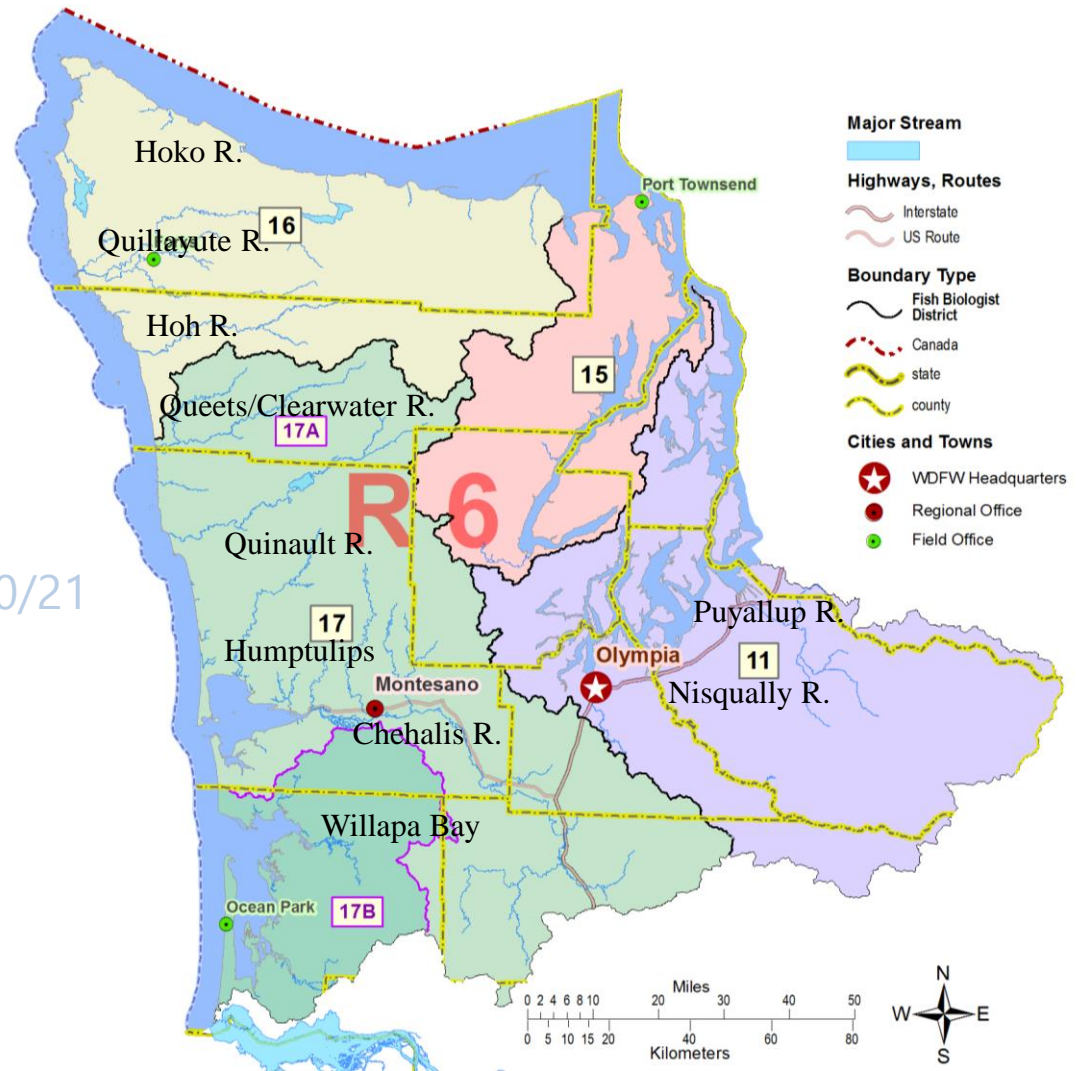


Agenda

Background and Updates

Management framework and 2020/21 review

2021-22 regulatory options



WDFW Web Portal

Share feedback with WDFW fishery managers:

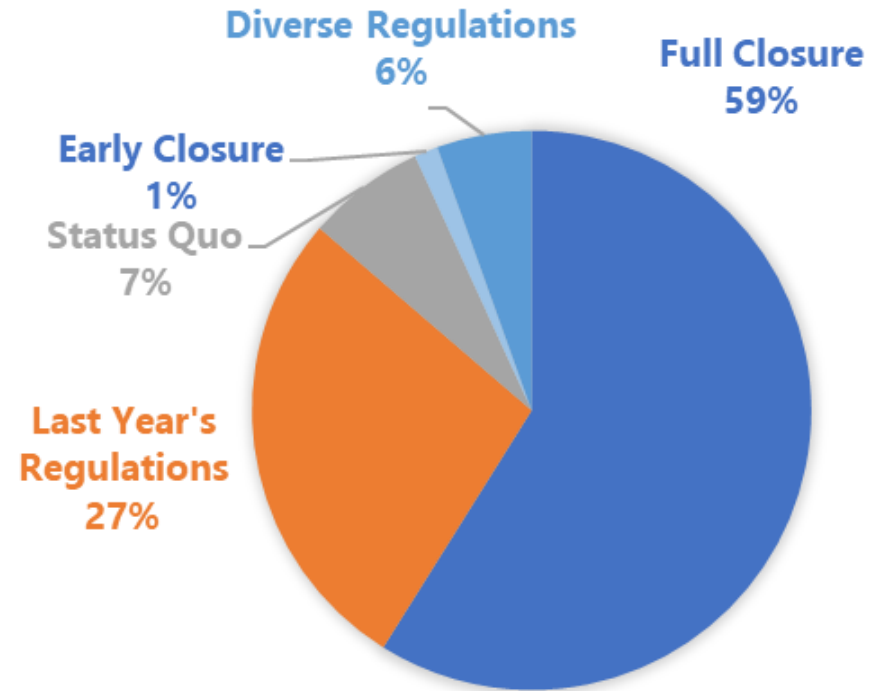
[Translate](#)

Please provide any general comments you may have regarding **coastal steelhead management**.

Your name (optional)
Name

Allow admin to make my comment public

[Click here to submit your comment to Washington Department of Fish and Wildlife](#)



120 total comments

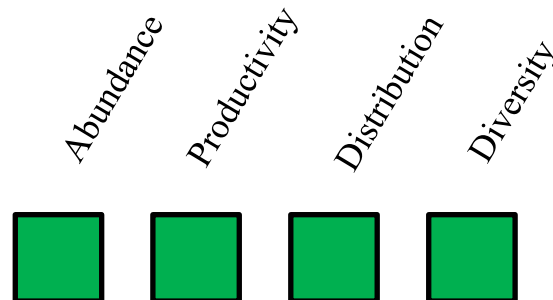
- Other themes
 - Improve sport fishery monitoring
 - Improve abundance estimates through trapping and technology
 - Including poaching in estimates of catch
 - Control marine mammals
 - Release more hatchery fish



2021/22 Fishery Proposals

1. Coastwide closure
2. Status Quo
3. Last year's regulations
4. Fishing from a boat with reduced days
5. Fishing from a boat in select waters
6. Fishing from boat reduced hours
7. No Fishing from a boat with reduced days

Other ideas/tools: Bag limit reduction, open during hatchery run only (close early), bait restrictions.



Proposal #1.

Coastwide Closure

Description: Closed to fishing in coastal rivers December 1-April 30

Pros:

- Maximum protection for wild steelhead.
- Enforcement simplicity
- Potential for late opening if indications in-season that run is coming in larger than expected.

Cons:

- Limited access to hatchery origin returns.
- Closure on rivers where escapement goal is likely to be met (Quillayute R.).
- Impact to economy of coastal communities.
- Displaces important advocates, anglers.



Proposal # 2

Status Quo

*Description: **Release all wild steelhead.** Hatchery steelhead **daily limit 2-3**, **Gear type:** Variety of regulations including barbless hooks, no bait, single hook and no fishing from a floating device in select waters. **Closure day:** range from last day in February to April 15th, **Rainbow Trout:** Catch and release or minimum size 14”.*

Pros:

- Maximizes regulation diversity.
- Maximum access to hatchery and wild steelhead.

Cons:

- Exceeded objectives in recent years (escapement and/or exploitation rate).
- Static regulation in the face of declining abundance and increased effort.



Proposal #3.

Last Year's Regulation

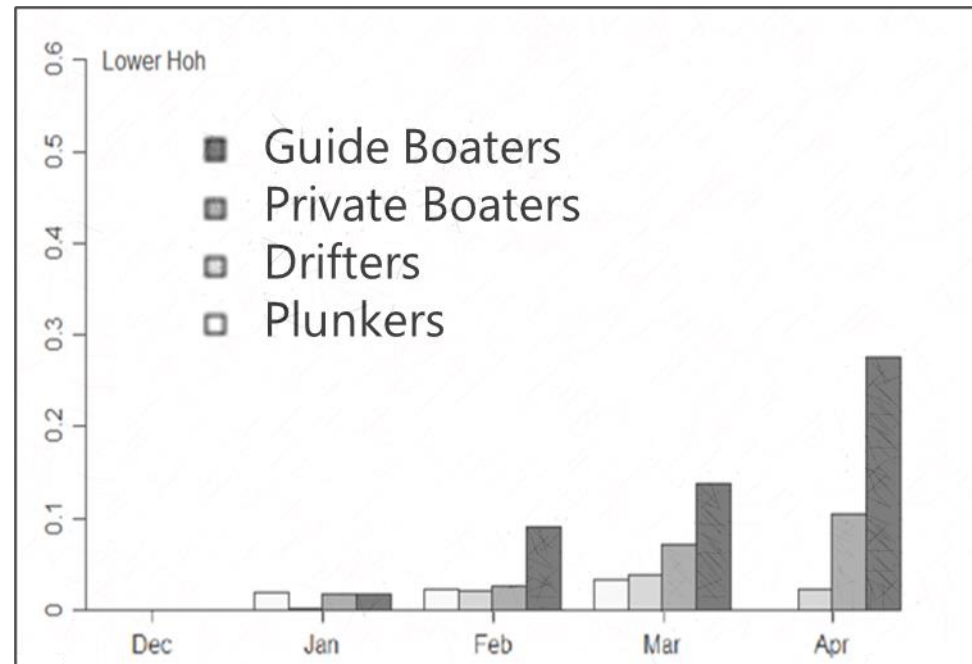
Description: Bait restriction, no fishing from a floating device, release rainbow trout, close March 31.

Pros:

- Maximizes time on the water.
- Consistently protects steelhead in all areas, times and at all life stages within a river.
- Allows for harvest of early and late-timed hatchery steelhead.

Cons:

- Displaces some user groups.
- Enforcement challenge.



Bentley et al. 2017



Proposal #4.

Fish from a boat with reduced days

Description: Fishing from a floating device. Open 1 (Sundays) to 3 (Tuesday-Thursday) days a week.

Pros:

- Maintains diverse opportunity in the face of significant conservation concern.
- May allow for harvest of early and late-timed hatchery steelhead.

Cons:

- Uncertainty around catch reduction and shift in effort
- Option with least days on the water.
- Concerns from tribal comanagers.



Proposal #5.

Fish from a boat in select waters

Description: Fishing from a floating device 7 days a week in select waters

Pros:

- Allows for diverse user groups and opportunities.
- Liberalize opportunity strategically in areas where it is possible.

Cons:

- Uncertainty around catch reduction and shift in effort
- Option with least days on the water.
- Concerns from tribal comanagers.
- Emergency closure may disproportionately affect early portion of run



Proposal #6.

Fish from boat reduced hours

*Description: Open to traditional gear regulations with limited hours. **Open sunrise to noon.***

Pros:

- Allows for diverse user groups.
- May allow for harvest of early and late-timed hatchery steelhead.
- Enforcement simplicity.

Cons:

- Uncertainty around catch reduction and shift in effort.
- Angler satisfaction i.e. crowding.
- Displaces some user groups.
- Emergency closure may disproportionately affect early portion of run



Proposal #7.

No Fishing from a boat and reduced days.

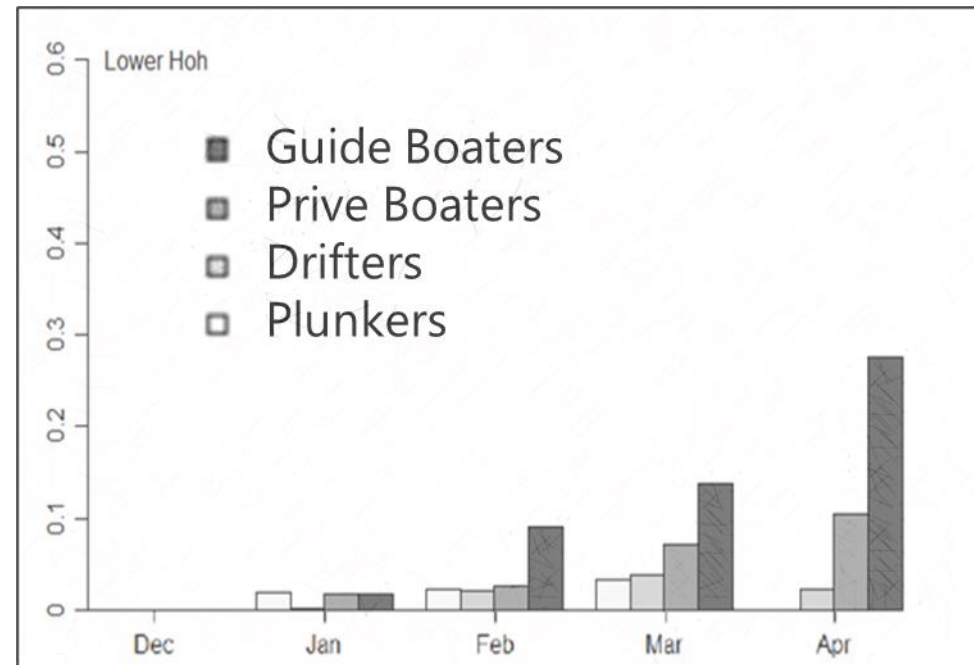
Description: Bait restriction, no fishing from a floating device, release rainbow trout, close March 31.

Pros:

- Maximizes time on the water.
- Consistently protects steelhead in all areas, times and at all life stages within a river.
- Allows for harvest of early and late-timed hatchery steelhead.

Cons:

- Displaces some user groups.
- Enforcement challenge.



Bentley et al. 2017



Analysis of Options

System	Sport Impact Limit	Full Closure	Status Quo	Last Year's Regulation	Fish from boat reduced days	Fish from boat in select waters	Last Year's reduced hours
Willapa	319	Closed	Closed	Open	Open	Closed	Closed
Chehalis	141	Closed	Closed	Closed	Closed	Closed	Closed
Humptulips	67	Closed	Closed	Closed	Closed	Closed	Open
Upper Quinault	56	Closed	Closed	Closed	Closed	Closed	Open
Queets/Clearwater	160	Closed	Closed	Closed	Closed	Closed	Open
Hoh	371	Closed	Concern for shifts in effort	Open	Open	Closed	Closed
Quillayute	1308	Closed	Concern for shifts in effort Not accounting for tributary specific goals (diversity/distribution)	Open	Open	Open	Open

↗ Concern for shifts in effort

⌘ Not accounting for tributary specific goals (diversity/distribution)

* Final regulations require comanager agreement

** Does not account for illegal catch

*** Does not account for overforecasting

Open to Fishing
Closed to Fishing



Analysis of Options-Full Closure

System	Sport Impact Limit	Full Closure	Status Quo	Last Year's Regulation	Fish from boat reduced days	Fish from boat in select waters	Last Year's reduced hours
Willapa	319	Closed	Closed	Open	Open	Closed	Closed
Chehalis	141	Closed	Closed	Closed	Closed	Closed	Closed
Humptulips	67	Closed	Closed	Closed	Closed	Closed	Open
Upper Quinault	56	Closed	Closed	Closed	Closed	Closed	Open
Queets/Clearwater	160	Closed	Closed	Closed	Closed	Closed	Open
Hoh	371	Closed	Concern for shifts in effort	Open	Open	Closed	Closed
Quillayute	1308	Closed	Concern for shifts in effort Not accounting for tributary specific goals (diversity/distribution)	Open	Open	Open	Open

↗ Concern for shifts in effort

⌘ Not accounting for tributary specific goals (diversity/distribution)

* Final regulations require comanager agreement

** Does not account for illegal catch

*** Does not account for overforecasting

Open to Fishing
Closed to Fishing



Analysis of Options-Last Year's Rule

System	Sport Impact Limit	Full Closure	Status Quo	Last Year's Regulation	Fish from boat reduced days	Fish from boat in select waters	Last Year's reduced hours
Willapa	319	Closed	Closed	Open	Open	Closed	Open
Chehalis	141	Closed	Closed	Closed	Closed	Closed	Closed
Humptulips	67	Closed	Closed	Closed	Closed	Closed	Open
Upper Quinault	56	Closed	Closed	Closed	Closed	Closed	Open
Queets/Clearwater	160	Closed	Closed	Closed	Closed	Closed	Open
Hoh	371	Closed	Concern	Open	Open	Closed	Open
Quillayute	1308	Closed	Concern & Goals	Open	Open	Open	Open

↗ Concern for shifts in effort

⌘ Not accounting for tributary specific goals (diversity/distribution)

* Final regulations require comanager agreement

** Does not account for illegal catch

*** Does not account for overforecasting

Open to Fishing
Closed to Fishing



Analysis of Options-Fish from boat reduced days

System	Sport Impact Limit	Full Closure	Status Quo	Last Year's Regulation	Fish from boat reduced days	Fish from boat in select waters	Last Year's reduced hours
Willapa	319	Closed	Closed	Open	Closed	Closed	Open
Chehalis	141	Closed	Closed	Closed	Closed	Closed	Closed
Humptulips	67	Closed	Closed	Closed	Closed	Closed	Open
Upper Quinault	56	Closed	Closed	Closed	Closed	Closed	Open
Queets/Clearwater	160	Closed	Closed	Closed	Closed	Closed	Open
Hoh	371	Closed	Concern for shifts in effort	Open	Closed	Closed	Open
Quillayute	1308	Closed	Concern for shifts in effort Not accounting for tributary specific goals (diversity/distribution)	Open	Open	Open	Open

↗ Concern for shifts in effort

⌘ Not accounting for tributary specific goals (diversity/distribution)

* Final regulations require comanager agreement

** Does not account for illegal catch

*** Does not account for overforecasting

Open to Fishing
Closed to Fishing



Analysis of Options-Hybrid

System	Sport Impact Limit	Full Closure	Status Quo	Last Year's Regulation	Fish from boat reduced days	Fish from boat in select waters	Last Year's reduced hours
Willapa	319	Closed	Closed	Open	Open	Closed	Closed
Chehalis	141	Closed	Closed	Closed	Closed	Closed	Closed
Humptulips	67	Closed	Closed	Closed	Closed	Closed	Open
Upper Quinault	56	Closed	Closed	Closed	Closed	Closed	Open
Queets/Clearwater	160	Closed	Closed	Closed	Closed	Closed	Open
Hoh	371	Closed	Concern for shifts in effort	Open	Open	Closed	Closed
Quillayute	1308	Closed	Concern for shifts in effort Not accounting for tributary specific goals (diversity/distribution)	Open	Open	Open	Open

↗ Concern for shifts in effort

⌘ Not accounting for tributary specific goals (diversity/distribution)

* Final regulations require comanager agreement

** Does not account for illegal catch

*** Does not account for overforecasting

Open to Fishing
Closed to Fishing



Questions? Feedback?

We're especially interested in

- Feedback on proposal presented
- New proposals for steelhead fisheries

ZOOM Reminders:

- You can type a question through the Q&A function or ask a question by "raising your hand." If you're calling in you can raise a hand by dialing *9 on your phone, or if your calling from a computer you can find the hand icon at the bottom of your screen.
- To speak you will need to unmute yourself by using the mute button on your computer or mobile device, or enter *6 if you're calling from a land line.
- If you have a technical issue during the webinar, please drop us a note in the Q&A and we will help you through it.
- Questions in written format are accepted an online portal a: wdfw.wa.gov/coastal-steelhead

