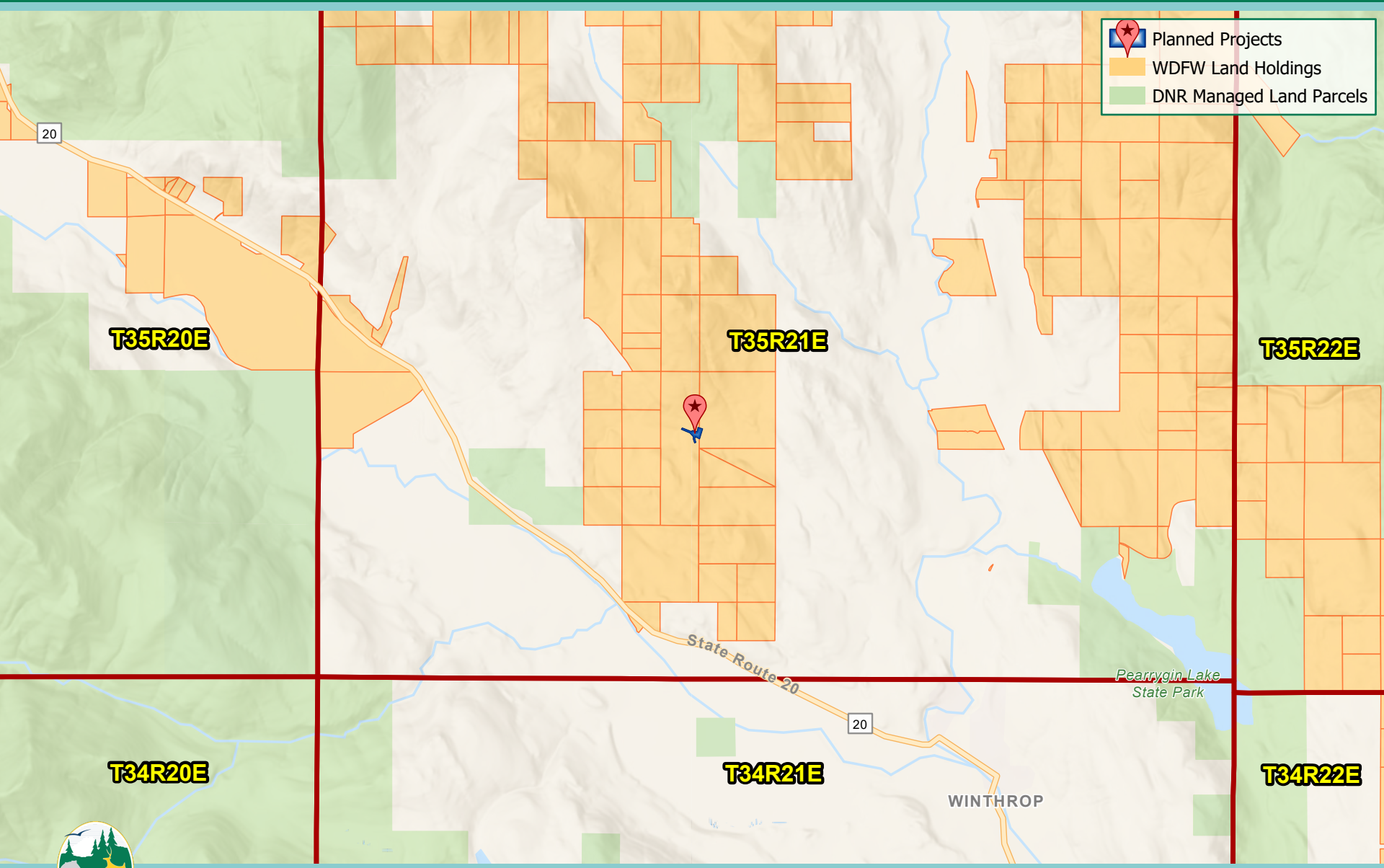


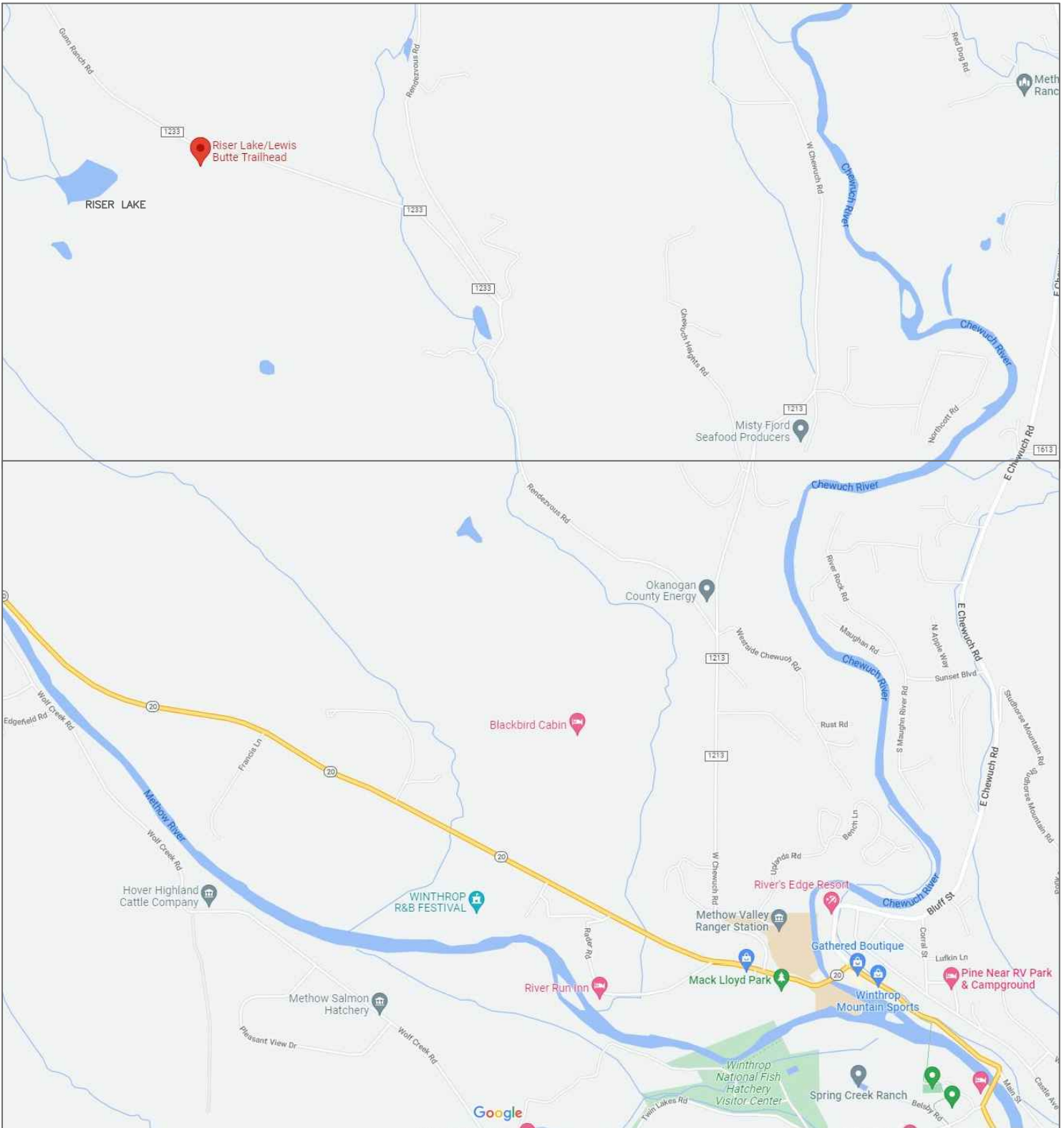
20-1538 Lewis Butte Trailhead Improvements

Site Location



- Planned Projects
- WDFW Land Holdings
- DNR Managed Land Parcels

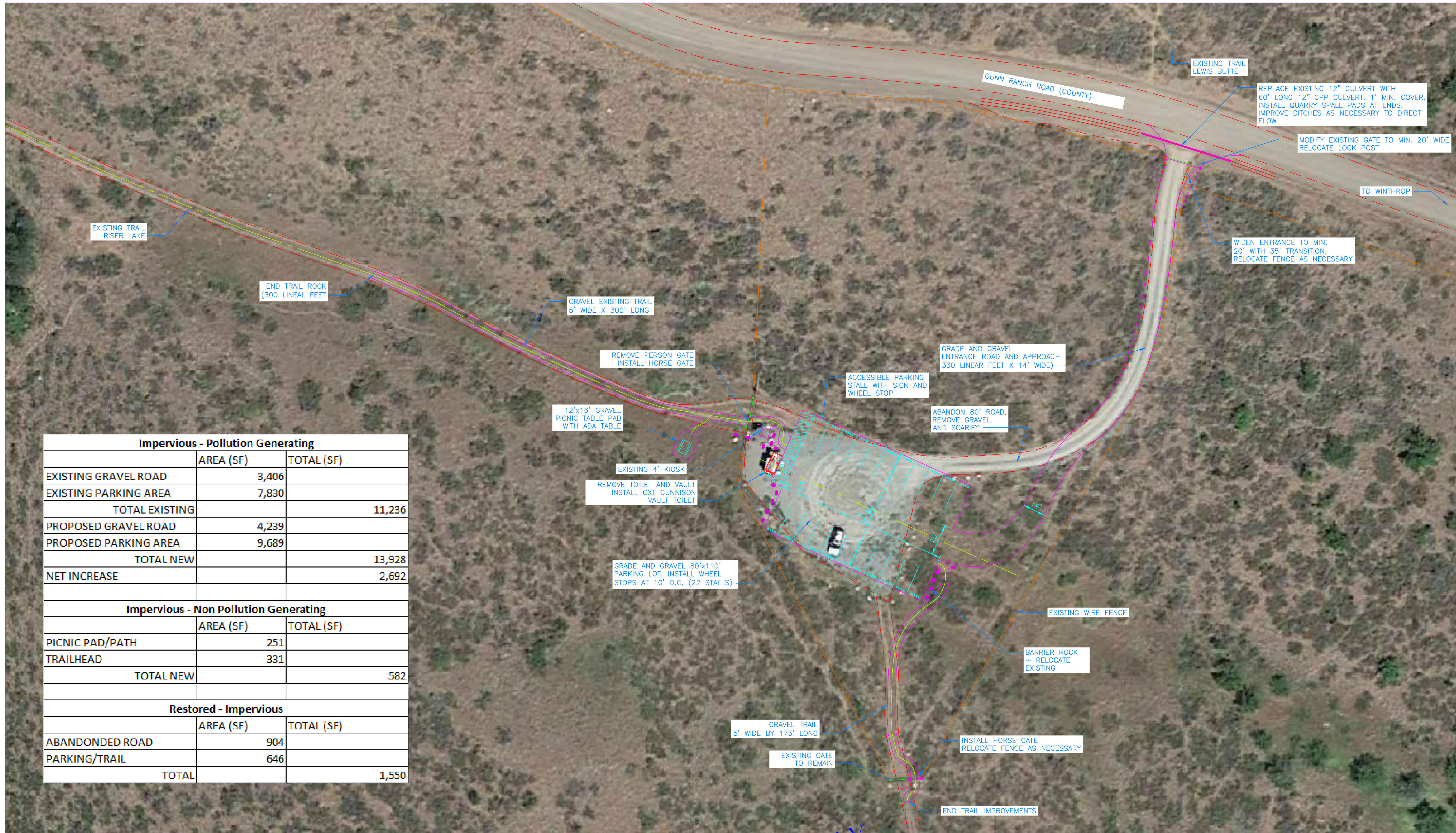




RISER LAKE / LEWIS BUTTE TRAILHEAD

VICINITY MAP

NOT TO SCALE



Impervious - Pollution Generating		
	AREA (SF)	TOTAL (SF)
EXISTING GRAVEL ROAD	3,406	
EXISTING PARKING AREA	7,830	
TOTAL EXISTING		11,236
PROPOSED GRAVEL ROAD	4,239	
PROPOSED PARKING AREA	9,689	
TOTAL NEW		13,928
NET INCREASE		2,692
Impervious - Non Pollution Generating		
	AREA (SF)	TOTAL (SF)
PICNIC PAD/PATH	251	
TRAILHEAD	331	
TOTAL NEW		582
Restored - Impervious		
	AREA (SF)	TOTAL (SF)
ABANDONDED ROAD	904	
PARKING/TRAIL	646	
TOTAL		1,550

SITE PLAN
SCALE: 1" = 30'

NOTE:
ENGINEER SHALL STAKE
FEATURES IN FIELD.

WASHINGTON DEPARTMENT OF
FISH & WILDLIFE

**NOT APPROVED FOR
CONSTRUCTION. REVIEW ONLY**

DATE	REVISION DESCRIPTION	BY
	APPROVED AND RELEASED FOR CONSTRUCTION	
DESIGNED BY	J. HANSEN	
CHECKED BY		
DRAWN BY		
DATE	11/03/2021	

METHOW WLA, RENDEZVOUS UNIT
LEWIS BUTTE / RISER LAKE TRAILHEAD
SITE MAINTENANCE
SITE PLAN

PROJECT NO. ON:R077:2022-1	
SHEET 1	OF 1