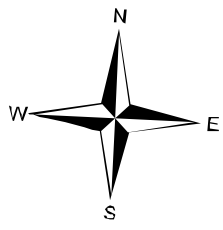
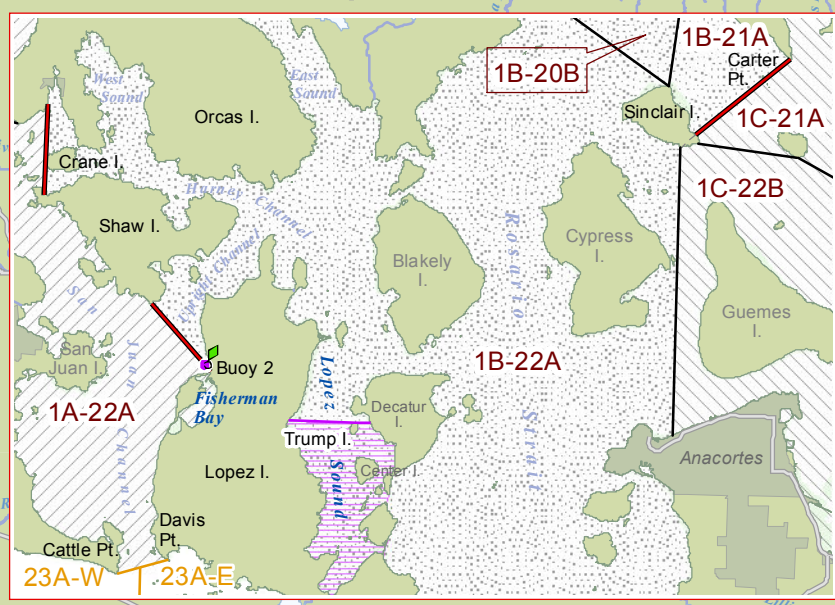
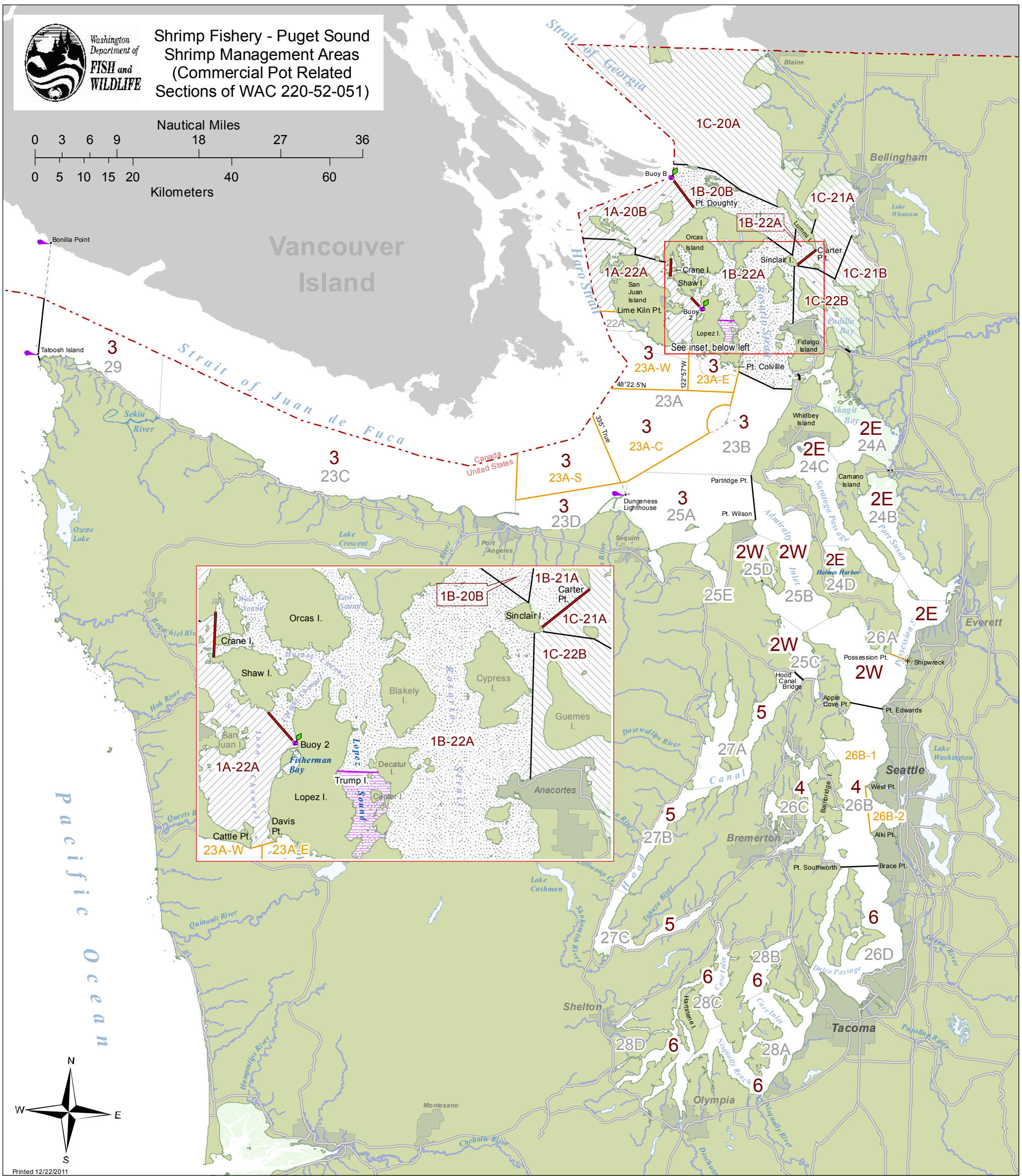
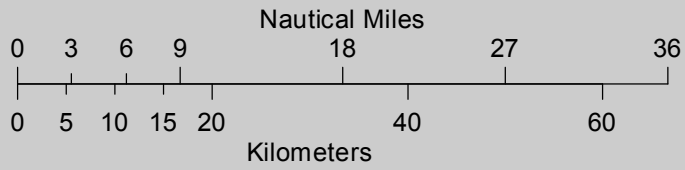




Washington
Department of
**FISH and
WILDLIFE**

Shrimp Fishery - Puget Sound Shrimp Management Areas (Commercial Pot Related Sections of WAC 220-52-051)



Printed 12/22/2011

Line Symbols

- Disregarded MCRA boundary
- Concomitant MCRA boundary
- Section 2 boundary
- Section 7 boundary
- Section 5 boundary
- Boundary adjunct

Shading Symbols

- Section 2 closures
- Paragraph 7a Area 1A
- Paragraph 7b Area 1B
- Paragraph 7c Area 1C

Text Symbols

- MCRA
- Paragraph 5 Area
- Paragraph 7 Area
- Paragraph 8 Area

Shrimp fishery - Puget Sound. (excerpted paragraphs that map specific commercial pot shrimp fishery rules)

- (2) It is unlawful to fish for shrimp for commercial purposes in Puget Sound using shellfish pot gear except during seasons opened by emergency rule:
- (c) Area restrictions:
- (i) Pot gear closed in all Puget Sound Shrimp Districts except the Port Townsend Shrimp District.
 - (ii) Pot gear closed in Lopez Sound south of a line projected true east-west from the northern tip of Trump Island from the season opening through July 9th.
- (5) For purposes of shrimp pot harvest allocation, fishing season, and catch reporting, the Marine Fish-Shellfish Management and Catch Reporting Areas (catch areas) are modified as follows:
- (a) That portion of Catch Area 22A south of a line due east from the international boundary to Lime Kiln Point light on San Juan Island, then south of the shores of San Juan Island, then south of a line from Cattle Point on San Juan Island to Davis Point on Lopez Island, then south of the shores of Lopez Island to Point Colville shall be considered to be part of Catch Area 23A.
 - (b) Catch Area 23A is divided into four subareas:
 - (i) 23A-E (east) is those waters of Catch Area 23A east of 122°57'W. Long. and north of 48°22.5'N. Lat.
 - (ii) 23A-W (west) is those waters of Catch Area 23A west of 122°57'W. Long. and north of 48°22.5'N. Lat.
 - (iii) 23A-C (central) is those waters of Catch Area 23A south of 48°22.5'N. Lat. and east of a line projected 335° true from the Dungeness lighthouse.
 - (iv) 23A-S (south) is those waters of Catch Area 23A west of a line projected 335° true from the Dungeness lighthouse.
 - (c) Catch Area 26A is divided into two subareas:
 - (i) 26A-E (east) is those waters of Catch Area 26A north and east of a line projected 110 degrees true from the southern tip of Possession Point on Whidbey Island to the shipwreck on the opposite shore.
 - (ii) 26A-W (west) is those waters of Catch Area 26A south and west of a line projected 110 degrees true from the southern tip of Possession Point on Whidbey Island to the shipwreck on the opposite shore.
 - (d) Catch Area 26B is divided into two subareas:
 - (i) 26B-1 is those waters of Catch Area 26B westerly of a line projected from West Point to Alki Point.
 - (ii) 26B-2 is those waters easterly of a line projected from West Point to Alki Point.
- (7) The following areas are defined as Puget Sound Shrimp Management Areas:
- (a) Shrimp Management Area 1A: Waters of Catch Area 20B west of a line from Point Doughty on Orcas Island to the bell buoy at the international boundary, and all waters of Catch Area 22A west of a line projected true north and south from the western tip of Crane Island, west of a line projected from the number 2' buoy at the entrance to Fisherman Bay to the southern tip of Shaw Island.
 - (b) Shrimp Management Area 1B: Waters of Catch Area 20B east of a line from Point Doughty on Orcas Island to the bell buoy at the international boundary, and waters of Catch Area 22A east of a line projected true north and south from the western tip of Crane Island, east of a line projected from the number 2' buoy at the entrance to Fisherman Bay to the southern tip of Shaw Island, and east of a line projected true south from Point Colville, and all waters of Catch Area 21A north and west of a line from the southern tip of Sinclair Island to Carter Point on Lummi Island.
 - (c) Shrimp Management Area 1C: Waters of Catch Areas 20A, 21B, 22B, and waters of Catch Area 21A not included in Management Area 1B.
 - (d) Shrimp Management Area 2E: Waters of Catch Areas 24A, 24B, 24C, 24D, and 26A-E (east).
 - (e) Shrimp Management Area 2W: Waters of Catch Areas 25B, 25C, 25D, and 26A-W (west).
 - (f) Shrimp Management Area 3: Waters of Catch Areas 23A, 23B, 23C, 23D, 25A, 25E, and 29.
 - (g) Shrimp Management Area 4: Waters of Catch Areas 26B and 26C.
 - (h) Shrimp Management Area 5: Waters of Catch Areas 27A, 27B, and 27C.
 - (i) Shrimp Management Area 6: Waters of Catch Areas 26D, 28A, 28B, 28C, and 28D.
- (8) In Shrimp Management Areas 1A, 1B and 1C, all catch must be reported by Management Area and Catch Area combined, either 1A-20B, 1A-22A, 1B-20B, 1B-21A, 1B-22A, 1C-20A, 1C-21A, 1C-21B, or 1C-22B.