

2022 Potholes Reservoir Walleye Fishing Prospects

During October 2021, WDFW conducted the Fall Walleye Index Netting Survey of Potholes Reservoir, Grant County, WA. Results showed a decrease in the average number of Walleye caught per net from 2016 (25.3 Walleye/net) to (21.4 Walleye/net) in 2021 (Figure 1). The average size of Walleye collected in 2021 was 14.8 inches with the largest slightly above 30 inches. Forty-four percent of the Walleye collected were 12–20 inches and 16 percent were 20 inches or larger (Figure 2). Anglers harvested an estimated 15,050 Walleye in Potholes Reservoir during 2021, and we expect a similar harvest during 2022. The majority of Walleye were caught by anglers during May and June, with many anglers fishing the mouth of Crab Creek and along the face of the dunes. The most successful techniques for catching Walleye include trolling worm harnesses (slow death hook), trolling crankbaits, or vertical jigging with blade baits.

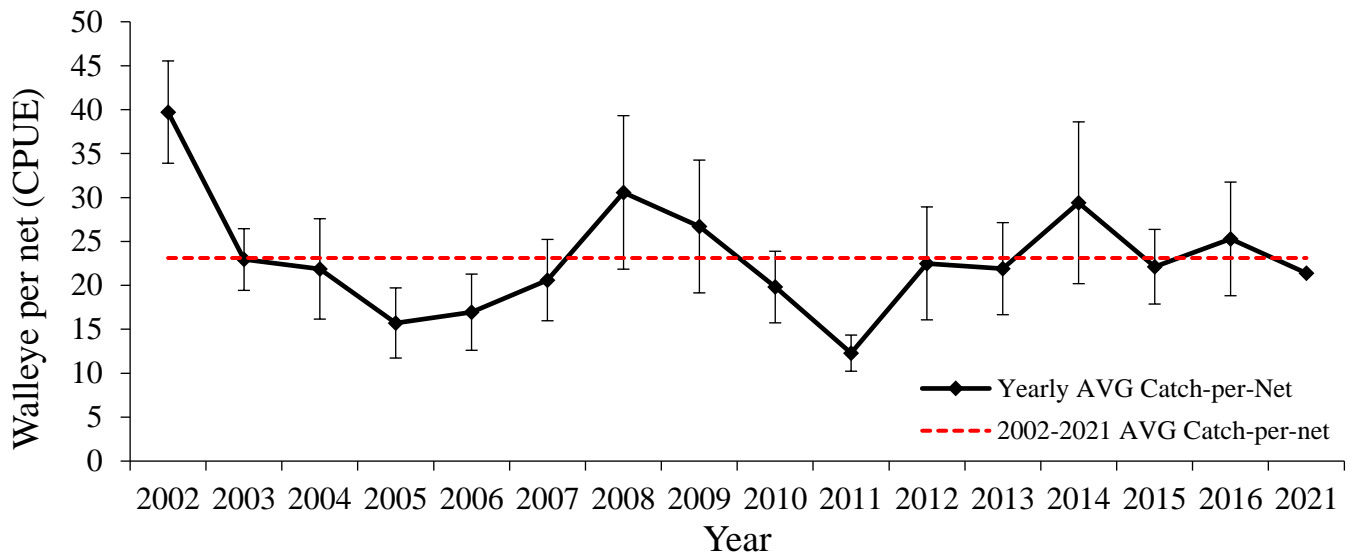


Figure 1. Average catch per net of Walleye caught in Potholes Reservoir during 2021 compared to the 2002–2021 long-term average.

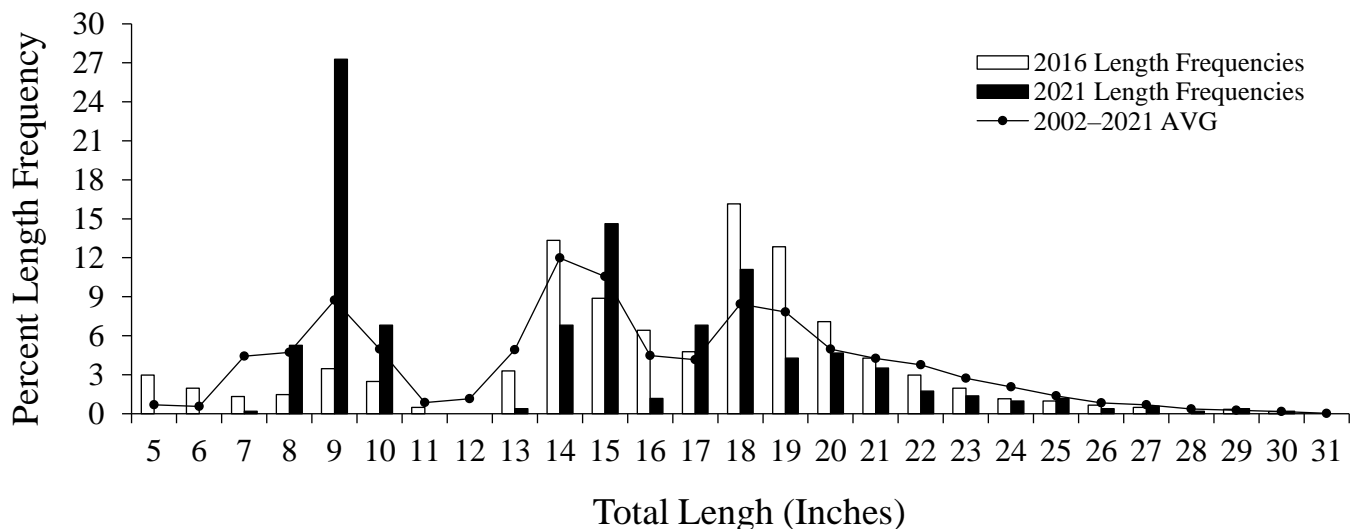


Figure 2. Percent length frequency of Walleye caught in Potholes Reservoir during 2016 and 2021 compared to the 2002–2021 long-term average.