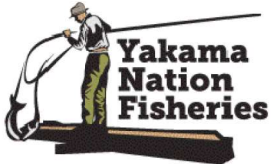


LITTLE BRIDGE CREEK FISH HABITAT RESTORATION PROJECT

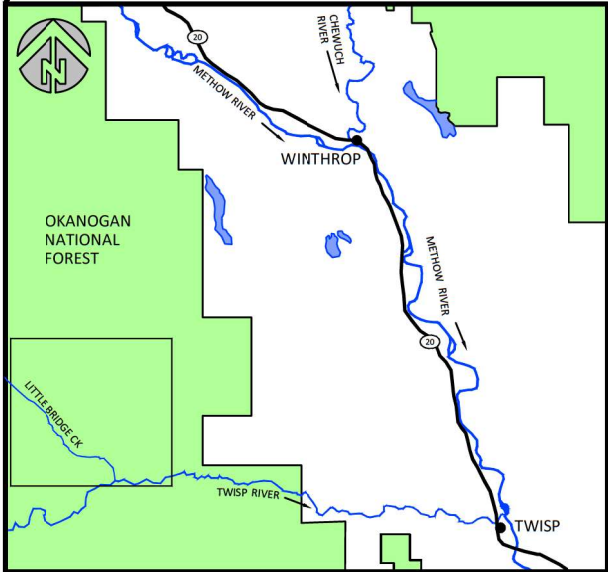
Draft 60% Design



YAKAMA NATION FISHERIES
2 JOHNSON LANE
WINTHROP WA, 98862

SHEET INDEX

- 1 - COVER, SHEET INDEX, SITE MAPS
- 2 - GENERAL NOTES
- 3 - HIP CONSERVATION MEASURES
- 4 - OVERVIEW MAP
- 5 - AERIAL VIEW 1 - LOG PLACEMENTS
- 6 - AERIAL VIEW 2 - LOG PLACEMENTS
- 7 - AERIAL VIEW 3 - LOG PLACEMENTS
- 8 - AERIAL VIEW 4 - LOG PLACEMENTS
- 9 - AERIAL VIEW 5 - LOG PLACEMENTS
- 10 - AERIAL VIEW 6 - LOG PLACEMENTS
- 11 - AERIAL VIEW 7 - LOG PLACEMENTS
- 12 - AERIAL VIEW 8 - LOG PLACEMENTS
- 13 - AERIAL VIEW 9 - LOG PLACEMENTS
- 14 - LOG PLACEMENT DETAILS



VICINITY MAP

COORDINATES:
LATITUDE: 48°23'16.80"N
LONGITUDE: 120°18'12.83"W

SECTION 2, TOWNSHIP 33N, RANGE 20E

TRIBUTARY OF: TWISP RIVER

NO.	BY	DATE	REVISION DESCRIPTION

MM	MB	MB
DRAWN	DESIGNED	CHECKED
MM	12/30/20	19-02-40
APPROVED	DATE	PROJECT

YAKAMA NATION FISHERIES
LITTLE BRIDGE CREEK RESTORATION
90% DESIGN



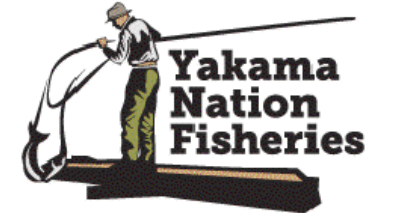
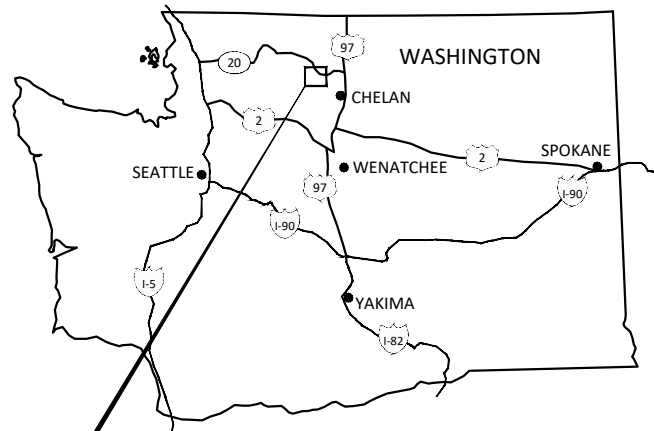
501 Portway Avenue, Suite 101
Hood River, OR 97031
541.386.9003
www.interfluve.com

COVER, SHEET INDEX, SITE
MAPS

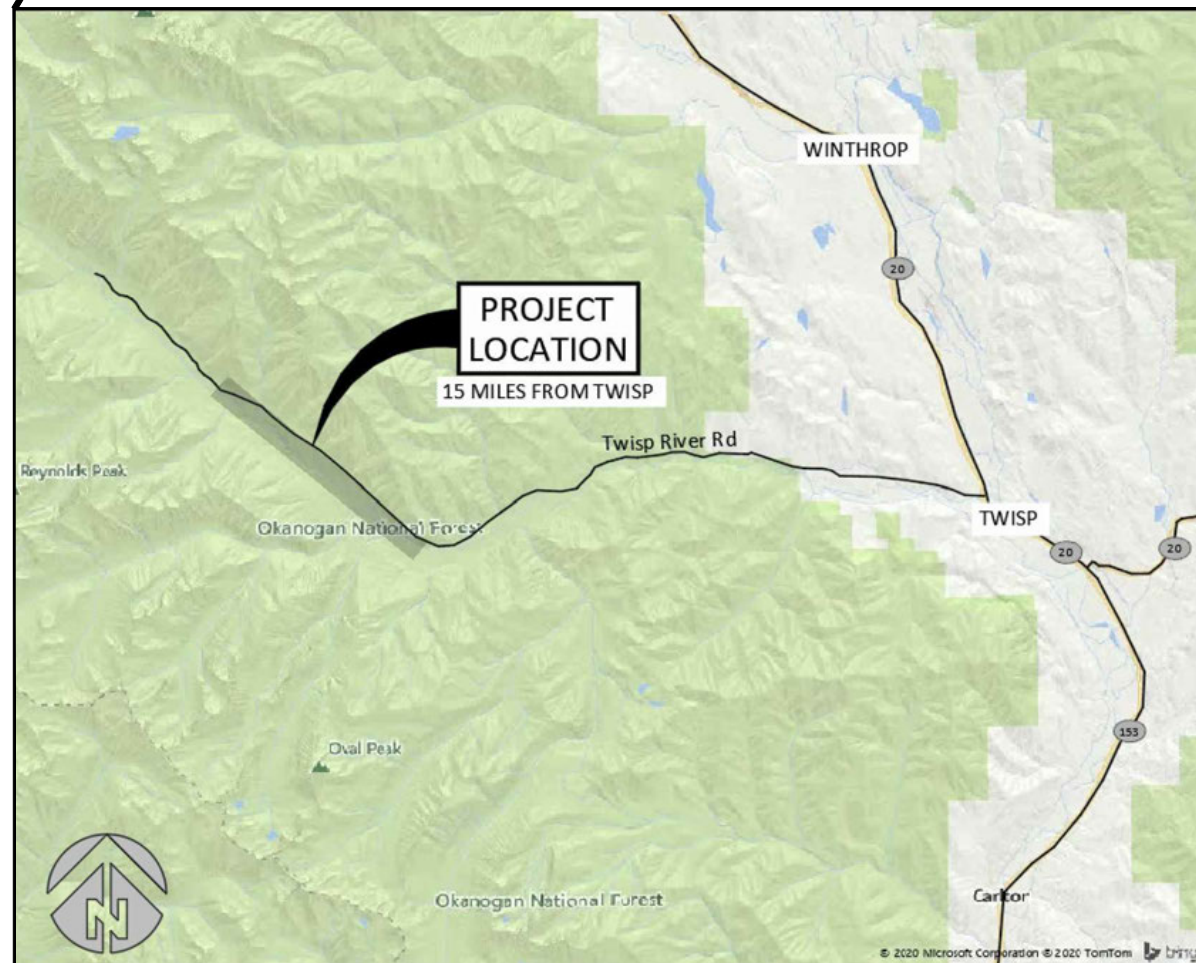
UPPER TWISP - FISH HABITAT ENHANCEMENT PROJECT

MYSTERY REACH & WAR CREEK REACH

60% Permit Level Designs



YAKAMA NATION FISHERIES
2 JOHNSON LANE
WINTHROP WA, 98862



VICINITY MAP
SCALE: 1" = 4 MILES

COORDINATES:
LATITUDE N 48.422°
LONGITUDE W 120.500°

SECTION 11, TOWNSHIP 33N, RANGE 20E

WATERBODY: TWISP RIVER
TRIBUTARY OF: METHOW RIVER

SHEET LIST

- 1 TITLE SHEET, MAPS
- 2 GENERAL NOTES
- 3 HIP CONSERVATION MEASURES
- 4 LAYOUTS - MYSTERY REACH
- 5 LAYOUTS - MYSTERY REACH
- 6 MYSTERY REACH - SITE 1
- 7 MYSTERY REACH - SITE 2
- 8 MYSTERY REACH - SITE 3
- 9 MYSTERY REACH - SITE 4
- 10 MYSTERY REACH - SITE 5
- 11 MYSTERY REACH - SITE 6
- 12 MYSTERY REACH - SITE 7
- 13 LAYOUTS - WAR REACH
- 14 WAR REACH - SITE 1
- 15 WAR REACH - SITE 2
- 16 WAR REACH - SITE 3
- 17 WAR REACH - SITE 4
- 18 WAR REACH - SITE 5
- 19 DETAILS - LOG STRUCTURES (HELICOPTER)
- 20 DETAILS - LOG STRUCTURES (BURIED)
- 21 DETAILS - LOG STRUCTURES (PILE BALLASTED)
- 22 DETAILS - TIMBER PILE & THREADED ROD
- 23 SPECIFICATIONS (1 OF 2)
- 24 SPECIFICATIONS (2 OF 2)



G:\Users\mike_m\Desktop\work\Upper-Twisp\YNA\Upper-Twisp-Plans\Upper-Twisp\YNA.dwg - mike_m - 1/16/21

NO.	BY	DATE	REVISION DESCRIPTION

MM	MM	MB
DRAWN	DESIGNED	CHECKED
MM	DEC 30, 2020	---
APPROVED	DATE	PROJECT

YAKAMA NATION FISHERIES
UPPER TWISP RIVER RESTORATION
60% DESIGN

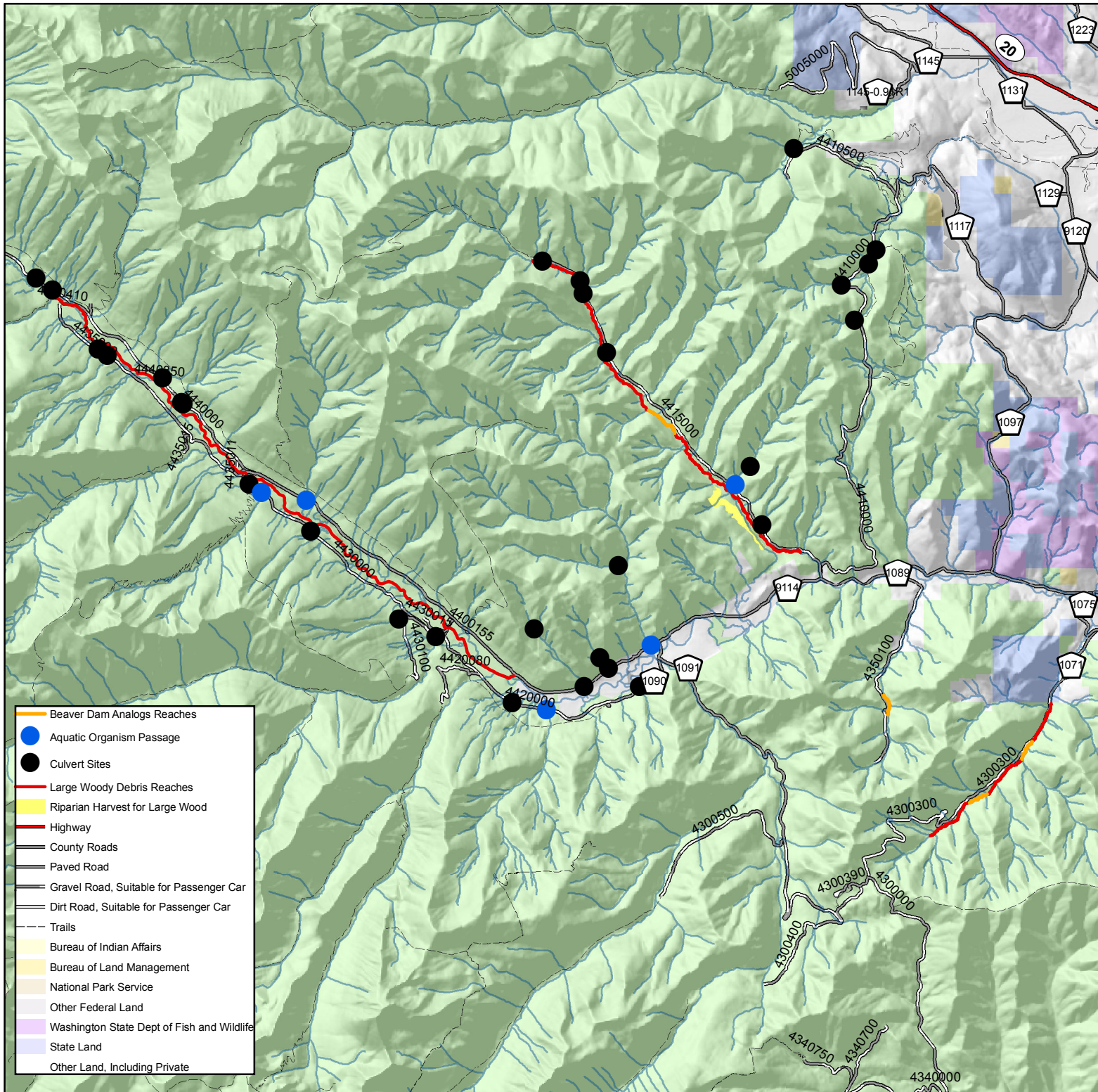


501 Portway Avenue, Suite 101
Hood River, OR 97031
541.386.9003
www.interfluve.com

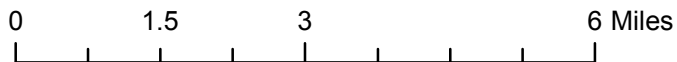
TITLE SHEET, MAPS

SHEET

1 OF 24



The USDA Forest Service makes no warranty, expressed or implied, including the warranties of merchantability and fitness for a particular purpose, nor assumes any legal liability or responsibility for the accuracy, reliability, completeness or utility of these geospatial data, or for the improper or incorrect use of these geospatial data. These geospatial data and related maps or graphics are not legal documents and are not intended to be used as such. The data and maps may not be used to determine title, ownership, legal descriptions or boundaries, legal jurisdiction, or restrictions that may be in place on either public or private land. Natural hazards may or may not be depicted on the data and maps, and land users should exercise due caution. The data are dynamic and may change over time. The user is responsible to verify the limitations of



Twisp Aquatic Restoration Project

Okanogan-Wenatchee National Forest
Methow Valley Ranger District
Winthrop, Washington

Map Produced 3/3/2022

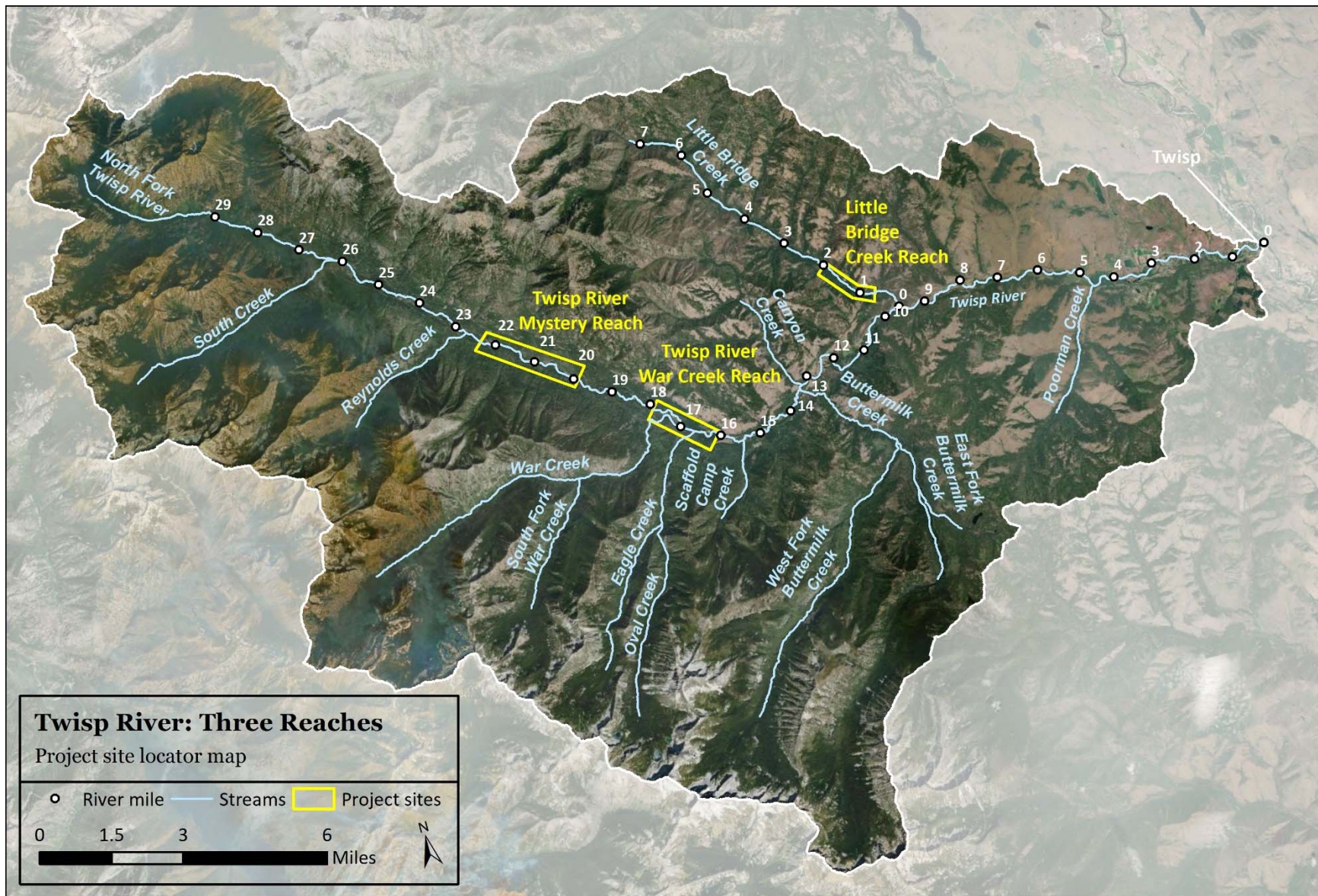


Figure 1. Project reach location map.