

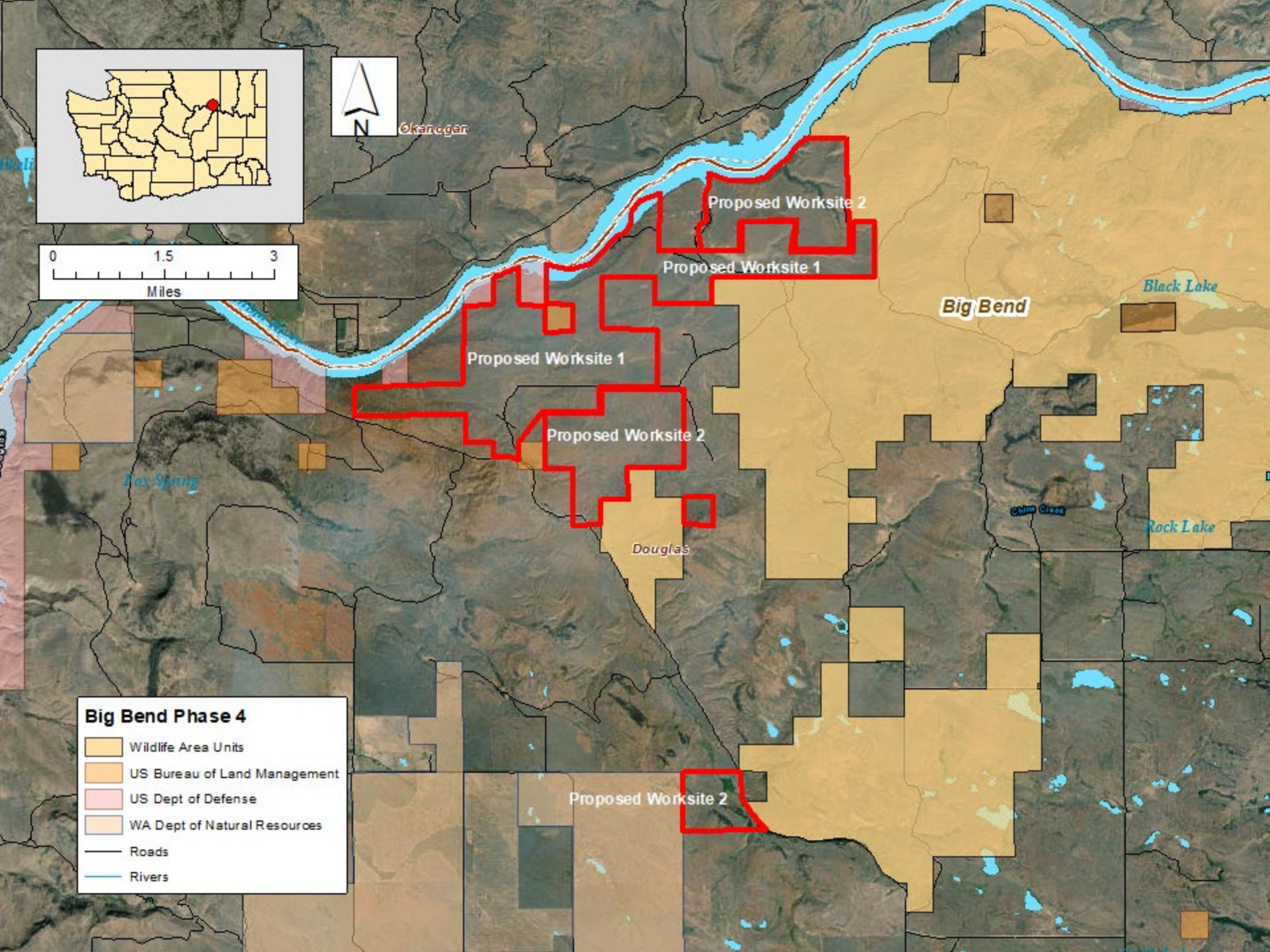
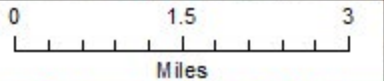
# Big Bend Phase 4 Douglas County

The WDFW Big Bend Project (Phase 4) is the acquisition of up to 3,425 acres in two separate worksites at the edge of the Big Bend Wildlife Area and adjacent to the Columbia River in Douglas County. Objectives include the protection of Sharp-tailed grouse, Washington ground squirrel, and golden eagle, as well as the protection and rehabilitation of shrubsteppe and riparian habitats. Recreational opportunities include excellent mule deer and upland bird hunting as well as opportunities for turkey and waterfowl. The site will also provide 1.76 miles of shoreline on the Columbia River with excellent areas for fishing.





Okanogan



Big Bend

Black Lake

Fox Spring

Douglas

Chim Creek

Rock Lake

**Big Bend Phase 4**

- Wildlife Area Units
- US Bureau of Land Management
- US Dept of Defense
- WA Dept of Natural Resources
- Roads
- Rivers

Proposed Worksite 1

Proposed Worksite 2

Proposed Worksite 1

Proposed Worksite 2

Proposed Worksite 2