

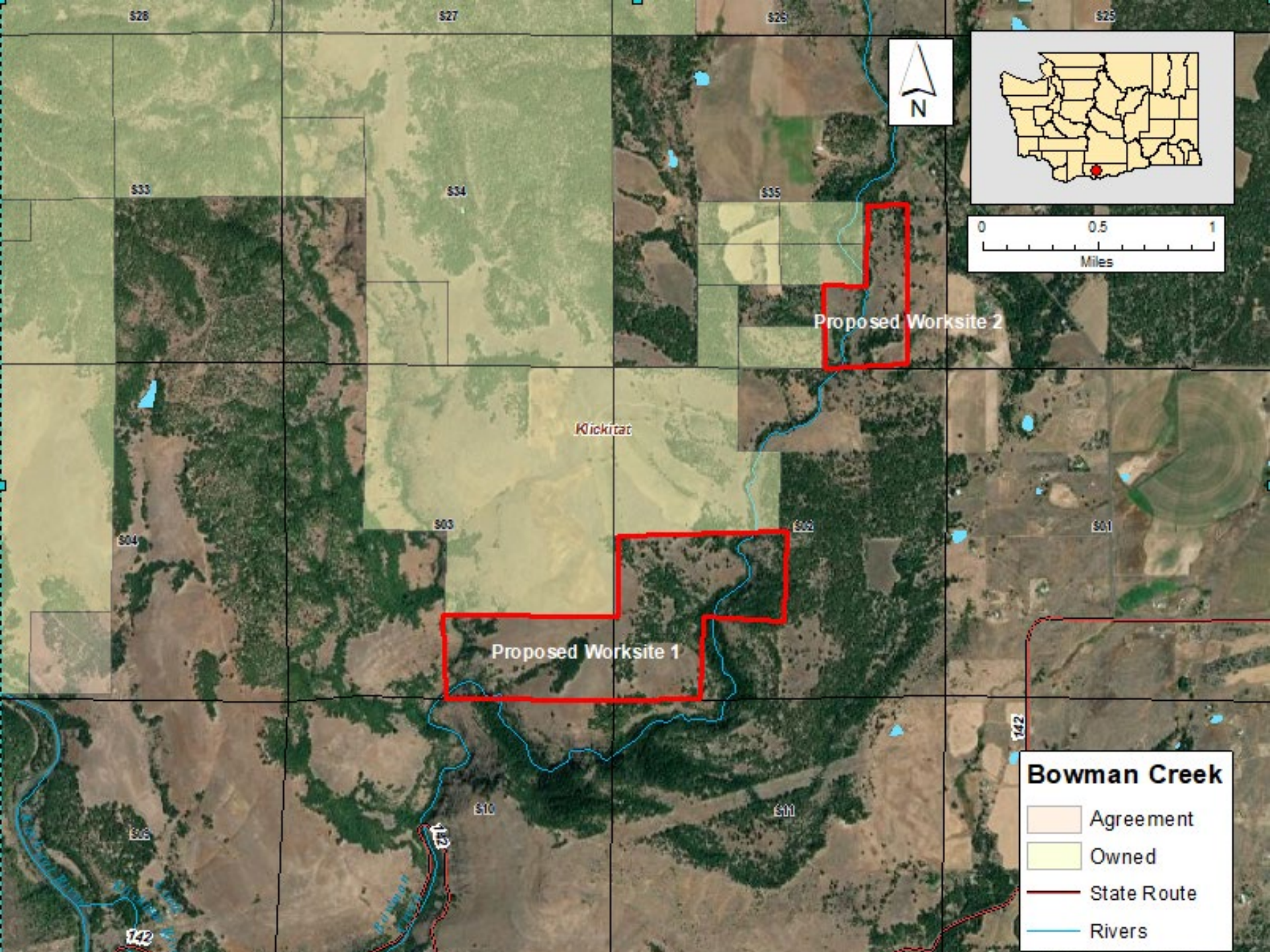
Bowman Creek Klickitat County

WDFW's Bowman Creek project is for the acquisition of up to 260 acres in two separate worksites adjacent to the Soda Springs Unit of the Klickitat Wildlife Area in Klickitat County.

This project conserves a perennial stream and intact riparian zone. The stream here supports both fish and mussels and is a tributary to the Klickitat River. This area also supports western gray squirrel and peregrine falcon, among others.

Recreation here includes hunting, fishing, and wildlife viewing.





Proposed Worksite 2

Kickitat

Proposed Worksite 1

Bowman Creek

- Agreement
- Owned
- State Route
- Rivers