

Hoffstadt Hills

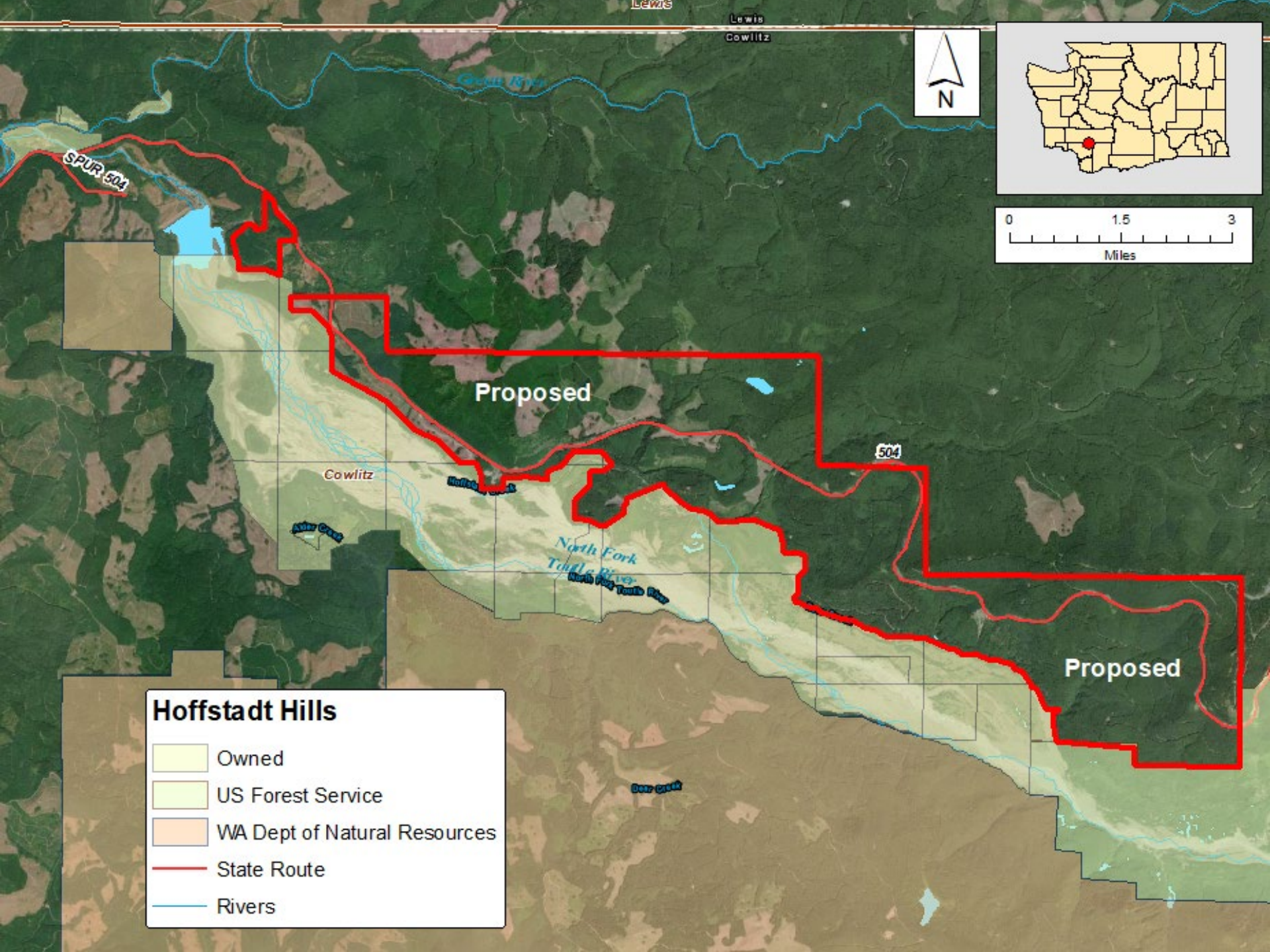
Cowlitz County

The WDFW Hoffstadt Hills project is to acquire up to 7,300 acres adjacent to the Hoffstadt Unit of the Mt. St. Helens Wildlife Area and Mt. St. Helens National Monument in Cowlitz County. The primary focus of this acquisition is to protect and enhance elk winter range habitat as well as steelhead and coho spawning and rearing areas. This is essential for landscape-level conservation of the elk herd in the face of continual habitat inundation due to efforts necessary to hold back sediment from the Mt. St. Helen's eruption.

The property contains 17 miles of stream and riparian habitat that sustains important tributary and habitat functions. Along with streams and riparian, the property also features cliffs, talus slopes, and forest.

Recreation would include hunting, wildlife viewing, fishing, hiking, and horseback riding.





Hoffstadt Hills

- Owned
- US Forest Service
- WA Dept of Natural Resources
- State Route
- Rivers

