

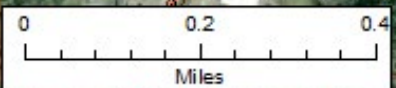
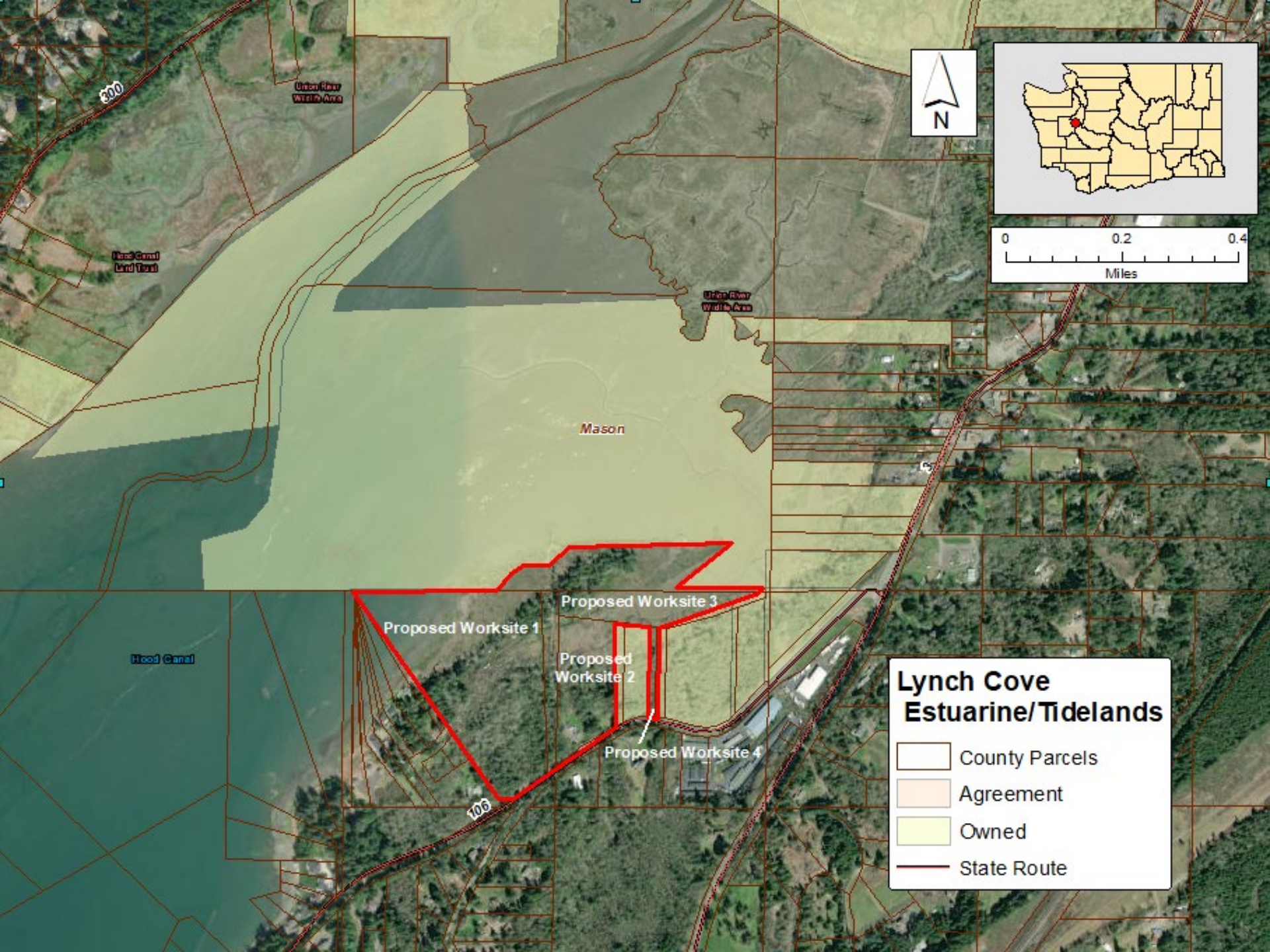
# Lynch Cove Estuarine/Tidelands Mason County

The WDFW Lynch Cove project is for up to 64 Acres across four separate worksites in the Union River Unit of the South Puget Sound Wildlife Area in Mason County.


The parcels here include five different landowners and the property will conserve estuarine habitat that contains summer chum, Puget Sound steelhead, and a large waterfowl concentration.

Recreational opportunities include waterfowl hunting, bird watching, kayaking, and wildlife viewing.





**Lynch Cove  
Estuarine/Tidelands**

-  County Parcels
-  Agreement
-  Owned
-  State Route

Union River  
Wildlife Area

Hood Canal  
Land Trust

Union River  
Wildlife Area

Mason

Hood Canal

Proposed Worksite 1

Proposed Worksite 3

Proposed  
Worksite 2

Proposed Worksite 4

300

106