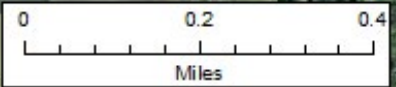
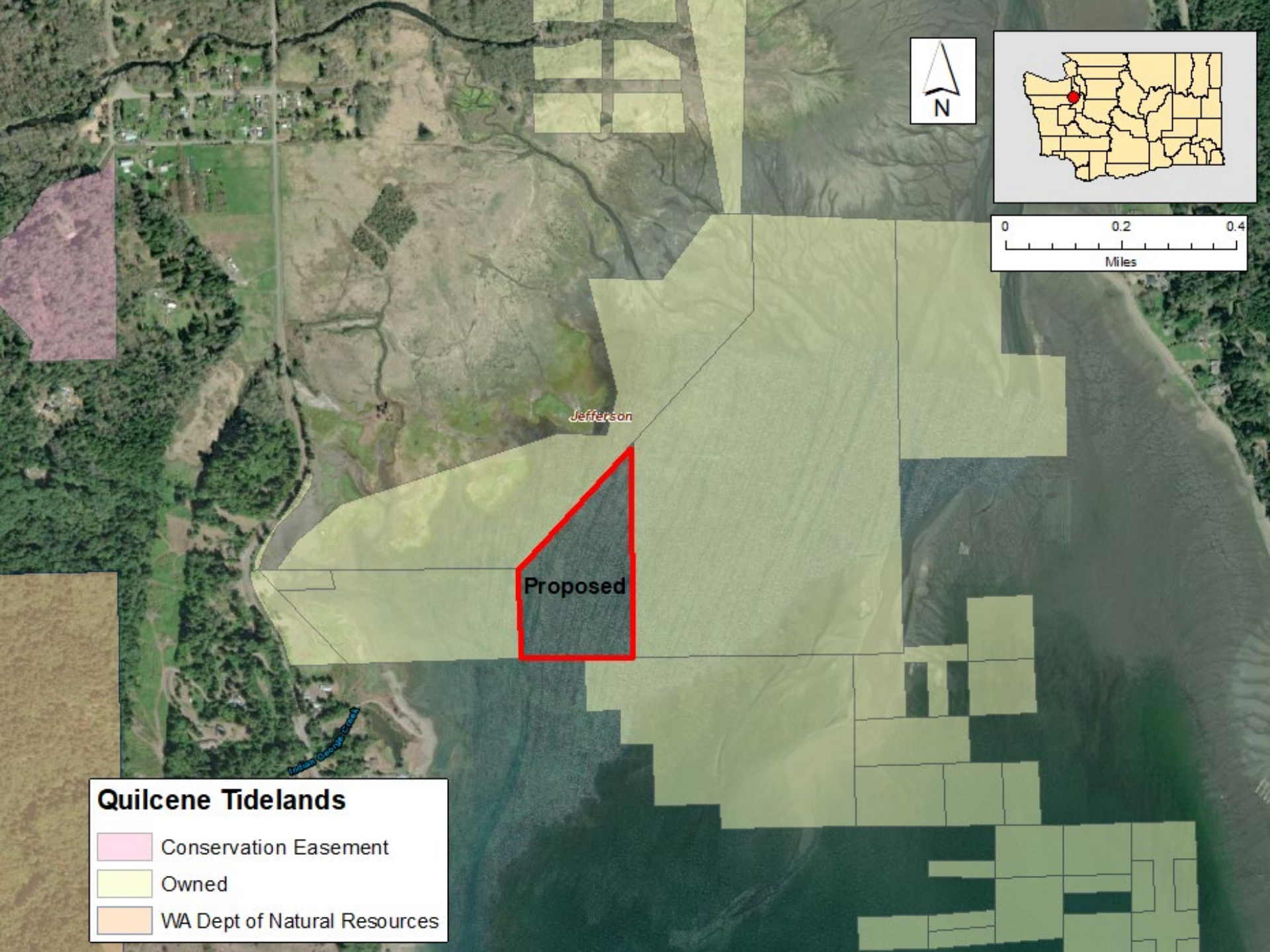




Quilcene Tidelands Jefferson County

The WDFW Quilcene tidelands project is for the acquisition of 15 acres of tideland property surrounded by existing WDFW parcels in Quilcene Bay, Jefferson County. The project conserves tideland connectivity with recreational opportunities for shellfish harvest, tideland exploration, waterfowl hunting, and wildlife viewing.





Quilcene Tidelands

-  Conservation Easement
-  Owned
-  WA Dept of Natural Resources

Proposed

Jefferson

Indian George Creek