

Ebey Island Land Use Informational Webinar

Facilitated by Triangle Consulting
Presentations by WDFW and Ducks Unlimited staff



Agenda

Welcome and Introductions (10 min)

- Meeting Purpose, Agenda, Ground Rules
- Washington Department of Fish and Wildlife Welcome

Ebey Island Site Overview and Planning Process Presentation (25 min)

- Snohomish Delta and Ebey Island Planning Presentation and Site overview

Q&A (30 min)

- Participants may ask questions via the chat or verbally to be answered for the group by WDFW

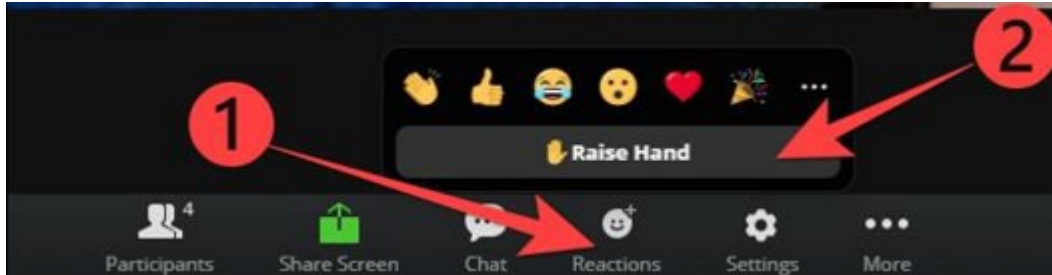
Next Steps (10 min)

***The meeting will be recorded**



Zoom Functions

“Raise Hand” feature



Call-in users:

- **dial *9** to raise and lower your hand

- **Dial *6** to mute or unmute yourself

Using the chat box



***This meeting will be recorded**



Expectations for this Webinar



Engage in a **respectful** and civil line of questioning.



Please keep a **constructive tone** and do not interrupt when others are speaking.



Share the airtime so that all participants can have the opportunity to speak.



Listen to learn about others' priorities and perspectives.

***This meeting will be recorded**



Staff Introductions



Washington
Department of
**FISH and
WILDLIFE**

Loren Brokaw
Assistant Wildlife Program Manager
Loren.Brokaw@dfw.wa.gov

Lindsey Desmul
Habitat Biologist
Lindsey.Desmul@dfw.wa.gov

Brian Boehm
Snoqualmie Wildlife Area Manager
Brian.Boehm@dfw.wa.gov



CK Eidem
Regional Biologist
ceidem@ducks.org



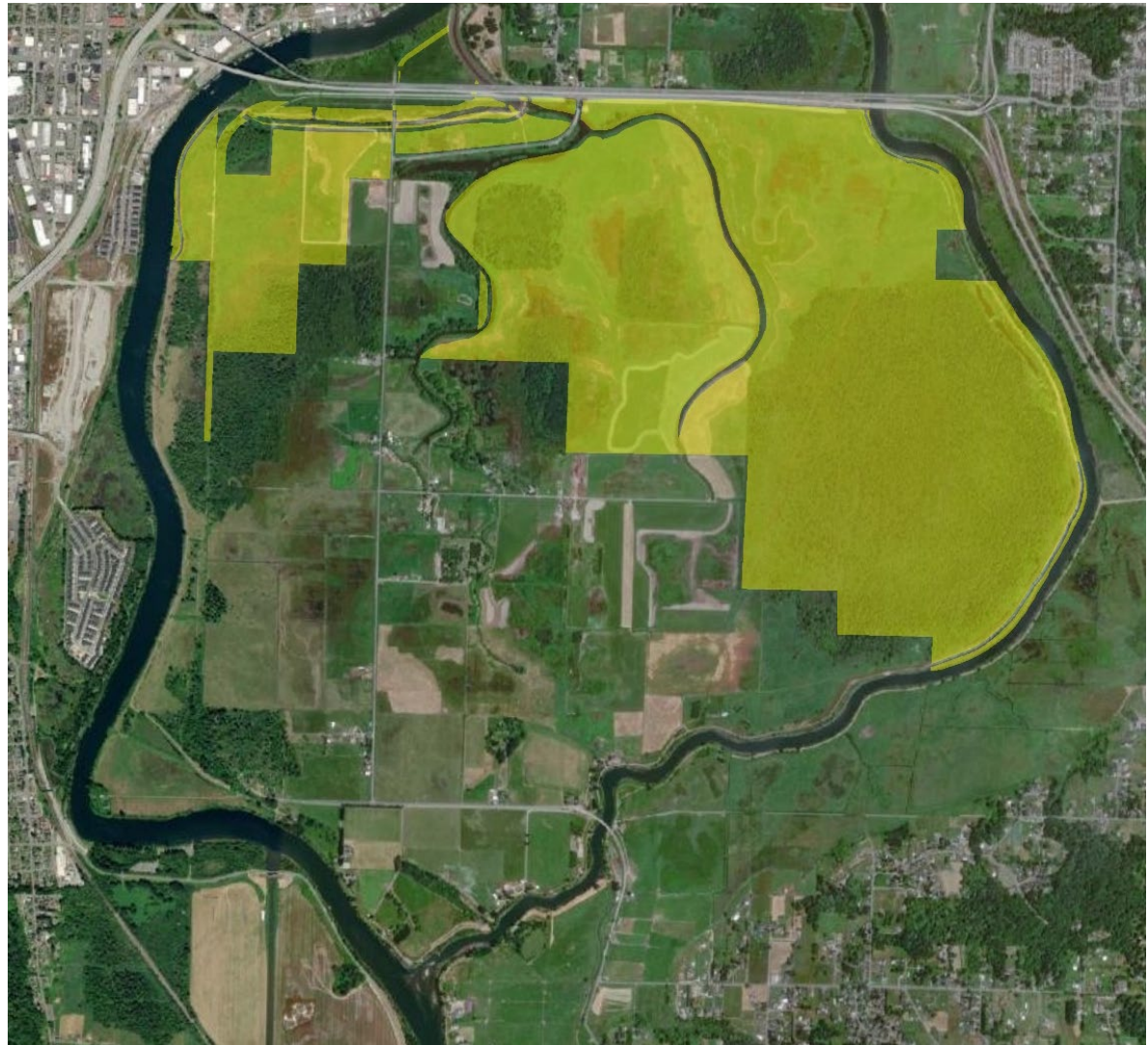
Ebey Island

1,285 acres of WDFW ownership

Recent acquisition

2011 Feasibility Study

Current popular land uses include pheasant and waterfowl hunting, birding, and farming.





Vision and Purpose for Management Plan

Ebey Island is an important place for hunting, non-consumptive recreation, farming, and habitat.

Focus on elements that can be improved over the next 10 years

Expand focus to water management and wetland habitat

The need to increase intertidal area on public land in the Snohomish River estuary is a **long-term** need, but one that needs to be recognized.



Sideboards

WAC 220-500-010

“The primary purpose of department lands is the preservation, protection, perpetuation and management of fish and wildlife & their habitats. Public use on Department lands may include fishing, hunting, fish & wildlife appreciation, and other outdoor recreational opportunities when compatible with healthy & diverse fish & wildlife populations.”



Sideboards Cont'd

We will consider our neighbors and not impact them negatively

We will be able to operate and maintain any new projects

We will **not** build anything permanent
-elements will have a lifespan of
10-20 years

Must consider funding and permitting constraints





Sideboards Cont'd

Large forested area on the southeast side of the property is a **rare fen**.

Cannot negatively impact this habitat but could factor this into some form of habitat restoration.



Potential

Proximity to Everett

Huge area of land

Degraded areas can be improved

Public access can be improved

Agriculture can be improved





Shaping the Plan

We will use:

Technical info from DU

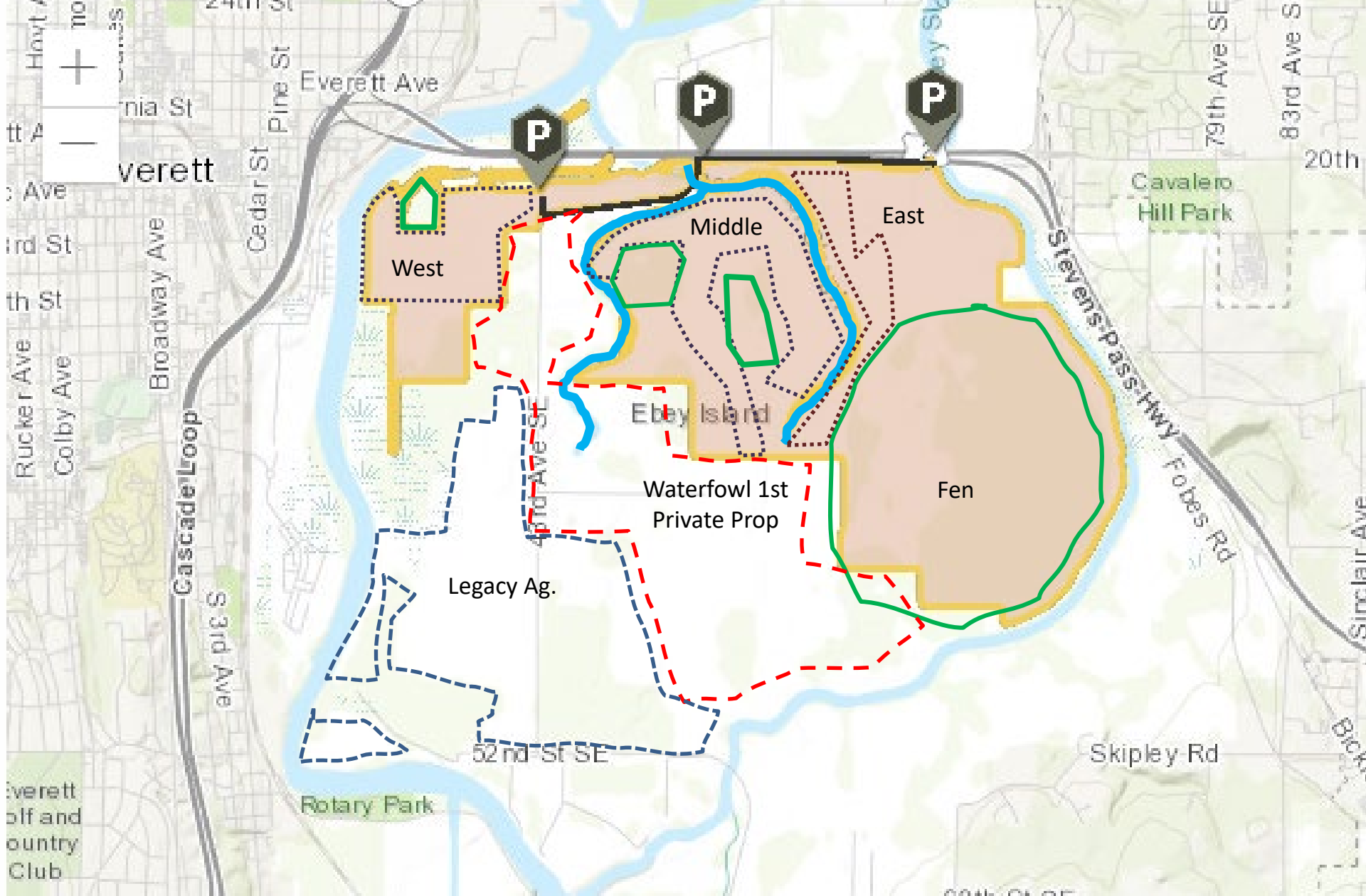
Input from you!

Input from others externally

Input from others internally

Overall vision for next 10 years





Questions We Asked

1. What conditions do WDFW land managers need to optimize?
 - Fish and wildlife habitat
 - Safety
 - Agriculture
 - Recreation
 - Wetland diversity
 - Water quality
2. Does the condition of drainage on WDFW property negatively impact neighbors?
 - No
3. Are wetlands and farmland enhancement projects feasible?
 - Yes
4. Does the diking district have suggestions?
 - Yes
5. Does the current lease farmer have suggestions?
 - Yes
- 6. Do the public and partners have suggestions?**



Urban Wildlife Area

Utilities & highways

Dumping and illegal
activity

Pedestrian and bike
access to Everett

US 2
Everett Waterlines
Gas pipeline



Illegal Dumping

End of Pedestrian Trail



Managed Landscape

Pumps

Tide Gates

Dikes



Drainage

Everything drains via the tide gate and pumps

- They are not in great condition
- WDFW does not control tide gates or pumps

It appears WDFW doesn't negatively impact the drainage network

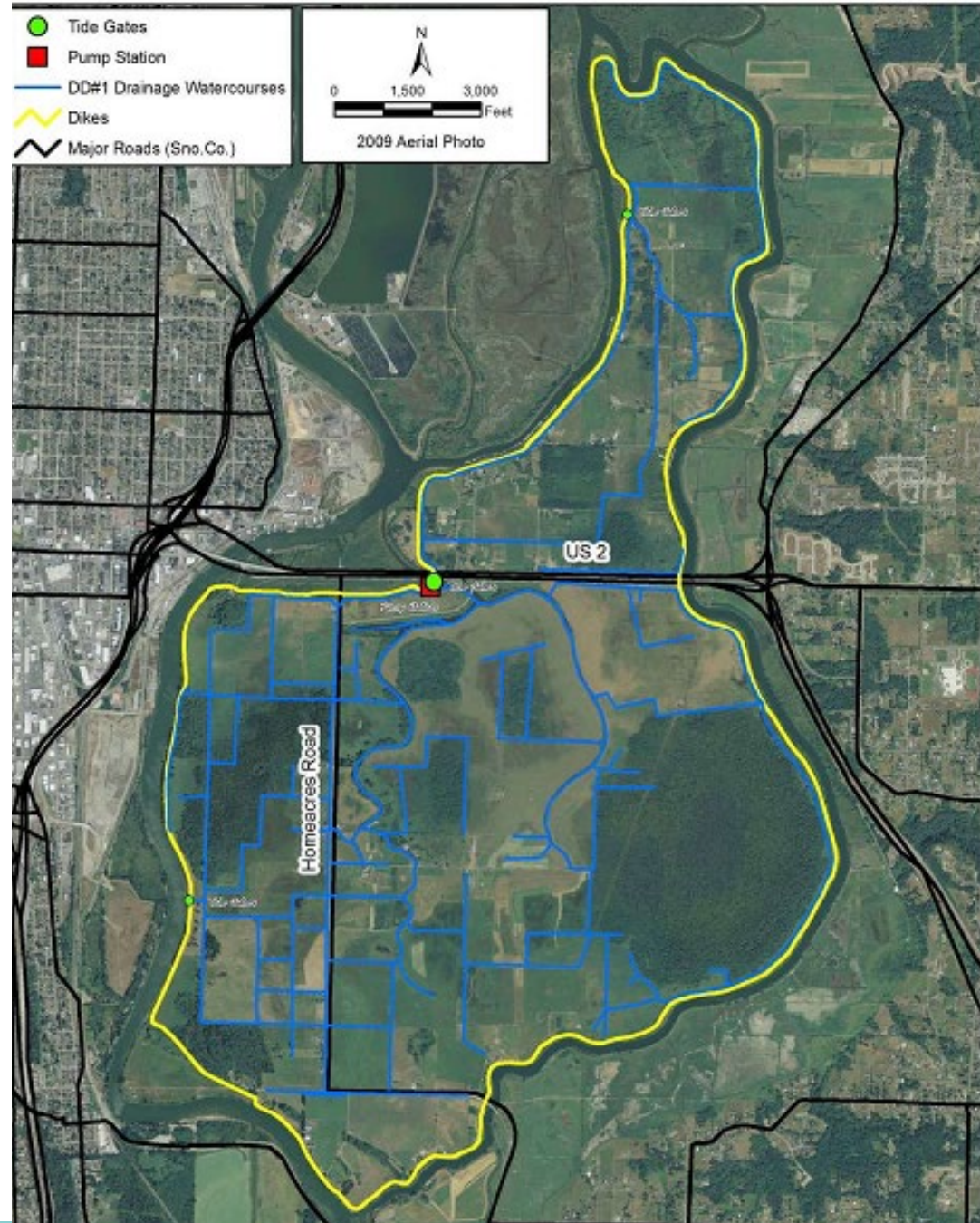
Minor drainage conveyance improvements can be made

Diking District relations are important

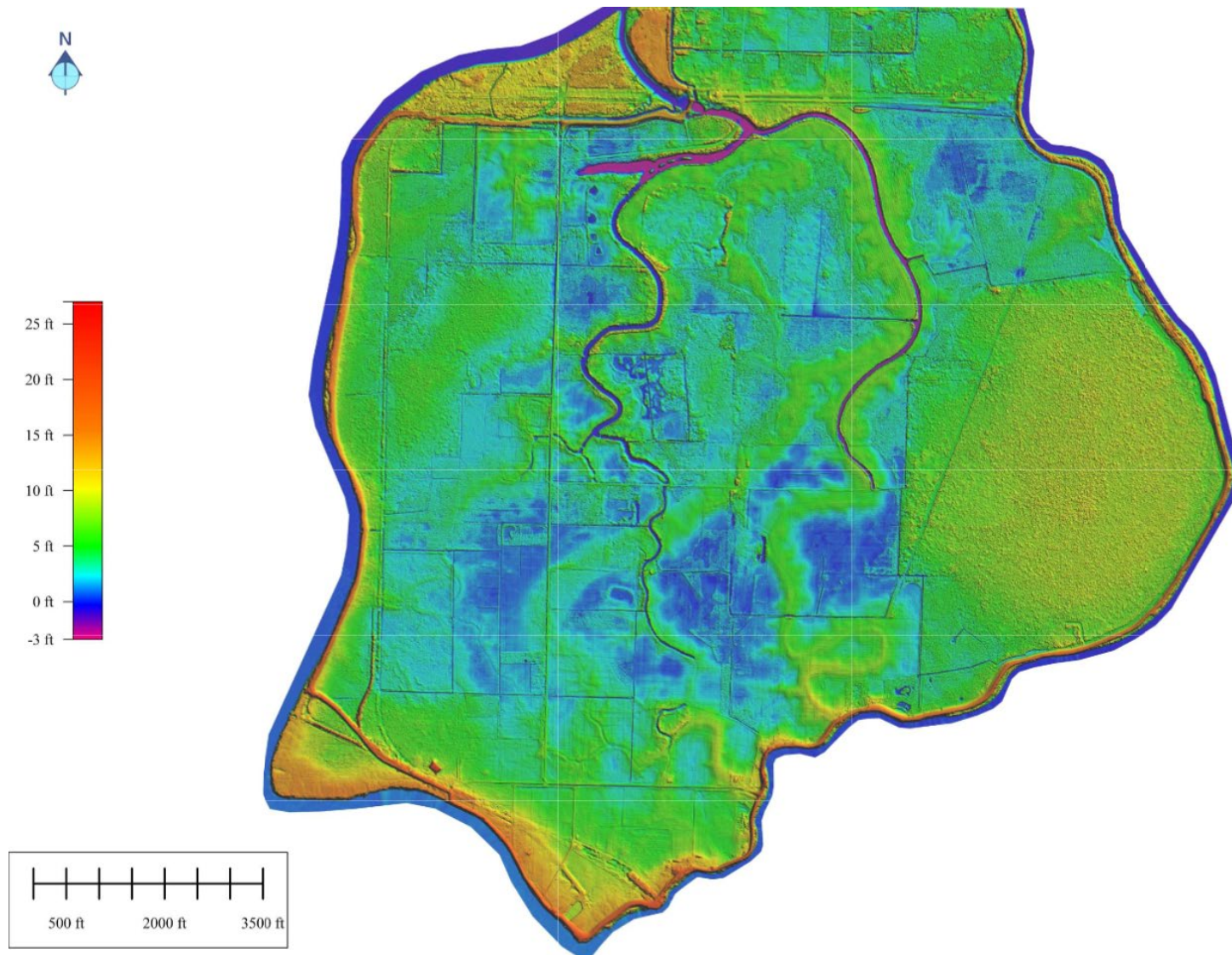
Beaver and beaver management

Fen is fairly resilient

- Enhancement of the Fen is possible
- Recommend that every potential project should consult with the Fen team



Topography



Boils



Sand boil formed during the Charleston Earthquake of 1886. Editorial credit: Everett Historical / Shutterstock.com



Access

West lot is next to the exit of the pedestrian trail from Everett

East lot is closed

Middle or Main lot set for improvements and nonmotorized boat launch to Deadwater Slough

Pullouts on Home Acres Road provide boat access to Deadwater Slough

Dikes not available for trails or public access



Emergent Wetlands

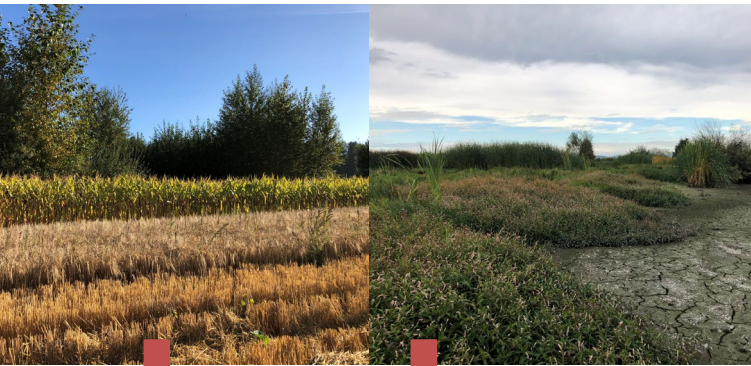
Reed Canary Grass dominated
Some native emergent pockets

Manage to reset plant succession

- Farming
- Mowing
- Grazing
- Periodic disturbance

Manage to both drain and hold water

- Manage pumping
- Water control devices
- Conveyance



large dabbling ducks

small dabbling ducks





Wildlife Sink





The Snohomish is
important to
migratory waterfowl



Upcoming Opportunities for Engagement

Winter 2023 and Ongoing - Snoqualmie Wildlife Area Advisory Committee Input

Spring 2023 - Draft 10-year plan is anticipated to be available and there will be an opportunity to comment

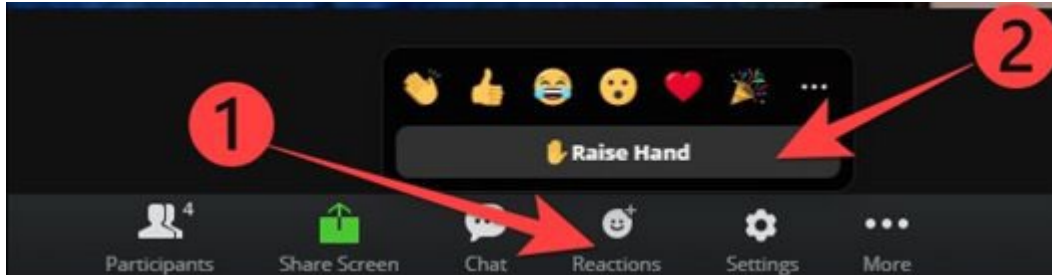
Ongoing - WDFW staff are available to answer questions and receive comments via phone or email

Ongoing - WDFW is committed to coordinating with the Tulalip Tribes as co-managers



Zoom Functions

“Raise Hand” feature



Call-in users:

- **dial *9** to raise and lower your hand

- **Dial *6** to mute or unmute yourself

Using the chat box



***This meeting will be recorded**



Loren Brokaw
Assistant Wildlife Program Manager
Loren.Brokaw@dfw.wa.gov

Lindsey Desmul
Habitat Biologist
Lindsey.Desmul@dfw.wa.gov



Thank you!

www.wdfw.wa.gov/ebey-island-plan

Brian Boehm
Snoqualmie Wildlife Area Manager
Brian.Boehm@dfw.wa.gov

CK Eidem
Regional Biologist
ceidem@ducks.org