

Town Hall #2: Coastal Steelhead

Region 6 Fish Management Team



Zoom Directions and Etiquette

- All callers will be muted upon entry.
- You can type a question through the Q&A function or ask a question by “raising your hand.” If you’re calling in you can raise a hand by dialing *9 on your phone, or if you're calling from a computer, you can find the hand icon at the bottom of your screen.
- When you are called on for a question or comment, we encourage you to speak up and provide comments live. To speak you will need to unmute yourself by using the mute button on your computer or mobile device or enter *6 if you’re calling from a land line.
- Please limit questions to one at a time.
- If you have a technical issue during the webinar, please drop us a note in the chat and we will help you through it.
- Be respectful of others
 - Be tough on issues and questions, not on people or organizations
 - No personal attacks, insults or threats
 - Listen and assume positive intentions from those speaking.
 - Speak and act professionally – no offensive, disrespectful, or derogatory language, including profanity
- Assume Positive Intentions
- Share questions or comments in written format online at wdfw.wa.gov/coastal-steelhead
- Please limit questions to one at a time.

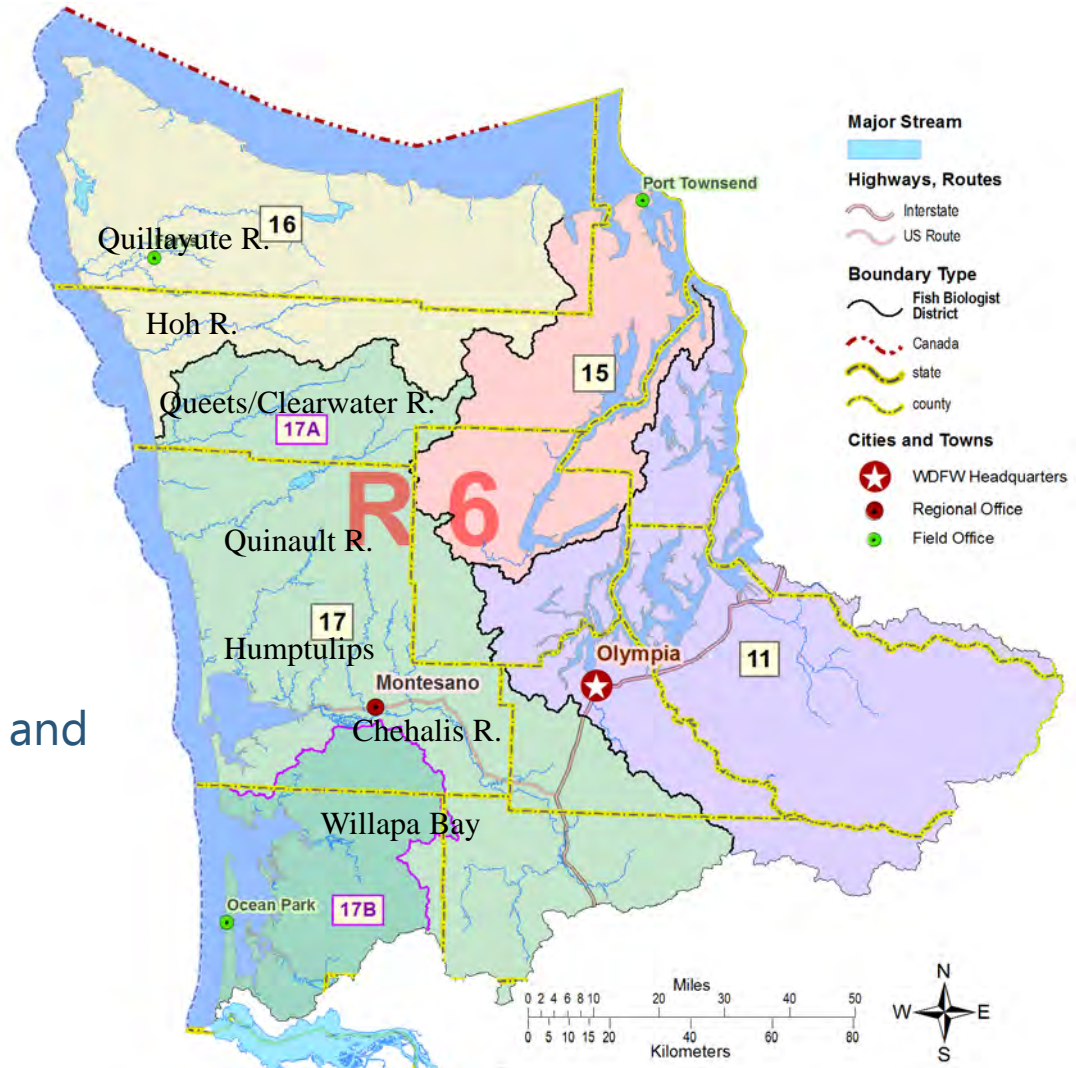


Agenda

Background and updates

2021/22 review

2022-23 management framework and regulatory options



Agenda

Background and updates

2021/22 review

2022-23 management framework and regulatory options



2022/23 Pre-season schedule

- Mid July: Survey data exchange with tribal comanagers
- Mid August: Spawning escapement estimates finalized
- Early September: Exchange pre-season forecasts with Tribal Co-Managers
- Early October: Pre-season Forecasts Agreement with Tribal Co-Managers
- **October 20th Town Hall #1:** Final escapements and preliminary forecasts
- Mid October: Co-manager policy meetings to develop Management Plans
- **November Town 10th Hall #2: Final pre-season planning**
- Mid November: Finalize Management Plans with tribal co-managers
- **Late November 28th Town Hall #3:** Communicate Director's decision on agreed to fishing plans
- December 1: Announce winter fishing rules



Agenda

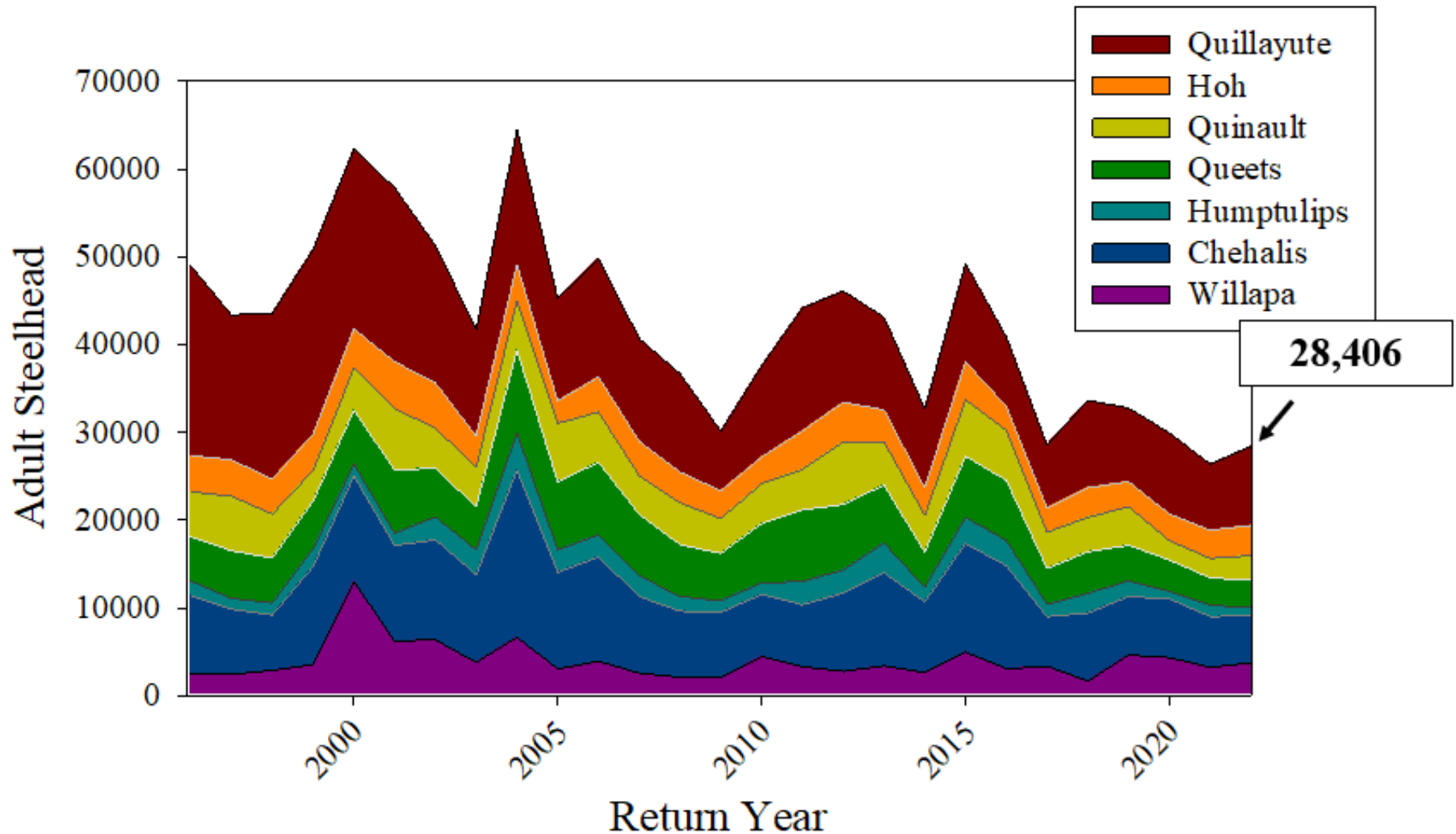
Background and Updates

2021/22 review

2022-23 management framework and regulatory options



2021/22 Review: Abundance



2021/22 Review: Preliminary Runsize

River/Area	Predicted Runsize	Actual Runsize	Escapement Goal	Escapement
Willapa	3,188	3,753	4,206	3,456
Chehalis	5,681	5,378	8,600	5,350
Humptulips	1,343	928	1,600	928
Upper Quinault	1,128	1,776	1,600	1,498
Queets/Clearwater	3,203	3,114	4,200	2,959
Hoh	3,141	3,443	2,400	3,100
Quillayute	8,516	8,996	5,900	8,186



Forecasted within 5% of actual runsize in 2021/22 and escapement goals not met in 5 of 7 rivers.



Agenda

Background and updates

2020/21 review

2022-23 management framework
regulatory options



2022/23 Wild Steelhead Forecasts

System	Run-to-River Forecast	Escapement Goal	Wild Steelhead Relative to Goal	Sport Impact Limit
Willapa	3,535	4,206	-671	353
Chehalis	7,114	8,600	-1486	198
Humptulips	1,222	1,600	-378	61
Upper Quinault	2,376	1,600	776	388
Queets/Clearwater	3,958	4,200	-242	198
Hoh	2,995	2,400	595	298
Quillayute	9,344	5,900	3444	1,722



Hatchery Steelhead Forecasts

Run Type	Facility	2022/23 Forecast
Early Winter	Naselle	497
	Humptulips/Wishkah	1,848
	Forks Creek/Willapa	1,180
	Hoh River	1,543
	Bogachiel	5,888
Late Winter	Bingham	529
	Skookumch. & outplants	2,011
	Eight Creek and Carlisle	1,159
	Lk. Aberdeen	1,792
	Quinault R. (Quin. Tribe)	5,253
	Queets R.	3,958
	Bogachiel	0



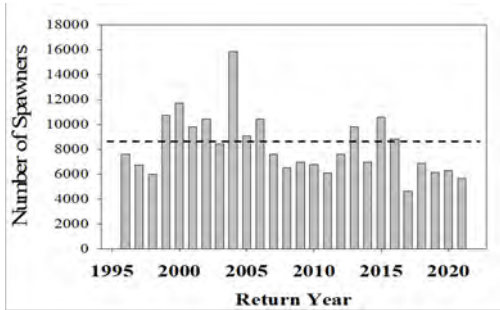
Sport Fishery Modeling- Considerations/Constraints

- Limited in-season tools
- Effort shift uncertainty
- Forecasting uncertainty
- Tribal comanagement
- No estimates of mortality associated with poaching
- No unbiased estimate of total sport impact



Statewide Steelhead Management Plan

Abundance



Productivity

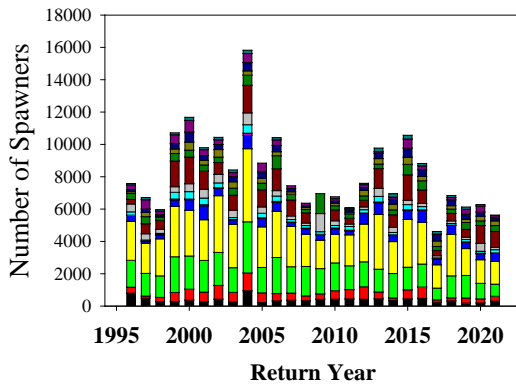


Washington Department of Fish and Wildlife

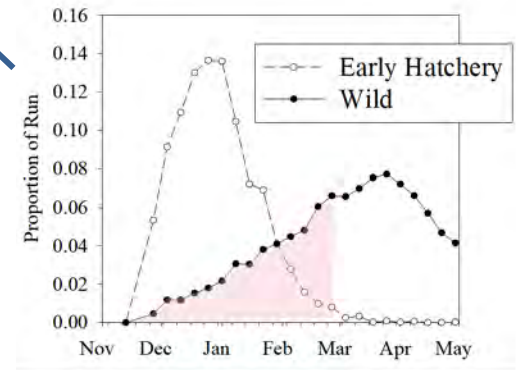
*Statewide Steelhead Management Plan:
Statewide Policies, Strategies, and Actions*

February 29, 2008

Diversity



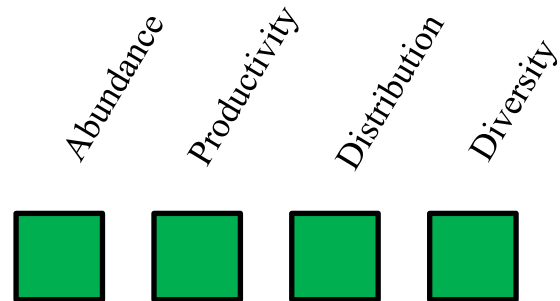
Distribution



2022/23 Fishery Proposals

1. Coastwide closure
2. Status Quo
3. Last year's regulations (no boat, no bait, no April)
4. Status quo with reduced days a week
5. Status quo in select waters
6. Status quo reduced hours
7. Last year's regulations reduced days
8. Hatchery and salmon directed fisheries in specific watersheds

*Lake planting of surplus hatchery steelhead



Analysis of Options

System	Sport Impact Limit	Full Closure	Status Quo	No Boat, No bait, No April	Fish from boat reduced days	Fish from boat in select waters	No Bait, No April, Reduced hours	Reduced days
Willapa	353	Closed	Closed	Open	Open	Closed	Closed	Open
Chehalis	198	Closed	Closed	Closed	Closed	Closed	Closed	Closed
Humptulips	61	Closed	Closed	Closed	Closed	Closed	Closed	Open
Upper Quinault	388	Closed	Concern for shifts in effort	Open	Open	Open	Open	Open
Queets/Clearwater	198	Closed	Closed	Closed	Closed	Closed	Closed	Open
Hoh	298	Closed	Closed	Concern for shifts in effort	Open	Open	Open	Open
Quillayute	1722	Closed	Concern for shifts in effort, Not accounting for tributary specific goals (diversity/distribution)	Open	Open	Open	Open	Open

↗ Concern for shifts in effort

⌘ Not accounting for tributary specific goals (diversity/distribution)

* Final regulations require comanager agreement

** Does not account for illegal catch

*** Does not account for overforecasting

Open to Fishing
Closed to Fishing



Analysis of Options

System	Sport Impact Limit	Full Closure	Status Quo	No Boat, No bait, No April	Fish from boat reduced days	Fish from boat in select waters	No Bait, No April, Reduced hours	Reduced days
Willapa	353	Red	Red	Green	Green	Red	Red	Green
Chehalis	198	Red	Red	Red	Red	Red	Red	Red
Humptulips	61	Red	Red	Red	Red	Red	Red	Green
Upper Quinault	388	Red	Red with ↗	Green	Green	Green	Green	Green
Queets/Clearwater	198	Red	Red	Red	Red	Red	Red	Green
Hoh	298	Red	Red	Red with ↗	Green	Green	Green	Green
Quillayute	1722	Red	Red with ↗ and Ⓞ	Green	Green	Green	Green	Green

↗ Concern for shifts in effort

Ⓞ Not accounting for tributary specific goals (diversity/distribution)

* Final regulations require comanager agreement

** Does not account for illegal catch

*** Does not account for overforecasting

Open to Fishing
Closed to Fishing



Analysis of Options

System	Sport Impact Limit	Full Closure	Status Quo	No Bait, No April	Fish from boat reduced days	Fish from boat in select waters	No Bait, No April, Reduced hours	Reduced days
Willapa	353	Closed	Closed	Open	Open	Closed	Closed	Open
Chehalis	198	Closed	Closed	Closed	Closed	Closed	Closed	Closed
Humptulips	61	Closed	Closed	Closed	Closed	Closed	Closed	Open
Upper Quinault	388	Closed	Concern for shifts in effort	Open	Open	Open	Open	Open
Queets/Clearwater	198	Closed	Closed	Closed	Closed	Closed	Closed	Open
Hoh	298	Closed	Closed	Concern for shifts in effort	Open	Open	Open	Open
Quillayute	1722	Closed	Concern for shifts in effort, Not accounting for tributary specific goals (diversity/distribution)	Open	Open	Open	Open	Open

↗ Concern for shifts in effort

⌘ Not accounting for tributary specific goals (diversity/distribution)

* Final regulations require comanager agreement

** Does not account for illegal catch

*** Does not account for overforecasting

Open to Fishing
Closed to Fishing



Analysis of Options

System	Sport Impact Limit	Full Closure	Status Quo	No Boat, No bait, No April	Fish from boat reduced days	Fish from boat in select waters	No Bait, No April, Reduced hours	Reduced days
Willapa	353	Closed	Closed	Open	Open	Closed	Closed	Open
Chehalis	198	Closed	Closed	Closed	Closed	Closed	Closed	Closed
Humptulips	61	Closed	Closed	Closed	Closed	Closed	Closed	Open
Upper Quinault	388	Closed	Concern for shifts in effort	Open	Open	Open	Open	Open
Queets/Clearwater	198	Closed	Closed	Closed	Closed	Closed	Closed	Open
Hoh	298	Closed	Closed	Concern for shifts in effort	Open	Open	Open	Open
Quillayute	1722	Closed	Concern for shifts in effort, Not accounting for tributary specific goals	Open	Open	Open	Open	Open

↗ Concern for shifts in effort

⌘ Not accounting for tributary specific goals (diversity/distribution)

* Final regulations require comanager agreement

** Does not account for illegal catch

*** Does not account for overforecasting

Open to Fishing
Closed to Fishing



Analysis of Options: Hatchery Directed Fisheries

Goal: Design fisheries that meet management objectives and provide opportunity to harvest hatchery origin steelhead where conservation concern is greatest.

Strategy: Focus available creel around highest priority fisheries and monitor impacts with high precision and accuracy in-season.

Special considerations:

- Tribal co-management
- Limited monitoring resources
- Increased potential for early-closures



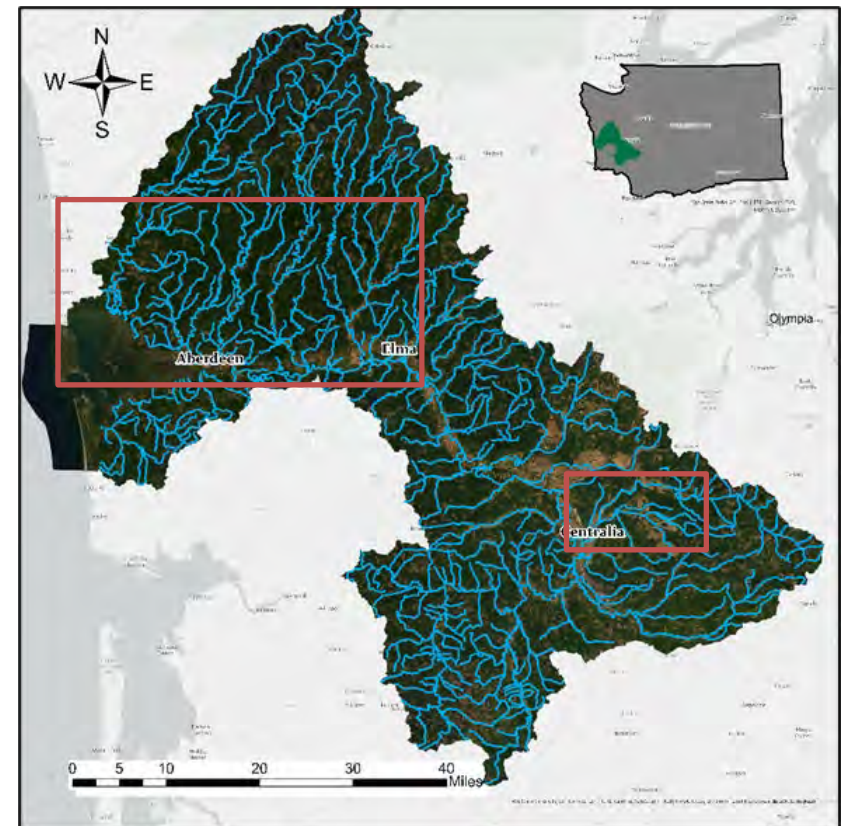
Analysis of Options: Hatchery Directed Fisheries

Forecasted Sport Impact Limit

Tributary	Forecasted Sport Impact Limit
Hoquiam	9
Wishkah	11
Wynoochee	39
Satsop	58
Cloquallum	11
Black R.	1
L. Chehalis & Tribs.	6
U. Chehalis Mains.	10
Skookumchuck	9
Newaukum	21
U. Chehalis & Tribs.	6
EF Chehalis	7
SF Chehalis	7
WF Chehalis	3

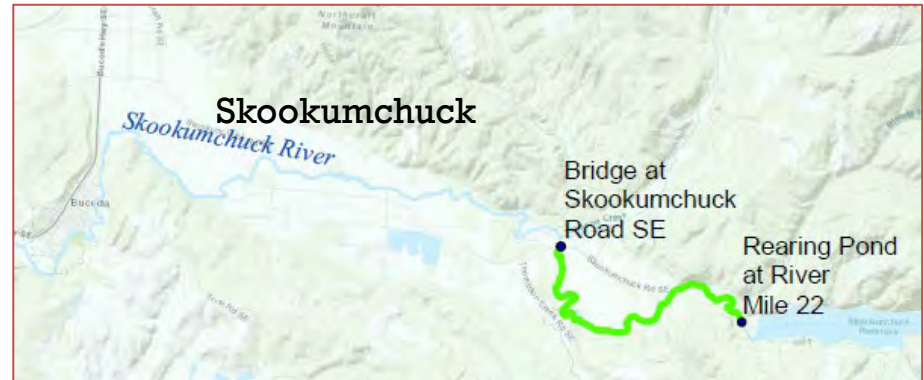
*Does not account for mixed “stock” encounters

Chehalis Watershed



Analysis of Options: Hatchery Directed Fisheries

Tributary	Forecasted Sport Impact Limit
Hoquiam	9
Wishkah	11
Wynoochee	39
Satsop	58
Cloquallum	11
Black R.	1
L. Chehalis & Tribs.	6
U. Chehalis Mains.	10
Skookumchuck	9
Newaukum	21
U. Chehalis & Tribs.	6
EF Chehalis	7
SF Chehalis	7
WF Chehalis	3



*Does not account for mixed “stock” encounters



Questions? Feedback?

We're especially interested in

- Feedback on proposal presented
- New proposals for steelhead fisheries

ZOOM Reminders:

- You can type a question through the Q&A function or ask a question by "raising your hand." If you're calling in you can raise a hand by dialing *9 on your phone, or if your calling from a computer you can find the hand icon at the bottom of your screen.
- To speak you will need to unmute yourself by using the mute button on your computer or mobile device, or enter *6 if you're calling from a land line.
- If you have a technical issue during the webinar, please drop us a note in the Q&A and we will help you through it.
- Questions in written format are accepted an online portal a: wdfw.wa.gov/coastal-steelhead

